

B.M. BY 7556 ELEV. 928.446
 RDBM TAG CTR CB NR BCR LEFT TURN
 POCKET TO GOLF COURSE 6 FT N + 80 FT W.
 C/L INT AGOURA RD. + LINDERO CANYON RD.
 MALIBU QUAD. 19.65

REVISION
 PAGE 5 (A) DELETES 10' L.F. OF V.C.P. FROM STA. 0+00 TO STA. 0+10 WAS CORRECTED BY P.C. 8121 PER A.
 (B) CHANGES EX. M.H. STAT. TO LOCATION SHOWN ON P.C. 8121
 APPROVED *[Signature]*
 OFFICE OF COUNTY ENGINEER P.C.E. No. 11086

REVISION
 PAGE 2 & 3 MOVE MAIN LINE LOCATION 2 FEET SOUTH
 STA. 0+90 TO STA. 20+58
 APPROVED *[Signature]*
 OFFICE OF COUNTY ENGINEER

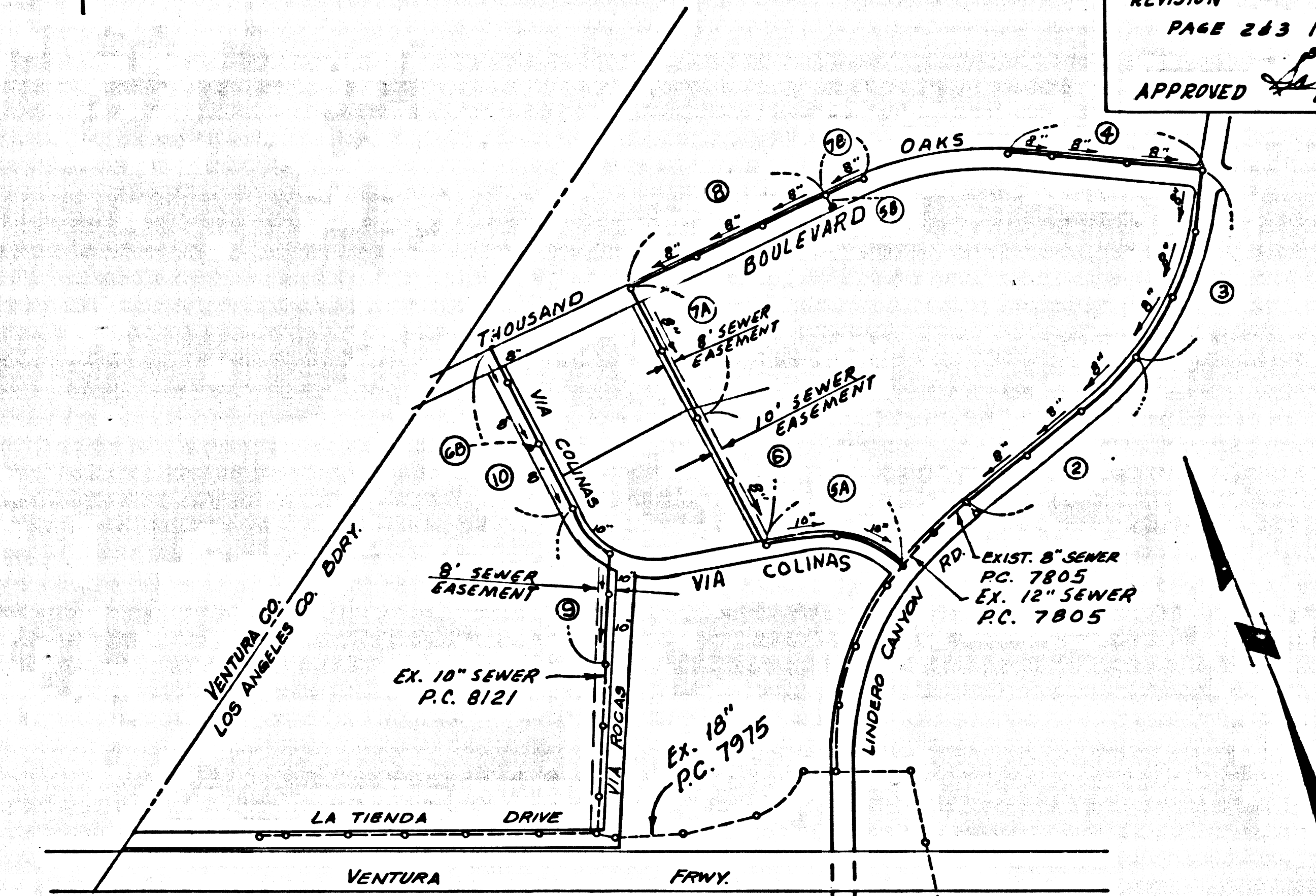
DOUBLE SCALE
 CALABASAS BLDG. DIST. NO. 91

PROFILE, ALIGNMENT AND GRADE OF
 SANITARY SEWERS P.C. 8270
 TO BE CONSTRUCTED IN PAGE 1

TRACT NO. 30767 & 30392
 PRIVATE CONTRACT NO. 8270

W.S. 93
 SHEETS: 10 PAGES
 SCALE: HORIZ. 1" = 40' VERT. 1" = 4'
 APRIL, 1969
 PREPARED IN THE OFFICES OF
 McINTIRE & QUIROS INC.
 32123 W. LINDERO CANYON ROAD
 WESTLAKE VILLAGE, CALIF.
 REG. C. E. NO. 13810

41441



NOTE: NUMBERS IN CIRCLES INDICATE PAGE NUMBERS.
 P.C. 8270
 INDEX MAP
 SCALE: 1" = 600'

COLLECT CHARGES AS INDICATED

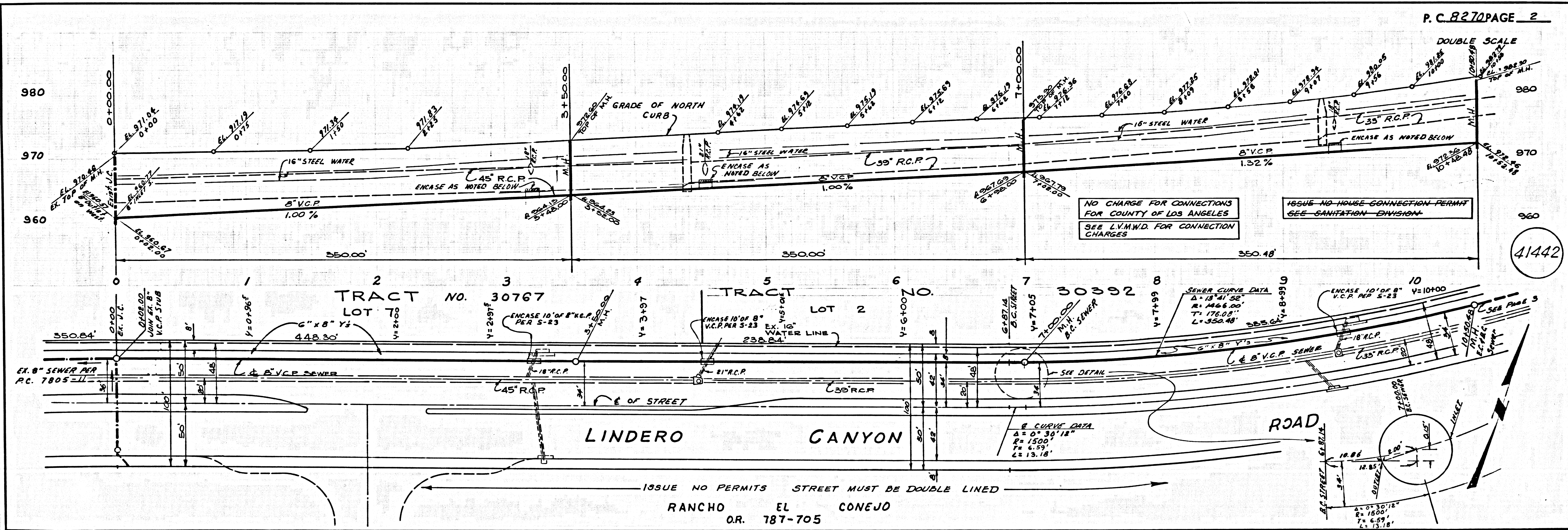
DO NOT ISSUE HOUSE CONNECTION PERMITS UNTIL OUTLET IS AVAILABLE

- NOTES:
- HOUSE LATERALS TO BE CONSTRUCTED WITH INVERTS AT PROPERTY LINE 4 FEET BELOW CURB GRADE EXCEPT AS NOTED.
 - PROVIDE STAKES ON THE PROPERTY LINE OR PROPERTY LINES PRODUCED AT RIGHT ANGLES TO THE SEWER LINE AT THE CENTER LINE OF EACH MANHOLE.
 - NO REPRESENTATIVE OF THE COUNTY ENGINEER WILL SURVEY OR LAY OUT ANY PORTION OF THE WORK.
 - THE PRIVATE ENGINEER SHALL FURNISH THE COUNTY ENGINEER WITH GRADE SHEETS AND STATIONING FOR ALL HOUSE LATERALS AND "T" OR "T" BRANCHES AND SHALL PROVIDE STAKES FOR THEM AT THEIR PROPER LOCATIONS WITH STATIONING PLAINLY MARKED. ALL HOUSE LATERALS SHALL BE CONSTRUCTED IN A STRAIGHT ALIGNMENT AT RIGHT ANGLES FROM THE MAIN LINE SEWER EXCEPT AS SHOWN ON THE PLANS. HOUSE LATERALS FROM CHIMNEYS SHALL NOT HAVE AN ANGLE OF LESS THAN 45° WITH THE MAIN LINE SEWER. ANY CHANGE IN ALIGNMENT SHALL BE REQUESTED IN WRITING BY THE PRIVATE ENGINEER.
 - THE PRIVATE ENGINEER SHALL FURNISH THE HOUSE LATERAL DEPTH AT THE PROPERTY LINE BELOW THE TOP OF CURB ELEVATION FOR EACH HOUSE LATERAL ON THE GRADE SHEET.
 - NO REVISIONS SHALL BE MADE IN THESE PLANS WITHOUT THE APPROVAL OF THE COUNTY ENGINEER.
 - THE CONTRACTOR SHALL NOTIFY THE CONSTRUCTION DIVISION BY TELEPHONE, RADIOSON 9-4747, EXT. 81381, AT LEAST TWENTY-FOUR HOURS BEFORE STARTING ANY WORK UNDER THIS CONTRACT.
 - ALL STRUCTURES SHALL BE EITHER BRICK MANHOLES PER S-3 OR PRECAST CONCRETE MANHOLES PER S-5 OR S-4, EXCEPT AS NOTED.
 - "T" OR "T" BRANCHES MAY BE USED FOR CONNECTIONS TO MAINLINE SEWERS EXCEPT AS NOTED.
 - MANHOLE TOPS IN UNIMPROVED PORTS OF WAY TO BE 24 INCHES ABOVE FINISHED GRADE.
 - USE EXTRA STRENGTH PIPE. ALL PIPE IS STANDARD UNLESS NOTED OTHERWISE.
 - VERTIFIED CLAY PIPE JOINTS SHALL BE TYPE "B", "C", OR "D" PER STANDARD SPECIFICATIONS SECTION 208-2.
 - IF A POWER POLE IS WITHIN THREE FEET OF THE SEWER, THE SEWER SHALL BE ENCASED, PER S-23, TWO FEET ON EACH SIDE FROM THE POINT OF INTERFERENCE.
 - IF DURING THE COURSE OF CONSTRUCTION IT IS DETERMINED THAT THERE IS LESS THAN FOUR FEET OF COVER OVER THE TOP OF A MAIN LINE OR HOUSE LATERAL V.C.P. SEWER WHICH IS NOT INDICATED ON THE PLANS, THE PIPE SHALL BE ENCASED PER S-23, UNLESS OTHERWISE APPROVED BY THE COUNTY ENGINEER.
 - RESURFACE ALL TRENCHES WITHIN PAVED AREAS TO MEET L.A. COUNTY ROAD DEPT. OR CALIFORNIA STATE HIGHWAY REQUIREMENTS IN ACCORDANCE WITH PERMITS.
 - SEWERS TO BE TESTED FOR LEAKAGE BY AIR TEST METHOD PER SEC. 208-2.3.7.C. OF THE STANDARD SPECIFICATIONS.
 - REFER TO SECTION 210-1.1 OF THE STANDARD SPECIFICATIONS, REGARDING SAFETY ORDERS.
 - ALL JOINTS BETWEEN CAST IRON PIPE AND VERTIFIED CLAY PIPE SHALL BE MADE WITH A RUBBER SLEEVE JOINT, TYPE "C" OR "B", WITH BUSHING IF NECESSARY PER STANDARD SPECIFICATIONS, SECTION 208-2.
- THE FOLLOWING LATEST REVISED STANDARD PLANS ON FILE IN THE OFFICE OF THE COUNTY ENGINEER SHALL APPLY IN THE CONSTRUCTION OF THIS PROJECT:

LEGEND	S-1
MINIMUM BRICK SANITARY REQUIREMENTS	S-2
BRICK MANHOLE	S-3
NON-REINFORCED PRECAST CONCRETE MANHOLE	S-4
REINFORCED PRECAST CONCRETE MANHOLE	S-5
MANHOLE FRAME AND COVER	S-6
STANDARD MANHOLE STEP	S-7
BEDDING FOR SEWER PIPE	S-8
CRADLING AND ENCASEMENT	S-23
W/O OR TEE SUPPORT	S-24
ALLOWABLE TRENCH WIDTHS	S-25

NOTE: GRADES TO WHICH THIS IMPROVEMENT IS TO BE CONSTRUCTED ARE SHOWN ON PLANS AND PROFILES. GRADE POINTS FOR TOP OF CURB, CENTER LINE OF STREETS, OR CENTER LINE OF ALLEYS ARE SHOWN BY CHIEFS ON PROFILES. AT ALL POINTS BETWEEN DESIGNATED POINTS THE GRADE SHALL BE ESTABLISHED SO AS TO CONFORM TO A STRAIGHT LINE DRAWN BETWEEN SAID DESIGNATED POINTS. ELEVATIONS ARE IN FEET ABOVE U.S.C. & G.S. MEAN LEVEL DATUM OF 1929. WORK SHALL BE CONSTRUCTED ACCORDING TO THE STANDARD SPECIFICATIONS FOR PUBLIC WORKS CONSTRUCTION AND SPECIAL PROVISIONS FOR THE CONSTRUCTION OF SANITARY SEWERS DATED JAN. 2, 1969, AS REVISED, AND SHALL BE PROSECUTED ONLY IN THE PRESENCE OF THE COUNTY ENGINEER. BEFORE WORK CAN BE STARTED, THE CONTRACTOR MUST OBTAIN A PERMIT TO EXCAVATE IN COUNTY STREETS FROM THE L.A. COUNTY ROAD DEPT., DISTRICT OFFICE NO. 3, AND PAY A FEE TO THE COUNTY ENGINEER, ROOM 323, COUNTY ENGINEERING BUILDING, 100 WEST SECOND STREET, LOS ANGELES, CALIF. REGIONAL OFFICE, SUPERVISOR TO COVER THE COST OF CONSTRUCTION INSPECTION AND RECORD PLANS. APPROVAL OF THIS PLAN BY THE COUNTY OF LOS ANGELES DOES NOT CONSTITUTE A REPRESENTATION AS TO THE ACCURACY OF THE LOCATION OR OF THE EXISTENCE OR NON-EXISTENCE OF ANY UNDERGROUND UTILITY PIPE, OR STRUCTURE WITHIN THE LIMITS OF THE PROJECT. THIS NOTE APPLIES TO ALL PAGES. IF WORK IS TO BE DONE IN A STATE HIGHWAY, A PERMIT MUST BE OBTAINED FROM THE STATE OF CALIFORNIA, DIVISION OF HIGHWAY, 120 SOUTH SPRING STREET, LOS ANGELES, CALIFORNIA.

COUNTY OF LOS ANGELES, CALIFORNIA
 JOHN A. LAMBIE, COUNTY ENGINEER
 APPROVED BY *[Signature]* DATE 6-10-69
 APPROVED BY *[Signature]* DATE 6-10-69
 CHECKED BY *[Signature]* DATE 6-10-69
 REG. C.E. NO. 9406



NO CHARGE FOR CONNECTIONS FOR COUNTY OF LOS ANGELES SEE L.V.M.W.D. FOR CONNECTION CHARGES

ISSUE NO HOUSE CONNECTION PERMIT SEE SANITATION DIVISION

ISSUE NO PERMITS STREET MUST BE DOUBLE LINED
 RANCHO EL CONEJO
 O.R. 787-705

