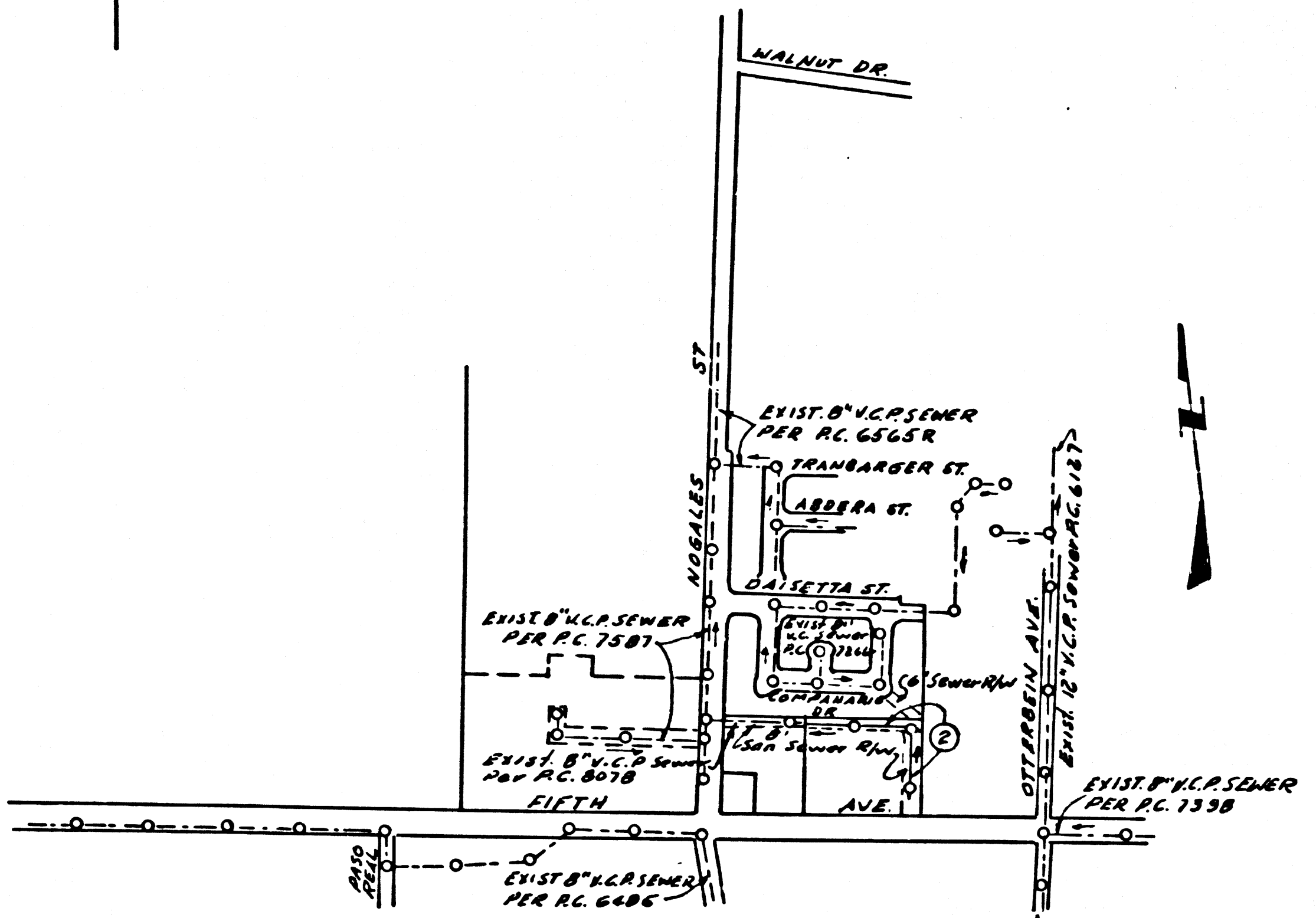


B.M. A.G. 2610 ELEV. 482.628
 BOLT 5/8" W. END CONC. CULV.
 HOWL. S. SIDE FIFTH AVE. @
 MI. POST 2.28
 OTTERBEIN QUAD. 1965

The following Latest Revised Standard Plans on file
 in the Office of the County Engineer shall
 Apply in the Construction of this Project.

Legend	5-1
Minimum Public Safety requirements	5-2
Brick Manhole	5-3
Non Reinforced precast conc. Manhole	5-5
Reinforced precast conc. Manhole	5-6
Manhole Frame and Cover	5-15
Standard Manhole Steps	5-17
Bedding for sewer pipes	5-21
Wye or Tee support	5-26
Allowable Trench Widths	5-33
Grading and encasement	5-23



P.C. 8278
 INDEX MAP
 SCALE 1" = 600'

No connections for the disposal of
 industrial wastes shall be made to
 sewers shown on these drawings
 without written permission from the
 Chief Engineer and General Manager
 of the County Sanitation Districts.

FINISHED SURFACE TO BE IN
 PLACE PRIOR TO ACCEPTANCE
 OF THIS SEWER

LA PUENTE BLDG. DIST. NO. 2

- NOTES:
1. PROVIDE STAKES ON THE PROPERTY LINES PRODUCED AT RIGHT ANGLES TO THE SEWER LINE AT THE CENTER LINE OF EACH MANHOLE.
 2. NO REPRESENTATIVE OF THE COUNTY ENGINEER WILL SURVEY OR LAY OUT ANY PORTION OF THE WORK.
 3. THE PRIVATE ENGINEER SHALL FURNISH THE COUNTY ENGINEER WITH GRADE SHEETS AND STATIONING FOR ALL HOUSE LATERALS AND TIE-BRANCHES AND SHALL PROVIDE STAKES FOR THEM AT THEIR PROPER LOCATIONS WITH STATIONING PLAINLY MARKED. ALL HOUSE LATERALS SHALL BE CONSTRUCTED IN A STRAIGHT ALIGNMENT AT RIGHT ANGLES FROM THE MAIN LINE SEWER EXCEPT AS SHOWN ON THE PLANS. HOUSE LATERALS FROM CHIMNEYS SHALL NOT HAVE AN ANGLE OF LESS THAN 45° WITH THE MAIN LINE SEWER. ANY CHANGE IN ALIGNMENT SHALL BE SHOWED BY NOTES BY THE PRIVATE ENGINEER.
 4. THE PRIVATE ENGINEER SHALL FURNISH THE HOUSE LATERAL DEPTH AT THE PROPERTY LINE BELOW THE TOP OF CURB ELEVATION FOR EACH HOUSE LATERAL ON THE GRADE SHEET.
 5. NO DIVERSIONS SHALL BE MADE IN THESE PLANS WITHOUT THE APPROVAL OF THE COUNTY ENGINEER.
 6. THE CONTRACTOR SHALL NOTIFY THE CONSTRUCTION DIVISION BY TELEPHONE, MADISON 9-8247, EXT. 81581, AT LEAST TWENTY-FOUR HOURS BEFORE STARTING ANY WORK UNDER THIS CONTRACT.
 7. All structures shall be Brick Manholes per S-3
 8. T & T branches may be used for connections to Main Line Sewers
 9. All manholes shall be constructed in accordance with the specifications.
 10. USE EXTRA STRENGTH PIPE. ALL PIPE IS STANDARD DEPTH EXCEPT AS NOTED.
 11. Unfinished Clay Pipe Joints shall be type "D" or "a" per S-3d specifications Sect. 200-2.
 12. IF A POWER POLE IS WITHIN THREE FEET OF THE SEWER, THE SEWER SHALL BE ENCASED, PER S-25, TWO FEET ON EACH SIDE FROM THE POINT OF INTERFERENCE.
 13. IF DURING THE COURSE OF CONSTRUCTION IT IS DETERMINED THAT THERE IS LESS THAN FOUR FEET OF COVER OVER THE TOP OF A MAIN LINE OR HOUSE LATERAL V.C.P. SEWER WHICH IS NOT INDICATED ON THE PLANS, THE PIPE SHALL BE ENCASED PER S-25, UNLESS OTHERWISE APPROVED BY THE COUNTY ENGINEER.
 14. HOUSE LATERALS TO BE CONSTRUCTED WITH INVERTS AT PROPERTY LINE 4 FEET BELOW CURB GRADE EXCEPT AS NOTED.
 15. REINFORCE ALL TRENCHES WITHIN PAVED AREAS TO MEET L.A. COUNTY ROAD DEPT. OR CALIFORNIA STATE HIGHWAY REQUIREMENTS IN ACCORDANCE WITH PERMITS.
 16. Sewers to be tested for leakage per Sections 206-2.3.7 of the S-3d specifications
 17. All joints between cast iron pipe and unfinished clay pipe shall be made with a rubber sleeve joint to per S-3d specifications (with bushings if necessary) per S-3d specifications Section 200-2

County Sanitation Districts shall be notified prior to the following so that required inspection can be made (Phone 837-1025 - 406-8089)

Acceptance of the project.

NOTICE TO CONTRACTOR
 The existence and location of any underground utility lines or structures shown on these plans are obtained by a search of the available records. To the best of my knowledge there are no existing utilities except as shown on these plans. The contractor is required to take all precautionary measures to protect the utility lines shown and any other lines not of record or not shown on these plans.

Robert J. Pells
 R.E.E. 12507

COLLECT CHARGES AS INDICATED

PROFILE, ALIGNMENT AND GRADE OF P.C. 8278
 SANITARY SEWERS PAGE 1

CONSTRUCTED IN
 R/W N/O FIFTH AVE.

PRIVATE CONTRACT NO. 8278

W.S. 3804
 1 SHEET 2 PAGES
 SCALE: VERT. 1" = 4' HORIZ. 1" = 40'
 APRIL, 1969
 PREPARED IN THE OFFICES OF

41172

Robert J. Pells
 R.E.E. NO. 12507

NOTE:
 GRADES TO WHICH THIS IMPROVEMENT IS TO BE CONSTRUCTED ARE SHOWN ON PLANS AND PROFILES. GRADE POINTS FOR TOP OF CURB, CENTER LINE OF STREET, OR CENTER LINE OF ALLEY ARE SHOWN BY CIRCLES ON PROFILES. AT ALL POINTS BETWEEN BRIDGEPOINTS THE GRADE SHALL BE ESTABLISHED SO AS TO CONFORM TO A STRAIGHT LINE BETWEEN SAID BRIDGEPOINTS. ELEVATIONS ARE IN FEET ABOVE MEAN SEA LEVEL DATUM OF 1929.

THIS DRAWING AND THE DATA HEREON ARE HEREBY MADE A PART OF THE SPECIFICATIONS. ON FILE IN THE OFFICE OF THE COUNTY ENGINEER AND SHALL BE PROSECUTED ONLY IN THE PRESENCE OF THE COUNTY ENGINEER.

BEFORE WORK CAN BE STARTED, THE CONTRACTOR MUST OBTAIN A PERMIT TO EXCAVATE IN COUNTY STREETS FROM THE L.A. COUNTY ROAD DEPT., DISTRICT OFFICE NO. 11, 111 N. GARDEN ST., LOS ANGELES, CALIF. AND PAY A FEE TO THE COUNTY ENGINEER, ROOM 300, COUNTY ENGINEERING BUILDING, 100 WEST SECOND STREET OF CITY OF LOS ANGELES. A PROFESSIONAL OFFICE, SUFFICIENT TO COVER THE COST OF CONSTRUCTION INSPECTION AND RECORD PLANS.

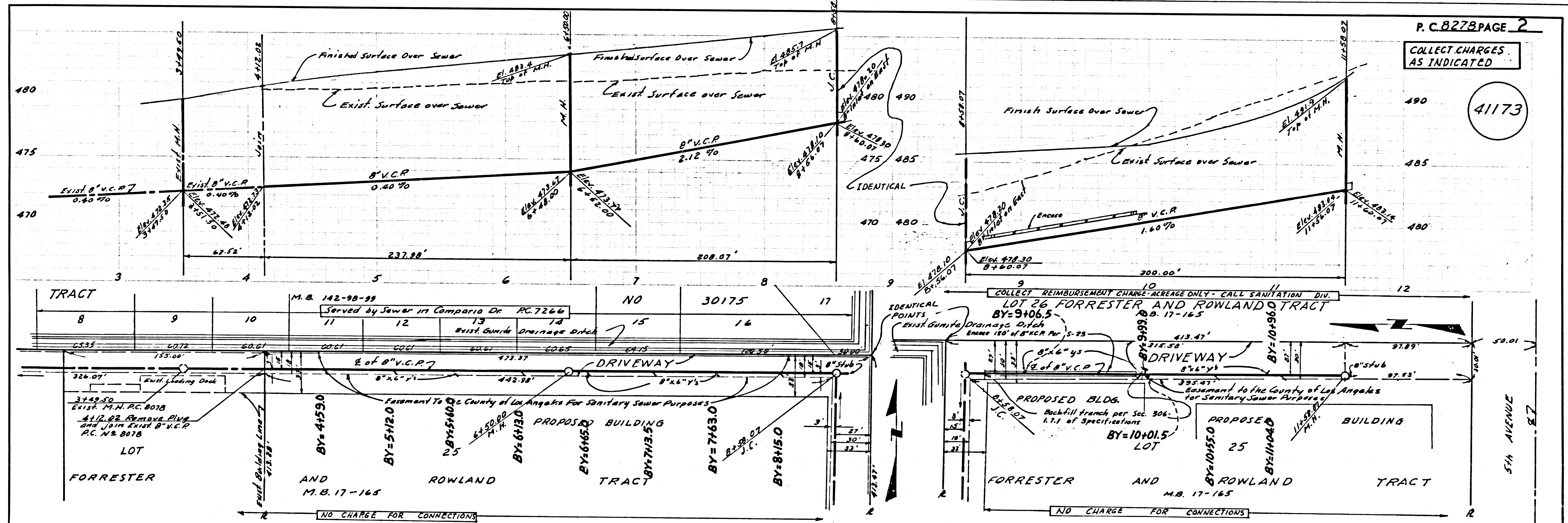
APPROVAL OF THIS PLAN BY THE COUNTY OF LOS ANGELES DOES NOT CONSTITUTE A REPRESENTATION AS TO THE ACCURACY OF THE LOCATION OF OR THE EXISTENCE OR NON-EXISTENCE OF ANY UNDERGROUND UTILITY PIPE, OR STRUCTURE WITHIN THE LIMITS OF THIS PROJECT. THIS NOTE APPLIES TO ALL PAGES.

IF WORK IS TO BE DONE IN A STATE HIGHWAY, A PERMIT MUST BE OBTAINED FROM THE STATE OF CALIFORNIA, DIVISION OF HIGHWAYS, 120 SOUTH SPRING STREET, LOS ANGELES, CALIFORNIA.

COUNTY OF LOS ANGELES, CALIFORNIA
 JOHN A. LAMBE, COUNTY ENGINEER
 J. D. PARKHURST, CHIEF ENGINEER
 CO. SAN. DIST. NO. 2
 APPROVED BY: *R. J. Pells* APPROVED BY: *J. D. Parkhurst*
 SAN DIMAS REGIONAL ENGINEER OFFICE ENGINEER

CHECKED BY: *Stanley Lee* 6/14/69
 R.E.E. NO. 12507

J. N. 026970



P.C. 8278 PAGE 2
 COLLECT CHARGES AS INDICATED

41173