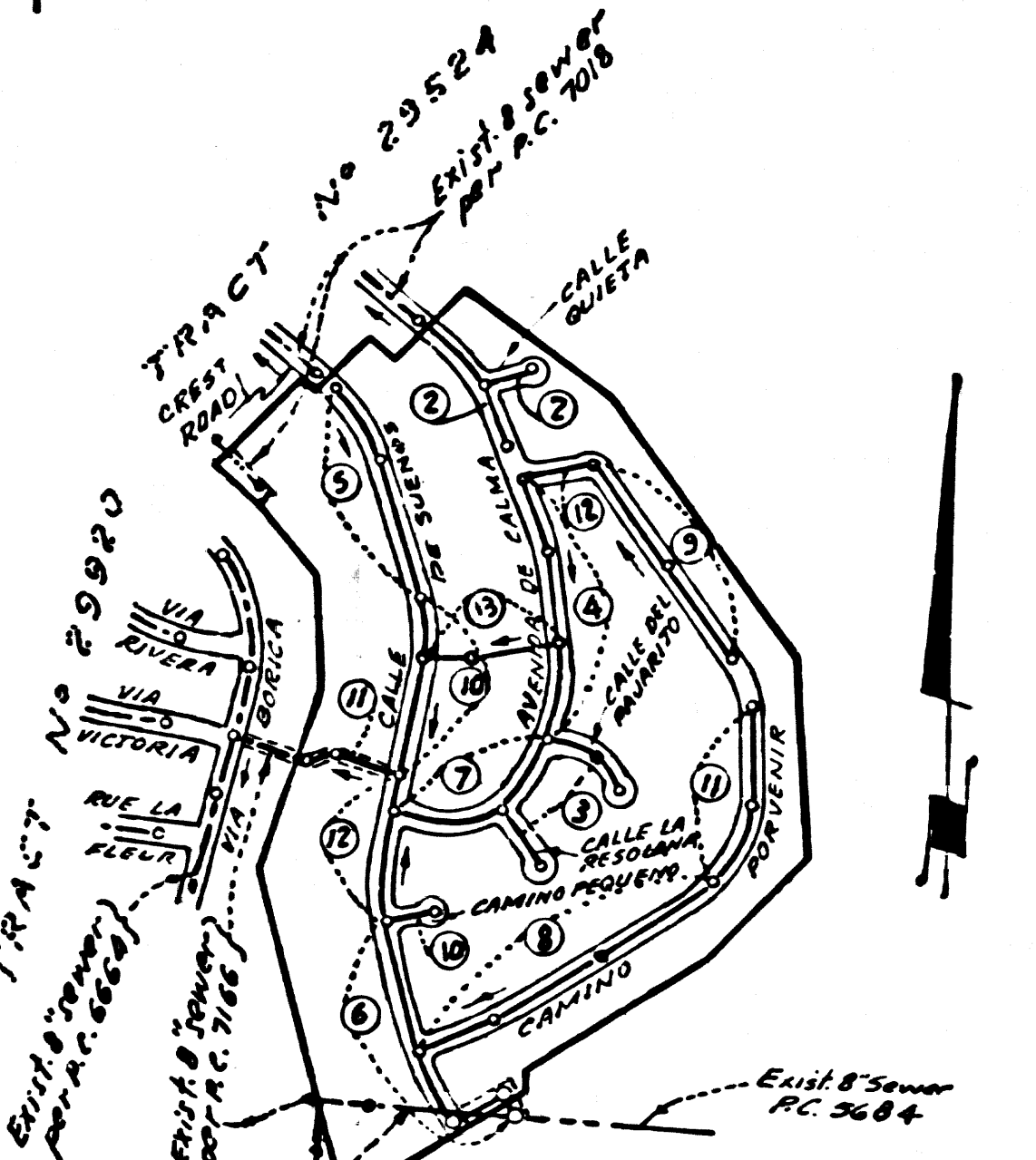


B.M. 5Y 6044 ELEV. 291.030'
 6' BRAD NAIL CURB 1" MIN. OF R.C.P.
 8" V.C.P. 40' IN DIAM. 1" IN 2' OF
 MANHOLE COVER
 BALDOS VERDES QUAD. 1965 Adjusted



Plan, Inlet, Manhole, Frame & Cover
 Manhole flow at
 All Times -
INDEX MAP
TRACT No 29115
 P. C. 8281
 Scale 1" = 600'

THE FOLLOWING COUNTY ENGINEER
 STANDARD PLANS APPLY TO THIS PROJECT

- Legend**
- Minimum Excavation Safety Requirements 5-1
 - Brick Manhole 5-2
 - Non-Reinforced Precast Concrete Manhole 5-3
 - Reinforced Precast Concrete Manhole 5-4
 - Manhole Frame and Cover 5-5
 - Manhole Step 5-6
 - Bedding for Sewer pipe 5-7
 - Grading and easement 5-8
 - Wye or Tee Support 5-9
 - Allowable trench width 5-10

REVISIONS

Date	Page	Description	Approved
3-30-70	13	Added new sewer through lots 75 and 84 between Calle Quieta and Avenida de Calma.	
3-30-70	4	Moved M.H. from Sta. 6+83.81 to Sta. 7+46.15	
3-30-70	10	Moved M.H. from Sta. 6+98.25 to Sta. 5+27.35	
3-30-70	14, 7-8	Added 2 1/2" to all stations because of change on Page 4	
		Approved: <u>Harold Valdez</u> date 10/13/70	
		Approved: <u>Harold Valdez</u> date 10/6/70	
1-27-72	3	Revised Profile of Calle La Realina	
1-27-72	3	Revised Profile of Calle Del Pejarito	
1-27-72	1	Added CONNECTION NOTE	
		Approved: <u>Harold Valdez</u> date 1/28/71	
		Approved: <u>Harold Valdez</u> date 10/6/70	

FULL COMPLIANCE WITH SEC. 306-1.23 OF THE SPECIAL ORDINANCES WILL BE REQUIRED FOR BACKFILL IN STREETS, CERTIFICATION OF BACKFILL COMPOSITION AND SAND EQUIVALENTS BY A QUALIFIED REGISTERED TESTING LABORATORY SHALL BE PROVIDED BY THE PERMITTEE PRIOR TO THE ISSUANCE OF A CERTIFICATE OF PARTIAL ACCEPTANCE.

No connections for the disposal of industrial wastes shall be made to sewers shown on these drawings without written permission from the Chief Engineer and General Manager of the County Sanitation Districts.

County Sanitation Districts shall be notified prior to the following so that required inspection can be had. (Phone 333-9066 - 334-3097)

DOUBLE SCALE
LOMITA BLDG. DIST. NO. 12

PROFILE, ALIGNMENT AND GRADE OF
SANITARY SEWERS PAGE 1
 TO BE CONSTRUCTED IN

TRACT No 29115
PRIVATE CONTRACT NO. 8281

W.S. 27
 7 SHEETS, 13 PAGES
 SCALE: VERT. 1" = 8' HORIZ. 1" = 40'
 March, 1969
 PREPARED IN THE OFFICES OF
E.L. PEARSON AND ASSOCIATES
 By: Thomas C. Clark 4-19-69
 REG. C.E. NO. 2757

- NOTES:**
- PROVIDE STAKES ON THE PROPERTY LINE OR PROPERTY LINES PRODUCED AT RIGHT ANGLES TO THE SEWER LINE AT THE CENTER LINE OF EACH MANHOLE.
 - NO REPRESENTATIVE OF THE COUNTY ENGINEER WILL SURVEY OR LAY OUT ANY PORTION OF THE WORK.
 - THE PRIVATE ENGINEER SHALL FURNISH THE COUNTY ENGINEER WITH GRADE SHEETS AND STATIONING FOR ALL HOUSE LATERALS AND 6" V.C.P. BRANCHES AND SHALL PROVIDE STAKES FOR THEM AT THEIR PROPER LOCATIONS WITH STATIONING PLAINLY MARKED. ALL HOUSE LATERALS SHALL BE CONSTRUCTED IN A STRAIGHT ALIGNMENT AT RIGHT ANGLES FROM THE MAIN LINE SEWER EXCEPT AS SHOWN ON THE PLANS. HOUSE LATERALS FROM CHIMNEYS SHALL NOT HAVE AN ANGLE OF LESS THAN 45° WITH THE MAIN LINE SEWER. ANY CHANGE IN ALIGNMENT SHALL BE REQUESTED IN WRITING BY THE PRIVATE ENGINEER.
 - THE PRIVATE ENGINEER SHALL FURNISH THE HOUSE LATERAL SUPPLY AT THE PROPERTY LINE BELOW THE TOP OF CURB ELEVATION FOR EACH HOUSE LATERAL ON THE GRADE SHEET.
 - NO REVISIONS SHALL BE MADE IN THESE PLANS WITHOUT THE APPROVAL OF THE COUNTY ENGINEER.
 - THE CONTRACTOR SHALL NOTIFY THE CONSTRUCTION DIVISION BY TELEPHONE, MADISON 9-4747, EXT. 8158, AT LEAST TWENTY-FOUR HOURS BEFORE STARTING ANY WORK UNDER THIS CONTRACT.
 - All structures shall be within Brick manholes, precast concrete manholes per 5-3 or 5-6, except as noted.
 - Y or T branches may be used for connections to maintain sewer, except as noted.
 - MANHOLE TOPS IN UNIMPROVED RIGHTS-OF-WAY TO BE SIX INCHES ABOVE FINISHED GRADE.
 - USE EXTRA STRENGTH PIPE. ALL PIPE IS STANDARD DEPTH EXCEPT AS NOTED.
 - Unfinished clay pipe joints shall be type D, 12" or 15" per standard specifications for 208-2.
 - IF A POINT IS WITHIN THREE FEET OF THE SEWER, THE SEWER SHALL BE ENCASED, PER 5-25, TWO FEET ON EACH SIDE FROM THE POINT OF INTERFERENCE.
 - IF DURING THE COURSE OF CONSTRUCTION IT IS DETERMINED THAT THERE IS LESS THAN FOUR FEET OF COVER OVER THE TOP OF A MAIN LINE OR HOUSE LATERAL V.C.P. SEWER WHICH IS NOT INDICATED ON THE PLANS, THE PIPE SHALL BE ENCASED PER 5-25, UNLESS OTHERWISE APPROVED BY THE COUNTY ENGINEER.
 - HOUSE LATERALS TO BE CONSTRUCTED WITH INVERTS AT PROPERTY LINE 4 FEET BELOW CURB GRADE EXCEPT AS NOTED.
 - RESURFACE ALL TRENCHES WITHIN PAVED AREAS TO MEET L.A. COUNTY ROAD DEPT. OR CALIFORNIA STATE HIGHWAY REQUIREMENTS IN ACCORDANCE WITH PERMITS.
 - Sewers to be tested for leakage per Section 208-210.7 of the standard specifications.
 - Refer to Section 7-10.4.1 of the standard specifications regarding safety orders.
 - The Contractor shall protect the existing sewer and maintain that portion to be abandoned until such time as the proposed sewer is in place and inspected.
 - Use use salvaged manhole frames and covers.
 - SPECIAL BRICKS IN DESIGNATED AREAS:
 - (A) BRICKS TO BE USED IN PLACE OTHER BRICKS REMOVED SO AS TO MAINTAIN THE ORIGINAL FINISHED SURFACE & LAYERS SHOWN ON THE SEWER PLAN APPROVED FOR THIS TRACT BY THE BUILDING & SAFETY DIVISION.
 - (B) ALL BRICKS & BRICKS REPLACED SHALL BE COMPARED TO A MINIMUM OF 90% OF ORIGINAL QUALITY PER A.C.P. 1-11.1.5. PROFILES AND SEWER PLAN SHALL BE SUBMITTED TO THE ACCEPTABLE CERTIFICATION OF SUCH CONTRACTOR SHALL BE SUBMITTED TO THE CONSTRUCTION DIVISION.

COLLECT CHARGES AS INDICATED

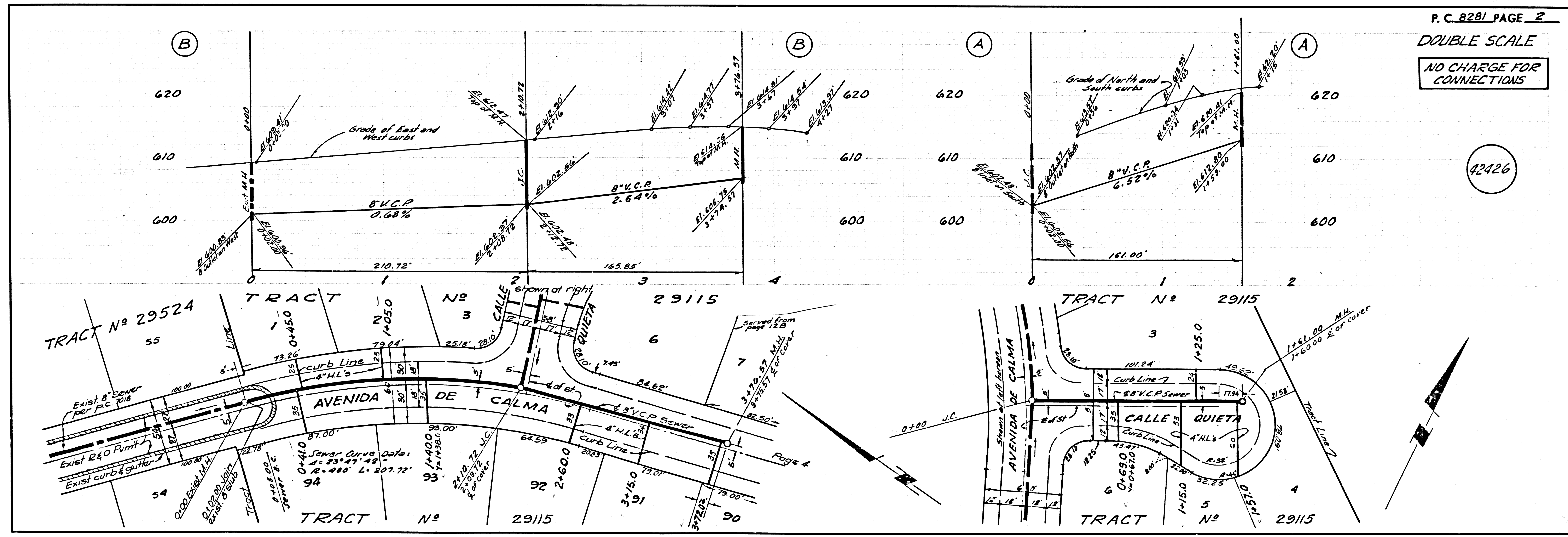
NOTICE TO CONTRACTOR
 The existence and location of any underground utility pipes or structures shown on these plans are obtained by a search of the available records. The contractor is required to take due precautionary measures to protect the utility lines shown and any other lines not of record or not shown on these plans.
Thomas C. Clark
 REG. C.E. NO. 2757

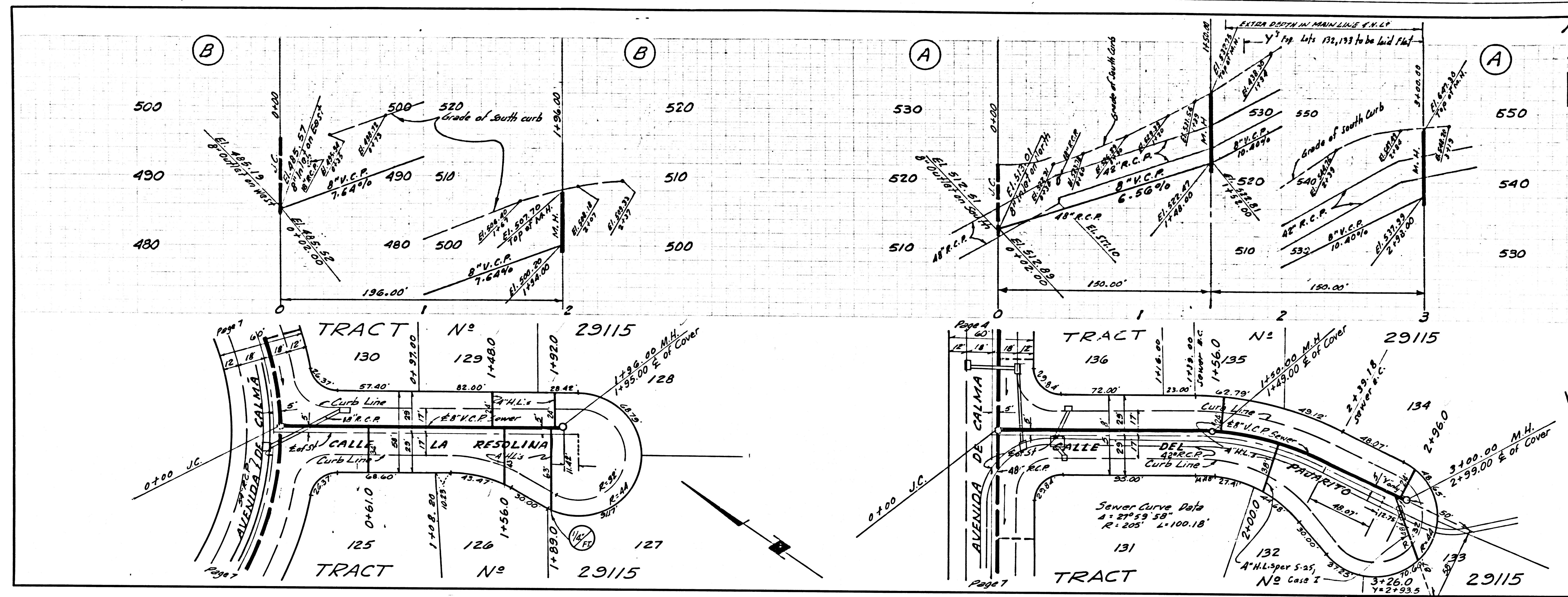
GRADES TO WHICH THIS IMPROVEMENT IS TO BE CONSTRUCTED ARE SHOWN ON PLANS AND PROFILE. GRADE POINTS FOR TOP OF CURB, CENTER LINE OF STREETS, OR CENTER LINE OF ALLEYS ARE SHOWN BY CIRCLES ON PROFILE. AT ALL POINTS BETWEEN DESIGNATED POINTS THE GRADE SHALL BE ESTABLISHED SO AS TO CONFORM TO A STRAIGHT LINE BETWEEN SAID DESIGNATED POINTS. ELEVATIONS ARE IN FEET ABOVE U.S.C. & G.S. MEAN SEA LEVEL DATUM OF 1929.

CONTRACTOR SHALL BE RESPONSIBLE FOR THE PROTECTION OF ALL UTILITIES SHOWN ON THESE PLANS. THE CONTRACTOR SHALL OBTAIN A PERMIT TO EXCAVATE IN COUNTY STREETS FROM THE L.A. COUNTY ROAD DEPT., DISTRICT OFFICE AND FROM THE COUNTY ENGINEER, ROOM 308, COUNTY ENGINEERING BUILDING, 100 WEST SECOND STREET, LOS ANGELES, CALIFORNIA. REGIONAL OFFICE, SANITARY TO COVER THE COST OF CONSTRUCTION INSPECTION AND SECOND PLANS.

APPROVAL OF THIS PLAN BY THE COUNTY OF LOS ANGELES DOES NOT CONSTITUTE A REPRESENTATION AS TO THE ACCURACY OF THE LOCATION OR THE EXISTENCE OR NON-EXISTENCE OF ANY UNDERGROUND UTILITY PIPE, OR STRUCTURE WITHIN THE LIMITS OF THE PROJECT. THIS NOTE APPLIES TO ALL RIGHTS OF WAY AND TO ALL STRUCTURES WITHIN THE LIMITS OF THE PROJECT. A PERMIT MUST BE OBTAINED FROM THE STATE OF CALIFORNIA, DIVISION OF HIGHWAYS, THE SOUTH SPRING STREET, LOS ANGELES, CALIFORNIA.

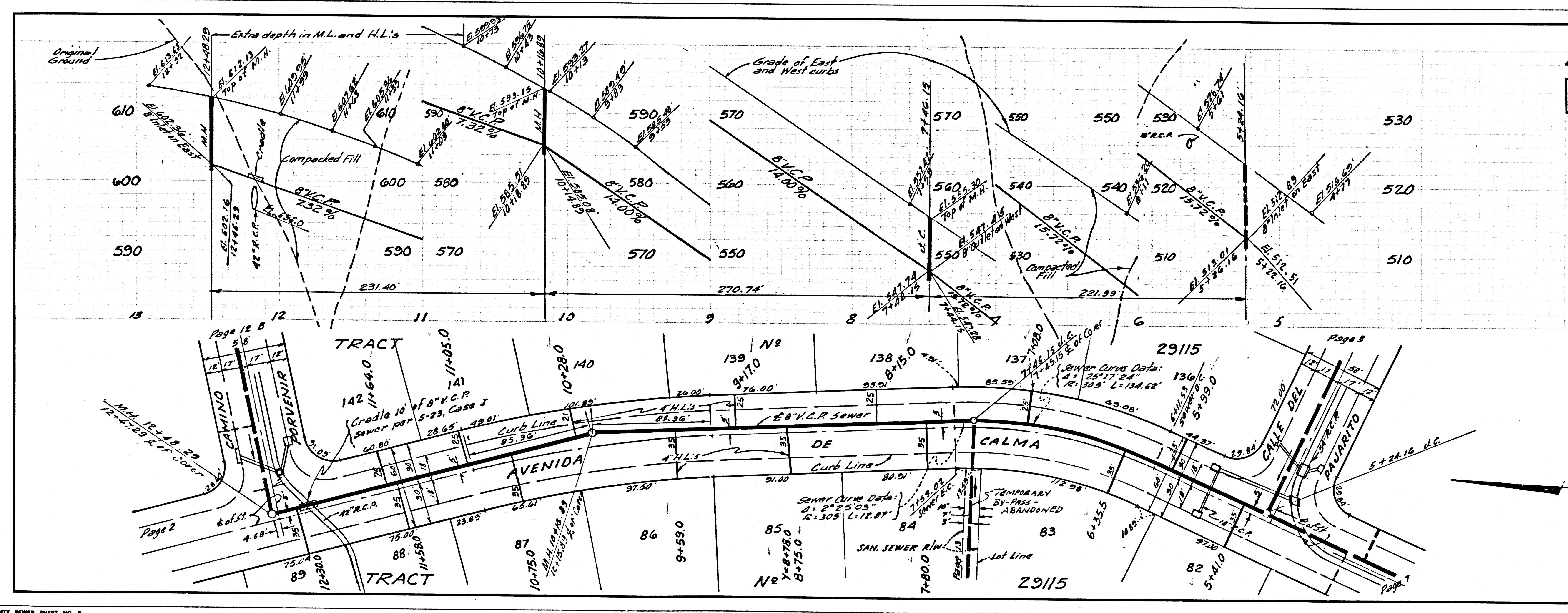
COUNTY OF LOS ANGELES, CALIFORNIA
 JOHN A. LAMBIE, COUNTY ENGINEER
 APPROVED BY: Robert Williams Regional Engineer
 J. D. PARKHURST, CHIEF ENGINEER
 APPROVED BY: Harold Valdez OFFICE ENGINEER
 CHECKED BY: Harold Valdez 2/5/70
 REG. C.E. NO. 10653





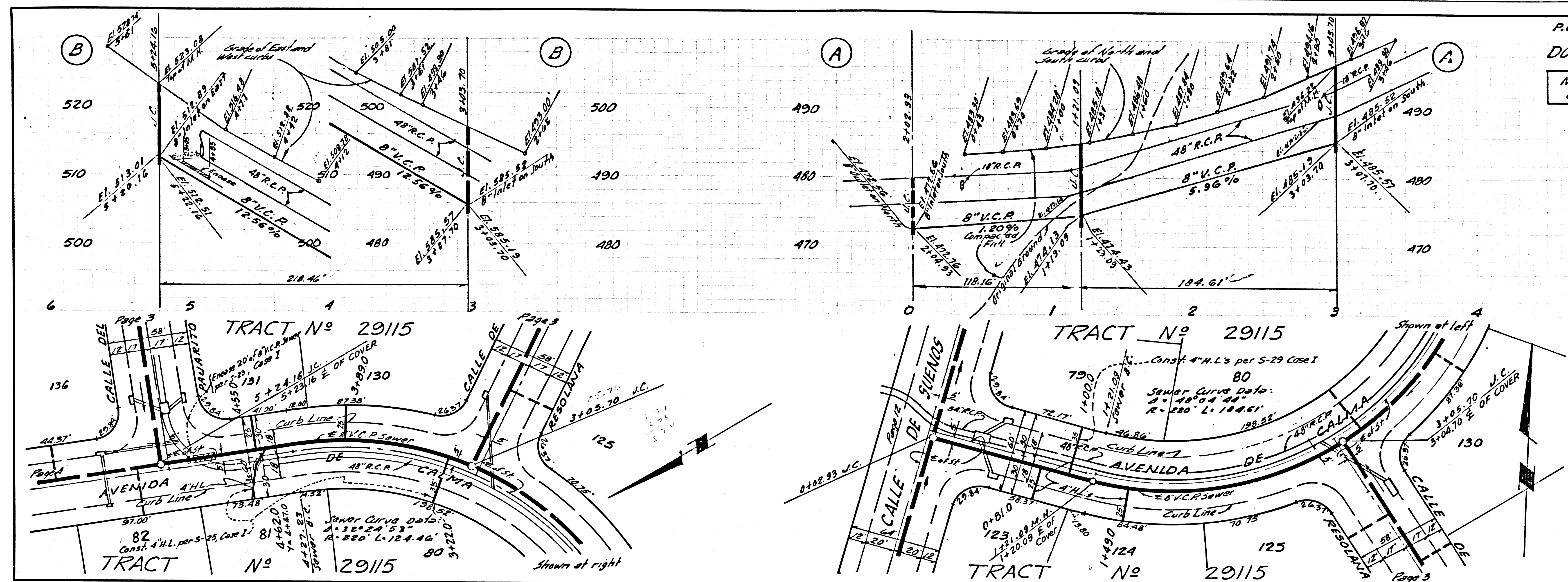
P.C. 8281 PAGE 3
 DOUBLE SCALE
 NO CHARGE FOR CONNECTIONS

42427



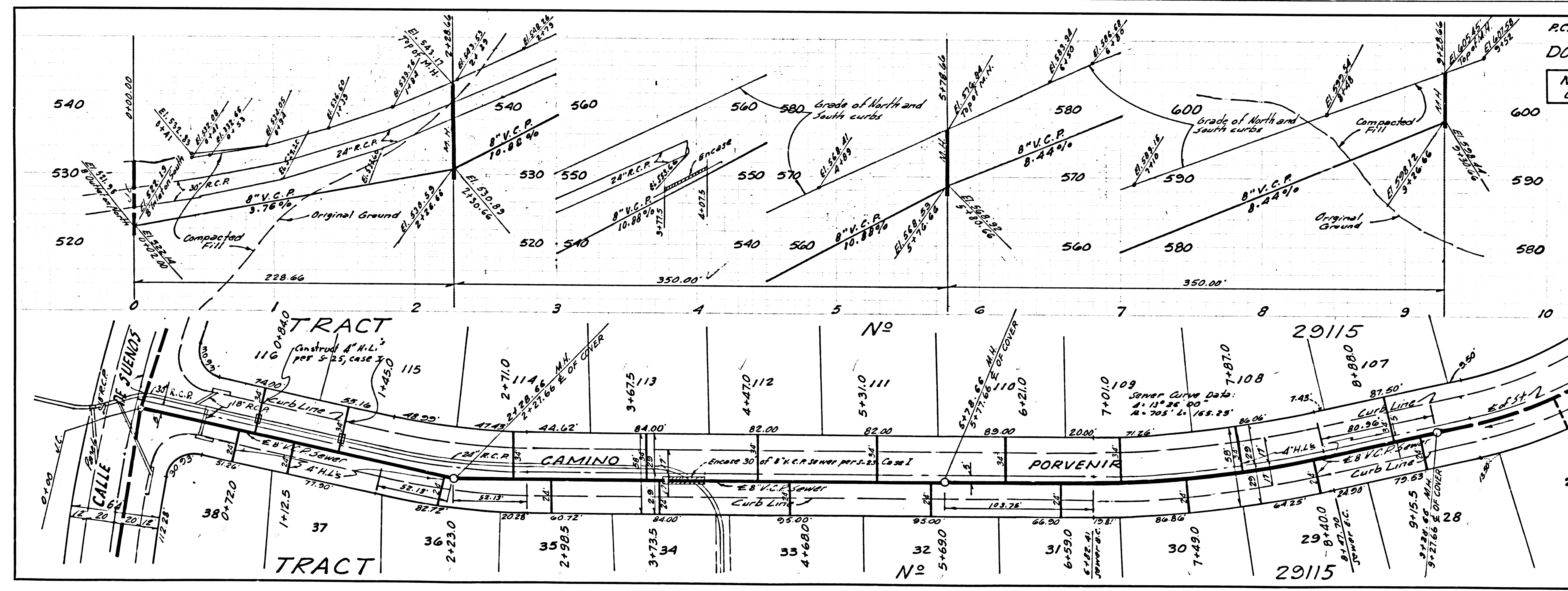
P.C. 8281 PAGE 4
 DOUBLE SCALE
 NO CHARGE FOR CONNECTIONS

42428



P.C. 8281 PAGE 7
 DOUBLE SCALE
 NO CHARGE FOR CONNECTIONS

42431



P.C. 8281 PAGE 8
 DOUBLE SCALE
 NO CHARGE FOR CONNECTIONS

42432

