

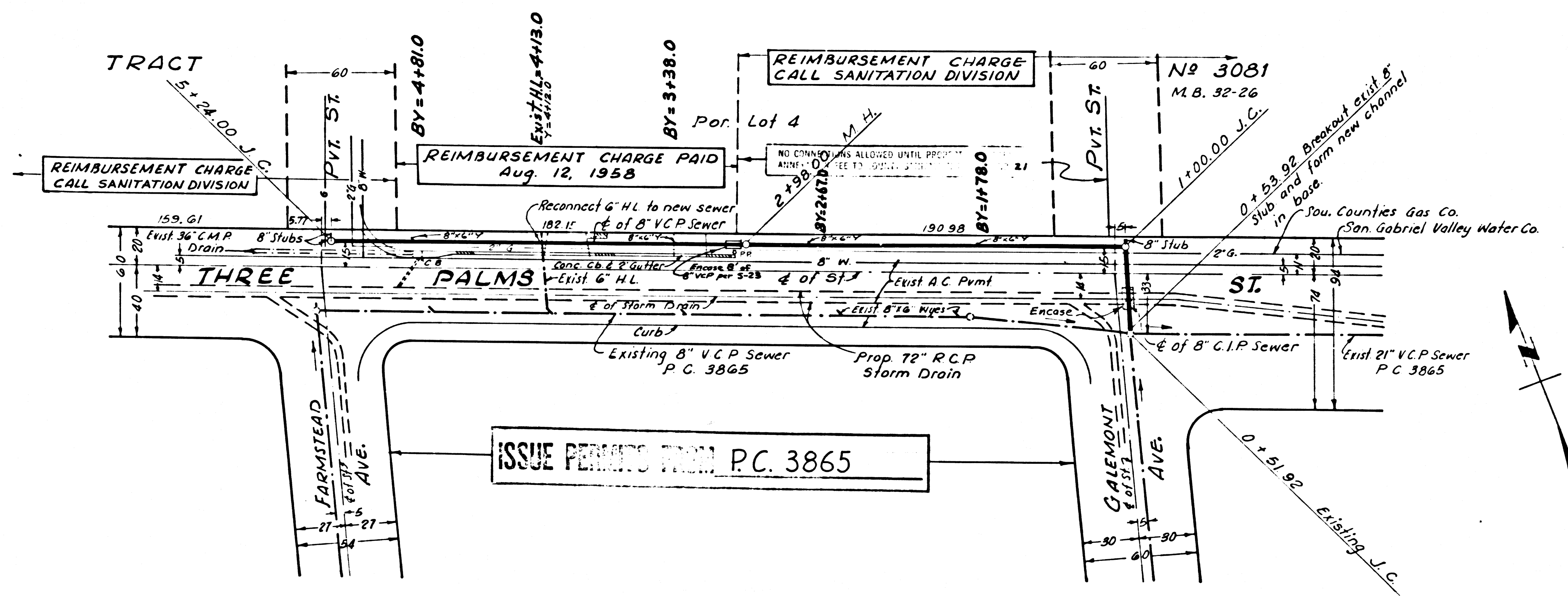
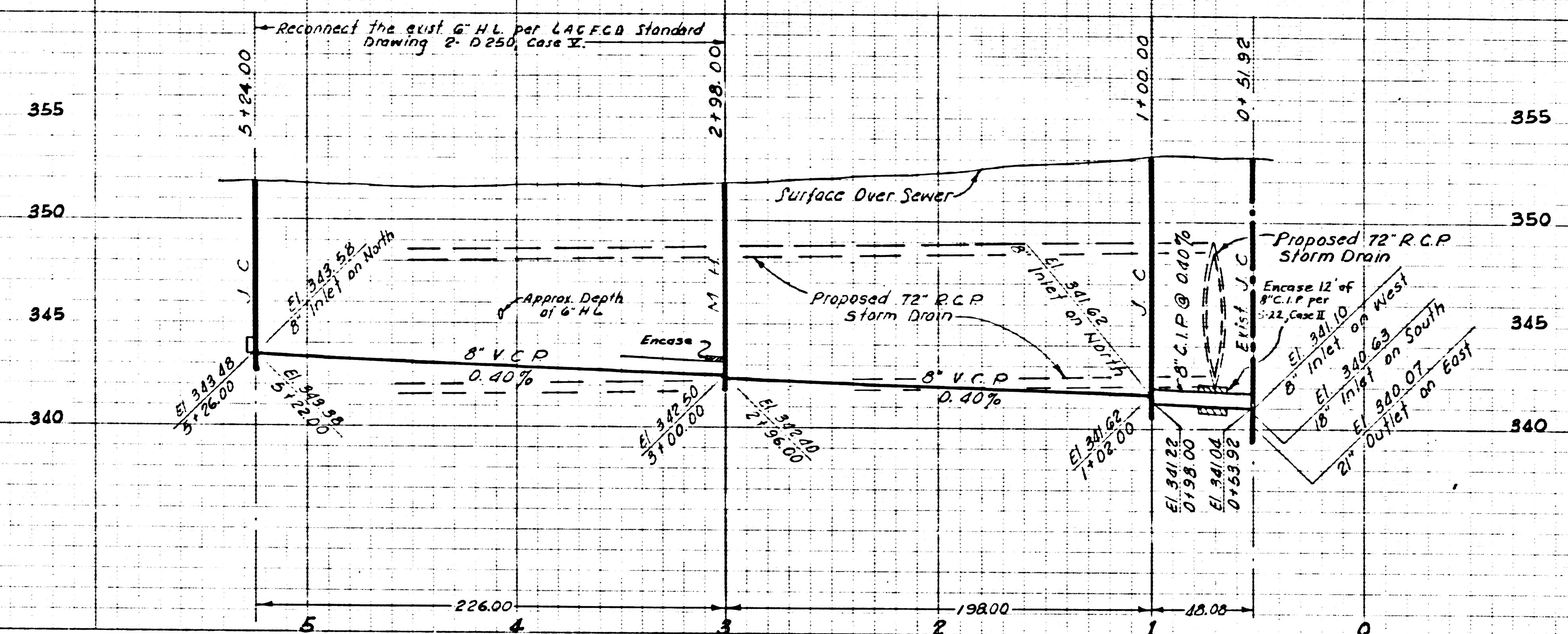
PROFILE SCALE
HORIZ: 1" = 40'
VERT: 1" = 4'

COLLECT CHARGES
AS INDICATED

GENERAL SEWER NOTES

- Sanitary sewers shall be constructed in accordance with the Standard Specifications for Public Work Construction (hereinafter referred to as Standard Specifications), Special Provisions and Standard Plans on file in the office of the County Engineer.
- Sewer pipes and appurtenances shall be abandoned in accordance with Sec 206-3 of Sid Specs.
- Refer to Sec 7.10.41 of Sid Specs, regarding safety orders.
- Exist sewer services and flow shall be maintained at all times.
- All cast iron pipes and joints shall be in accordance with Secs 207.91(a) and 207.97 of Special Provisions.
- The Contractor shall notify the Construction Div. of the County Engineer by Tel 625-4747, Ext 8155, 24 hours before starting any work under this contract.
- In addition to Sid Specs listed above, the following latest revised Sid Plans shall apply in the construction of this project:
S-1, S-2, S-3, S-4, S-10, S-11, S-12, S-13, S-14, S-15, S-16, S-17, S-18, S-19, S-20, S-21, S-22, S-23.

B.M. S.D. 1636, E.I. 352.979, I.B. 3303-10
S.W. Cor. Three Palms St & Galemont Ave.
#1 Spc. in lead in ca. 8' W of W.E.C.R.



41018

County Sanitation Districts shall be notified prior to the following so that required inspection can be made (Phone 337-1025 - 600-3099)
Acceptance of the project.

No connections for the disposal of industrial waste shall be made to sewers shown on these drawings without written permission from the Chief Engineer and General Manager of the County Sanitation Districts.

1964 STORM DRAIN BOND ISSUE
LOS ANGELES COUNTY
FLOOD CONTROL DISTRICT

REVISIONS			
MARK	DATE	DESCRIPTION	

PREPARED BY
JOHN A. LAMBIE
COUNTY ENGINEER
C. C. 8282
RECOMMENDED BY
P. C. 8282
4-15-69
DESIGNED BY
P. C. 8282
4-15-69
CHECKED BY
P. C. 8282
4-15-69
APPROVED BY
JOHN D. PARKHURST
CHIEF ENGINEER
CO SAN DIST NO 21
P. C. 8282
4-15-69

STA.	TO STA.

PLAN AND PROFILE

RECOMMENDED BY	APPROVAL RECOMMENDED BY

SCALE	DATE	DWG. NO.
HORIZ: 1" = 40'	APRIL 1969	
VERT: 1" = 4'		