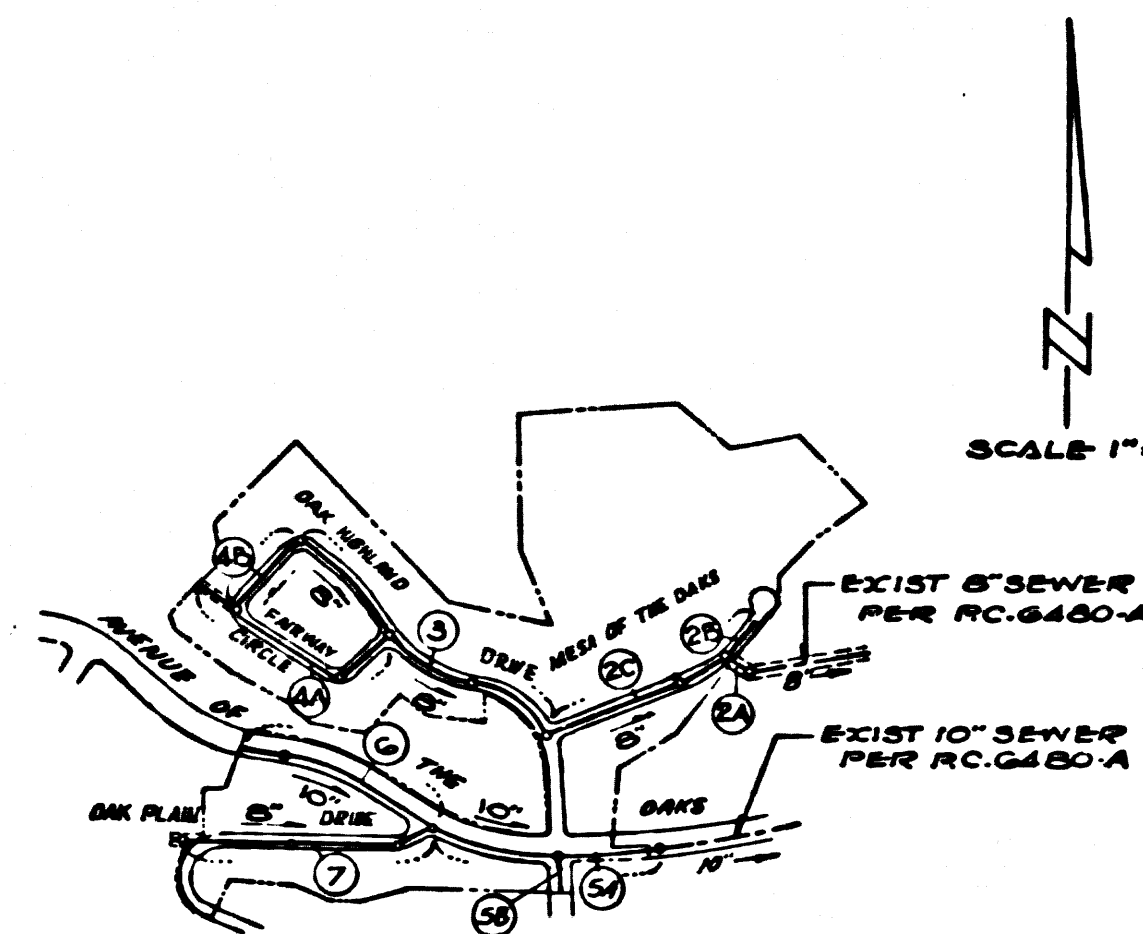


B.M. D.L. 2800 ELEV. 1550.654
 RD. 0.51 TAB S.E. COR. SIERRA HWY. &
 FRIENDLY VALLEY PKWY. 20 FT. S. &
 TO FT. S. CL. INT.
 NEWHALL QUAD. 1965

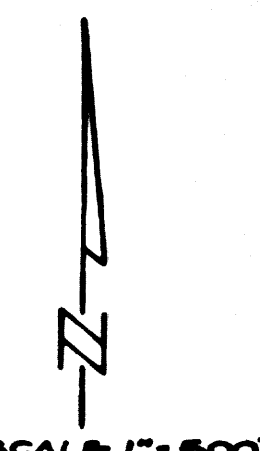


INDEX MAP
 TRACT NO 29546
 P.C. 8283

NOTE: NUMBERS IN CIRCLES INDICATE PAGE NUMBERS.

THE ACCURACY OF THE LOCATION OF OR THE EXISTENCE OR NON-EXISTENCE OF ANY UTILITY PIPE OR STRUCTURE WITHIN THE LIMITS OF THIS PROJECT DOES NOT CONSTITUTE RESPONSIBILITY BY THE ENGINEER.

NOTE: ALL STREETS AND ALLEYS ARE PRIVATE AND ARE LOTS WITHIN THE TRACT. EACH IS A SANITARY SEWER R/W.



REVISION:
 ADD N.L.S. ON THE FOLLOWING PAGES
 PAGE 5 1-25.00 TO SERVE LOT 85, TR 29546
 PAGE 5 3-30.00 TO SERVE LOT 85, TR 30701
 ENCASE UNDER GAS LINE
 APPROVED [Signature] 1-22-72
 REG. C.E. 14,930
 OFFICE OF COUNTY ENGINEER

REVISION:
 M.H. AT STA. 5+87.62 PAGE 7
 CHANGED FROM 5-3 TO 5-6
 APPROVED [Signature] 1-18-72
 OFFICE OF COUNTY ENGINEER
 REG. C.E. 14390

REVISION:
 SEPT. 25, 1963
 LOWER SEWER ON TULLOCHAN PAGES
 BETWEEN STATIONS 5+00 TO 5+10
 NEW 12" WATER LINE
 PAGE 5-4 5+00 TO 5+54.00
 PAGE 5-6 5+54.00 TO 5+70.00
 PAGE 7 5+70.00 TO 1+30.00
 RELATE & NO. ENCASUREMENT IN CL. TO CURBLINE
 APPROVED [Signature] 1-22-62
 OFFICE OF COUNTY ENGINEER
 REG. C.E. 14390

County Sanitation Stations shall be notified prior to the following so that required inspection can be made (Phone 527-1005 - 406-8897)

Sanitation of the project.

In connection with the placement of industrial wastes shall be made to persons shown on these drawings without written permission from the Chief Engineer and General Manager of the County Sanitation Stations.

COLLECT CHARGES AS INDICATED

NEWHALL BLDG. DIST. NO. 82

- NOTES:
- HOUSE LATERALS TO BE CONSTRUCTED WITH INVERTS AT PROPERTY LINE 6 FEET BELOW CURB GRADE EXCEPT AS NOTED.
 - PROPOSED STAIRS ON THE PROPERTY LINE OR PROPERTY LINES PRODUCED AT RIGHT ANGLES TO THE SEWER LINE AT THE CENTER LINE OF EACH MANHOLE.
 - NO REPRESENTATIVE OF THE COUNTY ENGINEER WILL SURVEY OR LAY OUT ANY PORTION OF THE WORK.
 - THE PRIVATE ENGINEER SHALL FURNISH THE COUNTY ENGINEER WITH GRADE SHEETS AND EXISTING FOR ALL HOUSE LATERALS AND 12" MANHOLES AND SHALL PROVIDE STAIRS FOR THEM AT THESE PROPOSED LOCATIONS WITH STATIONING PLAINLY MARKED. ALL HOUSE LATERALS SHALL BE CONSTRUCTED AT RIGHT ANGLES FROM THE MAIN LINE SEWER EXCEPT AS SHOWN ON THE PLANS. HOUSE LATERALS FROM CHIMNEYS SHALL NOT HAVE AN ANGLE OF LESS THAN 45° WITH THE MAIN LINE SEWER. ANY CHANGE IN ALIGNMENT SHALL BE REQUESTED IN WRITING BY THE PRIVATE ENGINEER.
 - THE PRIVATE ENGINEER SHALL FURNISH THE HOUSE LATERAL INVERTS AT THE PROPERTY LINE BELOW THE TOP OF CURB ELEVATION FOR EACH HOUSE LATERAL ON THE GRADE SHEET.
 - NO REVISIONS SHALL BE MADE IN THESE PLANS WITHOUT THE APPROVAL OF THE COUNTY ENGINEER.
 - THE CONTRACTOR SHALL NOTIFY THE CONSTRUCTION DIVISION BY TELEPHONE, MAILBOX 9-474, ST. 1548, AT LEAST TWENTY-FOUR HOURS BEFORE STARTING ANY WORK UNDER THIS CONTRACT.
 - ALL STRUCTURES SHALL BE IN THE BRICK MANHOLES PER 5-3 OR PRECAST CONCRETE MANHOLES PER 5-3 ON 5-4, EXCEPT AS NOTED.
 - "T" MANHOLES SHALL BE USED FOR CONNECTIONS TO MAINLINE SEWERS.
 - MANHOLES SHALL BE APPROVED BEFORE ANY WORK IS TO BE DONE. THE PRIVATE ENGINEER SHALL BE RESPONSIBLE FOR THE APPROVAL OF THE COUNTY ENGINEER.
 - USE EXTRA STRENGTH PIPE ALL PIPE IS STANDARD DEPTH EXCEPT AS NOTED.
 - VENTS SHALL BE 12" DIA. JOINTS SHALL BE TYPE "W", "V", OR "N" PER STANDARD SPECIFICATIONS SECTION 386.2.
 - IF A JOINT IS WITHIN THREE FEET OF THE SEWER, THE SEWER SHALL BE ENCASED, PER 5-26, TWO FEET ON EACH SIDE FROM THE POINT OF INTERFERENCE.
 - IF DURING THE COURSE OF CONSTRUCTION IT IS DETERMINED THAT THERE IS LESS THAN FOUR FEET OF COVER OVER THE TOP OF A MAIN LINE OR HOUSE LATERAL T.C.V. SEWER WHICH IS NOT INDICATED ON THE PLANS, THE PIPE SHALL BE ENCASED PER 5-26, UNLESS OTHERWISE APPROVED BY THE COUNTY ENGINEER.
 - RETRACT ALL IMPROVEMENTS WITHIN PAVED AREAS TO MEET L.A. COUNTY ROAD DEPT. OR CALIFORNIA STATE HIGHWAY REQUIREMENTS IN ACCORDANCE WITH PERMITS.
 - SEWER TO BE TESTED FOR LEAKAGE PER SECTION 386.2.7 OF THE STANDARD SPECIFICATIONS.
 - REFER TO SECTION 7-9.4.1 OF THE STANDARD SPECIFICATIONS, REGARDING SAFETY CORDERS.
 - ALL JOINTS BETWEEN CAST IRON PIPE AND VENTING CLAY PIPE SHALL BE MADE WITH A RUBBER SEWER JOINT, TYPE "C" OR "D", WITH RUBBER AS NECESSARY PER STANDARD SPECIFICATIONS, SECTION 386.2.
 - THE FOLLOWING LATEST REVISED STANDARD PLANS ON FILE IN THE OFFICE OF THE COUNTY ENGINEER SHALL APPLY IN THE CONSTRUCTION OF THIS PROJECT:

MINIMUM PUBLIC SAFETY REQUIREMENTS	5-3
BRICK MANHOLE	5-3
NON-REINFORCED PRECAST CONCRETE MANHOLE	5-3
REINFORCED PRECAST CONCRETE MANHOLE	5-4
MANHOLE FRAME AND COVER	5-13
STANDARD MANHOLE FITTING	5-17
SEWERING FOR SEWER PIPE	5-21
CHANGING AND ENCASUREMENT	5-23
VENT ON THE SUPPORT	5-26
ALTERNATE TRINCH SYSTEM	5-28

NOTE: CONTRACTOR SHALL NOTIFY THE SOU. CALIF. GAS CO. AT LEAST 48 HOURS PRIOR TO EXCAVATING IN THE VICINITY OF THE 30" N.P. GAS LINE - TEL. 806, 253-4000, MR. CHUCK SHAEFFER - EXT. 388

PROFILE, ALIGNMENT AND GRADE OF
 SANITARY SEWERS P.C. 8283
 CONSTRUCTED IN PAGE 1

TRACT NO 29546
 PRIVATE CONTRACT NO. 8283
 259 S. 141
 W.S. 62

4 SHEETS; 7 PAGES
 SCALE: HORIZ. 1" = 40' VERT. 1" = 4'
 APRIL, 1969
 PREPARED IN THE OFFICES OF
 MCINTIRE & QUIROS INC.
 670 MONTEREY PAS. ROAD, MONTEREY PARK, CALIF.
 REG. C.E. NO. 14197

NOTE: GRADE TO WHICH THIS IMPROVEMENT IS TO BE CONSTRUCTED ARE SHOWN ON PLANS AND PROPOSED GRADE POINTS FOR TOP OF CURB, CENTER LINE OF STREETS, OR CENTER LINE OF ALLEYS ARE SHOWN BY CIRCLES OR SQUARES. AT ALL POINTS BETWEEN PROPOSED GRADE POINTS THE GRADE SHALL BE ESTABLISHED SO AS TO CONFORM TO A STRAIGHT LINE DRAWN BETWEEN SAID DESIGNATED POINTS. SEWER LINES ARE BY FEET ABOVE 5.0 & 5.5 FEET ABOVE GRADE OF FINISH.

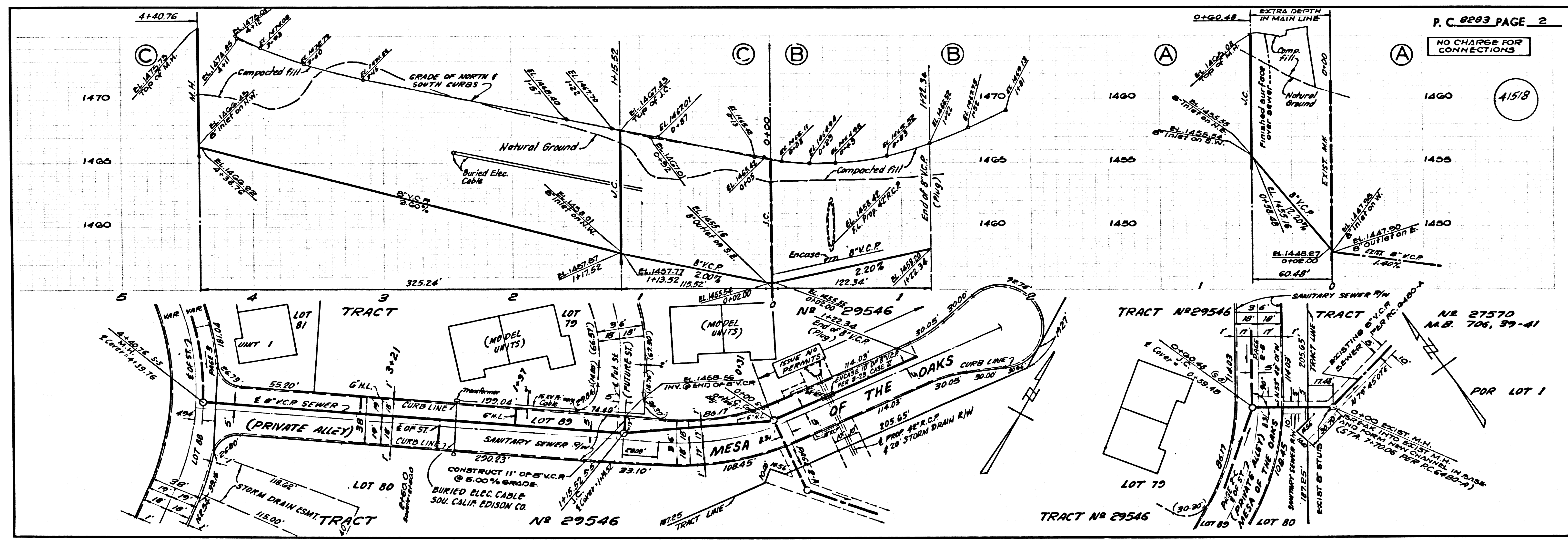
WORK SHALL BE CONSTRUCTED ACCORDING TO THE STANDARD SPECIFICATIONS FOR PUBLIC WORKS CONSTRUCTION AND SPECIAL PROVISIONS FOR THE CONSTRUCTION OF SANITARY SEWERS BATH AND J.B. THIS IS REVISED, AND SHALL BE PROSECUTED ONLY IN THE PRESENCE OF THE COUNTY ENGINEER.

WORK UNDER THIS CONTRACT SHALL BE SUBJECT TO THE SUPERVISION OF THE COUNTY ENGINEER, ROOM 138, COUNTY ENGINEERING BUREAU, 148 WEST SECOND STREET OR ... OFFICE.

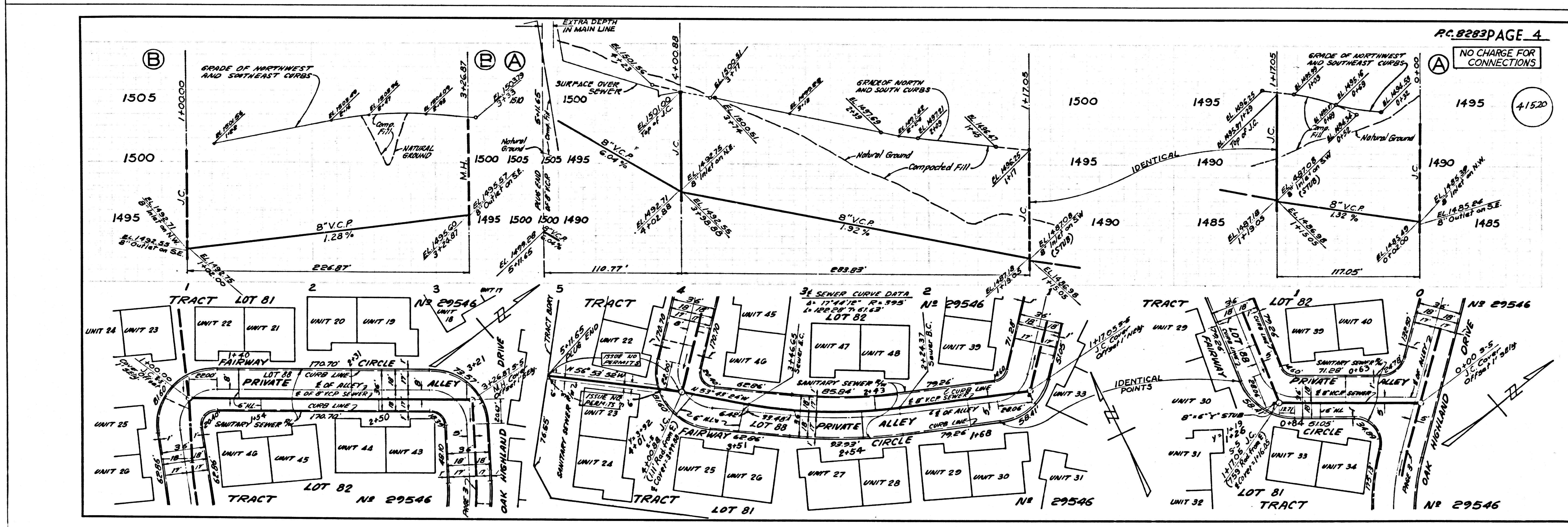
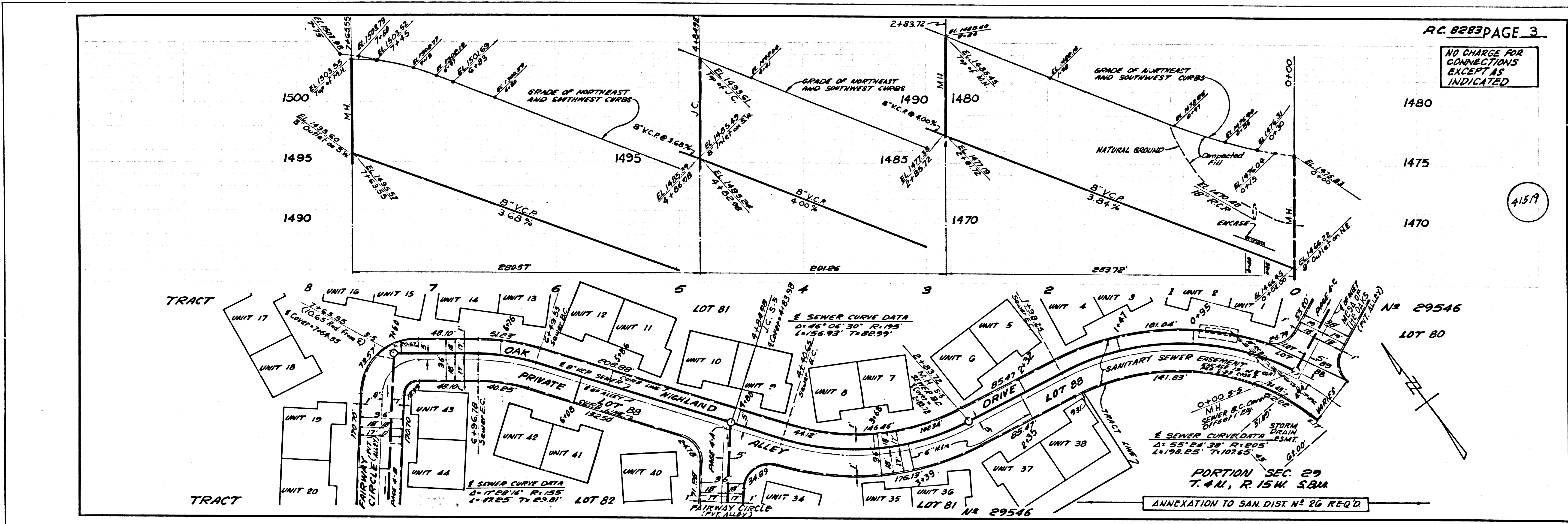
APPROVAL OF THIS PLAN BY THE COUNTY OF LOS ANGELES DOES NOT CONSTITUTE A REPRESENTATION AS TO THE ACCURACY OF THE LOCATION OF OR THE EXISTENCE OR NON-EXISTENCE OF ANY UNDERGROUND UTILITY PIPE, OR STRUCTURE WITHIN THE LIMITS OF THIS PROJECT. THIS NOTE APPLIES TO ALL PAGES.

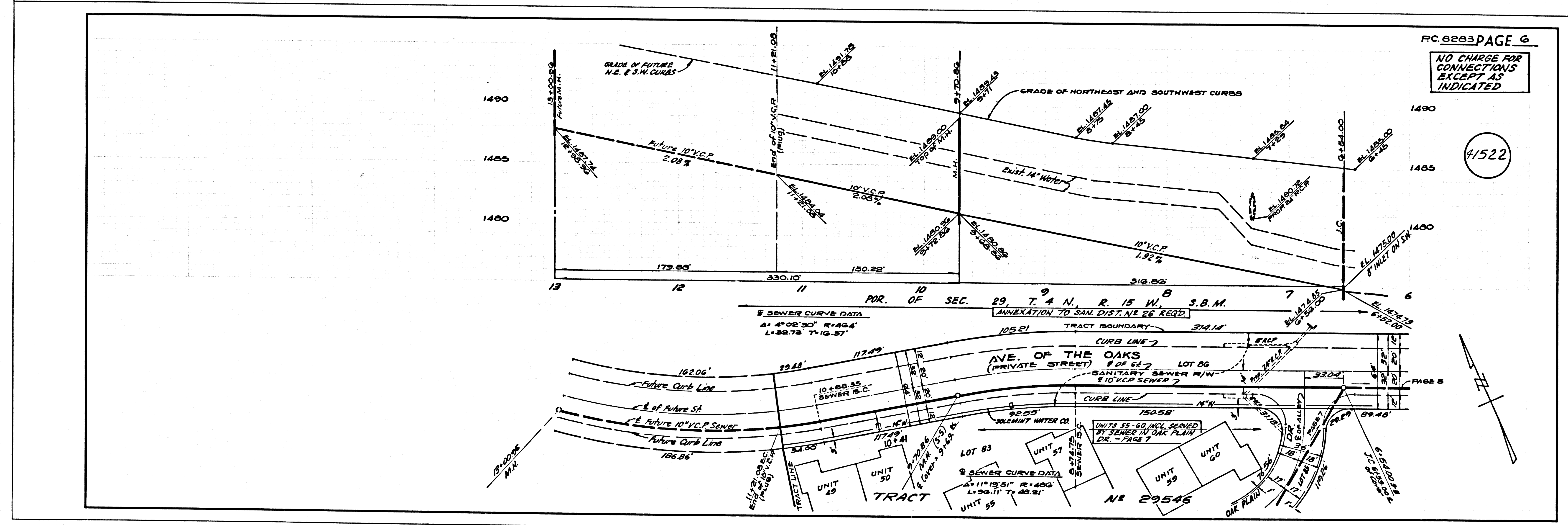
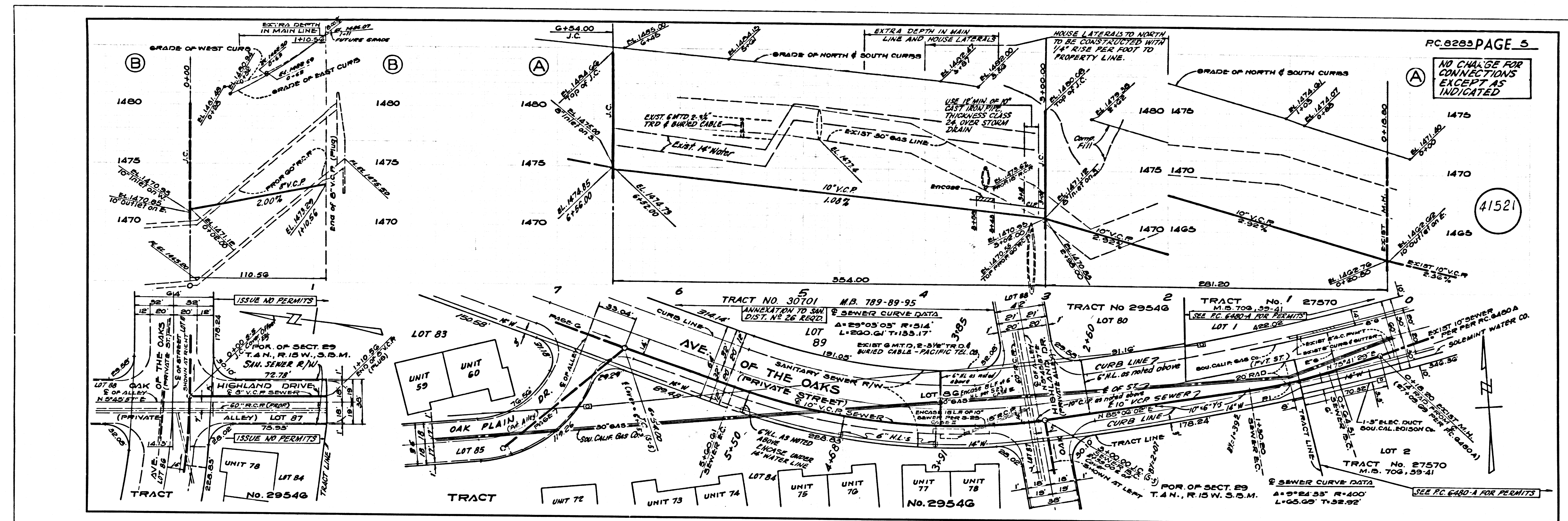
IF WORK IS TO BE DONE IN A STATE HIGHWAY, A PERMIT MUST BE OBTAINED FROM THE STATE OF CALIFORNIA, DIVISION OF HIGHWAYS, 126 SOUTH SPRING STREET, LOS ANGELES, CALIFORNIA.

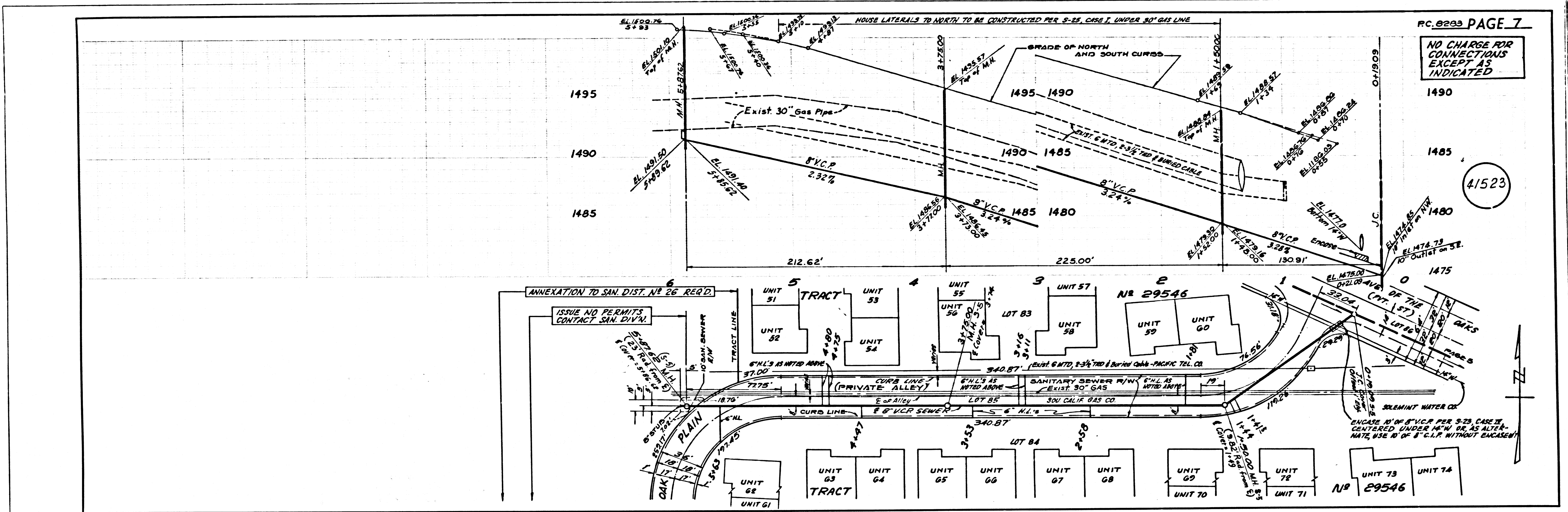
COUNTY OF LOS ANGELES, CALIFORNIA
 JOHN A. LAMBE, COUNTY ENGINEER J. D. PARKHURST, CHIEF ENGINEER
 APPROVED BY [Signature] 1-22-69 APPROVED BY [Signature] 1-22-69
 COUNTY ENGINEER DATE OFFICE ENGINEER
 CHECKED BY [Signature] 7-11-69
 REG. C.E. NO. 13406



P.C. 8283 PAGE 2
 NO CHARGE FOR CONNECTIONS
 (15/8)







RC. 8223 PAGE 7
 NO CHARGE FOR CONNECTIONS EXCEPT AS INDICATED

41523