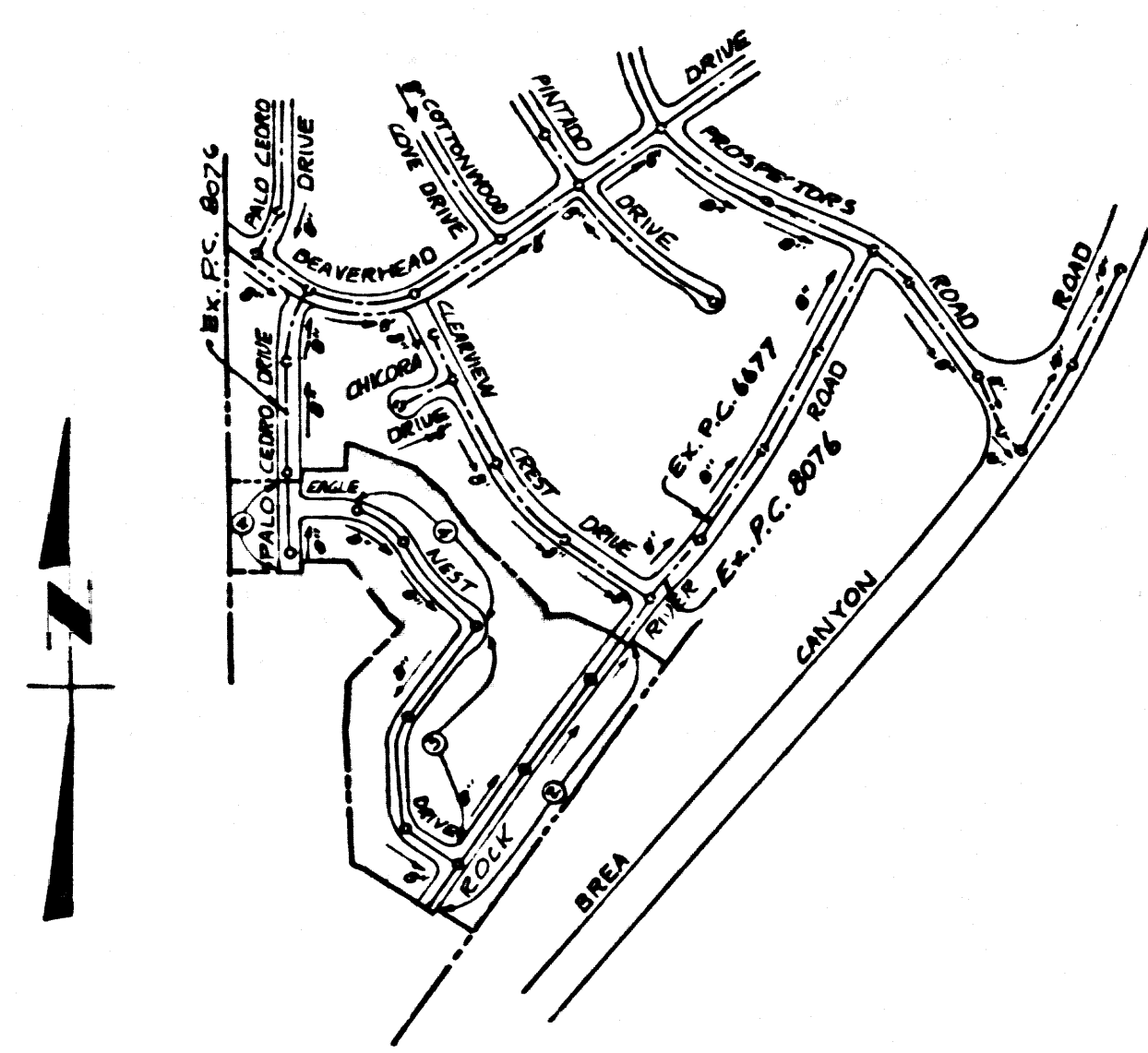


B.M. 56 2061 ELEV. 719.998
 RD. BM. TAG IN CONC. WALK
 AROUND FOUNTAIN G. E. OF W.
 EDGE & 76' ELY. ± 161' SLY. ± INT BREA
 CANYON ROAD & DIAMOND BAR BLVD.
 OTTERBEIN QUAD. 19.55



INDEX MAP
 TR. No. 28039
 P.C. 8285
 SCALE: 1" = 600'

ISSUE NO HOUSE
 CONNECTION PERMITS
 UNTIL P.C. 8076 IS ACCEPTED

SAN DIMAS BLDG. DIST. NO. 10

PROFILE ALIGNMENT AND GRADE OF
 SANITARY SEWERS P.C. 8285
 CONSTRUCTED IN PAGE 1

TRACT No. 28039

PRIVATE CONTRACT NO. 8285

W.S. 39C-2

2 SHEETS; 4 PAGES

SCALE: VERT. 1" = 4' APRIL, 1969

PREPARED IN THE OFFICES OF

KEMMERER ENGR. CO. INC.

6705 SOUTH PAINTER AVE., WHITTIER, CALIF.

By Robert P. Filice REG. C. E. NO. 11342

- NOTES:
1. PROVIDE STAKES ON THE PROPERTY LINE OR PROPERTY LINES PRODUCED AT RIGHT ANGLES TO THE SEWER LINE AT THE CENTER LINE OF EACH MANHOLE.
 2. NO REPRESENTATIVE OF THE COUNTY ENGINEER WILL SURVEY OR LAY OUT ANY PORTION OF THE WORK.
 3. THE PRIVATE ENGINEER SHALL FURNISH THE COUNTY ENGINEER WITH GRADE SHEETS AND STATIONING FOR ALL HOUSE LATERALS AND "T" OR "Y" BRANCHES AND SHALL PROVIDE STAKES FOR THEM AT THEIR PROPER LOCATIONS WITH STATIONING PLAINLY MARKED. ALL HOUSE LATERALS SHALL BE CONSTRUCTED IN A STRAIGHT ALIGNMENT AT RIGHT ANGLES FROM THE MAIN LINE SEWER EXCEPT AS SHOWN ON THE PLANS. HOUSE LATERALS FROM CHIMNEYS SHALL NOT HAVE AN ANGLE OF LESS THAN 45° WITH THE MAIN LINE SEWER. ANY CHANGE IN ALIGNMENT SHALL BE REQUESTED IN WRITING BY THE PRIVATE ENGINEER.
 4. THE PRIVATE ENGINEER SHALL FINISH THE HOUSE LATERAL DEPTH AT THE PROPERTY LINE BELOW THE TOP OF CURB ELEVATION FOR EACH HOUSE LATERAL ON THE GRADE SHEET.
 5. NO REVISIONS SHALL BE MADE IN THESE PLANS WITHOUT THE APPROVAL OF THE COUNTY ENGINEER.
 6. THE CONTRACTOR SHALL NOTIFY THE CONSTRUCTION DIVISION BY TELEPHONE, MADISON 9-427, EXT. 81551, AT LEAST TWENTY-FOUR HOURS BEFORE STARTING ANY WORK UNDER THIS CONTRACT.
 7. ALL STRUCTURES SHALL BE EITHER BRICK MANHOLES PER 2-3 OR PRECAST CONCRETE MANHOLES PER 2-3 OR 2-4, EXCEPT AS NOTED.
 8. "T" OR "Y" BRANCHES MAY BE LISTED FOR CONNECTIONS TO MAIN LINE SEWERS EXCEPT AS NOTED.
 9. MANHOLE TOPS IN UNIMPROVED RIGHTS-OF-WAY TO BE SIX INCHES ABOVE FINISHED GRADE.
 10. USE EXTRA STRENGTH PIPE. ALL PIPE IS STANDARD DEPTH EXCEPT AS NOTED.
 11. VITRIFIED CLAY PIPE JOINTS SHALL BE TYPE "D", "E" OR "F" PER STD. SPEC. REG. 808 - 2.
 12. IF A POWER POLE IS WITHIN THREE FEET OF THE SEWER, THE SEWER SHALL BE ENCASED, PER 2-23, TWO FEET ON EACH SIDE FROM THE POINT OF INTERFERENCE.
 13. IF DURING THE COURSE OF CONSTRUCTION IT IS DETERMINED THAT THERE IS LESS THAN FOUR FEET OF COVER OVER THE TOP OF A MAIN LINE OR HOUSE LATERAL V.C.P. SEWER WHICH IS NOT INDICATED ON THE PLANS, THE PIPE SHALL BE ENCASED PER 2-23, UNLESS OTHERWISE APPROVED BY THE COUNTY ENGINEER.
 14. HOUSE LATERALS TO BE CONSTRUCTED WITH INVERTS AT PROPERTY LINE 6 FEET BELOW CURB GRADE EXCEPT AS NOTED.
 15. RESURFACE ALL TRENCHES WITHIN PAVED AREAS TO MEET L.A. COUNTY ROAD DEPT. OR CALIFORNIA STATE HIGHWAY REQUIREMENTS IN ACCORDANCE WITH PERMITS.
 16. SEWERS TO BE TESTED FOR LEAKAGE PER SECTION 204-2.7 UNIFORM STANDARD SPECIFICATIONS.
 17. REFER TO SECTION 7-10, 4.1 OF THE STANDARD SPECIFICATIONS REGARDING SAFETY ORDERS.
 18. ALL JOINTS BETWEEN CAST IRON PIPE AND VITRIFIED CLAY PIPE SHALL BE MADE WITH RUBBER SLEEVE JOINT, TYPE "C" OR "D" (WITH BUSHING IF NECESSARY) PER STANDARD SPECIFICATIONS, SECTION 208-2.

County Sanitation Districts shall be contacted prior to the following so that required inspection can be made (Phone 337-1026 x 440-8999)

Asystance of the project.
 In connections for the disposal of industrial wastes shall be made to sewers shown on these drawings without written permission from the Chief Engineer and General Manager of the County Sanitation Districts.

THE FOLLOWING LATEST REVISED STANDARD PLANS ON FILE IN THE OFFICE OF THE COUNTY ENGINEER SHALL APPLY IN CONSTRUCTION OF THIS PROJECT.

LEGEND	5-1
MINIMUM PUBLIC SAFETY REQUIREMENTS	5-2
BRICK MANHOLE	5-3
NON-REINFORCED PRECAST CONCRETE MANHOLE	5-5
REINFORCED PRECAST CONCRETE MANHOLE	5-6
MANHOLE FRAME AND COVER	5-15
STANDARD MANHOLE STEP	5-17
BEDDING FOR SEWER PIPE	5-21
ENCASEMENT	5-23
WYE OR TEE SUPPORT	5-26
ALLOWABLE TRENCH WIDTHS	5-33

NOTE:
 GRADES TO WHICH THIS IMPROVEMENT IS TO BE CONSTRUCTED ARE SHOWN ON PLANS AND PROFILES. GRADE POINTS FOR TOP OF CURBS, CENTER LINE OF STREET, OR CENTER LINE OF ALLEYS ARE SHOWN BY CIRCLES ON PROFILES AT ALL POINTS BETWEEN DESIGNATED POINTS. THE GRADE SHALL BE ESTABLISHED SO AS TO CONFORM TO A STRAIGHT LINE DRAWN BETWEEN SAID DESIGNATED POINTS. ELEVATIONS ARE IN FEET ABOVE U.S.C. & G.S. SEA LEVEL DATUM OF 1929.

WORK SHALL BE CONSTRUCTED ACCORDING TO THE UNIFORM STANDARD SPECIFICATIONS FOR PUBLIC WORKS CONSTRUCTION AND SPECIAL PROVISIONS FOR THE CONSTRUCTION OF SANITARY SEWERS PER PERMITS JAN. 2, 1969 AS REVISED, AND SHALL BE PROSECUTED BY THE PUBLIC WORKS DIVISION OF THE COUNTY ENGINEER.

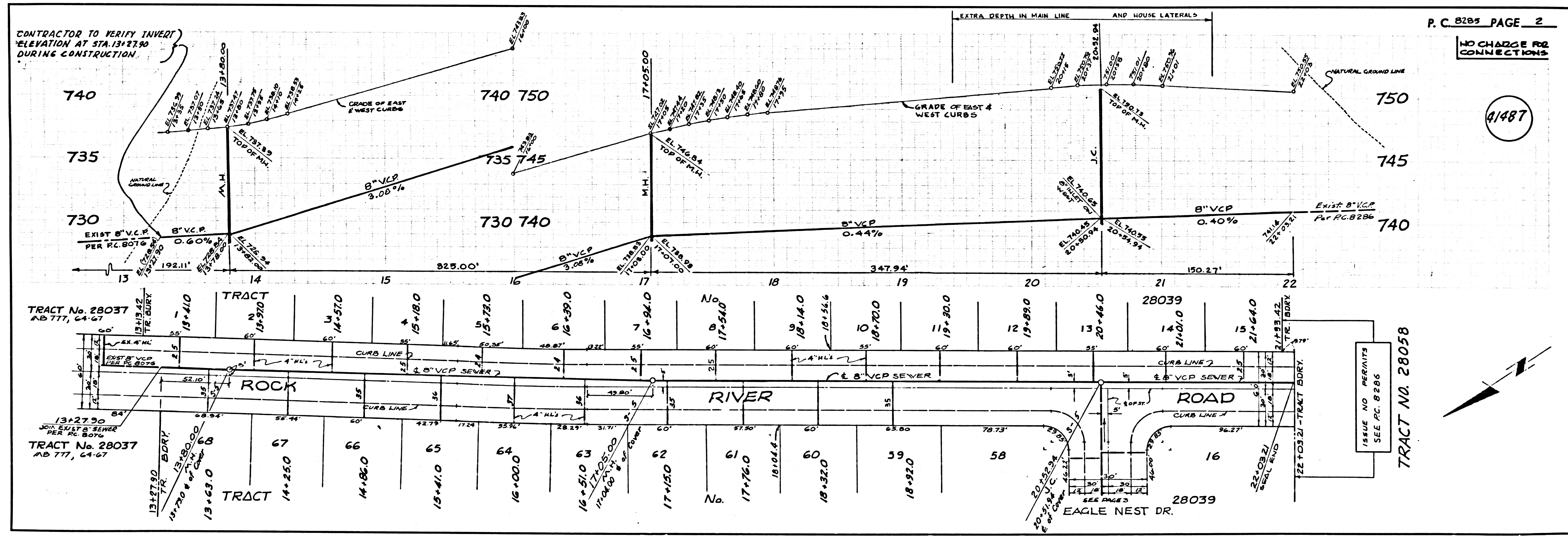
BEFORE WORK CAN BE STARTED, THE CONTRACTOR MUST OBTAIN A PERMIT TO EXCAVATE IN COUNTY STREETS FROM THE L.A. COUNTY ROAD DEPT., DISTRICT OFFICE NO. _____ AND PAY A FEE TO THE COUNTY ENGINEER, ROOM 238 COUNTY ENGINEERING BLDG., 108 WEST SECOND STREET OR 301 E. BROADWAY, SAN DIMAS, CALIFORNIA, SUFFICIENT TO COVER THE COST OF CONSTRUCTION INSPECTION AND RECORD PLANS.

APPROVAL OF THIS PLAN BY THE COUNTY OF LOS ANGELES DOES NOT CONSTITUTE A REPRESENTATION AS TO THE ACCURACY OF THE LOCATION OF OR THE EXISTENCE OR NON-EXISTENCE OF ANY UNDERGROUND UTILITY PIPE OR STRUCTURE WITHIN THE LIMITS OF THIS PROJECT. THIS NOTE APPLIES TO ALL PAGES.

IF WORK IS TO BE DONE IN A STATE HIGHWAY, A PERMIT MUST BE OBTAINED FROM THE STATE OF CALIFORNIA, DIVISION OF HIGHWAY, 120 SOUTH SPRING STREET, LOS ANGELES, CALIFORNIA.

COUNTY OF LOS ANGELES, CALIFORNIA
 JOHN A. LAMBIE, COUNTY ENGINEER J. D. PARKHURST, CHIEF ENGINEER
 CO. 100 DIST. 2
 APPROVED BY: *[Signature]* APPROVED BY: *[Signature]*
 SAN DIMAS REGIONAL ENGINEER OFFICE ENGINEER

CHECKED BY: *Ralph Johnson 9/26/64*
 REG. C.E. NO. 13906



CONTRACTOR TO VERIFY INVERT ELEVATION AT STA. 13+27.30 DURING CONSTRUCTION

P. C. 8285 PAGE 2

NO CHARGE FOR CONNECTIONS

41487

ISSUE NO PERMITS SEE P.C. 8286
 TRACT NO. 28038

