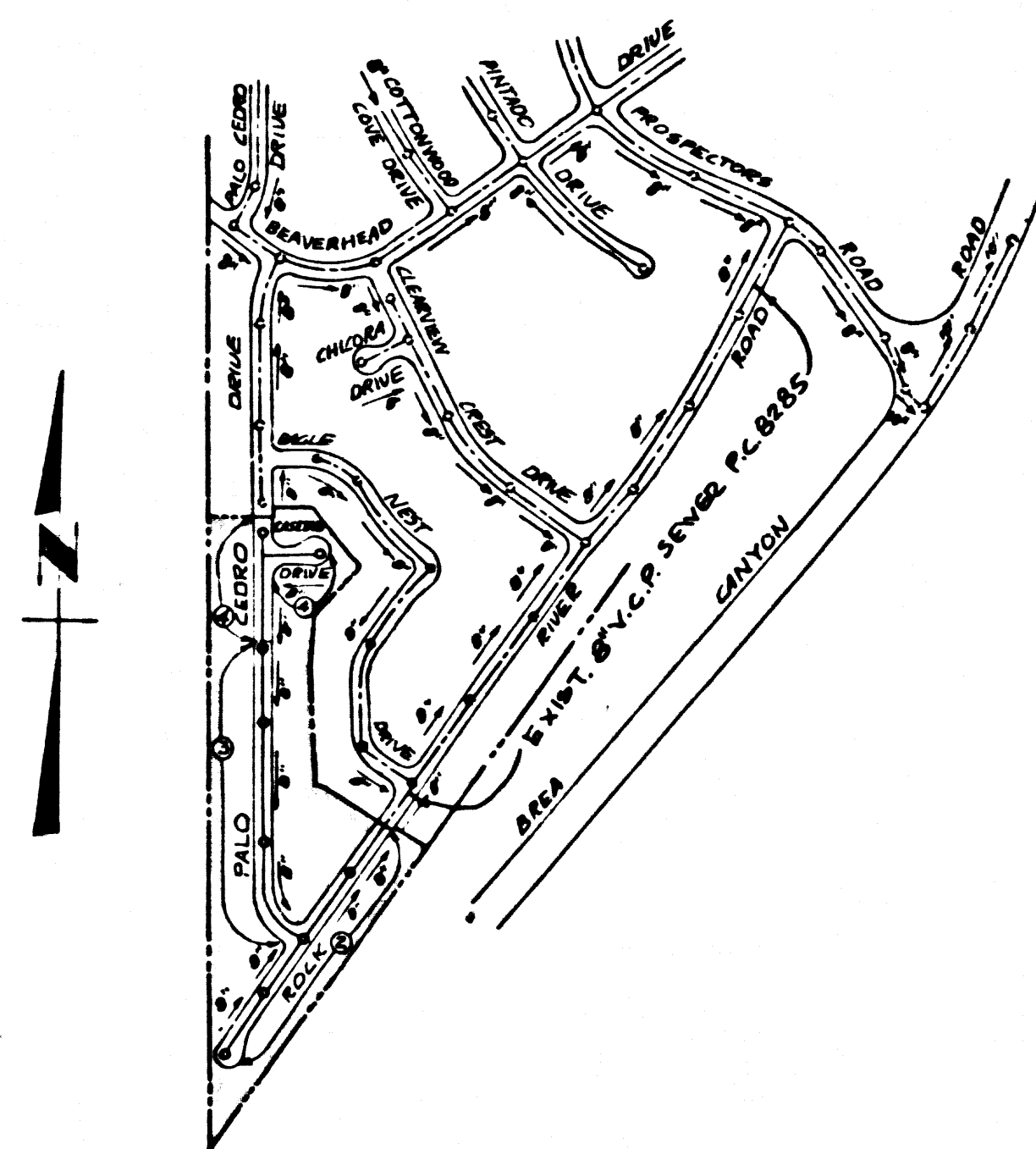


B.M. 56 2061 ELEV. 719.998
 RD. BM. TAG IN CONC. WALK AROUND FOUNTAIN
 6" E. OF W. EDGE ± 76' E.L.Y. ± 161' S.L.Y. ± INT.
 BREA CANYON ROAD & DIAMOND BAR BLVD.
 OTTERBEIN QUAD. 19 55



INDEX MAP
 TR. No. 28058
 P.C. 8286
 SCALE: 1" = 600'

ISSUE NO HOUSE
 CONNECTION PERMITS
 UNTIL PC 8076 & PC 8285 HAVE BEEN ACCEPTED

SAN DIMAS BLDG. DIST. NO. 10

- NOTES:
1. PROVIDE STAKES ON THE PROPERTY LINE OR PROPERTY LINES PRODUCED AT RIGHT ANGLES TO THE SEWER LINE AT THE CENTER LINE OF EACH MANHOLE.
 2. NO REPRESENTATIVE OF THE COUNTY ENGINEER WILL SURVEY OR LAY OUT ANY PORTION OF THE WORK.
 3. THE PRIVATE ENGINEER SHALL FURNISH THE COUNTY ENGINEER WITH GRADE SHEETS AND STATIONING FOR ALL HOUSE LATERALS AND "T" OR "Y" BRANCHES AND SHALL PROVIDE STAKES FOR THEM AT THEIR PROPER LOCATIONS WITH STATIONING PLAINLY MARKED. ALL HOUSE LATERALS SHALL BE CONSTRUCTED IN A STRAIGHT ALIGNMENT AT RIGHT ANGLES FROM THE MAIN LINE SEWER EXCEPT AS SHOWN ON THE PLANS. HOUSE LATERALS FROM CHIMNEYS SHALL NOT HAVE AN ANGLE OF LESS THAN 45° WITH THE MAIN LINE SEWER. ANY CHANGE IN ALIGNMENT SHALL BE REQUESTED IN WRITING BY THE PRIVATE ENGINEER.
 4. THE PRIVATE ENGINEER SHALL FURNISH THE HOUSE LATERAL DEPTH AT THE PROPERTY LINE BELOW THE TOP OF CURB ELEVATION FOR EACH HOUSE LATERAL ON THE GRADE SHEET.
 5. NO REVISIONS SHALL BE MADE IN THESE PLANS WITHOUT THE APPROVAL OF THE COUNTY ENGINEER.
 6. THE CONTRACTOR SHALL NOTIFY THE CONSTRUCTION DIVISION BY TELEPHONE, MARSHON 9-4747, EXT. 8158, AT LEAST TWENTY-FOUR HOURS BEFORE STARTING ANY WORK UNDER THIS CONTRACT.
 7. ALL MANHOLES SHALL BE EITHER BRICK MANHOLES PER 2-3 OR PRECAST CONCRETE MANHOLES PER 2-4 OR 2-4, EXCEPT AS NOTED.
 8. "T" OR "Y" BRANCHES MAY BE USED FOR CONNECTIONS TO MAIN LINES, SEWERS EXCEPT AS NOTED.
 9. MANHOLE TOPS IN UNIMPROVED RIGHTS-OF-WAY TO BE SIX INCHES ABOVE FINISHED GRADE.
 10. USE EXTRA STRENGTH PIPE. ALL PIPE IS STANDARD DEPTH EXCEPT AS NOTED.
 11. VITRIFIED CLAY PIPE JOINTS SHALL BE TYPE "D", "F" OR "G" PER STD. SPEC. SEC. 208-2.
 12. IF A POWER POLE IS WITHIN THREE FEET OF THE SEWER, THE SEWER SHALL BE ENCASED PER 2-23, TWO FEET ON EACH SIDE FROM THE POINT OF INTERFERENCE.
 13. IF DURING THE COURSE OF CONSTRUCTION IT IS DETERMINED THAT THERE IS LESS THAN FOUR FEET OF COVER OVER THE TOP OF A MAIN LINE OR HOUSE LATERAL V.C.P. SEWER WHICH IS NOT INDICATED ON THE PLANS, THE PIPE SHALL BE ENCASED PER 2-23, UNLESS OTHERWISE APPROVED BY THE COUNTY ENGINEER.
 14. HOUSE LATERALS TO BE CONSTRUCTED WITH INVERTS AT PROPERTY LINE & FEET BELOW CURB GRADE EXCEPT AS NOTED.
 15. REPAIRS ALL TRENCHES WITHIN HAZARD AREAS TO MEET L.A. COUNTY ROAD DEPT. OR CALIFORNIA STATE HIGHWAY REQUIREMENTS IN ACCORDANCE WITH PERMITS.
 16. SEWERS TO BE TESTED FOR LEAKAGE PER SECTION 306.2.2.7 OF THE STANDARD SPECIFICATIONS.
 17. REFER TO SECTION 7-10.4.1 OF THE STANDARD SPECIFICATIONS REGARDING SAFETY ORDERS.
 18. ALL JOINTS BETWEEN CAST IRON PIPE AND VITRIFIED CLAY PIPE SHALL BE MADE WITH RUBBER SLEEVE JOINT TYPE "C" OR "D" (WITH BUSHING IF NECESSARY) PER STANDARD SPECIFICATIONS, SECTION 208-2.

County Sanitation Districts shall be notified prior to the following so that required inspection can be made (Phone 897-1025 or 400-9999).

Discharge of the project.

No connections for the disposal of Industrial waste shall be made to sewers shown on these drawings without written permission from the Chief Engineer and General Manager of the County Sanitation Districts.

COLLECT CHARGES AS INDICATED

THE FOLLOWING LATEST REVISED STANDARD PLANS ON FILE IN THE OFFICE OF THE COUNTY ENGINEER SHALL APPLY IN CONSTRUCTION OF THIS PROJECT.

LEGEND	5-1
MINIMUM PUBLIC SAFETY REQUIREMENTS	5-2
BRICK MANHOLE	5-3
NON-REINFORCED PRECAST CONCRETE MANHOLE	5-5
REINFORCED PRECAST CONCRETE MANHOLE	5-6
MANHOLE FRAME AND COVER	5-15
STANDARD MANHOLE STEP	5-17
BEDDING FOR SEWER PIPE	5-21
CRADLING AND BUCKREMENT	5-23
WYE OR TEE SUPPORT	5-26
ALLOWABLE TRENCH WIDTHS	5-30

PROFILE ALIGNMENT AND GRADE OF
 SANITARY SEWERS
 CONSTRUCTED IN

P.C. 8286
 PAGE 1

TRACT No. 28058

PRIVATE CONTRACT NO. 8286

W.S. 39C-2

2 SHEETS; 4 PAGES

SCALE: VERT. 1" = 4' APRIL, 1969

HORIZ. 1" = 40'

PREPARED IN THE OFFICES OF

KEMMERER ENGR. CO. INC.

6705 SOUTH PAINTER AVE., WHITTIER, CALIF.

By: Robert K. Flaws

REG. C. E. NO. 11349

41491

NOTES:
 GRADES TO WHICH THIS IMPROVEMENT IS TO BE CONSTRUCTED ARE SHOWN ON PLANS AND PROFILES. GRADE POINTS FOR TOP OF CURBS, CENTER LINE OF STREETS, OR CENTER LINE OF ALLEYS ARE SHOWN BY CIRCLES ON PROFILES. AT ALL POINTS BETWEEN DESIGNATED POINTS THE GRADE SHALL BE ESTABLISHED SO AS TO CONFORM TO A STRAIGHT LINE DRAWN BETWEEN SAID DESIGNATED POINTS. ELEVATIONS ARE IN FEET ABOVE U.S.C. & G.S. SEA LEVEL DATUM OF 1929.

WORK SHALL BE CONSTRUCTED ACCORDING TO THE UNIFORM STANDARD SPECIFICATIONS FOR PUBLIC WORKS CONSTRUCTION AND SPECIAL PROVISIONS FOR CONSTRUCTION OF SEWER LATERALS AND MAINS. THE CONTRACTOR MUST OBTAIN A PERMIT TO EXCAVATE IN PUBLIC STREETS FROM THE L.A. COUNTY ROAD DEPT., DISTRICT OFFICE NO. 21, 121 E. BOWLING GREEN, SAN DIMAS, REGIONAL OFFICE, SUFFICIENT TO COVER THE COST OF CONSTRUCTION INSPECTION AND RECORD PLANS.

APPROVAL OF THIS PLAN BY THE COUNTY OF LOS ANGELES DOES NOT CONSTITUTE A REPRESENTATION AS TO THE ACCURACY OF THE LOCATION OF OR THE EXISTENCE OR NON-EXISTENCE OF ANY UNDERGROUND UTILITY PIPE, OR STRUCTURE WITHIN THE LIMITS OF THIS PROJECT. THIS NOTE APPLIES TO ALL PAGES.

IF WORK IS TO BE DONE IN A STATE HIGHWAY, A PERMIT MUST BE OBTAINED FROM THE STATE OF CALIFORNIA, DIVISION OF HIGHWAYS, 120 SOUTH SPRING STREET, LOS ANGELES, CALIFORNIA.

COUNTY OF LOS ANGELES, CALIFORNIA

JOHN A. LAMBE, COUNTY ENGINEER

J. D. PARKHURST, CHIEF ENGINEER

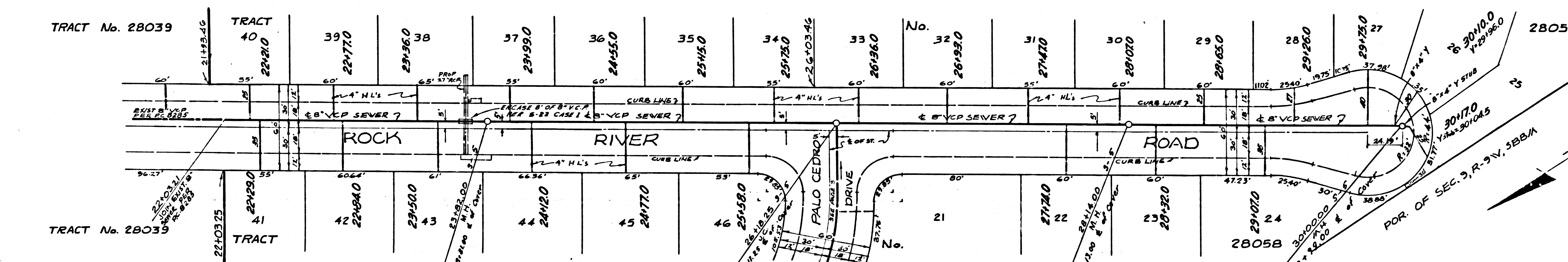
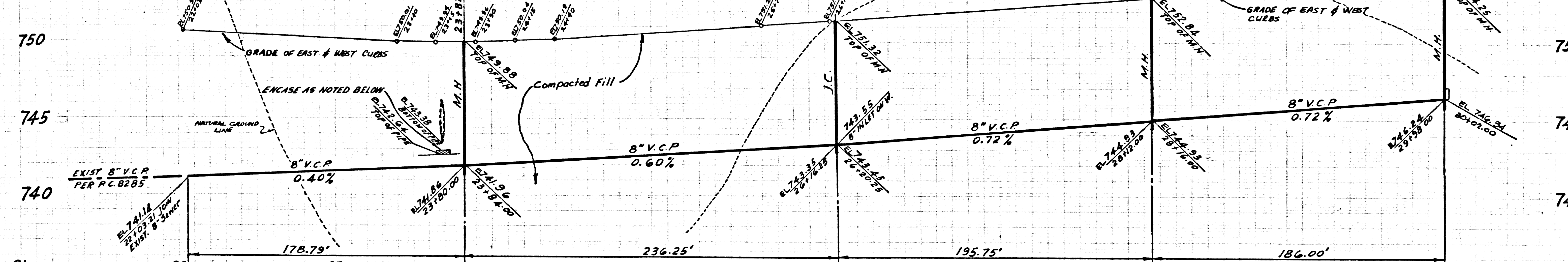
APPROVED BY: R.F. Keeling

APPROVED BY: [Signature]

CHECKED BY: Ralph Johnson 9/26/69

REG. C. E. NO. 13406

CONTRACTOR TO VERIFY INVERT ELEVATION AT STATION 22+03.21 DURING CONSTRUCTION



P. C. 8286 PAGE 2

NO CHARGE FOR CONNECTIONS

41492

