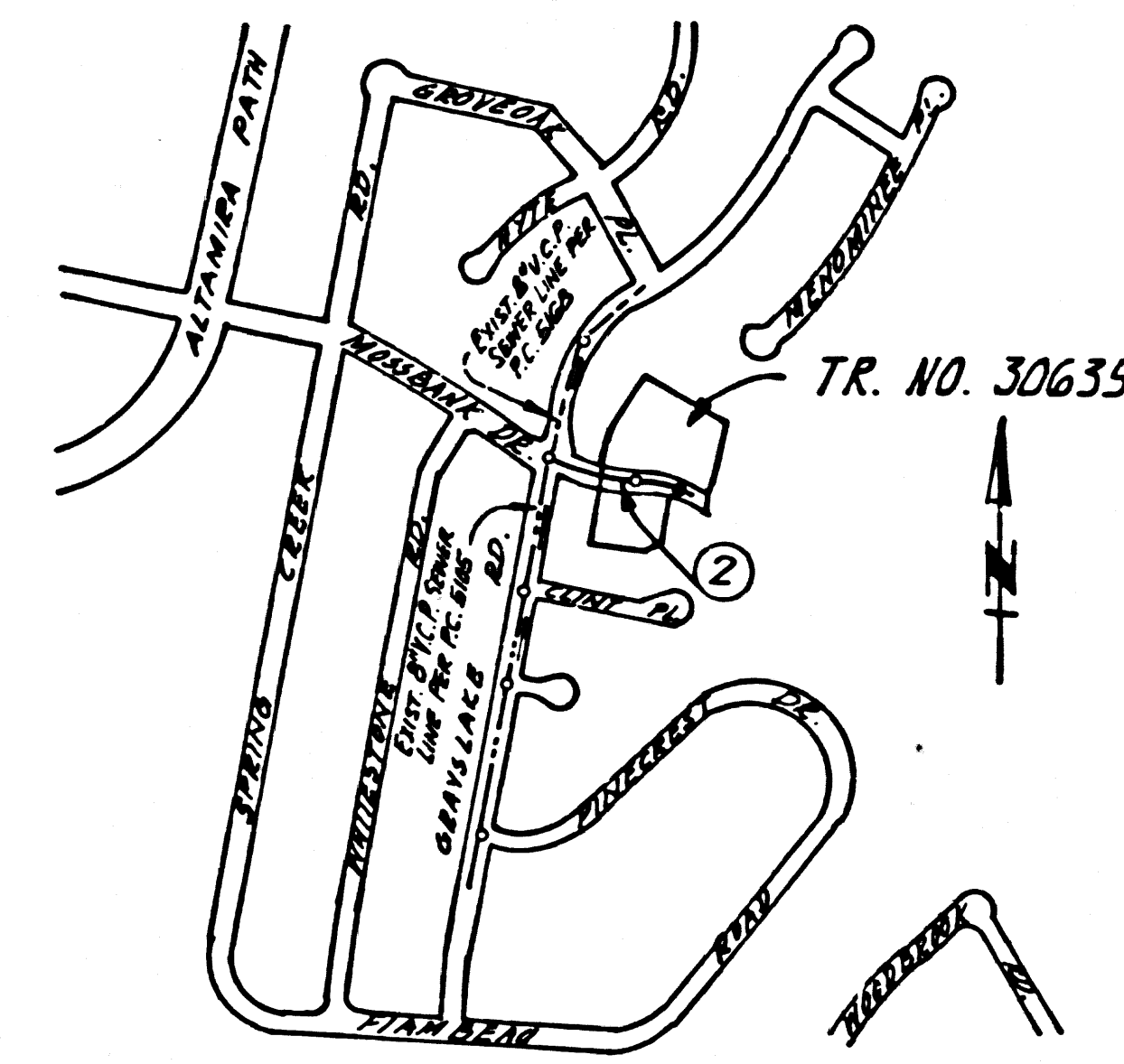


B.M. BY 4373 ELEV. 1091.610
 ELEV. USED 1090.540
 (L.A. CO. ROAD DEPT. B.M.) L. & SPK. IN TYPE B ISLAND TRANSITION CB.
 41 FT. ± N. CENTERLINE HANTHORNE BLVD. 49 FT. ± E. GRAYSLAKE ROAD.
 PALOS VERDES QUAD. 19 65



INDEX MAP
 SCALE 1" = 600'
 P.C. 8287

The following latest Revised Std. Plans
 on file in the Office of the County Eng.
 shall apply in the construction of this
 project:

Leg and	5-1
M.H. Public Safety Requirements	5-2
Brick Manhole	5-3
Man-Encased Concrete Manhole	5-5
Reinforced Precast Concrete Manhole	5-6
Manhole Frame & Cover	5-35
Manhole Step	5-37
Sealing for Sewer Pipe	5-31
Crawling & Encasement	5-23
W/P or S Support	5-26
Allowable Trench Widths	5-33

LOMITA BLDG. DIST. NO. 12

- NOTES:
- PROVIDE STAKES ON THE PROPERTY LINE OR PROPERTY LINES PRODUCED AT RIGHT ANGLES TO THE SEWER LINE AT THE CENTER LINE OF EACH MANHOLE.
 - NO REPRESENTATIVE OF THE COUNTY ENGINEER WILL SURVEY OR LAY OUT ANY PORTION OF THE WORK.
 - THE PRIVATE ENGINEER SHALL FURNISH THE COUNTY ENGINEER WITH GRADE SHEETS AND STATIONING FOR ALL HOUSE LATERALS AND 7 1/2" BRANCHES AND SHALL PROVIDE STAKES FOR THEM AT THEIR PROPER LOCATIONS WITH STATIONING PLAINLY MARKED. ALL HOUSE LATERALS SHALL BE CONSTRUCTED IN A STRAIGHT ALIGNMENT AT RIGHT ANGLES FROM THE MAIN LINE SEWER EXCEPT AS SHOWN ON THE PLANS. HOUSE LATERALS FROM CHIMNEYS SHALL NOT HAVE AN ANGLE OF LESS THAN 45° WITH THE MAIN LINE SEWER. ANY CHANGE IN ALIGNMENT SHALL BE REQUESTED IN WRITING BY THE PRIVATE ENGINEER.
 - THE PRIVATE ENGINEER SHALL FURNISH THE HOUSE LATERAL DEPTH AT THE PROPERTY LINE BELOW THE TOP OF CURB ELEVATION FOR EACH HOUSE LATERAL ON THE GRADE SHEET.
 - NO REVISIONS SHALL BE MADE IN THESE PLANS WITHOUT THE APPROVAL OF THE COUNTY ENGINEER.
 - THE CONTRACTOR SHALL NOTIFY THE CONSTRUCTION DIVISION BY TELEPHONE, HANDBOOK 9-22, EXT. 8188, AT LEAST TWENTY-FOUR HOURS BEFORE STARTING ANY WORK UNDER THIS CONTRACT.
 - ALL STRUCTURES SHALL BE BUILT BRICK MANHOLES PER 5-3 OR PRECAST CONC. MANHOLES PER 5-5 OR 5-6 EXCEPT AS NOTED.
 - 7 1/2" BRANCHES MAY BE USED FOR CONNECTIONS TO MAINLINE SEWER EXCEPT AS NOTED.
 - MANHOLE TOPS IN UNIMPROVED RIGHTS-OF-WAY TO BE SIX INCHES ABOVE FINISHED GRADE.
 - USE EXTRA STRENGTH PIPE. ALL PIPE IS STANDARD DEPTH EXCEPT AS NOTED.
 - WRAPPED CEMENT PIPE JOINTS SHALL BE TYPE "D", 7" OR 8" PER STD. SPECS. SEC. 208-2.
 - IF A COVER POLE IS WITHIN THREE FEET OF THE SEWER, THE SEWER SHALL BE ENCASED, PER 5-23, TWO FEET ON EACH SIDE FROM THE POINT OF INTERFERENCE.
 - IF DURING THE COURSE OF CONSTRUCTION IT IS DETERMINED THAT THERE IS LESS THAN FOUR FEET OF COVER OVER THE TOP OF A MAIN LINE OR HOUSE LATERAL V.C.P. SEWER WHICH IS NOT INDICATED ON THE PLANS, THE PIPE SHALL BE ENCASED PER 5-23, UNLESS OTHERWISE APPROVED BY THE COUNTY ENGINEER.
 - HOUSE LATERALS TO BE CONSTRUCTED WITH INVERTS AT PROPERTY LINE 4 FEET BELOW CURB GRADE EXCEPT AS NOTED.
 - RESURFACE ALL TRENCHES WITHIN PAVED AREAS TO MEET L.A. COUNTY ROAD DEPT. OR CALIFORNIA STATE HIGHWAY REQUIREMENTS IN ACCORDANCE WITH PERMITS.
 - SEWERS TO BE KEPT OPEN FOR LEAKAGE PER SEC. 306-2.3.7 OF THE STD. SPECS.
 - REFER TO SEC. 7-10, 4.10, AND 5.10, THE STD. SPECS. REGARDING SAFETY COVERS.
 - ALL JOINTS BETWEEN CAST IRON PIPE AND RIVETED CHINA PIPE SHALL BE MADE WITH A RUBBER SLEEVE JOINT TYPE "C" OR "D" PER STD. SPECS. SEC. 208-2.

No connections for the disposal of industrial wastes shall be made to sewers shown on these drawings without written permission from the Chief Engineer and General Manager of the County Sanitation Districts.

County Sanitation Districts shall be notified prior to the following so that required inspection can be made (Phone 497-3000 or 626-9097)

COLLECT CHARGES AS INDICATED

Acceptance of the project.

PROFILE, ALIGNMENT AND GRADE OF P.C. 8287
 SANITARY SEWERS PAGE 1
 TO BE CONSTRUCTED IN
 TRACT NO. 30635

PRIVATE CONTRACT NO. 8287

W.S. 27
 1 SHEET, 2 PAGES
 SCALE: VERT. 1" = 4'
 HORIZ. 1" = 40'
 FEBRUARY, 1969

PREPARED IN THE OFFICES OF
 JENNINGS-SCOTT ENGINEERING CO.

BY: [Signature]
 REG. C. E. NO. 14256

FOR LEGEND SEE PLAN NO. S-1

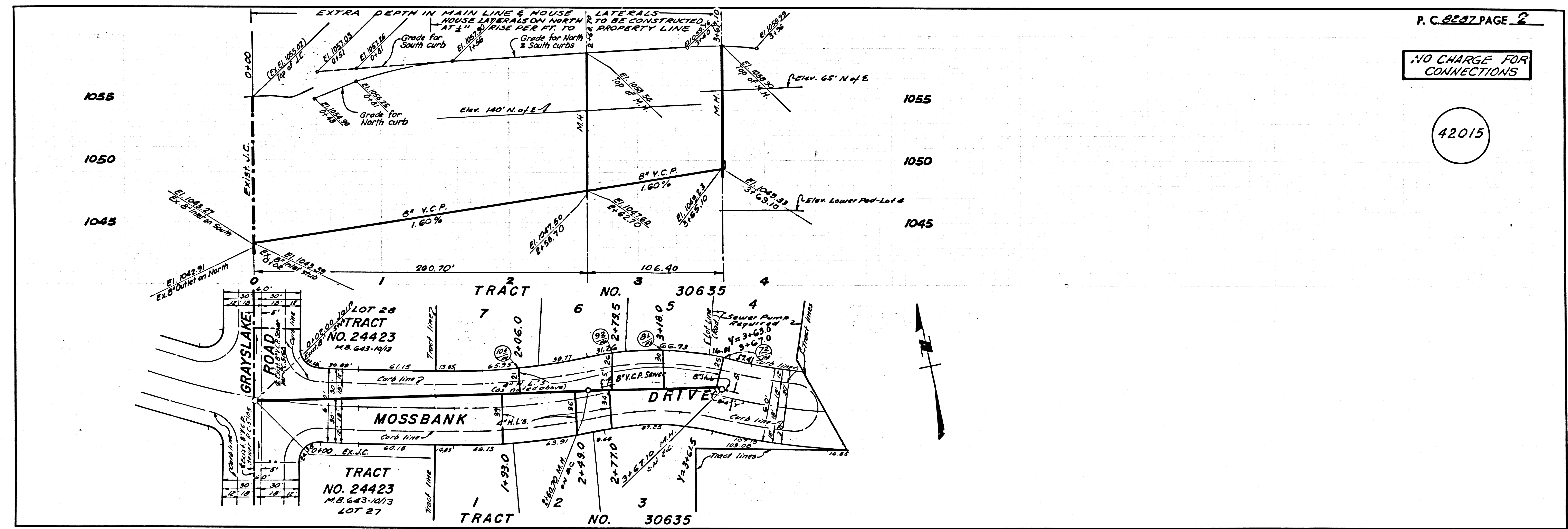
NOTE:
 GRADES TO WHICH THE IMPROVEMENT IS TO BE CONSTRUCTED ARE SHOWN ON PLANS AND PROFILE. GRADE POINTS FOR TOP OF CURB, CENTER LINE OF STREETS, OR CENTER LINE OF ALLEYS ARE SHOWN BY CIRCLES ON PROFILES. AT ALL POINTS BETWEEN DESIGNATED POINTS THE GRADE SHALL BE ESTABLISHED SO AS TO CONFORM TO A STRAIGHT LINE DRAWN BETWEEN SAID DESIGNATED POINTS. ELEVATIONS ARE IN FEET ABOVE U.S.C. & G.S. MEAN SEA LEVEL DATUM OF 1929.
 THE DRAWING AND THE DATA HEREON ARE HEREBY MADE A PART OF THE SPECIFICATIONS.
 WORK SHALL BE CONSTRUCTED ACCORDING TO STANDARD SPECIFICATIONS FOR PUBLIC UTILITIES SUBMITTED FROM THE COUNTY ENGINEER TO THE BOARD OF SUPERVISORS FOR THE CONSTRUCTION OF SANITARY SEWERS, 1958, AS AMENDED BY THE BOARD OF SUPERVISORS OF THE COUNTY OF LOS ANGELES, 1967, AND BY THE COUNTY ENGINEER, ROOM 300, COUNTY ENGINEERING BUILDING, 300 WEST SECOND STREET, LOS ANGELES, CALIFORNIA. CONTRACTORS SHALL BE RESPONSIBLE FOR OBTAINING THE NECESSARY PERMITS TO COVER THE COST OF CONSTRUCTION INSPECTION AND RECORD PLANS.
 APPROVAL OF THIS PLAN BY THE COUNTY OF LOS ANGELES DOES NOT CONSTITUTE A REPRESENTATION AS TO THE ACCURACY OF THE LOCATION OF OR THE EXISTENCE OF ANY UNDERGROUND UTILITY PIPE, OR STRUCTURE WITHIN THE LIMITS OF THE PROJECT. THIS NOTE APPLIES TO ALL PAGES.
 IF WORK IS TO BE DONE IN A STATE HIGHWAY, A PERMIT MUST BE OBTAINED FROM THE STATE OF CALIFORNIA, DIVISION OF HIGHWAYS, 120 SOUTH SPRING STREET, LOS ANGELES, CALIFORNIA.

COUNTY OF LOS ANGELES, CALIFORNIA
 JOHN A. LAMBIE, COUNTY ENGINEER J. D. PARKHURST, CHIEF ENGINEER
 CO. ENG. DIST. NO. 12
 APPROVED BY: [Signature] REGIONAL ENGINEER APPROVED BY: [Signature] OFFICE ENGINEER

CHECKED BY: [Signature] 2/1/69
 REG. C.E. NO. 10,663

42014

J.N. 0250.02



P.C. 8287 PAGE 2

NO CHARGE FOR CONNECTIONS

42015

TR 30635