

B.M. BL 2888 ELEV. 1530.654  
 PD. BM. T.M. S.E. FOR SIERRA HWY &  
 FRIENDLY VALLEY PRWK. EOFF. S. &  
 79 FT. CL. INT.  
 NEWHALL QUAD. 19 65

DOUBLE SCALE  
 NEWHALL BLDG. DIST. NO. 8.2

PROFILE, ALIGNMENT AND GRADE OF  
 SANITARY SEWERS PAGE 1  
 CONSTRUCTED IN

TRACT NO. 30701  
 PRIVATE CONTRACT NO. 8288  
 253 S 141  
 W.S. 62

3 SHEETS; 6 PAGES  
 SCALE: VERT. 1"=4'  
 HORIZ. 1"=40'  
 APRIL 1969  
 PREPARED IN THE OFFICES OF  
 MCINTIRE & QUIROS INC.  
 670 MONTEREY PASS ROAD, MONTEREY PARK, CALIF.  
 By: *Ronald L. Hoag*  
 REG. C. E. NO. 173887

- NOTES: (CONT.)
- SPECIAL BACKFILL IN DESIGNATED AREAS
  - (A) BACKFILL TRENCH AND REPLACE OTHER EARTH REMOVED SO AS TO REPRODUCE THE NATURAL OR FINISHED GRADES AND SLOPES SHOWN ON THE ORIGINAL PLAN APPROVED FOR THIS TRACT BY THE BUILDING AND SAFETY DIVISION.
  - (B) ALL BACKFILL AND EARTH REPLACED SHALL BE COMPACTED TO A MINIMUM OF 90% OF MAXIMUM DENSITY PER ASTM STANDARD METHOD, OR TEST D 698-57T AS MODIFIED. ACCEPTABLE CERTIFICATION OF SUCH COMPACTION SHALL BE SUBMITTED TO THE CONSTRUCTION DIVISION.

County Sanitation Districts shall be notified prior to the following so that required inspection can be made (Phone 897-1088 x-660-9097)

Acceptance of the project.

No connections for the disposal of industrial wastes shall be made to sewers shown on these drawings without written permission from the Chief Engineer and General Manager of the County Sanitation Districts.

- NOTE:
- HOUSE LATERALS TO BE CONSTRUCTED WITH INVERTS AT PROPERTY LINE & FEET BELOW CURB GRADE EXCEPT AS NOTED.
  - PROVIDE STAKES ON THE PROPERTY LINE OR PROPERTY LINES PRODUCED AT RIGHT ANGLES TO THE SEWER LINE AT THE CENTER LINE OF EACH MANHOLE.
  - NO REPRESENTATIVE OF THE COUNTY ENGINEER WILL SURVEY OR LAY OUT ANY PORTION OF THE WORK.
  - THE PRIVATE ENGINEER SHALL FURNISH THE COUNTY ENGINEER WITH GRADE SHEETS AND STATIONING FOR ALL HOUSE LATERALS AND "T" BRANCHES AND SHALL PROVIDE STAKES FOR THESE AT THEIR PROPER LOCATIONS WITH STATIONING PLAINLY MARKED. ALL HOUSE LATERALS SHALL BE CONSTRUCTED IN A STRAIGHT ALIGNMENT AT RIGHT ANGLES FROM THE MAIN LINE SEWER EXCEPT AS SHOWN ON THE PLANS. HOUSE LATERALS FROM CHIMNEYS SHALL NOT HAVE AN ANGLE OF LESS THAN 45° WITH THE MAIN LINE SEWER. ANY CHANGE IN ALIGNMENT SHALL BE REQUESTED IN WRITING BY THE PRIVATE ENGINEER.
  - THE PRIVATE ENGINEER SHALL FURNISH THE HOUSE LATERAL DEPTH AT THE PROPERTY LINE BELOW THE TOP OF CURB ELEVATION FOR EACH HOUSE LATERAL ON THE GRADE SHEET.
  - NO REVISIONS SHALL BE MADE IN THESE PLANS WITHOUT THE APPROVAL OF THE COUNTY ENGINEER.
  - THE CONTRACTOR SHALL NOTIFY THE CONSTRUCTION DIVISION BY TELEPHONE, HARBOR 8-4747, EXT. 87131, AT LEAST TWENTY-FOUR HOURS BEFORE STARTING ANY WORK UNDER THIS CONTRACT.
  - ALL STRUCTURES SHALL BE EITHER BRICK MANHOLES PER S-3 OR PRECAST CONCRETE MANHOLES PER S-4 OR S-4, EXCEPT AS NOTED.
  - "T" BRANCHES MUST BE USED FOR CONNECTIONS TO MAINLINE SEWERS.
  - MANHOLE TOPS IN UNIMPROVED RIGHTS OF WAY TO BE SIX INCHES ABOVE FINISHED GRADE.
  - USE EXTRA STRENGTH PIPE. ALL PIPE IS STANDARD DEPTH EXCEPT AS NOTED.
  - VITRIFIED CLAY PIPE JOINTS SHALL BE THE "T", "C" OR "P" PER STANDARD SPECIFICATIONS SECTION 308-2.
  - IF A POWER POLE IS WITHIN THREE FEET OF THE SEWER, THE SEWER SHALL BE ENCASED, PER S-25, TWO FEET ON EACH SIDE FROM THE POINT OF INTERFERENCE.
  - IF DURING THE COURSE OF CONSTRUCTION IT IS DETERMINED THAT THERE IS LESS THAN FOUR FEET OF COVER OVER THE TOP OF A MAIN LINE OR HOUSE LATERAL V.C.P. WHICH IS NOT INDICATED ON THE PLANS, THE PIPE SHALL BE ENCASED PER S-25, UNLESS OTHERWISE APPROVED BY THE COUNTY ENGINEER.
  - RESURFACE ALL TRENCHES WITHIN PAVED AREAS TO MEET L.A. COUNTY ROAD DEPT. OR CALIFORNIA STATE HIGHWAY REQUIREMENTS IN ACCORDANCE WITH PERMITS.
  - SEWERS TO BE TESTED FOR LEAKAGE PER SECTION 308-3.3.3 OF THE STANDARD SPECIFICATIONS.
  - REFER TO SECTION 318-4.1 OF THE STANDARD SPECIFICATIONS, REGARDING SAFETY CORDING.
  - ALL JOINTS BETWEEN CAST IRON PIPE AND VITRIFIED CLAY PIPE SHALL BE MADE WITH A RUBBER SLEEVE JOINT, TYPE "C" OR "P", WITH GUSHING IF NECESSARY PER STANDARD SPECIFICATIONS, SECTION 308-2.
- THE FOLLOWING LATEST REVISED STANDARD PLANS ON FILE IN THE OFFICE OF THE COUNTY ENGINEER SHALL APPLY IN THE CONSTRUCTION OF THIS PROJECT:

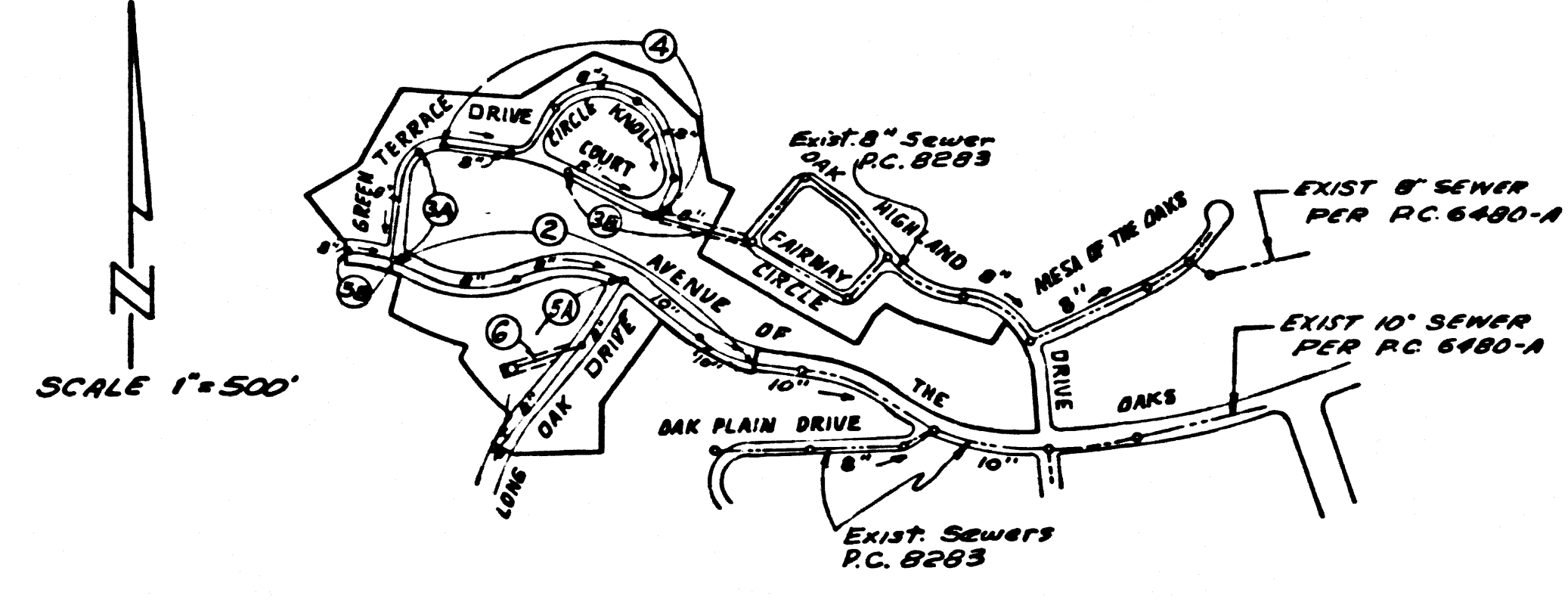
LEGEND	S-1
MINIMUM PUBLIC LAYOUT REQUIREMENTS	S-2
BRICK MANHOLE	S-3
NON-REINFORCED PRECAST CONCRETE MANHOLE	S-4
REINFORCED PRECAST CONCRETE MANHOLE	S-5
MANHOLE FRAME AND COVER	S-6
STANDARD MANHOLE STEP	S-7
BEDDING FOR SEWER PIPE	S-8
ENCASING AND ENCASING	S-9
WYE OR TE SUPPORT	S-10
ALLOWABLE TRENCH WIDTH	S-11
SPECIAL HOUSE LATERALS	S-12

LOT 89 IS FOR RECREATION (GOLF COURSE) AND DRAINAGE PURPOSES - NOT SERVED

ALL STREETS AND ALLEYS IN THIS TRACT ARE PRIVATE, THEY ARE SANITARY SEWER RIGHTS-OF-WAY.

COLLECT CHARGES AS INDICATED

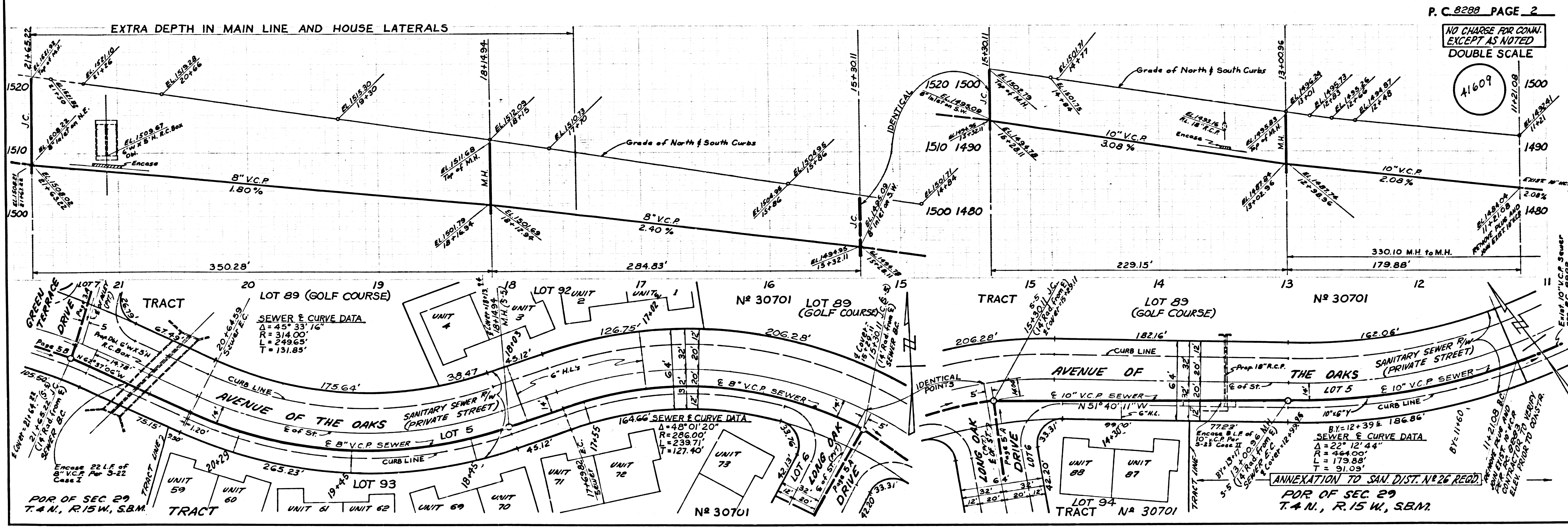
ISSUE NO HOUSE CONNECTION PERMITS UNTIL P.C. 8288 IS ACCEPTED BY THE COUNTY OF LOS ANGELES.



INDEX MAP  
 TRACT NO. 30701  
 P.C. 8288

NOTE: NUMBERS IN CIRCLES INDICATE REVISION NUMBERS.

REVISION:  
 M.M. AT STA. 6+10.42 PAGE 3B CHANGED FROM S-3 TO S-5  
 APPROVED *Ronald L. Hoag* 4-15-70  
 OFFICE OF COUNTY ENGINEER  
 REG. C.E. 14930



P. C. 8288 PAGE 2  
 NO CHARGE FOR CONN. EXCEPT AS NOTED  
 DOUBLE SCALE  
 41609

