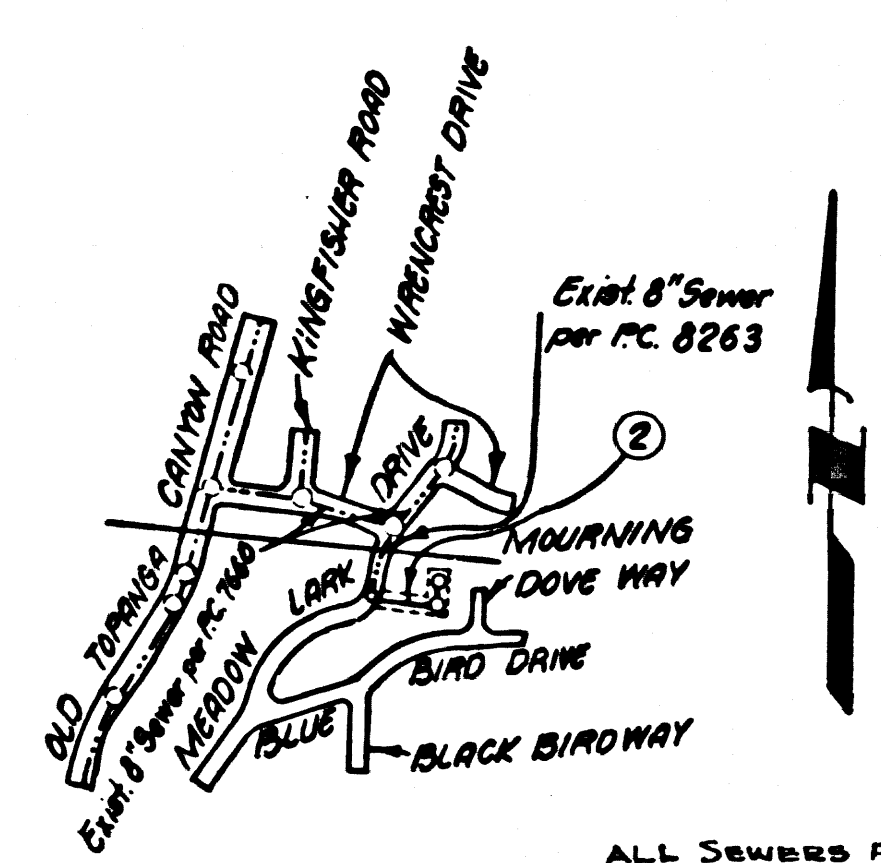


B.M. BY 5333 ELEV. 1042.493
 RD ON TAG CTR HDWL OVER DRAIN PIPE
 OF CULV 15 FT. E. APPROX. & INT OLD
 TOPANGA CANYON RD AND MULHOLLAND
 HWY. 2 FT. E. POST (108+36)
 MALIBU QUAD. 19 65

THE FOLLOWING LATEST REVISED STANDARD PLANS ON FILE IN THE OFFICE OF THE COUNTY ENGINEER SHALL APPLY IN THE CONSTRUCTION OF THIS PROJECT.

| | |
|--|------|
| LEGEND | 5-1 |
| MIN. PUBLIC SAFETY REGULATIONS | 5-2 |
| BRICK MANHOLE | 5-3 |
| NON REINFORCED PRECAST CONCRETE MANHOLES | 5-5 |
| REINFORCED PRECAST CONCRETE MANHOLE | 5-6 |
| MANHOLE FRAME AND COVER | 5-15 |
| MANHOLE STEP | 5-17 |
| BEDDING FOR SEWER PIPE | 5-21 |
| CRADLING AND ENCASEMENT | 5-23 |
| WYE OR TEE SUPPORT | 5-26 |
| ALLOWABLE TRENCH WIDTHS | 5-33 |



KEY MAP
 P.C. 8289
 SCALE: 1" = 500'

DOUBLE SCALE
 CALABASAS BLDG. DIST. NO. 91

PROFILE, ALIGNMENT AND GRADE OF P.C. 8289
 SANITARY SEWERS PAGE 1
 TO BE CONSTRUCTED IN
 EASEMENT EAST OF MEADOW LARK DRIVE

PRIVATE CONTRACT NO. 8289

W.S. 60
 1 SHEETS, 2 PAGES
 SCALE: VERT. 1" = 4' HORIZ. 1" = 40'
 MARCH, 1969
 PREPARED IN THE OFFICES OF
 Sikand Engineering Associates
 2891 S. Colorado Blvd., Pasadena, California 91107
 By John R. Peas
 REG. C. E. NO. 2872
 FOR LEGEND SEE PLAN NO. 5-1

41498

- NOTES:
1. PROVIDE STAKES ON THE PROPERTY LINE OR PROPERTY LINES PRODUCED AT RIGHT ANGLES TO THE SEWER LINE AT THE CENTER LINE OF EACH MANHOLE.
 2. NO REPRESENTATIVE OF THE COUNTY ENGINEER WILL SURVEY OR LAY OUT ANY PORTION OF THE WORK.
 3. THE PRIVATE ENGINEER SHALL FURNISH THE COUNTY ENGINEER WITH GRADE SHEETS AND STATIONING FOR ALL HOUSE LATERALS "Y" OR "T" BRANCHES AND SHALL PROVIDE STAKES FOR THEM AT THEIR PROPER LOCATIONS WITH STATIONING PLAINLY MARKED. ALL HOUSE LATERALS SHALL BE CONSTRUCTED IN A STRAIGHT ALIGNMENT AT RIGHT ANGLES FROM THE MAIN LINE SEWER EXCEPT AS SHOWN ON THE PLANS. HOUSE LATERALS FROM CHIMNEYS SHALL NOT HAVE AN ANGLE OF LESS THAN 45° WITH THE MAIN LINE SEWER. ANY CHANGE IN ALIGNMENT SHALL BE REQUESTED IN WRITING BY THE PRIVATE ENGINEER.
 4. THE PRIVATE ENGINEER SHALL FURNISH THE HOUSE LATERAL DEPTH AT THE PROPERTY LINE BELOW THE TOP OF CURB ELEVATION FOR EACH HOUSE LATERAL ON THE GRADE SHEET.
 5. NO REVISIONS SHALL BE MADE IN THESE PLANS WITHOUT THE APPROVAL OF THE COUNTY ENGINEER.
 6. THE CONTRACTOR SHALL NOTIFY THE CONSTRUCTION DIVISION BY TELEPHONE, MADISON 9-6700, EXT. 81581, AT LEAST TWENTY-FOUR HOURS BEFORE STARTING ANY WORK UNDER THIS CONTRACT.
 7. ALL STRUCTURES SHALL BE BRICK MANHOLES PER 5-3.
 8. "Y" OR "T" BRANCHES MAY BE USED FOR CONNECTIONS TO MAIN LINE SEWERS EXCEPT AS NOTED.
 9. SEWERS TO BE TESTED BY AIR PRESSURE METHOD PER SEC. 306-2.3, 7, C OF THE STANDARD SPEC'S.
 10. USE EXTRA STRENGTH PIPE, ALL PIPE IS STANDARD DEPTH EXCEPT AS NOTED.
 11. USE MECHANICAL COMPRESSION JOINTS FOR ALL V.C.P. JOINTS PER SPEC'S, SECT. 3A, 8 & 9.
 12. VITRIFIED CLAY PIPE JOINTS SHALL BE TYPE "D", "F" OR "G" PER STD. SPEC'S SEC. 208-2.
 13. IF DURING THE COURSE OF CONSTRUCTION IT IS DETERMINED THAT THERE IS LESS THAN FOUR FEET OF COVER OVER THE TOP OF A MAIN LINE OR HOUSE LATERAL V.C.P. SEWER WHICH IS NOT INDICATED ON THE PLANS, THE PIPE SHALL BE ENCASED PER 5-23, UNLESS OTHERWISE APPROVED BY THE COUNTY ENGINEER.
 14. HOUSE LATERALS TO BE CONSTRUCTED WITH INVERTS AT PROPERTY LINE & FEET BELOW CURB GRADE EXCEPT AS NOTED.
 15. RESURFACE ALL TRENCHES WITHIN PAVED AREAS TO MEET L.A. COUNTY ROAD DEPT. OR CALIFORNIA STATE HIGHWAY REQUIREMENTS IN ACCORDANCE WITH PERMITS.
 16. IF A POWER POLE IS WITHIN THREE FEET OF THE SEWER, THE SEWER SHALL BE ENCASED, PER 5-23, TWO FEET ON EITHER SIDE FROM THE POINT OF INTERFERENCE.
 17. REFER TO SEC. 710.4.1 OF THE STD. SPEC'S REGARDING SAFETY ORDERS.
 18. AVAILABLE TOPS IN UNIMPROVED RIGHTS-OF-WAY TO BE SIX INCHES ABOVE FINISHED GRADE.

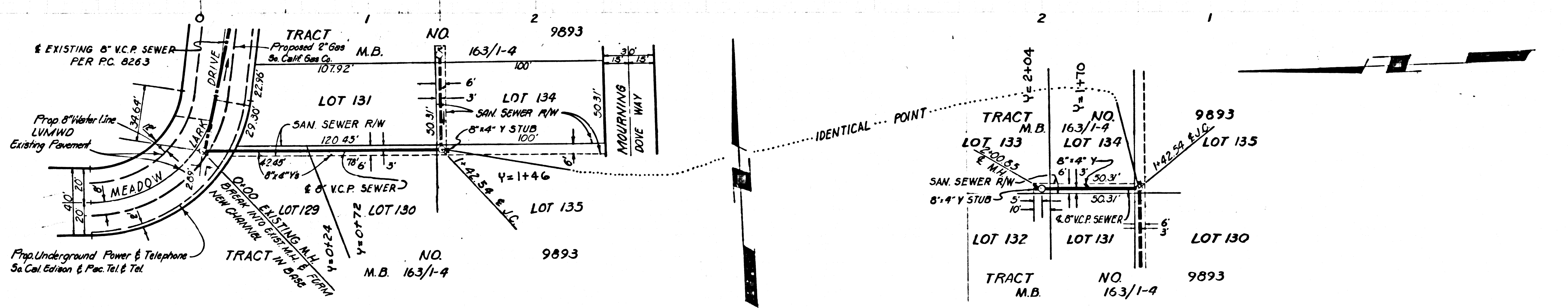
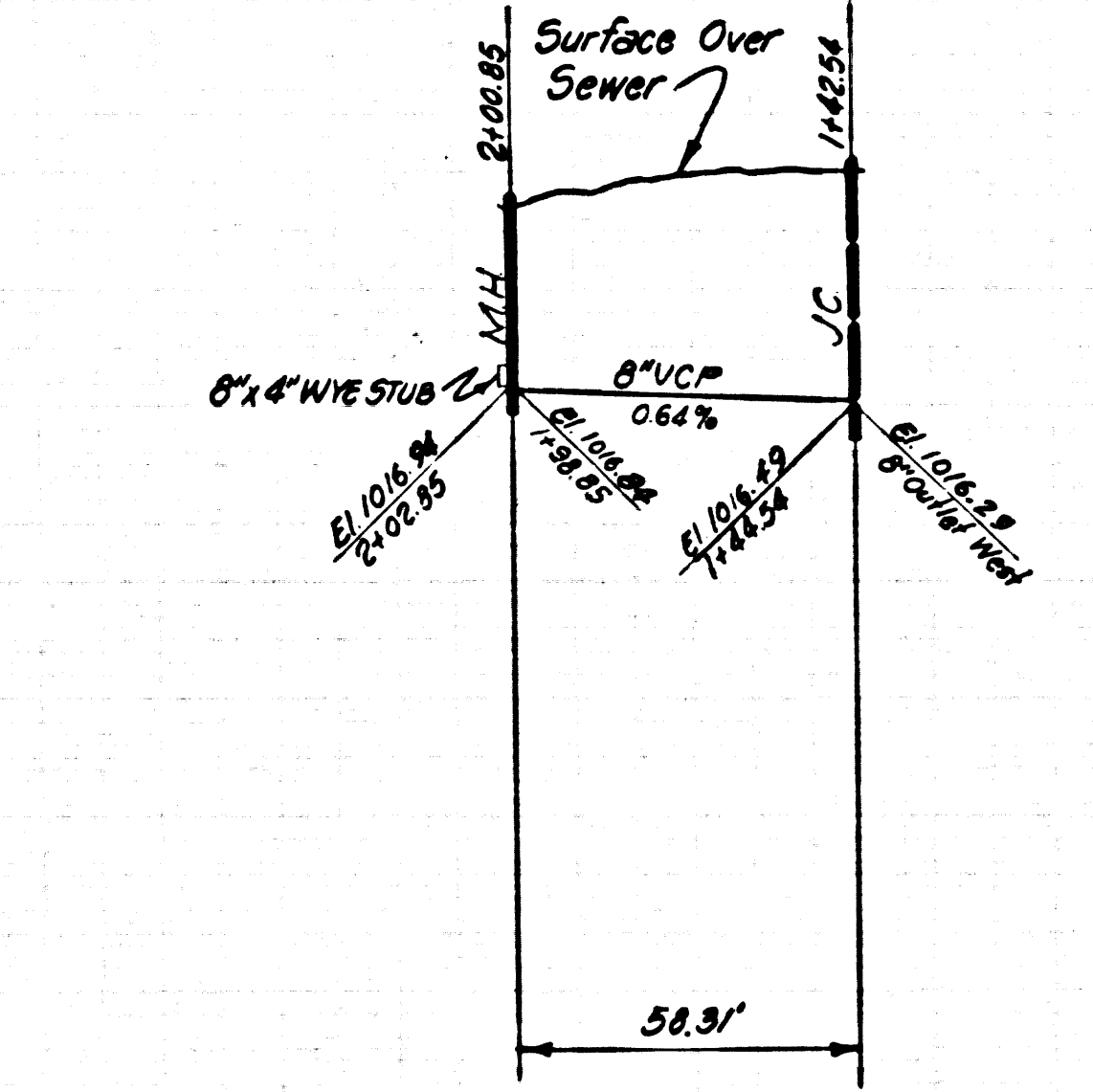
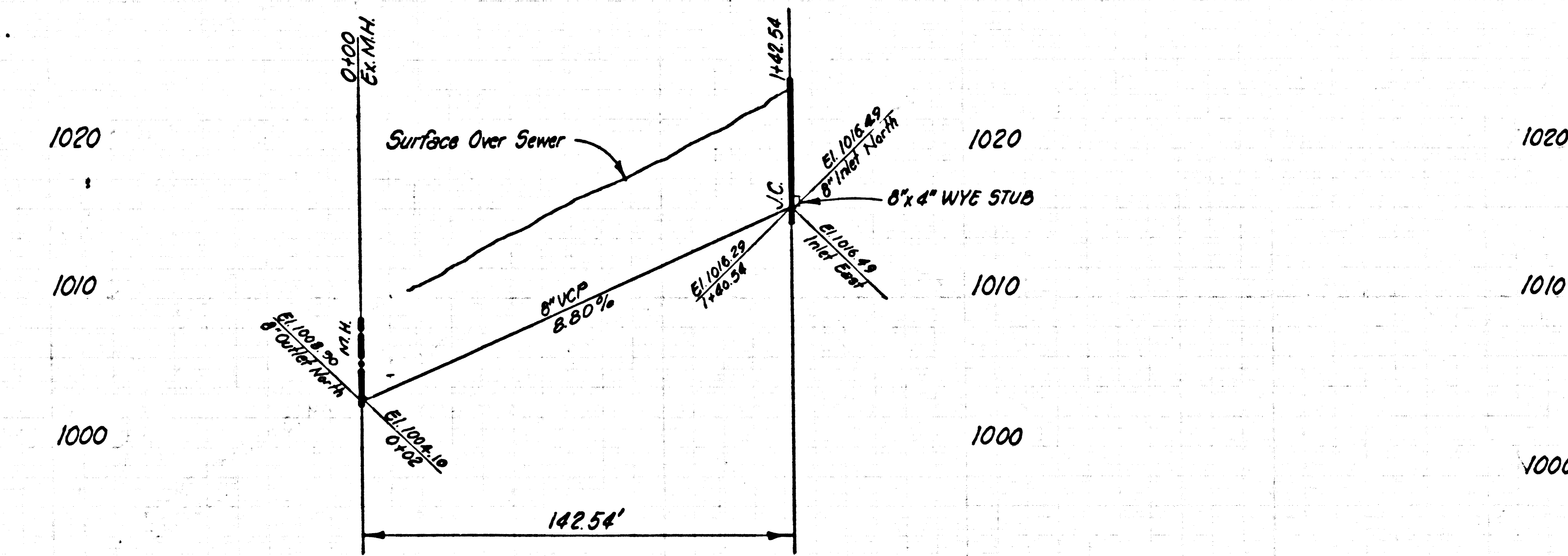
NOTES:
 GRADES TO WHICH THIS IMPROVEMENT IS TO BE CONSTRUCTED ARE SHOWN ON PLANS AND PROFILES. GRADE POINTS FOR TOP OF CURBS, CENTER LINE OF STREETS, OR CENTER LINE OF ALLEYS ARE SHOWN BY CIRCLES ON PROFILES. AT ALL POINTS BETWEEN DESIGNATED POINTS THE GRADE SHALL BE "F" ADJUSTED SO AS TO CONFORM TO A STRAIGHT LINE BETWEEN SAID DESIGNATED POINTS. ELEVATIONS ARE IN FEET ABOVE U.S.C. & G.S. MEAN DATUM OF 1929.
 THE DRAWINGS AND DATA HEREON ARE HEREBY MADE A PART OF THE SPECIFICATIONS, "FOR PUBLIC WORKS CONTRACTING" WORK SHALL BE CONSTRUCTED ACCORDING TO STANDARD SPECIFICATIONS DATED JULY 2, 1962, ON FILE IN THE OFFICE OF THE COUNTY ENGINEER AND SHALL BE PROSECUTED ONLY IN THE PRESENCE OF THE COUNTY ENGINEER.
 BEFORE WORK CAN BE STARTED, THE CONTRACTOR MUST OBTAIN A PERMIT TO EXCAVATE IN COUNTY STREETS FROM THE L.A. COUNTY ROAD DEPT., DISTRICT OFFICE NO. 1, AND PAY A FEE TO THE COUNTY ENGINEER, ROOM 302, COUNTY ENGINEERING BUILDING, 128 SOUTH SPRING STREET, LOS ANGELES, CALIFORNIA. A PERMIT MUST BE OBTAINED FROM THE STATE OF CALIFORNIA, DIVISION OF HIGHWAYS, 128 SOUTH SPRING STREET, LOS ANGELES, CALIFORNIA.

COUNTY OF LOS ANGELES, CALIFORNIA
 JOHN A. LAMBIE, COUNTY ENGINEER LAS VIRGENES MUNICIPAL WATER DISTRICT
 APPROVED BY John R. Peas REGIONAL ENGINEER APPROVED BY John R. Peas CHIEF ENGINEER

CHECKED BY John R. Peas REG. C. E. NO. 2872

COLLECT CHARGES AS INDICATED

J. N. 0369.79



P. C. 8289 PAGE 2

DOUBLE SCALE

SEE LVMWD FOR CONNECTION CHARGES
 COLLECT NO CHARGES FOR LOS ANGELES CO.

41499