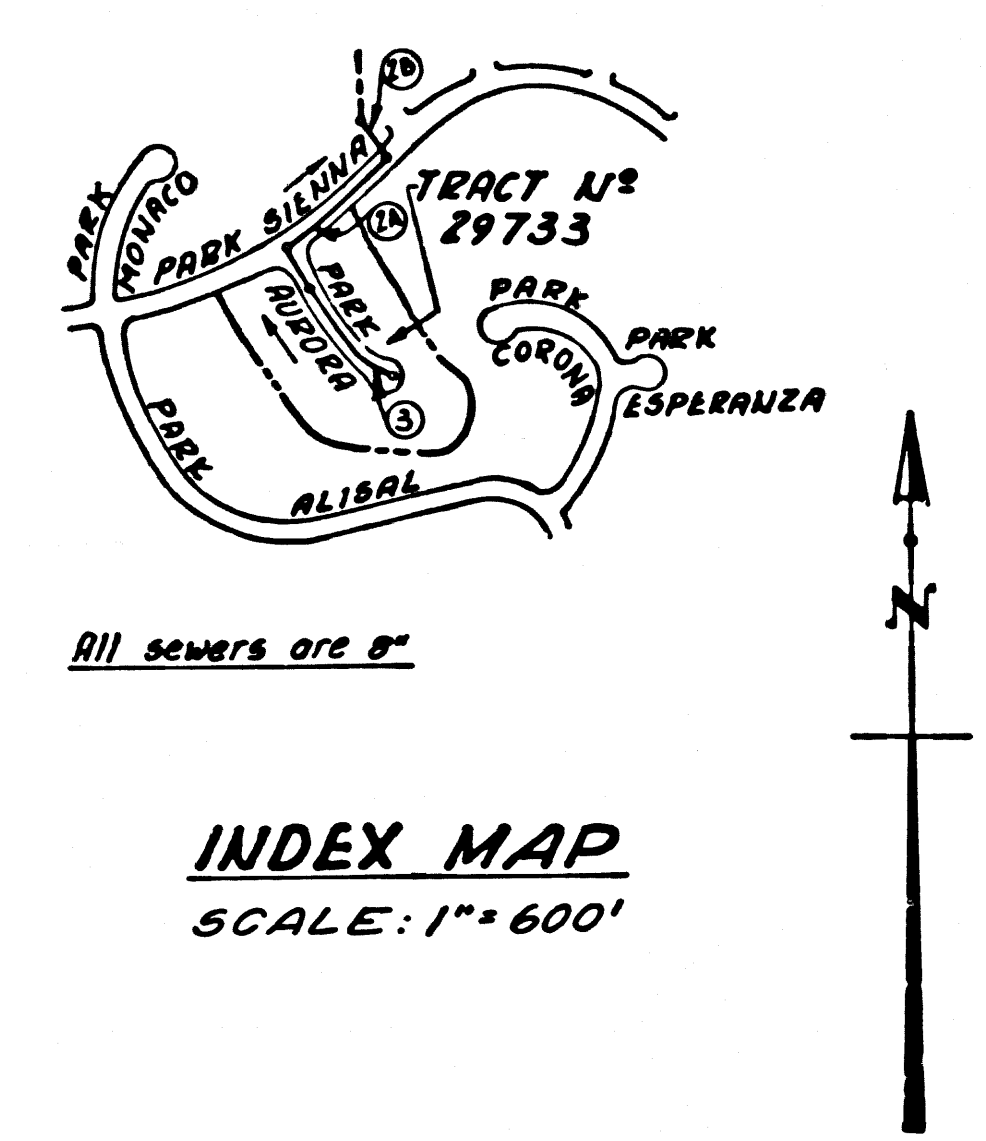


B.M. B.Y. 7537 ELEV. 922.707 (1965 ADI)
 1" x 5" SCREEN W/ E. CORD CATCH BASIN ON
 SW COR. MULHOLLAND DR. + CALABASAS
 RD. 70 FT. 5" x 20 FT. W. C/L INT. MKD (BM)
 MALIBU QUAD. 1965

THE FOLLOWING LATEST REVISED STANDARD PLANS ON FILE IN THE OFFICE OF THE COUNTY ENGINEER SHALL APPLY IN THE CONSTRUCTION OF THIS PROJECT.

LEGEND	
MINIMUM PUBLIC SAFETY REQUIREMENTS	S-1
BRICK MANHOLE	S-2
HOUSE-ENCASED PRECAST CONCRETE MANHOLE	S-3
REINFORCED PRECAST CONCRETE MANHOLE	S-4
MANHOLE FRAME AND COVER	S-10
STANDARD MANHOLE STEP	S-11
BERYLITE AND SEWER PIPE	S-21
CRADLING AND ENCASMENT	S-23
W/LL OR TEE SUPPORT	S-24
ALLOWABLE TRENCH WIDTH	S-33



CALABASAS BLDG. DIST. NO. 91

PROFILE, ALIGNMENT AND GRADE OF **P.C. 8292**
SANITARY SEWERS PAGE 1
 TO BE CONSTRUCTED IN
TRACT No. 29733

PRIVATE CONTRACT NO. 8292

W.S. 60
 2 SHEETS, 3 PAGES
 SCALE: HORIZ. 1" = 40' VERT. 1" = 4'
 DATE: MARCH 31, 1969
 PREPARED IN THE OFFICES OF
V.M. ENGINEERS ARCHITECTS PLANNERS
 5815 Van Nuys Blvd., Van Nuys, California 91411 (213) 873-4410 7th Fl.
 By: *John B. Ode*
 REG. C.E. NO. 15948
 FOR LEGEND SEE PLAN NO. S-1

41166

- NOTES:
1. PROVIDE STAKES ON THE PROPERTY LINE OR PROPERTY LINES PRODUCED AT RIGHT ANGLES TO THE SEWER LINE AT THE CENTER LINE OF EACH MANHOLE.
 2. NO REPRESENTATIVE OF THE COUNTY ENGINEER WILL SURVEY OR LAY OUT ANY PORTION OF THE WORK.
 3. THE PRIVATE ENGINEER SHALL FURNISH THE COUNTY ENGINEER WITH GRADE SHEETS AND STATIONING FOR ALL HOUSE LATERALS "T" AND "Y" BRANCHES AND SHALL PROVIDE STAKES FOR THEM AT THEIR PROPER LOCATIONS WITH STATIONING PLAINLY MARKED. ALL HOUSE LATERALS SHALL BE CONSTRUCTED IN A STRAIGHT ALIGNMENT AT RIGHT ANGLES FROM THE MAIN LINE SEWER EXCEPT AS SHOWN ON THE PLANS. HOUSE LATERALS FROM CHIMNEYS SHALL NOT HAVE AN ANGLE OF LESS THAN 45° WITH THE MAIN LINE SEWER. ANY CHANGE IN ALIGNMENT SHALL BE REQUESTED IN WRITING BY THE PRIVATE ENGINEER.
 4. THE PRIVATE ENGINEER SHALL FURNISH THE HOUSE LATERAL DEPTH AT THE PROPERTY LINE BELOW THE TOP OF CURB ELEVATION FOR EACH HOUSE LATERAL ON THE GRADE SHEET.
 5. NO REVISIONS SHALL BE MADE IN THESE PLANS WITHOUT THE APPROVAL OF THE COUNTY ENGINEER.
 6. THE CONTRACTOR SHALL NOTIFY THE CONSTRUCTION DIVISION BY TELEPHONE, MADISON 9-487, EXT. 8158, AT LEAST TWENTY-FOUR HOURS BEFORE STARTING ANY WORK UNDER THE CONTRACT.
 7. "T" OR "Y" BRANCHES MAY BE MADE FOR CONNECTIONS TO THE MAINLINE EXCEPT AS NOTED.
 8. ALL STRUCTURES SHALL BE EITHER BRICK MANHOLES PER S-3 OR PRECAST CONCRETE MANHOLES PER S-3 OR S-4 EXCEPT AS NOTED.
 9. MANHOLE TOPS IN UNIMPROVED HIGHWAYS TO BE SIX INCHES ABOVE FINISHED GRADE.
 10. USE EXTRA STRENGTH PIPE ALL PIPE IS STANDARD DEPTH EXCEPT AS NOTED.
 11. VITRIFIED CLAY PIPE JOINTS SHALL BE TYPE "D" "F" OR "G" PER STANDARD SPECIFICATIONS SECTION 208-2.
 12. IF A POWER POLE IS WITHIN THREE FEET OF THE SEWER, THE SEWER SHALL BE ENCASED, PER S-23, TWO FEET ON EACH SIDE FROM THE POINT OF INTERFERENCE.
 13. IF DURING THE COURSE OF CONSTRUCTION IT IS DETERMINED THAT THERE IS LESS THAN FOUR FEET OF COVER OVER THE TOP OF A MAIN LINE OR HOUSE LATERAL V.C.P. SEWER WHICH IS NOT INDICATED ON THE PLANS, THE PIPE SHALL BE ENCASED PER S-23, UNLESS OTHERWISE APPROVED BY THE COUNTY ENGINEER.
 14. HOUSE LATERALS TO BE CONSTRUCTED WITH INVERTS AT PROPERTY LINE 4 FEET BELOW CURB GRADE EXCEPT AS NOTED.
 15. REFER TO ALL TRENCHES WITHIN PAVED AREAS TO MEET L.A. COUNTY ROAD DEPT. OR CALIFORNIA STATE HIGHWAY REQUIREMENTS IN ACCORDANCE WITH PERMITS.
 16. SAMPLES TO BE AIR PRESSURE TESTED PER SECTION 206-8.3.7 C OF THE STANDARD SPECIFICATIONS REGARDING SAFETY ORDERS. REFER TO SECTION 7-10-6.1 OF THE STANDARD SPECIFICATIONS REGARDING SAFETY ORDERS.
 17. ALL JOINTS BETWEEN CAST PIPE AND VITRIFIED CLAY PIPE SHALL BE MADE WITH A RUBBER SLARING JOINT, TYPE "C" OR "D" (WITH BUSHING IF NECESSARY) PER STANDARD SPECIFICATIONS, SECTION 208-2.

NOTES:
 GRADES TO WHICH THIS IMPROVEMENT IS TO BE CONSTRUCTED ARE SHOWN ON PLANS AND PROFILES. GRADE POINTS FOR TOP OF CURBS, CENTER LINE OF STREETS, OR CENTER LINE OF ALLEYS ARE SHOWN BY CIRCLES ON PROFILES. AT ALL POINTS BETWEEN DESIGNATED POINTS THE GRADE SHALL BE ESTABLISHED SO AS TO CONFORM TO A STRAIGHT LINE DRAWN BETWEEN SAID DESIGNATED POINTS. ELEVATIONS ARE IN FEET ABOVE U.S.C. & G.S. SEA LEVEL DATUM OF 1929.
 WORK SHALL BE CONSTRUCTED ACCORDING TO THE STANDARD SPECIFICATIONS FOR PUBLIC WORKS CONSTRUCTION AND SPECIFICATIONS FOR THE CONSTRUCTION OF SANITARY SEWERS, DATED 1-1-67, REVISED, AND SHALL BE PROSECUTED ONLY IN THE PRESENCE OF THE COUNTY ENGINEER.
 BEFORE WORK CAN BE STARTED, THE CONTRACTOR MUST OBTAIN A PERMIT TO EXCAVATE IN COUNTY STREETS FROM THE L.A. COUNTY ROAD DEPT., DISTRICT OFFICE NO. 10000 AND PAY A FEE TO THE COUNTY ENGINEER, ROOM 300, COUNTY ENGINEERING BUILDING, ONE WEST SECOND STREET OR REGIONAL OFFICE, SUFFICIENT TO COVER THE COST OF CONSTRUCTION INSPECTION AND RECORD PLANS.
 APPROVAL OF THIS PLAN BY THE COUNTY OF LOS ANGELES DOES NOT CONSTITUTE A REPRESENTATION AS TO THE ACCURACY OF THE LOCATION OR OF THE EXISTENCE OR NON-EXISTENCE OF ANY UNDERGROUND UTILITY PIPE, OR STRUCTURE WITHIN THE LIMITS OF THIS PROJECT. THIS NOTE APPLIES TO ALL PAGES.
 NO WORK IS TO BE DONE IN A STATE HIGHWAY. A PERMIT MUST BE OBTAINED FROM THE STATE OF CALIFORNIA, DIVISION OF HIGHWAYS, 120 SOUTH BRIDGE STREET, LOS ANGELES, CALIFORNIA.

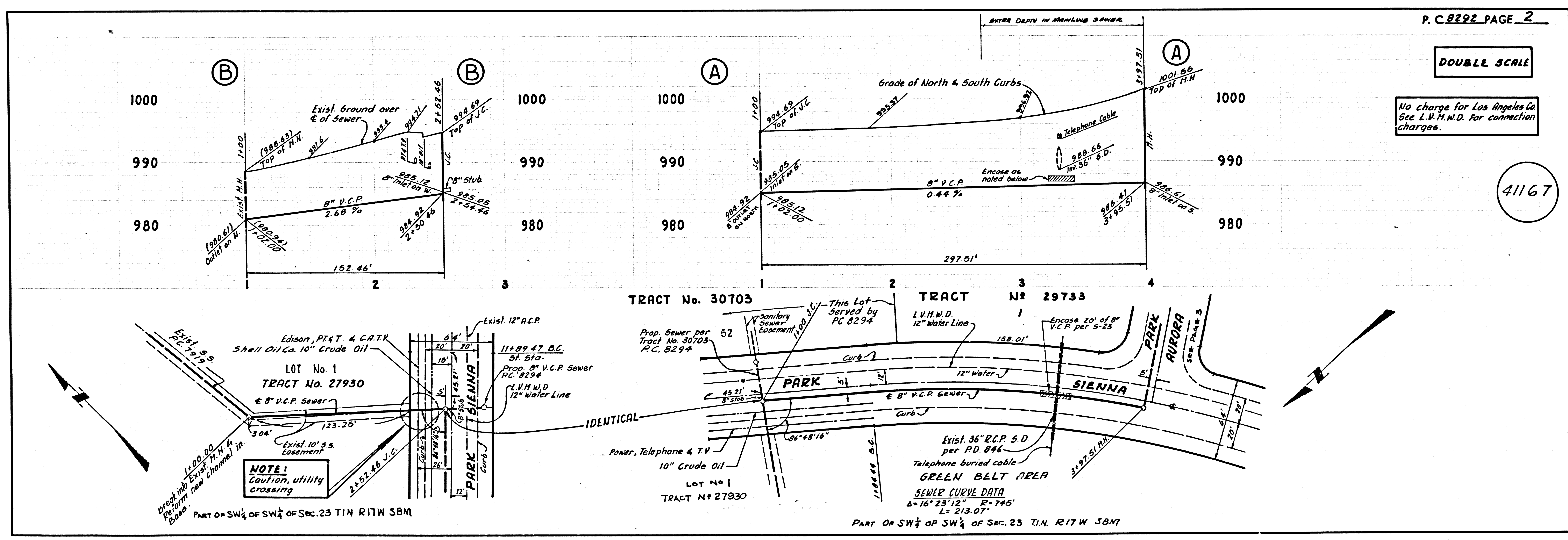
COUNTY OF LOS ANGELES, CALIFORNIA
 JOHN A. LAMBIE, COUNTY ENGINEER
 APPROVED BY: *John A. Lambie*
 H. W. STOKES, CHIEF ENGINEER
 AND GENERAL MANAGER L.V.M.W.D.
 APPROVED BY: *H.W. Stokes*

CHECKED BY: *S.W. Duda* 6-12-69
 REG. C.E. NO. 9426

COLLECT CHARGES AS INDICATED

NOTICE TO CONTRACTOR
 The existence and location of any underground utility pipes or structures shown on these plans are obtained by a search of the available records to the best of my knowledge. There are no existing utilities except as shown on these plans. The contractor is required to take due precautionary measures to protect the utility lines shown and any other lines not of record or not shown on these plans.
John B. Ode
 S.E.E. 12948

J.N. 0250.02



DOUBLE SCALE

No charge for Los Angeles Co
See L.V.M.W.D. for connection
charges.

41168

