

B.M. BY 7537 ELEV. 922.787 (1945 ADJ)  
 L+ SCREW IN CORD CATCH BASIN ON  
 S.W. COR. MULHOLLAND DR. + CALABASAS  
 RD. 70 FT. S + 20 FT. W C/L INT. MKD  
 (6M)  
 MALIBU QUAD. 19 65

THE FOLLOWING LATEST REVISED STANDARD PLANS ON FILE IN THE OFFICE OF THE COUNTY ENGINEER  
 SHALL APPLY IN THE CONSTRUCTION OF THIS PROJECT:

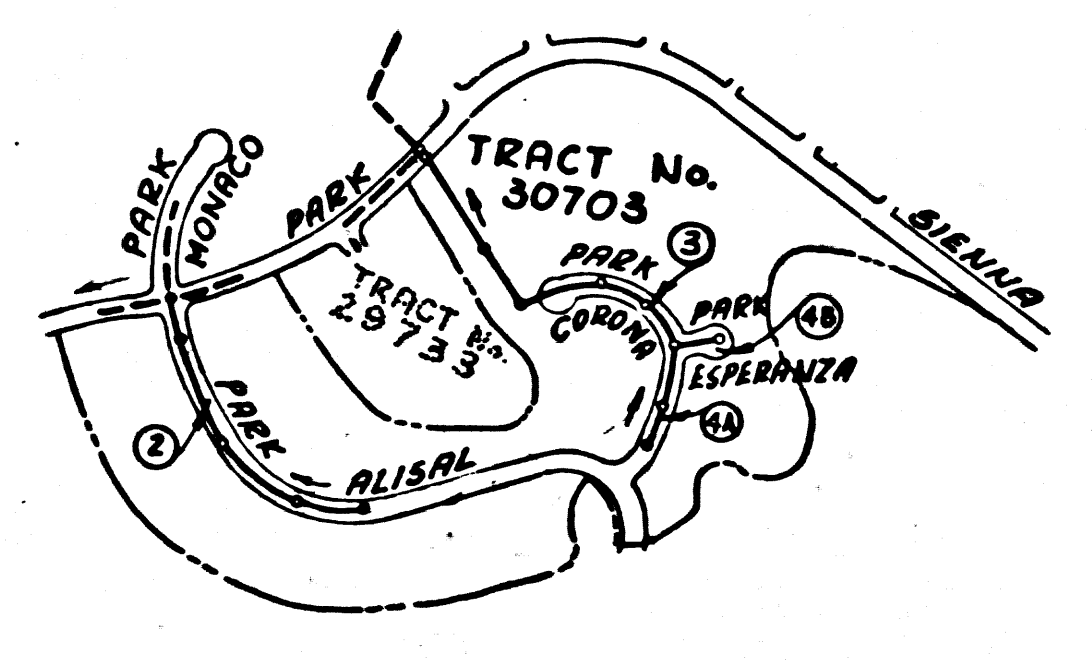
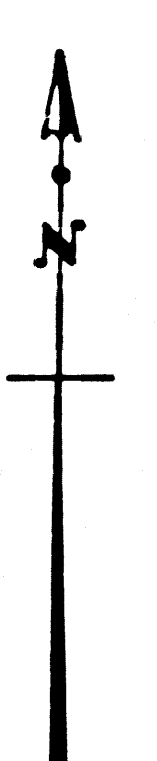
LEGEND	
MINIMUM PUBLIC SAFETY REQUIREMENTS	5-1
BRICK MANHOLE	5-2
NON-REINFORCED PRECAST CONCRETE MANHOLE	5-3
REINFORCED PRECAST CONCRETE MANHOLE	5-4
MANHOLE 18" DIA. AND COVER	5-5
STANDARD MANHOLE STEP	5-6
BEDDING FOR SEWER PIPE	5-7
CRADLING AND ENCASUREMENT	5-8
W/2 OR T/2 SUPPORT	5-9
ALLOWABLE TRENCH WIDTH	5-10
PIPE RICHES	5-11
BAFFLE BOARDS	5-12

### CALABASAS BLDG. DIST. NO. 9.1

PROFILE, ALIGNMENT AND GRADE OF  
**SANITARY SEWERS** P.C. 8294  
 TO BE CONSTRUCTED IN  
 TRACT No. 30703 PAGE 1

### PRIVATE CONTRACT NO. 8294

W.S. 60  
 2 SHEETS, 4 PAGES  
 SCALE: VERT. 1" = 4' HORIZ. 1" = 40'  
 APRIL 19, 1969  
 PREPARED IN THE OFFICES OF  
 J.A. LAMBE  
 5919 VANS WAYS BLVD.  
 MALIBU, CALIF. 90265  
 REG. C.E. NO. 15228



All Streets are 6"

INDEX MAP  
 SCALE: 1" = 600'

REVISION  
 PAGE 3 - RELOCATE MANHOLE FROM STA. 2+10.38 TO STA.  
 2+14.38. PROVIDE 10' OF ENCASEMENT AT APPROX.  
 STA. 2+04.  
 APPROVED: *J.A. Lambe*  
 OFFICE OF COUNTY ENGINEER P.C.E. NF11086

COLLECT CHARGES  
 AS INDICATED

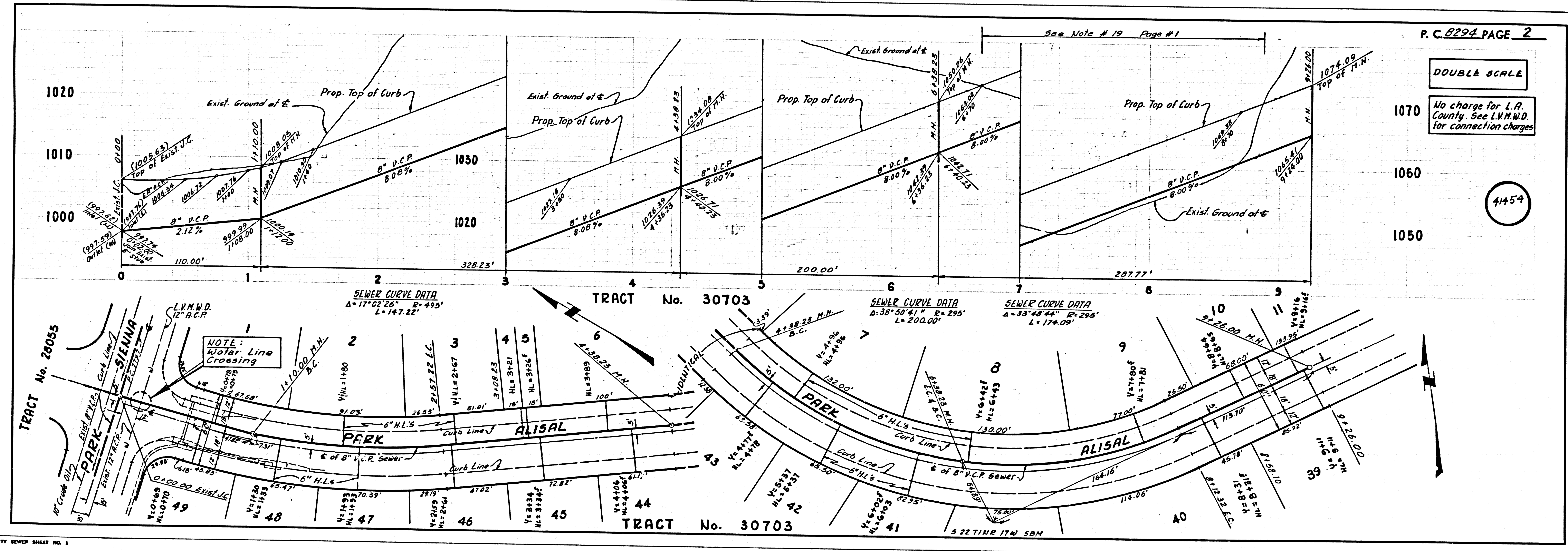
NOTICE TO CONTRACTOR  
 The assistance and location of any underground  
 utility pipes or structures shown on these plans  
 are obtained by a search of the available records.  
 To the best of my knowledge there are no existing  
 utilities except as shown on these plans.  
 The contractor is required to take such precau-  
 tionary measures to protect the utility lines shown  
 and any other lines not of record or not shown on  
 these plans.  
*J.A. Lambe*  
 P.C.E. 15228

NOTE:  
 GRADES TO WHICH THIS IMPROVEMENT IS TO BE CONSTRUCTED ARE SHOWN ON PLANS AND PROFILE. GRADE POINTS FOR TOP OF  
 CURB, CENTER LINE OF STREET, OR CENTER LINE OF ALLEY ARE SHOWN BY CIRCLES ON PROFILE. AT ALL POINTS BETWEEN DESIGNATED  
 POINTS THE GRADE SHALL BE ESTABLISHED SO AS TO CONFORM TO A STRAIGHT LINE BETWEEN SAID DESIGNATED POINTS.  
 ELEVATIONS ARE BY THE ABOVE U.C. & G.S. MEAN LEVEL BATHY OF 1929.  
 NOTES: (1) ALL CONSTRUCTION SHALL BE IN ACCORDANCE WITH THE STANDARD SPECIFICATIONS FOR PUBLIC WORKS  
 (2) ALL CONSTRUCTION SHALL BE IN ACCORDANCE WITH THE STANDARD SPECIFICATIONS FOR SANITARY SEWERS DATED 1-2-69  
 (3) ALL CONSTRUCTION SHALL BE IN ACCORDANCE WITH THE STANDARD SPECIFICATIONS FOR SANITARY SEWERS DATED 1-2-69  
 (4) ALL CONSTRUCTION SHALL BE IN ACCORDANCE WITH THE STANDARD SPECIFICATIONS FOR SANITARY SEWERS DATED 1-2-69  
 (5) ALL CONSTRUCTION SHALL BE IN ACCORDANCE WITH THE STANDARD SPECIFICATIONS FOR SANITARY SEWERS DATED 1-2-69  
 (6) ALL CONSTRUCTION SHALL BE IN ACCORDANCE WITH THE STANDARD SPECIFICATIONS FOR SANITARY SEWERS DATED 1-2-69  
 (7) ALL CONSTRUCTION SHALL BE IN ACCORDANCE WITH THE STANDARD SPECIFICATIONS FOR SANITARY SEWERS DATED 1-2-69  
 (8) ALL CONSTRUCTION SHALL BE IN ACCORDANCE WITH THE STANDARD SPECIFICATIONS FOR SANITARY SEWERS DATED 1-2-69  
 (9) ALL CONSTRUCTION SHALL BE IN ACCORDANCE WITH THE STANDARD SPECIFICATIONS FOR SANITARY SEWERS DATED 1-2-69  
 (10) ALL CONSTRUCTION SHALL BE IN ACCORDANCE WITH THE STANDARD SPECIFICATIONS FOR SANITARY SEWERS DATED 1-2-69  
 (11) ALL CONSTRUCTION SHALL BE IN ACCORDANCE WITH THE STANDARD SPECIFICATIONS FOR SANITARY SEWERS DATED 1-2-69  
 (12) ALL CONSTRUCTION SHALL BE IN ACCORDANCE WITH THE STANDARD SPECIFICATIONS FOR SANITARY SEWERS DATED 1-2-69  
 (13) ALL CONSTRUCTION SHALL BE IN ACCORDANCE WITH THE STANDARD SPECIFICATIONS FOR SANITARY SEWERS DATED 1-2-69  
 (14) ALL CONSTRUCTION SHALL BE IN ACCORDANCE WITH THE STANDARD SPECIFICATIONS FOR SANITARY SEWERS DATED 1-2-69  
 (15) ALL CONSTRUCTION SHALL BE IN ACCORDANCE WITH THE STANDARD SPECIFICATIONS FOR SANITARY SEWERS DATED 1-2-69  
 (16) ALL CONSTRUCTION SHALL BE IN ACCORDANCE WITH THE STANDARD SPECIFICATIONS FOR SANITARY SEWERS DATED 1-2-69  
 (17) ALL CONSTRUCTION SHALL BE IN ACCORDANCE WITH THE STANDARD SPECIFICATIONS FOR SANITARY SEWERS DATED 1-2-69  
 (18) ALL CONSTRUCTION SHALL BE IN ACCORDANCE WITH THE STANDARD SPECIFICATIONS FOR SANITARY SEWERS DATED 1-2-69  
 (19) ALL CONSTRUCTION SHALL BE IN ACCORDANCE WITH THE STANDARD SPECIFICATIONS FOR SANITARY SEWERS DATED 1-2-69  
 (20) ALL CONSTRUCTION SHALL BE IN ACCORDANCE WITH THE STANDARD SPECIFICATIONS FOR SANITARY SEWERS DATED 1-2-69  
 (21) ALL CONSTRUCTION SHALL BE IN ACCORDANCE WITH THE STANDARD SPECIFICATIONS FOR SANITARY SEWERS DATED 1-2-69  
 (22) ALL CONSTRUCTION SHALL BE IN ACCORDANCE WITH THE STANDARD SPECIFICATIONS FOR SANITARY SEWERS DATED 1-2-69  
 (23) ALL CONSTRUCTION SHALL BE IN ACCORDANCE WITH THE STANDARD SPECIFICATIONS FOR SANITARY SEWERS DATED 1-2-69  
 (24) ALL CONSTRUCTION SHALL BE IN ACCORDANCE WITH THE STANDARD SPECIFICATIONS FOR SANITARY SEWERS DATED 1-2-69  
 (25) ALL CONSTRUCTION SHALL BE IN ACCORDANCE WITH THE STANDARD SPECIFICATIONS FOR SANITARY SEWERS DATED 1-2-69  
 (26) ALL CONSTRUCTION SHALL BE IN ACCORDANCE WITH THE STANDARD SPECIFICATIONS FOR SANITARY SEWERS DATED 1-2-69  
 (27) ALL CONSTRUCTION SHALL BE IN ACCORDANCE WITH THE STANDARD SPECIFICATIONS FOR SANITARY SEWERS DATED 1-2-69  
 (28) ALL CONSTRUCTION SHALL BE IN ACCORDANCE WITH THE STANDARD SPECIFICATIONS FOR SANITARY SEWERS DATED 1-2-69  
 (29) ALL CONSTRUCTION SHALL BE IN ACCORDANCE WITH THE STANDARD SPECIFICATIONS FOR SANITARY SEWERS DATED 1-2-69  
 (30) ALL CONSTRUCTION SHALL BE IN ACCORDANCE WITH THE STANDARD SPECIFICATIONS FOR SANITARY SEWERS DATED 1-2-69  
 (31) ALL CONSTRUCTION SHALL BE IN ACCORDANCE WITH THE STANDARD SPECIFICATIONS FOR SANITARY SEWERS DATED 1-2-69  
 (32) ALL CONSTRUCTION SHALL BE IN ACCORDANCE WITH THE STANDARD SPECIFICATIONS FOR SANITARY SEWERS DATED 1-2-69  
 (33) ALL CONSTRUCTION SHALL BE IN ACCORDANCE WITH THE STANDARD SPECIFICATIONS FOR SANITARY SEWERS DATED 1-2-69  
 (34) ALL CONSTRUCTION SHALL BE IN ACCORDANCE WITH THE STANDARD SPECIFICATIONS FOR SANITARY SEWERS DATED 1-2-69  
 (35) ALL CONSTRUCTION SHALL BE IN ACCORDANCE WITH THE STANDARD SPECIFICATIONS FOR SANITARY SEWERS DATED 1-2-69  
 (36) ALL CONSTRUCTION SHALL BE IN ACCORDANCE WITH THE STANDARD SPECIFICATIONS FOR SANITARY SEWERS DATED 1-2-69  
 (37) ALL CONSTRUCTION SHALL BE IN ACCORDANCE WITH THE STANDARD SPECIFICATIONS FOR SANITARY SEWERS DATED 1-2-69  
 (38) ALL CONSTRUCTION SHALL BE IN ACCORDANCE WITH THE STANDARD SPECIFICATIONS FOR SANITARY SEWERS DATED 1-2-69  
 (39) ALL CONSTRUCTION SHALL BE IN ACCORDANCE WITH THE STANDARD SPECIFICATIONS FOR SANITARY SEWERS DATED 1-2-69  
 (40) ALL CONSTRUCTION SHALL BE IN ACCORDANCE WITH THE STANDARD SPECIFICATIONS FOR SANITARY SEWERS DATED 1-2-69  
 (41) ALL CONSTRUCTION SHALL BE IN ACCORDANCE WITH THE STANDARD SPECIFICATIONS FOR SANITARY SEWERS DATED 1-2-69  
 (42) ALL CONSTRUCTION SHALL BE IN ACCORDANCE WITH THE STANDARD SPECIFICATIONS FOR SANITARY SEWERS DATED 1-2-69  
 (43) ALL CONSTRUCTION SHALL BE IN ACCORDANCE WITH THE STANDARD SPECIFICATIONS FOR SANITARY SEWERS DATED 1-2-69  
 (44) ALL CONSTRUCTION SHALL BE IN ACCORDANCE WITH THE STANDARD SPECIFICATIONS FOR SANITARY SEWERS DATED 1-2-69  
 (45) ALL CONSTRUCTION SHALL BE IN ACCORDANCE WITH THE STANDARD SPECIFICATIONS FOR SANITARY SEWERS DATED 1-2-69  
 (46) ALL CONSTRUCTION SHALL BE IN ACCORDANCE WITH THE STANDARD SPECIFICATIONS FOR SANITARY SEWERS DATED 1-2-69  
 (47) ALL CONSTRUCTION SHALL BE IN ACCORDANCE WITH THE STANDARD SPECIFICATIONS FOR SANITARY SEWERS DATED 1-2-69  
 (48) ALL CONSTRUCTION SHALL BE IN ACCORDANCE WITH THE STANDARD SPECIFICATIONS FOR SANITARY SEWERS DATED 1-2-69  
 (49) ALL CONSTRUCTION SHALL BE IN ACCORDANCE WITH THE STANDARD SPECIFICATIONS FOR SANITARY SEWERS DATED 1-2-69  
 (50) ALL CONSTRUCTION SHALL BE IN ACCORDANCE WITH THE STANDARD SPECIFICATIONS FOR SANITARY SEWERS DATED 1-2-69  
 (51) ALL CONSTRUCTION SHALL BE IN ACCORDANCE WITH THE STANDARD SPECIFICATIONS FOR SANITARY SEWERS DATED 1-2-69  
 (52) ALL CONSTRUCTION SHALL BE IN ACCORDANCE WITH THE STANDARD SPECIFICATIONS FOR SANITARY SEWERS DATED 1-2-69  
 (53) ALL CONSTRUCTION SHALL BE IN ACCORDANCE WITH THE STANDARD SPECIFICATIONS FOR SANITARY SEWERS DATED 1-2-69  
 (54) ALL CONSTRUCTION SHALL BE IN ACCORDANCE WITH THE STANDARD SPECIFICATIONS FOR SANITARY SEWERS DATED 1-2-69  
 (55) ALL CONSTRUCTION SHALL BE IN ACCORDANCE WITH THE STANDARD SPECIFICATIONS FOR SANITARY SEWERS DATED 1-2-69  
 (56) ALL CONSTRUCTION SHALL BE IN ACCORDANCE WITH THE STANDARD SPECIFICATIONS FOR SANITARY SEWERS DATED 1-2-69  
 (57) ALL CONSTRUCTION SHALL BE IN ACCORDANCE WITH THE STANDARD SPECIFICATIONS FOR SANITARY SEWERS DATED 1-2-69  
 (58) ALL CONSTRUCTION SHALL BE IN ACCORDANCE WITH THE STANDARD SPECIFICATIONS FOR SANITARY SEWERS DATED 1-2-69  
 (59) ALL CONSTRUCTION SHALL BE IN ACCORDANCE WITH THE STANDARD SPECIFICATIONS FOR SANITARY SEWERS DATED 1-2-69  
 (60) ALL CONSTRUCTION SHALL BE IN ACCORDANCE WITH THE STANDARD SPECIFICATIONS FOR SANITARY SEWERS DATED 1-2-69  
 (61) ALL CONSTRUCTION SHALL BE IN ACCORDANCE WITH THE STANDARD SPECIFICATIONS FOR SANITARY SEWERS DATED 1-2-69  
 (62) ALL CONSTRUCTION SHALL BE IN ACCORDANCE WITH THE STANDARD SPECIFICATIONS FOR SANITARY SEWERS DATED 1-2-69  
 (63) ALL CONSTRUCTION SHALL BE IN ACCORDANCE WITH THE STANDARD SPECIFICATIONS FOR SANITARY SEWERS DATED 1-2-69  
 (64) ALL CONSTRUCTION SHALL BE IN ACCORDANCE WITH THE STANDARD SPECIFICATIONS FOR SANITARY SEWERS DATED 1-2-69  
 (65) ALL CONSTRUCTION SHALL BE IN ACCORDANCE WITH THE STANDARD SPECIFICATIONS FOR SANITARY SEWERS DATED 1-2-69  
 (66) ALL CONSTRUCTION SHALL BE IN ACCORDANCE WITH THE STANDARD SPECIFICATIONS FOR SANITARY SEWERS DATED 1-2-69  
 (67) ALL CONSTRUCTION SHALL BE IN ACCORDANCE WITH THE STANDARD SPECIFICATIONS FOR SANITARY SEWERS DATED 1-2-69  
 (68) ALL CONSTRUCTION SHALL BE IN ACCORDANCE WITH THE STANDARD SPECIFICATIONS FOR SANITARY SEWERS DATED 1-2-69  
 (69) ALL CONSTRUCTION SHALL BE IN ACCORDANCE WITH THE STANDARD SPECIFICATIONS FOR SANITARY SEWERS DATED 1-2-69  
 (70) ALL CONSTRUCTION SHALL BE IN ACCORDANCE WITH THE STANDARD SPECIFICATIONS FOR SANITARY SEWERS DATED 1-2-69  
 (71) ALL CONSTRUCTION SHALL BE IN ACCORDANCE WITH THE STANDARD SPECIFICATIONS FOR SANITARY SEWERS DATED 1-2-69  
 (72) ALL CONSTRUCTION SHALL BE IN ACCORDANCE WITH THE STANDARD SPECIFICATIONS FOR SANITARY SEWERS DATED 1-2-69  
 (73) ALL CONSTRUCTION SHALL BE IN ACCORDANCE WITH THE STANDARD SPECIFICATIONS FOR SANITARY SEWERS DATED 1-2-69  
 (74) ALL CONSTRUCTION SHALL BE IN ACCORDANCE WITH THE STANDARD SPECIFICATIONS FOR SANITARY SEWERS DATED 1-2-69  
 (75) ALL CONSTRUCTION SHALL BE IN ACCORDANCE WITH THE STANDARD SPECIFICATIONS FOR SANITARY SEWERS DATED 1-2-69  
 (76) ALL CONSTRUCTION SHALL BE IN ACCORDANCE WITH THE STANDARD SPECIFICATIONS FOR SANITARY SEWERS DATED 1-2-69  
 (77) ALL CONSTRUCTION SHALL BE IN ACCORDANCE WITH THE STANDARD SPECIFICATIONS FOR SANITARY SEWERS DATED 1-2-69  
 (78) ALL CONSTRUCTION SHALL BE IN ACCORDANCE WITH THE STANDARD SPECIFICATIONS FOR SANITARY SEWERS DATED 1-2-69  
 (79) ALL CONSTRUCTION SHALL BE IN ACCORDANCE WITH THE STANDARD SPECIFICATIONS FOR SANITARY SEWERS DATED 1-2-69  
 (80) ALL CONSTRUCTION SHALL BE IN ACCORDANCE WITH THE STANDARD SPECIFICATIONS FOR SANITARY SEWERS DATED 1-2-69  
 (81) ALL CONSTRUCTION SHALL BE IN ACCORDANCE WITH THE STANDARD SPECIFICATIONS FOR SANITARY SEWERS DATED 1-2-69  
 (82) ALL CONSTRUCTION SHALL BE IN ACCORDANCE WITH THE STANDARD SPECIFICATIONS FOR SANITARY SEWERS DATED 1-2-69  
 (83) ALL CONSTRUCTION SHALL BE IN ACCORDANCE WITH THE STANDARD SPECIFICATIONS FOR SANITARY SEWERS DATED 1-2-69  
 (84) ALL CONSTRUCTION SHALL BE IN ACCORDANCE WITH THE STANDARD SPECIFICATIONS FOR SANITARY SEWERS DATED 1-2-69  
 (85) ALL CONSTRUCTION SHALL BE IN ACCORDANCE WITH THE STANDARD SPECIFICATIONS FOR SANITARY SEWERS DATED 1-2-69  
 (86) ALL CONSTRUCTION SHALL BE IN ACCORDANCE WITH THE STANDARD SPECIFICATIONS FOR SANITARY SEWERS DATED 1-2-69  
 (87) ALL CONSTRUCTION SHALL BE IN ACCORDANCE WITH THE STANDARD SPECIFICATIONS FOR SANITARY SEWERS DATED 1-2-69  
 (88) ALL CONSTRUCTION SHALL BE IN ACCORDANCE WITH THE STANDARD SPECIFICATIONS FOR SANITARY SEWERS DATED 1-2-69  
 (89) ALL CONSTRUCTION SHALL BE IN ACCORDANCE WITH THE STANDARD SPECIFICATIONS FOR SANITARY SEWERS DATED 1-2-69  
 (90) ALL CONSTRUCTION SHALL BE IN ACCORDANCE WITH THE STANDARD SPECIFICATIONS FOR SANITARY SEWERS DATED 1-2-69  
 (91) ALL CONSTRUCTION SHALL BE IN ACCORDANCE WITH THE STANDARD SPECIFICATIONS FOR SANITARY SEWERS DATED 1-2-69  
 (92) ALL CONSTRUCTION SHALL BE IN ACCORDANCE WITH THE STANDARD SPECIFICATIONS FOR SANITARY SEWERS DATED 1-2-69  
 (93) ALL CONSTRUCTION SHALL BE IN ACCORDANCE WITH THE STANDARD SPECIFICATIONS FOR SANITARY SEWERS DATED 1-2-69  
 (94) ALL CONSTRUCTION SHALL BE IN ACCORDANCE WITH THE STANDARD SPECIFICATIONS FOR SANITARY SEWERS DATED 1-2-69  
 (95) ALL CONSTRUCTION SHALL BE IN ACCORDANCE WITH THE STANDARD SPECIFICATIONS FOR SANITARY SEWERS DATED 1-2-69  
 (96) ALL CONSTRUCTION SHALL BE IN ACCORDANCE WITH THE STANDARD SPECIFICATIONS FOR SANITARY SEWERS DATED 1-2-69  
 (97) ALL CONSTRUCTION SHALL BE IN ACCORDANCE WITH THE STANDARD SPECIFICATIONS FOR SANITARY SEWERS DATED 1-2-69  
 (98) ALL CONSTRUCTION SHALL BE IN ACCORDANCE WITH THE STANDARD SPECIFICATIONS FOR SANITARY SEWERS DATED 1-2-69  
 (99) ALL CONSTRUCTION SHALL BE IN ACCORDANCE WITH THE STANDARD SPECIFICATIONS FOR SANITARY SEWERS DATED 1-2-69  
 (100) ALL CONSTRUCTION SHALL BE IN ACCORDANCE WITH THE STANDARD SPECIFICATIONS FOR SANITARY SEWERS DATED 1-2-69

COUNTY OF LOS ANGELES, CALIFORNIA  
 JOHN A. LAMBE, COUNTY ENGINEER  
 APPROVED BY: *J.A. Lambe*  
 REGIONAL ENGINEER  
 CHECKED BY: *John B. Miller*  
 DATE: 4-11-69  
 P.E. No. 14980

APPROVED BY: *John B. Miller*  
 REGIONAL ENGINEER  
 CHECKED BY: *John B. Miller*  
 DATE: 4-11-69  
 P.E. No. 14980

J.N. 0250.02



P.C. 8294 PAGE 2

DOUBLE SCALE

No charge for L.A. County. See L.A.M.W.D. for connection charges.

41454

