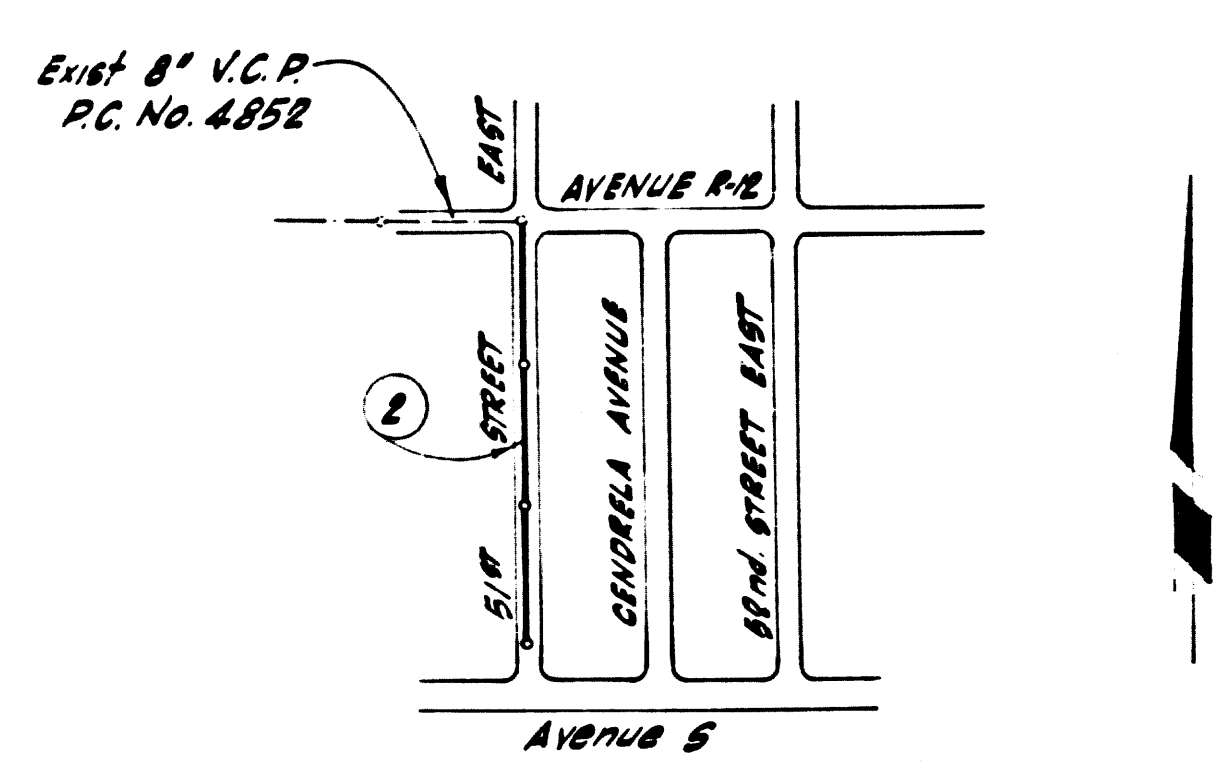


B.M. B.L. 257 ELEV. 2662.916
 R.P.M. Top 1st South of BCR 4th East &
 47th Street E. and 56th South &
 Avenue R-12.
 Palmdale QUAD. 19 65



INDEX MAP
 P.C. 8300
 SCALE: 1" = 600'

PALMDALE BLDG. DIST. NO. 8.1

PROFILE, ALIGNMENT AND GRADE OF
 SANITARY SEWERS
 CONSTRUCTED IN
 51ST STREET EAST

P.C. 8300
 PAGE 1

PRIVATE CONTRACT NO. 8300

W.S. 65
 1 SHEETS; 2 PAGES

SCALE: VERT. 1" = 4'
 HORIZ. 1" = 40'
 May 1969

PREPARED IN THE OFFICES OF
 NACHAZEL - LEONARD, INC.
 4830 Campus Dr. Newport Beach, Calif.

By: *[Signature]*
 REG. C. E. NO. 12828

41102

- NOTES
- HOUSE LATERALS TO BE CONSTRUCTED WITH INVERTS AT PROPERTY LINE 4 FEET BELOW CURB GRADE EXCEPT AS NOTED.
 - PROVIDE STAKES ON THE PROPERTY LINE OR PROPERTY LINES PRODUCED AT RIGHT ANGLES TO THE SEWER LINE AT THE CENTER LINE OF EACH MANHOLE.
 - NO REPRESENTATIVE OF THE COUNTY ENGINEER WILL SURVEY OR LAY OUT ANY PORTION OF THE WORK.
 - THE PRIVATE ENGINEER SHALL FURNISH THE COUNTY ENGINEER WITH GRADE SHEETS AND STATIONING FOR ALL HOUSE LATERALS AND "T" OR "T" BRANCHES AND SHALL PROVIDE STAKES FOR THEM AT THEIR PROPER LOCATIONS WITH STATIONING PLAINLY MARKED. ALL HOUSE LATERALS SHALL BE CONSTRUCTED IN A STRAIGHT ALIGNMENT AT RIGHT ANGLES FROM THE MAIN LINE SEWER EXCEPT AS SHOWN ON THE PLANS. HOUSE LATERALS FROM CHIMNEYS SHALL NOT HAVE AN ANGLE OF LESS THAN 45° WITH THE MAIN LINE SEWER. ANY CHANGE IN ALIGNMENT SHALL BE REQUESTED IN WRITING BY THE PRIVATE ENGINEER.
 - THE PRIVATE ENGINEER SHALL FURNISH THE HOUSE LATERAL DEPTH AT THE PROPERTY LINE BELOW THE TOP OF CURB ELEVATION FOR EACH HOUSE LATERAL ON THE GRADE SHEET.
 - NO REVISIONS SHALL BE MADE IN THESE PLANS WITHOUT THE APPROVAL OF THE COUNTY ENGINEER.
 - THE CONTRACTOR SHALL NOTIFY THE CONSTRUCTION DIVISION BY TELEPHONE, MADISON 9-0747, EXT. 81331, AT LEAST TWENTY-FOUR HOURS BEFORE STARTING ANY WORK UNDER THIS CONTRACT.
 - ALL STRUCTURES SHALL BE EITHER BRICK MANHOLES PER S-2 OR PRECAST CONCRETE MANHOLES PER S-3 OR S-4.
 - "T" OR "T" BRANCHES MAY BE USED FOR CONNECTIONS TO MAINLINE SEWERS EXCEPT AS NOTED.
 - USE EXTRA STRENGTH PIPE. ALL PIPE IS STANDARD DEPTH EXCEPT AS NOTED.
 - VITRIFIED CLAY PIPE JOINTS SHALL BE TYPE "D", "F", OR "G" PER STANDARD SPECIFICATIONS SECTION 208-2.
 - IF A POWER POLE IS WITHIN THREE FEET OF THE SEWER, THE SEWER SHALL BE ENCASED, PER S-23, TWO FEET ON EACH SIDE FROM THE POINT OF INTERFERENCE.
 - IF DURING THE COURSE OF CONSTRUCTION IT IS DETERMINED THAT THERE IS LESS THAN FOUR FEET OF COVER OVER THE TOP OF A MAIN LINE OR HOUSE LATERAL V.C.P. SEWER WHICH IS NOT INDICATED ON THE PLANS, THE PIPE SHALL BE ENCASED PER S-23, UNLESS OTHERWISE APPROVED BY THE COUNTY ENGINEER.
 - RESURFACE ALL TRENCHES WITHIN PAVED AREAS TO MEET L.A. COUNTY ROAD DEPT. OR CALIFORNIA STATE HIGHWAY REQUIREMENTS IN ACCORDANCE WITH PERMITS.
 - SEWERS TO BE TESTED FOR LEAKAGE PER SECTION 306-3.2.7 OF THE STANDARD SPECIFICATIONS.
 - REFER TO SECTION 7-19.4.1 OF THE STANDARD SPECIFICATIONS, REGARDING SAFETY ORDERS.
 - ALL JOINTS BETWEEN CAST IRON PIPE AND VITRIFIED CLAY PIPE SHALL BE MADE WITH A RUBBER SLEEVE JOINT, TYPE "C" OR "D", WITH BUSHING IF NECESSARY PER STANDARD SPECIFICATIONS, SECTION 208-2.

County Sanitation Districts shall be notified prior to the following so that required inspection can be made (Phone 577-1025 - 426-6066)

Acceptance of the project.

No connections for the disposal of industrial wastes shall be made to sewers shown on these drawings without written permission from the Chief Engineer and General Manager of the County Sanitation Districts.

LEGEND

MINIMUM PUBLIC SAFETY REQUIREMENTS	S-1
BRICK MANHOLE	S-2
NON-REINFORCED PRECAST CONCRETE MANHOLE	S-3
REINFORCED PRECAST CONCRETE MANHOLE	S-4
MANHOLE FRAME AND COVER	S-5
STANDARD MANHOLE STEP	S-6
SEWER PIPE	S-7
SEWER PIPE	S-8
SEWER PIPE	S-9
SEWER PIPE	S-10
SEWER PIPE	S-11
SEWER PIPE	S-12
SEWER PIPE	S-13
SEWER PIPE	S-14
SEWER PIPE	S-15
SEWER PIPE	S-16
SEWER PIPE	S-17
SEWER PIPE	S-18
SEWER PIPE	S-19
SEWER PIPE	S-20
SEWER PIPE	S-21
SEWER PIPE	S-22
SEWER PIPE	S-23
SEWER PIPE	S-24
SEWER PIPE	S-25
SEWER PIPE	S-26
SEWER PIPE	S-27
SEWER PIPE	S-28
SEWER PIPE	S-29
SEWER PIPE	S-30
SEWER PIPE	S-31
SEWER PIPE	S-32
SEWER PIPE	S-33
SEWER PIPE	S-34
SEWER PIPE	S-35
SEWER PIPE	S-36
SEWER PIPE	S-37
SEWER PIPE	S-38
SEWER PIPE	S-39
SEWER PIPE	S-40
SEWER PIPE	S-41
SEWER PIPE	S-42
SEWER PIPE	S-43
SEWER PIPE	S-44
SEWER PIPE	S-45
SEWER PIPE	S-46
SEWER PIPE	S-47
SEWER PIPE	S-48
SEWER PIPE	S-49
SEWER PIPE	S-50
SEWER PIPE	S-51
SEWER PIPE	S-52
SEWER PIPE	S-53
SEWER PIPE	S-54
SEWER PIPE	S-55
SEWER PIPE	S-56
SEWER PIPE	S-57
SEWER PIPE	S-58
SEWER PIPE	S-59
SEWER PIPE	S-60
SEWER PIPE	S-61
SEWER PIPE	S-62
SEWER PIPE	S-63
SEWER PIPE	S-64
SEWER PIPE	S-65
SEWER PIPE	S-66
SEWER PIPE	S-67
SEWER PIPE	S-68
SEWER PIPE	S-69
SEWER PIPE	S-70
SEWER PIPE	S-71
SEWER PIPE	S-72
SEWER PIPE	S-73
SEWER PIPE	S-74
SEWER PIPE	S-75
SEWER PIPE	S-76
SEWER PIPE	S-77
SEWER PIPE	S-78
SEWER PIPE	S-79
SEWER PIPE	S-80
SEWER PIPE	S-81
SEWER PIPE	S-82
SEWER PIPE	S-83
SEWER PIPE	S-84
SEWER PIPE	S-85
SEWER PIPE	S-86
SEWER PIPE	S-87
SEWER PIPE	S-88
SEWER PIPE	S-89
SEWER PIPE	S-90
SEWER PIPE	S-91
SEWER PIPE	S-92
SEWER PIPE	S-93
SEWER PIPE	S-94
SEWER PIPE	S-95
SEWER PIPE	S-96
SEWER PIPE	S-97
SEWER PIPE	S-98
SEWER PIPE	S-99
SEWER PIPE	S-100

COLLECT CHARGES AS INDICATED

