

# CASH CONTRACT NO. 8301

## SANITARY SEWERS, PUMP STATION AND FORCE MAIN

TO BE CONSTRUCTED FOR

## EL MONTE AIRPORT

SHEET 31 OF 31 SHEETS

SCALE: AS SHOWN W.S. 46 JAN 1973

COUNTY OF LOS ANGELES, CALIFORNIA  
HARVEY T. BRANDT COUNTY ENGINEER

APPROVED D. J. M. Con 4-5-73  
ASSISTANT SANITATION DIVISION ENGINEER DATE

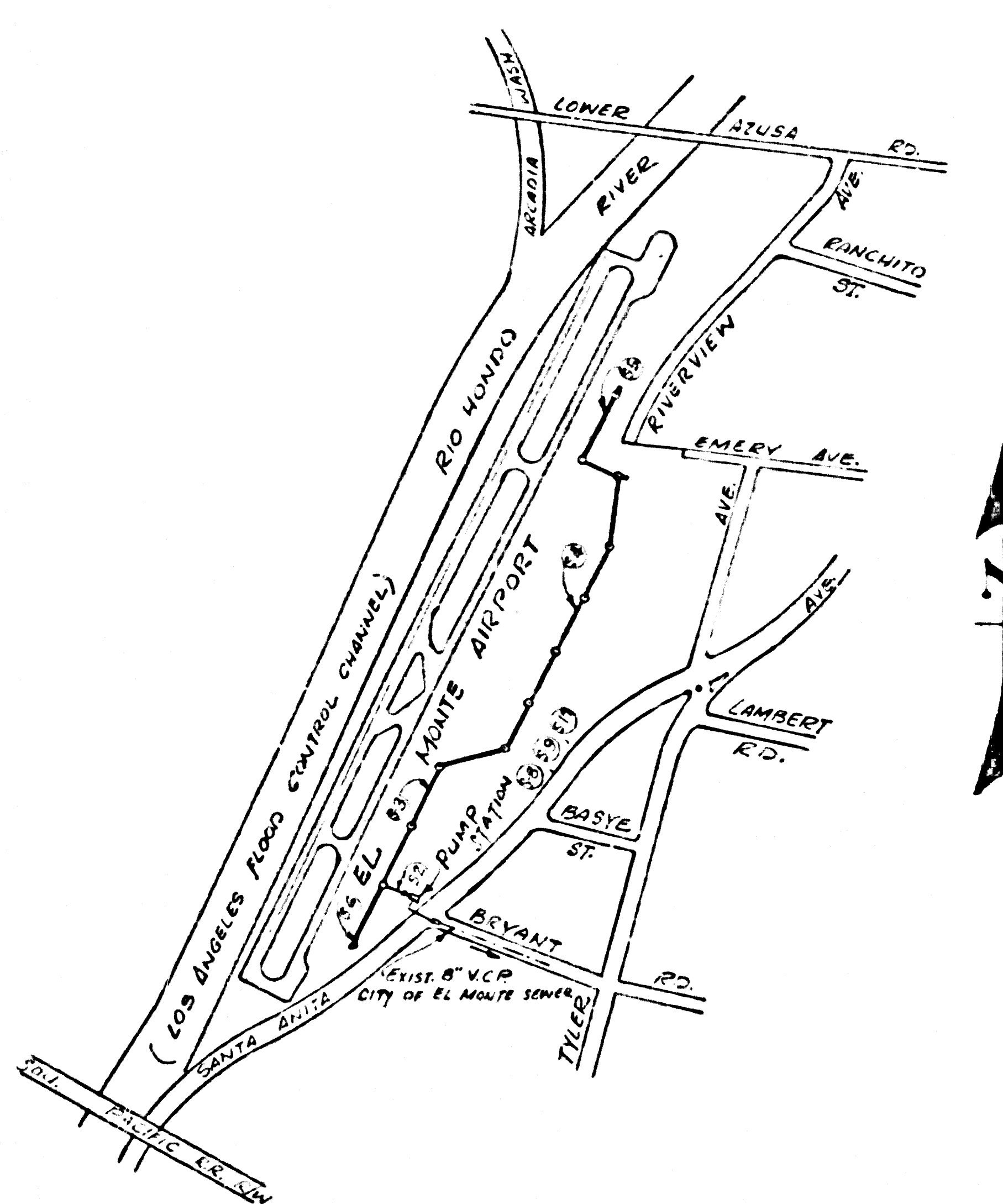
DESIGNED R. J. Anderson 3-7-73  
CIVIL ENGINEER E.C.E. 17418 DATE

JOHN O. PARKHURST, CHIEF ENGINEER, SAN. DISTRICT 15

APPROVED J. O. Parkhurst 4-12-73  
OFFICE ENGINEER DATE

GLENN F. WELCH, DIRECTOR OF PUBLIC SERVICE, CITY OF EL MONTE

APPROVED Glenn F. Welch 4/10/73  
DATE



**INDEX MAP**  
**EL MONTE AIRPORT**  
**C.C. 8301**  
W.S. 46 Scale: 1"=600'

**LEGEND**  
EXISTING SANITARY SEWERS SHOWN THIS: ———→  
PROPOSED SANITARY SEWERS SHOWN THIS: - - - - -→  
PLAN AND PROFILE SHEET NO. SHOWN THIS: ( )

B.M. #10 EL. 289.890  
BT. SPK. IN N.W. COR. OF CONC. SLAB ON N. SIDE OF CORR. MET. HANGAR 315' N. OF LA 187 RT. AVE. ENTRANCE. F.B. 3297-88

### CONSTRUCTION NOTES:

1. WORK SHALL BE CONSTRUCTED ACCORDING TO STANDARD SPECS. FOR PUBLIC WORKS CONSTRUCTION (970 EDITION WITH 1971 & 1972 SUPPLEMENTS) AND COUNTY ENGINEER SPECIAL PROVISIONS FOR THE CONSTRUCTION OF SANITARY SEWERS DATED APRIL 10, 1972 AND SHALL BE PROSECUTED ONLY IN THE PRESENCE OF THE COUNTY ENGINEER.
2. THE CONTRACTOR SHALL NOTIFY THE CONSTRUCTION DIVISION BY TEL MA 9-4747, EXT 81551, AT LEAST 24 HOURS BEFORE STARTING ANY WORK UNDER THIS PROJECT.
3. WYE OR TEE BRANCHES MAY BE USED FOR CONNECTIONS TO MAIN LINE SEWER, EXCEPT AS NOTED.
4. ALL STRUCTURES SHALL BE EITHER BRICK MANHOLES PER S-3 OR PRECAST CONCRETE MANHOLES PER S-36, EXCEPT AS NOTED.
5. VITRIFIED CLAY PIPE JOINTS SHALL BE TYPE "D", "H", OR "G" PER STANDARD SPECS. SEC. 208-2.
6. IF A POWER POLE IS WITHIN 3 FT. OF THE SEWER, THE SEWER SHALL BE ENCASED PER S-23, CASE I, 2 FT. ON EACH SIDE FROM THE POINT OF INTERFERENCE.
7. IF DURING THE COURSE OF CONSTRUCTION IT IS DETERMINED THAT THERE IS LESS THAN 4 FT. OF COVER OVER THE TOP MAIN LINE OR HOUSE LATERAL V.C.P. SEWER WHICH IS NOT INDICATED ON THE PLANS, THE PIPE SHALL BE ENCASED PER S-23, CASE I, UNLESS OTHERWISE APPROVED BY THE COUNTY ENGINEER.
8. SEWERS TO BE TESTED FOR LEAKAGE PER SEC. 806-2.3.7 OF THE STANDARD SPECS. AND SPECIAL PROVISIONS.
9. RESURFACE ALL TRENCHES WITHIN CITY STREET TO MEET CITY OF EL MONTE REQUIREMENTS IN ACCORDANCE WITH PERMIT.
10. THE CONTRACTOR SHALL OBTAIN A CONSTRUCTION PERMIT FROM THE CITY OF EL MONTE FOR THE WORK IN THAT PORTION IN SANTA ANITA AVENUE AND PAY REQUIRED FEES.

County Sanitation Districts shall be advised prior to the following so that required inspection can be made (Code 397-1025 - 638-1161)

ACCEPTANCE OF THE PROJECT

No construction for the El Monte Airport Industrial rates shall be made or shown on these drawings without written permission from the Chief Engineer and General Manager of the County Sanitation Districts.

### GENERAL NOTES:

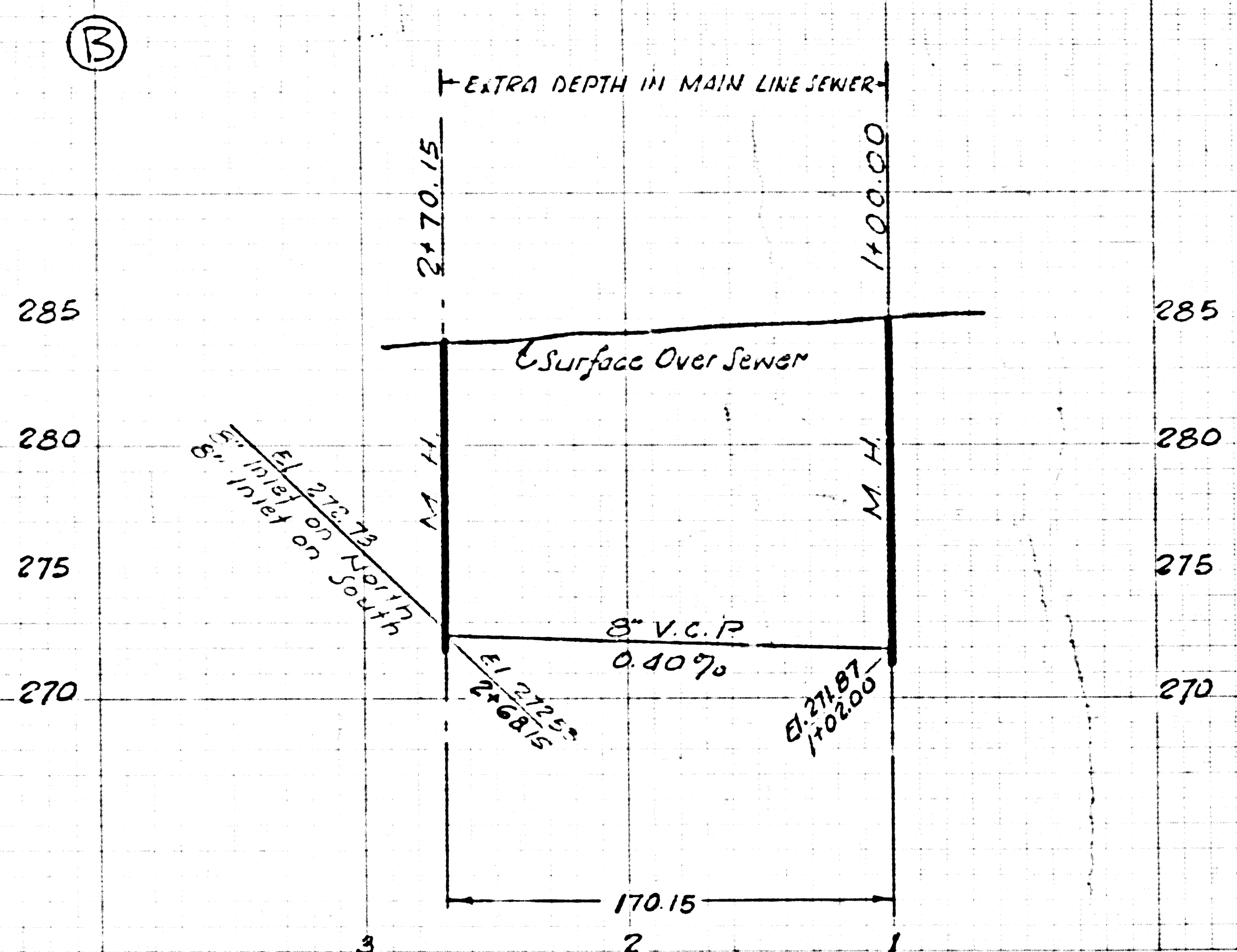
1. ELEVATIONS ARE IN FEET ABOVE U.S.C. & G.S. SEA LEVEL DATUM OF 1929.
2. THIS DRAWING AND THE DATA HEREON ARE MADE A PART OF THE SPECIFICATIONS.
3. THE EXISTENCE AND LOCATION OF ANY UNDERGROUND UTILITY PIPE OR STRUCTURES SHOWN ON THESE PLANS ARE OBTAINED BY A SEARCH OF THE AVAILABLE RECORDS. TO THE BEST OF OUR KNOWLEDGE THERE ARE NO EXISTING UTILITIES EXCEPT AS SHOWN.
4. REFER TO SECTION 7-10-4.1 OF STANDARD SPECS. REGARDING SAFETY ORDERS.
5. ALL PIPE IS STANDARD DEPTH EXTRA STRENGTH VITRIFIED CLAY PIPE, EXCEPT AS NOTED.
6. NO REVISIONS SHALL BE MADE ON THESE PLANS WITHOUT THE APPROVAL OF THE COUNTY ENGINEER.

THE FOLLOWING LATEST REVISED STANDARD PLANS ON FILE IN THE OFFICE OF THE COUNTY ENGINEER SHALL APPLY IN THE CONSTRUCTION OF THIS PROJECT.

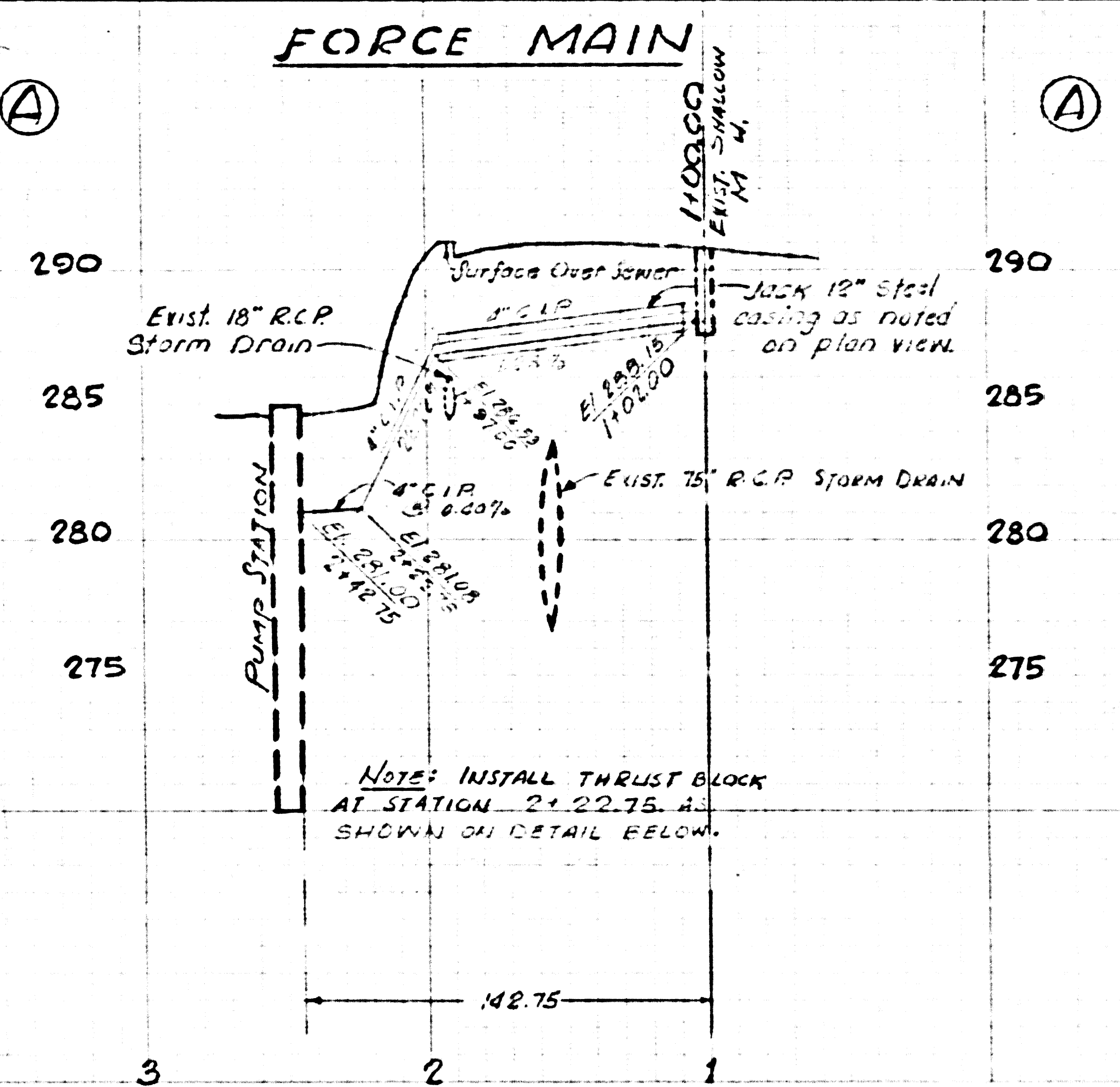
LEGEND	S-1
MINIMUM PUBLIC SAFETY REQUIREMENT	S-2
BRICK MANHOLE	S-3
STANDARD MANHOLE STEPS	S-7
BEDDING FOR SEWER PIPE	S-21
CRADLING AND ENCASEMENT	S-23
WYE OR TEE SUPPORT	S-26
ALLOWABLE TRENCH WIDTHS	S-33
LOCKING MANHOLE FRAME AND COVER	S-36
NON-REINFORCED PRECAST CONCRETE MANHOLE	S-36
BREAKING INTO EXIST. BRICK OR PRECAST CONC. MANHOLE	S-37
STOPPERS	S-30
JACKING PIPE	S-37

45239

DEPARTMENT OF THE COUNTY ENGINEER COUNTY OF LOS ANGELES	DATE 4-11-73	ELMONTE AIRPORT	SHEET NO. 7436.08
APPROVED	DESIGNED BY R. J. Anderson	PHASE II SANITARY SEWERS	CASH PROJECT 7436
CHECKED BY J. M.	DATE 4-11-73	TITLE SHEET	SHEET NO. S-1
DATE	DATE		OF SHEETS

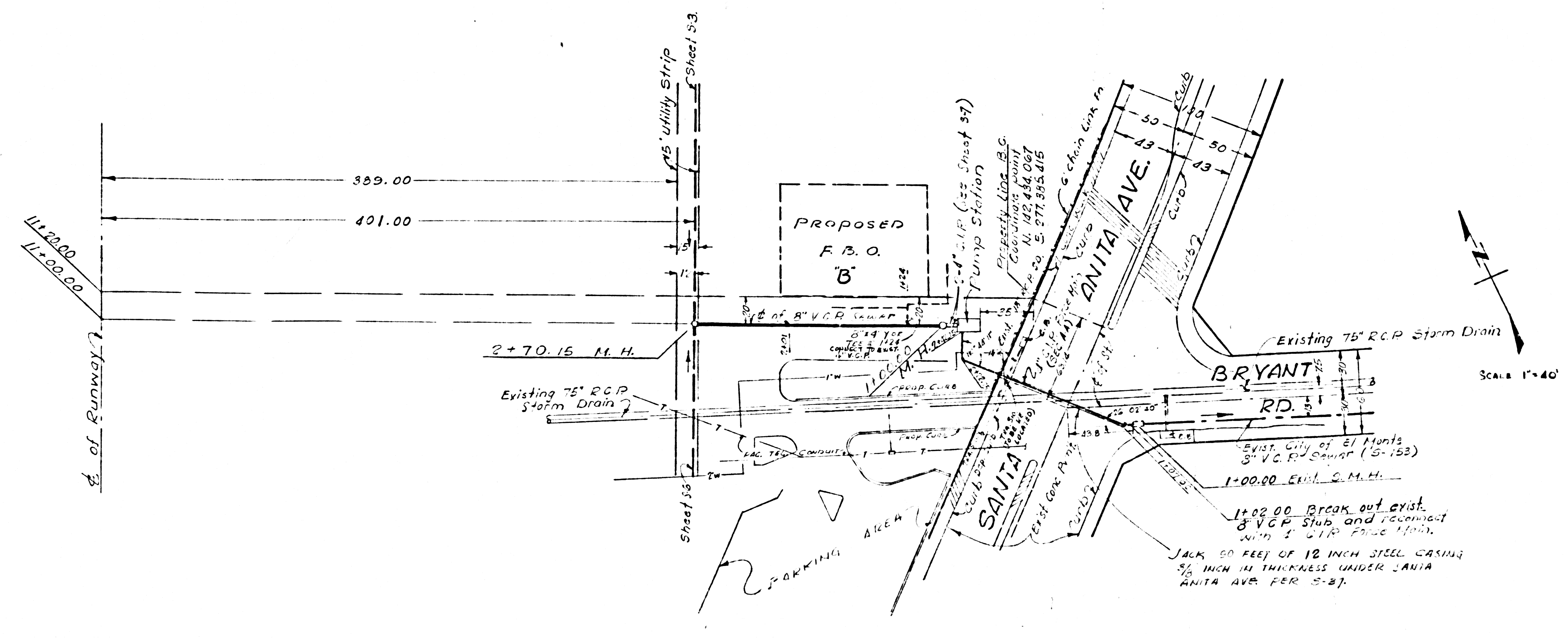
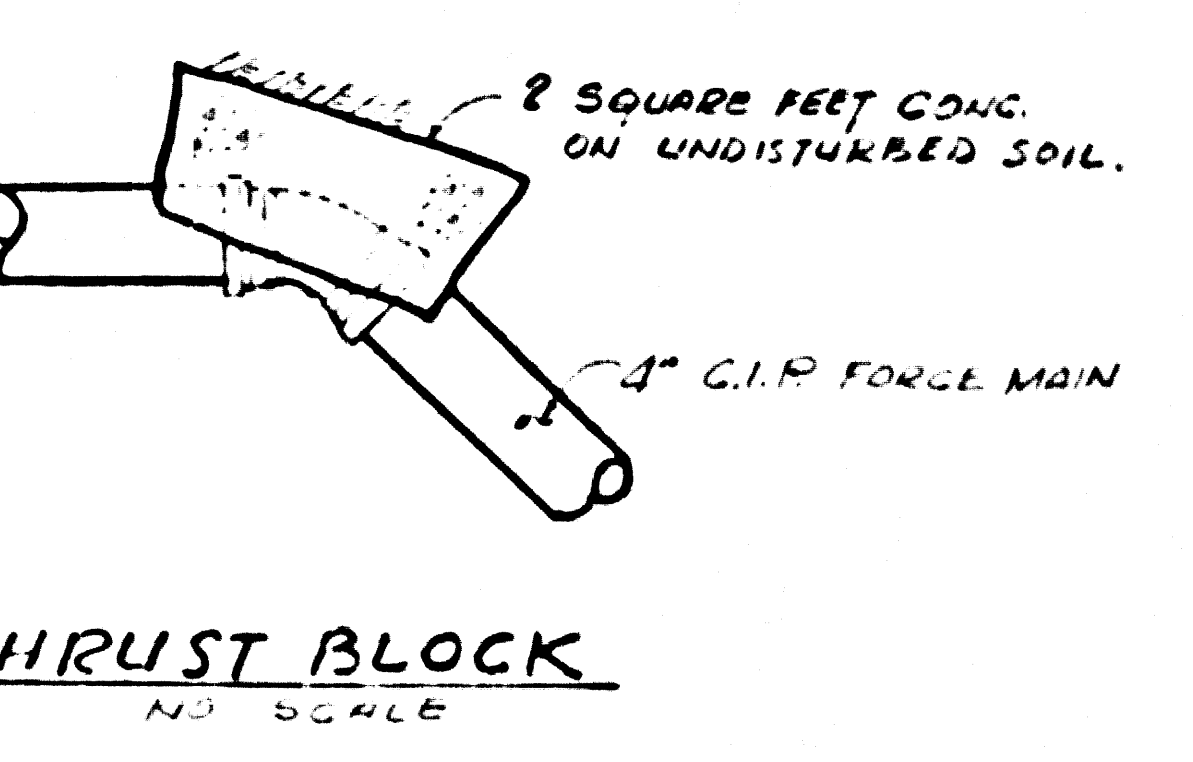


PROFILE SCALE  
 HORIZ. : 1" = 40'  
 VERT. : 1" = 4'



NOTE: INSTALL THRUST BLOCK  
 AT STATION 2+22.75 AS  
 SHOWN ON DETAIL BELOW.

NOTE: ISSUE NO PERMITS FOR  
 CONNECTION TO FORCE  
 MAIN.

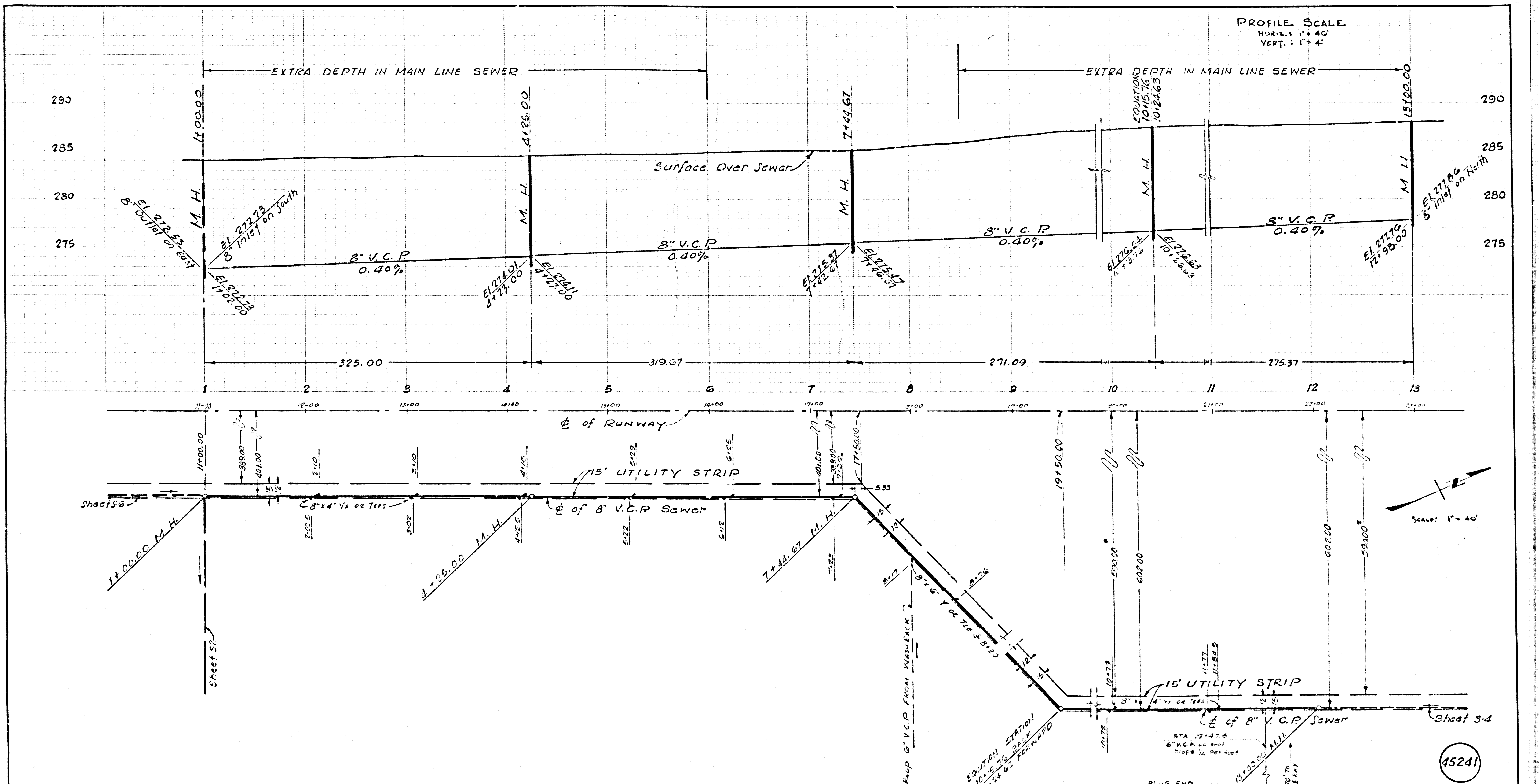


SCALE 1" = 40'

45240

DEPARTMENT OF THE COUNTY ENGINEER SHARVEY'S SANITARY COUNTY ENGINEER COUNTY OF LOS ANGELES	DATE OCT. 1978	ELMONTE AIRPORT	WORK ORDER 14700-3
	DESIGNED BY T.H.	PHASE II SANITARY SEWERS	CAPITAL PROJECT 7430
APPROVED:	CHECKED BY T.H.	GRAVITY AND FORCE MAIN	SHEET NO. S-2
DESIGN DIVISION	L.A. CO. NO.		OF SHEETS
	AS BUILT CORRECTIONS		

NOTE: CONTRACTOR SHALL VERIFY ALL DIMENSIONS  
 AND BE RESPONSIBLE FOR SAME.

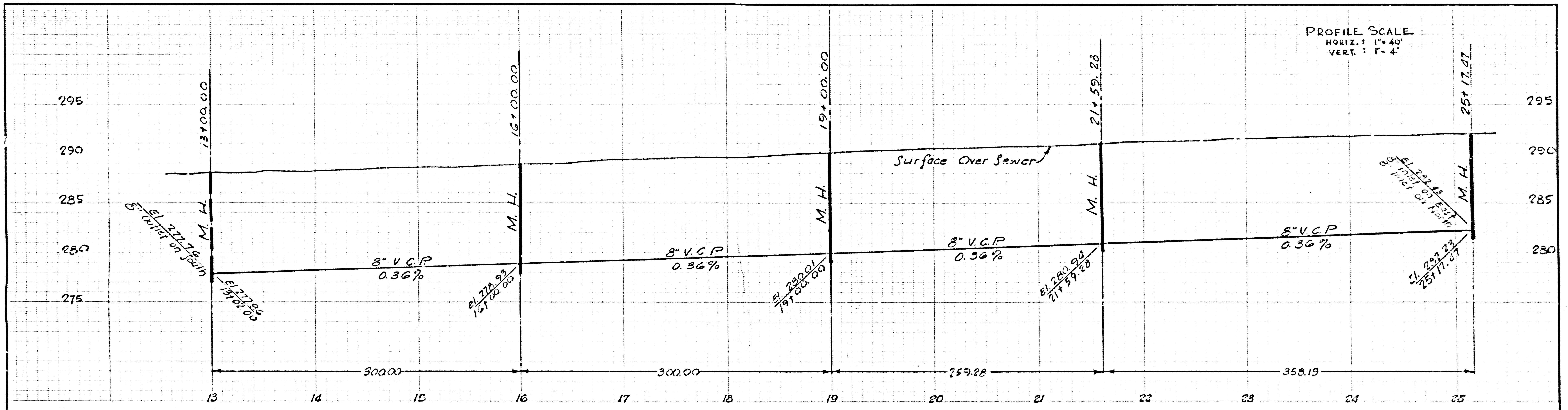


\* 15' UTILITY STRIP RELOCATED 20' WESTERLY DURING CONSTRUCTION. (INSPECTORS COPY OF THE CONSTRUCTION PLANS ON FILE IN DESIGN DIVISION) 10-5-78 TH.

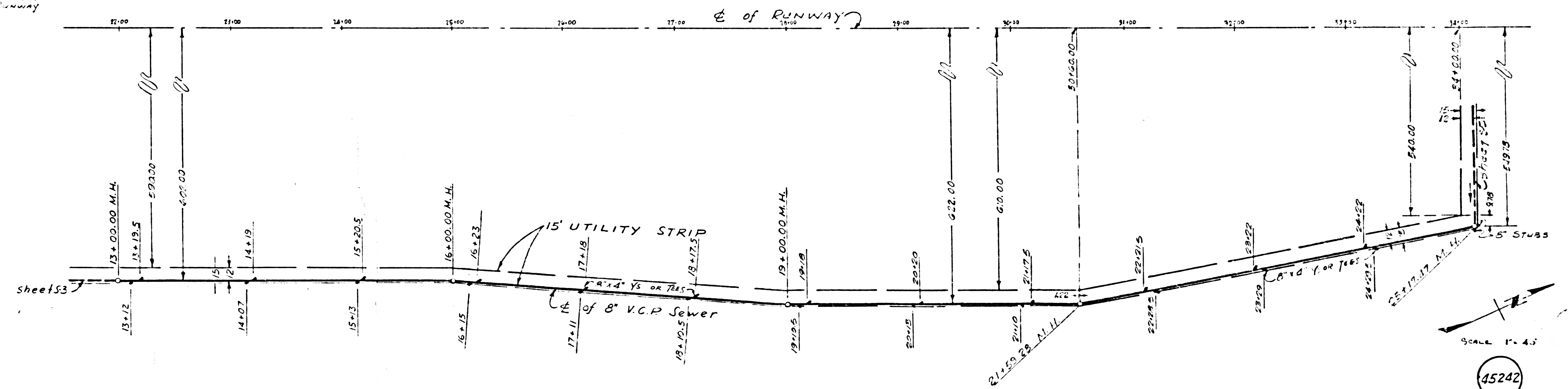
DEPARTMENT OF THE COUNTY ENGINEER ALMONTE AIRPORT	DATE: OCT. 1975	PROJECT NO.: 7-7200043
DESIGNED BY: [Signature]	DRAWN BY: [Signature]	WORK ORDER: 743-2-3
CHECKED BY: [Signature]	IN CHARGE: [Signature]	CAPITAL PROJECT: 743-2
APPROVED: [Signature]	DATE: [Signature]	SHEET NO.: S-3
DESIGN DIVISION		NO. SHEETS: 3

45241

NOTE: CONTRACTOR SHALL VERIFY ALL DIMENSIONS AND BE RESPONSIBLE FOR SAME.



Note:  
 13+00.00 & JEWEL STREET  
 = 22+01.34 & Runway



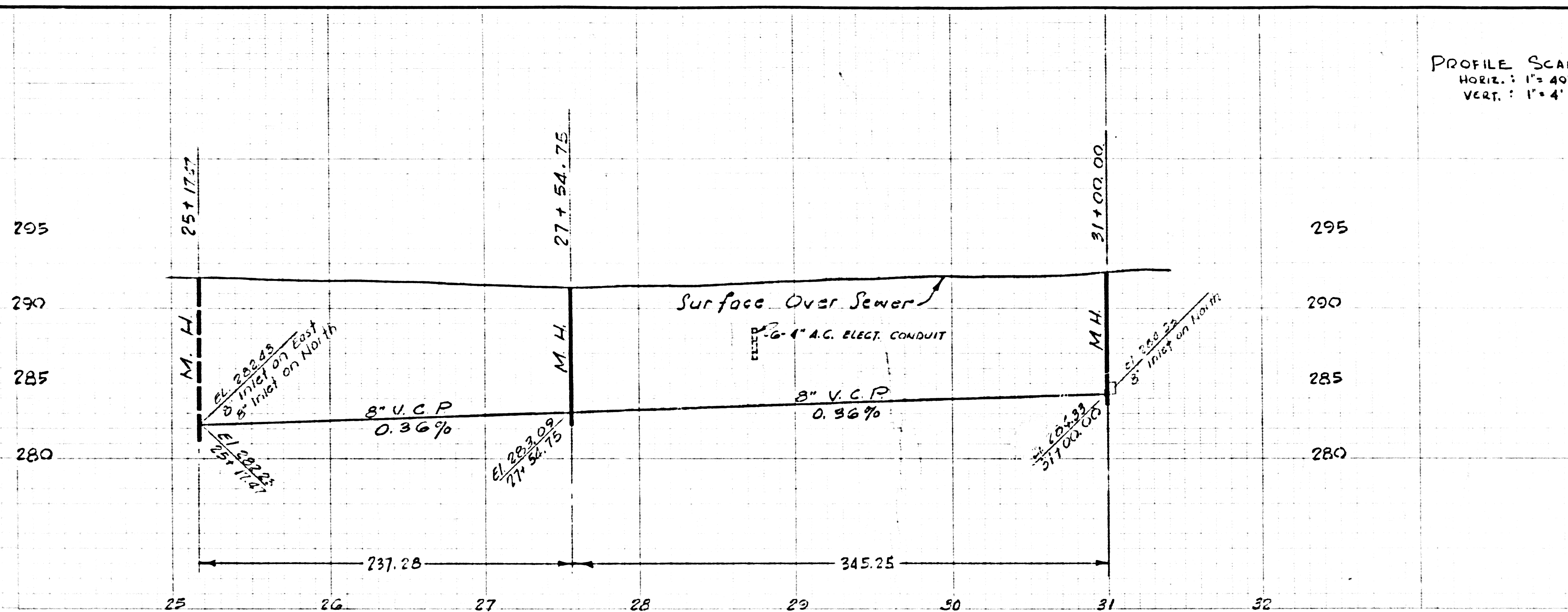
PROFILE SCALE  
 HORIZ.: 1" = 40'  
 VERT.: 1" = 4'

SCALE 1" = 40'

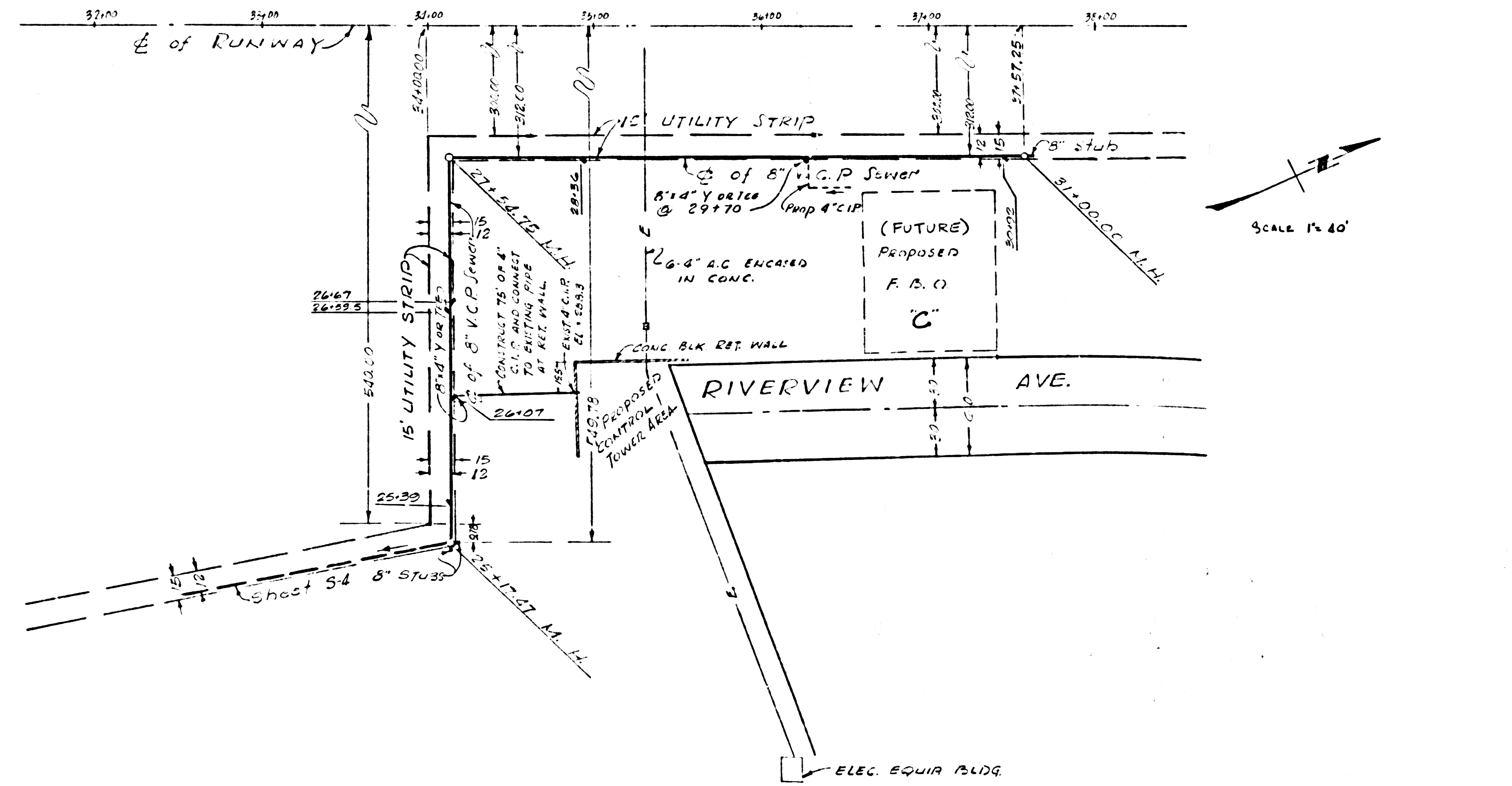
45242

DEPARTMENT OF THE COUNTY ENGINEER COUNTY OF LOS ANGELES	DATE	OCT. 1973	PROJECT NO.	EL MONTE AIRPORT	32200082
	DESIGNED BY	J. V.	WORK ORDER	PHASE II	7432
APPROVED:	CHECKED BY	L. A.	CAPITAL PROJECT	SANITARY SEWERS	7432
	DIVISION ENGINEER	L. A. DE. DE.	SHEET NO.	GRAVITY	S-4
DESIGN DIVISION	DATE				

NOTES CONTRACTOR SHALL VERIFY ALL DIMENSIONS AND BE RESPONSIBLE FOR SAME



PROFILE SCALE  
 HORIZ. : 1" = 40'  
 VERT. : 1" = 4'



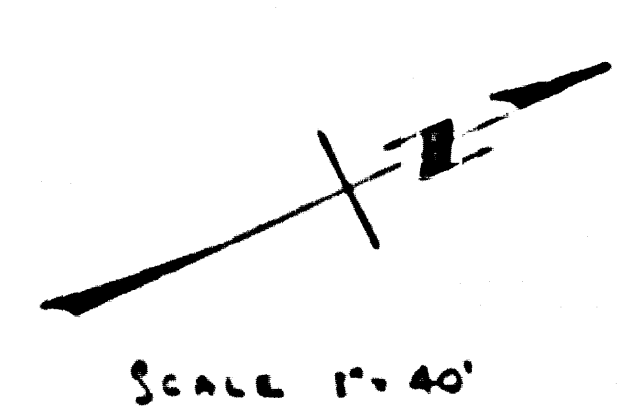
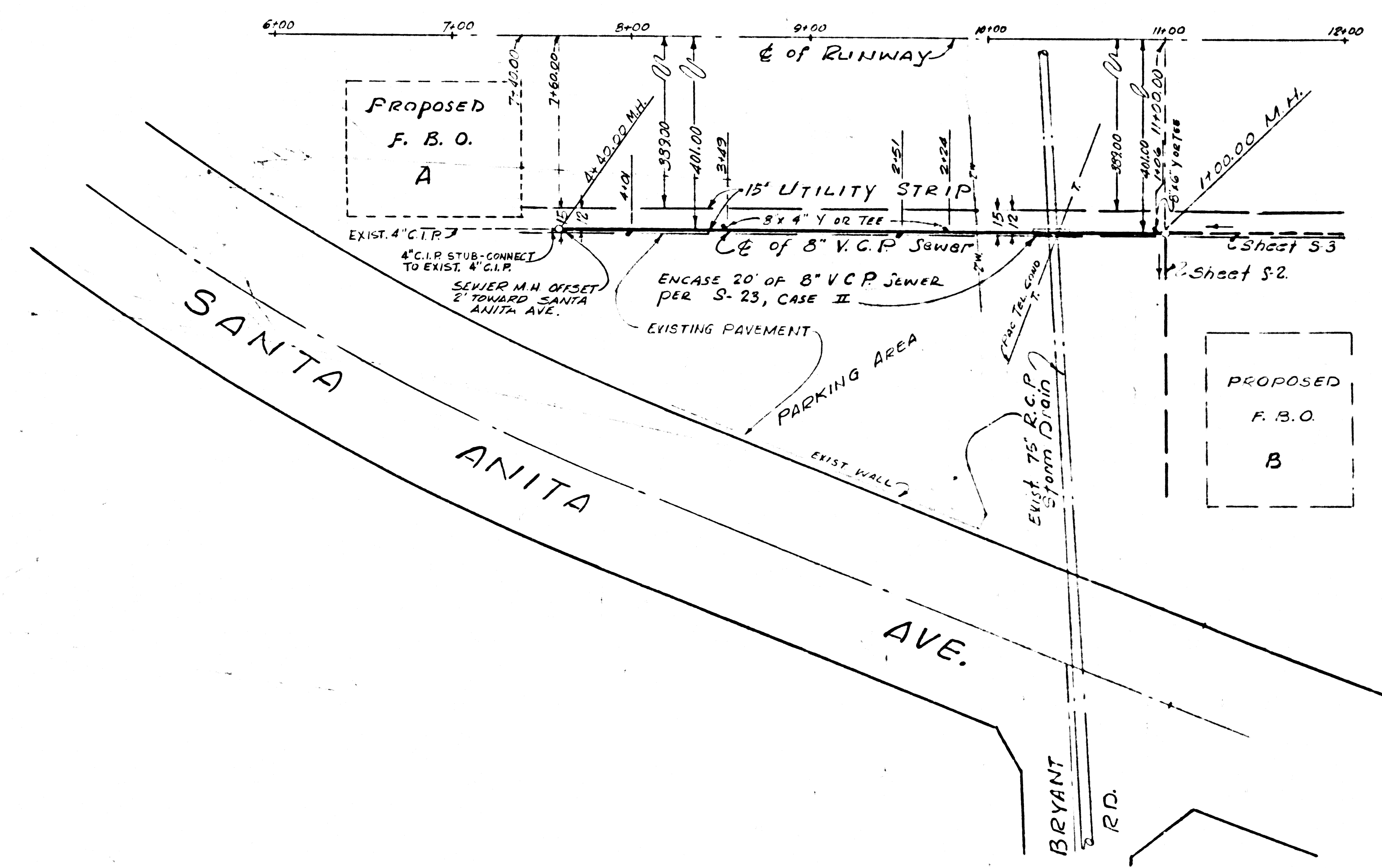
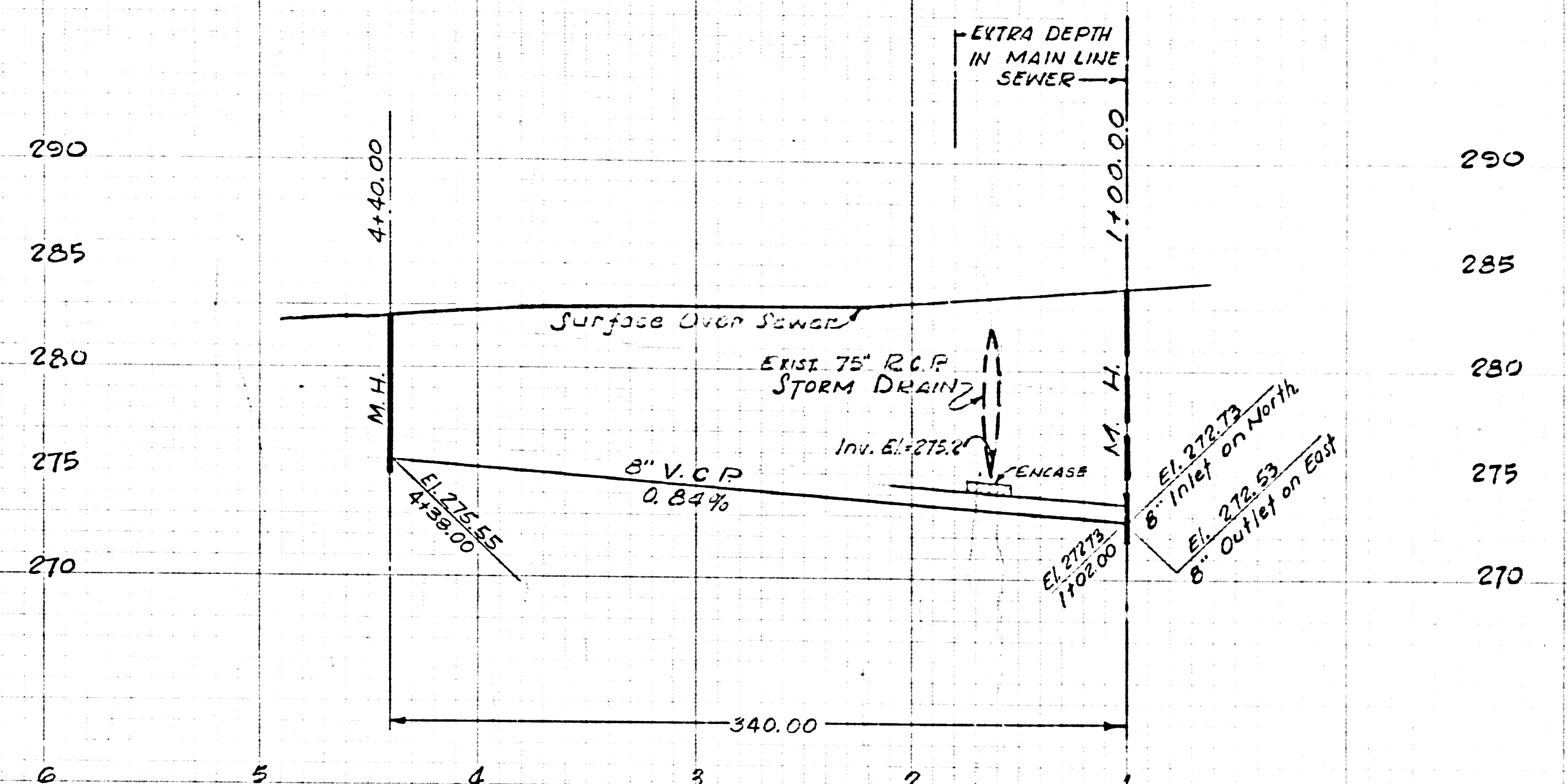
SCALE 1" = 40'

45243

DEPARTMENT OF THE COUNTY ENGINEER COUNTY OF LOS ANGELES	DATE OCT. 1972	EL MONTE AIRPORT	SPEC. NO. 32200043
DESIGNED BY DRAWN BY	CHECKED BY DATE	PHASE II SANITARY SEWERS	WORK SHEET 74 50 CAPITAL PROJECT S-5
APPROVED: DIVISION ENGINEER DESIGN DIVISION	DATE	GRAVITY	OF SHEETS

NOTE: CONTRACTOR SHALL VERIFY ALL DIMENSIONS AND BE RESPONSIBLE FOR SAME.  
 TYPED - CE 408 - 12/72

PROFILE SCALE  
 HORIZ. : 1"=40'  
 VERT. : 1"=4'

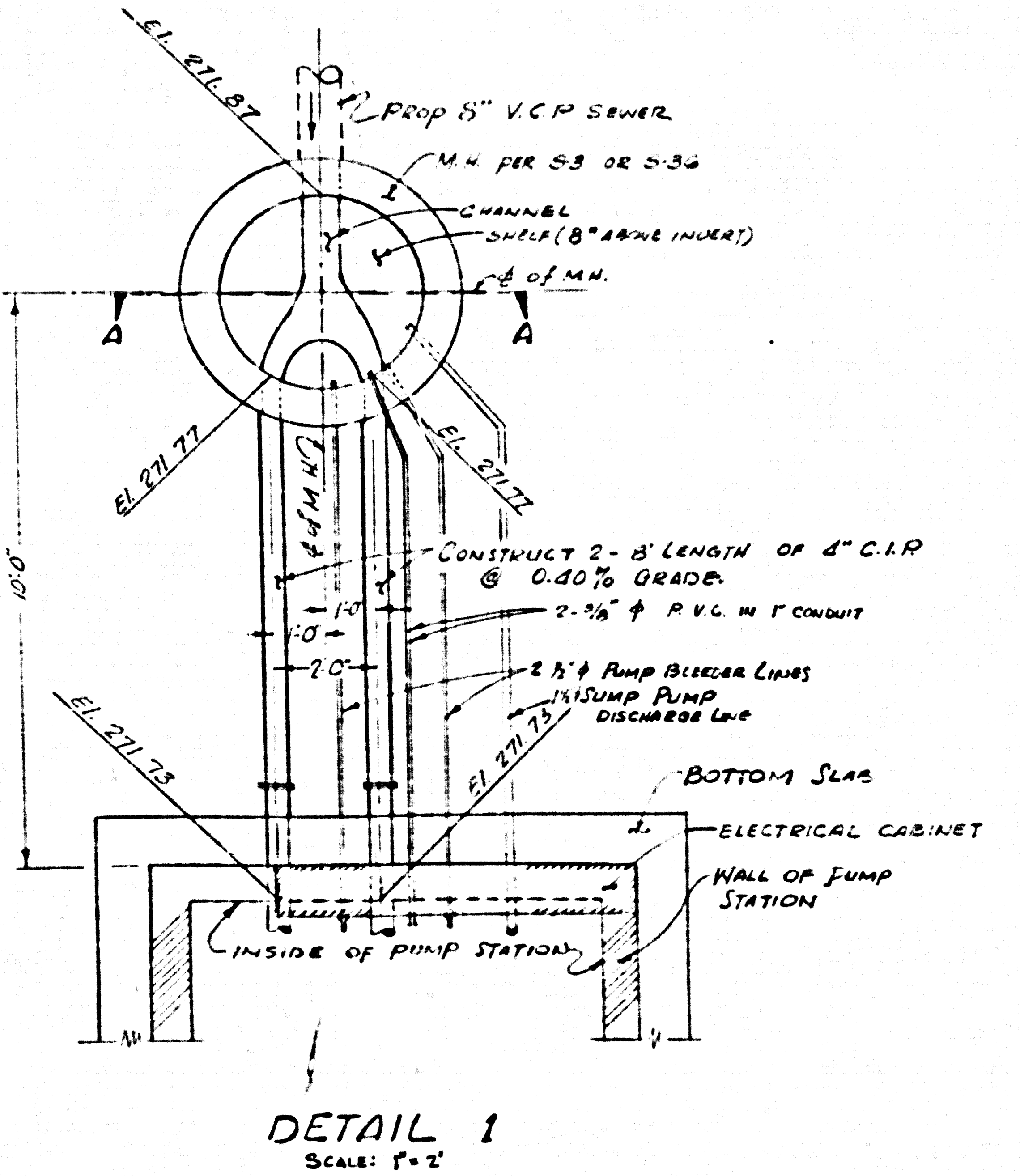
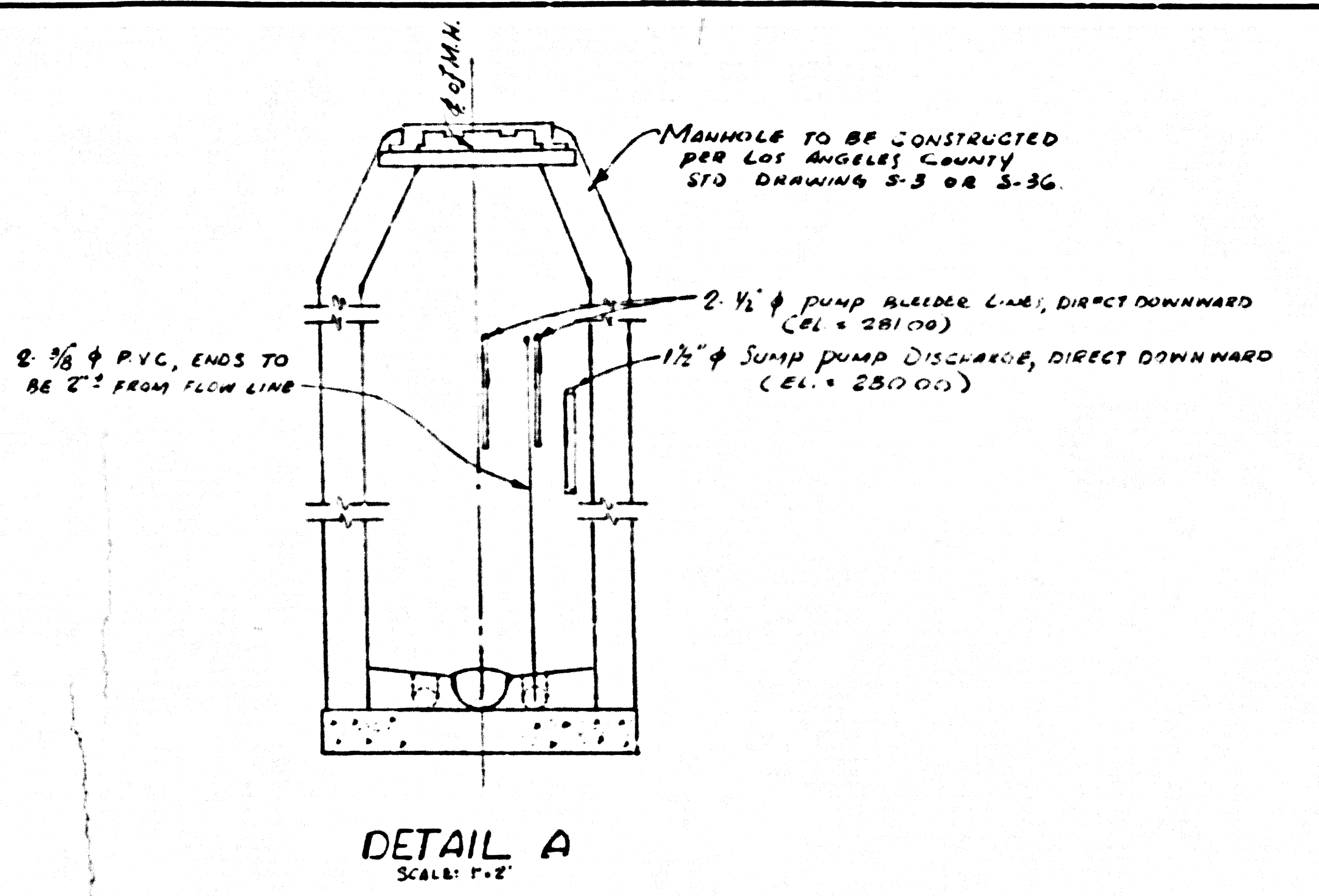
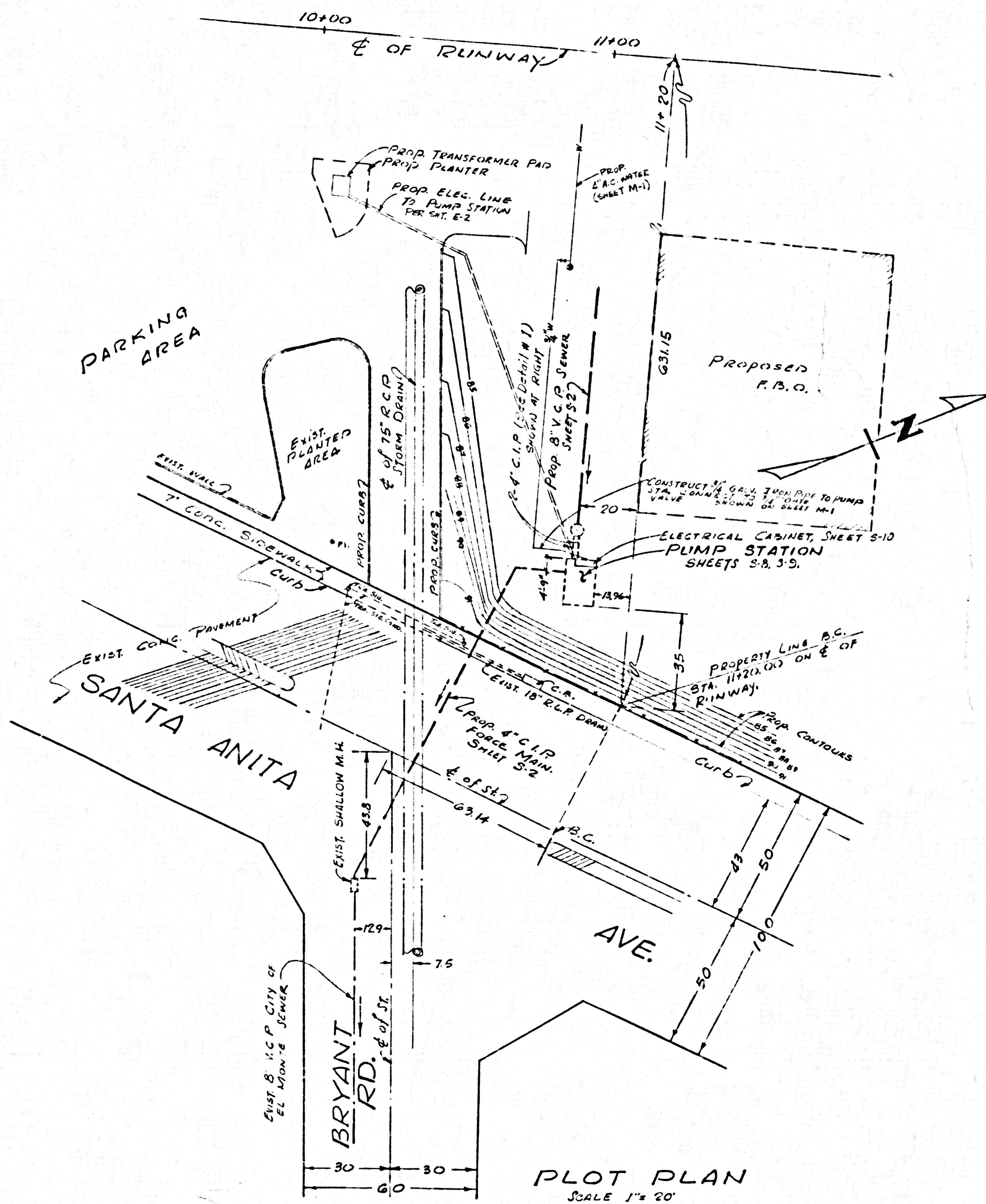


SCALE 1"=40'

45244

DEPARTMENT OF THE COUNTY ENGINEER COUNTY OF LOS ANGELES	DATE OCT., 1973	EL MONTE AIRPORT  PHASE II SANITARY SEWERS  GRAVITY	SHEET NO. 32200043
	DESIGNED BY J. H.		WORK ORDER 7450
APPROVED:  DIVISION ENGINEER DESIGN DIVISION	CHECKED BY J. H.	CAPITAL PROJECT 7450	SHEET NO. S-6

NOTE: CONTRACTOR SHALL VERIFY ALL DIMENSIONS AND BE RESPONSIBLE FOR SAME.



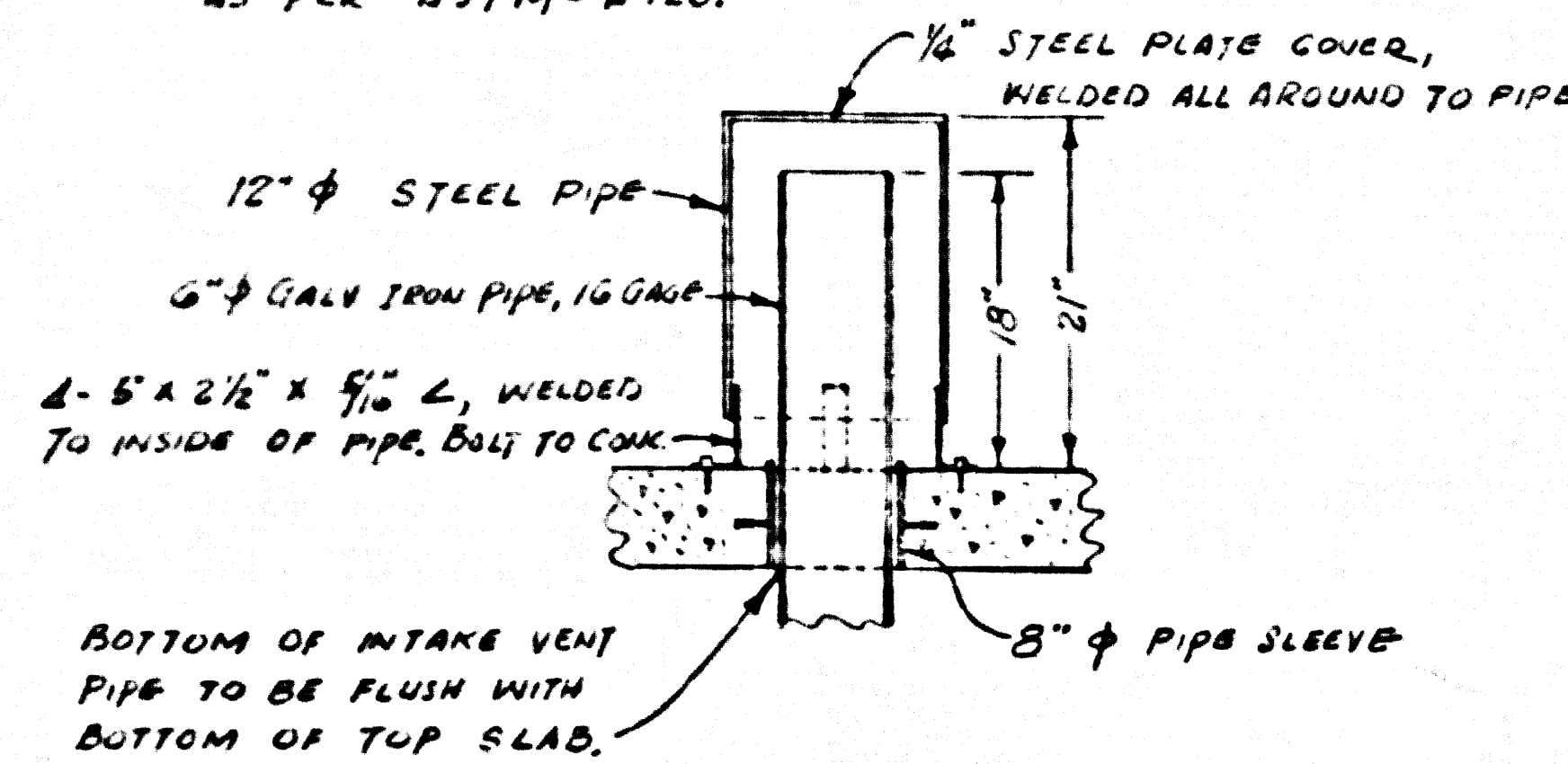
45245

DEPARTMENT OF THE COUNTY ENGINEER COUNTY OF LOS ANGELES	DATE: OCT, 1978	EL MONTE AIRPORT	SPEC. NO. 3220DD13
APPROVED: DESIGN DIVISION	DESIGNED BY: J.M.	PHASE II SANITARY SEWERS	WORK SHEET 74*09 CAPITAL PROJECT 74 32
	CHECKED BY: T.M.	LOCATION OF PUMP STATION	SHEET NO. S-7
	DATE: 10/10/78		

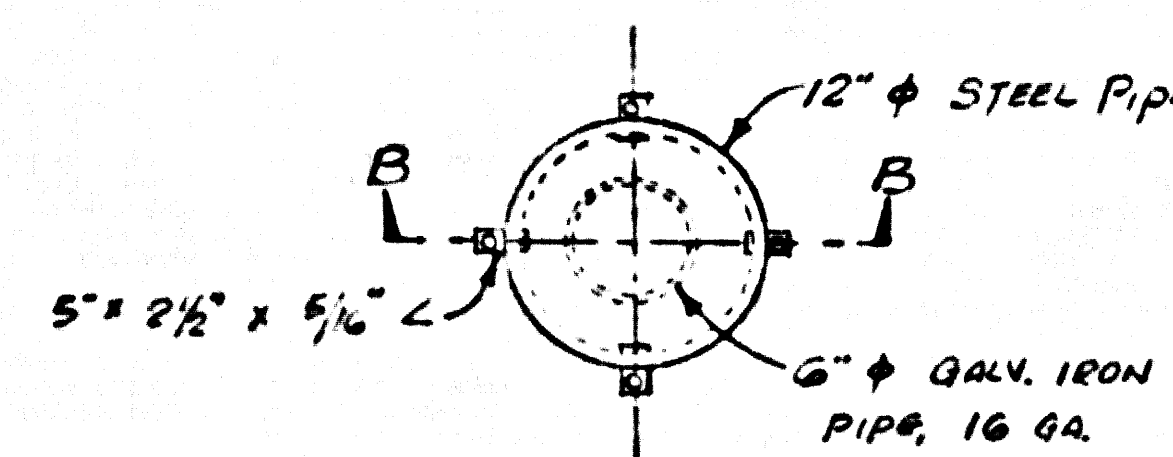




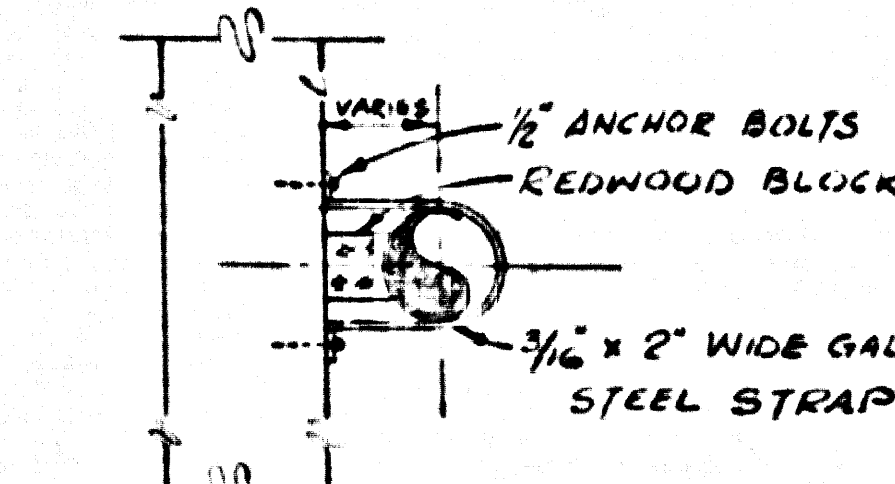
NOTE:  
VENT COVER TO BE HOT DIP GALVANIZED AFTER FABRICATION AS PER ASTM-A 123.



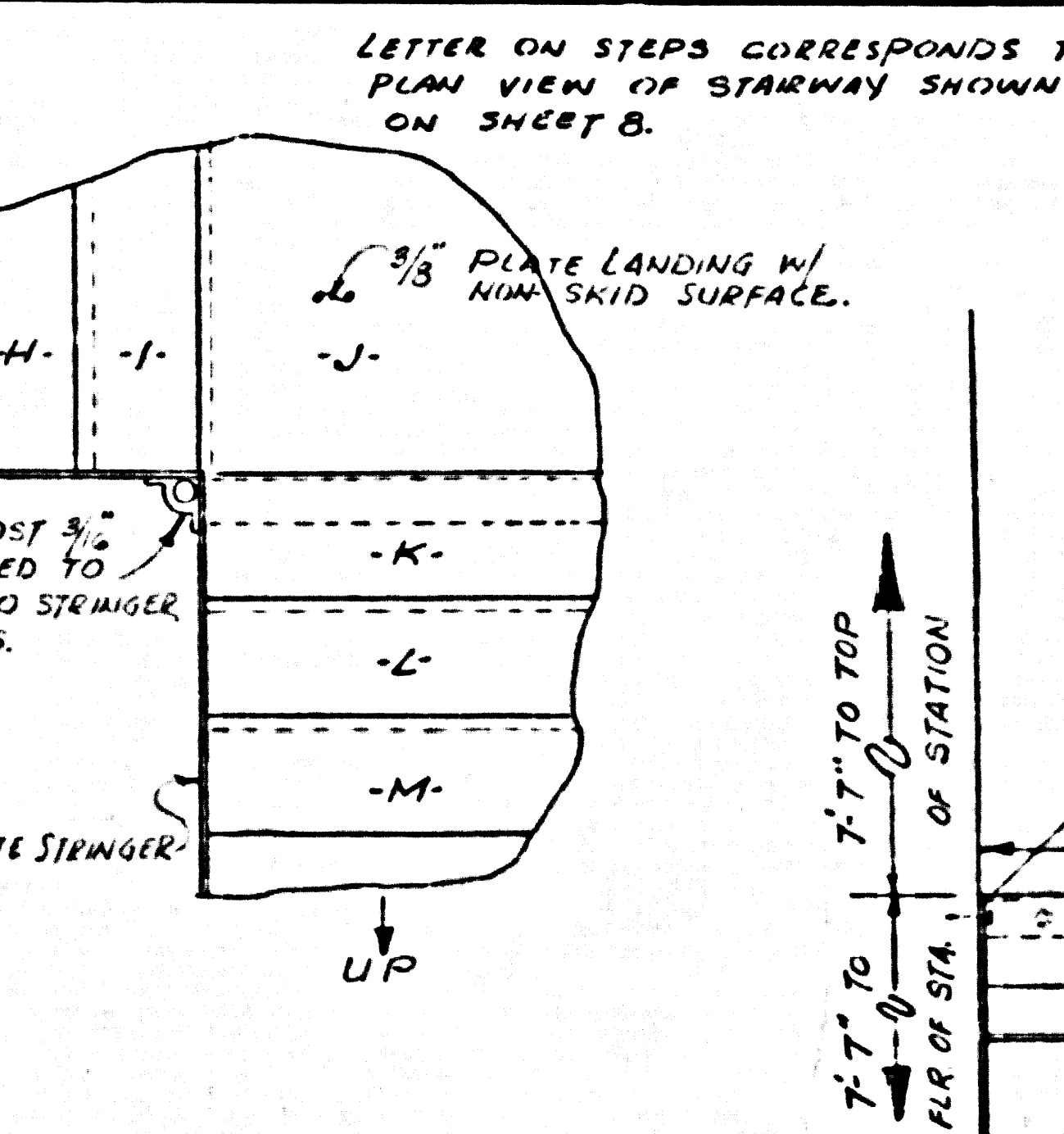
SEC. B-B



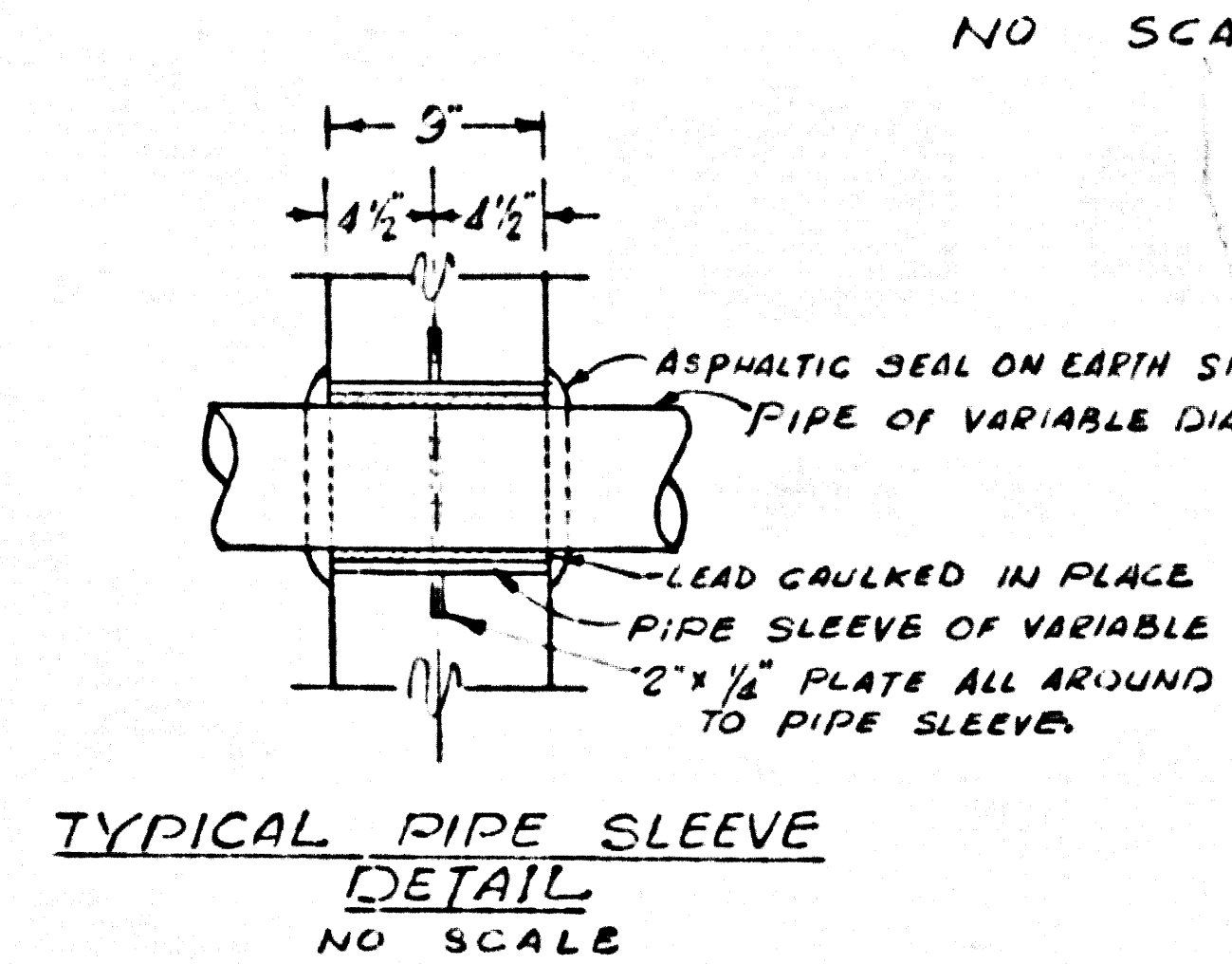
VENT COVER  
NO SCALE



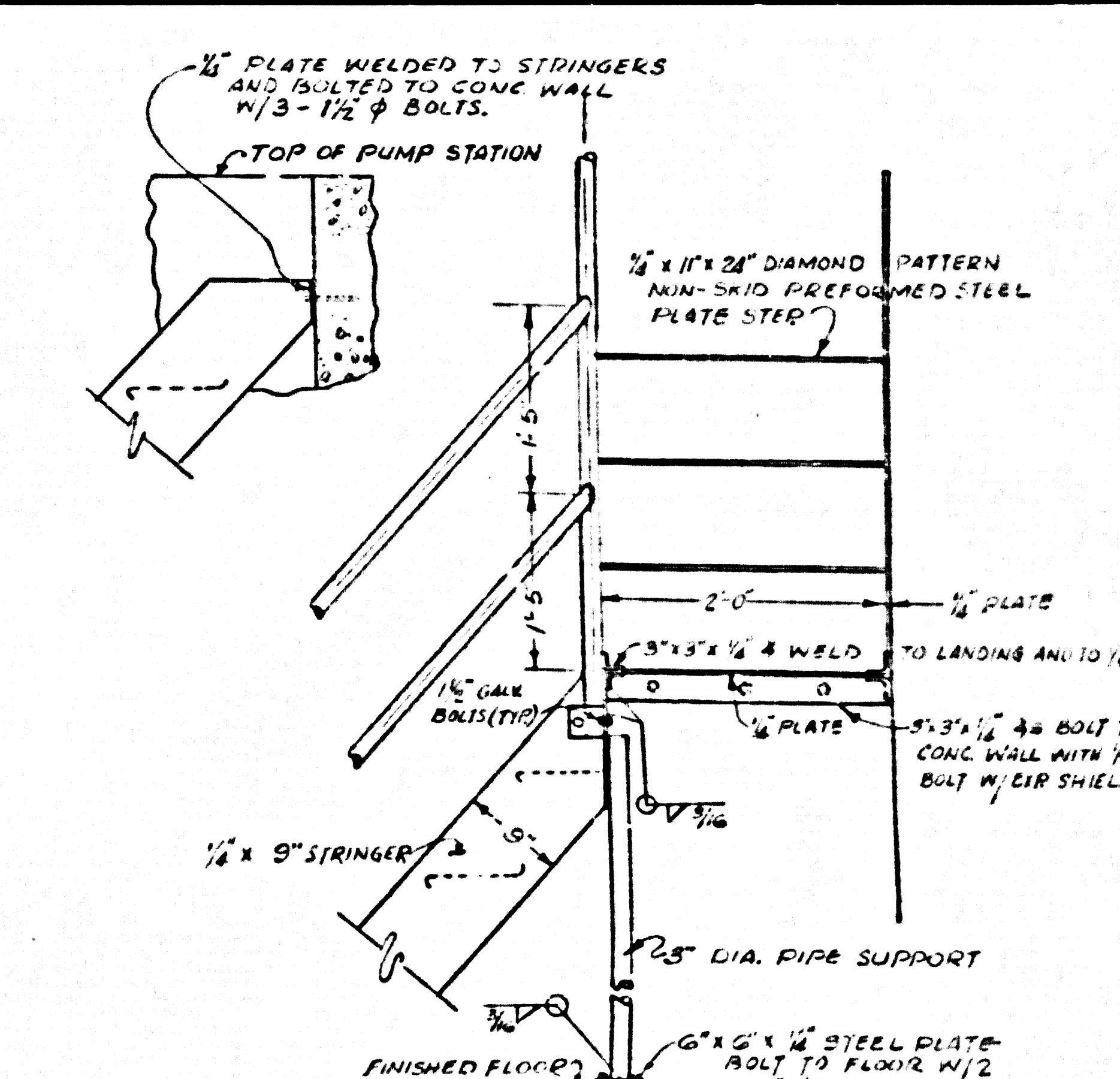
TYPICAL VENT PIPE STRAP  
NO SCALE



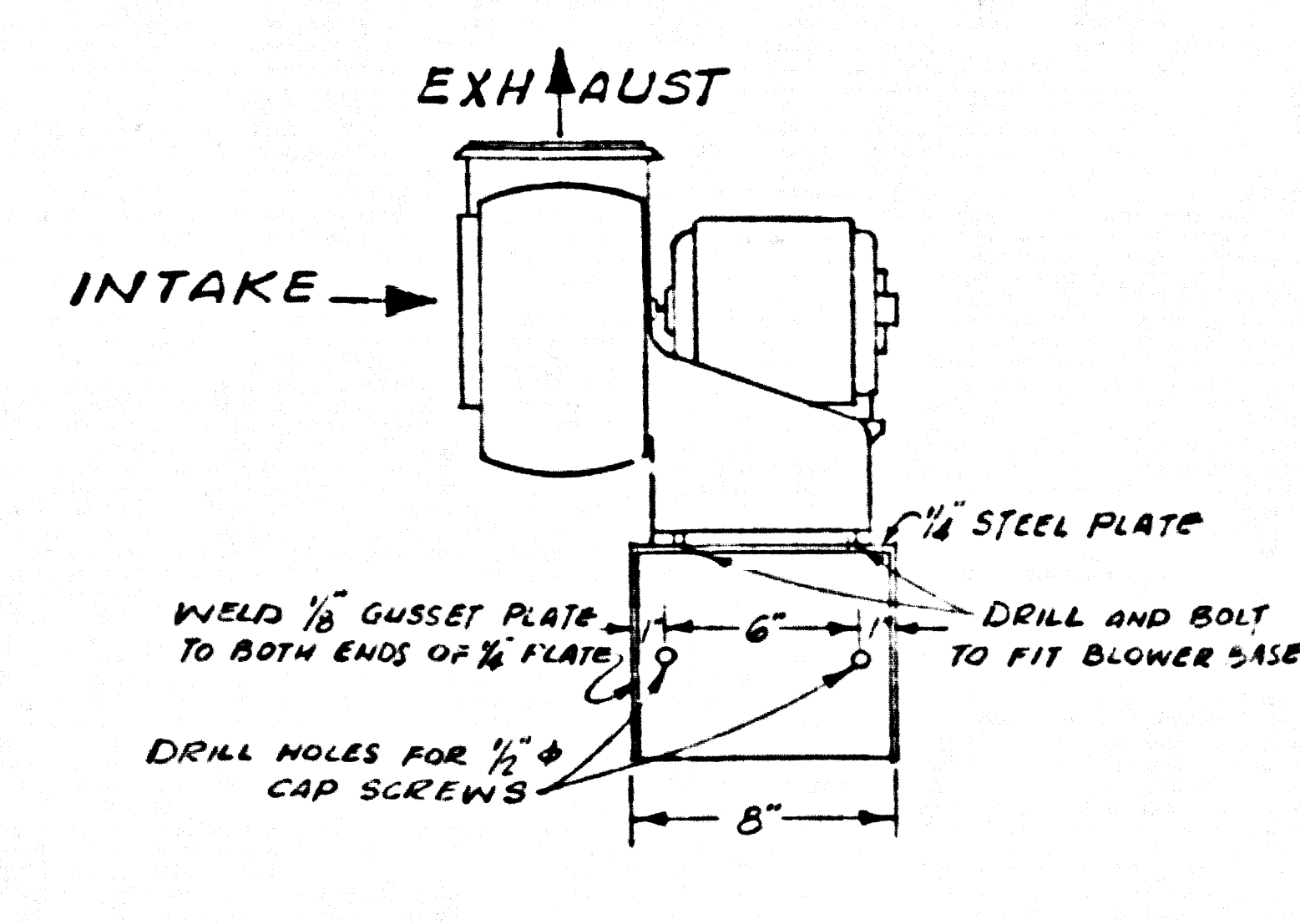
STAIRWAY DETAILS



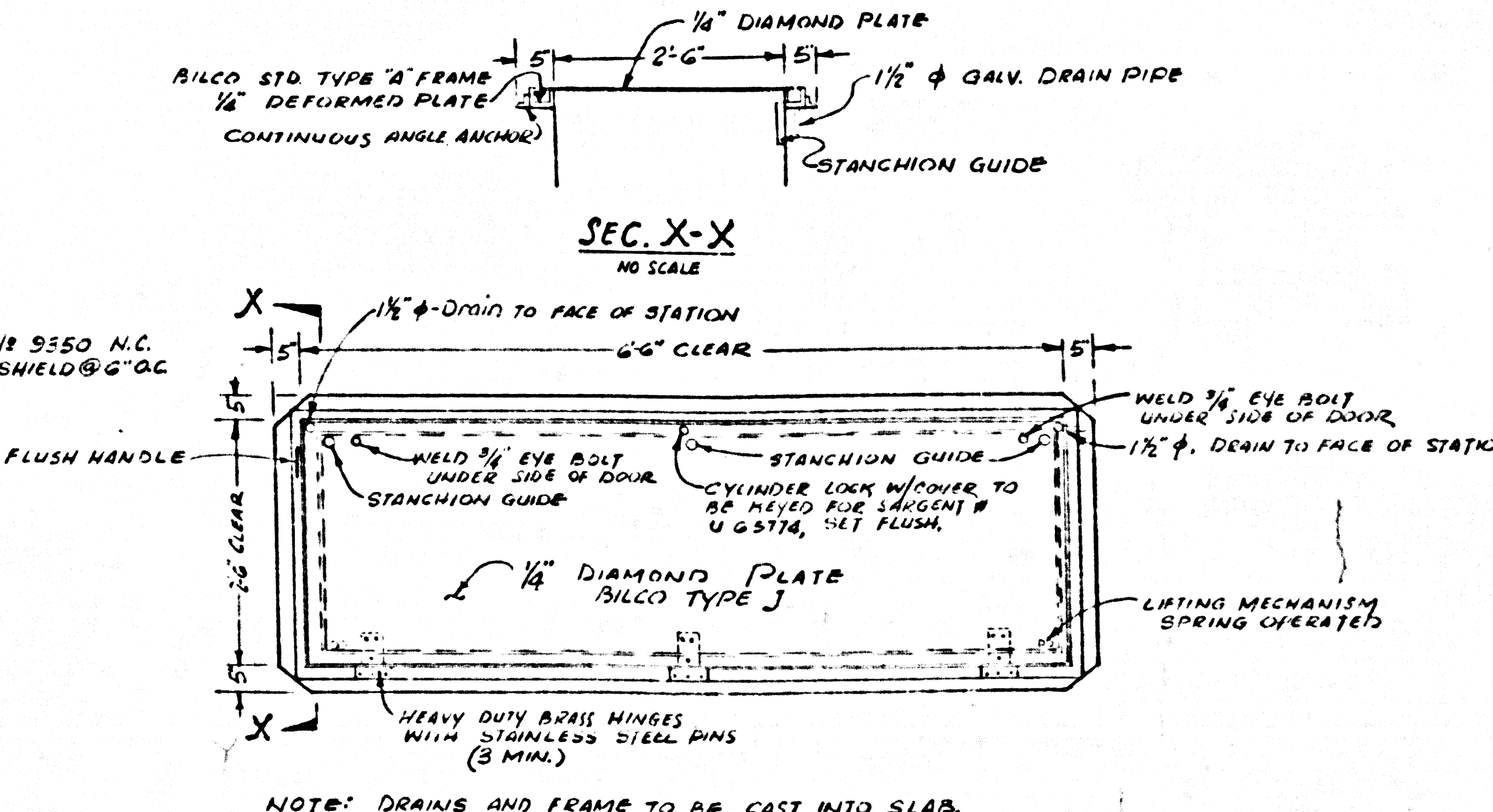
TYPICAL PIPE SLEEVE  
DETAIL  
NO SCALE



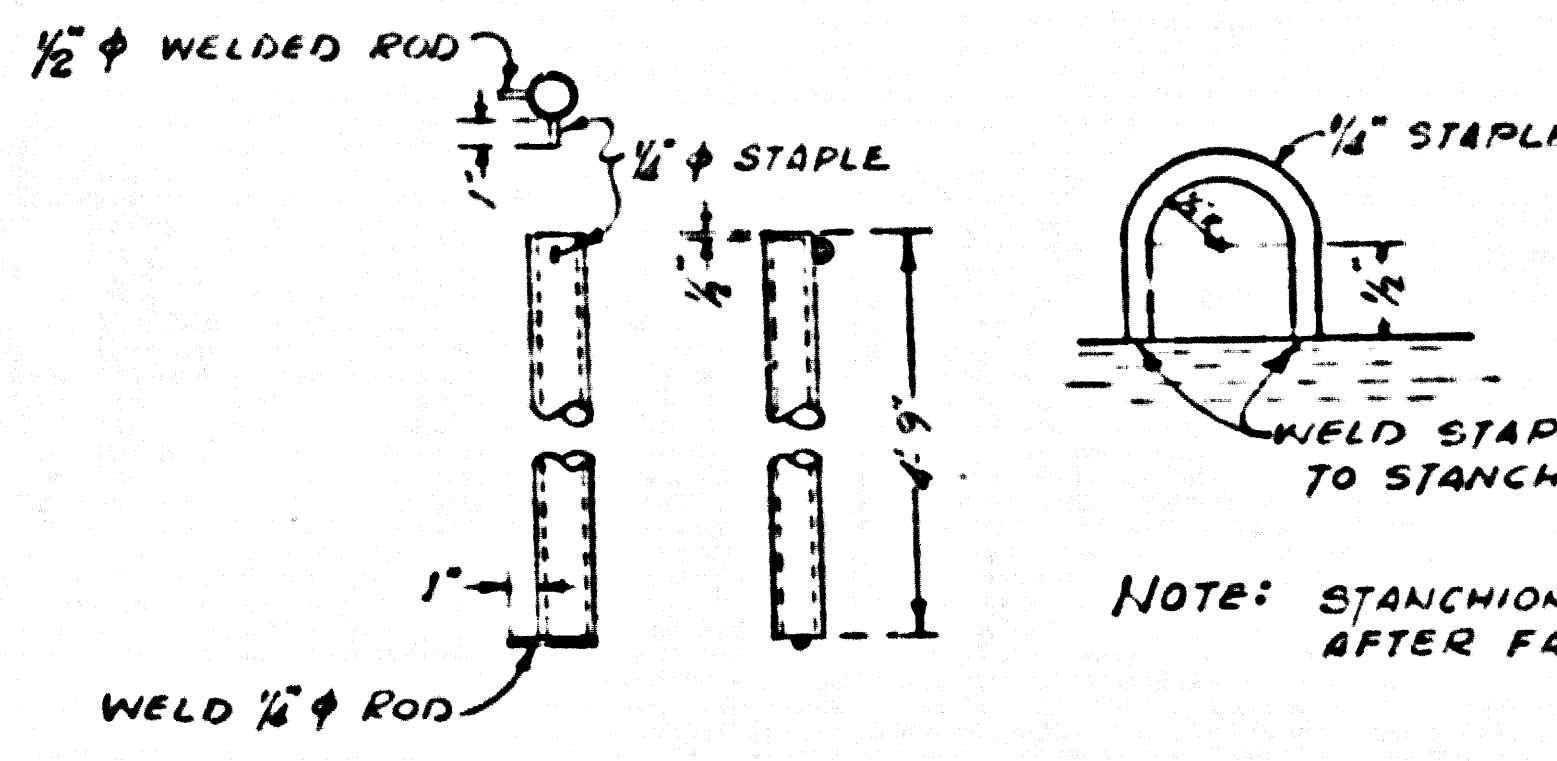
- NOTES:
1. STAIRWAY RAILING TO BE FABRICATED FROM 1 1/2 INCH DIA PIPE. MAX. SUPPORT SPACING 5'-0".
  2. RAILINGS AND STAIRWAYS TO BE HOT DIPPED GALVANIZED AFTER FABRICATION AS PER ASTM-A 123.
  3. ALL STEPS AND LANDINGS TO HAVE NON-SKID SURFACES.
  4. STAIRWAY AND RAILING CONSTRUCTION AND DIMENSIONS TO BE FIELD CHECKED PRIOR TO FABRICATION.



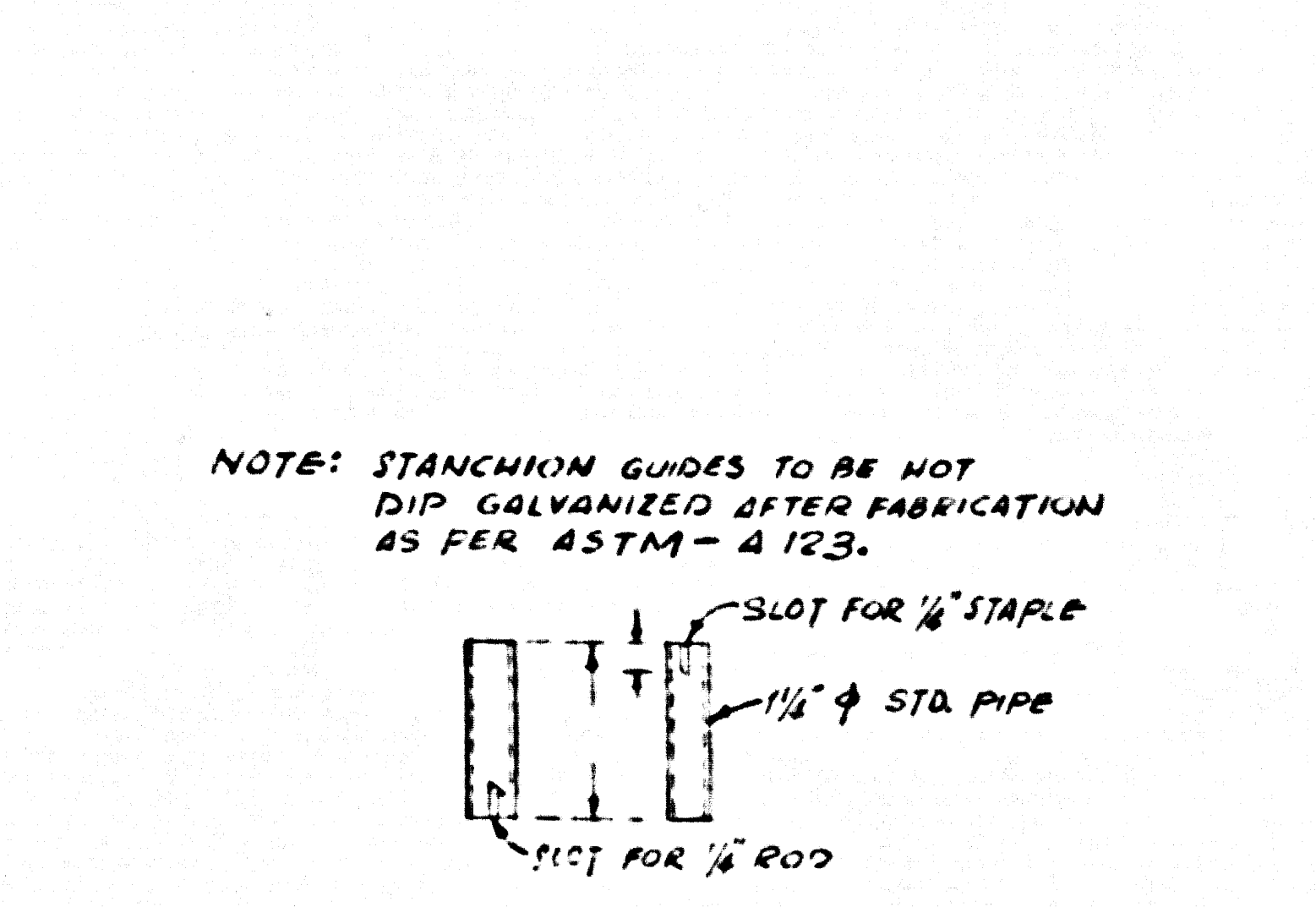
VENT SET  
NO SCALE



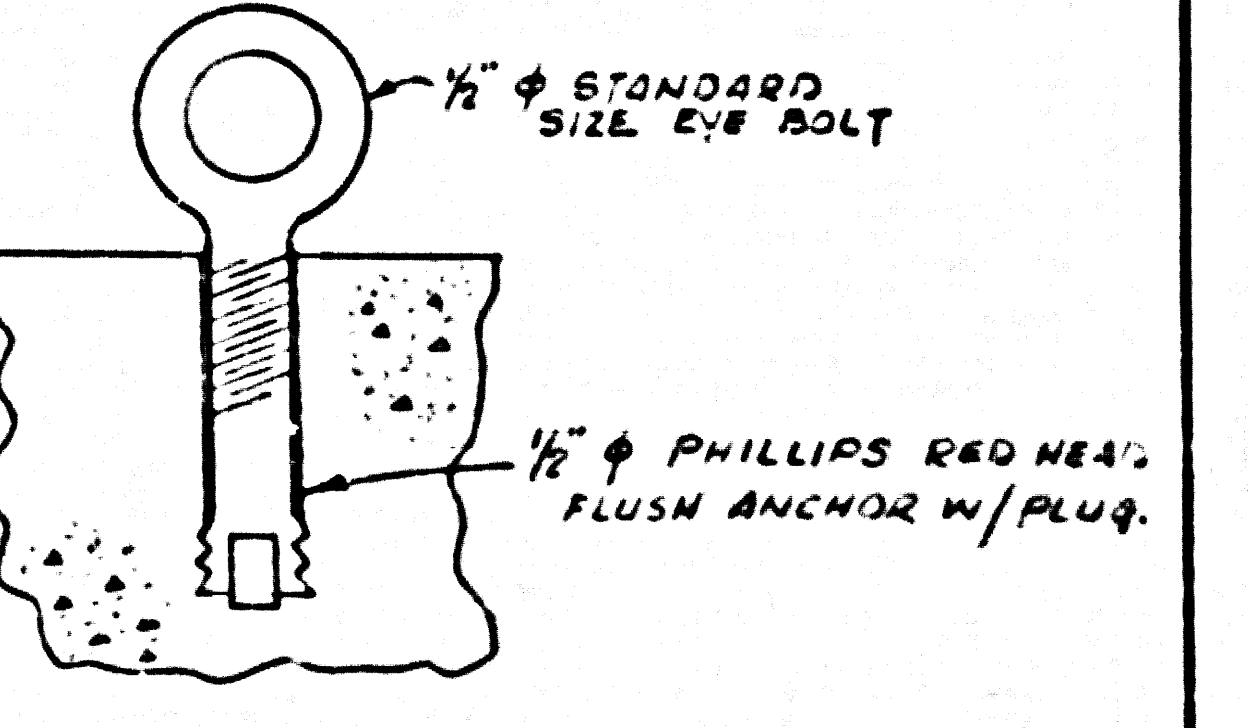
STAIRWELL DOOR "BILCO" J SPECIAL SIZE  
NO SCALE



STANCHION  
NO SCALE



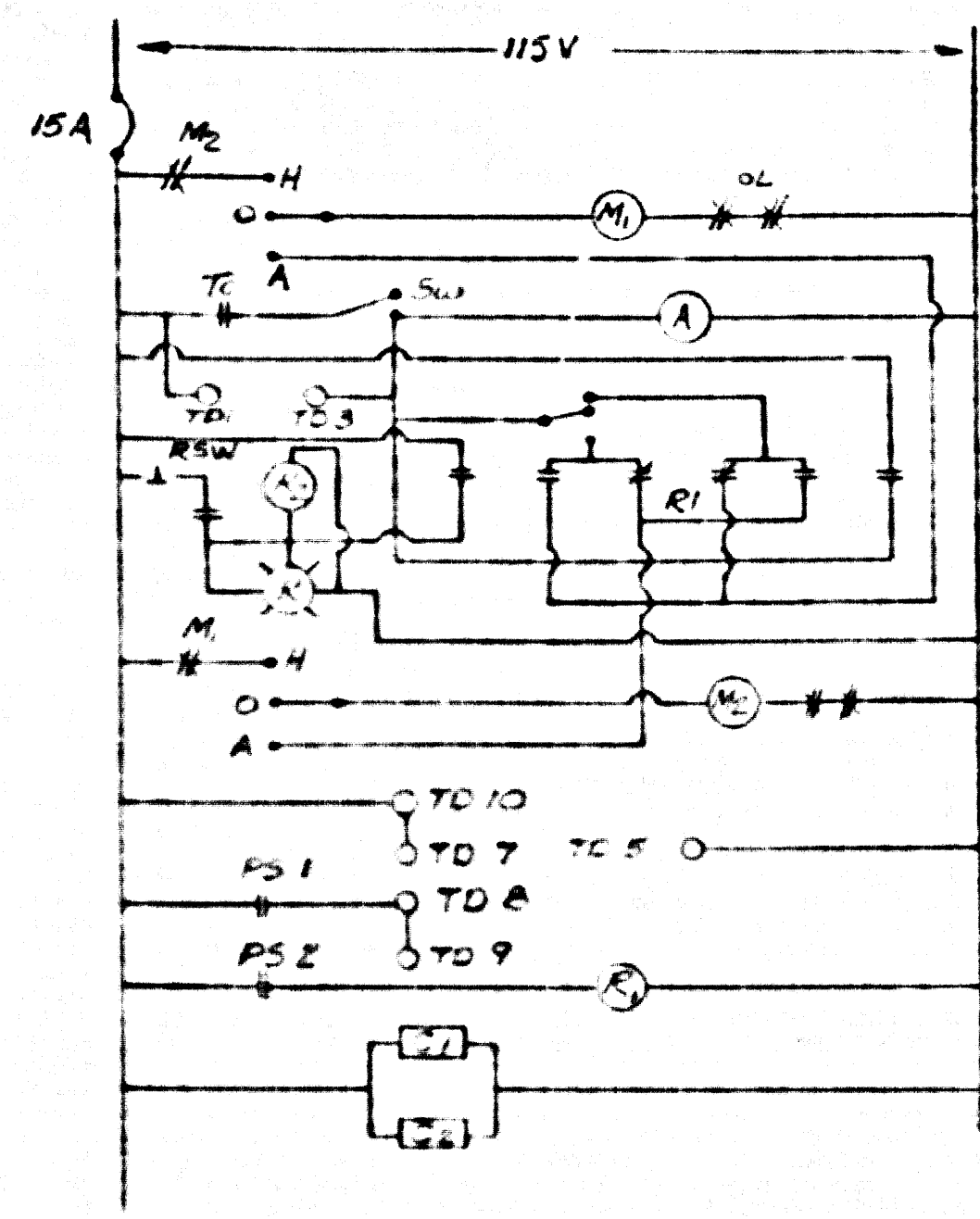
STANCHION GUIDE  
NO SCALE



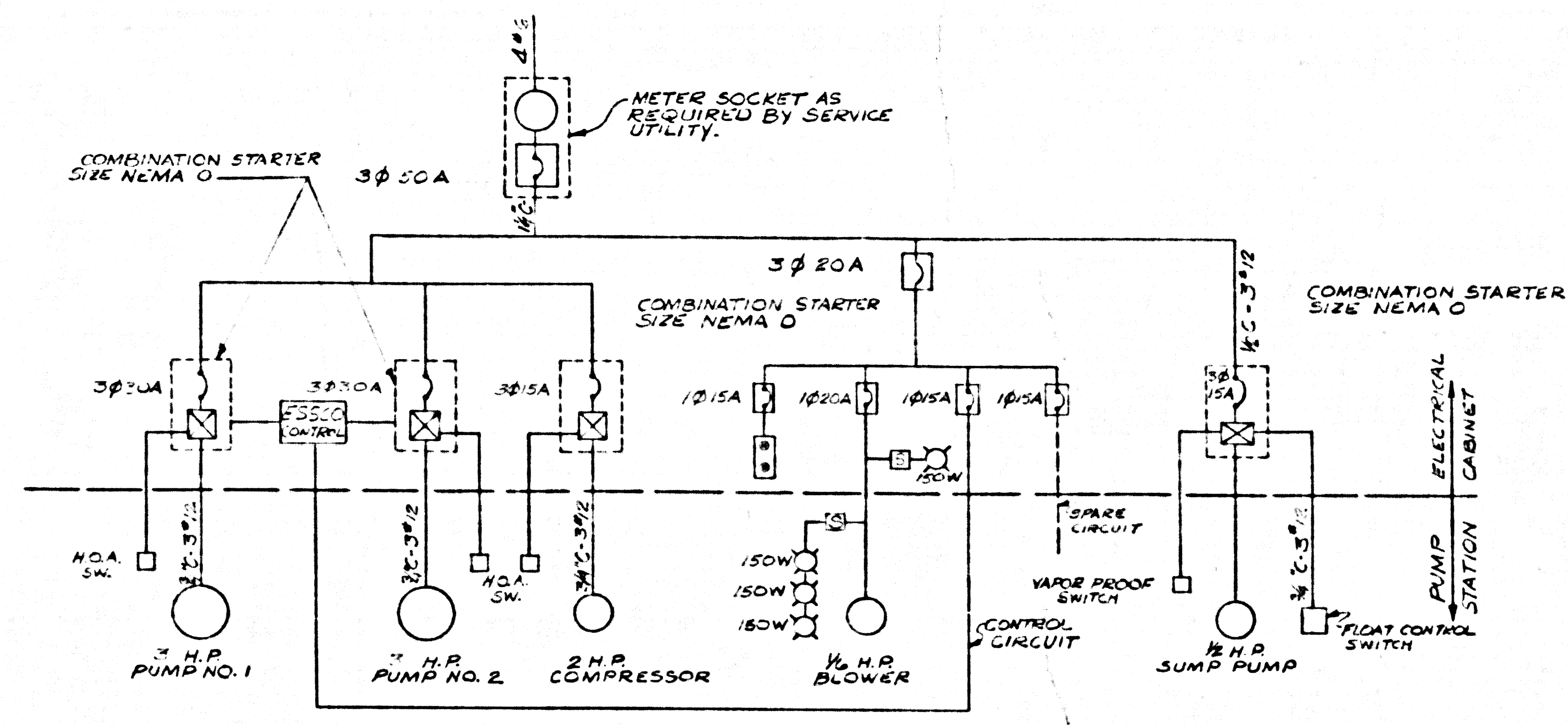
EYE BOLT  
NO SCALE

DEPARTMENT OF THE COUNTY ENGINEER SANITARY SEWER DIVISION COUNTY OF LOS ANGELES	DATE OCT. 1978 DESIGNED BY T.H. DRAWN BY T.H. CHECKED BY L.M. APPROVED BY L. & C. CO. INC. DATE	EL MONTE AIRPORT PHASE II SANITARY SEWERS PUMP STATION DETAILS	SHEET NO. 3770 DDK-5 WORK ORDER 743-09 PLANT PROJECT 7430 SHEET NO. S-9
---	--	---	--

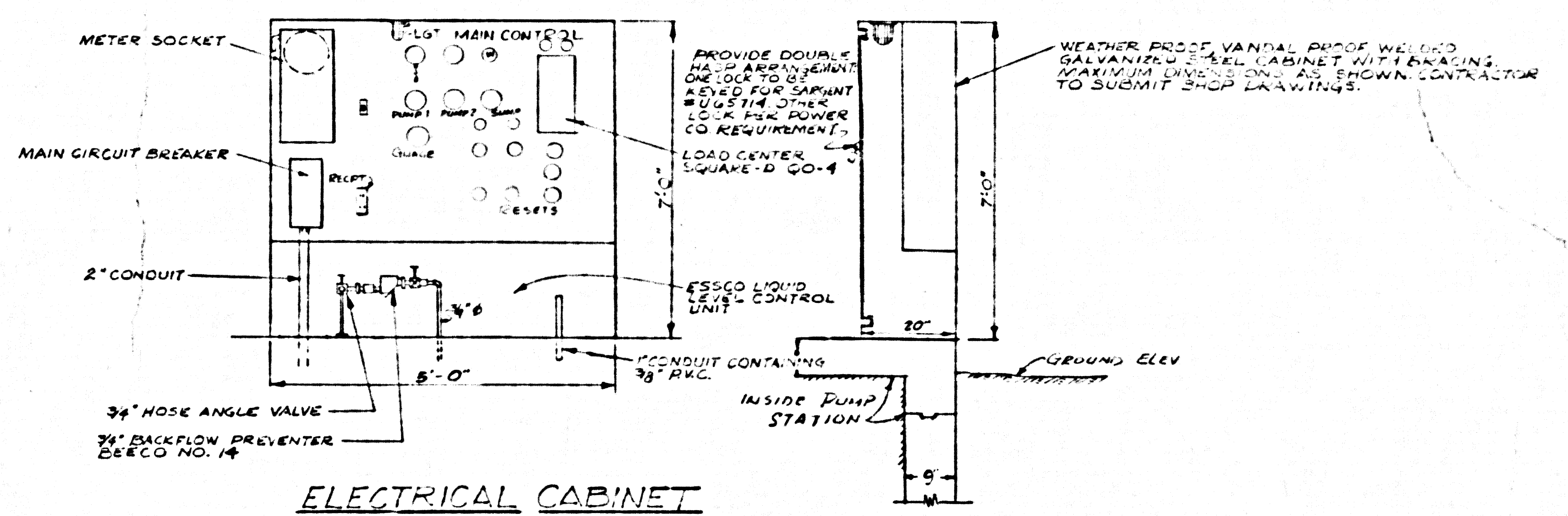
45247



CONTROL CIRCUIT



SCHEMATIC ELECTRICAL LAYOUT  
NO SCALE



ELECTRICAL CABINET  
NO SCALE

SYMBOLS & ABBREVIATIONS

- OL OVERLOAD RELAY
- NCA SELECTOR SWITCH
- A ALTERNATOR
- TO INTERVAL TIMER PARAGON #500-132-U
- TS NUMBERS INDICATE TERMINAL NO'S
- RSW RESET SWITCH
- R1 RELAY SQUARE D CLASS 8501 TYPE D3-62
- R2 ONE POLE RELAY
- C-162 COMPRESSOR
- AL ALARM LIGHT
- PS1 PRESSURE SWITCH
- PS2 PRESSURE SWITCH
- ME CIRCUIT BREAKER FOR MOTOR I
- M1 MOTOR I
- M2 MOTOR II
- H HAND
- O OFF
- A AUTOMATIC

45248

DEPARTMENT OF THE COUNTY ENGINEER HONORARY ASSISTANT COUNTY ENGINEER COUNTY OF LOS ANGELES	DATE	EL MONTE AIRPORT	SPEC. NO.
	DESIGNED BY	PHASE II SANITARY SEWERS	3720 DDB
APPROVED:	CHECKED BY	PUMP STATION-ELEC. DETAILS	WORK SHEET 7430 04
DIVISION ENGINEER	DATE		CAPITAL PROJECT 7430
DESIGN DIVISION			SHEET NO. S-10
			OF SHEETS