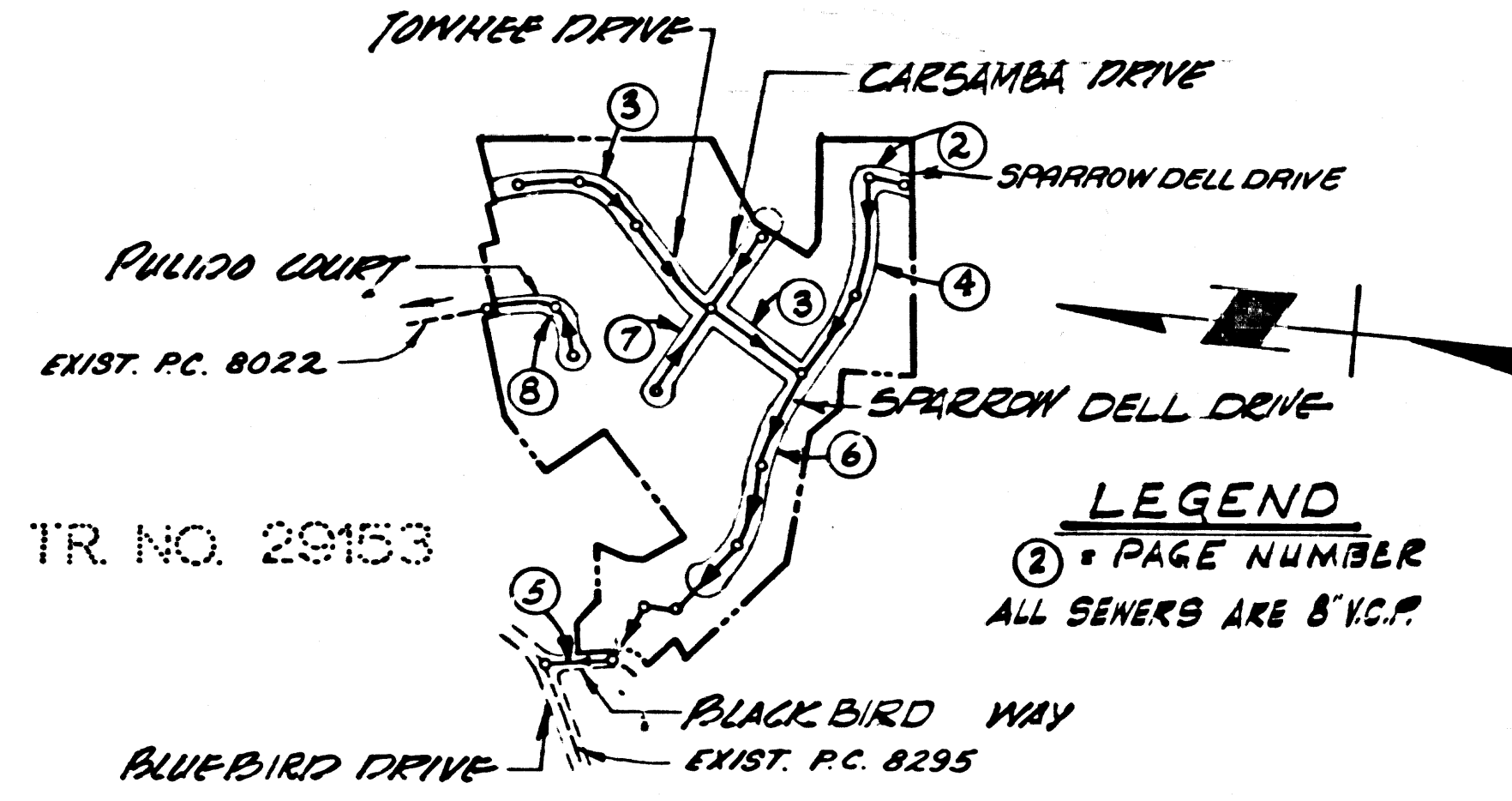


B.M. 818333 ELEV. 1022.803
 TO BE THE NEW CENTER POINT OF
 CURVE NO. 15. RADIUS 100.00' LOCATED
 CANYON RD AND MULHOLLAND HWY 271.
 E. POINT (408.138)
 NACIBU QUAD. 19 82

- THE FOLLOWING LATEST REVISED STANDARD PLANS ON FILE IN THE OFFICE OF THE COUNTY ENGINEER SHALL APPLY IN THE CONSTRUCTION OF THIS PROJECT.
- LEGEND 2-1
 - MIN. PUBLIC SAFETY REGULATIONS 2-2
 - BATCH MANHOLES 2-3
 - NON-REINFORCED PRECAST CONCRETE MANHOLES 2-4
 - REINFORCED PRECAST CONCRETE MANHOLES 2-5
 - MANHOLE FRAME AND COVER 2-18
 - MANHOLE TYPE 2-17
 - BEDDING FOR SEWER PIPE 2-21
 - BRACING AND ENGAGEMENT 2-22
 - W/P OF TEE SUPPORT 2-23
 - ALLOWABLE TRENCH WIDTHS 4-33
 - ANCHORS 5-24
 - BAFFLE BOARDS 5-31



KEY MAP
 P.L. 8303
 SCALE: 1"=100'

REVISION: PAGE 5, CHANGED M.H. @ STA. 1+17.58 TO STA. 1+30.00 & KEY SURFACE OVER SEWER.
 APPROVED: *Sam X. Miller*
 OFFICE OF THE COUNTY ENGINEER

REVISION NO. 2: PAGE 7 CHANGED STATIONING 46 TOWHEE DRIVE, REV. CURB GRADES AND SEWER GRADES, PAGE 3 CHANGED STA. TOWHEE N/O CARSAMBA DRIVE, PLAN AND PROFILE
 APPROVED: *Sam X. Miller*
 OFFICE OF THE COUNTY ENGINEER

REVISION NO. 3: PAGE 5 CHANGED ALIGNMENT & ADDED M.H. ON BLACKBIRD DRIVE
 APPROVED: *Sam X. Miller*
 OFFICE OF THE COUNTY ENGINEER

ISSUE NO PERMITS UNTIL TRUNK OUTLETS IS AVAILABLE.

DOUBLE SCALE
 CALABASAS BLDG. DIST. NO. 9.1

PROFILE ALIGNMENT AND GRADE OF
 SANITARY SEWERS PAGE 1
 TO BE CONSTRUCTED IN

TRACT 25484
 PRIVATE CONTRACT NO. 8303

W.S.
 4 SHEETS, 6 PAGES
 SCALE: VERT. 1"=8' HORIZ. 1"=40'
 MAY 1969
 PREPARED IN THE OFFICES OF
 E. L. PEARSON & ASSOC.
 1531 W. REDWOOD BEACH BLVD.
 GARDENA, CALIF. 321-1515
 REG. C. E. NO. 14814

- NOTES:
- PROVIDE STAKES ON THE PROPERTY LINE OR PROPERTY LINES PRODUCED AT RIGHT ANGLES TO THE SEWER LINE AT THE CENTER LINE OF EACH MANHOLE.
 - NO REPRESENTATIVE OF THE COUNTY ENGINEER WILL SURVEY OR LAY OUT ANY PORTION OF THE WORK.
 - THE PRIVATE ENGINEER SHALL FURNISH THE COUNTY ENGINEER WITH GRADE SHEETS AND STATIONING FOR ALL HOUSE LATERALS AND "Y" BRANCHES AND SHALL PROVIDE STAKES FOR THEM AT THEIR PROPER LOCATIONS WITH STATIONING PLAINLY MARKED. ALL HOUSE LATERALS SHALL BE CONSTRUCTED IN A STRAIGHT ALIGNMENT AT RIGHT ANGLES FROM THE MAIN LINE SEWER EXCEPT AS SHOWN ON THE PLANS. HOUSE LATERALS FROM CHIMNEYS SHALL NOT HAVE AN ANGLE OF LESS THAN 45° WITH THE MAIN LINE SEWER. ANY CHANGE IN ALIGNMENT SHALL BE REQUESTED IN WRITING BY THE PRIVATE ENGINEER.
 - THE PRIVATE ENGINEER SHALL FURNISH THE HOUSE LATERAL DEPTH AT THE PROPERTY LINE BELOW THE TOP OF CURB ELEVATION FOR EACH HOUSE LATERAL ON THE GRADE SHEET.
 - NO REVISIONS SHALL BE MADE IN THESE PLANS WITHOUT THE APPROVAL OF THE COUNTY ENGINEER.
 - THE CONTRACTOR SHALL NOTIFY THE CONSTRUCTION DIVISION BY TELEPHONE, MADISON 9-472, EXT. 1351, AT LEAST TWENTY-FOUR HOURS BEFORE STARTING ANY WORK UNDER THIS CONTRACT.
 - ALL STRUCTURES SHALL BE EITHER BRICK MANHOLES PER 9-5 OR PRECAST CONCRETE M.H. PER 9-5-18-19 EXCEPT AS NOTED.
 - "Y" OR "T" BRANCHES MAY BE USED FOR CONNECTIONS TO MAIN LINE SEWERS EXCEPT AS NOTED.
 - SEWERS TO BE TESTED BY AIR PRESSURE METHOD FOR LEAKAGE PER SEC. 9000-2, 9.7 C OF STANDARD SPEC. USE EXTRA STRENGTH PIPE. ALL PIPE IS STANDARD DEPTH EXCEPT AS NOTED.
 - VITRIFIED CLAY PIPE JOINTS SHALL BE TYPE "B", "F", OR "G" PER STANDARD SPEC. SEC. 828-4.
 - IF DURING THE COURSE OF CONSTRUCTION IT IS DETERMINED THAT THERE IS LESS THAN FOUR FEET OF COVER OVER THE TOP OF A MAIN LINE OR HOUSE LATERAL V.C.P. SEWER WHICH IS NOT INDICATED ON THE PLANS, THE PIPE SHALL BE ENCASED PER 9-33, UNLESS OTHERWISE APPROVED BY THE COUNTY ENGINEER.
 - HOUSE LATERALS TO BE CONSTRUCTED WITH INVERTS AT PROPERTY LINE 4 FEET BELOW CURB GRADE EXCEPT AS NOTED.
 - RESURFACE ALL TRENCHES WITHIN PAVED AREAS TO MEET L.A. COUNTY ROAD DEPT. OR CALIFORNIA STATE HIGHWAY REQUIREMENTS IN ACCORDANCE WITH PERMITS.
 - IF A PRIVATE PIPE IS WITHIN THREE FEET OF THE SEWER, THE SEWER SHALL BE ENCASED PER 9-33 TWO FEET ON EITHER SIDE FROM THE POINT OF INTERFERENCE.
 - REFER TO SEC. 7-10.4.1 OF THE STD. SPEC. REGARDING SAFETY ORDERS.
 - SPECIAL BACKFILL IN DESIGNATED AREAS:
 (A) BACKFILL TRENCH AND REPLACE OTHER EARTH REMOVE 30 AS TO ACHIEVE THE NATURAL OR FINISHED BOUNDS AND JOINS SHOWN ON THE GEOTECH PLAN APPROVED FOR THIS TRACT BY THE BUILDING AND SAFETY DIVISION.
 (B) ALL BACKFILL AND EARTH REPLACED SHALL BE COMPACTED TO A MINIMUM OF 90% OF MAXIMUM DENSITY PER A.S.T.M. STANDARD METHOD OF TEST D698 - 57 AS MODIFIED. ACCEPTABLE CERTIFICATION OF SUCH COMPACTON SHALL BE SUBMITTED TO THE CONSTRUCTION DIVISION.

NOTICE TO CONTRACTOR
 The existence and location of any underground utility pipes or structures shown on these plans are obtained by a search of the available records. To the best of my knowledge there are no existing utilities except as shown on these plans. The contractor is required to take due precautionary measures to protect the utility lines shown and any other lines not of record or not shown on these plans.
J. M. Madala
 C.E. 14814

COLLECT CHARGES AS INDICATED

GRADES TO WHICH THIS IMPROVEMENT IS TO BE CONSTRUCTED ARE SHOWN ON PLANS AND PROFILES GRADE POINTS FOR TOP OF CURBS, CENTER LINE OF STREETS, OR CENTER LINE OF ALLEYS ARE SHOWN BY CIRCLES ON PROFILES. AT ALL POINTS BETWEEN DESIGNATED POINTS THE GRADE SHALL BE ESTABLISHED SO AS TO CONFORM TO A STRAIGHT LINE DRAWN BETWEEN SAID DESIGNATED POINTS. ELEVATIONS ARE IN FEET ABOVE U.C. & C.S. SEA LEVEL DATUM OF 1929. THIS DRAWING AND THE DATA HEREON ARE HEREBY MADE A PART OF THE SPECIFICATIONS WORK. SHALL BE CONSTRUCTED ACCORDING TO STD. WHICH FOR PUBLIC WORKS CONSTRUCTION. DATED JAN. 8, 1969. ON FILE IN THE OFFICE OF THE COUNTY ENGINEER AND SHALL BE PROSECUTED ONLY IN THE PRESENCE OF THE COUNTY ENGINEER. BEFORE WORK CAN BE STARTED, THE CONTRACTOR MUST OBTAIN A PERMIT TO EXCAVATE IN COUNTY STREETS FROM THE L.A. COUNTY ROAD DISTRICT OFFICE NO. 3, AND PAY A FEE TO THE COUNTY ENGINEER, ROOM 303, COUNTY ENGINEERING BUILDING, 100 WEST SECOND STREET, IN MAILING. APPROVAL OF THIS PLAN BY THE COUNTY OF LOS ANGELES DOES NOT CONSTITUTE A REPRESENTATION AS TO THE ACCURACY OF THE LOCATION OR OF THE EXISTENCE OR NON-EXISTENCE OF ANY UNDERGROUND UTILITY PIPE, OR STRUCTURE WITHIN THE LIMITS OF THIS PROJECT. THIS NOTE APPLIES TO ALL PAGES. IF WORK IS TO BE DONE IN A STATE HIGHWAY, A PERMIT MUST BE OBTAINED FROM THE STATE OF CALIFORNIA, DIVISION OF HIGHWAYS, 120 SOUTH SPRING STREET, LOS ANGELES, CALIFORNIA.

COUNTY OF LOS ANGELES, CALIFORNIA
 JOHN A. LAMBIE, COUNTY ENGINEER
 APPROVED BY: *Sam X. Miller*
 REGIONAL ENGINEER

LAS VIRGENES MUNICIPAL WATER DISTRICT
 APPROVED BY: *Alto S. Flores*
 CHIEF ENGINEER

CHECKED BY: *W. O. ...*
 REG. C. E. NO. 3226

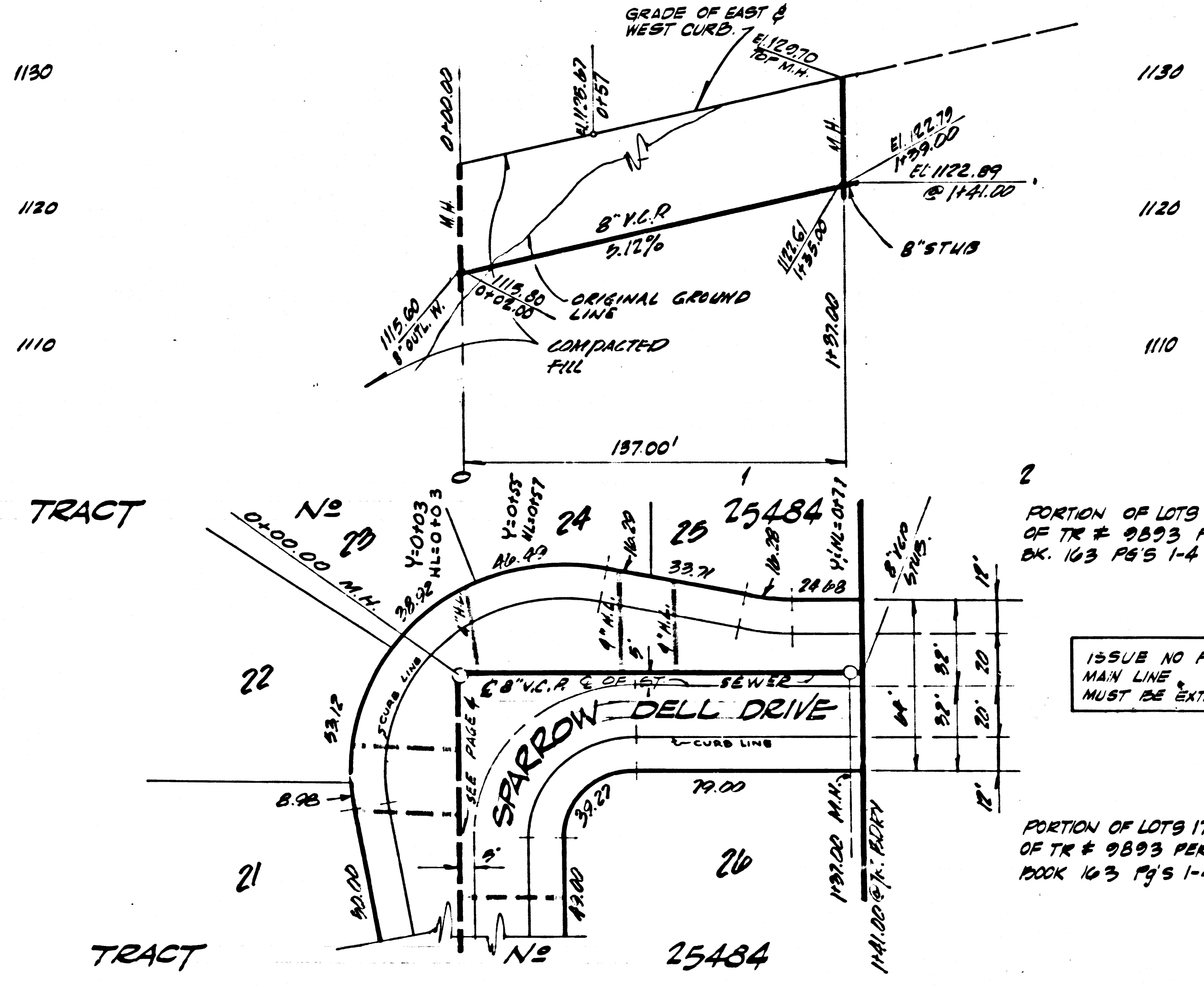
J. N.

P. C. 8303 PAGE 2

DOUBLE SCALE

SEE LISTING FOR CONNECTION CHARGES FOR COUNTY OF LOS ANGELES

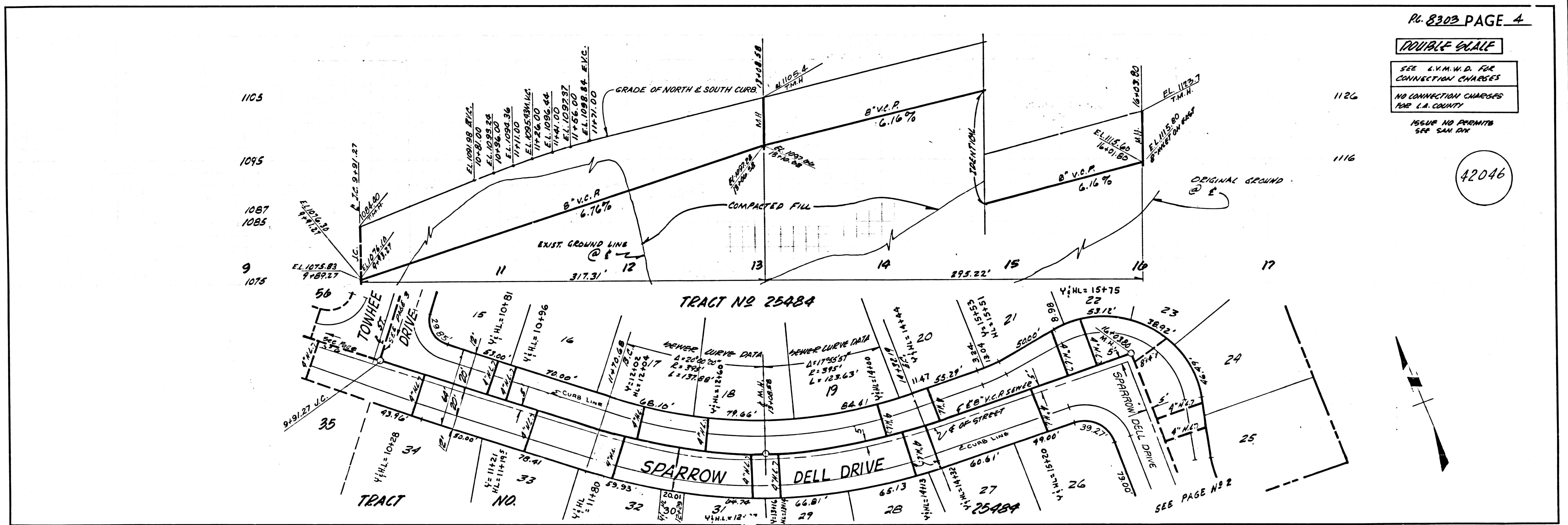
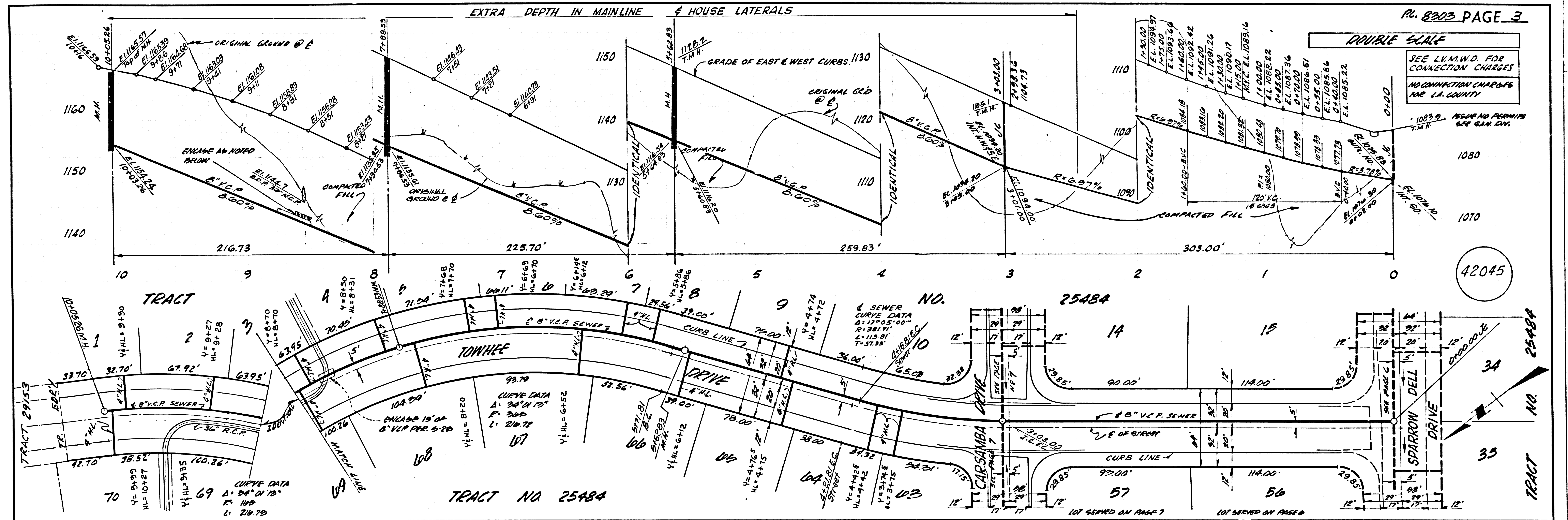
42044

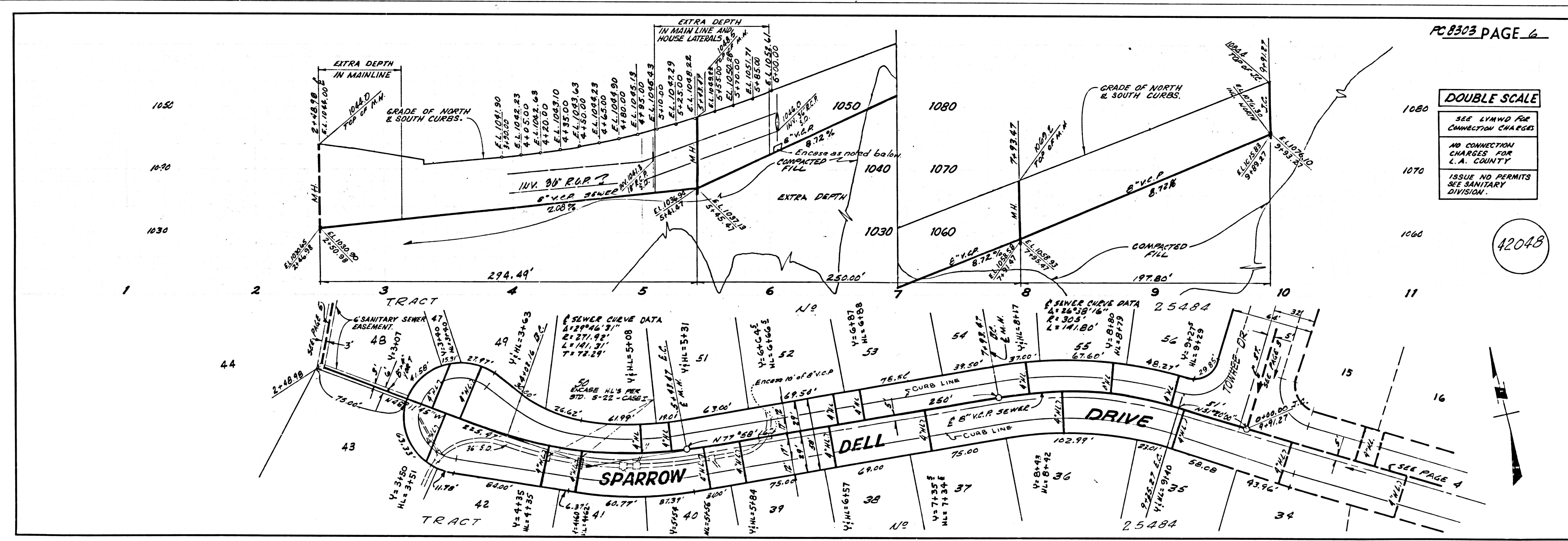
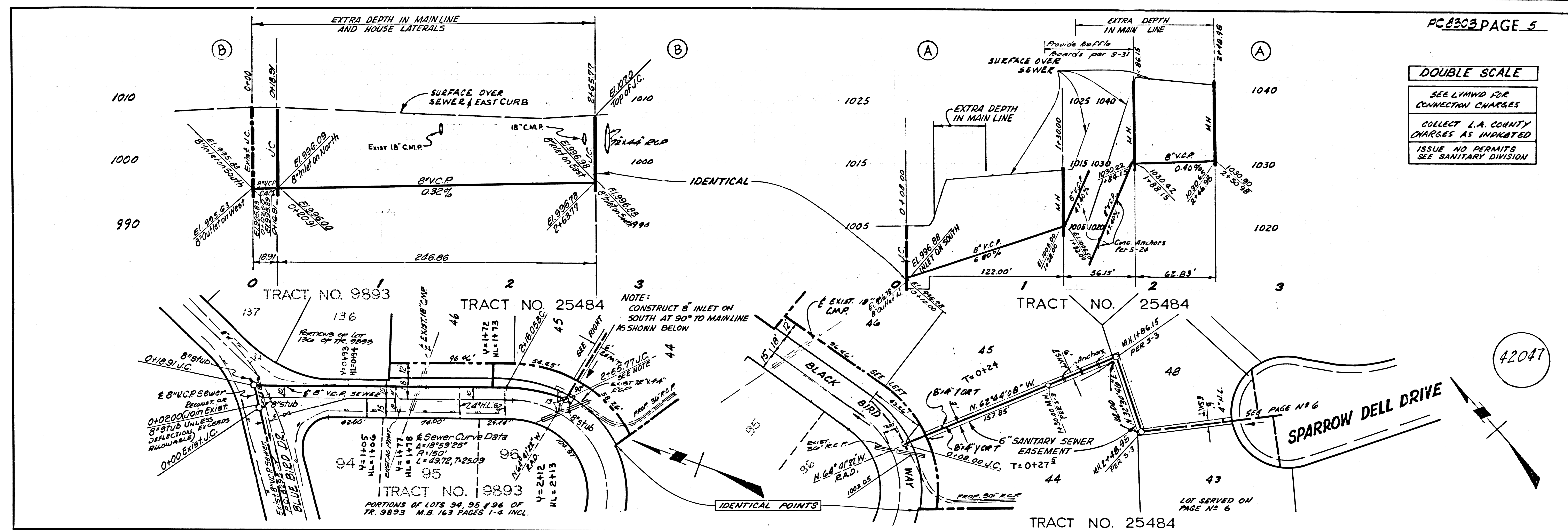


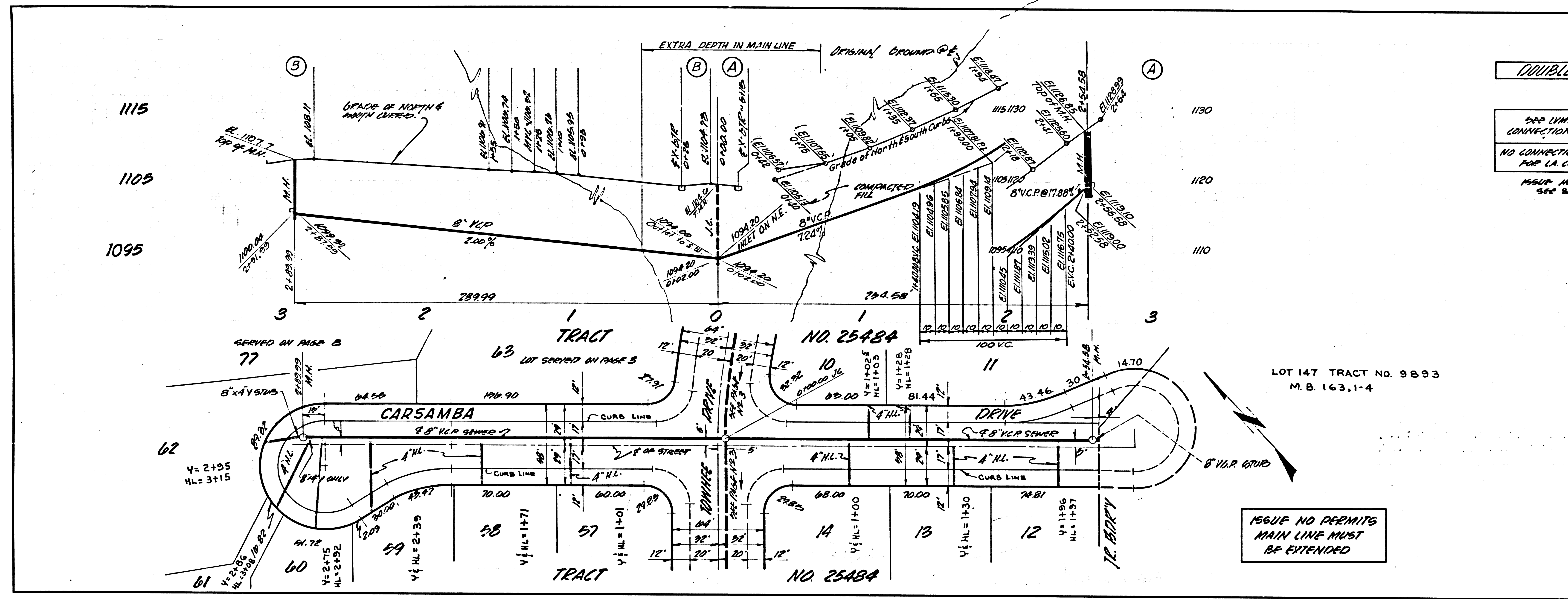
PORTION OF LOTS 173 & 174 OF TR. 8303 PER MAP BK. 103 PG. 5 1-4

ISSUE NO PERMITS MAIN LINE MUST BE EXTENDED

PORTION OF LOTS 173 & 174 OF TR. 8303 PER MAP BOOK 103 PG. 5 1-4







DOUBLE SCALE

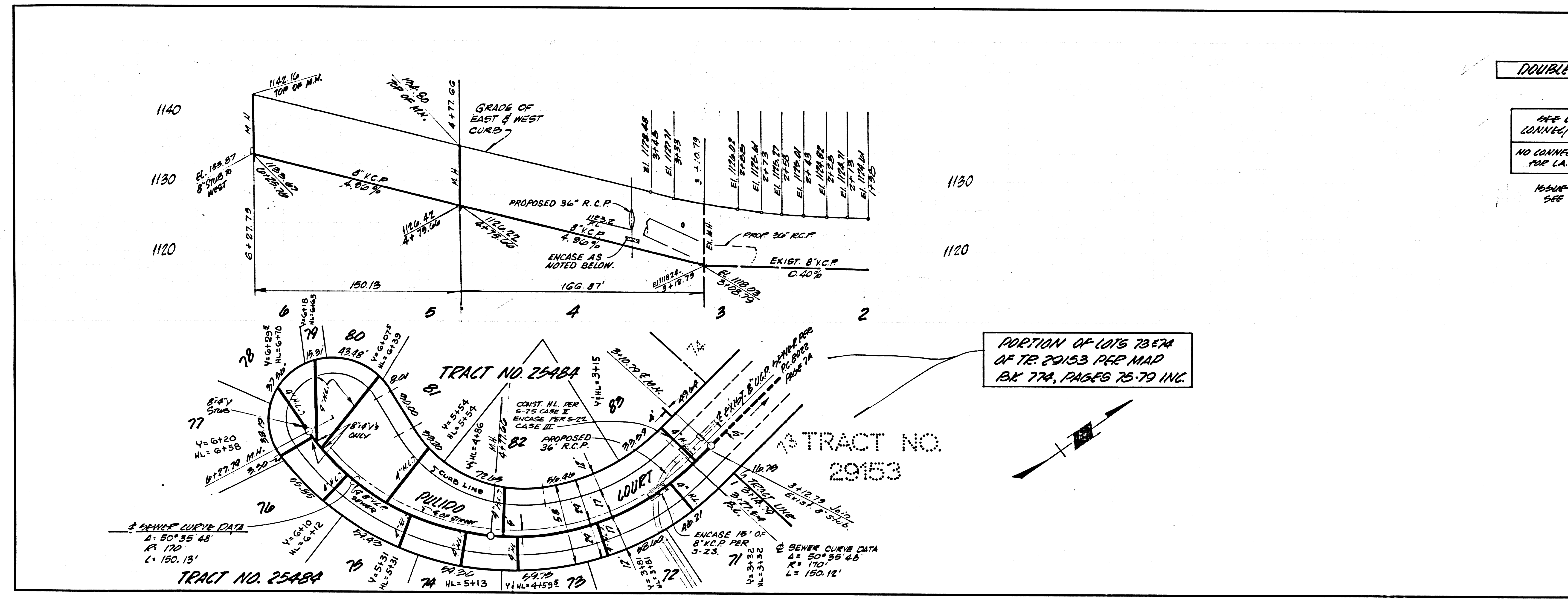
SEE LHMWD FOR CONNECTION CHARGES

NO CONNECTION CHARGES FOR LA. COUNTY

ISSUE NO PERMITS SEE SAN. DIV.

ISSUE NO PERMITS MAIN LINE MUST BE EXTENDED

42049



DOUBLE SCALE

SEE LHMWD FOR CONNECTION CHARGES

NO CONNECTION CHARGES FOR LA. COUNTY

ISSUE NO PERMITS SEE SAN. DIV.

PORTION OF LOTS 78-83 OF TR. 20153 PER MAP BK 774, PAGES 75-79 INC.

42050