

B.M. B.L. 937 ELEV. 1433.736  
 L&T NW Cor Conc. slab @ NW cor bldg  
 18514 (Crossroads Cor) 56 ft S.E.  
 Soledad Canyon Rd 8' 185 ft. N of W  
 Remy Sierra Hwy  
 NEWHALL QUAD. 1965

**PRIVATE ENGINEERS NOTICE TO CONTRACTORS**  
 The existence and location of any underground utility or structure shown on these plans are obtained by a search of the available records. To the best of our knowledge there are no existing utilities except as shown on this map. The contractor is required to take due precautionary measures to protect the utility lines not of record or not shown on this drawing.

*E. L. Bulden Jr.*  
 E. L. Bulden Jr. R.C.E. 10533

**NEWHALL BLDG. DIST. NO. 8.2**

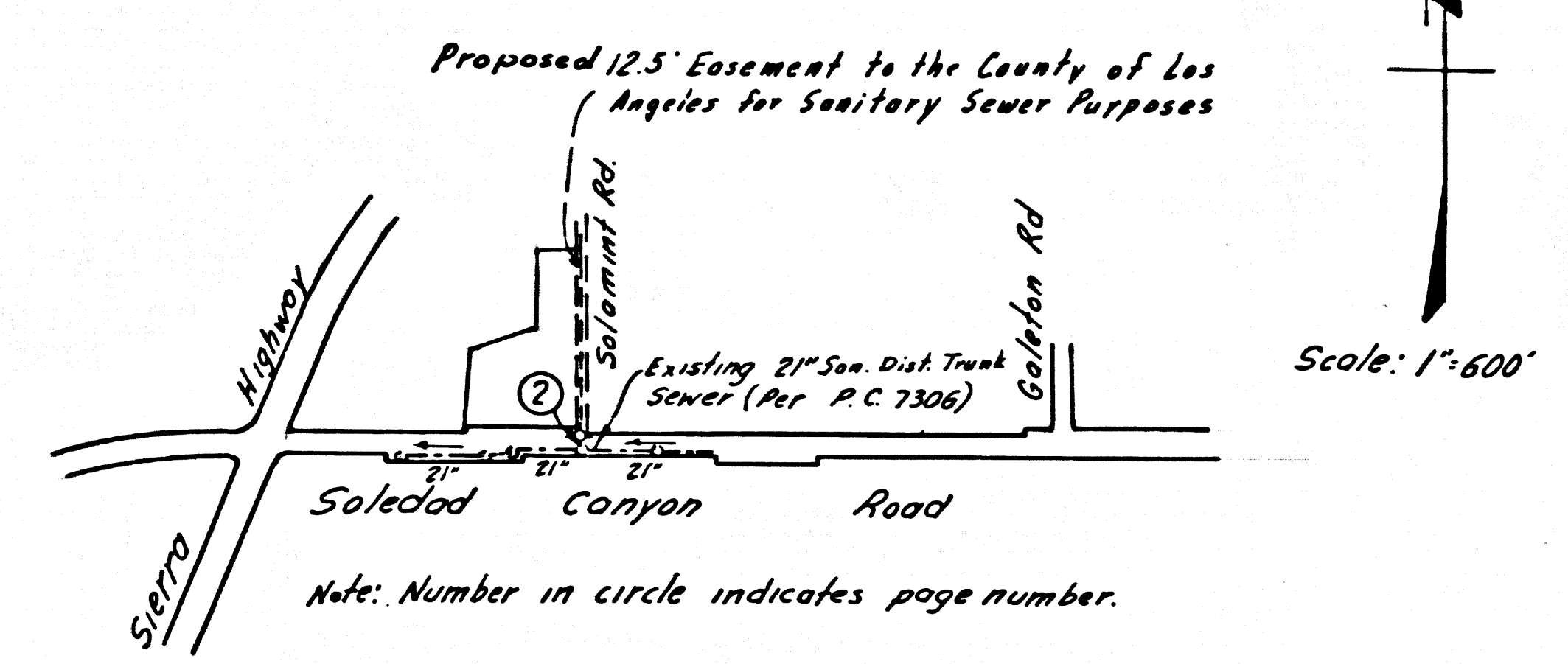
PROFILE, ALIGNMENT AND GRADE OF  
**SANITARY SEWERS** P.C.8308  
 CONSTRUCTED IN PAGE 1

**SOLEDAD CANYON ROAD**  
 (CANYON PALMS TRAILER PARK)  
**PRIVATE CONTRACT NO. 8308**  
 W.S. 62  
 261 5 149

1 SHEETS; 2 PAGES  
 SCALE: VERT. 1"=4' HORIZ. 1"=40'  
 DEC., 1969  
 PREPARED IN THE OFFICES OF

**ANDEL ENGINEERING COMPANY**  
 By: *E. L. Bulden Jr.*  
 REG. C. E. NO. 10533

State Highway Encroachment Permit must be obtained prior to obtaining County Engineer Construction Permit.



**INDEX MAP**  
 P.C. 8308

- NOTES:**
- HOUSE LATERALS TO BE CONSTRUCTED WITH A 1/4" PER FOOT RISE TO PROPERTY LINE.
  - PROVIDE STAKES ON THE PROPERTY LINE OR PROPERTY LINES PRODUCED AT RIGHT ANGLES TO THE SEWER LINE AT THE CENTER LINE OF EACH MANHOLE.
  - NO REPRESENTATIVE OF THE COUNTY ENGINEER WILL SURVEY OR LAY OUT ANY PORTION OF THE WORK.
  - THE PRIVATE ENGINEER SHALL FURNISH THE COUNTY ENGINEER WITH GRADE SHEETS AND STATIONING FOR ALL HOUSE LATERALS AND "T" OR "T" BRANCHES AND SHALL PROVIDE STAKES FOR THEM AT THEIR PROPER LOCATIONS WITH STATIONING PLAINLY MARKED. ALL HOUSE LATERALS SHALL BE CONSTRUCTED IN A STRAIGHT ALIGNMENT AT RIGHT ANGLES FROM THE MAIN LINE SEWER EXCEPT AS SHOWN ON THE PLANS. HOUSE LATERALS FROM CHIMNEYS SHALL NOT HAVE AN ANGLE OF LESS THAN 45° WITH THE MAIN LINE SEWER. ANY CHANGE IN ALIGNMENT SHALL BE REQUESTED IN WRITING BY THE PRIVATE ENGINEER.
  - THE PRIVATE ENGINEER SHALL FURNISH THE HOUSE LATERAL DEPTH AT THE PROPERTY LINE BELOW THE GROUND ELEVATION FOR EACH HOUSE LATERAL ON THE GRADE SHEET.
  - NO REVISIONS SHALL BE MADE IN THESE PLANS WITHOUT THE APPROVAL OF THE COUNTY ENGINEER.
  - THE CONTRACTOR SHALL NOTIFY THE CONSTRUCTION DIVISION BY TELEPHONE, MADISON 9-4747, EXT. 81351, AT LEAST TWENTY-FOUR HOURS BEFORE STARTING ANY WORK UNDER THIS CONTRACT.
  - ALL STRUCTURES SHALL BE EITHER BRICK MANHOLES PER S-3 OR PRECAST CONCRETE MANHOLES PER S-5 OR S-6, EXCEPT AS NOTED.
  - "T" OR "T" BRANCHES MAY BE USED FOR CONNECTIONS TO MAINLINE SEWERS EXCEPT AS NOTED.
  - MANHOLE TOPS IN UNIMPROVED RIGHTS OF WAY TO BE LEVEL WITH FINISHED GRADE.
  - USE EXTRA STRENGTH PIPE. ALL PIPE IS STANDARD DEPTH EXCEPT AS NOTED.
  - VERIFIED CLAY PIPE JOINTS SHALL BE TYPE "B", "F", OR "G" PER STANDARD SPECIFICATIONS SECTION 208.2.
  - IF A POWER POLE IS WITHIN THREE FEET OF THE SEWER, THE SEWER SHALL BE ENCASED, PER S-22, TWO FEET ON EACH SIDE FROM THE POINT OF INTERFERENCE.
  - IF DURING THE COURSE OF CONSTRUCTION IT IS DETERMINED THAT THERE IS LESS THAN FOUR FEET OF COVER OVER THE TOP OF A MAIN LINE OR HOUSE LATERAL P.C.P. SEWER WHICH IS NOT INDICATED ON THE PLANS, THE PIPE SHALL BE ENCASED PER S-22, UNLESS OTHERWISE APPROVED BY THE COUNTY ENGINEER.
  - RESURFACE ALL TRENCHES WITHIN PAVED AREAS TO MEET L.A. COUNTY ROAD DEPT. OR CALIFORNIA STATE HIGHWAY REQUIREMENTS IN ACCORDANCE WITH PERMITS.
  - SEWERS TO BE TESTED FOR LEAKAGE PER SECTION 206.1.3.7 OF THE STANDARD SPECIFICATIONS.
  - REFER TO SECTION 7-10.4.1 OF THE STANDARD SPECIFICATIONS, REGARDING SAFETY CHARGES.
  - ALL JOINTS BETWEEN CAST IRON PIPE AND VERIFIED CLAY PIPE SHALL BE MADE WITH A RUBBER SLEEVE JOINT, TYPE "C" OR "B", WITH BUSHING IF NECESSARY PER STANDARD SPECIFICATIONS, SECTION 208.2.

THE FOLLOWING LATEST REVISED STANDARD PLANS ON FILE IN THE OFFICE OF THE COUNTY ENGINEER SHALL APPLY IN THE CONSTRUCTION OF THIS PROJECT.

LEGEND	S-1
MINIMUM PUBLIC SAFETY REQUIREMENTS	S-2
BRICK MANHOLE	S-3
NON-REINFORCED PRECAST CONCRETE MANHOLE	S-5
REINFORCED PRECAST CONCRETE MANHOLE	S-6
MANHOLE FRAME AND COVER	S-11
STANDARD MANHOLE STEP	S-17
BERMING FOR SEWER PIPE	S-19
CRADLING AND ENCASING	S-23
PIPE ON THE SUPPORT	S-26
ALLOWABLE TRENCH WIDTHS	S-27

County Sanitation Districts shall be notified prior to the following so that required inspection can be made (Phone 307-1028 or 400-8009).

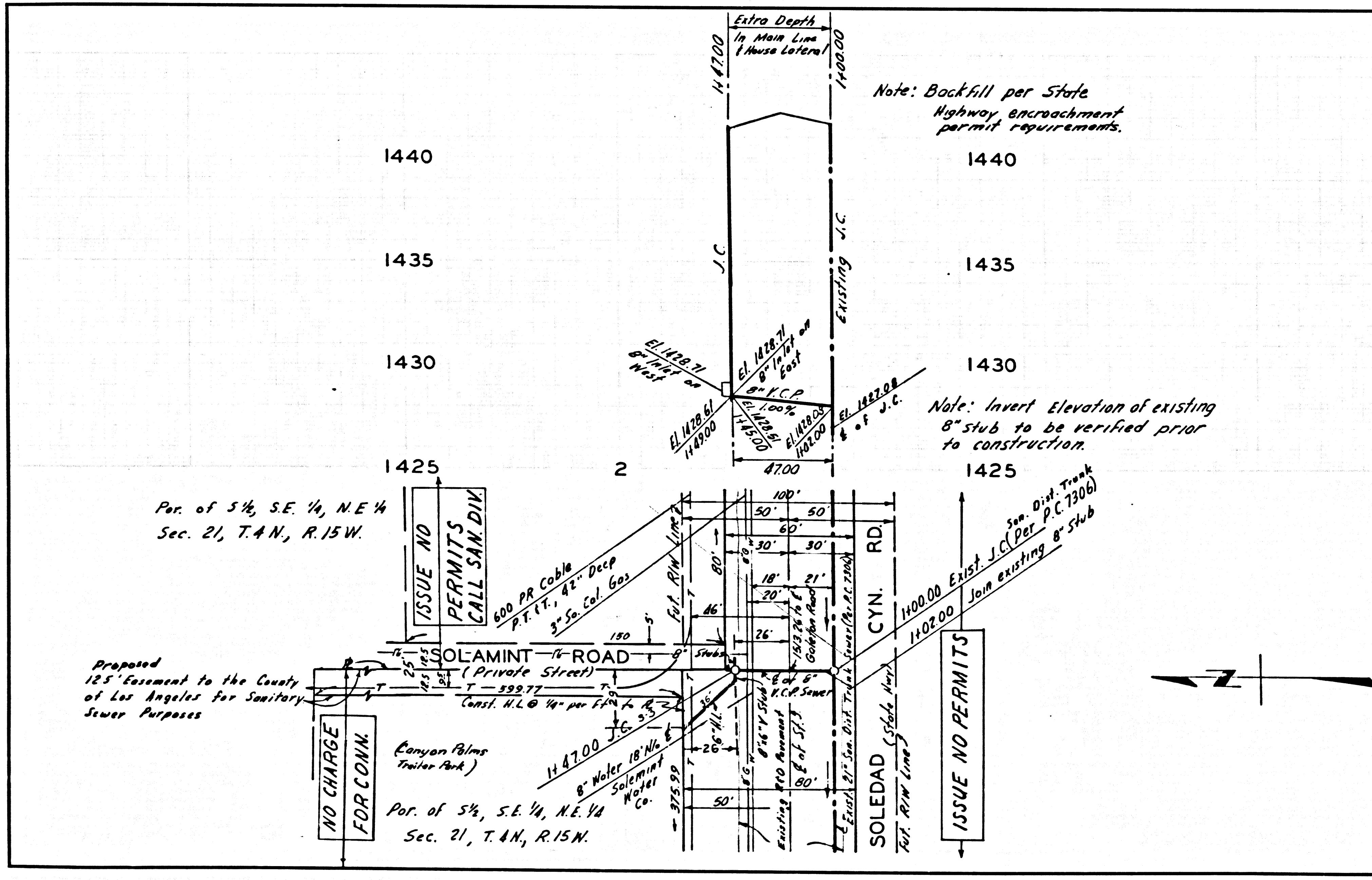
Acceptance of the project.

No connections for the disposal of industrial wastes shall be made to sewers shown on these drawings without written permission from the Chief Engineer and General Manager of the County Sanitation Districts.

**COUNTY OF LOS ANGELES, CALIFORNIA**  
 JOHN A. LAMBIE, COUNTY ENGINEER J. D. PARKHURST, CHIEF ENGINEER  
 CO. SAN. DIST. NO. 8.2  
 APPROVED BY: *[Signature]* DATE: 1-22-70 APPROVED BY: *[Signature]* OFFICE ENGINEER  
 REGIONAL ENGINEER REGIONAL ENGINEER  
 CHECKED BY: *[Signature]* DATE: 1-22-70  
 REG. C. E. NO. 10330

**COLLECT CHARGES AS INDICATED**

J.N. 0369.84



**NOTE TO CONTRACTOR**

Contractor must notify the Pacific (259-5850) Telephone and Telegraph Company at least 24 hours prior to excavation in the vicinity of the Telephone Cable.

Contractor shall notify the Southern California Gas Company at least 48 hours prior to excavation in the vicinity of the Gas line. (259-4080-Ed.388)

P.C.8308 PAGE 2  
**COLLECT CHARGES AS INDICATED**

41558