

B.M. BY 7552 ELEV. 834.107
 R.D. B.M. Top 1" N. of S. C.R. and N.E. cor.
 Kerner Rd. & Canwood Dr. about 60' N.
 1' 00" E. of Int. 250' N. of
 Freeway Bridge 53-345
 MALIBU QUAD. 1965

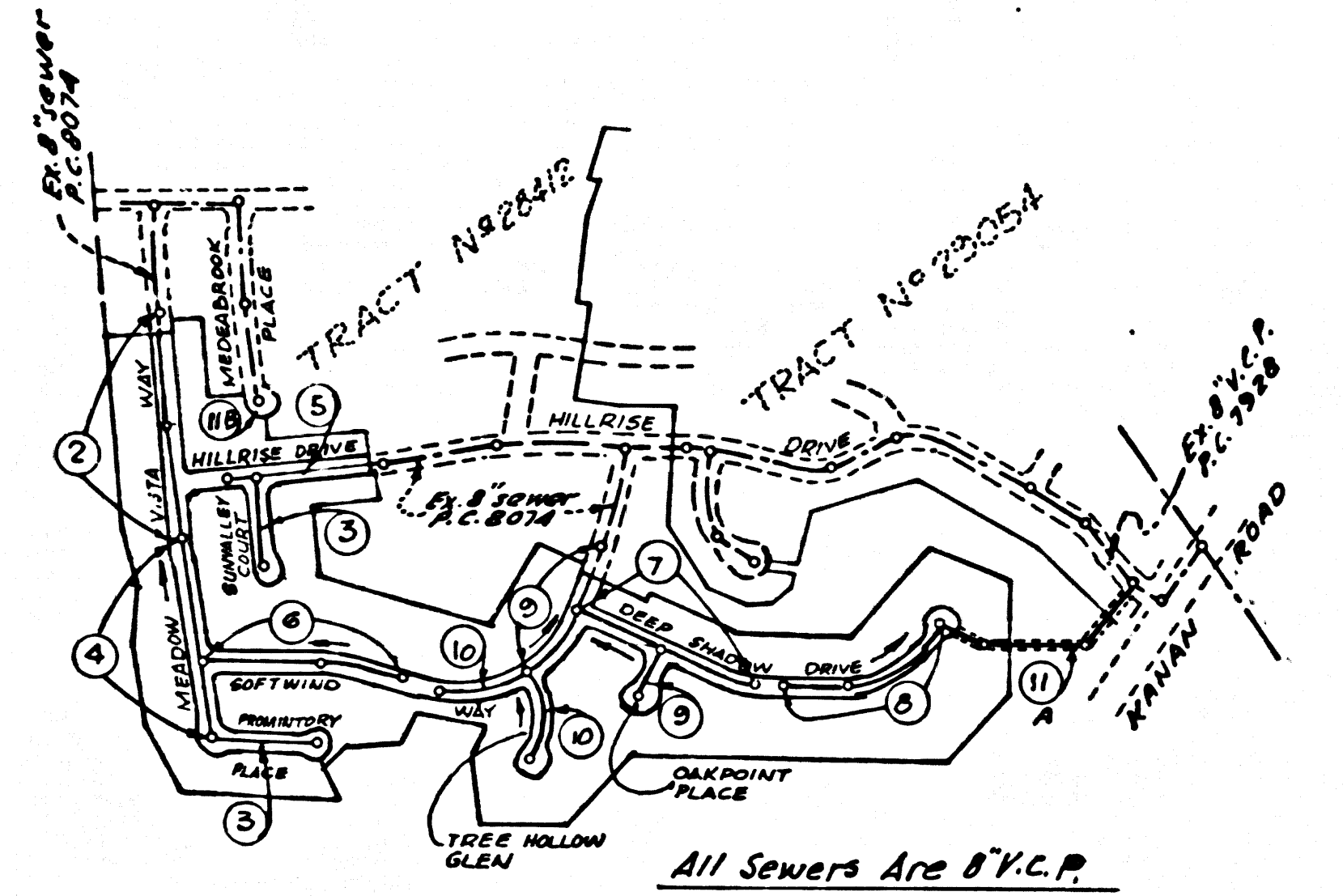
5-16-70 Revised grade between
 Sta. 1+00 and 4+3.81 page 11A
 Frederick J. Jorgensen R.E. 17532
 Approved
 James H. Miller

DOUBLE SCALE
 CALABASAS BLDG. DIST. NO. 9.1

PROFILE ALIGNMENT AND GRADE OF
 SANITARY SEWERS PAGE 1
 TO BE CONSTRUCTED IN

TRACT No 23760
 PRIVATE CONTRACT NO. 8313

W.S. 90
 6 SHEETS, 11 PAGES
 SCALE: VERT. 1" = 4'
 HORIZ. 1" = 40'
 April, 1969
 PREPARED IN THE OFFICES OF
 E. L. PEARSON AND ASSOCIATES
 BY: Joseph K. Danks
 REG. C.E. NO. 13860
 FOR LEGEND SEE PLAN NO. 5-1



INDEX MAP
 TRACT No 23760
 P.C. 8313
 Scale 1" = 600'

THE FOLLOWING COUNTY ENGINEER STANDARD
 PLANS APPLY TO THIS PROJECT

- LEGEND
 MINIMUM EXCAVATION SAFETY REQUIREMENTS
 BEICK MANHOLES
 REINFORCED PRECAST CONCRETE MANHOLES
 MANHOLE FRAME AND COVER
 MANHOLE STEP
 BEDDING FOR SEWER PIPE
 CRADLING AND ENCASEMENT
 WIRE AND TEE SUPPORT
 ALLOWABLE TRENCH WIDTHS
- 5-1
 - 5-2
 - 5-3
 - 5-4
 - 5-5
 - 5-6
 - 5-7
 - 5-21
 - 5-23
 - 5-26
 - 5-33

- NOTES:
- PROVIDE STAKES ON THE PROPERTY LINE OR PROPERTY LINES PRODUCED AT RIGHT ANGLES TO THE SEWER LINE AT THE CENTER LINE OF EACH MANHOLE.
 - NO REPRESENTATIVE OF THE COUNTY ENGINEER WILL SURVEY OR LAY OUT ANY PORTION OF THE WORK.
 - THE PRIVATE ENGINEER SHALL FURNISH THE COUNTY ENGINEER WITH GRADE SHEETS AND STATIONING FOR ALL HOUSE LATERALS "T" AND "T" BRANCHES AND SHALL PROVIDE STAKES FOR THEM AT THEIR PROPER LOCATIONS WITH STATIONING PLAINLY MARKED. ALL HOUSE LATERALS SHALL BE CONSTRUCTED IN A STRAIGHT ALIGNMENT AT RIGHT ANGLES FROM THE MAIN LINE SEWER EXCEPT AS SHOWN ON THE PLANS. HOUSE LATERALS FROM CHIMNEYS SHALL NOT HAVE AN ANGLE OF LESS THAN 45° WITH THE MAIN LINE SEWER. ANY CHANGE IN ALIGNMENT SHALL BE REQUESTED IN WRITING BY THE PRIVATE ENGINEER.
 - THE PRIVATE ENGINEER SHALL FURNISH THE HOUSE LATERAL DEPTH AT THE PROPERTY LINE BELOW THE TOP OF CURB ELEVATION FOR EACH HOUSE LATERAL ON THE GRADE SHEET.
 - NO REVISIONS SHALL BE MADE IN THESE PLANS WITHOUT THE APPROVAL OF THE COUNTY ENGINEER.
 - THE CONTRACTOR SHALL NOTIFY THE CONSTRUCTION DIVISION BY TELEPHONE, MADISON 9-4747, EXT. 81581, AT LEAST TWENTY-FOUR HOURS BEFORE STARTING ANY WORK UNDER THIS CONTRACT.
 - MANHOLES SHALL BE BEICK SEWER STRUCTURES PER 5-27 PRECAST CONCRETE MANHOLES PER 5-3 OR 5-4, EXCEPT AS NOTED.
 - USE STANDARD MANHOLE FRAMES AND COVERS, 5-15, EXCEPT AS NOTED.
 - MANHOLE TOPS IN UNIMPROVED RIGHTS-OF-WAY TO BE SIX INCHES ABOVE FINISHED GRADE.
 - USE EXTRA STRENGTH PIPE. ALL PIPE IS STANDARD DEPTH EXCEPT AS NOTED.
 - VITRIFIED CLAY PIPE JOINTS SHALL BE TYPE "D", 12" DE 5" PER STANDARD SPECIFICATIONS SECTION 208-2.
 - IF A POWER POLE IS WITHIN THREE FEET OF THE SEWER, THE SEWER SHALL BE ENCASED, PER 5-23, TWO FEET ON EACH SIDE FROM THE POINT OF INTERFERENCE.
 - IF DURING THE COURSE OF CONSTRUCTION IT IS DETERMINED THAT THERE IS LESS THAN FOUR FEET OF COVER OVER THE TOP OF A MAIN LINE OR HOUSE LATERAL V.C.P. SEWER WHICH IS NOT INDICATED ON A PLAN, THE PIPE SHALL BE ENCASED PER 5-23, UNLESS OTHERWISE APPROVED BY THE COUNTY ENGINEER.
 - HOUSE LATERALS TO BE CONSTRUCTED WITH INVERTS AT PROPERTY LINE AND FEET BELOW CURB GRADE EXCEPT AS NOTED.
 - RESURFACE ALL TRENCHES WITHIN PAVED AREAS TO MEET L.A. COUNTY ROAD DEPT. OR CALIFORNIA STATE HIGHWAY REQUIREMENTS IN ACCORDANCE WITH PERMITS.
 - SEWERS TO BE AIR PRESSURE TESTED PER SECTION 306-1.5.1.C. OF THE STANDARD SPECIFICATIONS.
 - REFER TO SECTION 7-18.1 OF THE STANDARD SPECIFICATIONS, REGARDING SAFETY ORDERS.
 - "T" OR "T" BRANCHES MAY BE USED FOR CONNECTIONS TO MAINLINE SEWER EXCEPT AS NOTED.
 - ALL JOINTS BETWEEN CAST IRON PIPE AND VITRIFIED CLAY PIPE SHALL BE MADE WITH A RUBBER SLEEVE JOINTS, TYPE "C" OR "D" (WITH BUSHING IF NECESSARY) PER STANDARD SPECIFICATIONS, SECTION 208-2.

NOTE:
 GRADES TO WHICH THIS IMPROVEMENT IS TO BE CONSTRUCTED ARE SHOWN ON PLANS AND PROFILES. GRADE POINTS FOR TOP OF CURBS, CENTER LINE OF STREETS, OR CENTER LINE OF ALLEYS ARE SHOWN BY CIRCLES ON PROFILES. AT ALL POINTS BETWEEN DESIGNATED POINTS THE GRADE SHALL BE ESTABLISHED SO AS TO CONFORM TO A STRAIGHT LINE DRAWN BETWEEN SAID DESIGNATED POINTS. ELEVATIONS ARE IN FEET ABOVE U.S.C. & G.S. SEA LEVEL DATUM OF 1929.
 WORK SHALL BE CONSTRUCTED ACCORDING TO THE STANDARD SPECIFICATIONS FOR PUBLIC WORKS CONSTRUCTION AND SPECIAL PROVISIONS FOR THE CONSTRUCTION OF SANITARY SEWERS DATED JAN 2, 1967, AS REVISED, AND SHALL BE PROSECUTED ONLY IN THE PRESENCE OF THE COUNTY ENGINEER.
 BEFORE WORK CAN BE STARTED, THE CONTRACTOR MUST OBTAIN A PERMIT TO EXCAVATE IN COUNTY STREETS FROM THE L.A. COUNTY ROAD DEPT., DISTRICT OFFICE NO. 3, AND PAY A FEE TO THE COUNTY ENGINEER, ROOM 308, COUNTY ENGINEERING BUILDING, 108 WEST SECOND STREET OR 442-7800 REGIONAL OFFICE, SUFFICIENT TO COVER THE COST OF CONSTRUCTION INSPECTION AND RECORD PLANS.
 APPROVAL OF THIS PLAN BY THE COUNTY OF LOS ANGELES DOES NOT CONSTITUTE A REPRESENTATION AS TO THE ACCURACY OF THE LOCATION OF OR THE EXISTENCE OR NON-EXISTENCE OF ANY UNDERGROUND UTILITY PIPE, OR STRUCTURE WITHIN THE LIMITS OF THIS PROJECT. THIS NOTE APPLIES TO ALL PAGES.
 IF WORK IS TO BE DONE IN A STATE HIGHWAY, A PERMIT MUST BE OBTAINED FROM THE STATE OF CALIFORNIA, DIVISION OF HIGHWAYS, 120 SOUTH SPRING STREET, LOS ANGELES, CALIFORNIA.

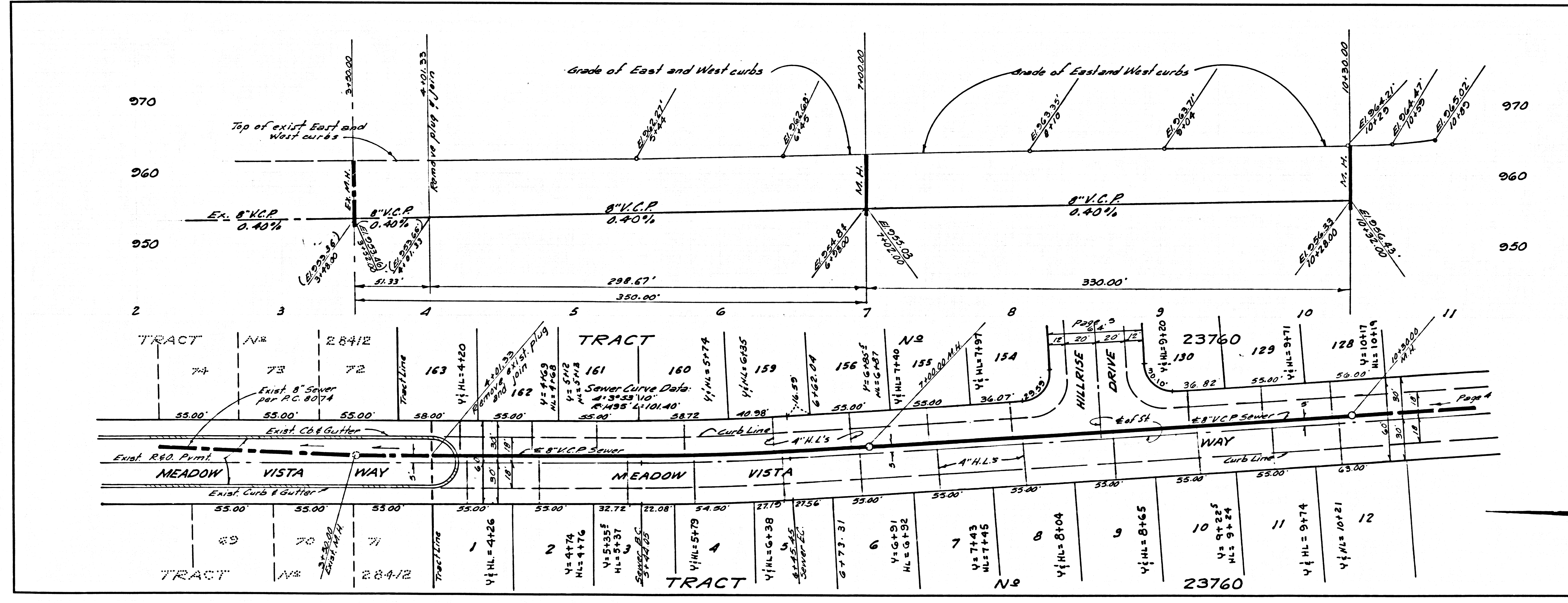
COUNTY OF LOS ANGELES, CALIFORNIA
 JOHN A. LAMBIE, COUNTY ENGINEER
 LAS VIRGINES, MUNICIPAL WATER DISTRICT
 APPROVED BY: H. J. Stokes
 General Manager and Chief Engineer

APPROVED BY: James H. Miller
 REGIONAL ENGINEER
 CHECKED BY: Frederick J. Jorgensen
 REG. C.E. NO. 17532

COLLECT CHARGES
 AS INDICATED

NOTICE TO CONTRACTOR
 The existence and location of any underground utility pipes or structures shown on these plans are obtained by a search of the available records. To the best of my knowledge there are no existing utilities except as shown on these plans. The contractor is required to take due precautionary measures to protect the utility lines shown and any other lines not of record or not shown on these plans.
 REG. C.E. NO. 73247

J.N. 0250.02



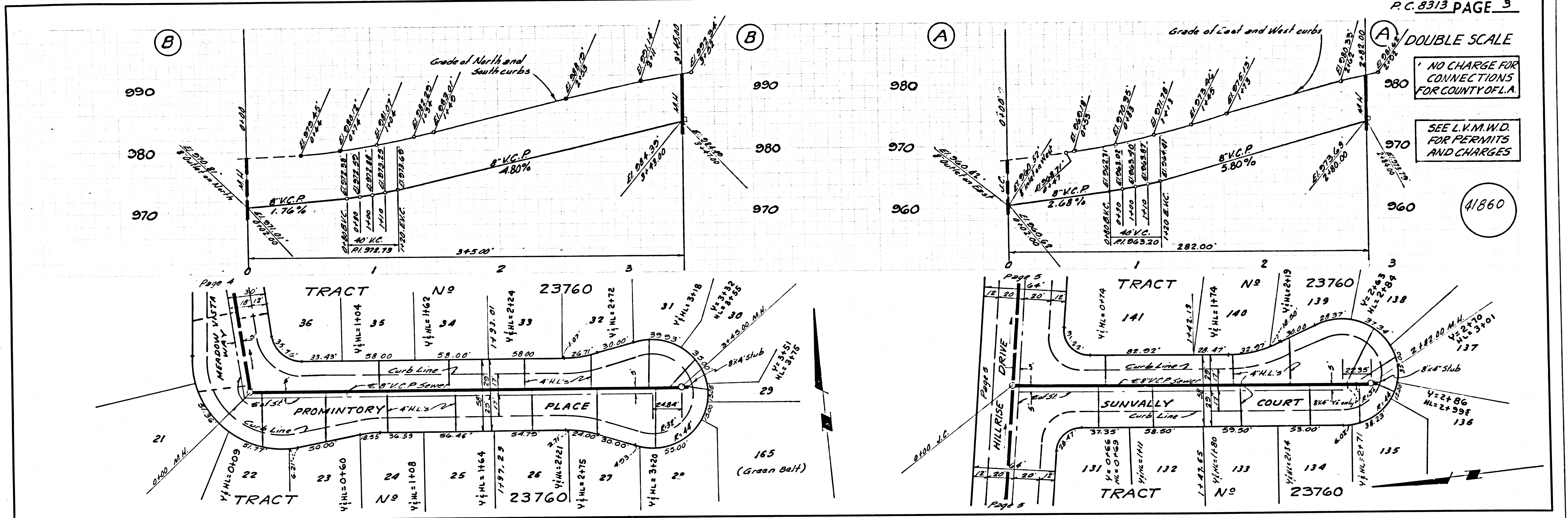
P.C. 8313 PAGE 2

DOUBLE SCALE

NO CHARGE FOR
 CONNECTIONS
 FOR COUNTY OF L.A.

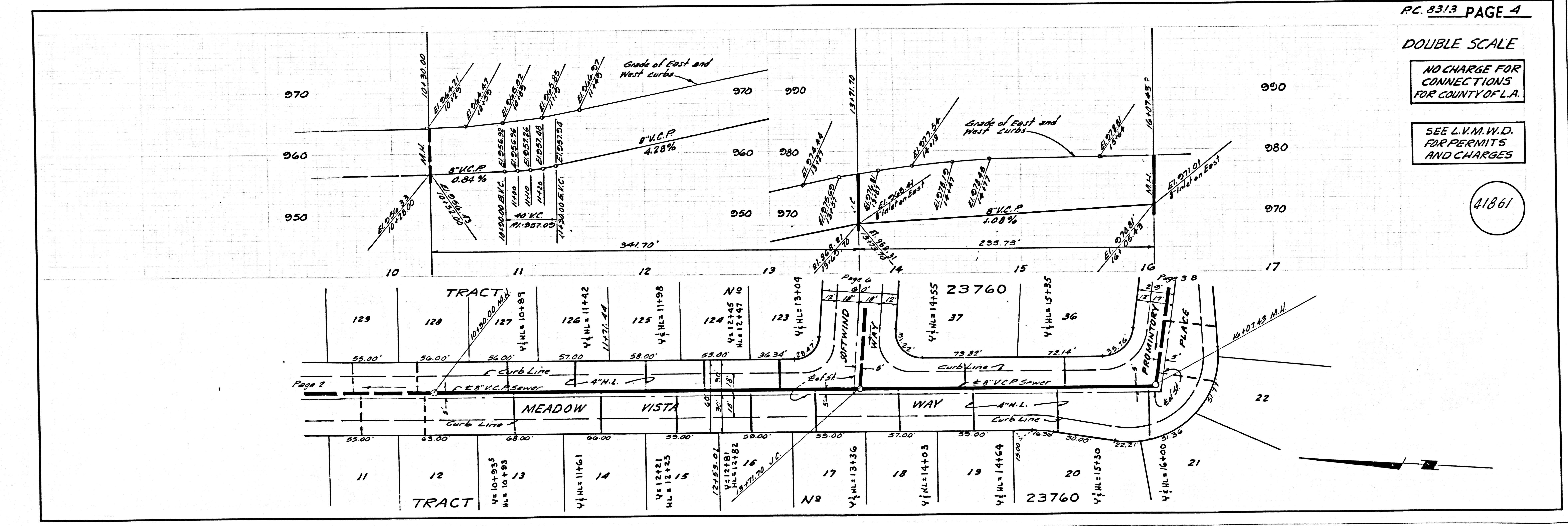
SEE L.V.M.W.D.
 FOR PERMITS
 AND CHARGES

41859



DOUBLE SCALE
 NO CHARGE FOR CONNECTIONS FOR COUNTY OF L.A.
 SEE L.V.M.W.D. FOR PERMITS AND CHARGES

41860



DOUBLE SCALE
 NO CHARGE FOR CONNECTIONS FOR COUNTY OF L.A.
 SEE L.V.M.W.D. FOR PERMITS AND CHARGES

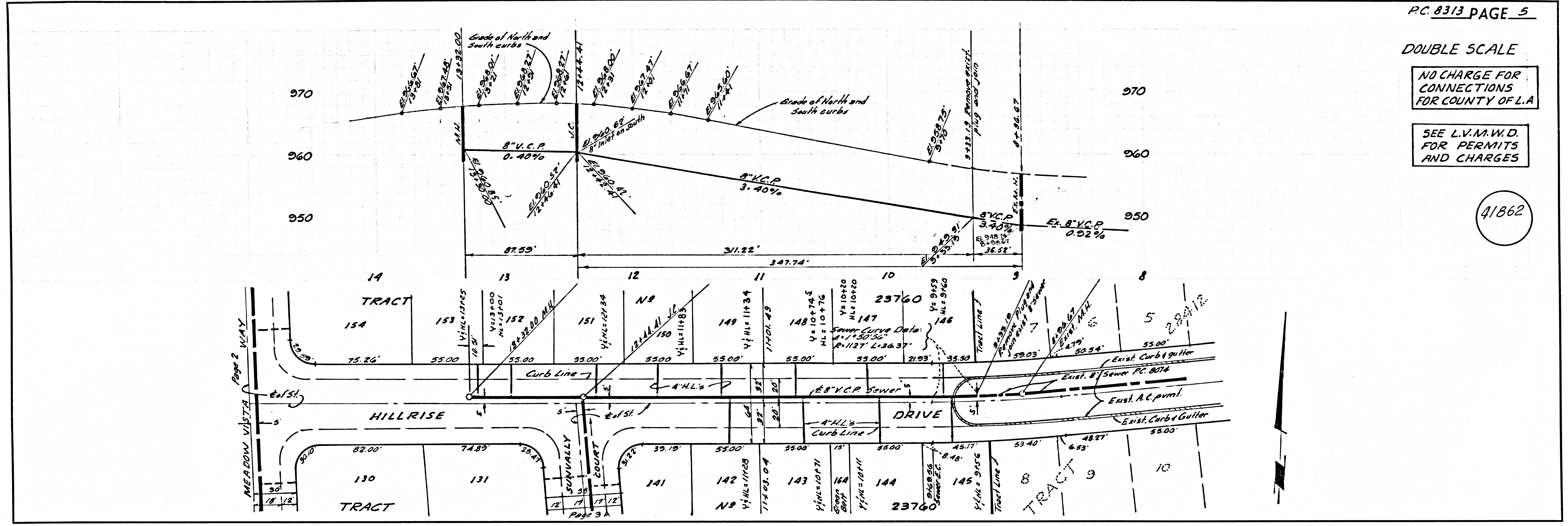
41861

DOUBLE SCALE

NO CHARGE FOR CONNECTIONS FOR COUNTY OF L.A.

SEE L.V.M.W.D. FOR PERMITS AND CHARGES

41862

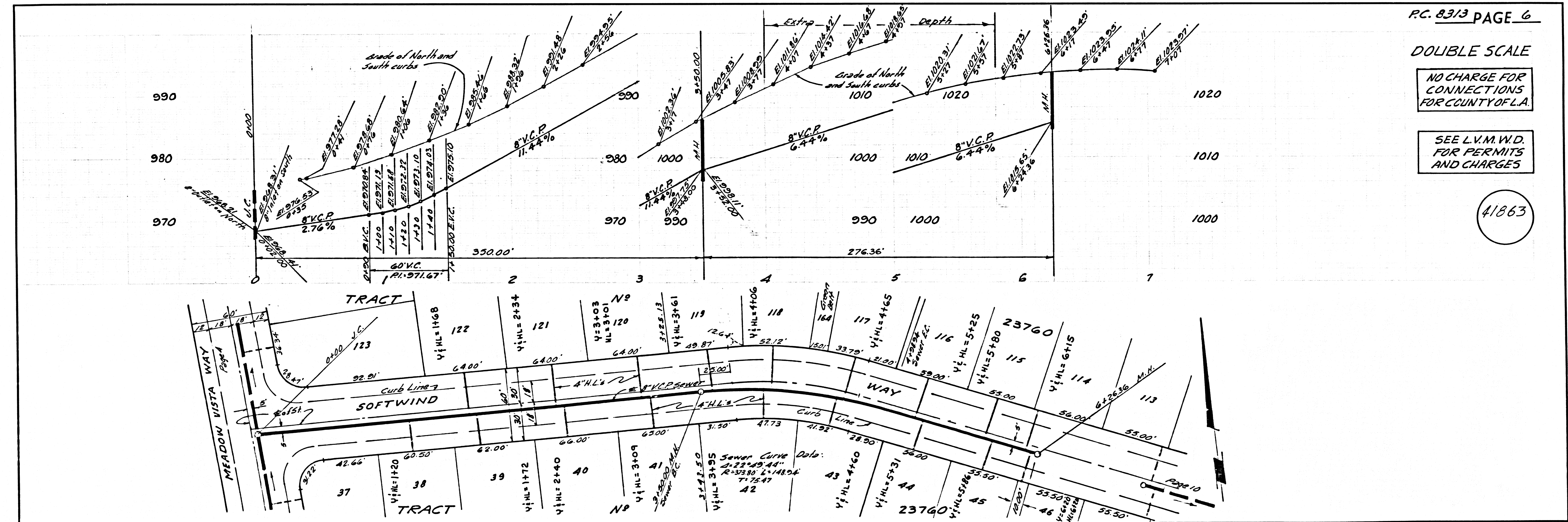


DOUBLE SCALE

NO CHARGE FOR CONNECTIONS FOR COUNTY OF L.A.

SEE L.V.M.W.D. FOR PERMITS AND CHARGES

41863

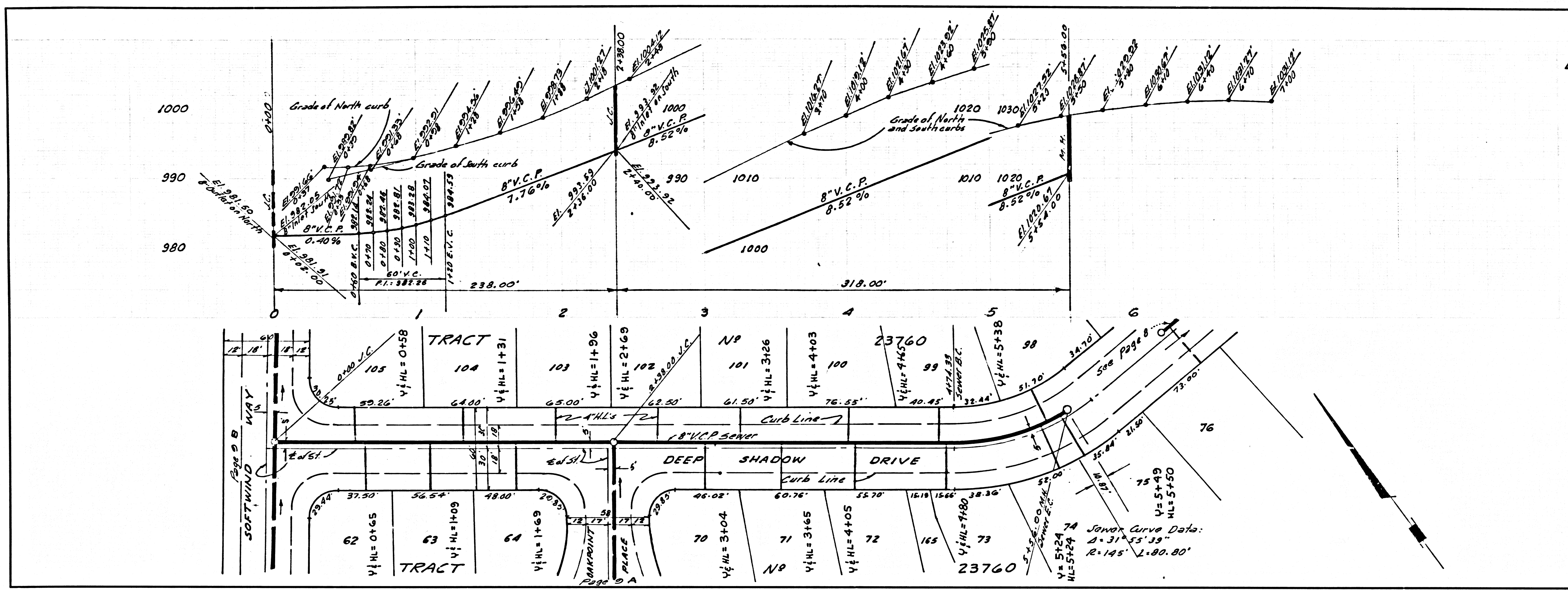


DOUBLE SCALE

NO CHARGE FOR CONNECTIONS FOR COUNTY OF L.A.

SEE L.V.M.W.D. FOR PERMITS AND CHARGES

41866

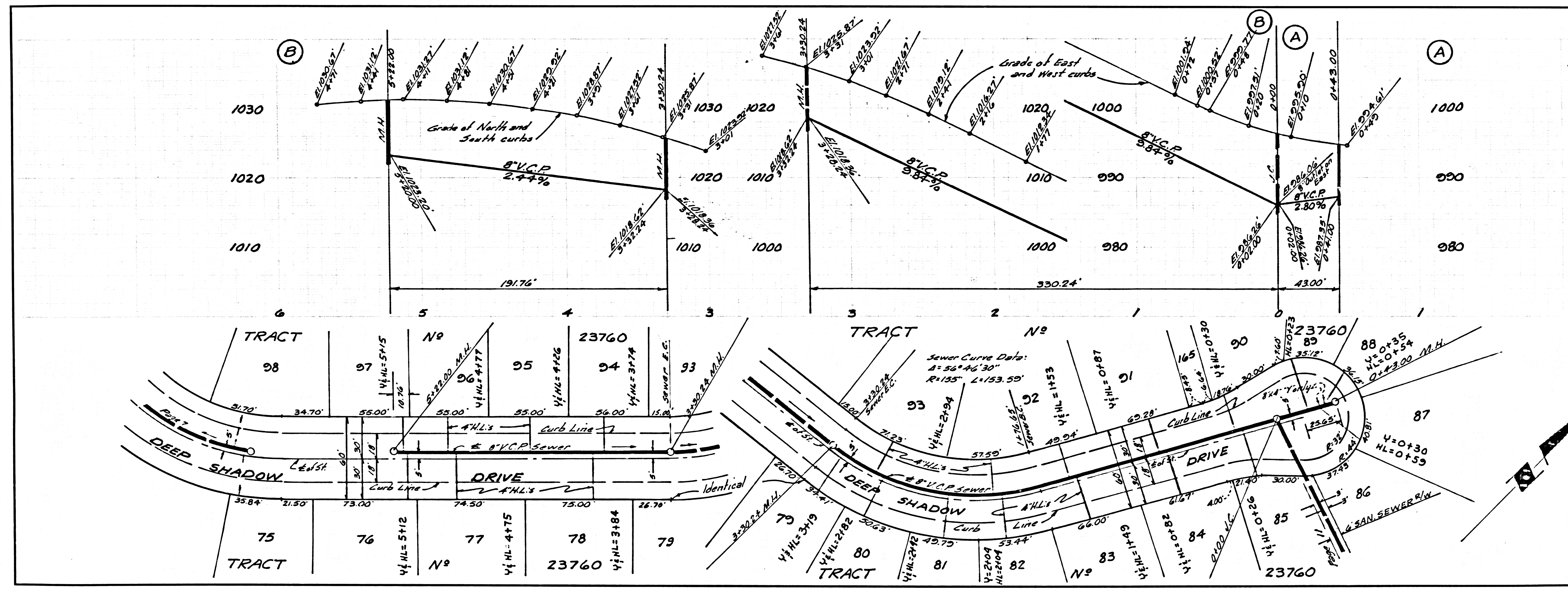


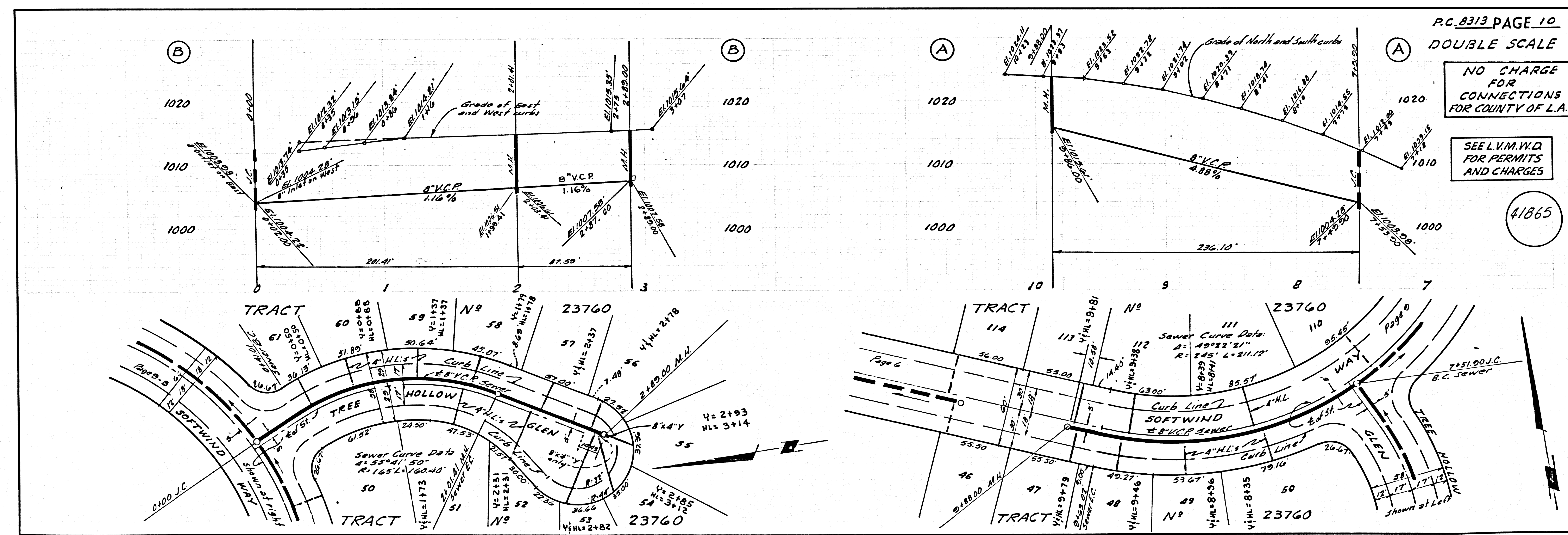
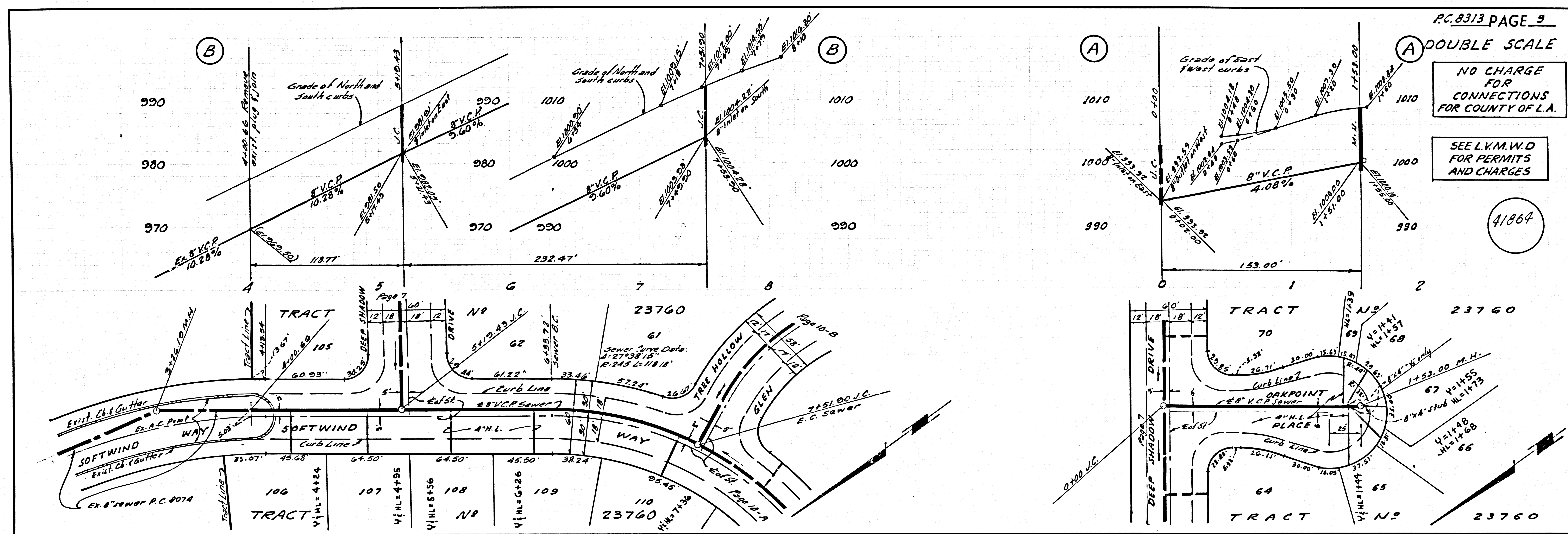
DOUBLE SCALE

NO CHARGE FOR CONNECTIONS FOR COUNTY OF L.A.

SEE L.V.M.W.D. FOR PERMITS AND CHARGES

41867





DOUBLE SCALE

NO CHARGE FOR CONNECTIONS FOR COUNTY OF LA.

SEE L.V.M.W.D FOR PERMITS AND CHARGES

41868

