

B.M. BL 608 ELEV. 1216.346
 U.S.C. 185 Mon. S. and bridge 53-14
 over Alhambra Creek S.W. of S. Blvd. Co.
 18' E. of S. Ferris Ave. & 10' N. of
 Newhall Sta. (1970 1055)
 NEWHALL QUAD. 1965

LOTS 83, 84 & 85 ARE RECREATION
 OR PARK LOTS AND ARE NOT SERVED
 WITH HOUSE LATERALS

19. SPECIAL BACKFILL IN DESIGNATED AREAS -
 (a) BACKFILL TRENCH AND REPLACE OTHER EARTH REMOVED SO AS TO ACHIEVE
 THE NATURAL OR FINISHED GRADES AND SLOPES SHOWN ON THE GRADING
 PLAN APPROVED FOR THIS DEVELOPMENT BY THE BUILDING AND SAFETY
 DIVISION.
 (b) ALL BACKFILL AND EARTH REPLACED SHALL BE COMPACTED TO A MINIMUM
 OF 90% OF MAXIMUM DENSITY PER ASTM STANDARD METHOD OF TEST
 D 1557-57. AS MODELED. ACCEPTANCE CERTIFICATION OF SUCH COMPLETION
 SHALL BE SUBMITTED TO THE CONSTRUCTION DIVISION.

NOTICE TO CONTRACTOR
 The existence and location of any underground pipes or structures
 shown on these plans were obtained by a search of available records.
 To the best of our knowledge there are no existing utilities except
 as shown on these plans.
 The contractor is required to take precautionary measures to
 protect the existing utility lines and any lines not of record or
 not shown on these plans.

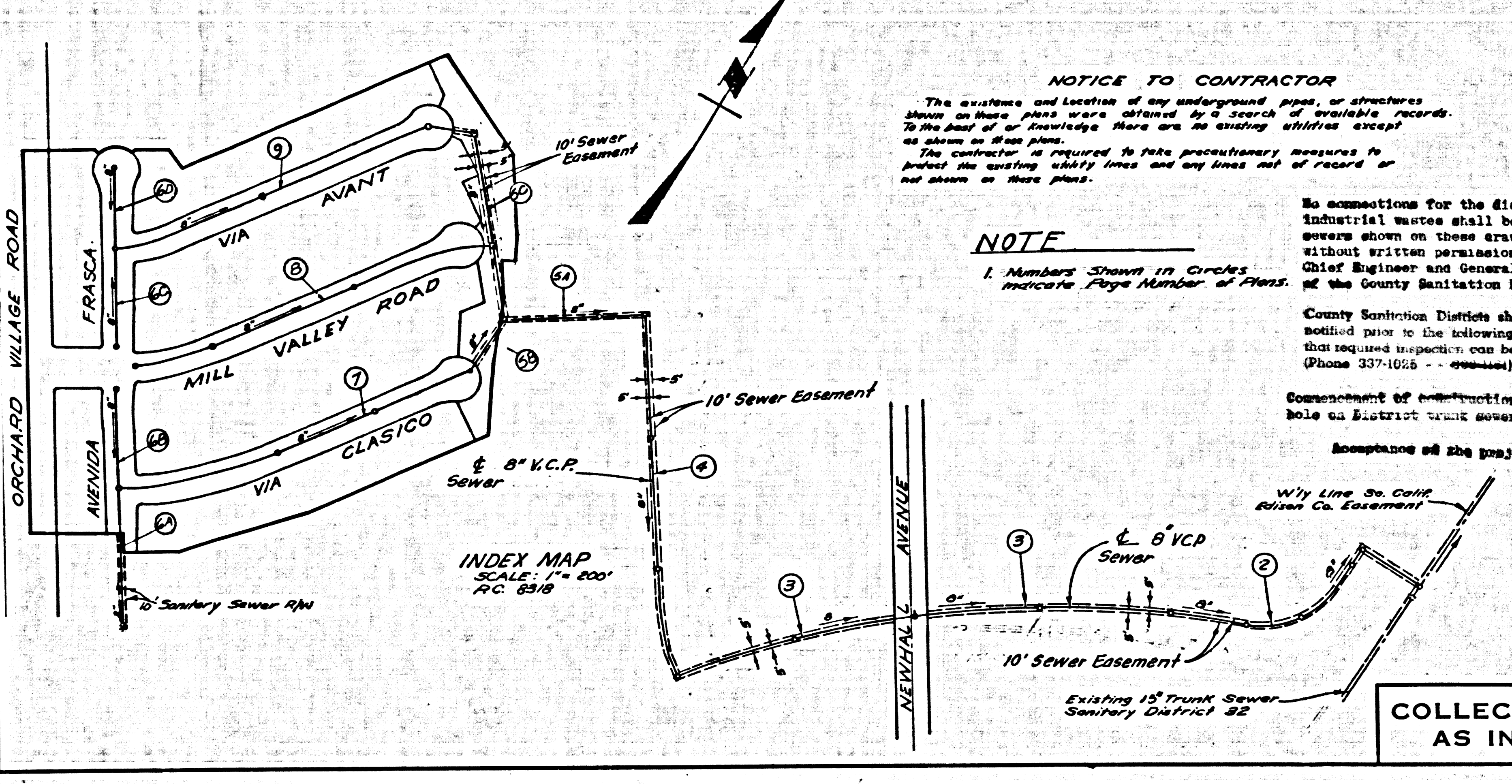
NOTE
 1. Numbers Shown in Circles
 Indicate Page Number of Plans.

No connections for the disposal of
 industrial wastes shall be made to
 sewers shown on these drawings
 without written permission from the
 Chief Engineer and General Manager of
 the County Sanitation Districts.

County Sanitation Districts shall be
 notified prior to the following so
 that required inspection can be made
 (Phone 337-1025 - - - - -)

Completion of construction of main
 line as District trunk sewer.

Acceptance of the project.



NEWHALL BLDG. DIST. NO. 82

- NOTES:
- HOUSE LATERALS TO BE CONSTRUCTED WITH INVERTS AT PROPERTY LINE 4 FEET BELOW CURB GRADE EXCEPT AS NOTED.
 - PROVIDE STAKES ON THE PROPERTY LINE OR PROPERTY LINES PRODUCED AT RIGHT ANGLES TO THE SEWER LINE AT THE CENTER LINE OF EACH MANHOLE.
 - NO REPRESENTATIVE OF THE COUNTY ENGINEER WILL SURVEY OR LAY OUT ANY PORTION OF THE WORK.
 - THE PRIVATE ENGINEER SHALL FURNISH THE COUNTY ENGINEER WITH GRADE SHEETS AND STATIONING FOR ALL HOUSE LATERALS AND "T" OR "T" BRANCHES AND SHALL PROVIDE STAKES FOR THEM AT THEIR PROPER LOCATIONS WITH STATIONING PLAINLY MARKED. ALL HOUSE LATERALS SHALL BE CONSTRUCTED BY A STRAIGHT ALIGNMENT AT RIGHT ANGLES FROM THE MAIN LINE SEWER EXCEPT AS SHOWN ON THE PLANS. HOUSE LATERALS FROM CHIMNEYS SHALL NOT HAVE AN ANGLE OF LESS THAN 45° WITH THE MAIN LINE SEWER. ANY CHANGE IN ALIGNMENT SHALL BE REQUESTED IN WRITING BY THE PRIVATE ENGINEER.
 - THE PRIVATE ENGINEER SHALL FURNISH THE HOUSE LATERAL DEPTH AT THE PROPERTY LINE BELOW THE TOP OF CURB GRADE EXCEPT AS NOTED FOR EACH HOUSE LATERAL ON THE GRADE SHEET.
 - NO REVISIONS SHALL BE MADE IN THESE PLANS WITHOUT THE APPROVAL OF THE COUNTY ENGINEER.
 - THE CONTRACTOR SHALL NOTIFY THE CONSTRUCTION DIVISION BY TELEPHONE, MADISON 9-4727, EXT. 8121, AT LEAST TWENTY-FOUR HOURS BEFORE STARTING ANY WORK UNDER THIS CONTRACT.
 - ALL STRUCTURES SHALL BE EITHER BRICK MANHOLES PER S-3 OF PRECAST CONCRETE MANHOLES PER S-36 - - - EXCEPT AS NOTED.
 - "T" OR "T" BRANCHES MAY BE USED FOR CONNECTIONS TO MAINLINE SEWERS EXCEPT AS NOTED.
 - MANHOLE TOPS IN UNIMPROVED RIGHTS OF WAY TO BE SIX INCHES ABOVE FINISHED GRADE.
 - USE EXTRA STRENGTH PIPE. ALL PIPE IS STANDARD DEPTH EXCEPT AS NOTED.
 - VITRIFIED CLAY PIPE JOINTS SHALL BE TYPE "B", "T", OR "O" PER STANDARD SPECIFICATIONS SECTION 306.2.
 - IF A POWER POLE IS WITHIN THIRTY FEET OF THE SEWER, THE SEWER SHALL BE ENCASED, PER S-25, TWO FEET ON EACH SIDE FROM THE POINT OF INTERFERENCE.
 - IF DURING THE COURSE OF CONSTRUCTION IT IS DETERMINED THAT THERE IS LESS THAN FOUR FEET OF COVER OVER THE TOP OF A MAIN LINE OR HOUSE LATERAL Y.C.P. SEWER WHICH IS NOT INDICATED ON THE PLANS, THE PIPE SHALL BE ENCASED PER S-25, UNLESS OTHERWISE APPROVED BY THE COUNTY ENGINEER.
 - RESPECTFULLY ALL TRENCHES WHICH HAVE BEEN PAVED AREAS TO MEET L.A. COUNTY ROAD DEPT. OR CALIFORNIA STATE HIGHWAY REQUIREMENTS IN ACCORDANCE WITH PERMITS.
 - SEWERS TO BE TESTED FOR LEAKAGE PER SECTION 306.2.2.7 OF THE STANDARD SPECIFICATIONS.
 - REFER TO SECTION 7.18.1 OF THE STANDARD SPECIFICATIONS, REGARDING SAFETY DEVICES.
 - ALL JOINTS BETWEEN CAST IRON PIPE AND VITRIFIED CLAY PIPE SHALL BE MADE WITH A RUBBER SLEEVE JOINT, TYPE "C" OR "D", WITH WASHING IF NECESSARY PER STANDARD SPECIFICATIONS, SECTION 306.2.

THE FOLLOWING LATEST REVISED STANDARD PLANS ON FILE IN THE OFFICE OF THE COUNTY ENGINEER SHALL APPLY IN THE CONSTRUCTION OF THIS PROJECT.

MINIMUM PUBLIC SAFETY REQUIREMENTS	S-1
BRICK MANHOLE	S-3
PRECAST CONCRETE MANHOLE	S-36
MANHOLE FRAME AND COVER	S-37
STANDARD MANHOLE STEP	S-38
SEWING FOR SEWER PIPE	S-39
CHASING AND ENCASEMENT	S-40
WY OF THE SUPPORT	S-41
ALLOWABLE TRENCH WIDTHS	S-42

The following County San. Dist. Standard plans apply in the construction of the project -
 STD. MAN. & JUNCTION CHAMBER, TYPE "A" S-4-201
 STD. MH. FRAME & COVER S-4-202

PROFILE, ALIGNMENT AND GRADE OF
SANITARY SEWERS P.C. 8318
 PAGE 1

CONSTRUCTED IN
TRACT N° 30601
 AND OTHER RIGHTS OF WAY

PRIVATE CONTRACT NO. 8318

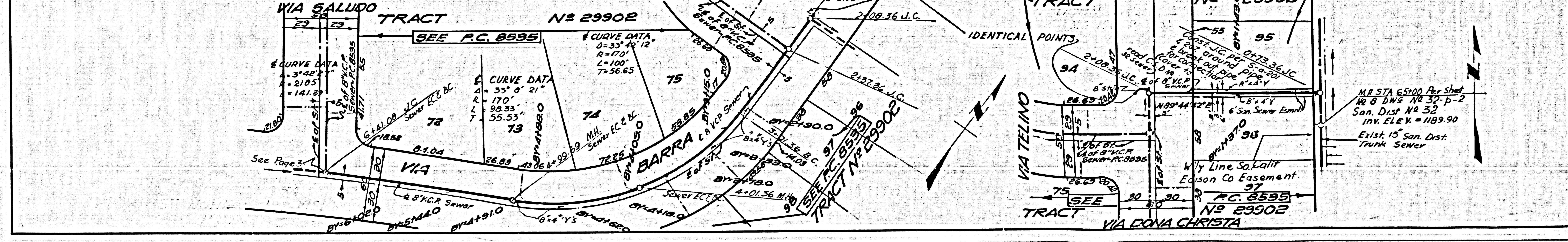
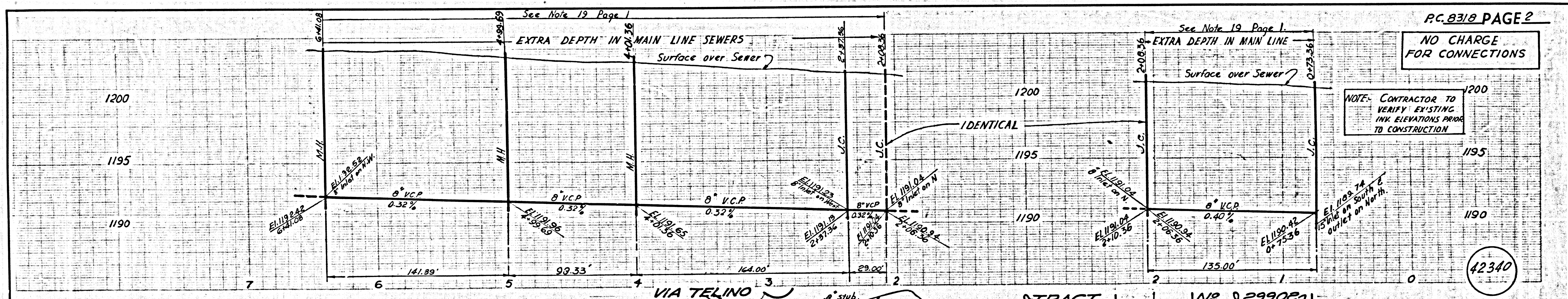
W.S. 62
 5 SHEETS; 9 PAGES
 SCALE: VERT. 1" = 4'
 HORIZ. 1" = 40' OCT. 1970
 PREPARED IN THE OFFICE OF THE
 COUNTY ENGINEER
 1500 BURBANK BOULEVARD
 SAN DIEGO, CALIFORNIA 92104
 REG. C. E. NO. 9553

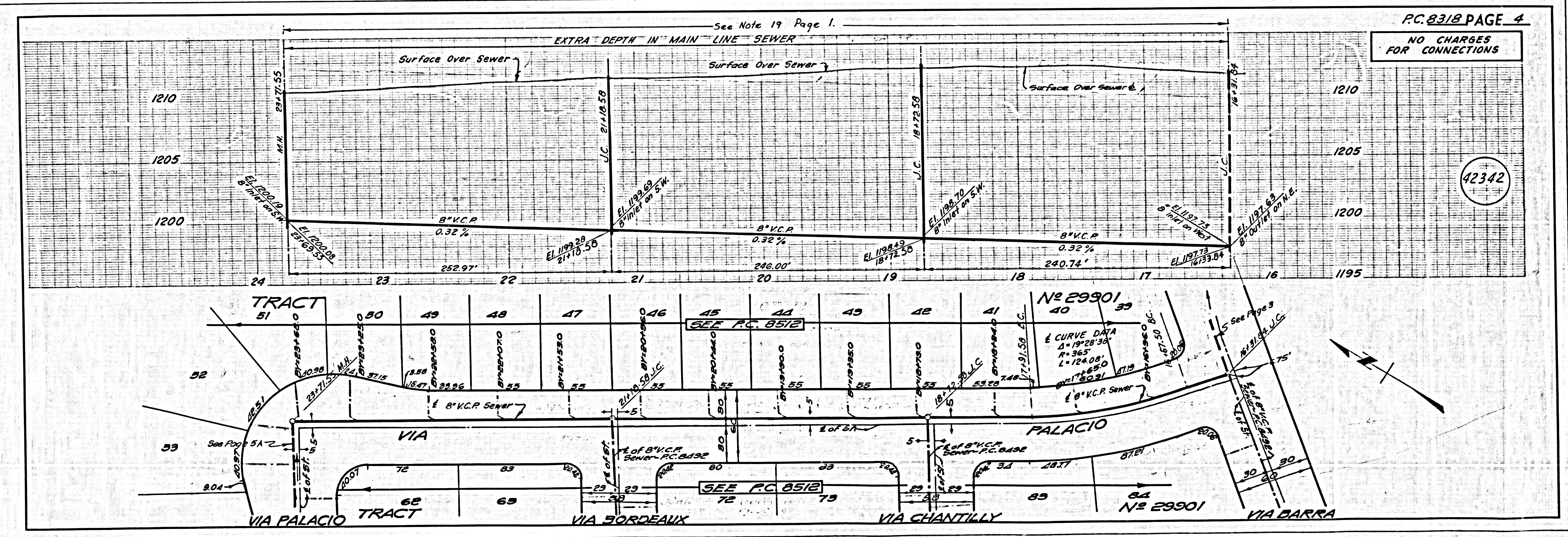
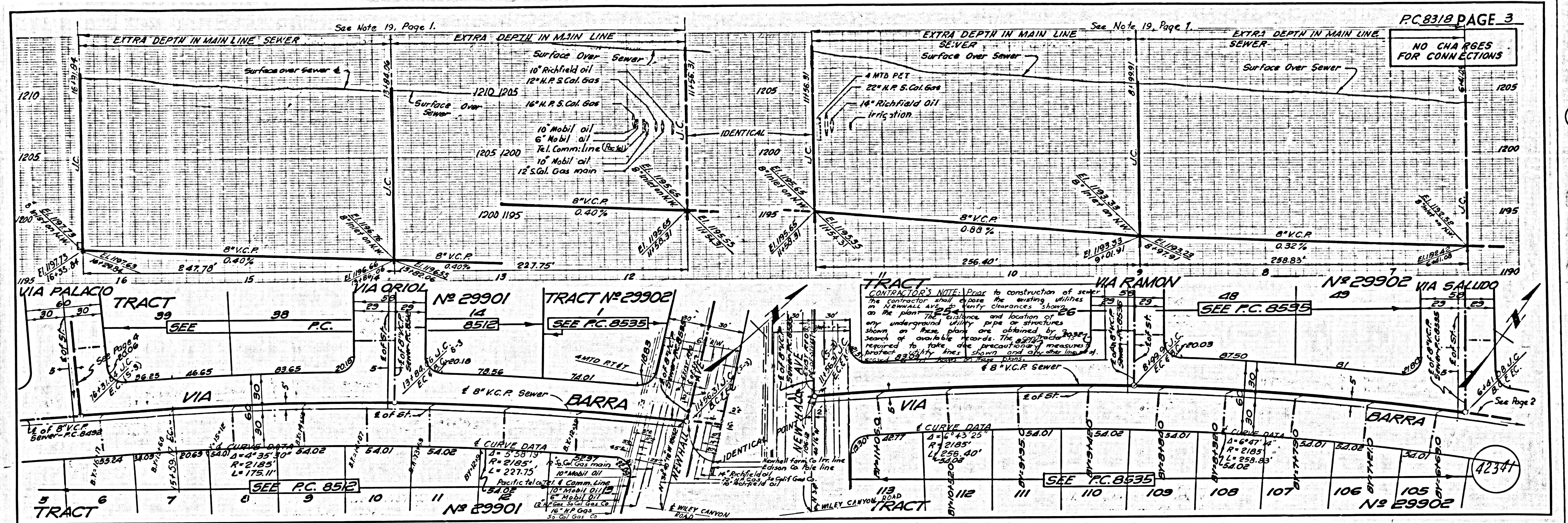
NOTE: GRADES TO WHICH THIS IMPROVEMENT IS TO BE CONSTRUCTED ARE SHOWN ON PLANS AND PROFILES. GRADE POINTS FOR TOP OF CURB, CENTER LINE OF STREET, OR CENTER LINE OF ALLEYS ARE SHOWN BY CIRCLES ON PROFILES. AT ALL POINTS BETWEEN DESIGNATED POINTS THE GRADE SHALL BE ESTABLISHED SO AS TO CONFORM TO A STRAIGHT LINE DRAWN BETWEEN SAID DESIGNATED POINTS. REVISIONS ARE IN PENCIL ABOVE U.S.C. & G.S. SEA LEVEL DATUM OF 1929. WORK SHALL BE CONSTRUCTED ACCORDING TO THE STANDARD SPECIFICATIONS FOR PUBLIC WORKS CONSTRUCTION (1970 EDITION) AND COUNTY ENGINEER SPECIAL PROVISIONS 1970, DATED APRIL 7, 1970. THE CONSTRUCTION OF SANITARY SEWERS. BEFORE WORK CAN BE STARTED, THE CONTRACTOR MUST OBTAIN A PERMIT TO EXCAVATE IN COUNTY STREETS FROM THE L.A. COUNTY ROAD DEPT., DISTRICT OFFICE NO. 27, AND PAY A FEE TO THE COUNTY ENGINEER, ROOM 328, COUNTY ENGINEERING DIVISION, 1500 BURBANK STREET, SAN DIEGO, CALIFORNIA 92104. REGIONAL OFFICE, SUFFICIENT TO COVER THE COST OF CONSTRUCTION INSPECTION AND RECORD PLANS. APPROVAL OF THIS PLAN BY THE COUNTY OF LOS ANGELES DOES NOT CONSTITUTE A REPRESENTATION AS TO THE ACCURACY OF THE LOCATION OF OR THE EXISTENCE OR NON-EXISTENCE OF ANY UNDERGROUND UTILITY PIPE, OR STRUCTURE WITHIN THE LIMITS OF THIS PROJECT. THIS NOTE APPLIES TO ALL PAGES. IF WORK IS TO BE DONE IN A STATE HIGHWAY, A PERMIT MUST BE OBTAINED FROM THE STATE OF CALIFORNIA, DIVISION OF HIGHWAYS, 130 SOUTH BRIDGE STREET, LOS ANGELES, CALIFORNIA.

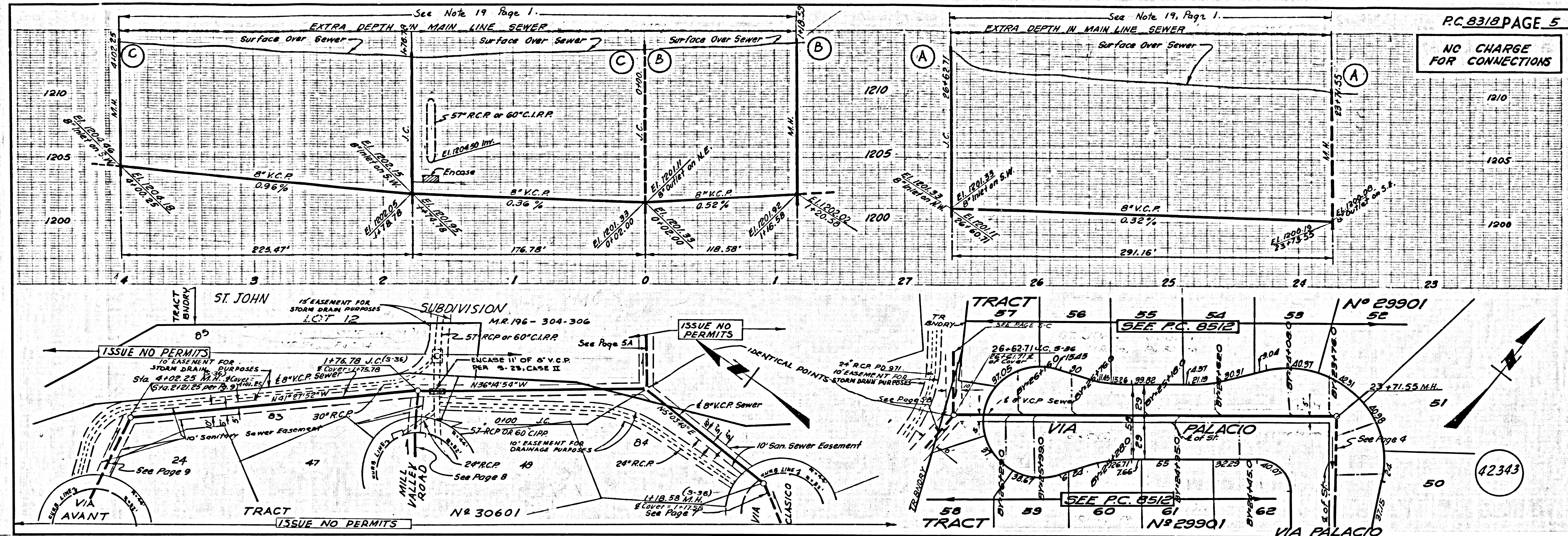
COUNTY OF LOS ANGELES, CALIFORNIA
 JOHN A. LAMBIE, COUNTY ENGINEER J. D. PARKHURST, CHIEF ENGINEER
 CO. SAN DIST. NO. 32
 APPROVED BY [Signature] APPROVED BY [Signature]
 REGIONAL ENGINEER DATE 11-4-70 OFFICE ENGINEER

CHECKED BY [Signature] 11-4-70
 REG. C. E. NO. 14390 DATE

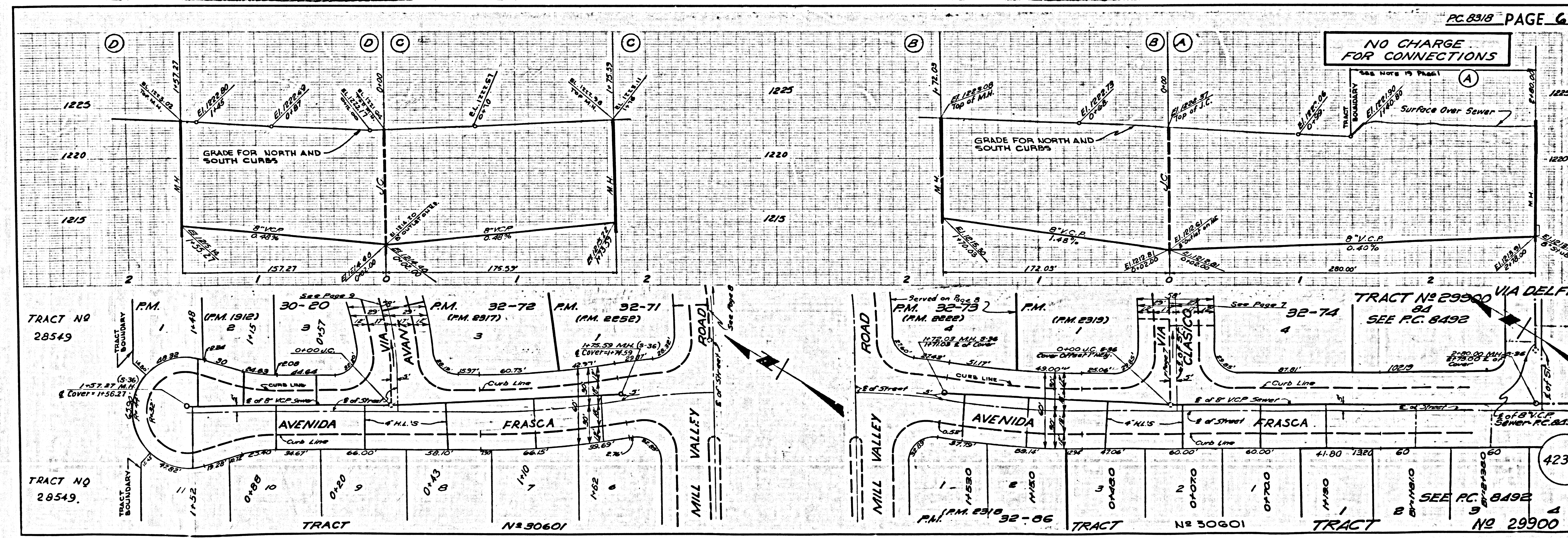
42339
 JN 025002



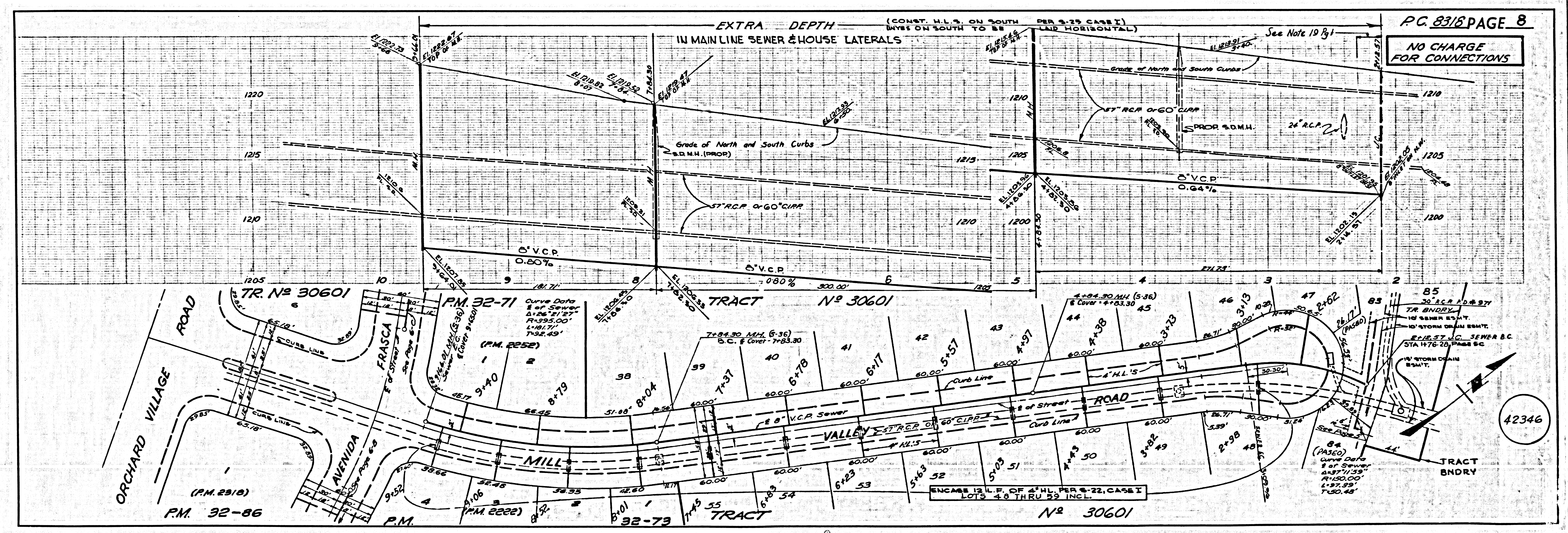
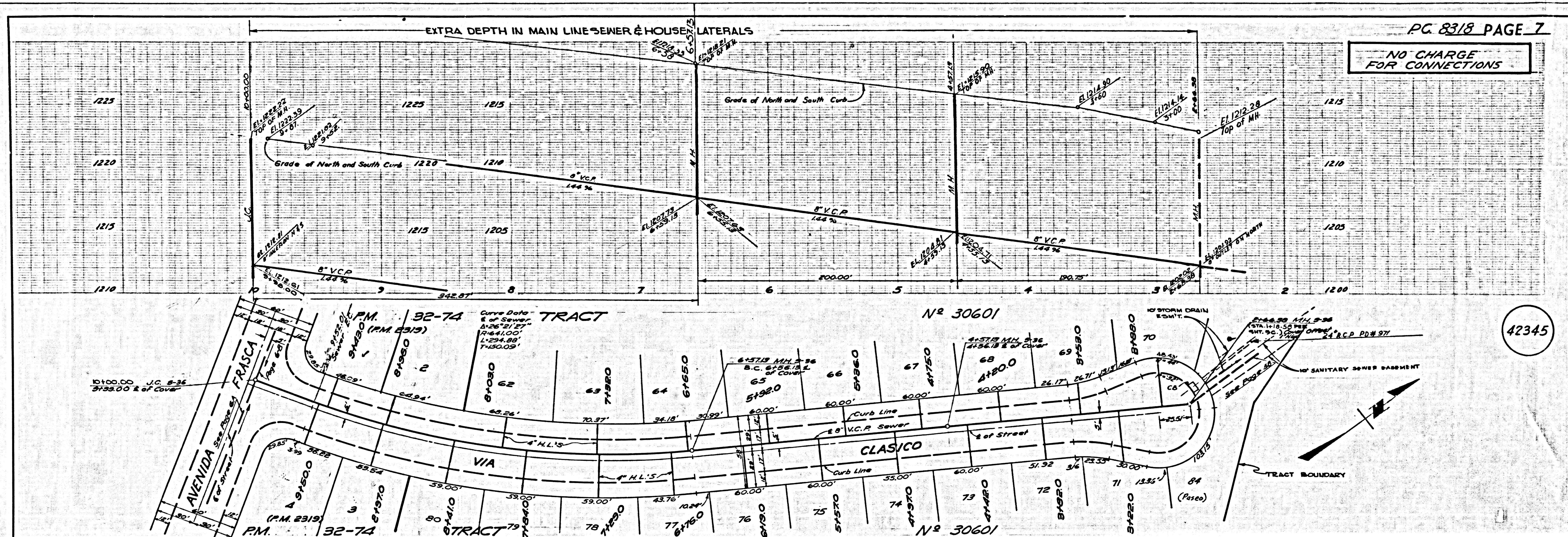




L.A. COUNTY SEWER SHEET NO. 2 SOUTHERN CALIFORNIA BLUEPRINT CO. 7835 11/80



L.A. COUNTY SEWER SHEET NO. 2 SOUTHERN CALIFORNIA BLUEPRINT CO. 7835 11/80



NO CHARGE FOR CONNECTIONS

