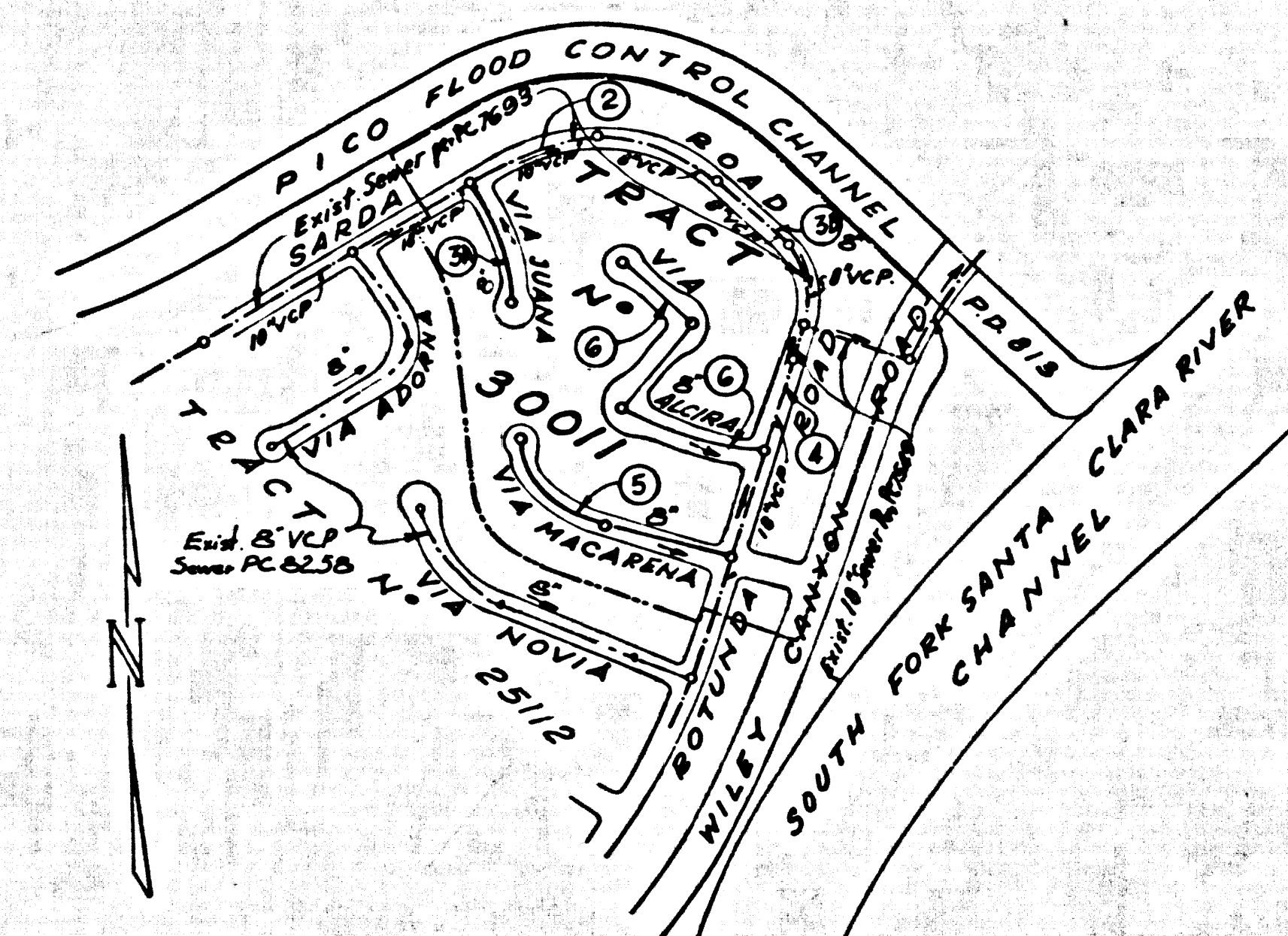


B.M. S.L. 642 ELEV. 1262.07
 ROAD DEPT. B.M. W/ SIDE CONC. BASE
 AT THE COR. TOLSON HIGH TENSION
 TOWER #N-37343-3235' SR. ELYONS AVE.
 130 E. WILEY CANYON RD.
 NEWHALL QUAD. 1958

THE FOLLOWING COUNTY ENGINEER STANDARD PLANS
 APPLY TO THIS PROJECT

LEGEND	
MINIMUM PUBLIC SAFETY REQUIREMENTS	S-1
BRICK MANHOLE	S-2
NON REINFORCED PRECAST CONC. MANHOLE	S-3
REINFORCED PRECAST CONC. MANHOLE	S-4
RECONSTRUCTION OF BRICK MANHOLE TOPS	S-12
MANHOLE FRAME AND COVER	S-15
STANDARD MANHOLE STEP	S-17
BEDDING FOR SEWER PIPE	S-19
CRADLES & ENCASEMENT	S-23
WYE & TEE SUPPORT	S-26
WYE SADDLE-HOUSE LATERAL	S-28
ALLOWABLE TRENCH WIDTHS	S-33
CHIMNEY PIPE AND BASE	S-37



KEY MAP
 SCALE: 1" = 400'
 P.C. 8321
 TR. 30011
 NOTE: NUMBER IN CIRCLE INDICATES PAGE NUMBER

No connections for the disposal of
 industrial wastes shall be made to
 sewers shown on these drawings
 without written permission from the
 Chief Engineer and General Manager
 of the County Sanitation Districts.

GRADING TO BE DONE PRIOR TO
 SEWER CONSTRUCTION

LOTS THAT DO NOT HAVE SERVICE:
 LOT 87, IS RESTRICTED USE FOR
 WALKS, TREES, PLANTING AND LAND-
 SCAPING.

DOUBLE SCALE
 NEWHALL BLDG. DIST. NO. 82

- NOTES
- PROVIDE STAKES ON THE PROPERTY LINE OR PROPERTY LINES PRODUCED AT RIGHT ANGLES TO THE SEWER LINE AT THE CENTER LINE OF EACH MANHOLE.
 - NO REPRESENTATIVE OF THE COUNTY ENGINEER WILL SURVEY OR LAY OUT ANY PORTION OF THE WORK.
 - THE PRIVATE ENGINEER SHALL FURNISH THE COUNTY ENGINEER WITH GRADE SHEETS AND STATIONING FOR ALL HOUSE LATERALS AND YOE BRANCHES AND SHALL PROVIDE STAKES FOR THEM AT THEIR PROPER LOCATIONS WITH STATIONING PLAINLY MARKED. ALL HOUSE LATERALS SHALL BE CONSTRUCTED IN A STRAIGHT ALIGNMENT AT RIGHT ANGLES FROM THE MAIN LINE SEWER EXCEPT AS SHOWN ON THE PLANS. HOUSE LATERALS FROM CHIMNEYS SHALL NOT HAVE AN ANGLE OF LESS THAN 45° WITH THE MAIN LINE SEWER. ANY CHANGE IN ALIGNMENT SHALL BE REQUESTED BY WRITING BY THE PRIVATE ENGINEER.
 - THE PRIVATE ENGINEER SHALL FURNISH THE HOUSE LATERAL DITCH AT THE PROPERTY LINE BELOW THE TOP OF CURB ELEVATION FOR EACH HOUSE LATERAL ON THE GRADE SHEET.
 - NO REVISIONS SHALL BE MADE IN THESE PLANS WITHOUT THE APPROVAL OF THE COUNTY ENGINEER.
 - THE CONTRACTOR SHALL NOTIFY THE CONSTRUCTION DIVISION BY TELEPHONE, MADISON 9-5707, EXT. 81281, AT LEAST TWENTY-FOUR HOURS BEFORE STARTING ANY WORK UNDER THIS CONTRACT.
 - ALL STRUCTURES SHALL BE EITHER BRICK MANHOLES PER S-2 OR PRECAST CONCRETE MANHOLES PER S-3 OR S-4 EXCEPT AS NOTED.
 - ALL JOINTS BETWEEN CAST IRON PIPE AND VITRIFIED CLAY PIPE SHALL BE MADE WITH A RUBBER DRIVE JOINT, TYPE "C" OR "D", (WITH BOLTING AS NECESSARY) PER STANDARD SPECIFICATIONS SECTION 208-2.
 - MANHOLE TOPS ON UNIMPROVED PORTS OF WAY TO BE 22 INCHES ABOVE FINISHED GRADE.
 - USE 8 IN. STRENGTH PIPE. ALL PIPE IS STANDARD DITCH EXCEPT AS NOTED.
 - WITHEDED CLAY PIPE JOINTS SHALL BE TYPE "B" WITH STAIR STEPS PER STANDARD SPECIFICATIONS SECTION 208-2.
 - IF A POWER POLE IS WITHIN THREE FEET OF THE SEWER, THE SEWER SHALL BE ENCASED, PER S-25, TWO FEET ON EACH SIDE FROM THE POINT OF INTERFERENCE.
 - IF DURING THE COURSE OF CONSTRUCTION IT IS DETERMINED THAT THERE IS LESS THAN FOUR FEET OF COVER OVER THE TOP OF A MAIN LINE OR HOUSE LATERAL V.C.P. SEWER WHICH IS NOT INDICATED ON THE PLANS, THE PIPE SHALL BE ENCASED PER S-25, UNLESS OTHERWISE APPROVED BY THE COUNTY ENGINEER.
 - HOUSE LATERALS TO BE CONSTRUCTED WITH INVERTS AT PROPERTY LINE 6 FEET BELOW CURB GRADE EXCEPT AS NOTED.
 - RESURFACE ALL TRENCHES WITHIN PAVED AREAS TO MEET L.A. COUNTY ROAD DEPT. OR CALIFORNIA STATE HIGHWAY REQUIREMENTS IN ACCORDANCE WITH PERMITS.
 - SEWERS TO BE TESTED FOR LEAKAGE PER SEC. 206-2.3.3 OF STANDARD SPECIFICATIONS.
 - REFER TO SEC. 206-2.1 OF THE STD. SPECIFICATIONS REGARDING EMERTY PROOF.
 - TEE OR WYE BRANCHES MAY BE USED FOR CONNECTION TO MAIN LINE SEWER EXCEPT AS NOTED.
- County Sanitation Districts shall be notified seven (7) days following the date of the above mentioned work on grade (Phone 357-1225 or 466-8000)
- Accepted on the project:

NOTICE TO CONTRACTOR

The existence and location of any underground utility pipes or structures shown on these plans are obtained by a search of the available records. To the best of my knowledge there are no existing utilities except as shown on these plans. The contractor is required to take due precautionary measures to protect the utility lines shown and any other lines not of record or not shown on these plans.

Richard F. Madson
 DATE: 12/16/64
 REG. 16744

COLLECT CHARGES
 AS INDICATED

PROFILE, ALIGNMENT AND GRADE OF
 SANITARY SEWERS PAGE 1

TO BE CONSTRUCTED IN
 TRACT N° 30011

PRIVATE CONTRACT NO. 8321

252-5-121
 W.S. 62

3 SHEETS, 6 PAGES

SCALE: VERT. 1" = 4' HORIZ. 1" = 40'

DECEMBER, 1964

PREPARED IN THE OFFICES OF

V.T.N.-LOS ANGELES

5919 VAN NUYS BLVD. VAN NUYS, CALIF.

By *Richard F. Madson*

REG. C. E. NO. 16744

FOR LEGEND SEE PLAN NO. S-1

NOTES

GRADE TO WHICH THE IMPROVEMENT IS TO BE CONSTRUCTED ARE SHOWN ON PLANS AND PROFILES. GRADE POINTS FOR TOP OF CURB, CENTER LINE OF STREETS, OR CENTER LINE OF ALLEYS ARE SHOWN BY CIRCLES ON PROFILES. AT ALL POINTS BETWEEN DESIGNATED POINTS THE GRADE SHALL BE ESTABLISHED SO AS TO CONFORM TO A STRAIGHT LINE DRAWN BETWEEN SAID DESIGNATED POINTS. ELEVATIONS ARE IN FEET ABOVE U.S.C. & G.S. SEA LEVEL DATUM OF 1929.

WORK SHALL BE CONSTRUCTED ACCORDING TO STANDARD SPECIFICATIONS FOR PUBLIC WORKS CONSTRUCTION OF CALIFORNIA.

APPROVAL OF THE PLAN BY THE COUNTY OF LOS ANGELES DOES NOT CONSTITUTE A REPRESENTATION AS TO THE ACCURACY OF THE LOCATION OF OR THE EXISTENCE OR NON-EXISTENCE OF ANY UNDERGROUND UTILITY PIPE, OR STRUCTURE WITHIN THE LIMITS OF THIS PROJECT. THIS NOTE APPLIES TO ALL LOTS.

IF WORK IS TO BE DONE ON A STATE HIGHWAY, A PERMIT MUST BE OBTAINED FROM THE STATE OF CALIFORNIA, DIVISION OF HIGHWAYS, 120 SOUTH SPRING STREET, LOS ANGELES, CALIFORNIA.

COUNTY OF LOS ANGELES, CALIFORNIA

JOHN A. LAMBIE, COUNTY ENGINEER J. D. PARKHURST, CHIEF ENGINEER

CO. SEAL NO. 32

APPROVED BY: *Richard F. Madson* REGIONAL ENGINEER

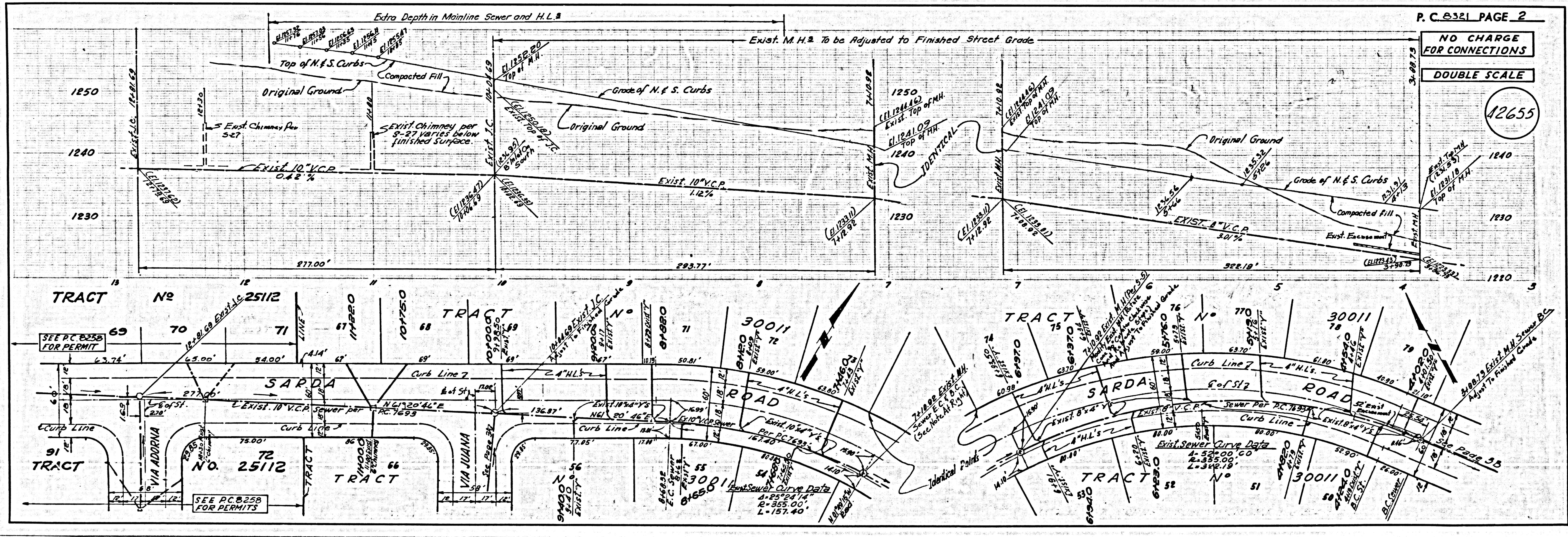
APPROVED BY: *J. D. Parkhurst* OFFICE ENGINEER

SUBMITTED BY: *Richard F. Madson* REGIONAL ENGINEER

CHECKED BY: *Richard F. Madson* REGIONAL ENGINEER

REG. C. E. NO. 16744

J.N. 0250.02



P.C. 8321 PAGE 2

NO CHARGE FOR CONNECTIONS

DOUBLE SCALE

12655

