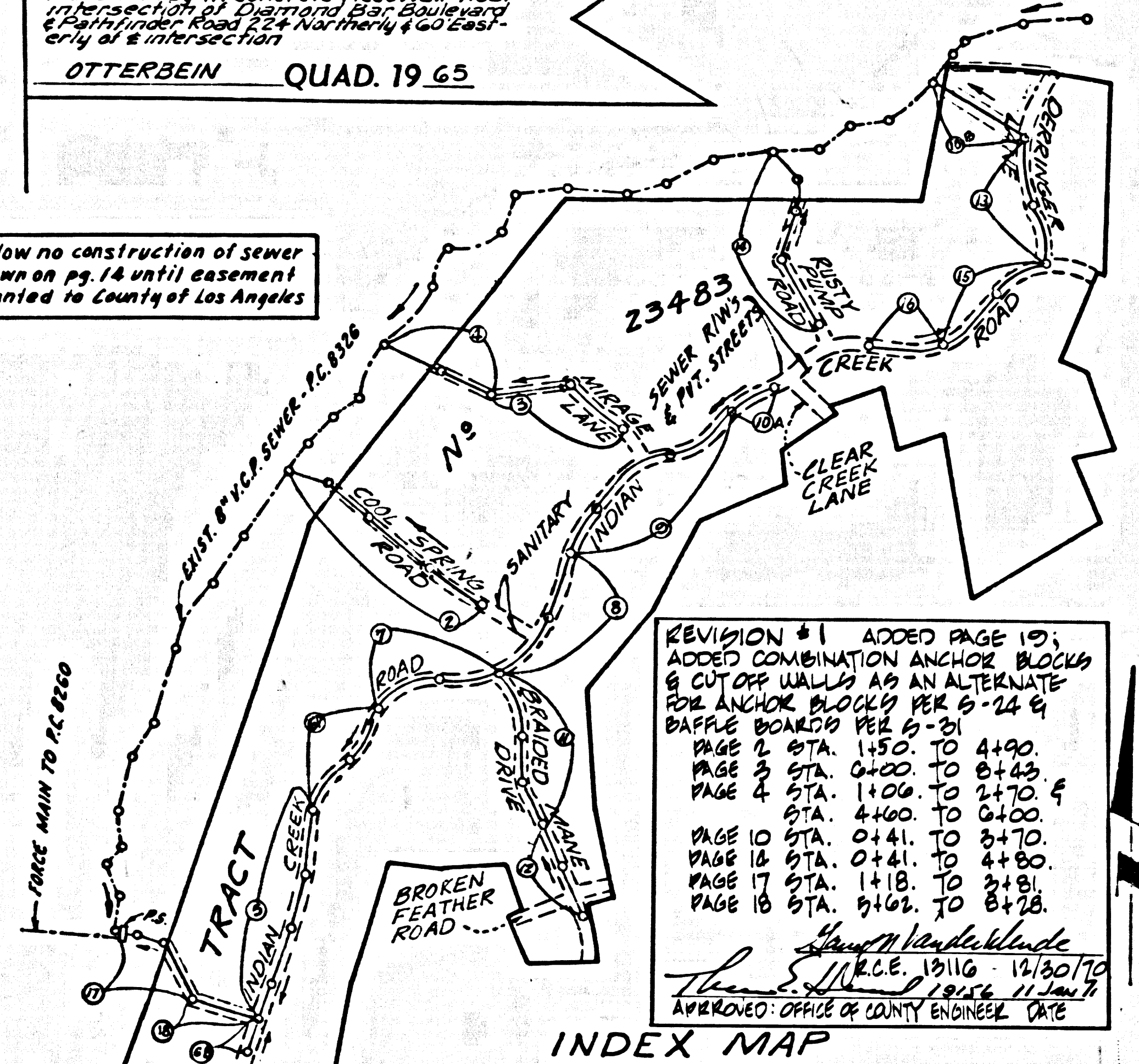


B.M. P.G. 2100 ELEV. 772.304
 R.D.B.M. Top in concrete sidewalk near
 intersection of Clear Creek Lane
 & Spring Road, Road 234 North of East
 20th St. & Clear Creek Lane
 OTTERBEIN QUAD. 19 65

Allow no construction of sewer
 shown on pg. 14 until easement
 granted to County of Los Angeles



INDEX MAP
 TRACT No. 23483
 SCALE 1"=600'
 P.C. 8328

SPECIAL NOTE "C"
 Refers to sites where soil cement backfills is
 given as an option. The Consulting Geologist and
 Soils Engineer shall inspect each site and
 submit his recommendations as to mix and placement
 of the soil cement. Recommendations shall be submitted to the Sanitation
 Division of the County Engineer for review and approval.

THE FOLLOWING LATEST REVISED STANDARD PLANS ON FILE
 IN THE OFFICE OF THE COUNTY ENGINEER SHALL APPLY IN
 THE CONSTRUCTION OF THIS PROJECT :

- Legend
- 5-1 Minimum Public Safety Requirements
 - 5-2 Non-Reinforced Precast Concrete Manhole
 - 5-35 Manhole Frame and Cover
 - 5-17 Standard Manhole Step
 - 5-21 Bedding for sewer pipe
 - 5-23 Cradling & Encasement
 - 5-26 Wye or Tee Support
 - 5-33 Allowable trench width
 - 5-24 Anchor Block
 - 5-31 Baffle board

ISSUE NO HOUSE CONNECTION PERMITS UNTIL
 P.C.'s 8260, 8326 AND 8326 B HAVE BEEN
 ACCEPTED BY THE COUNTY.

SPECIAL NOTES

- A. THE CONSULTING GEOLOGIST AND SOILS ENGINEER MUST
 INSPECT AND APPROVE THE EXCAVATIONS AND BACKFILL FOR
 THE SEWER ALIGNMENT SHOWN HEREON. SUBMIT REPORTS
 TO ENGINEERING REGULATORY SECTION OF THE COUNTY ENGINEER
 FOR REVIEW AND APPROVAL.
- B. SOME OF THE LOTS MAY REQUIRE INDIVIDUAL HOUSEHOLD
 SEWAGE ELECTRIC PUMPS AND/OR BACKWATER VALVES. EACH
 LOT SHOULD BE CHECKED PRIOR TO THE ISSUANCE OF
 HOUSE CONNECTION PERMITS.

PRIVATE ENGINEER'S
 NOTICE TO CONTRACTORS - CONT'D.

Contractors are cautioned to observe the following rule in using
 the grade stakes given by this office for putting in pipes. Three
 consecutive points that are shown to be on the same grade of slope
 must be used in common in order that any variation out of a perfect
 straight grade may be detected, and in case any such discrepancy
 is found, the same must be reported. Otherwise this office will
 not be responsible for any error in the grade of the finished work.

DOUBLE SCALE
 SAN DIMAS BLDG. DIST. NO. 10

- NOTES:
- PROVIDE STAKES ON THE PROPERTY LINE OR PROPERTY LINES PRODUCED AT RIGHT ANGLES TO THE SEWER LINE AT THE CENTER LINE OF EACH MANHOLE.
 - NO REPRESENTATIVE OF THE COUNTY ENGINEER WILL SURVEY OR LAY OUT ANY PORTION OF THE WORK.
 - THE PRIVATE ENGINEER SHALL FURNISH THE COUNTY ENGINEER WITH GRADE SHEETS AND STATIONING FOR ALL HOUSE LATERALS AND "T" OR "Y" BRANCHES AND SHALL PROVIDE STAKES FOR THEM AT THEIR PROPER LOCATIONS WITH STATIONING PLAINLY MARKED. ALL HOUSE LATERALS SHALL BE CONSTRUCTED IN A STRAIGHT ALIGNMENT AT RIGHT ANGLES FROM THE MAIN LINE SEWER EXCEPT AS SHOWN ON THE PLANS. HOUSE LATERALS FROM CHIMNEYS SHALL NOT HAVE AN ANGLE OF LESS THAN 45° WITH THE MAIN LINE SEWER. ANY CHANGE IN ALIGNMENT SHALL BE REQUESTED IN WRITING BY THE PRIVATE ENGINEER.
 - THE PRIVATE ENGINEER SHALL FURNISH THE HOUSE LATERAL DEPTH AT THE PROPERTY LINE BELOW THE TOP OF CURB ELEVATION FOR EACH HOUSE LATERAL ON THE GRADE SHEET.
 - NO REVISIONS SHALL BE MADE IN THESE PLANS WITHOUT THE APPROVAL OF THE COUNTY ENGINEER.
 - THE CONTRACTOR SHALL NOTIFY THE CONSTRUCTION DIVISION BY TELEPHONE, MADISON 9-07, EXT. 1831, AT LEAST TWENTY-FOUR HOURS BEFORE STARTING ANY WORK UNDER THIS CONTRACT.
 - ALL STRUCTURES SHALL BE PRECAST PER 5-36.
 - "Y" OR "T" BRANCHES MAY BE USED FOR CONNECTIONS TO MAINLINE SEWERS EXCEPT AS NOTED.
 - MANHOLE TOPS IN UNIMPROVED RIGHTS-OF-WAY TO BE SIX INCHES ABOVE FINISHED GRADE.
 - USE EXTRA STRENGTH PIPE. ALL PIPE IS STANDARD DEPTH EXCEPT AS NOTED.
 - INTERIOR CLAY PIPE JOINTS SHALL BE TYPE "D" "T" OR "C" PER STD. SPECS., SECTION 208-2.
 - IF A POWER POLE IS WITHIN THREE FEET OF THE SEWER, THE SEWER SHALL BE ENCASED, PER 5-23, TWO FEET ON EACH SIDE FROM THE POINT OF INTERFERENCE.
 - IF DURING THE COURSE OF CONSTRUCTION IT IS DETERMINED THAT THERE IS LESS THAN FOUR FEET OF COVER OVER THE TOP OF A MAIN LINE OR HOUSE LATERAL "Y" OR "T" SEWER WHICH IS NOT INDICATED ON THE PLANS, THE PIPE SHALL BE ENCASED PER 5-23, CASE B UNLESS OTHERWISE APPROVED BY THE COUNTY ENGINEER.
 - HOUSE LATERALS TO BE CONSTRUCTED WITH INVERTS AT PROPERTY LINE & FEET BELOW CURB GRADE EXCEPT AS NOTED.
 - RESURFACE ALL TRENCHES WITHIN PAVED AREAS TO MEET L.A. COUNTY ROAD DEPT. OR CALIFORNIA STATE HIGHWAY REQUIREMENTS IN ACCORDANCE WITH PERMITS.
 - SEWERS TO BE TESTED FOR LEAKAGE PER SECTION 208-2.3.3 OF THE STD. SPECIFICATIONS.
 - REFER TO SECTION 7-10.81 OF THE STD. SPECIFICATIONS REGARDING SLOTTED SANDER.
 - ALL JOINTS BETWEEN CAST IRON PIPE AND INTERIOR CLAY PIPE SHALL BE MADE WITH A RUBBER SLEEVE JOINT. TYPE "D" OR "T" (WITH SLEEVE IF NECESSARY) PER STD. SPECS., SECTION 208-2.
 - SPECIAL BACKFILL IN DESIGNATED AREAS:
 (A) BACKFILL TRENCH & REPLACE OTHER EARTH EXPOSED SO AS TO ACHIEVE THE NATURAL OR FINISHED GRADES AND SLOPES SHOWN ON THE GRADING PLAN APPROVED FOR THIS TRACT BY THE BUILDING AND SAFETY DIVISION.
 (B) ALL BACKFILL AND EARTH REPLACED SHALL BE COMPACTED TO A MINIMUM OF 90% OF MAXIMUM DENSITY PER A.S.T.M. STANDARD METHOD OF TEST D-1557 AT ALL DEPTHS OF MAXIMUM DENSITY PER A.S.T.M. STANDARD METHOD OF TEST D-1557. AN ACCEPTABLE CERTIFICATION OF SUCH COMPACTION SHALL BE SUBMITTED TO THE CONSTRUCTION DIVISION.

COLLECT CHARGES
 AS INDICATED

NOTICE TO CONTRACTOR
 The assistance and location of any underground utility pipes or structures shown on these plans are obtained by a search of the available records to the best of my knowledge there are no existing utilities except as shown on these plans. The contractor is required to take due precautionary measures to protect the utility lines shown and any other lines not shown on the plans.

Sergel Duke
 8/12/60

PROFILE ALIGNMENT AND GRADE OF
 SANITARY SEWERS PAGE 1
 CONSTRUCTED IN

TRACT No. 23483

PRIVATE CONTRACT NO. 8328

W.S. 39-C4
 10 SHEETS, 10 PAGES

SCALE: VERT. 1"=8'
 HORIZ. 1"=40'

PREPARED IN THE OFFICES OF
 E.L. PEARSON AND ASSOCIATES

Sergel Duke
 REG. C. E. NO. 13560

42610

FOR LEGEND SEE PLAN NO. 5-1

NOTE:
 GRADES TO WHICH THIS IMPROVEMENT IS TO BE CONSTRUCTED ARE SHOWN ON PLANS AND PROFILES. GR. 1 POINTS FOR TOP OF CURB, CENTER LINE OF STREETS, OR CENTER LINE OF ALLEYS ARE SHOWN ON PROFILES. AT ALL POINTS BETWEEN DESIGNATED POINTS THE GRADE SHALL BE ESTABLISHED SO AS TO CONFORM TO A STRAIGHT LINE DRAWN BETWEEN SAID DESIGNATED POINTS. ELEVATIONS ARE IN FEET ABOVE U.S.C. & G.S. SEA LEVEL DATUM OF 1929. WORKING SHALL BE CONDUCTED ACCORDING TO THE STANDARD SPECIFICATIONS FOR PUBLIC WORKS CONSTRUCTION FOR CALIFORNIA AND COUNTY ENGINEER SPECIAL PROVISIONS FOR THE CONSTRUCTION OF SANITARY SEWERS DATED MARCH 7, 1959 AND SHALL BE LOCATED IN COUNTY STREETS FROM L.A. COUNTY ROAD DIST. DISTRICT OFFICE NO. 10 AND PAY A FEE TO THE COUNTY ENGINEER, ROOM 300, COUNTY ENGINEER'S OFFICE, 125 SOUTH SPRING STREET, LOS ANGELES, CALIFORNIA. REGIONAL OFFICE, SUFFICIENT TO COVER THE COST OF CONSTRUCTION INSPECTION AND RECORD PLANS.

APPROVAL OF THIS PLAN BY THE COUNTY OF LOS ANGELES DOES NOT CONSTITUTE A REPRESENTATION AS TO THE ACCURACY OF THE LOCATION OF OR THE EXISTENCE OR NON-EXISTENCE OF ANY UNDERGROUND UTILITY PIPE OR STRUCTURE WITHIN THE LIMITS OF THE PROJECT. THIS NOTE APPLIES TO ALL PAGES.
 IF WORK IS TO BE DONE IN A STATE HIGHWAY, A PERMIT MUST BE OBTAINED FROM THE STATE OF CALIFORNIA, DIVISION OF HIGHWAYS, 125 SOUTH SPRING STREET, LOS ANGELES, CALIFORNIA.

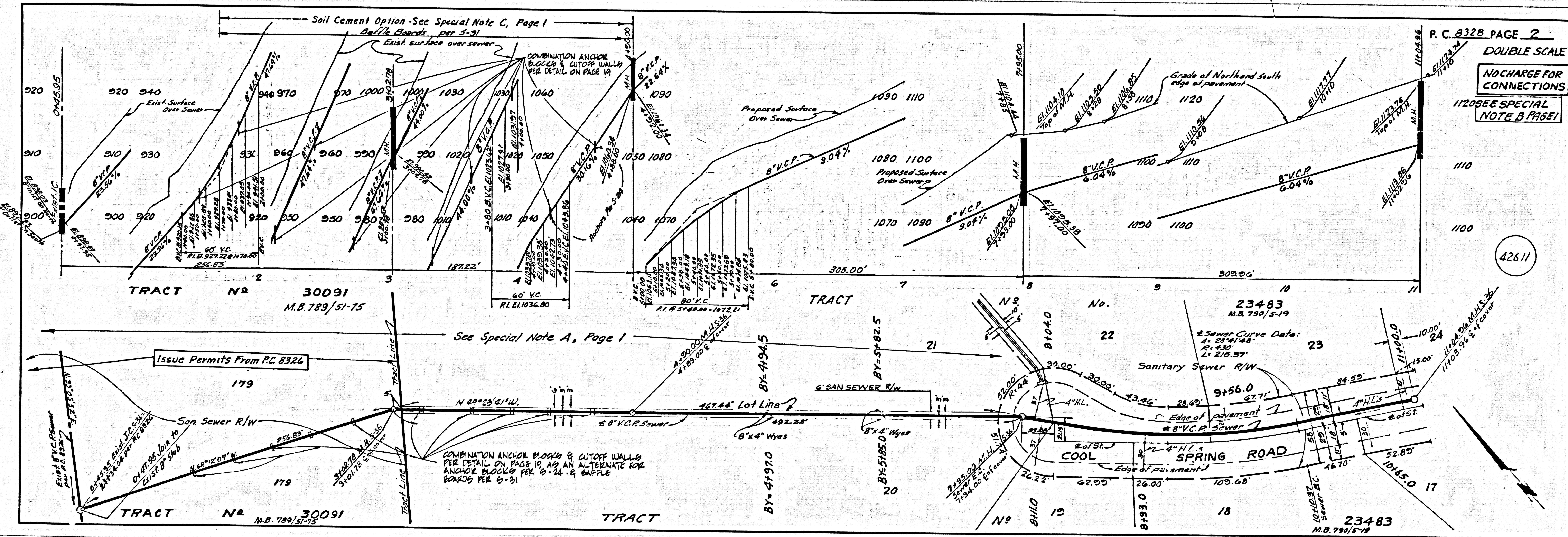
COUNTY OF LOS ANGELES, CALIFORNIA
 JOHN A. LAMBIE, COUNTY ENGINEER
 APPROVED BY *Sergel Duke*
 SAN DIMAS REGIONAL ENGINEER

J. D. PARKHURST, CHIEF ENGINEER
 CO. SAN. DIST. NO. 10
 APPROVED BY *J. D. Parkhurst*
 OFFICE ENGINEER

CHECKED BY *Ralph Schuch*
 REG. C.E. NO. 13906 8/12/60
 DATE

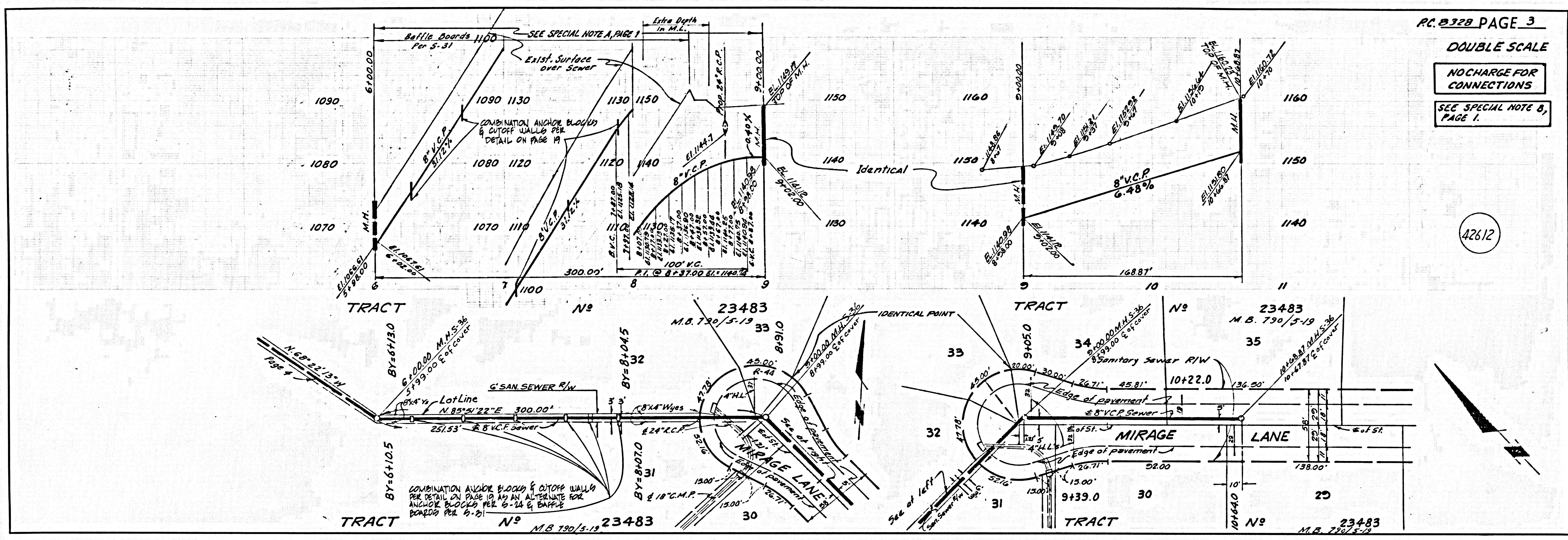
Sanitation Districts shall be notified prior to the following so that required inspection can be made (Phone 331-1265 - 9:00 AM - 5:00 PM) Acceptance of the project.

On connections for the disposal of industrial wastes shall be made to sewers shown on these drawings without written permission from the Chief Engineer and General Manager of the County Sanitation Districts.



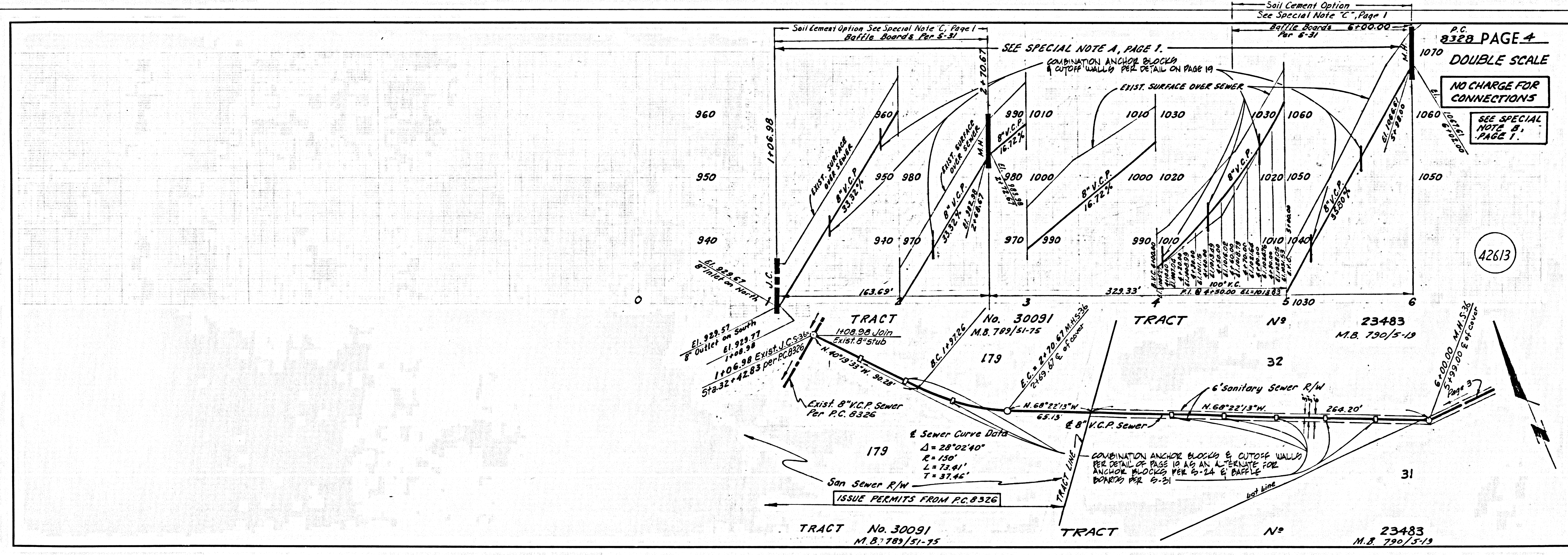
P.C. 8328 PAGE 2
 DOUBLE SCALE
 NO CHARGE FOR CONNECTIONS
 1120 SEE SPECIAL NOTE B PAGE 1

42611



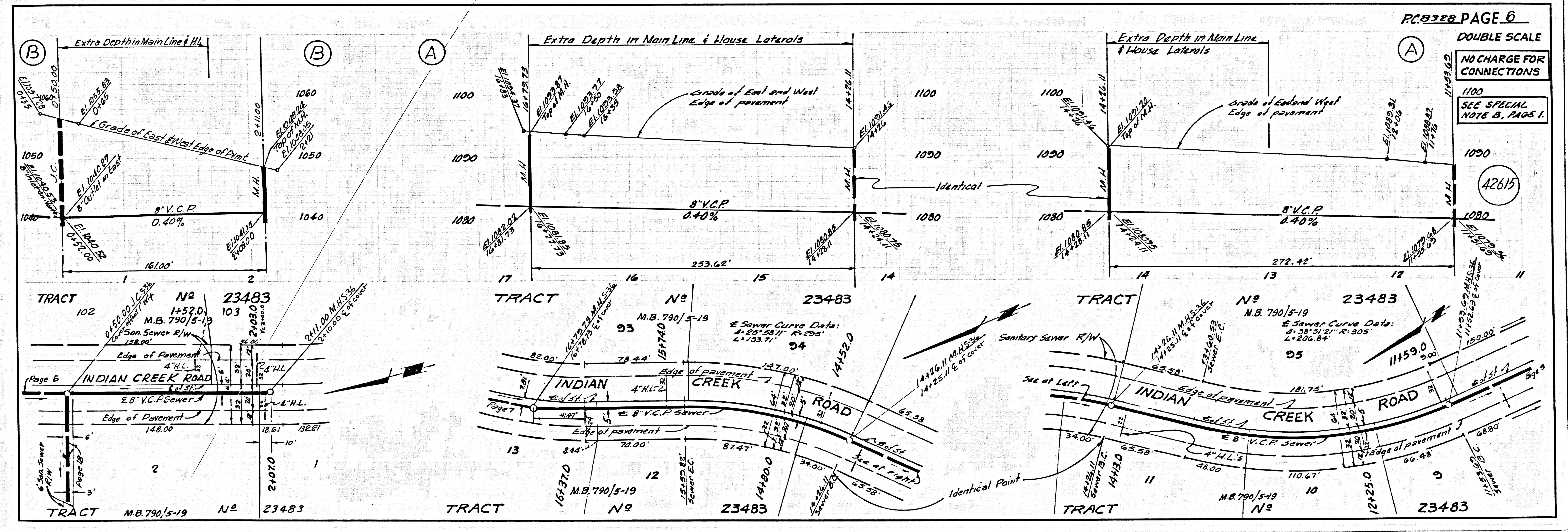
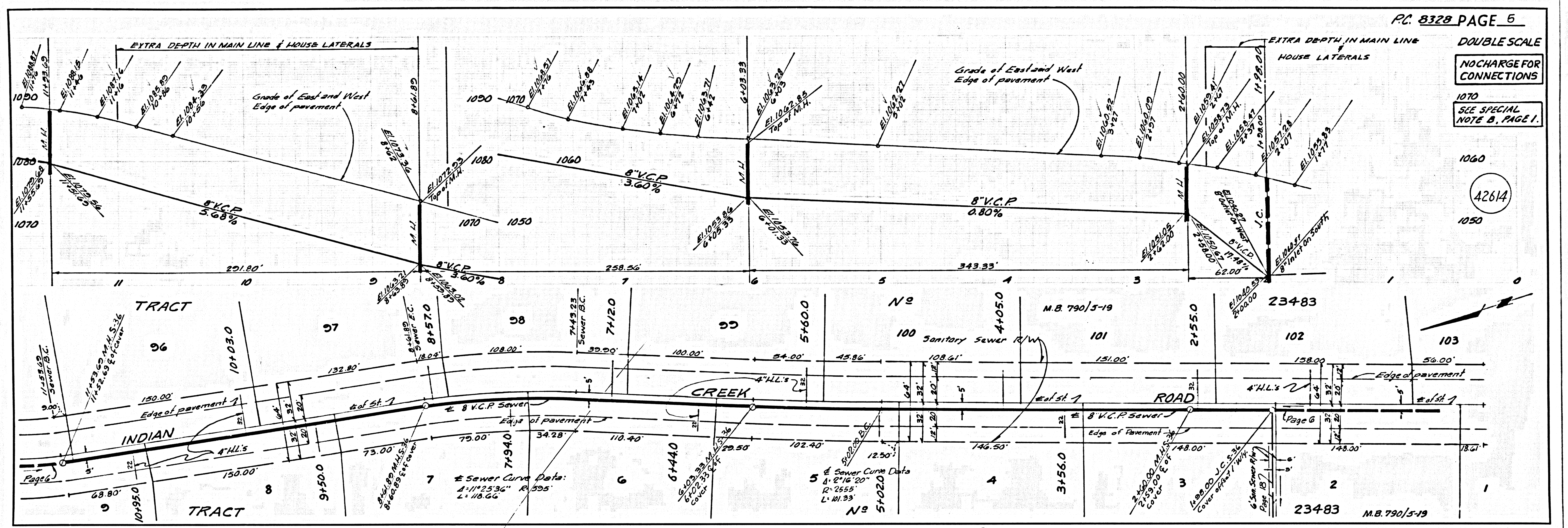
P.C. 8328 PAGE 3
 DOUBLE SCALE
 NO CHARGE FOR CONNECTIONS
 SEE SPECIAL NOTE B, PAGE 1.

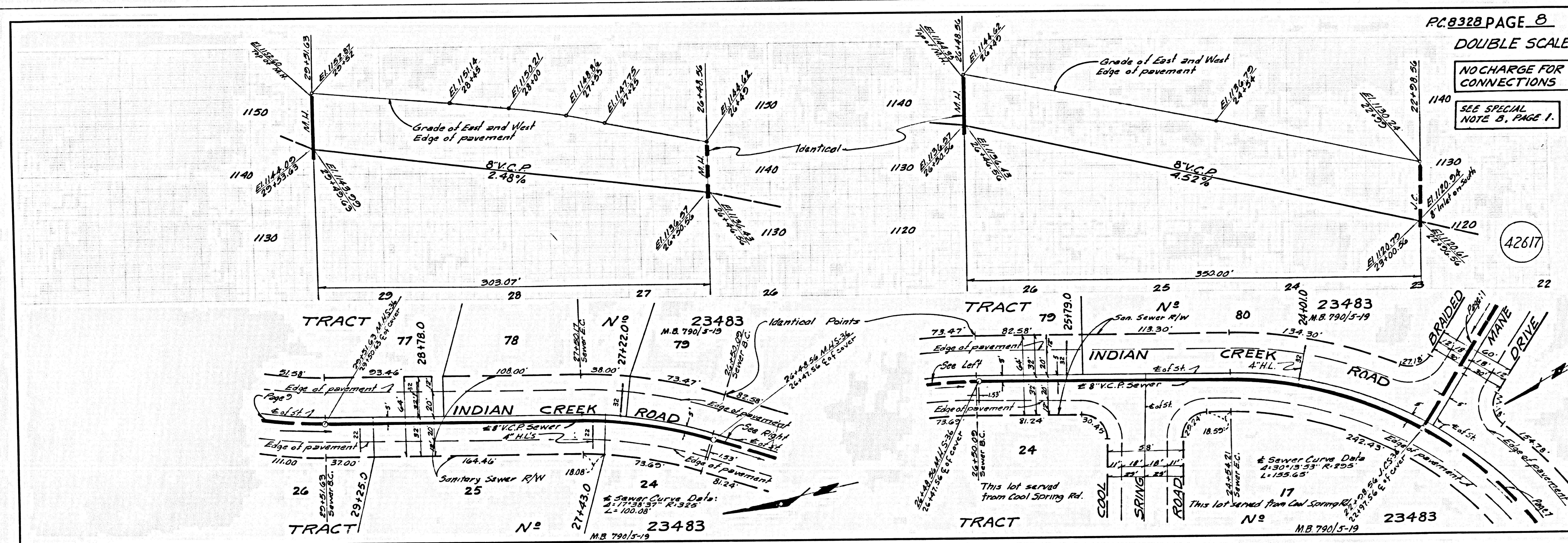
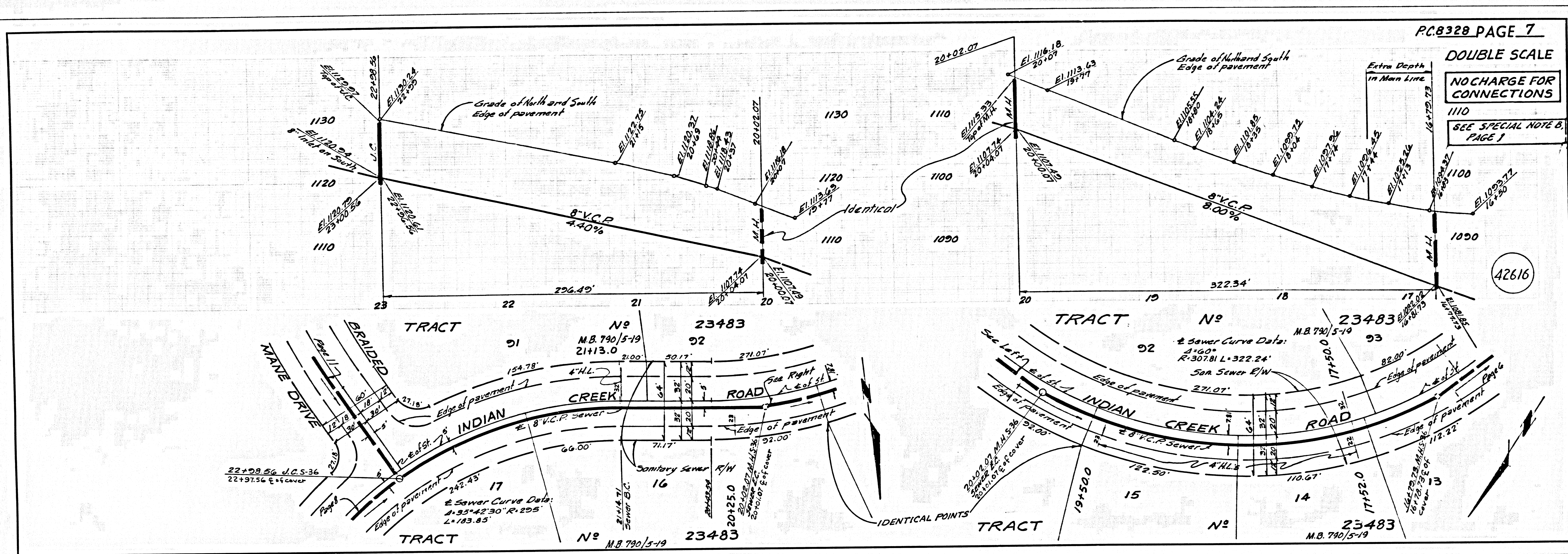
42612

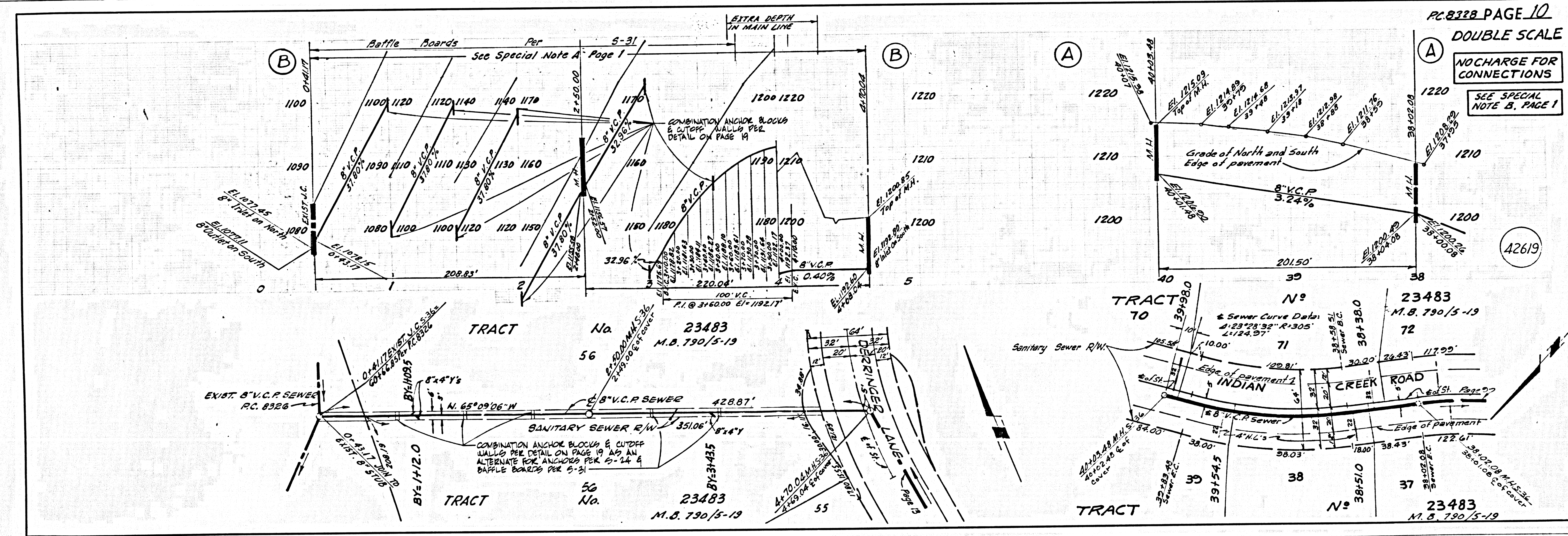
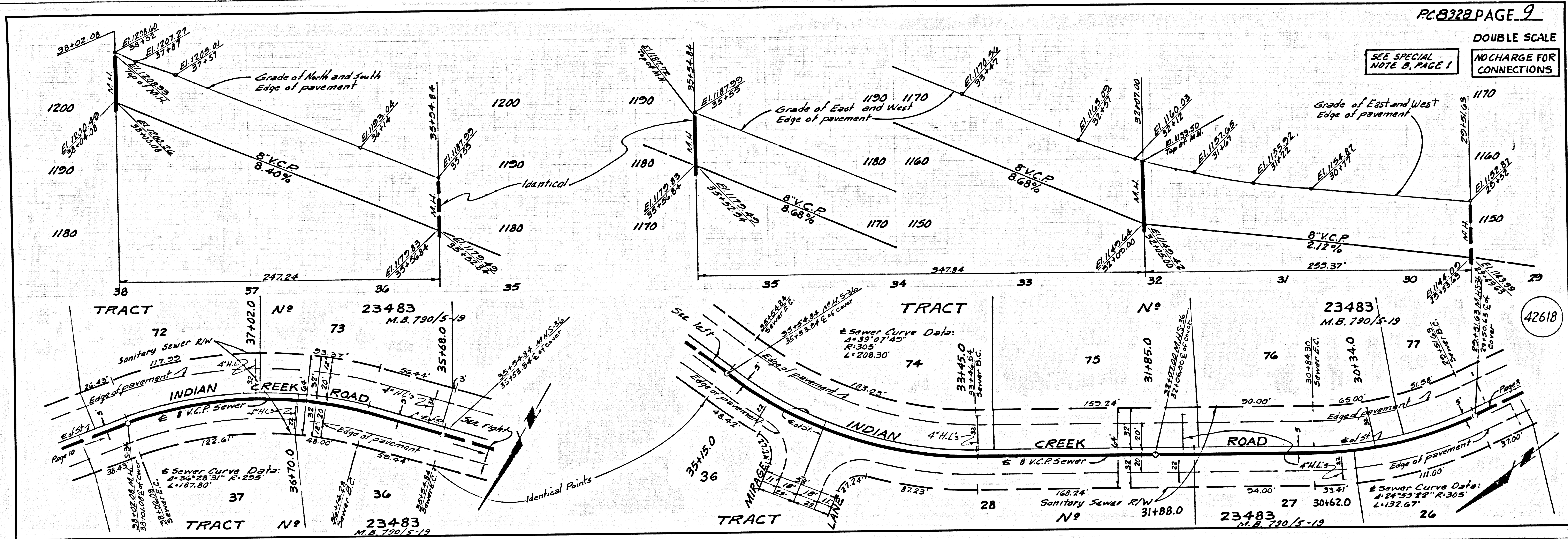


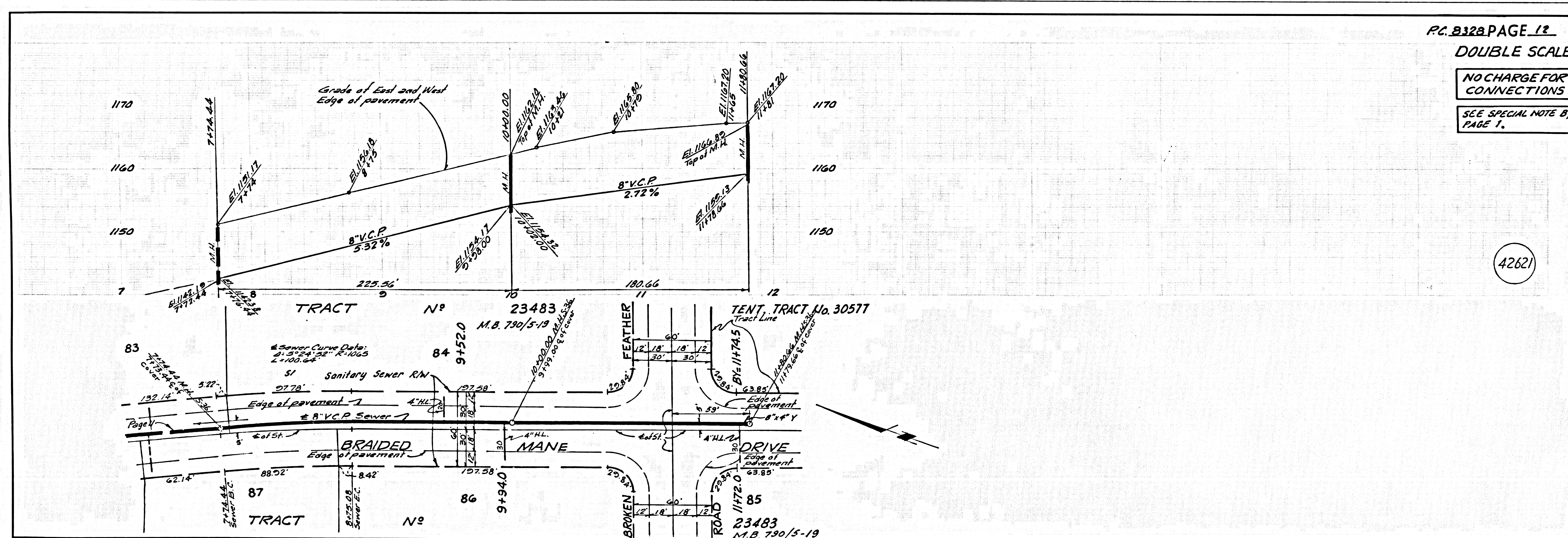
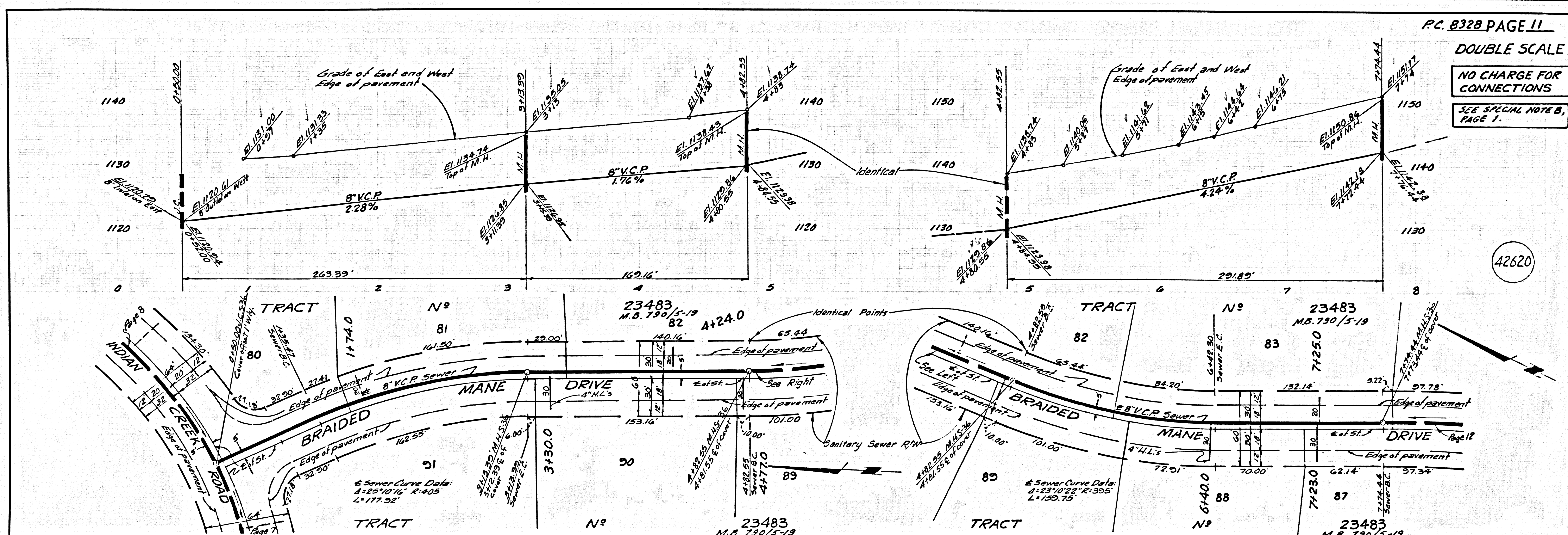
P.C. 8328 PAGE 4
 DOUBLE SCALE
 NO CHARGE FOR CONNECTIONS
 SEE SPECIAL NOTE B, PAGE 1.

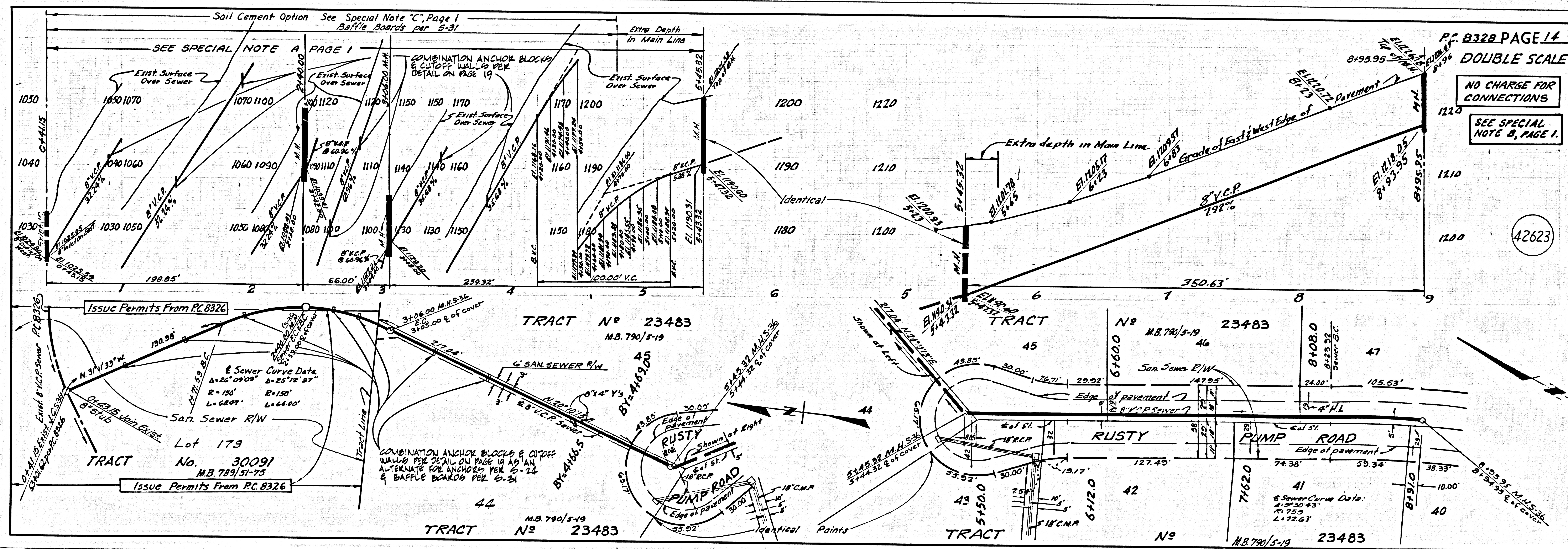
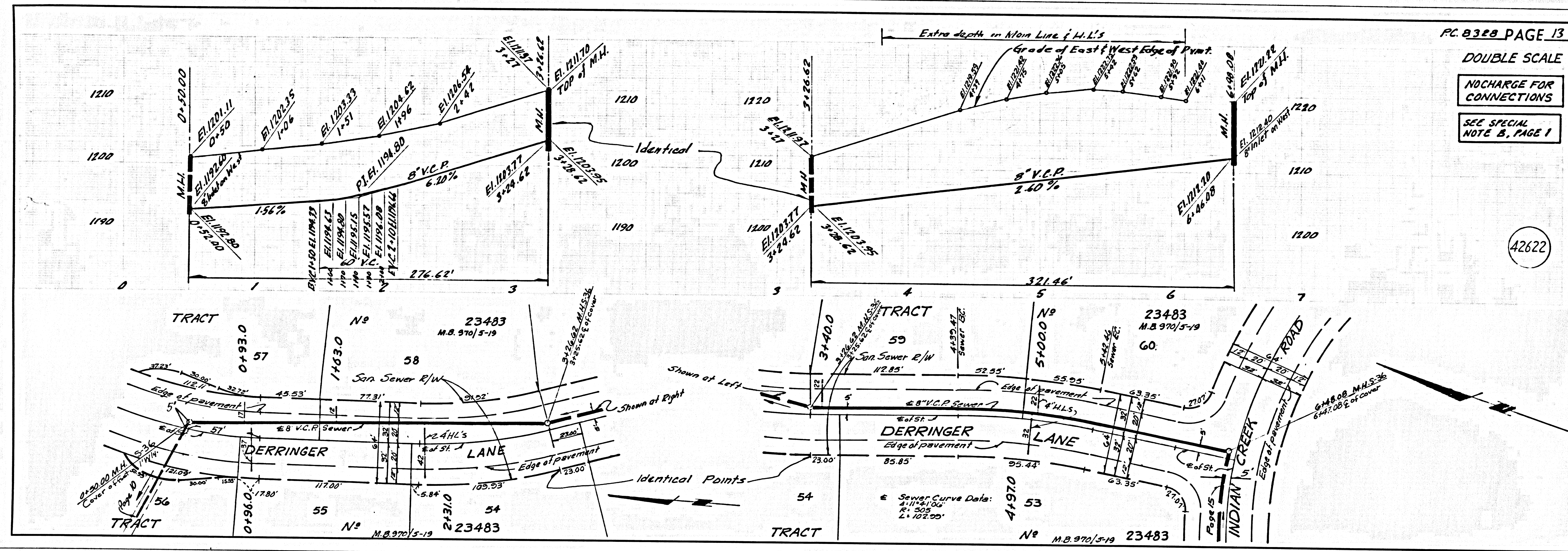
42613

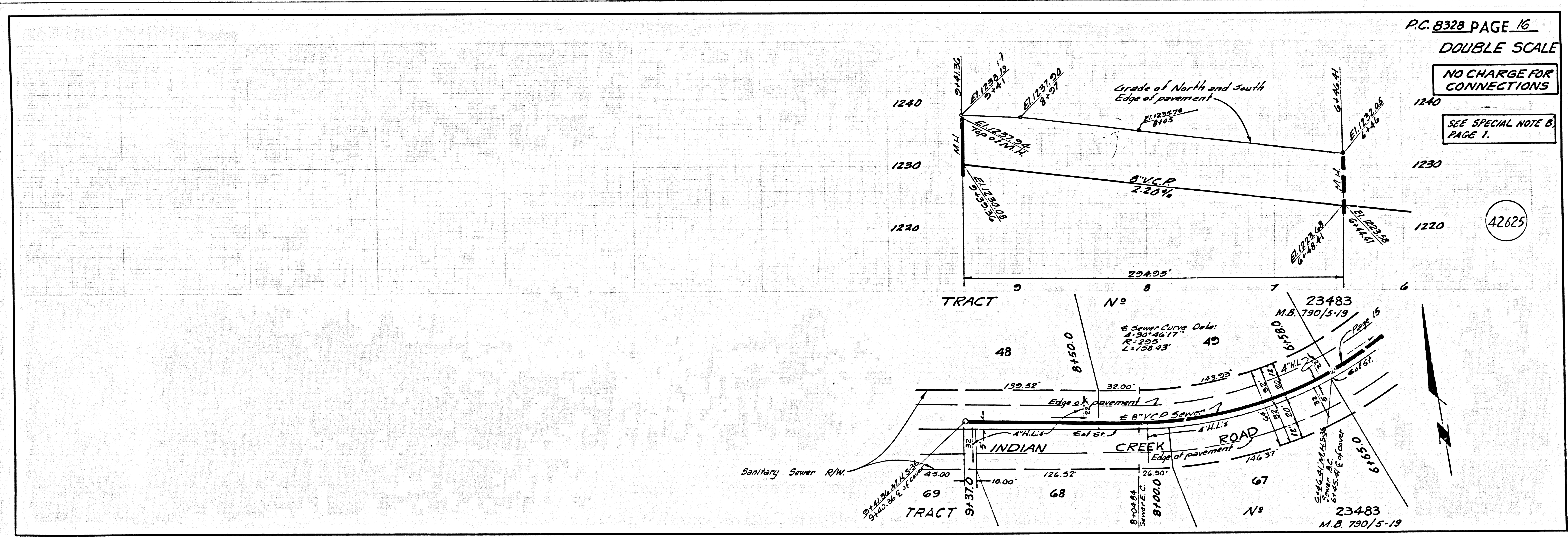
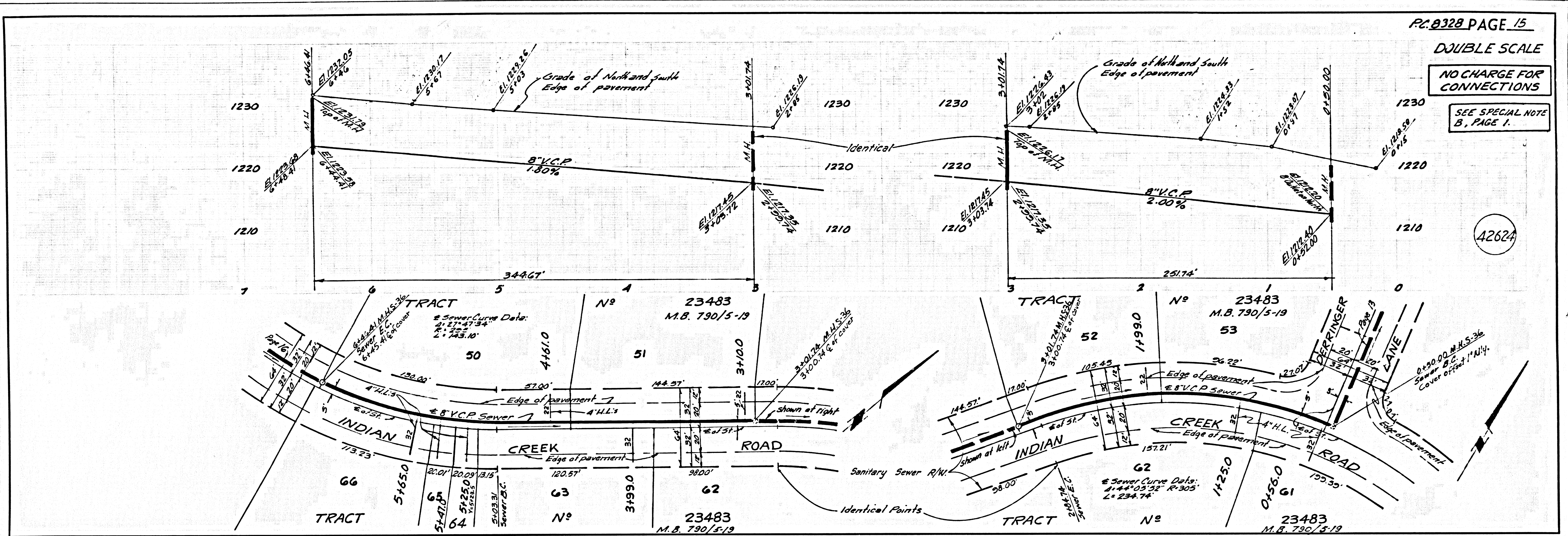


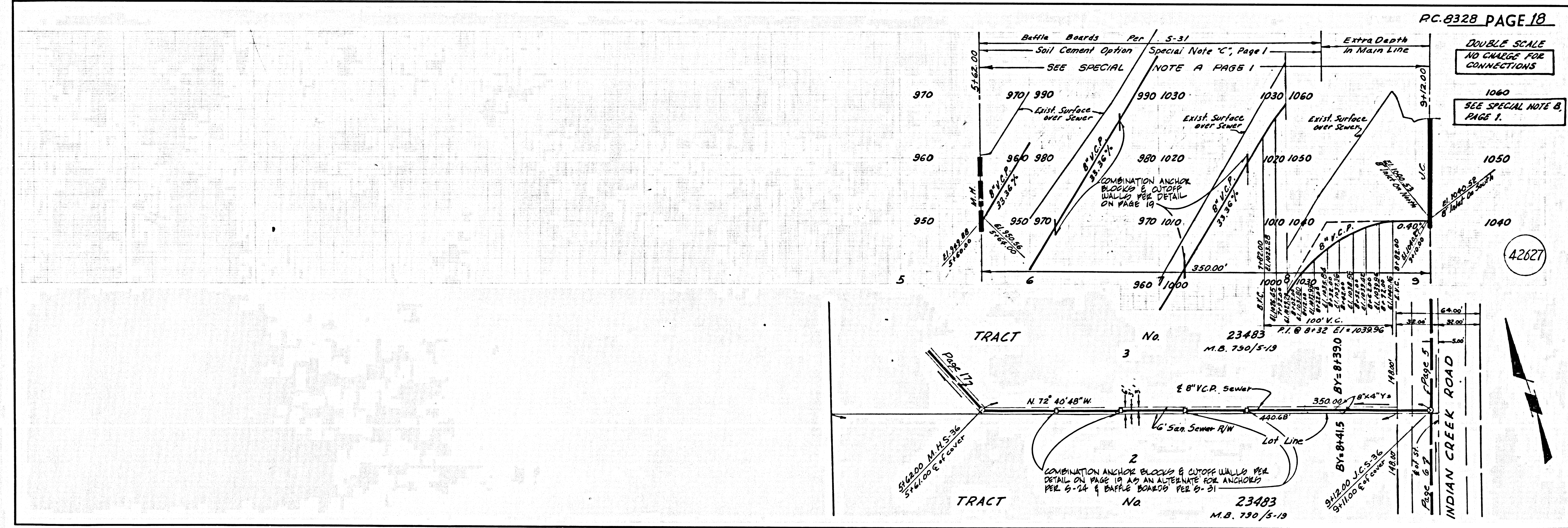
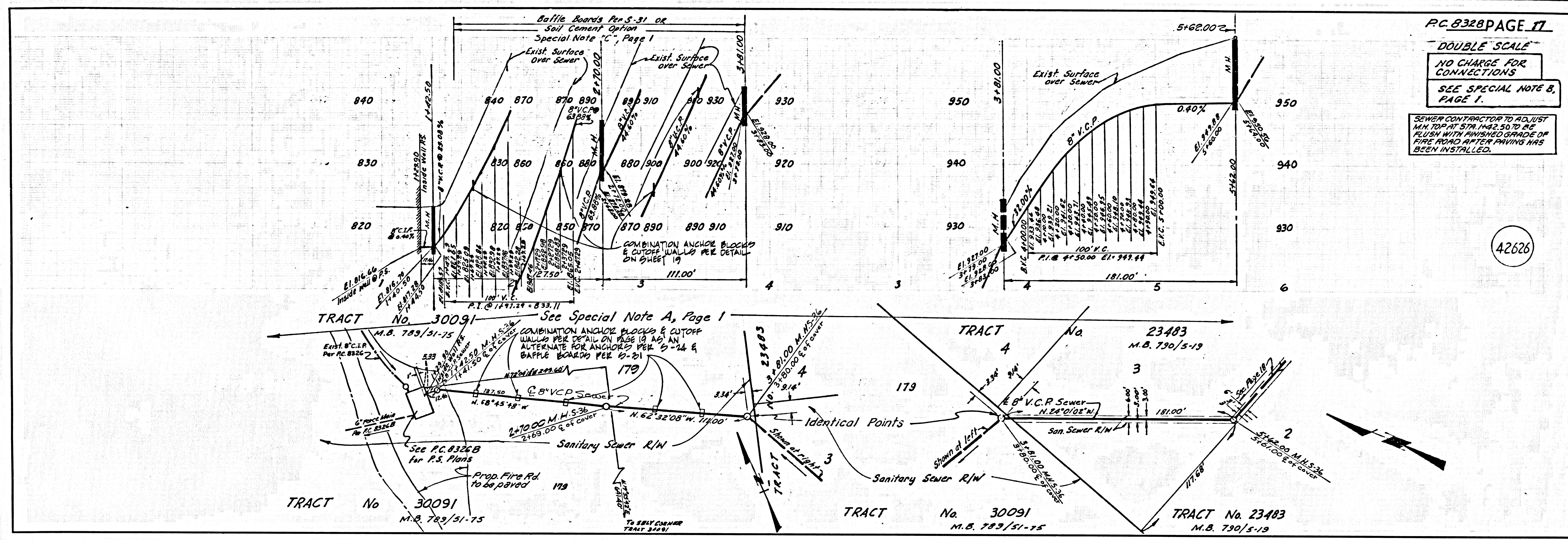






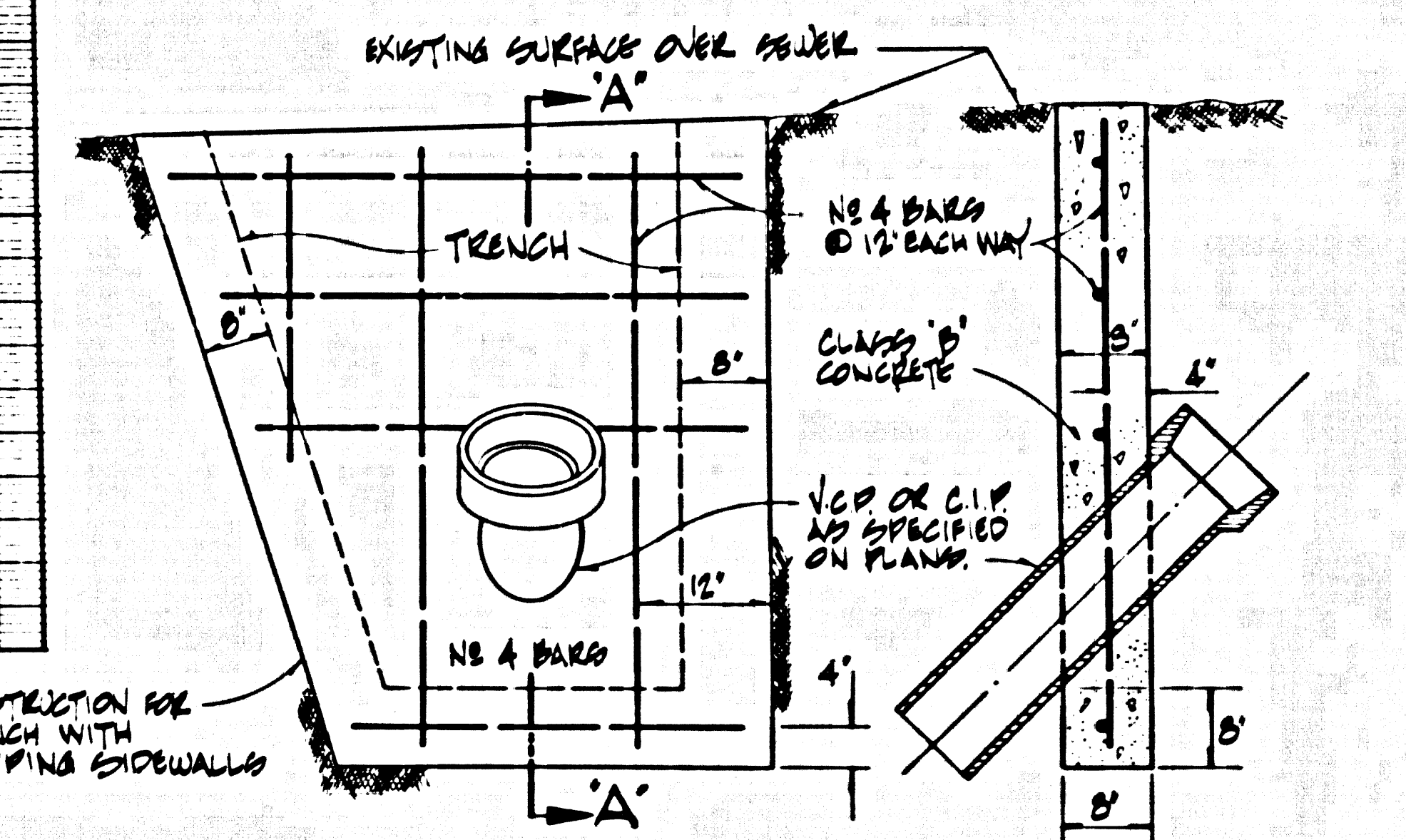
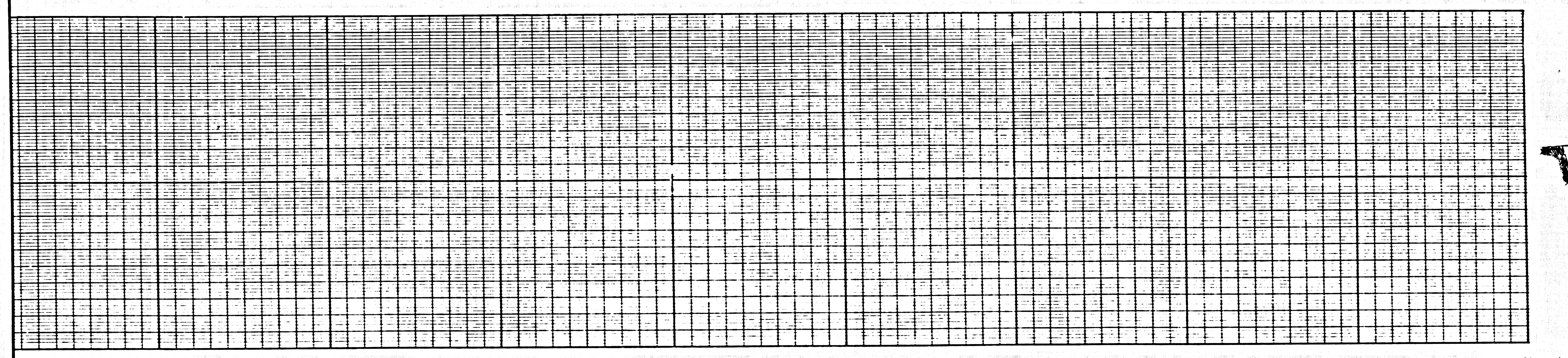






COMBINED ANCHOR BLOCK AND CUT OFF WALL

TO BE USED WHEN SEWER GRADE IS GREATER THAN 30% OR WHEN DESIGNATED ON THE PLAN



ELEVATION SECTION A-A

- NOTES:
1. TO BE USED AS AN ALTERNATE FOR ANCHOR BLOCKS PER S-14 AND BAFFLE BOARDS PER S-21
 2. ANY METHOD OF FORMING MAY BE USED PROVIDED THE MINIMUM DIMENSIONS ARE MET.
 3. ALL DIMENSIONS SHOWN ARE MINIMUM.
 4. TOP OF CUTOFF WALL CAN BE 6" MAXIMUM BELOW FINISH SURFACE OVER SEWER.

42628

