

THE FOLLOWING COUNTY ENGINEER STANDARD PLANS APPLY TO THIS PROJECT

Legend	5-1
Minimum Excavation Safety Requirements	5-2
Brick Manhole	5-3
Non-Reinforced Precast Concrete Manhole	5-36
Manhole Frame and Cover	5-35
Manhole Stop	5-17
Bedding for sewer pipe	5-21
Cradling and encasement	5-23
Wye or Tee Support	5-26
Allowable trench width	5-33

REVISION #1. Relocated Sewer on Grand Avenue from pg. 9, Sta. 15+65.54 to Shotgun Lane, removed Sewer in Diamond Bar Blvd. from Mountain Laurel Way, pg. 9 to Sta. 15+65.54 on Grand Ave.
By: *[Signature]* 3-15-70
R.C.E. 17560 DATE

Approved: *[Signature]*
OFFICE OF COUNTY ENGINEER

No connection for the disposal of industrial wastes shall be made to sewers shown on these drawings without written permission from the Chief Engineer and General Manager of the County Sanitation Districts.

ROUGH GRADING TO BE COMPLETED PRIOR TO THE CONSTRUCTION OF SEWERS

ISSUE NO HOUSE CONNECTION PERMITS UNTIL P.C. 8625 HAS BEEN ACCEPTED BY THE LOS ANGELES COUNTY

**DOUBLE SCALE
SAN DIMAS BLDG. DIST. NO. 10**

- NOTES:**
- PROVIDE STAKES ON THE PROPERTY LINE OR PROPERTY LINES PRODUCED AT RIGHT ANGLES TO THE SEWER LINE AT THE CENTER LINE OF EACH MANHOLE.
 - NO REPRESENTATIVE OF THE COUNTY ENGINEER WILL SURVEY OR LAY OUT ANY PORTION OF THE WORK.
 - THE PRIVATE ENGINEER SHALL FURNISH THE COUNTY ENGINEER WITH GRADE SHEETS AND STATIONING FOR ALL HOUSE LATERALS. T-AND T-BRANCHES AND SHALL PROVIDE STAKES FOR THEM AT THEIR PROPER LOCATIONS WITH STATIONING PLAINLY MARKED. ALL HOUSE LATERALS SHALL BE CONSTRUCTED IN A STRAIGHT ALIGNMENT AT RIGHT ANGLES TO THE MAIN LINE SEWER EXCEPT AS SHOWN ON THE PLANS. HOUSE LATERALS FROM CHIMNEYS SHALL NOT HAVE AN ANGLE OF LESS THAN 45° WITH THE MAIN LINE SEWER. ANY CHANGE IN ALIGNMENT SHALL BE REQUESTED IN WRITING BY THE PRIVATE ENGINEER.
 - THE PRIVATE ENGINEER SHALL FURNISH THE HOUSE LATERAL DEPTH AT THE PROPERTY LINE BELOW THE TOP OF CURB ELEVATION OR EDGE OF PAVEMENT FOR EACH HOUSE LATERAL ON THE GRADE SHEET.
 - NO REVISIONS SHALL BE MADE IN THESE PLANS WITHOUT THE APPROVAL OF THE COUNTY ENGINEER.
 - THE CONTRACTOR SHALL NOTIFY THE CONSTRUCTION DIVISION BY TELEPHONE, MADISON 9-472, EXT. 8151, AT LEAST TWENTY-FOUR HOURS BEFORE STARTING ANY WORK UNDER THIS CONTRACT.
 - MANHOLES SHALL BE EITHER BRICK MANHOLES PER 5-3 OR PRECAST CONC. MANHOLES PER 5-36 EXCEPT AS NOTED.
 - "T" JUNCTIONS MAY BE USED FOR CONNECTIONS TO EXISTING SEWERS EXCEPT AS NOTED.
 - MANHOLE TOPS IN UNIMPROVED AREAS OF WAYS TO BE SIX INCHES ABOVE FINISHED GRADE UNLESS OTHERWISE SPECIFIED. CONNECTIONS TO EXISTING SEWERS SHALL BE MADE BY A T-JUNCTION AND SHALL BE MADE TO THE MAIN LINE SEWER AT THE POINT OF INTERFERENCE.
 - ALL HOUSE LATERALS SHALL BE 18" V.C.P. PER STANDARD SPECIFICATIONS SECTION 808.2.
 - IF A POWER POLE IS WITHIN THREE FEET OF THE SEWER, THE SEWER SHALL BE ENCASED PER 5-23, OR TWO FEET ON EACH SIDE FROM THE POINT OF INTERFERENCE.
 - IF DURING THE COURSE OF CONSTRUCTION IT IS DETERMINED THAT THERE IS LESS THAN FOUR FEET OF COVER OVER THE TOP OF A MAIN LINE OR HOUSE LATERAL V.C.P. SEWER WHICH IS NOT INDICATED ON THE PLANS, THE PIPE SHALL BE ENCASED PER 5-23, UNLESS OTHERWISE APPROVED BY THE COUNTY ENGINEER.
 - HOUSE LATERALS TO BE CONSTRUCTED WITH INVERTS AT PROPERTY LINE & FEET BELOW A GRADE EXCEPT AS NOTED.
 - RESURFACE ALL TRENCHES WITHIN PAVED AREAS TO MEET L.A. COUNTY ROAD DEPT. OR CALIFORNIA STATE HIGHWAY REQUIREMENTS IN ACCORDANCE WITH PERMITS.
 - SEWERS TO BE TESTED PER LEAKAGE PER SECTION 806.2.3.7 OF THE STANDARD SPECIFICATIONS.
 - ALL JOINTS BETWEEN CAST IRON PIPE SHALL BE RUBBER FLANGE JOINT TYPE "C" WITH BUSHING IF NECESSARY PER STANDARD SPECIFICATIONS, SECTION 808.2.

County Sanitation Districts shall be notified prior to the following so that required inspection can be made (Phone 207-1023 or 666-8999)

NOTICE TO CONTRACTOR
The existence and location of any underground utility pipes or structures shown on these plans to the best of our knowledge there are no existing utilities except as shown on these plans. The contractor is required to take due precautionary measures to protect the utility lines shown and any other lines, not of record or not shown on these plans.
[Signature] 1/30/70

PROFILE ALIGNMENT AND GRADE OF
**P.C. 8331
SANITARY SEWERS PAGE 1**
CONSTRUCTED IN

**TRACT NO 24046
PRIVATE CONTRACT NO. 8331**

W.S. 39-B4
7 SHEETS, 14 PAGES
SCALE: VERT. 1" = 8'
HORIZ. 1" = 40'
DECEMBER, 1969
PREPARED IN THE OFFICES OF

E.L. PEARSON AND ASSOCIATES
[Signature]
REG. C.E. NO. 2366

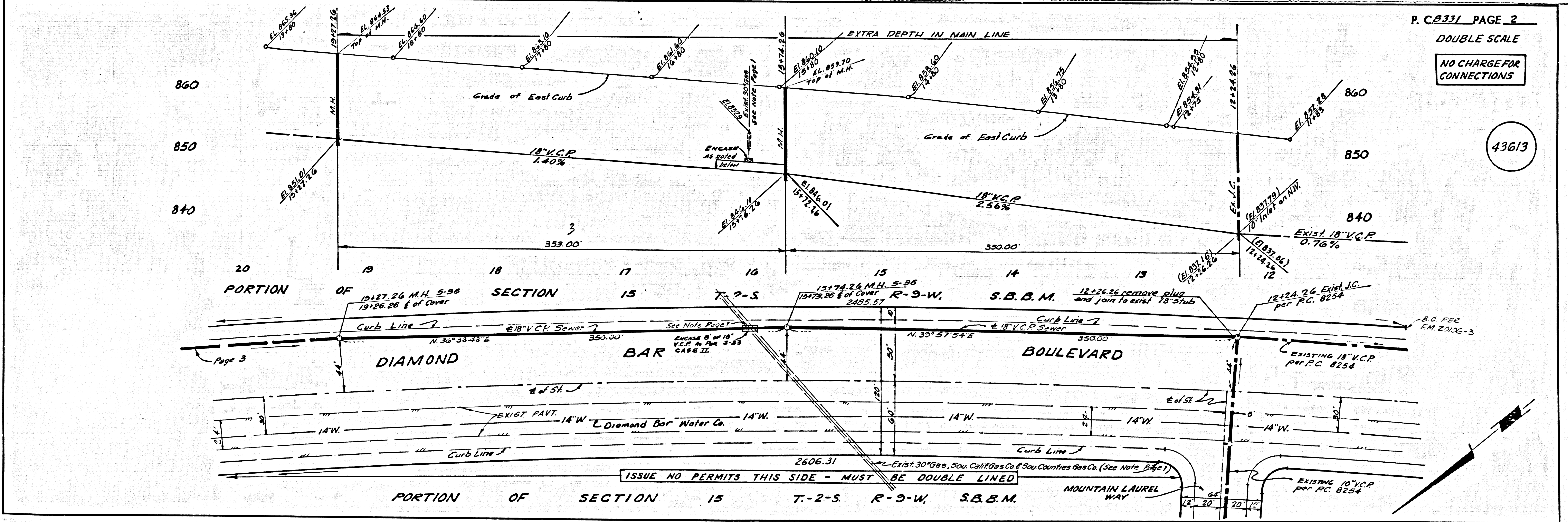
43612

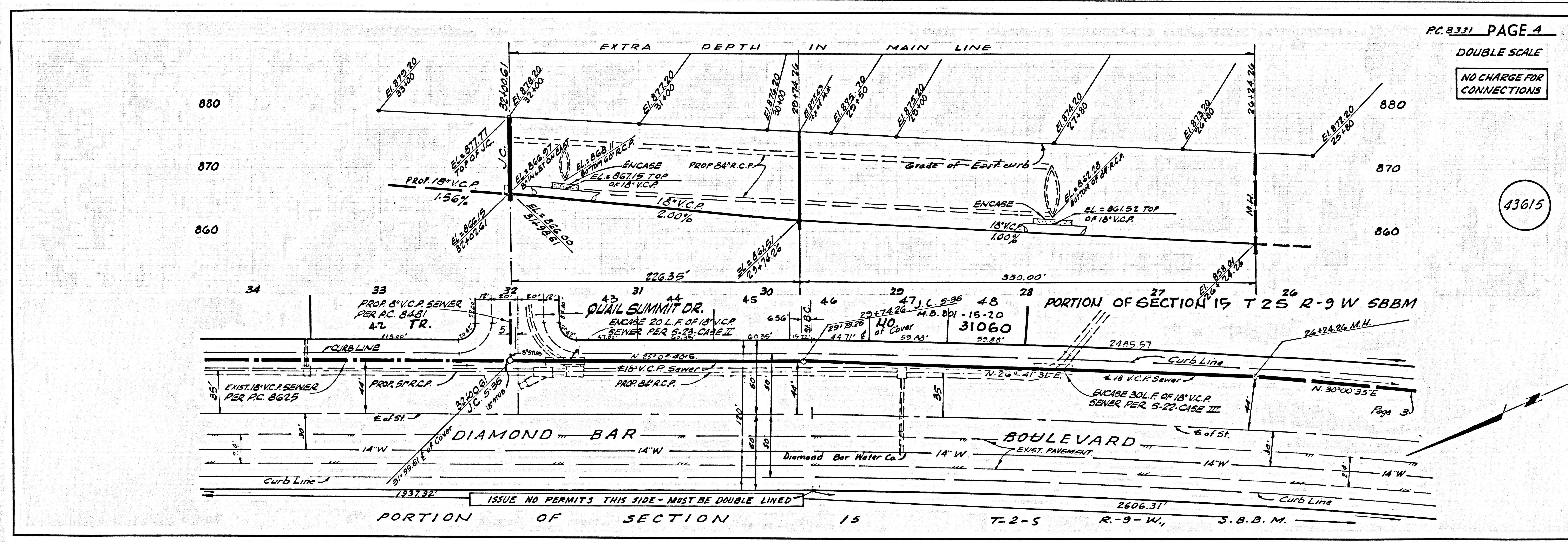
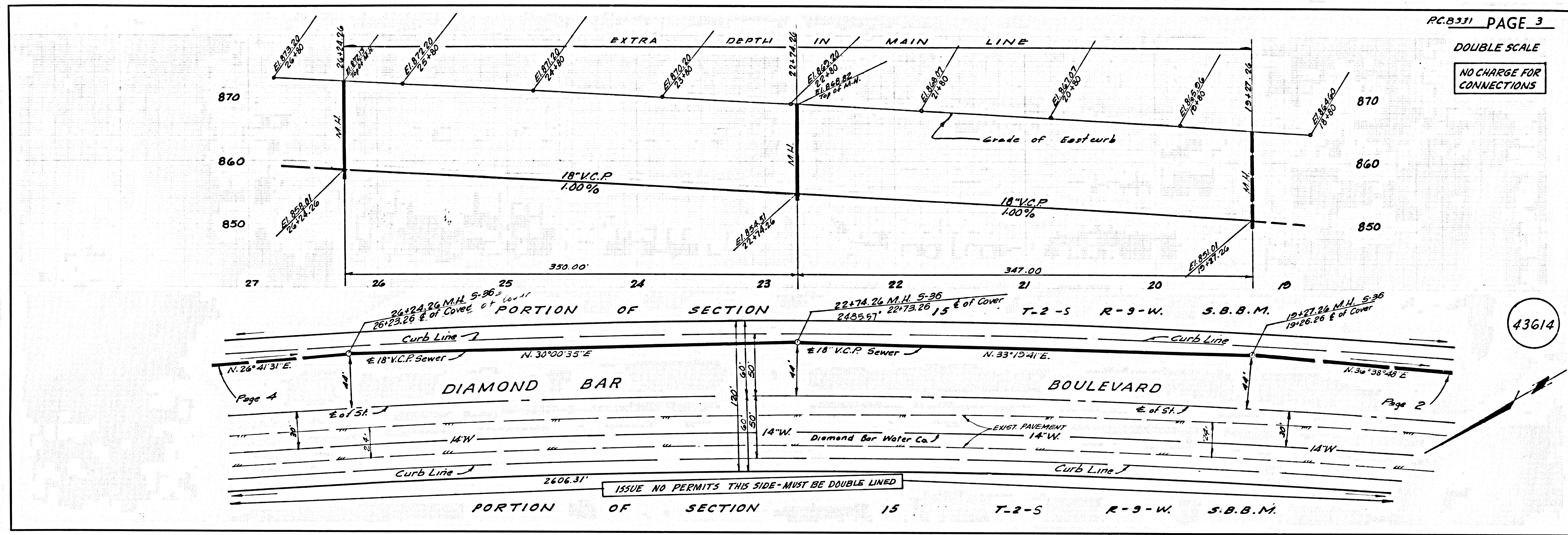
NOTE:
GRADES TO WHICH THIS IMPROVEMENT IS TO BE CONSTRUCTED ARE SHOWN ON PLANS AND PROFILES. GRADE POINTS FOR TOP OF CURBS, CENTER LINE OF STREETS, OR CENTER LINE OF ALLEYS ARE SHOWN BY CIRCLES ON PROFILES AT ALL POINTS BETWEEN DESIGNATED POINTS. THE GRADE SHALL BE ESTABLISHED SO AS TO CONFORM TO A STRAIGHT LINE DRAWN BETWEEN SAID DESIGNATED POINTS. ELEVATIONS ARE IN FEET ABOVE U.S.C. & G.S. SEA LEVEL DATUM OF 1929.
WORK SHALL BE CONSTRUCTED ACCORDING TO THE STANDARD SPECIFICATIONS FOR PUBLIC WORKS CONSTRUCTION (LATEST EDITION) WITH THE EXCEPTIONS AND COUNTY ENGINEER SPECIAL PROVISIONS AND THE CONSTRUCTION OF SANITARY SEWERS DATED APRIL 1958, AND SHALL BE SUPERVISED ONLY IN THE PRESENCE OF THE COUNTY ENGINEER.
BEFORE WORK CAN BE STARTED, THE CONTRACTOR MUST OBTAIN A PERMIT TO EXCAVATE IN COUNTY STREETS FROM THE L.A. COUNTY ROAD DEPT. DISTRICT OFFICE NO. 2 AND PAY A FEE TO THE COUNTY ENGINEER, ROOM 700 BROADWAY, LOS ANGELES, CALIF. \$100.00. APPROVAL OF THIS PLAN BY THE COUNTY OF LOS ANGELES DOES NOT CONSTITUTE A REPRESENTATION AS TO THE ACCURACY OF THE LOCATION OF OR THE EXISTENCE OR NON-EXISTENCE OF ANY UNDERGROUND UTILITY PIPE, OR STRUCTURE WITHIN THE LIMITS OF THIS PROJECT. THIS NOTE APPLIES TO ALL PAGES.
IF WORK IS TO BE DONE IN A STATE HIGHWAY, A PERMIT MUST BE OBTAINED FROM THE STATE OF CALIFORNIA, DIVISION OF HIGHWAYS, 120 SOUTH SPRING STREET, LOS ANGELES, CALIFORNIA.

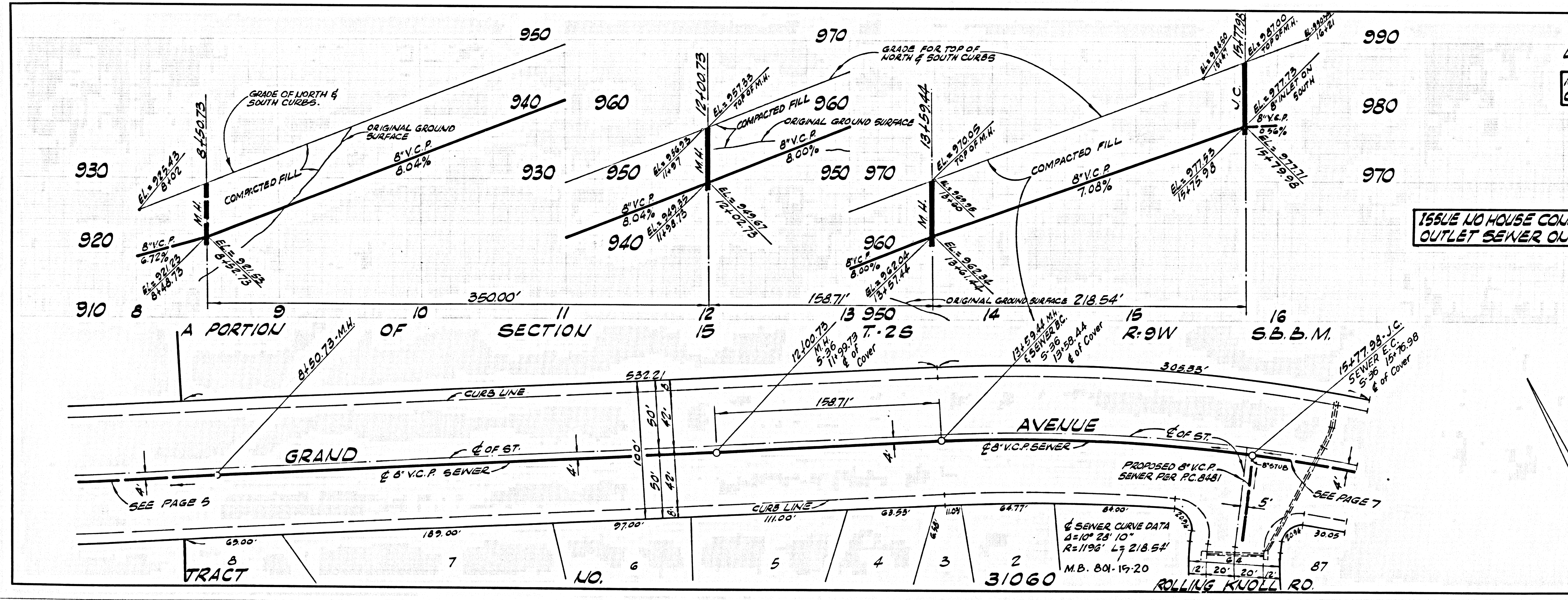
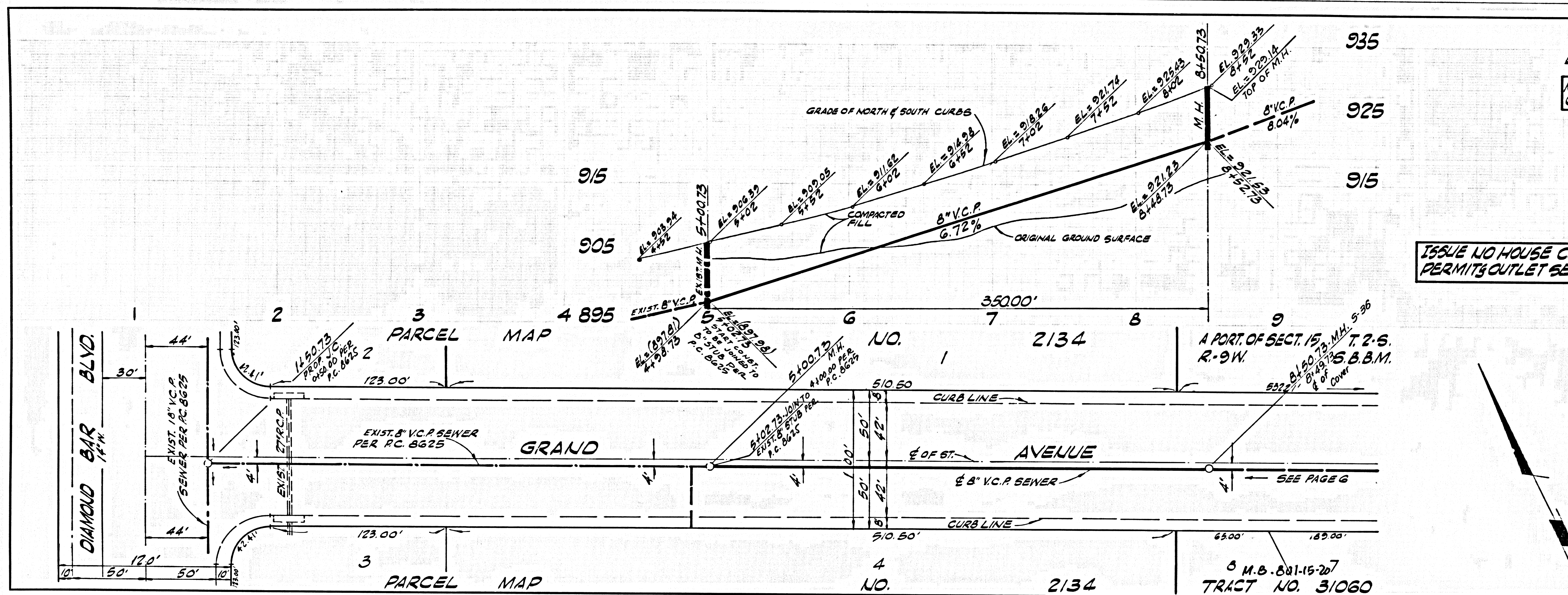
COUNTY OF LOS ANGELES, CALIFORNIA
JOHN A. LAMBE, COUNTY ENGINEER
APPROVED BY: *[Signature]* 1-18-70
ASSISTANT DIVISION ENGINEER

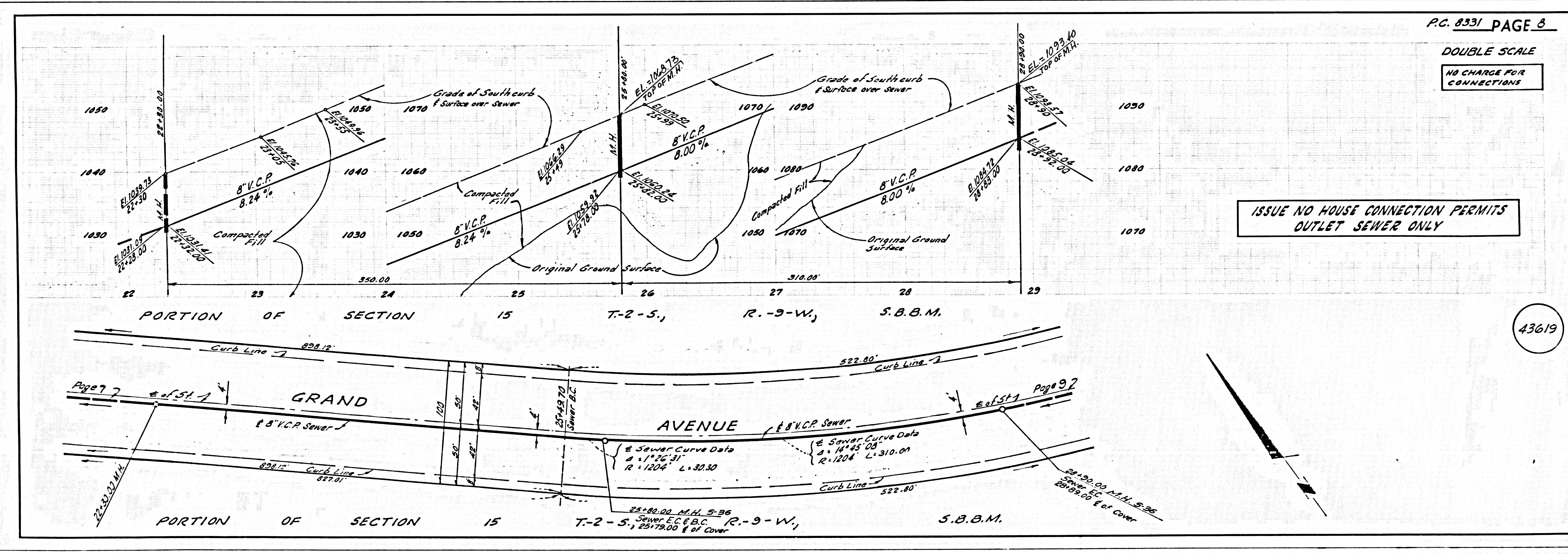
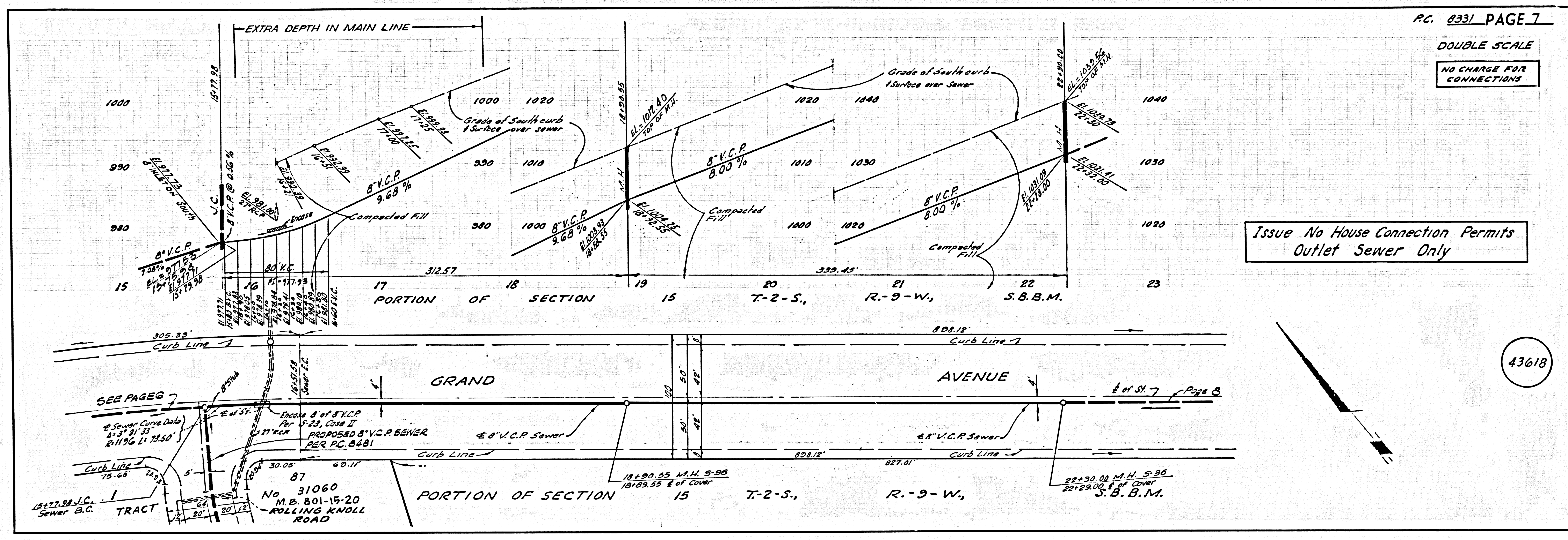
J. D. PARKHURST, CHIEF ENGINEER
CO. SAN. DIST. NO. 10
APPROVED BY: *[Signature]*
OFFICE ENGINEER

CHECKED BY: *[Signature]* 1/19/70
REG. C.E. NO. 13946



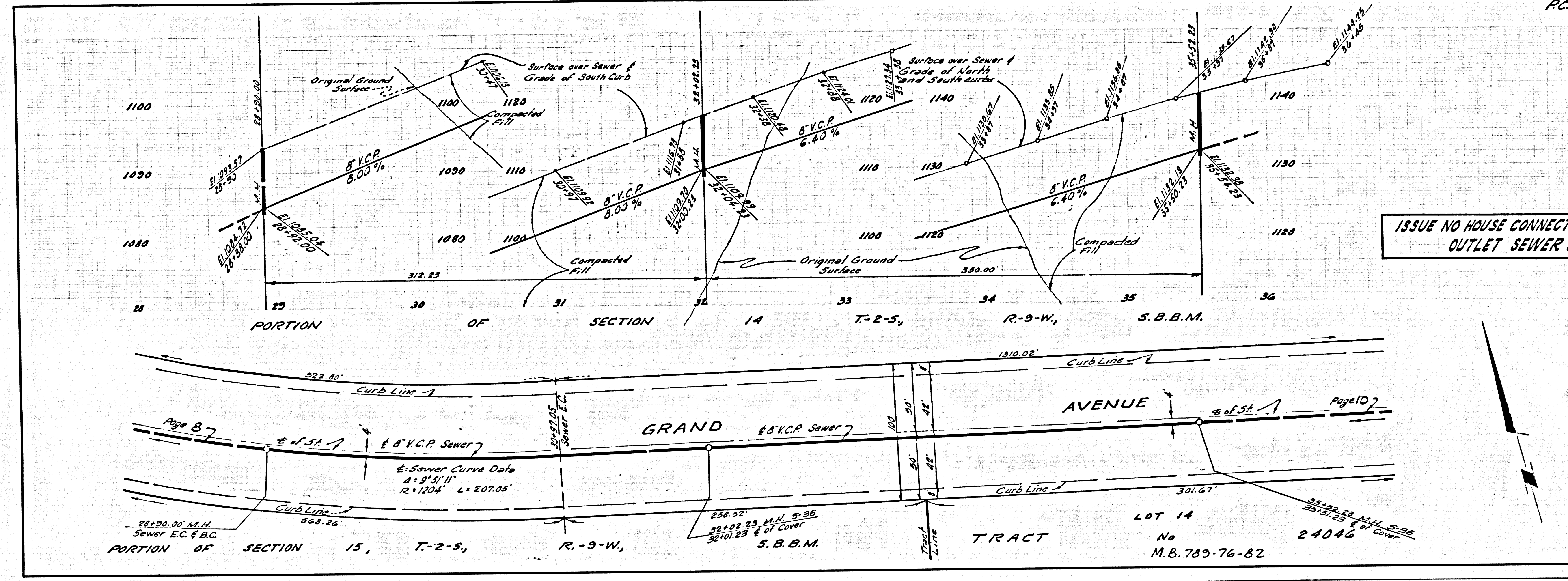






DOUBLE SCALE

NO CHARGE FOR CONNECTIONS

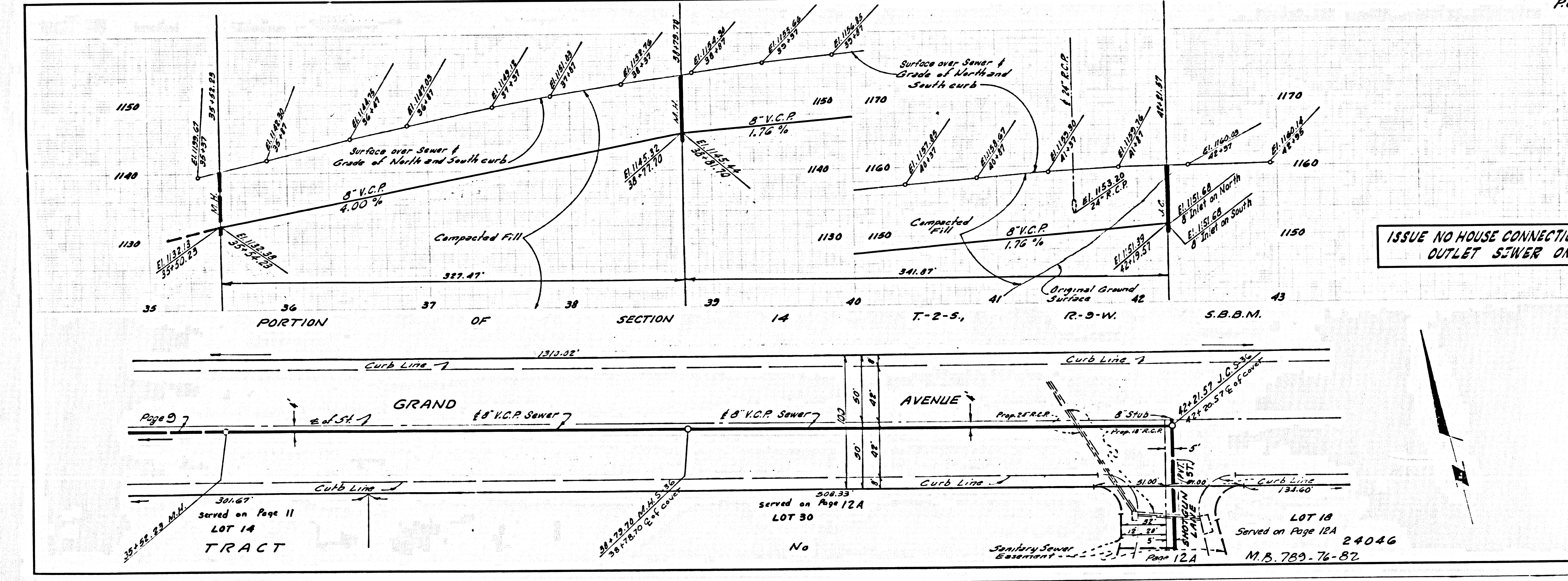


ISSUE NO HOUSE CONNECTION PERMITS
OUTLET SEWER ONLY

43620

DOUBLE SCALE

NO CHARGE FOR CONNECTIONS



ISSUE NO HOUSE CONNECTION PERMITS
OUTLET SEWER ONLY

43621

