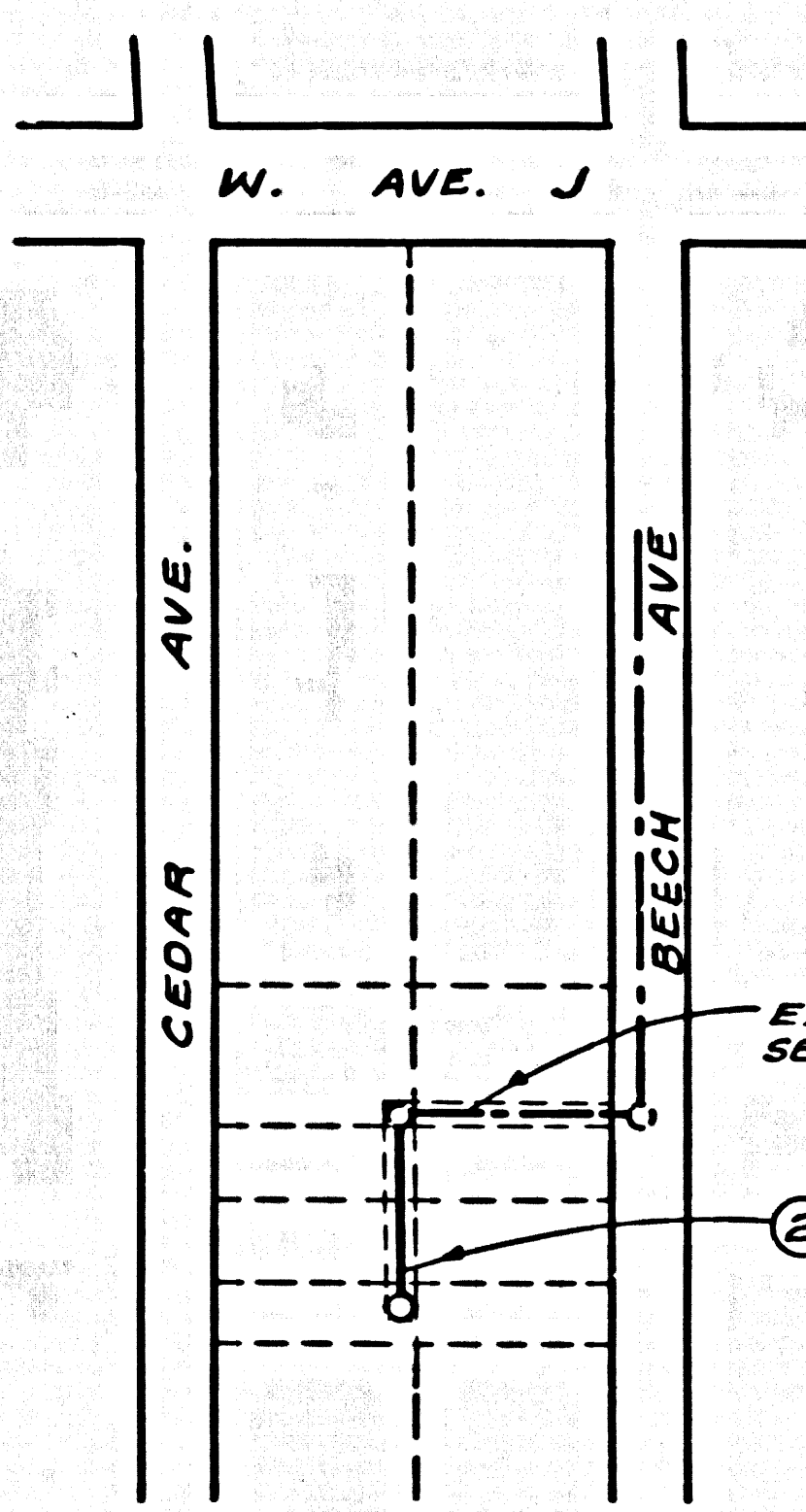


B.M. PL 2711 ELEV. 2373.379
 AD 5M TAG SCB 4 FT E. DRAW @
 SE COR AVE J + CEDAR AVE 30 FT
 E + 42 FT S C/L INT
 LANCASTER QUAD. 19 65



P.C. 8332
 INDEX MAP
 SCALE: 1"=200'

LANCASTER BLDG. DIST. NO. 8.D

PROFILE, ALIGNMENT AND GRADE OF
 SANITARY SEWERS P.C. 8332
 CONSTRUCTED IN PAGE 1

RIGHT OF WAY
 BET. CEDAR & BEECH AVE.'S
 PRIVATE CONTRACT NO. 8332

W.S. TO
 1 SHEETS; 1 PAGES
 SCALE: VERT. 1"=4' JULY, 1969
 HORIZ. 1"=40'
 PREPARED IN THE OFFICES OF
 LOWELL W. FELT
 38856 N. 25 TH ST. E.
 PALMDALE, CALIF.
 BY: Lowell W. Felt
 REG. C. E. NO. 8732

41399

- NOTES:
1. HOUSES TO BE CONSTRUCTED WITH SEWERS AS PROPERTY LINE 4 FEET BELOW CURB GRADE EXCEPT AS NOTED.
 2. PROVIDE STAKES ON THE PROPERTY LINE OR PROPERTY LINES PRODUCED AT RIGHT ANGLES TO THE SEWER LINE AT THE CENTER LINE OF EACH MANHOLE.
 3. NO REPRESENTATIVE OF THE COUNTY ENGINEER WILL SURVEY OR LAY OUT ANY PORTION OF THE WORK.
 4. THE PRIVATE ENGINEER SHALL FURNISH THE COUNTY ENGINEER WITH GRADE SHEETS AND STATIONING FOR ALL HOUSE LATERALS AND "T" OR "T" BRANCHES AND SHALL PROVIDE STAKES FOR THEM AT THEIR PROPER LOCATIONS WITH STATIONING PLAINLY MARKED. ALL HOUSE LATERALS SHALL BE CONSTRUCTED AT RIGHT ANGLES FROM THE MAIN LINE SEWER EXCEPT AS SHOWN ON THE PLANS. HOUSE LATERALS FROM CHIMNEYS SHALL HAVE AN ANGLE OF LESS THAN 45° WITH THE MAIN LINE SEWER AND CHANGE IN ALIGNMENT SHALL BE INDICATED BY THE PRIVATE ENGINEER.
 5. THE PRIVATE ENGINEER SHALL FURNISH THE HOUSE LATERAL SEWER AT THE PROPERTY LINE BELOW THE TOP OF CURB OR GRADE FOR EACH HOUSE LATERAL ON THE GRADE SHEET.
 6. NO REVISIONS SHALL BE MADE IN THESE PLANS WITHOUT THE APPROVAL OF THE COUNTY ENGINEER.
 7. THE CONTRACTOR SHALL NOTIFY THE CONSTRUCTION DIVISION BY TELEPHONE, MADISON 9-4747, EXT. 8159, AT LEAST TWENTY-FOUR HOURS BEFORE STARTING ANY WORK UNDER THIS CONTRACT.
 8. ALL STRUCTURES SHALL BE BRICK MANHOLES PER S 2 80-PRECAST-CONCRETE MANHOLES PER S 2 80 OR S 2 80-SHEFF AS NOTED.
 9. "T" OR "T" BRANCHES MAY BE USED FOR CONNECTIONS TO MAINLINE SEWERS EXCEPT AS NOTED.
 10. MANHOLE TOPS IN UNIMPROVED RIGHTS OF WAY TO BE SIX INCHES ABOVE FINISHED GRADE.
 11. USE EXTRA STRENGTH PIPE. ALL PIPE IS STANDARD DEPTH EXCEPT AS NOTED.
 12. WITHIN CLAY PIPE JOINTS SHALL BE TYPE "B", "F", OR "G" PER STANDARD SPECIFICATIONS SECTION 208-2.
 13. IF A POWER POLE IS WITHIN THREE FEET OF THE SEWER, THE SEWER SHALL BE ENCASED, PER S 25, TWO FEET ON EACH SIDE FROM THE POINT OF INTERFERENCE.
 14. IF DURING THE COURSE OF CONSTRUCTION IT IS DETERMINED THAT THERE IS LESS THAN FOUR FEET OF COVER OVER THE TOP OF A MAIN LINE OR HOUSE LATERAL V.C.P. SEWER WHICH IS NOT INDICATED ON THE PLANS, THE PIPE SHALL BE ENCASED PER S 25, UNLESS OTHERWISE APPROVED BY THE COUNTY ENGINEER.
 15. RESURFACE ALL TRENCHES WITHIN PAVED AREAS TO MEET L.A. COUNTY ROAD DEPT. OR CALIFORNIA STATE HIGHWAY REQUIREMENTS IN ACCORDANCE WITH PERMITS.
 16. SEWERS TO BE TESTED FOR LEAKAGE PER SECTION 206-2.3.7 OF THE STANDARD SPECIFICATIONS.
 17. REFER TO SECTION 208-1.1 OF THE STANDARD SPECIFICATIONS, REGARDING SAFETY CHARGES.
 18. ALL JOINTS BETWEEN CAST IRON PIPE AND WITHIN CLAY PIPE SHALL BE MADE WITH A RUBBER SLEEVE JOINT, TYPE "C" OR "B", WITHIN BUILDING IF NECESSARY PER STANDARD SPECIFICATIONS, SECTION 208-2.

THE FOLLOWING LATEST REVISED STANDARD PLANS ON FILE IN THE OFFICE OF THE COUNTY ENGINEER SHALL APPLY IN THE CONSTRUCTION OF THIS PROJECT:

LEGEND	S 1
MINIMUM PUBLIC SAFETY REQUIREMENTS	S 2
BRICK MANHOLE	S 3
PRECAST-CONCRETE MANHOLE	S 4
REINFORCED PRECAST-CONCRETE MANHOLE	S 5
MANHOLE FRAME AND COVER	S 6
STANDARD MANHOLE STEP	S 7
REGIONS FOR SEWER PIPE	S 8
CRACKING AND ENCASING	S 9
WYE OR TEE SUPPORT	S 10
ALLOWABLE TRENCH WIDTHS	S 11

County Sanitation Districts shall be notified prior to the following so that required inspection can be made (Section 207-1.02B & 208-2.000)

Acceptance of the project.

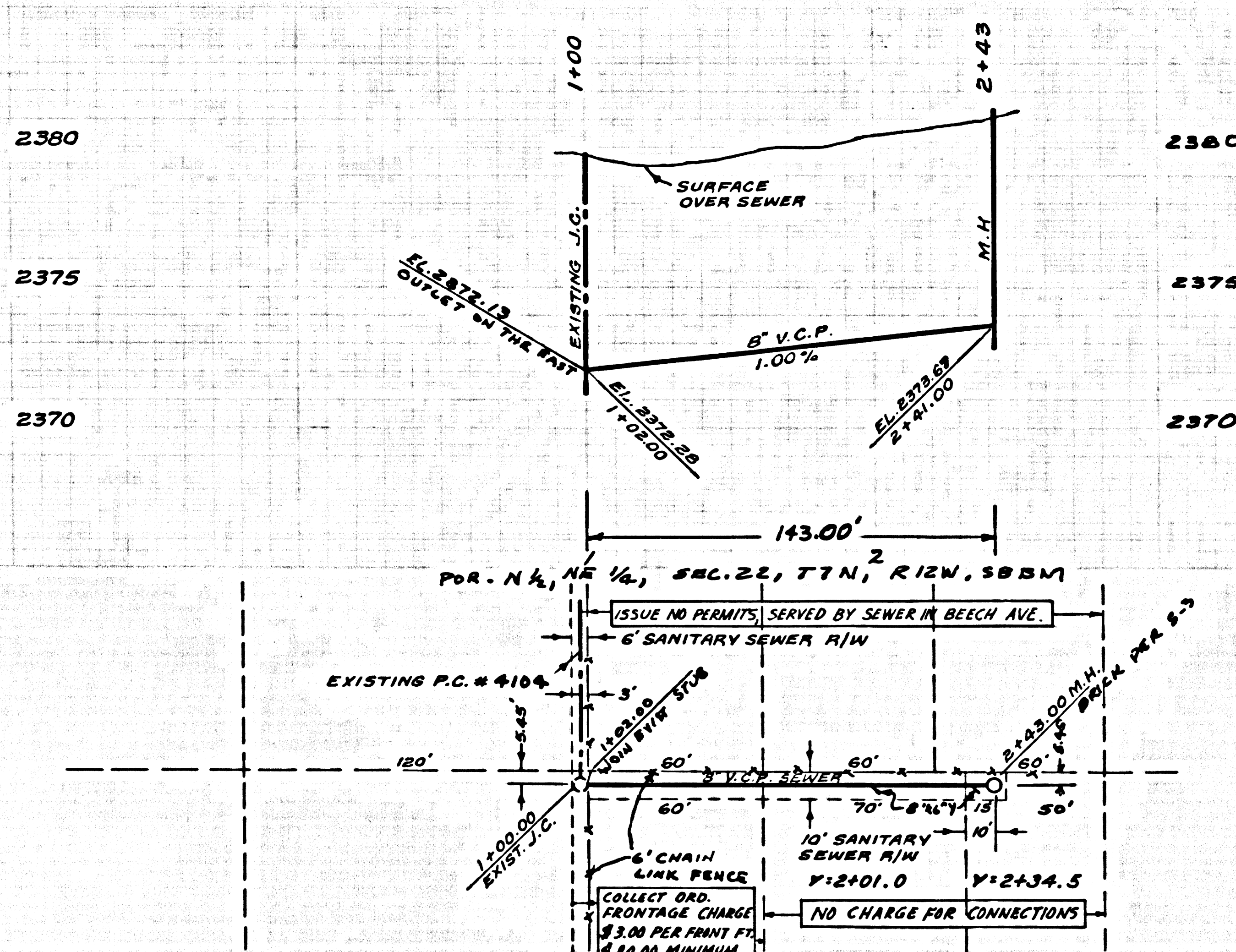
No connection for the disposal of industrial wastes shall be made to sewers shown on these drawings without written permission from the Chief Engineer and District Managers of the County Sanitation Districts.

NOTE:
 GRADES TO WHICH THIS IMPROVEMENT IS TO BE CONSTRUCTED ARE SHOWN ON PLANS AND PROFILES. GRADE POINTS FOR TOP OF CURBS, CENTER LINE OF STREETS, OR CENTER LINE OF ALLEYS ARE SHOWN BY CIRCLES ON PROFILES. AT ALL POINTS BETWEEN DESIGNATED POINTS THE GRADE SHALL BE ESTABLISHED SO AS TO CONFORM TO A STRAIGHT LINE DRAWN BETWEEN SAID DESIGNATED POINTS. ELEVATIONS ARE IN FEET ABOVE U.S.C. & G.S. SEA LEVEL DATUM OF 1929.
 WORK SHALL BE CONSTRUCTED ACCORDING TO THE STANDARD SPECIFICATIONS FOR PUBLIC WORKS CONSTRUCTION AND SPECIAL PROVISIONS FOR THE CONSTRUCTION OF SANITARY SEWERS LATERALS, 1968 AS REVISED, AND SHALL BE PROSECUTED ONLY IN THE PRESENCE OF THE COUNTY ENGINEER.
 BEFORE WORK CAN BE STARTED, THE CONTRACTOR MUST OBTAIN A PERMIT TO EXCAVATE IN COUNTY STREETS FROM THE L.A. COUNTY ROAD DEPT., DISTRICT OFFICE NO. 8, AND PAY A FEE TO THE COUNTY ENGINEER, ROOM 138, COUNTY ENGINEERING BUILDING, 106 WEST SECOND STREET OR, ANTELOPE VALLEY REGIONAL OFFICE, SUITE 101 TO COVER THE COST OF CONSTRUCTION INSPECTION AND RECORD PLANS.
 APPROVAL OF THIS PLAN BY THE COUNTY OF LOS ANGELES DOES NOT CONSTITUTE A REPRESENTATION AS TO THE ACCURACY OF THE LOCATION OF OR THE EXISTENCE OR NON-EXISTENCE OF ANY UNDERGROUND UTILITY PIPE, OR STRUCTURE WITHIN THE LIMITS OF THIS PROJECT. THIS NOTE APPLIES TO ALL PAGES.
 IF WORK IS TO BE DONE IN A STATE HIGHWAY, A PERMIT MUST BE OBTAINED FROM THE STATE OF CALIFORNIA, DIVISION OF HIGHWAYS, 130 SOUTH SPRING STREET, LOS ANGELES, CALIFORNIA.

COUNTY OF LOS ANGELES, CALIFORNIA
 JOHN A. LAMBIE, COUNTY ENGINEER J. D. PARKHURST, CHIEF ENGINEER
 CO. SAN. DIST. 13
 APPROVED BY: [Signature] 9-15-69 APPROVED BY: [Signature] OFFICE ENGINEER
 REGIONAL ENGINEER STATE
 CHECKED BY: [Signature] 9-25-69
 REG. C. E. NO. 16182

COLLECT CHARGES AS INDICATED

J.N. 0369.94



P.C. 8332 PAGE 2

COLLECT CHARGES AS INDICATED

41400