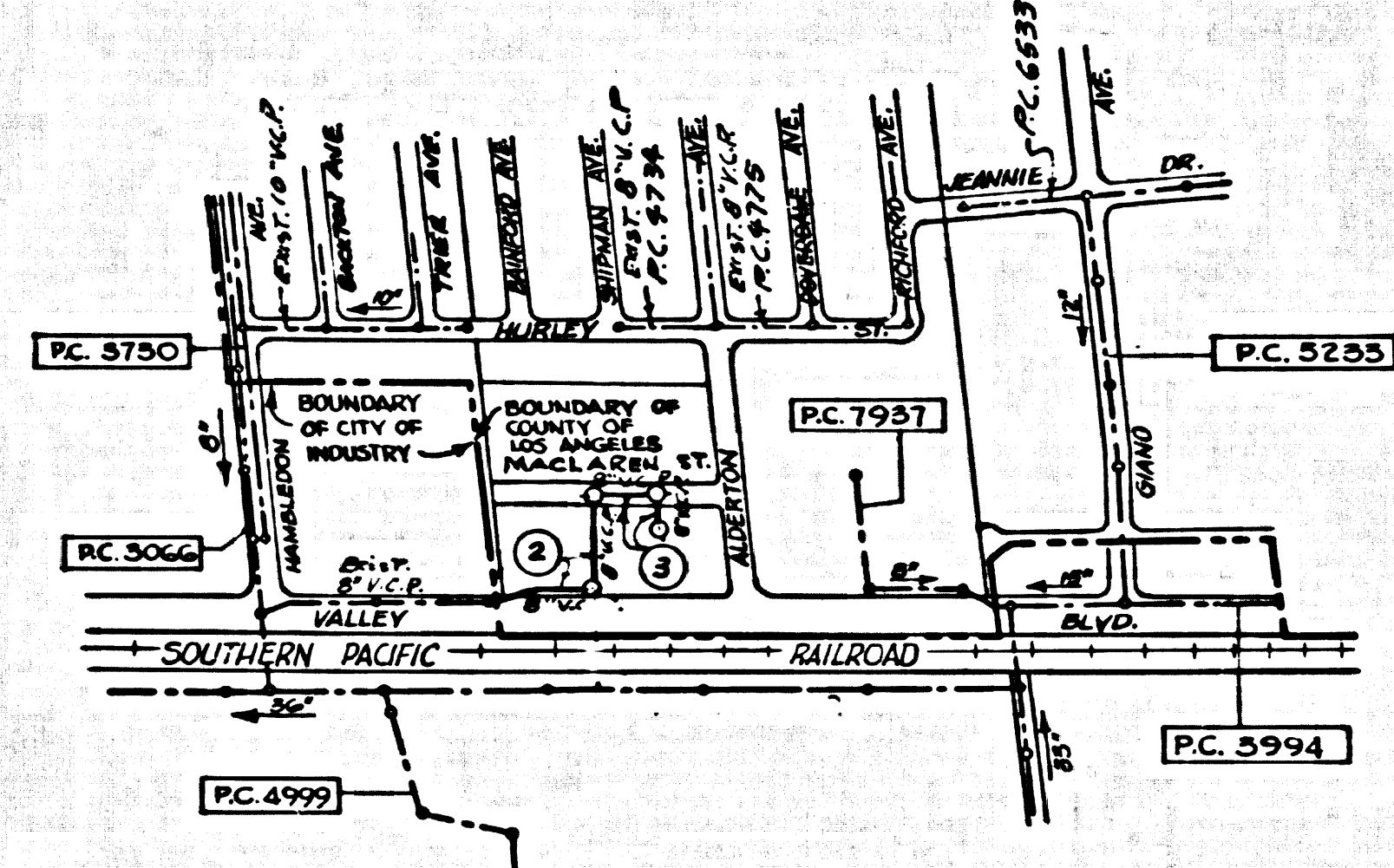


B.M. B.S. 1746 ELEV. 390.076  
 100' MON. IN WELL 8' DI. ON E INT.  
 VALLEY BLVD. & HAMBLEDON AVE.  
 OTTERBEIN QUAD. 1965



P.C. 8333  
 INDEX MAP  
 SCALE: 1" = 600'  
 ② INDICATES PAGE NOS.

LA PUENTE BLDG. DIST. NO. 2

PROFILE ALIGNMENT AND GRADE OF  
 SANITARY SEWERS P.C. 8333  
 CONSTRUCTED IN PAGE 1

PARCEL MAPS 964 & 1036  
 PRIVATE CONTRACT NO. 8333

W.S. 38  
 2 SHEETS, 3 PAGES

SCALE: VERT. 1" = 4'  
 HORIZ. 1" = 40' AUGUST 1969  
 PREPARED IN THE OFFICES OF

41368

By: E. J. Johnson 10/16/69  
 REG. C. E. NO. 58281

FOR LEGEND SEE PLAN NO. S-1

- NOTES:
1. PROFILE STAKES ON THE PROPERTY LINE OR PROPERTY LINES PRODUCED AT RIGHT ANGLES TO THE SEWER LINE AT THE CENTER LINE OF EACH MANHOLE.
  2. NO REPRESENTATIVE OF THE COUNTY ENGINEER WILL SURVEY OR LAY OUT ANY PORTION OF THE WORK.
  3. THE PRIVATE ENGINEER SHALL FURNISH THE COUNTY ENGINEER WITH GRADE SHEETS AND STATIONING FOR ALL HOUSE LATERALS AND "T" OR "Y" BRANCHES AND SHALL PROVIDE STAKES FOR THEM AT THEIR PROPER LOCATIONS WITH STATIONING PLAINLY MARKED. ALL HOUSE LATERALS SHALL BE CONSTRUCTED IN A STRAIGHT ALIGNMENT AT RIGHT ANGLES FROM THE MAIN LINE SEWER EXCEPT AS SHOWN ON THE PLANS. HOUSE LATERALS FROM CHIMNEYS SHALL NOT HAVE AN ANGLE OF LESS THAN 45° WITH THE MAIN LINE SEWER. ANY CHANGE IN ALIGNMENT SHALL BE REQUESTED IN WRITING BY THE PRIVATE ENGINEER.
  4. THE PRIVATE ENGINEER SHALL FURNISH THE HOUSE LATERAL DEPTH AT THE PROPERTY LINE BELOW THE TOP OF CURB ELEVATION FOR EACH HOUSE LATERAL ON THE GRADE SHEET.
  5. NO REVISIONS SHALL BE MADE IN THESE PLANS WITHOUT THE APPROVAL OF THE COUNTY ENGINEER.
  6. THE CONTRACTOR SHALL NOTIFY THE CONSTRUCTION DIVISION BY TELEPHONE, HAMBSON 8-4747, EXT. 81581, AT LEAST TWENTY-FOUR HOURS BEFORE STARTING ANY WORK UNDER THIS CONTRACT.
  7. ALL STRUCTURES SHALL BE EITHER BRICK MANHOLES PER S-3 OR PRECAST CONCRETE MANHOLES PER S-4, EXCEPT AS NOTED.
  8. "Y" OR "T" BRANCHES SHALL BE USED FOR CONNECTIONS TO MANHOLES. SHALL BE EXCEPT AS NOTED.
  9. MANHOLE TOP IN IMPROVED RIGHTS-OF-WAY TO BE LEVEL WITH FINISHED GRADE.
  10. USE EXTRA STRENGTH PIPE. ALL PIPE IS STANDARD DEPTH EXCEPT AS NOTED.
  11. VITRIFIED CLAY PIPE JOINTS SHALL BE "TYPED"; "T" OR "G" PER STD. SPECS. SEC. 808-2.
  12. IF A POWER POLE IS WITHIN THREE FEET OF THE SEWER, THE SEWER SHALL BE ENCASED, PER S-25, TWO FEET ON EACH SIDE FROM THE POINT OF INTERFERENCE.
  13. IF DURING THE COURSE OF CONSTRUCTION IT IS DETERMINED THAT THERE IS LESS THAN FOUR FEET OF COVER OVER THE TOP OF A MAIN LINE OR HOUSE LATERAL V.C.P. SEWER WHICH IS NOT INDICATED ON THE PLANS, THE PIPE SHALL BE ENCASED PER S-25, UNLESS OTHERWISE APPROVED BY THE COUNTY ENGINEER.
  14. HOUSE LATERALS TO BE CONSTRUCTED WITH 1/2" RIG PER FOOT TO PROPERTY LINE.
  15. RESURFACE ALL TRENCHES WITHIN PAVED AREAS TO MEET L.A. COUNTY ROAD DEPT. OR CALIFORNIA STATE HIGHWAY REQUIREMENTS IN ACCORDANCE WITH PERMITS.
  16. SEWERS TO BE TESTED FOR LEAKAGE PER SECTION 304-217 UNIFORM STANDARD SPECIFICATIONS.
  17. REFER TO SECTION 7-10.4.1 OF THE STD. SPECS. REGARDING SAFETY ORDERS.
  18. THE FOLLOWING LATEST REVISED STANDARD PLANS ON FILE IN THE OFFICE OF THE COUNTY ENGINEER SHALL APPLY IN THE CONSTRUCTION OF THIS PROJECT.

COLLECT CHARGES AS INDICATED

County Sanitation Districts shall be notified prior to the following so that required inspection can be made (Form 302-308 & necessary acceptance of the project).

NO HOUSE CONNECTION PERMITS WILL BE ISSUED UNTIL SANITARY SEWER EASEMENTS ARE VESTED IN THE COUNTY OF LOS ANGELES

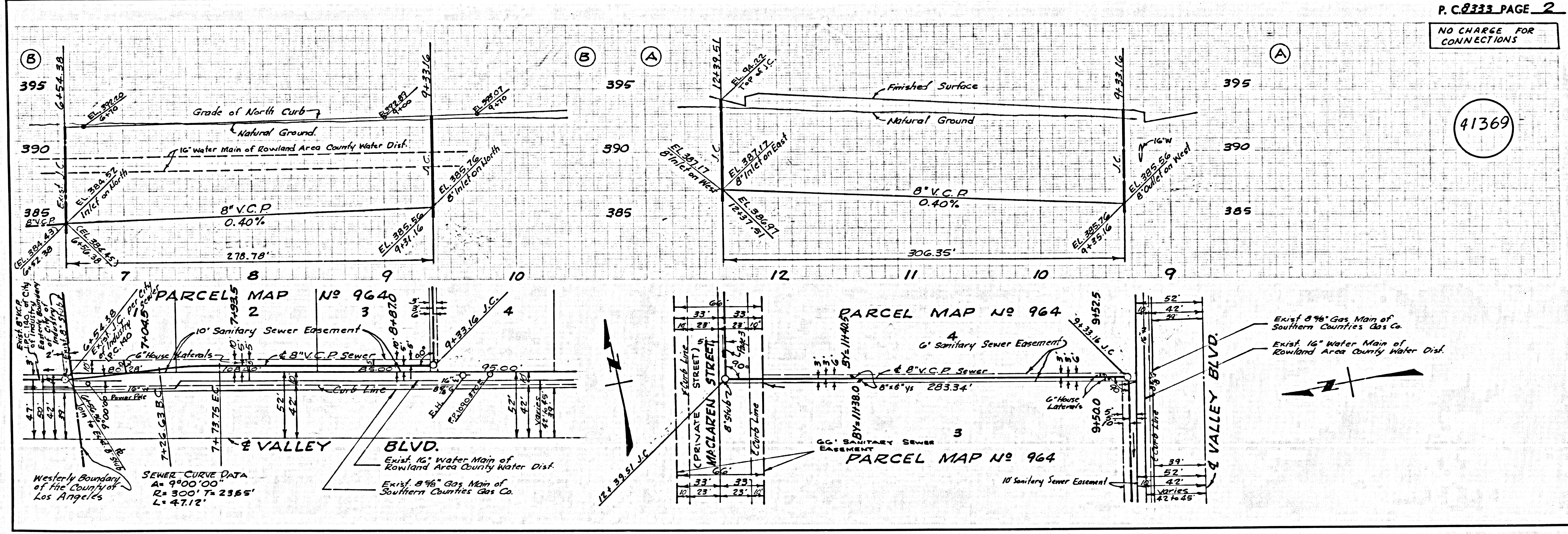
No connections for the disposal of industrial wastes shall be made to sewers shown on these drawings without written permission from the Chief Engineer and District Manager of the County Sanitation Districts.

NOTE: GRADES TO WHICH THIS IMPROVEMENT IS TO BE CONSTRUCTED ARE SHOWN ON PLANS AND PROFILE. GRADE POINTS FOR TOP OF CURBS, CENTER LINE OF STREETS, OR CENTER LINE OF ALLEYS ARE SHOWN BY CIRCLES ON PROFILES. AT ALL POINTS BETWEEN DESIGNATED POINTS THE GRADE SHALL BE ESTABLISHED SO AS TO CONFORM TO A STRAIGHT LINE BETWEEN SAID DESIGNATED POINTS. ELEVATIONS ARE IN FEET ABOVE U.S.C. & G.S. SEA LEVEL DATUM OF 1929. THIS DRAWING AND THE DATA HEREON ARE HEREBY MADE A PART OF THE SPECIFICATIONS. WORK SHALL BE CONSTRUCTED ACCORDING TO THE UNIFORM STANDARD SPECIFICATIONS FOR PUBLIC WORKS CONSTRUCTION AND COUNTY ENGINEER SPECIAL PROVISIONS DATED JANUARY 25, 1952, AS REVISED, AND SHALL BE PROCEEDED ONLY IN THE PRESENCE OF THE COUNTY ENGINEER. BEFORE WORK CAN BE STARTED, THE CONTRACTOR MUST OBTAIN A PERMIT TO EXCAVATE IN COUNTY STREETS FROM THE L.A. COUNTY ROAD DEPT., DISTRICT OFFICE NO. 1, AND PAY A FEE TO THE COUNTY ENGINEER, ROOM 350, COUNTY ENGINEERING BUILDING, 100 WEST SECOND STREET, LOS ANGELES, CALIFORNIA. LOCAL OFFICE, SUFFICIENT TO COVER THE COST OF CONSTRUCTION INSPECTION AND RECORD PLANS. APPROVAL OF THIS PLAN BY THE COUNTY OF LOS ANGELES DOES NOT CONSTITUTE A REPRESENTATION AS TO THE ACCURACY OF THE LOCATION OF OR THE EXISTENCE OR NON-EXISTENCE OF ANY UNDERGROUND UTILITY PIPE, OR STRUCTURE WITHIN THE LIMITS OF THIS PROJECT. THIS NOTE APPLIES TO ALL PAGES. IF WORK IS TO BE DONE IN A STATE HIGHWAY, A PERMIT MUST BE OBTAINED FROM THE STATE OF CALIFORNIA, DIVISION OF HIGHWAYS, 120 SOUTH SPRING STREET, LOS ANGELES, CALIFORNIA.

COUNTY OF LOS ANGELES, CALIFORNIA  
 JOHN A. LAMBIE, COUNTY ENGINEER J. D. PARKHURST, CHIEF ENGINEER  
 CO. SANITARY NO. 21

APPROVED BY: E. J. Johnson 10/16/69  
 SAM DIMITS REGIONAL ENGINEER APPROVED BY: J. D. Parkhurst  
 OFFICE ENGINEER

CHECKED BY: Ralph Johnson 10/16/69  
 P.C. NO. 13906  
 CITY OF INDOUSTRY  
 APPROVED: Robert Rogers 10-2-69  
 CITY MANAGER



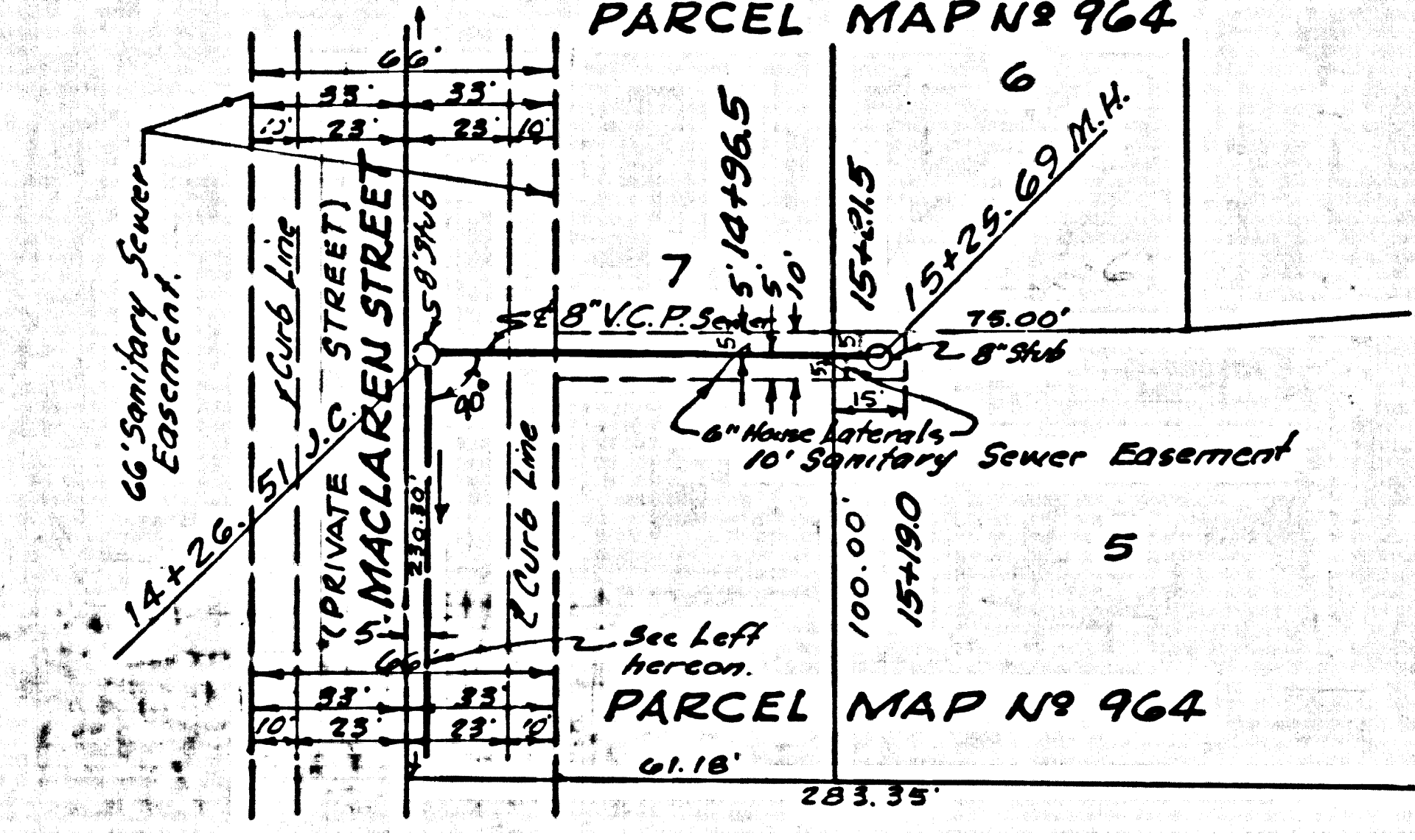
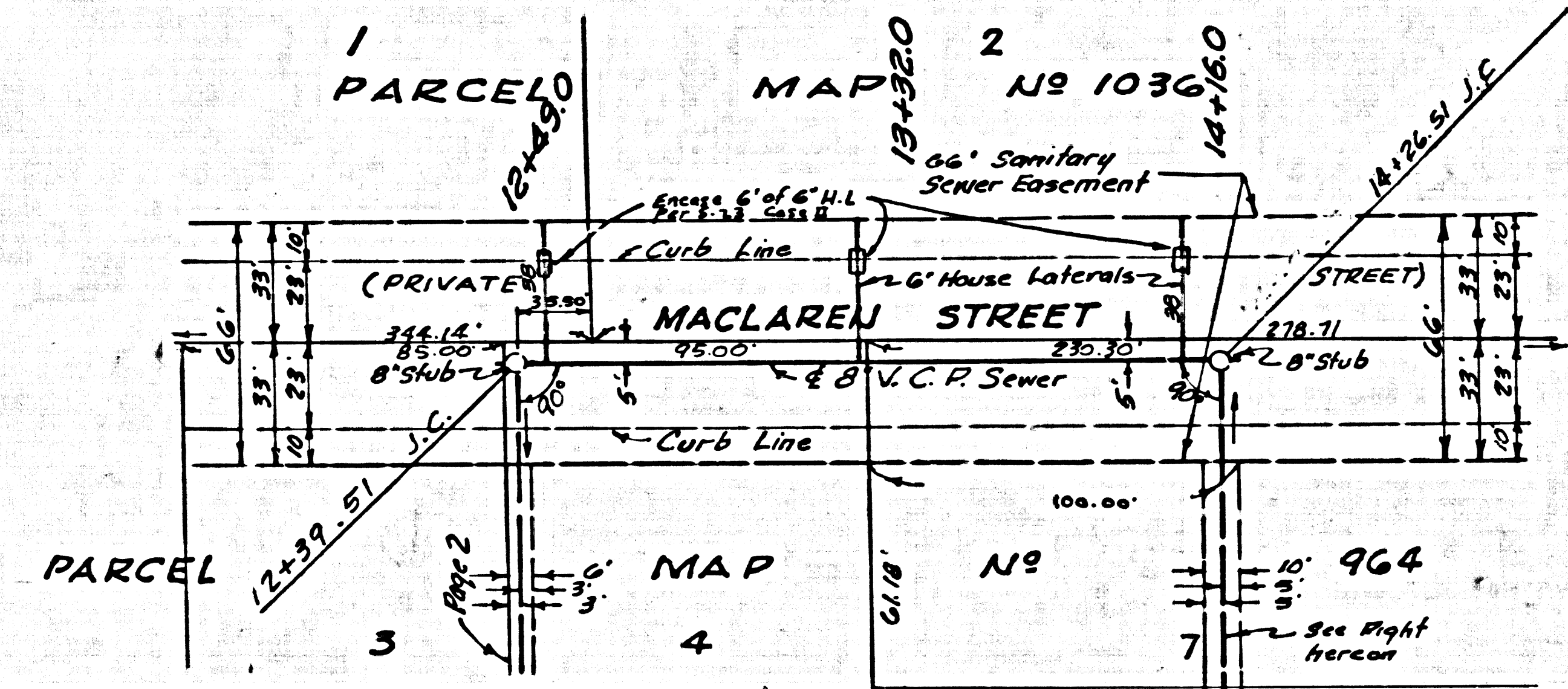
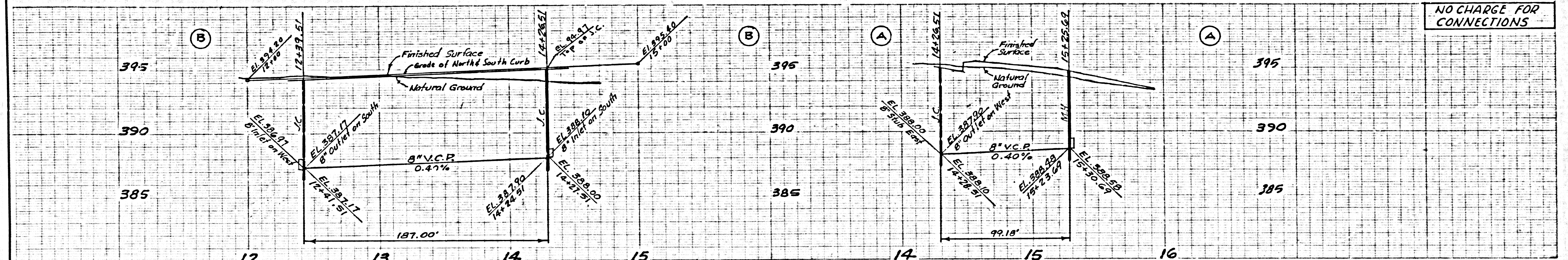
P. C. 8333 PAGE 2

NO CHARGE FOR CONNECTIONS

41369



NO CHARGE FOR CONNECTIONS



41370