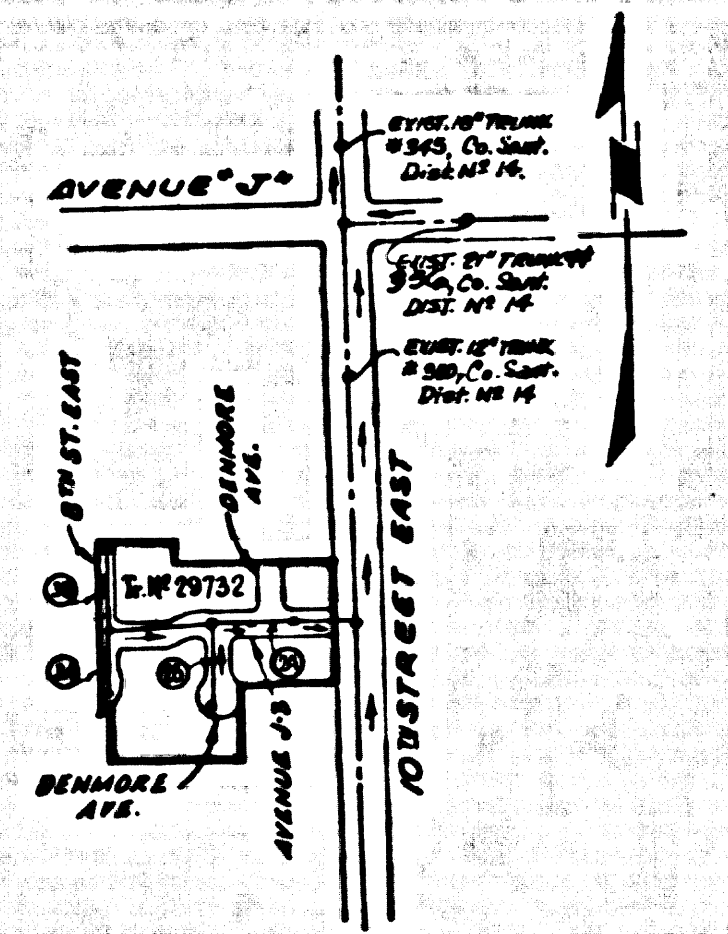


B.M. B.L. 63 ELEV. 2397.77
 L&T. on M.C.R. @ S.W. cor. 10th Street
 East of Avenue J, 48' West of 4th
 South of 4th Int.
 Lancaster QUAD. 1965



NUMBERS IN CIRCLES INDICATE PAGE NUMBERS
 INDEX MAP
 SCALE: 1" = 600'
 P.C. 8337
 TRACT NO. 29732

LANCASTER BLDG. DIST. NO. 8

PROFILE, ALIGNMENT AND GRADE OF
SANITARY SEWERS P.C. 8337
 TO BE CONSTRUCTED IN PAGE 1

TRACT NO. 29732
 PRIVATE CONTRACT NO. 8337

W.S. 70
 2 SHEETS; 3 PAGES
 SCALE: HOR. 1" = 40' VERT. 1" = 4'
 OCTOBER, 1969
 PREPARED IN THE OFFICES OF
 CONSOLIDATED ENGINEERING COMPANY
 8045 WEST OLYMPIA BOULEVARD
 BEVERLY HILLS, CALIFORNIA 90211
 BY: Enrique Cervantes
 REG. C. E. NO. 10915

- NOTES:
- HOUSE LATERALS TO BE CONSTRUCTED WITH INVERTS AT PROPERTY LINE 4 FEET BELOW CURB GRADE EXCEPT AS NOTED.
 - PROVIDE STAKES ON THE PROPERTY LINE OR PROPERTY LINES PRODUCED AT RIGHT ANGLES TO THE SEWER LINE AT THE CENTER LINE OF EACH MANHOLE.
 - NO REPRESENTATIVE OF THE COUNTY ENGINEER WILL SURVEY OR LAY OUT ANY PORTION OF THE WORK.
 - THE PRIVATE ENGINEER SHALL FURNISH 1/4" COUNTY ENGINEER WITH GRADE SHEETS AND STATIONING FOR ALL HOUSE LATERALS AND "T" OR "T" BRANCHES AND J SHALL PROVIDE STAKES FOR THEM AT THEIR PROPER LOCATIONS WITH STATIONING PLAINLY MARKED. ALL HOUSE LATERALS SHALL BE CONSTRUCTED IN A STRAIGHT ALIGNMENT AT RIGHT ANGLES FROM THE MAIN LINE SEWER EXCEPT AS SHOWN ON THE PLANS. HOUSE LATERALS FROM CHIMNEYS SHALL NOT HAVE AN ANGLE OF LESS THAN 45° WITH THE MAIN LINE SEWER. ANY CHANGE IN ALIGNMENT SHALL BE REQUESTED IN WRITING BY THE PRIVATE ENGINEER.
 - THE PRIVATE ENGINEER SHALL FURNISH THE HOUSE LATERAL DEPTH AT THE PROPERTY LINE BELOW THE TOP OF CURB ELEVATION FOR EACH HOUSE LATERAL ON THE GRADE SHEET.
 - NO REVISIONS SHALL BE MADE IN THESE PLANS WITHOUT THE APPROVAL OF THE COUNTY ENGINEER.
 - THE CONTRACTOR SHALL NOTIFY THE CONSTRUCTION DIVISION BY TELEPHONE, MADISON 8-4700, EXT. 8158, AT LEAST TWENTY-FOUR HOURS BEFORE STARTING ANY WORK UNDER THIS CONTRACT.
 - ALL STRUCTURES SHALL BE EITHER BRICK MANHOLES PER 5-2 OR PRECAST CONCRETE MANHOLES PER 5-3 OR 5-4, UNLESS OTHERWISE NOTED.
 - "T" OR "T" BRANCHES MAY BE USED FOR CONNECTIONS TO MAINLINE SEWERS EXCEPT AS NOTED.
 - MANHOLES PER 5-3 OR 5-4 SHALL BE CONSTRUCTED WITH 18" DIA. RINGS PER 5-3 OR 5-4 UNLESS OTHERWISE NOTED.
 - USE EXTRA STRENGTH PIPE, ALL PIPE IS STANDARD DEPTH EXCEPT AS NOTED.
 - VERTICAL CLAY PIPE JOINTS SHALL BE TYPE "B", "T", OR "C" PER STANDARD SPECIFICATIONS SECTION 200-2.
 - IF A POWER POLE IS WITHIN THREE FEET OF THE SEWER, THE SEWER SHALL BE ENCASED, PER 5-2, TWO FEET ON EACH SIDE FROM THE POINT OF INTERFERENCE.
 - IF DURING THE COURSE OF CONSTRUCTION IT IS DETERMINED THAT THERE IS LESS THAN FOUR FEET OF COVER OVER THE TOP OF A MAIN LINE OR HOUSE LATERAL V.C.P. SEWER WHICH IS NOT INDICATED ON THE PLANS, THE PIPE SHALL BE ENCASED PER 5-2, UNLESS OTHERWISE APPROVED BY THE COUNTY ENGINEER.
 - RESURFACE ALL TRENCHES WITHIN PAVED AREAS TO MEET L.A. COUNTY ROAD DEPT. SPECIFICATIONS PER 5-2 UNLESS OTHERWISE APPROVED BY THE COUNTY ENGINEER.
 - SEWERS TO BE TESTED FOR LEAKAGE PER SECTION 200-2.3.7 OF THE STANDARD SPECIFICATIONS.
 - REFER TO SECTION 219-4.1 OF THE STANDARD SPECIFICATIONS, REGARDING SAFETY DEVICES.
 - ALL JOINTS BETWEEN CAST IRON PIPE AND VITRIFIED CLAY PIPE SHALL BE MADE WITH A RUBBER SLEEVE JOINT, TYPE "C" OR "D", FIFTH BUSHING IF NECESSARY PER STANDARD SPECIFICATIONS, SECTION 200-2.
- THE FOLLOWING LATEST REVISED STANDARD PLANS ON FILE IN THE OFFICE OF THE COUNTY ENGINEER SHALL APPLY IN THE CONSTRUCTION OF THIS PROJECT:

BRICK	5-2
MANHOLE RINGS SAFETY REQUIREMENTS	5-3
BRICK MANHOLE	5-3
NON-REINFORCED PRECAST CONCRETE MANHOLE	5-3
REINFORCED PRECAST CONCRETE MANHOLE	5-4
MANHOLE FRAME AND COVER	5-11
STANDARD MANHOLE FIT	5-17
REINFORCING FOR SEWER PIPE	5-27
CRACKING AND ENCASEMENT	5-29
SEWER PIPE	5-30
ALUMINUM FITTINGS	5-31

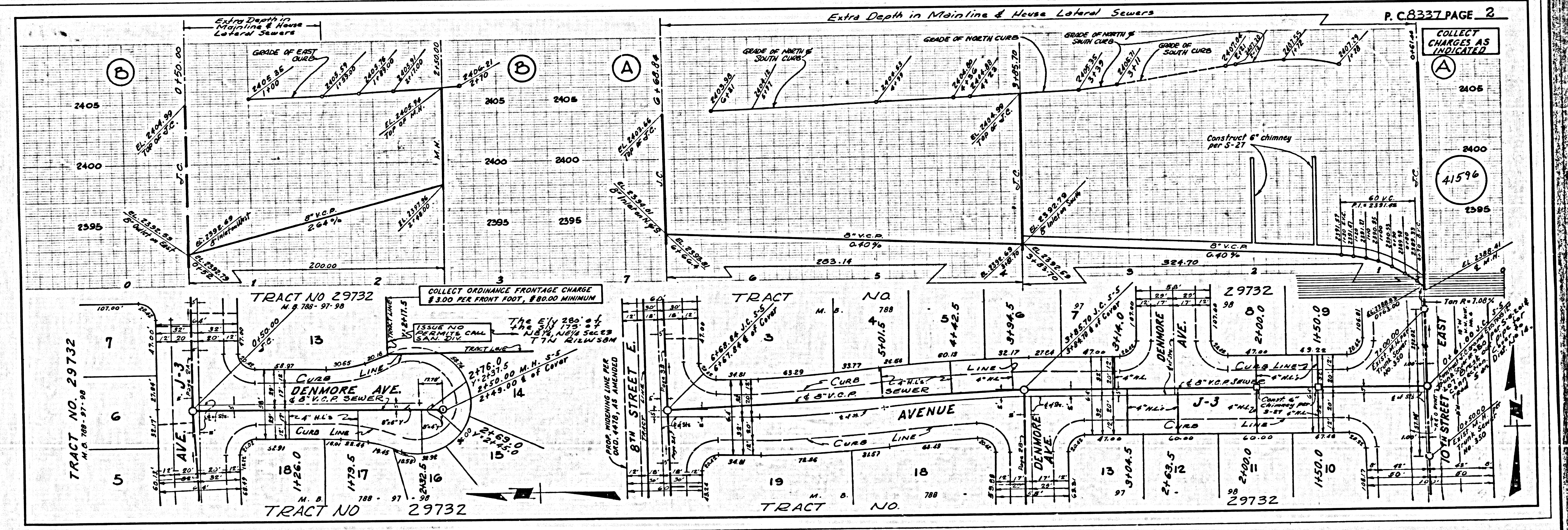
County Sanitation Division shall be notified prior to the following and that involved inspection and be made (Phone 287-1625 - 400-9000)

Responsibility of the project:
 Government of construction of manhole as located track owner.

No construction for the purpose of industrial wastes shall be made in sewer lines or manhole structures. (Show any more and General Manager of the County Sanitation Division)

COLLECT CHARGES AS INDICATED

NOTES:
 GRADES TO WHICH THIS IMPROVEMENT IS TO BE CONSTRUCTED ARE SHOWN ON PLANS AND PROFILE. GRADE POINTS FOR TOP OF CURBS, CENTER LINE OF STREETS, OR CENTER LINE OF ALLEYS ARE SHOWN BY CIRCLES ON PROFILES. AT ALL POINTS BETWEEN DESIGNATED POINTS THE GRADE SHALL BE ESTABLISHED SO AS TO CONFORM TO A STRAIGHT LINE BETWEEN SAID DESIGNATED POINTS. ELEVATIONS ARE IN FEET ABOVE M.S.L. & S.L. SEA LEVEL DATUM OF 1929.
 WORK SHALL BE CONSTRUCTED ACCORDING TO THE STANDARD SPECIFICATIONS FOR PUBLIC WORKS CONSTRUCTION AND SPECIAL PROVISIONS FOR THE CONSTRUCTION OF SANITARY SEWERS DATED JUNE 2, 1965, AND SHALL BE INDICATED ONLY IN THE PRESENCE OF THE COUNTY ENGINEER.
 BEFORE WORK CAN BE STARTED, THE CONTRACTOR MUST OBTAIN A PERMIT TO EXCAVATE IN COUNTY STREETS FROM THE L.A. COUNTY ROAD DEPT., DISTRICT OFFICE NO. 5, AND PAY A FEE TO THE COUNTY ENGINEER, ROOM 234, COUNTY ENGINEERING BUILDING, 125 WEST SECOND STREET OR, ANY T.E.C.O.P.S. WALL, E.Y., REGIONAL OFFICE, SUFFICIENT TO COVER THE COST OF CONSTRUCTION INSPECTION AND RECORD PLANS.
 APPROVAL OF THIS PLAN BY THE COUNTY OF LOS ANGELES DOES NOT CONSTITUTE A REPRESENTATION AS TO THE ACCURACY OF THE LOCATION OR OF THE EXISTENCE OR NON-EXISTENCE OF ANY UNDERGROUND UTILITY PIPE, OR STRUCTURE WITHIN THE LIMITS OF THIS PROJECT. THIS NOTE APPLIES TO ALL PAGES.
 IF WORK IS TO BE DONE IN A STATE HIGHWAY, A PERMIT MUST BE OBTAINED FROM THE STATE OF CALIFORNIA, DIVISION OF HIGHWAYS, 120 SOUTH BRIDGE STREET, LOS ANGELES, CALIFORNIA.
 COUNTY OF LOS ANGELES, CALIFORNIA
 JOHN A. LAMBIE, COUNTY ENGINEER J. D. PARKHURST, CHIEF ENGINEER
 CO. SANITARY DIST. 8
 APPROVED BY: [Signature] 10/15/69 APPROVED BY: [Signature] 10/15/69
 REGIONAL ENGINEER DATE OFFICE ENGINEER
 CHECKED BY: [Signature] 10/15/69
 REGIONAL ENGINEER DATE
 REG. C. E. NO. 14742
 41595



COLLECT CHARGES AS INDICATED

41597

