

REVIEWED *Point of Person 4-14-70*
 DATE

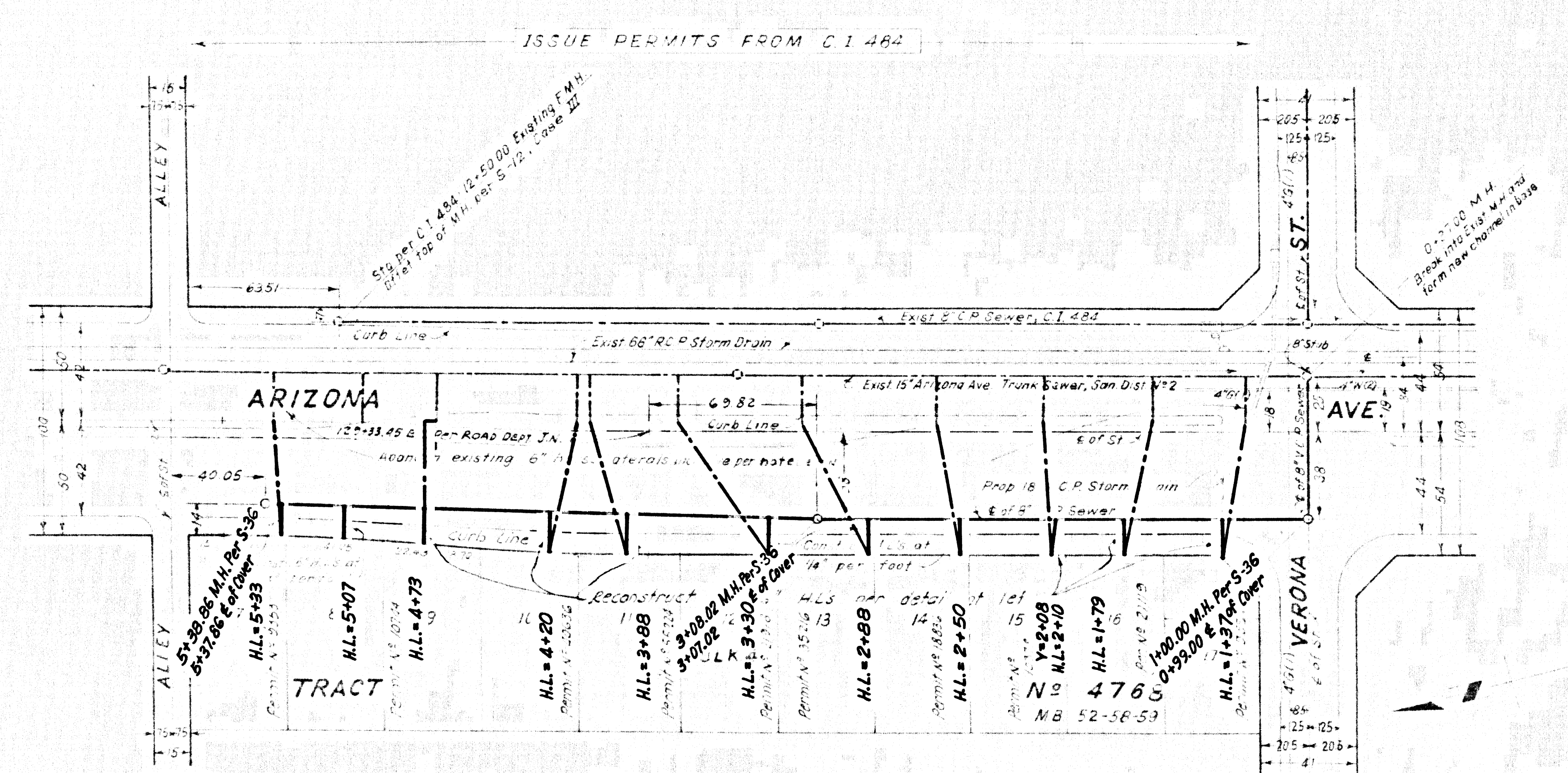
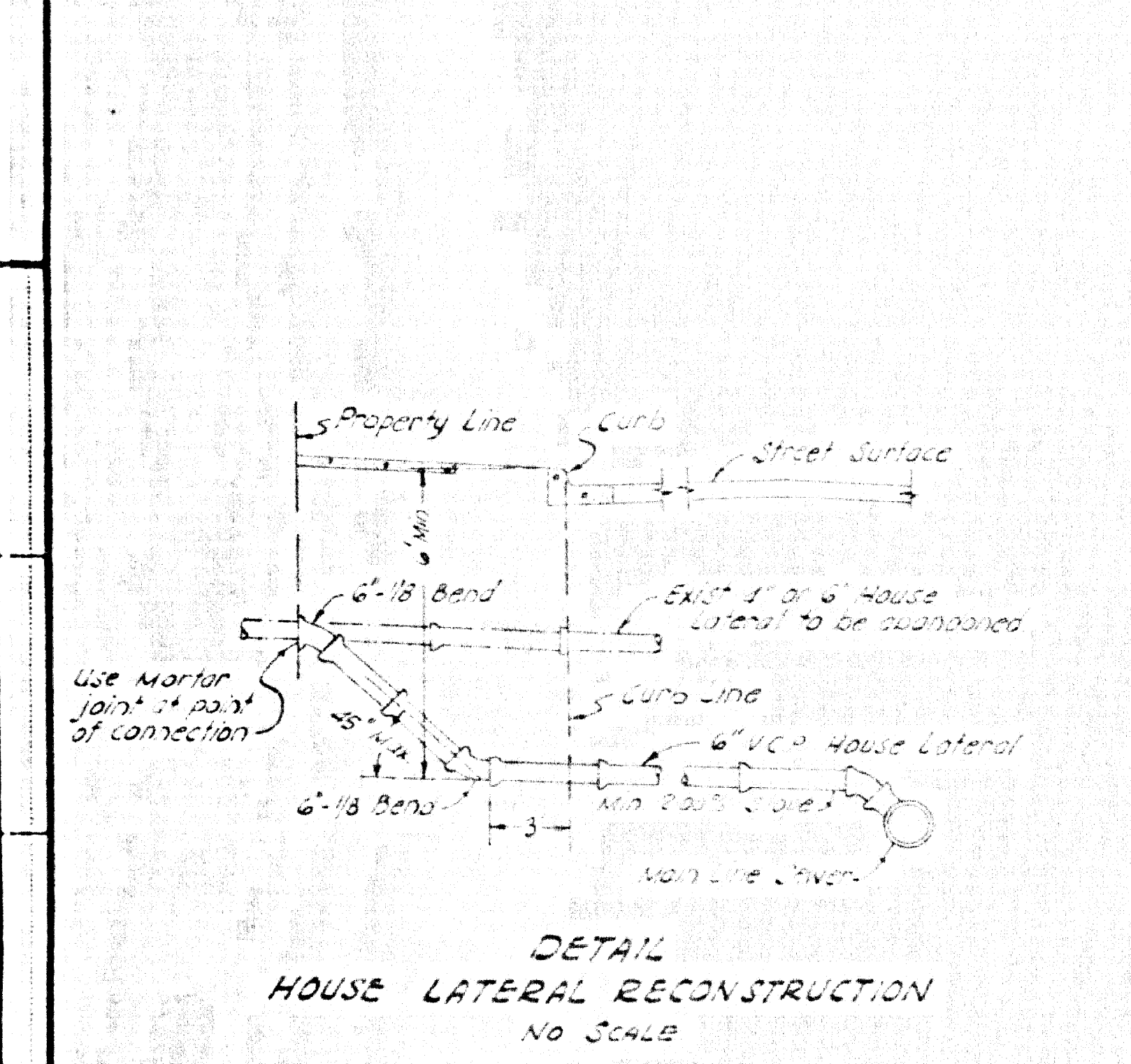
C.C. Ref. No 8338 J.N. 0778.79
GENERAL SEWER NOTES

1. WORK SHALL BE CONSTRUCTED ACCORDING TO THE STANDARD SPECIFICATIONS FOR PUBLIC WORKS CONSTRUCTION (1970 EDITION WITH 1971 SUPPLEMENT) AND COUNTY ENGINEER SPECIFIC REQUIREMENTS FOR CONSTRUCTION OF SANITARY SEWERS DATED APRIL 11, 1970 AND SHALL BE PROSECUTED ONLY IN THE PRESENCE OF THE COUNTY ENGINEER.
2. Use extra strength vitrified clay pipe. All pipe in standard depth, except as noted.
3. Vitrified clay pipe joints shall be Type "D", "H" or "M", per Section 208-2 of Standard Specifications.
4. "T" or "Y" branches may be used for connection to main line sewers, except as noted.
5. Refer to Section 7-10.4 of the Standard Specifications regarding safety orders.
6. The Contractor shall notify the Construction Division of the County Engineer by telephone 629-4747, Ext. 8155, at least 24 hours before starting any work under this contract.
7. The following latest revised Standard Plans shall apply in the construction of this project S-1, S-2, S-3, S-4, S-5, S-6, S-7, S-8, S-9, S-10, S-11, S-12, S-13, S-14, S-15, S-16, S-17, S-18, S-19, S-20, S-21, S-22, S-23, S-24, S-25, S-26, S-27, S-28, S-29, S-30, S-31, S-32, S-33, S-34, S-35, S-36, S-37, S-38, S-39, S-40, S-41, S-42, S-43, S-44, S-45, S-46, S-47, S-48, S-49, S-50, S-51, S-52, S-53, S-54, S-55, S-56, S-57, S-58, S-59, S-60, S-61, S-62, S-63, S-64, S-65, S-66, S-67, S-68, S-69, S-70, S-71, S-72, S-73, S-74, S-75, S-76, S-77, S-78, S-79, S-80, S-81, S-82, S-83, S-84, S-85, S-86, S-87, S-88, S-89, S-90, S-91, S-92, S-93, S-94, S-95, S-96, S-97, S-98, S-99, S-100.
8. Contractor shall maintain sewer service at all times during construction of Main Line Sewer and House Lateral Sewers.
9. All structures shall be brick or precast in place per S-1 or S-35.
10. NO REVISIONS SHALL BE MADE TO THESE PLANS WITHOUT THE APPROVAL OF THE COUNTY ENGINEER.
11. SEWER PIPE AND APPURTENANCES SHALL BE ANNOTATED ACCORDING WITH SECTION 306-3 OF STD SPECS.
12. FOR LEGEND SEE STANDARD PLAN S-1.
13. USE LOCKING MANHOLE FRAMES AND COVERS PER S-35.
14. APPROVAL OF THIS PLAN BY THE COUNTY OF L.A. DOES NOT CONSTITUTE A REPRESENTATION AS TO THE ACCURACY OF THE LOCATION OR DEPTH OF ANY EXISTING OR PROPOSED UTILITY PIPE OR STRUCTURE WITHIN THE LIMITS OF THIS PROJECT.

B.M. B.M. ELEV. 187.45
 B.M. in S. Ch. Verona St. 118' S. & 1285
 1/2 Kern Ave. Opp. P.P. Mad. "B.M."
 RIVERA QUAD. 19

THE FOLLOWING LATEST REVISED STANDARD PLANS ON FILE IN THE OFFICE OF COUNTY ENGINEER SHALL APPLY IN THE CONSTRUCTION OF THIS PROJECT

LEGEND	S-1
MAN PUBLIC SPECS REQUIREMENTS	S-2
BRICK MANHOLE	S-3
RECONSTRUCTION OF BRICK M.H. TOPS	S-17
MANHOLE STEP	S-17
BEDDING FOR SEWER PIPE	S-21
SPECIAL SUPPORT AND PROTECTION	S-22
BRACKING AND ENGAGEMENT	S-23
STANDARD WYE OR THE EQUIVALENT	S-24
ALLOWABLE TRENCH WIDTH	S-25
LOCKING M.H. FRAME AND COVER	S-35
NON-REIN. PRECAST CONC. M.H.	S-36



NO CHARGE FOR CONNECTIONS

Included in this contract is 700' linear feet of 6" dia. House Lateral construction which is not shown on this plan. Refer to project specifications.

No connections for the disposal of industrial wastes shall be made to sewers shown on these drawings without written permission from the Chief Engineer and General Manager of the County Sanitation Districts.

44059 ROAD DEPARTMENT
 CASH CONTRACT
 No 4112

PROFILE, GRADE, AND ALIGNMENT OF
 SANITARY SEWER
 TO BE CONSTRUCTED IN
 ARIZONA AVENUE
 COUNTY OF LOS ANGELES

DESIGNED BY *John A. Lambie*
 COUNTY ENGINEER

APPROVED BY *John D. Parkhurst*
 COUNTY ENGINEER

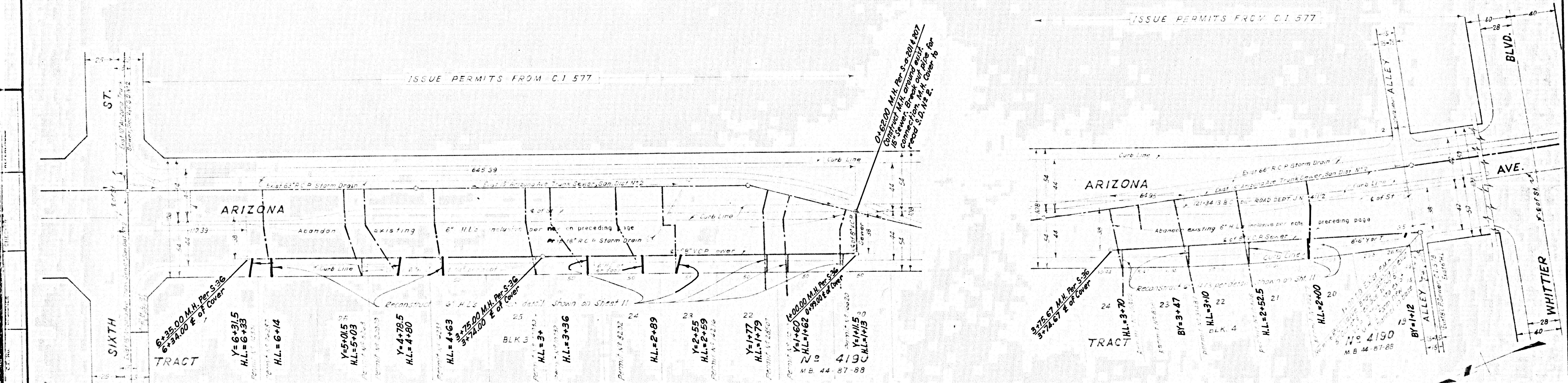
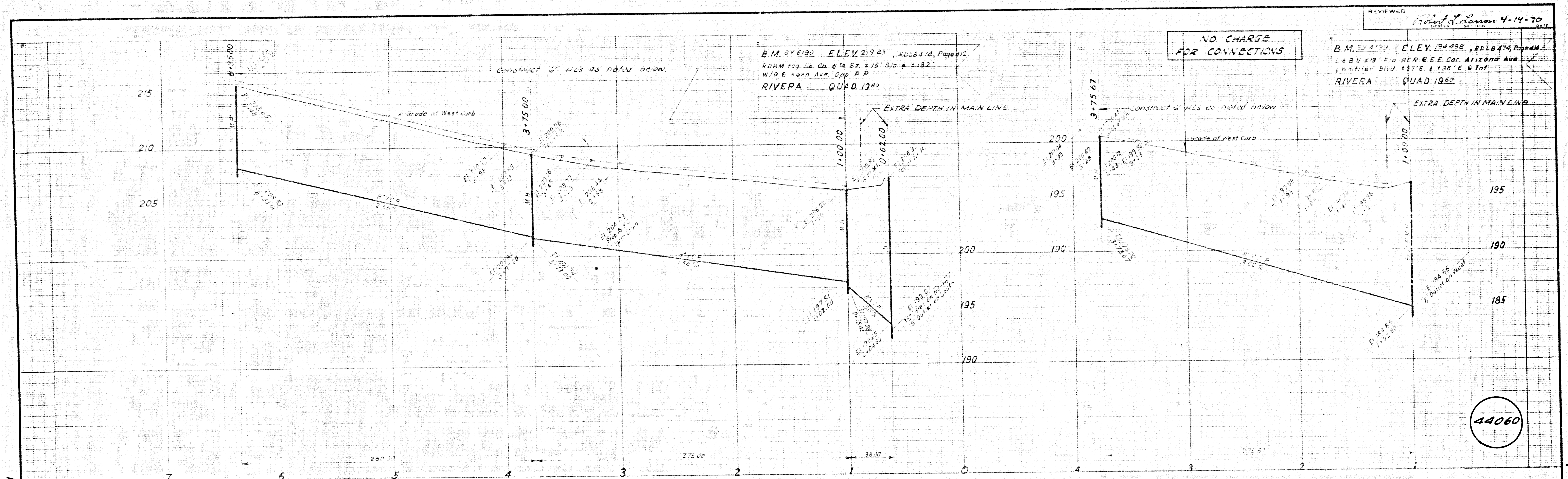
The 6" horizontal shall be indicated by 6 using a couple in a cell of the house connection not closer than 5' to the outside edge of the excavation for the new sewer. A concrete thrust block with min. length of 12' and keyed into the sides of the excavation shall be provided to retain the blocks.

No work shall occur on Trunk House laterals during periods when Trunk Sewer is surcharged.

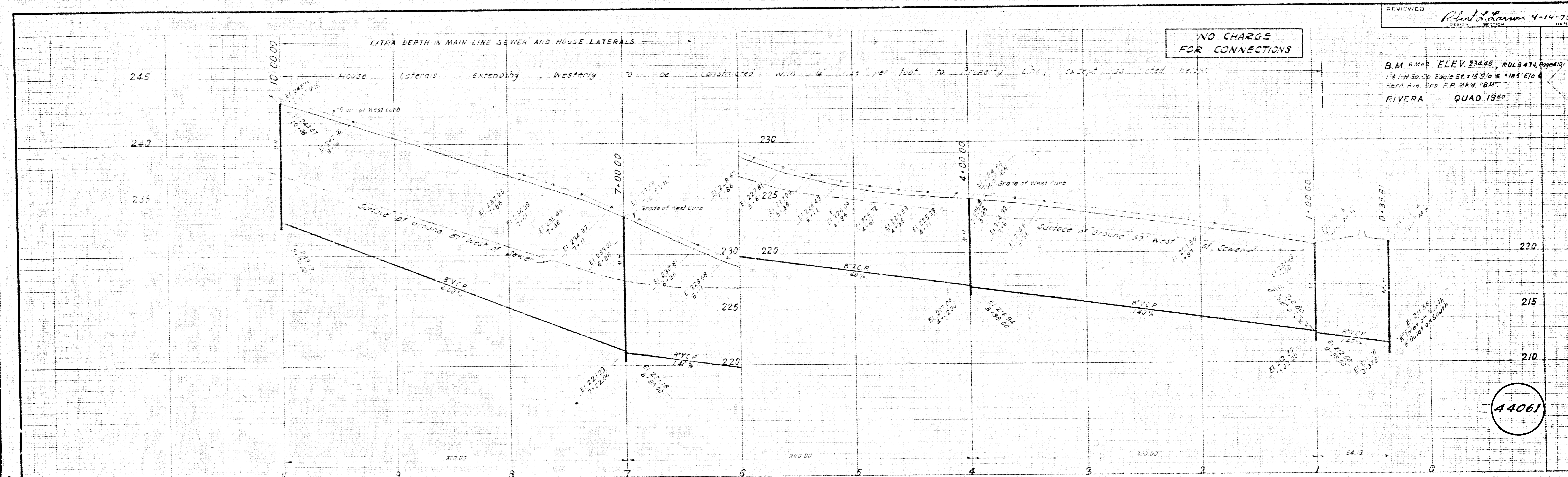
Underground Utility Companies List
 (1) Southern California Gas Co.
 (2) California Water Service
 (3) Southern California Edison Co.
 (4) Pacific Telephone Co.

LOS ANGELES COUNTY ROAD DEPARTMENT
 HIGHWAY DIVISION
 JOB NAME: ARIZONA AVENUE
 LIMITS EAST ST. TO VERONA ST.

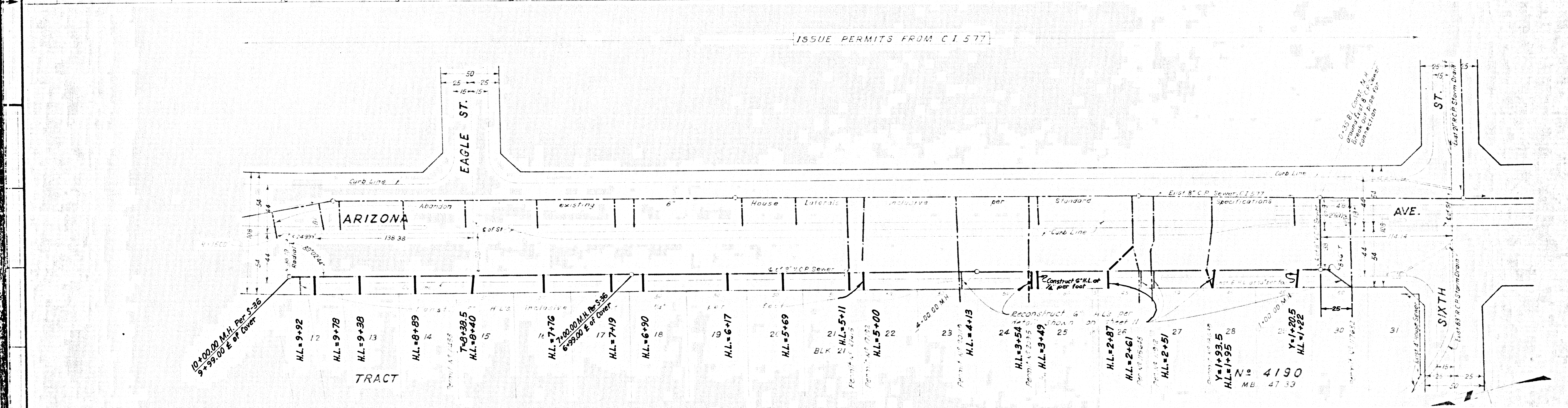
DATE BY: _____
 REVISIONS: _____
 SCALE: HORIZ. 1"=40'-0" VERT. 1"=10'-0"
 JOB NO. 4112
 SHEET 11 OF 11 SHTS. (2546 E-12)



LOS ANGELES COUNTY ROAD DEPARTMENT			
HIGHWAY	JOB NAME	ARIZONA AVENUE	
DIVISION	LIMITS	EAGLE ST TO VERONA ST.	
DATE	JOB NO.	4112	SHEET 2 OF 5
REVISIONS	SCALE	HORIZ.	VERT.
			(2546 E-12)



REVIEWED *Plan 4-14-70*
 B.M. BM#2 ELEV. 236.48, RDLB 474, Page 419
 1/4 S. N. 30. 00 E. Eagle St. 153.0 & 118.5' E to
 near Ave. Top P.P. 449 'BM'
 RIVERA QUAD. 1960



LOS ANGELES COUNTY ROAD DEPARTMENT	
HIGHWAY	JOB NAME ARIZONA AVENUE
DIVISION	LIMITS EAGLE ST. TO VERONA ST.
DATE	BY
REVISIONS	SCALE HORIZ. VERT.
JOHN NO.	4112
SHEET 13 OF SHTS.	(2546E-12)