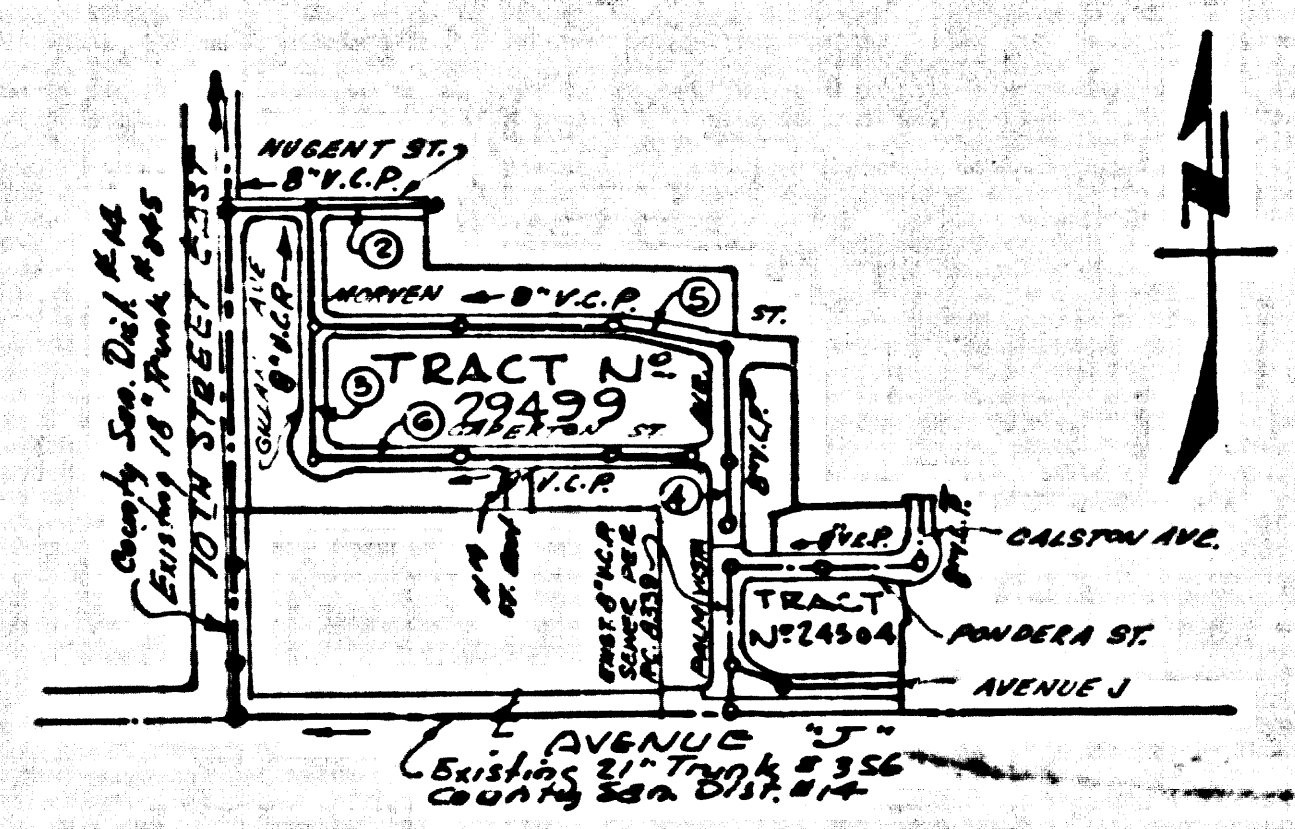


B.M. B.L. No. 63 ELEV. 2397.770
 L & T. N.P. M.C.R. @ S.W. COR. 10TH
 ST. EAST & AVE. J. 48' WEST 345'
 SOUTH OF 1/2 INTERSECTION
 LANCASTER QUAD. 1965



INDEX MAP
 SCALE: 1" = 600'
 P.C. 8341
 TRACT No. 29499

No connection for the drainage of
 industrial wastes shall be made to
 sewers shown on these drawings.
 If such wastes are to be disposed of
 the Chief Engineer and General Manager
 of the County Sanitation District
 shall be notified in writing.
 County Sanitation District shall be
 notified prior to the following so
 that required inspection can be made.
 (Phone 625-1000 or 625-8075)
 Breaking into existing manhole or
 structure from ground.
 Accepted as the project.

LANCASTER BLDG. DIST. NO. 8

- NOTE:
- HOUSE LATERALS TO BE CONSTRUCTED WITH INVERTS AT PROPERTY LINE 4 FEET BELOW CURB GRADE.
 - PROVIDE STAKES ON THE PROPERTY LINE OR PROTECT LINES PRODUCED AT RIGHT ANGLES TO THE SEWER LINE AT THE CENTER LINE OF EACH MANHOLE.
 - NO REPRESENTATIVE OF THE COUNTY ENGINEER WILL SURVEY OR LAY OUT ANY PORTION OF THE WORK.
 - THE PRIVATE ENGINEER SHALL FURNISH THE COUNTY ENGINEER WITH GRADE SHEETS AND STATIONING FOR ALL HOUSE LATERALS AND "T" OR "T" BRANCHES AND SHALL PROVIDE STAKES FOR THESE AT THEIR PROPER LOCATIONS WITH STATIONING PLAINLY MARKED. ALL HOUSE LATERALS SHALL BE CONSTRUCTED IN A STRAIGHT ALIGNMENT AT RIGHT ANGLES FROM THE MAIN LINE SEWER EXCEPT AS SHOWN ON THE PLANS. HOUSE LATERALS FROM CHIMNEYS SHALL NOT HAVE AN ANGLE OF LESS THAN 45° WITH THE MAIN LINE SEWER. ANY CHANGE IN ALIGNMENT SHALL BE REQUESTED BY WRITING BY THE PRIVATE ENGINEER.
 - THE PRIVATE ENGINEER SHALL FURNISH THE HOUSE LATERAL DEPTH AT THE PROPERTY LINE BELOW THE TOP OF CURB ELEVATION FOR EACH HOUSE LATERAL ON THE GRADE SHEET.
 - NO REVISIONS SHALL BE MADE IN THESE PLANS WITHOUT THE APPROVAL OF THE COUNTY ENGINEER.
 - THE CONTRACTOR SHALL NOTIFY THE CONSTRUCTION DIVISION BY TELEPHONE, MADISON 9-047, EXT. 8158, AT LEAST TWENTY-FOUR HOURS BEFORE STARTING ANY WORK UNDER THE CONTRACT.
 - ALL STRUCTURES SHALL BE EITHER BRICK MANHOLES PER 8-3 OR PRECAST CONCRETE MANHOLES PER 8-3 OR 8-4.
 - "T" OR "T" BRANCHES MAY BE USED FOR CONNECTIONS TO MAINLINE SEWERS.
 - MANHOLE TOPS IN UNIMPROVED RIGHTS OF WAY TO BE SIX INCHES ABOVE FINISHED GRADE.
 - USE EXTRA STRENGTH PIPE. ALL PIPE IS STANDARD DEPTH EXCEPT AS NOTED.
 - WITTING CLAY PIPE JOINTS SHALL BE TYPE "B", "C", OR "D" PER STANDARD SPECIFICATIONS SECTION 288-2.
 - IF A POWER POLE IS WITHIN THREE FEET OF THE SEWER, THE SEWER SHALL BE ENCASED, PER 8-23, TWO FEET ON EACH SIDE FROM THE POINT OF INTERFERENCE.
 - RESECURE ALL TRENCHES WITHIN PAVED AREAS TO MEET L.A. COUNTY ROAD DEPT. OR CALIFORNIA STATE HIGHWAY REQUIREMENTS IN ACCORDANCE WITH PERMITS.
 - SEWERS TO BE TESTED FOR LEAKAGE PER SECTION 288-2.2.7 OF THE STANDARD SPECIFICATIONS.
 - PER 8-23 SECTION 288-2.1 OF THE STANDARD SPECIFICATIONS, RECLAIMING SAFETY CHAINS.
 - ALL JOINTS BETWEEN CAST IRON PIPE AND WITTING CLAY PIPE SHALL BE MADE WITH A RUBBER SLAVE JOINT, TYPE "C" OR "D", WITHIN FINISHING IF NECESSARY PER STANDARD SPECIFICATIONS, SECTION 288-2.
- THE FOLLOWING LATEST REVISED STANDARD PLANS ON FILE IN THE OFFICE OF THE COUNTY ENGINEER SHALL APPLY IN THE CONSTRUCTION OF THIS PROJECT:

LEADER	8-1
MINIMUM PUBLIC SAFETY REQUIREMENTS	8-2
BRICK MANHOLE	8-3
NON-REINFORCED PRECAST CONCRETE MANHOLE	8-4
REINFORCED PRECAST CONCRETE MANHOLE	8-5
MANHOLE BRAM AND COVER	8-6
STANDARD MANHOLE STEP	8-7
BRIDGING FOR SEWER PIPE	8-8
CHANGING AND ENCASING	8-9
WYE OR TEE SUPPORT	8-10
ALLOWABLE TRENCH WIDTHS	8-11

PROFILE, ALIGNMENT AND GRADE OF
 SANITARY SEWERS P.C. 8341
 CONSTRUCTED IN PAGE 1

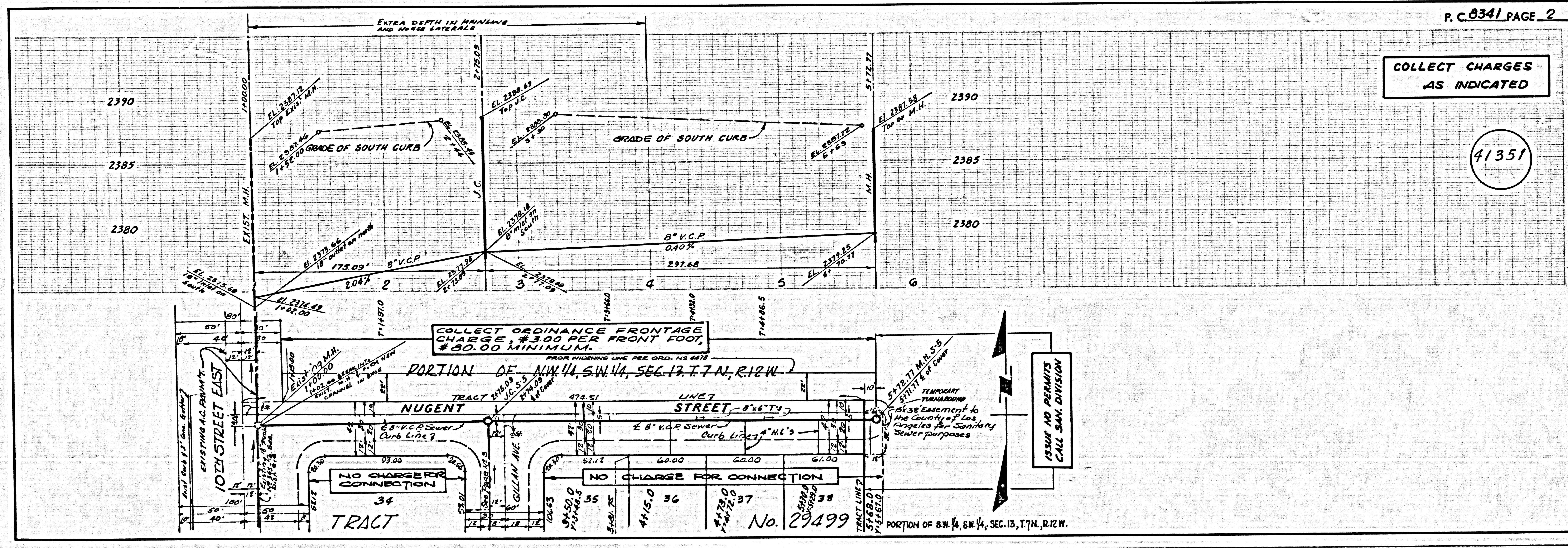
TRACT No. 29499
 PRIVATE CONTRACT NO. 8341

W.S. 70
 3 SHEETS; 6 PAGES
 SCALE: VERT. 1" = 4' SEPTEMBER, 1969
 HORIZ. 1" = 40'
 PREPARED IN THE OFFICES OF
 CONSOLIDATED ENGINEERING CO.
 8845 W. OLYMPIC BLVD.
 BEVERLY HILLS, CALIF. 90211
 BY: *Consolidated Engineering Co.*
 REG. C. E. NO. 10915

NOTE:
 GRADES TO WHICH THIS IMPROVEMENT IS TO BE CONSTRUCTED ARE SHOWN ON PLANS AND PROFILE. GRADE POINTS FOR TOP OF CURB, CENTER LINE OF STREETS, OR CENTER LINE OF ALLEYS ARE SHOWN BY CIRCLES ON PROFILES. AT ALL POINTS BETWEEN DESIGNATED POINTS THE GRADE SHALL BE ESTABLISHED SO AS TO CONFORM TO A STRAIGHT LINE BETWEEN SAID DESIGNATED POINTS. ELEVATIONS ARE IN FEET ABOVE U.S.C. & G.S. SEA LEVEL, BATHY OF 1929.
 WORK SHALL BE CONSTRUCTED ACCORDING TO THE STANDARD SPECIFICATIONS FOR PUBLIC WORKS CONSTRUCTION AND SPECIAL PROVISIONS FOR THE CONSTRUCTION OF SANITARY SEWERS DATED JAN. 2, 1969 AS REVISED, AND SHALL BE PROSECUTED ONLY IN THE PRESENCE OF THE COUNTY ENGINEER.
 BEFORE WORK CAN BE STARTED, THE CONTRACTOR MUST OBTAIN A PERMIT TO EXCAVATE IN COUNTY STREETS FROM THE L. A. COUNTY ROAD DEPT., DISTRICT OFFICE NO. 5, AND PAY A FEE TO THE COUNTY ENGINEER, ROOM 338, COUNTY ENGINEERING BUILDING, 188 WEST SECOND STREET, MONTGOMERY VALLEY, REGIONAL OFFICE, SUFFICIENT TO COVER THE COST OF CONSTRUCTION INSPECTION AND RECORD PLANS.
 APPROVAL OF THIS PLAN BY THE COUNTY OF LOS ANGELES DOES NOT CONSTITUTE A REPRESENTATION AS TO THE ACCURACY OF THE LOCATION OF OR THE EXISTENCE OR NON-EXISTENCE OF ANY UNDERGROUND UTILITY PIPE, OR STRUCTURE WITHIN THE LIMITS OF THIS PROJECT. THIS NOTE APPLIES TO ALL PAGES.
 IF WORK IS TO BE DONE BY A STATE HIGHWAY, A PERMIT MUST BE OBTAINED FROM THE STATE OF CALIFORNIA, DIVISION OF HIGHWAYS, 130 SOUTH SPRING STREET, LOS ANGELES, CALIFORNIA.
 COUNTY OF LOS ANGELES, CALIFORNIA
 JOHN A. LAMBIE, COUNTY ENGINEER J. D. PARKHURST, CHIEF ENGINEER
 CO. 141 3111
 APPROVED BY: *J. D. Parkhurst* 9/18/69 DATE: APPROVED BY: *J. D. Parkhurst*
 REGIONAL ENGINEER DATE: OFFICE ENGINEER
 CHECKED BY: *Richard J. Hopkins* 9/16/69
 REG. C.E. NO. 16746

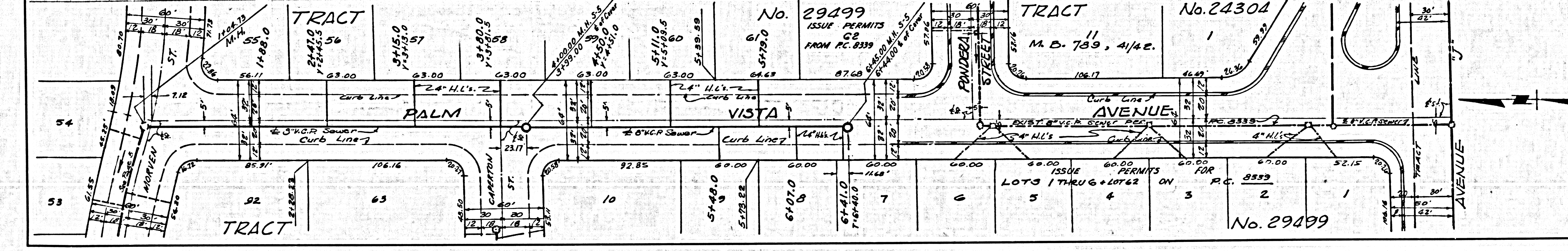
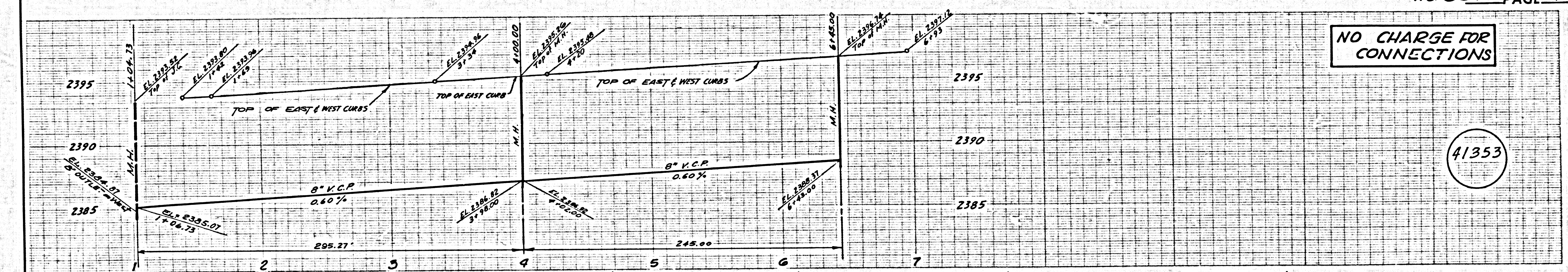
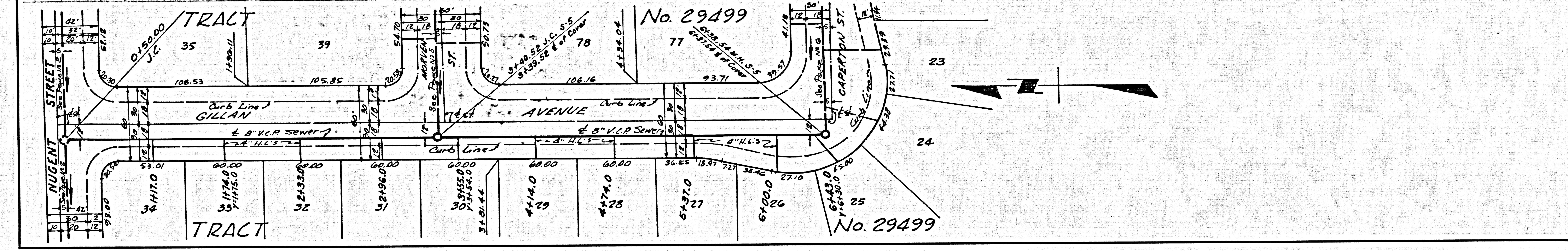
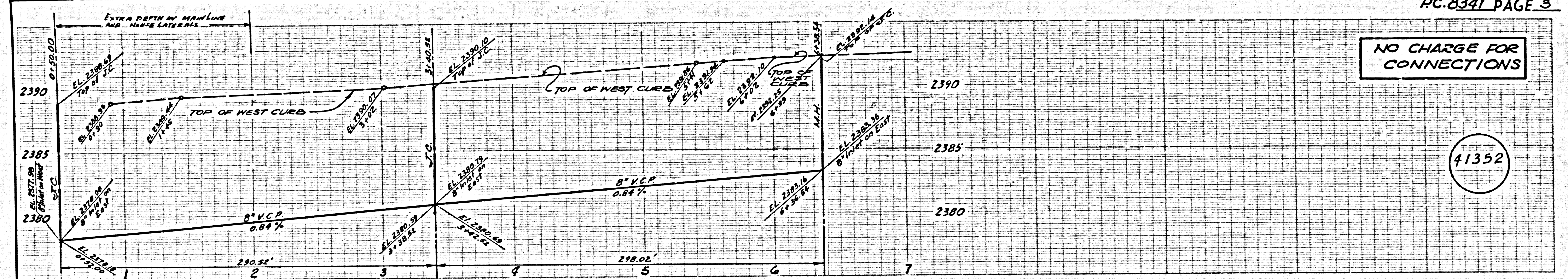
COLLECT CHARGES
 AS INDICATED

J. N. 0250.02

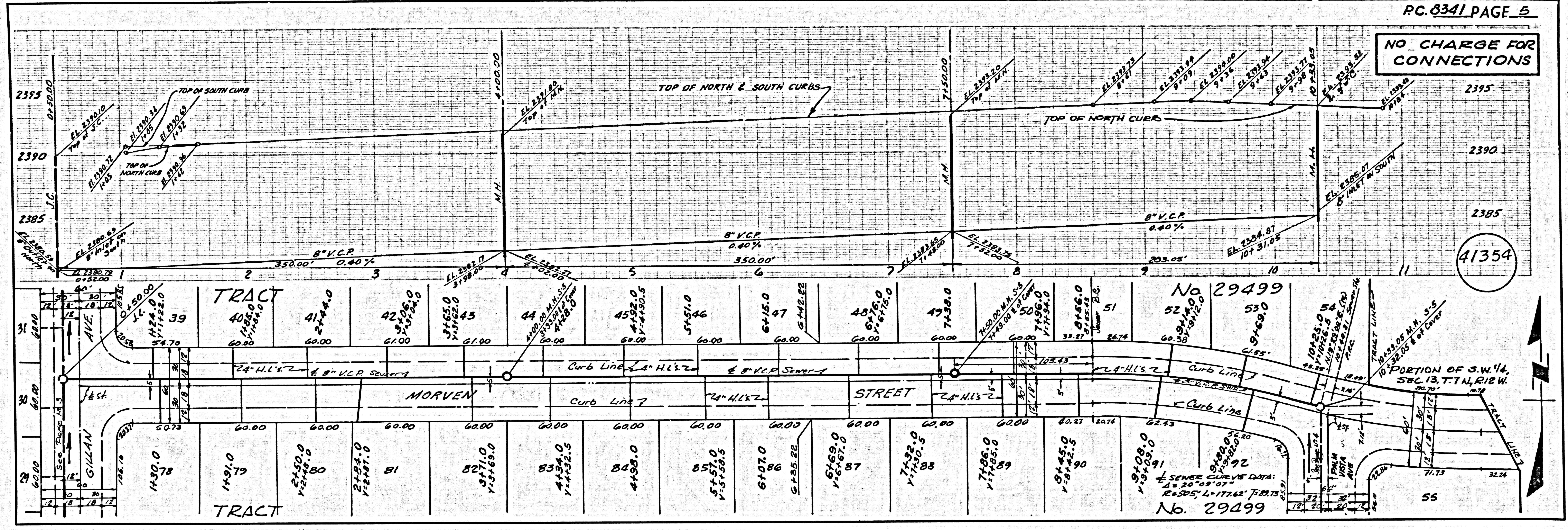


COLLECT CHARGES
 AS INDICATED

41351



NO CHARGE FOR CONNECTIONS



NO CHARGE FOR CONNECTIONS

