

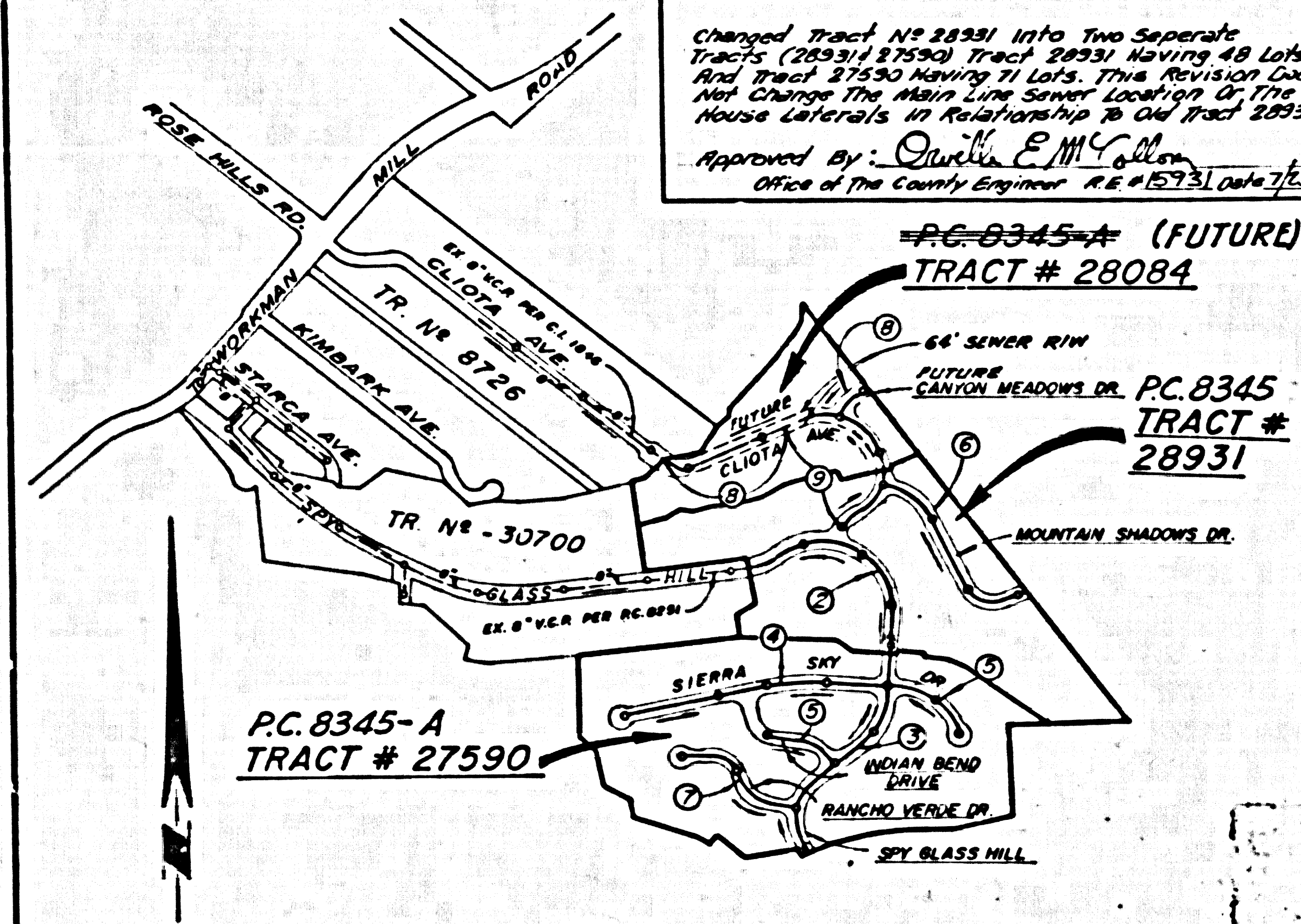
B.M. BY 6678 ELEV. 275.632
 BOYD S.W. 4' LEAD 24' W/O E END OF
 CURVE MEASURING TO CENTER OF STR. 120'
 TO C.G. 1/2 MILES S.W. 1/2 CORNER WITH
 ED. ON N.W. SIDE OF HARTMAN HILL ED.
 WHITTIER QUAD. 1923 ADJ.

"REVISION - D"
 SEE PAGE 9
 DATE 8-8-78

"REVISION - A"
 Note 1 - Added 6.8' Y House Lateral East of Manhole
 8 Station 1+61.74 on Canyon Meadows Drive.
 Note 2 - Revised Total No of Lots from 126 to 125. 1 Lot
 was dropped around the new Streets, Indian Bend Drive
 Mountain Shadows Drive and Rancho Verde Drive
 APPROVED BY: *Orville E. McColl*
 Office of the County Engineer R.E. #1593 Date 3/23/70

"REVISION - C"
 Changed Tract No 28931 into Two Separate
 Tracts (28931 & 27590) Having 48 Lots
 and Tract 27590 Having 71 Lots. This Revision Does
 Not Change The Main Line Sewer Location Or The
 House Laterals in Relationship To the Tract 28931
 APPROVED BY: *Orville E. McColl*
 Office of the County Engineer R.E. #1593 Date 7/23/70

"REVISION - B"
 Changed Tract No 28931 into Two Separate Tracts
 (28931 & 27590) Having 19 Lots and
 Tract 28084 Having 14 Total Lots. This Revision Does
 Not Change The Main Line Sewer Location or The House
 Laterals in Relationship To the Tract 28931.
 APPROVED BY: *Orville E. McColl*
 Office of the County Engineer R.E. #1593 Date 8/29/70



VICINITY & SHEET INDEX MAP
 SCALE 1" = 600'

PC-8345-A (FUTURE)
 TRACT # 28084
 PC-8345
 TRACT # 28931
 PC-8345-A
 TRACT # 27590

County Sanitation Districts shall be notified prior to the following so that required inspection can be made: (Phone 587-1028 - 440-0771)

Acceptance of the project.

Lots 8-11 inclusive of Tr. 28931 are to be served from Proposed P.C. 8345, Page 9.

DOUBLE SCALE VERTICAL
 WHITTIER BLDG. DIST. NO. 11

- NOTES:
- PROVIDE STAKES ON THE PROPERTY LINE OR PROPERTY LINES PRODUCED AT RIGHT ANGLES TO THE SEWER LINE AT THE CENTER LINE OF EACH MANHOLE.
 - NO REPRESENTATIVE OF THE COUNTY ENGINEER WILL SURVEY OR LAY OUT ANY PORTION OF THE WORK.
 - THE PRIVATE ENGINEER SHALL FURNISH THE COUNTY ENGINEER WITH GRADE SHEETS AND STAKING FOR ALL HOUSE LATERALS. 7" DIA. BRANCHES AND SMALL PITCH STAKES FOR THEM AT THEIR PROPOSED LOCATIONS WITH STATIONING PLAINLY MARKED. ALL HOUSE LATERALS SHALL BE CONSTRUCTED IN A STRAIGHT ALIGNMENT AT RIGHT ANGLES FROM THE MAIN LINE SEWER EXCEPT AS SHOWN ON THE PLANS. HOUSE LATERALS FROM CHIMNEYS SHALL NOT HAVE AN ANGLE OF LESS THAN 45° WITH THE MAIN LINE SEWER. ANY CHANGE IN ALIGNMENT SHALL BE REQUESTED BY WRITING BY THE PRIVATE ENGINEER.
 - THE PRIVATE ENGINEER SHALL FURNISH THE HOUSE LATERAL SEWER AT THE PROPERTY LINE SHOW THE TOP OF CURB ELEVATION FOR EACH HOUSE LATERAL ON THE GRADE SHEET.
 - NO REVISIONS SHALL BE MADE IN THESE PLANS WITHOUT THE APPROVAL OF THE COUNTY ENGINEER.
 - THE CONTRACTOR SHALL NOTIFY THE CONSTRUCTION DIVISION BY TELEPHONE, MARSHON 9-27, EXT. 8185, AT LEAST TWENTY-FOUR HOURS BEFORE STARTING ANY WORK UNDER THIS CONTRACT.
 - MANHOLES SHALL BE NON-REINFORCED PRECAST CONCRETE MANHOLES PER S-2 OR S-4 UNLESS OTHERWISE SPECIFIED.
 - USE STANDARD MANHOLE FRAMES AND COVERS, S-16, EXCEPT AS NOTED.
 - MANHOLE TOPS TO BE AT FINISHED GRADE.
 - USE EXTRA STRENGTH PIPE ALL PIPE IS STANDARD DEPTH EXCEPT AS NOTED.
 - VERTIFIED CLAY PIPE JOINTS SHALL BE TYPE "D", "T", OR "B" PER STD. SPECIFICATIONS SECTION 806-2.
 - IF A POWER POLE IS WITHIN THREE FEET OF THE SEWER, THE SEWER SHALL BE ENCASED, PER S-25, TWO FEET ON EACH SIDE FROM THE POINT OF INTERFERENCE.
 - IF DURING THE COURSE OF CONSTRUCTION IT IS DETERMINED THAT THERE IS LESS THAN FOUR FEET OF COVER OVER THE TOP OF A MAIN LINE OR HOUSE LATERAL V.C.P. SEWER WHICH IS NOT INDICATED ON THE PLANS, THE PIPE SHALL BE ENCASED PER S-25, UNLESS OTHERWISE APPROVED BY THE COUNTY ENGINEER.
 - HOUSE LATERALS TO BE CONSTRUCTED WITH INVERTS AT PROPERTY LINE 6 FEET BELOW CURB GRADE EXCEPT AS NOTED.
 - RESURFACE ALL TRENCHES WITHIN PAVED AREAS TO MEET L.A. COUNTY ROAD DEPT. OR CALIFORNIA STATE HIGHWAY REQUIREMENTS IN ACCORDANCE WITH PERMITS.
 - SEWERS TO BE TESTED FOR LEAKAGE PER SECTION 806-2.3.7 OF THE STANDARD SPECIFICATIONS.
 - REFER TO SECTION 1-2.1.1 OF THE STANDARD SPECIFICATIONS, STANDARD SAFETY ORDERS.

PC-8345-A TRACT NO. 27590
 PC-8345 TRACT NO. 28931
 PC-8345-A TRACT NO. 28084
 PRIVATE CONTRACT NO. 8345
 W.S. 37
 5 SHEETS, 9 PAGES
 SCALE: 1" = 8' HORIZ. 1" = 4' VERT.
 NOV 4, 1969
 PREPARED IN THE OFFICES OF
 WILLDA ENGINEERING ASSOC.
 125 So. Clarendon St. Anaheim, Calif.
 BY: *Don H. Reed*
 REG. C. E. NO. 12588

FOR LEGEND SEE PLAN NO. S-1

NOTES:
 GRADES TO WHICH THE IMPROVEMENT IS TO BE CONSTRUCTED ARE SHOWN ON PLANS AND PROFILES. GRADE POINTS FOR TOP OF CURB, COVER LINE OF STREET, OR COVER LINE OF ALLEY ARE SHOWN BY CIRCLES ON PROFILES. AT ALL POINTS BETWEEN DESIGNATED POINTS THE GRADE SHALL BE ESTABLISHED SO AS TO CONFORM TO A STRAIGHT LINE DRAWN BETWEEN SAID DESIGNATED POINTS. ELEVATIONS ARE IN FEET ABOVE M.S.L. S.E. 1/4 SEC. 32, T. 11 N., R. 12 E., S. 11 E., ON FILE IN THE OFFICE OF THE COUNTY ENGINEER AND SHALL BE PROTECTED ONLY IN THE PRESENCE OF THE COUNTY ENGINEER.
 BEFORE WORK CAN BE STARTED, THE CONTRACTOR MUST OBTAIN A PERMIT TO EXCAVATE IN COUNTY STREETS FROM THE L.A. COUNTY ROAD DEPT., DISTRICT OFFICE NO. 1, AND PAY A FEE TO THE COUNTY ENGINEER, ROOM 201, COUNTY ENGINEER'S BUILDING, 100 WEST SECOND STREET, LOS ANGELES, CALIFORNIA. THE CONTRACTOR SHALL BE RESPONSIBLE FOR THE COST OF THE CONSTRUCTION INSPECTION AND RECORD PLANS.
 APPROVAL OF THIS PLAN BY THE COUNTY OF LOS ANGELES DOES NOT CONSTITUTE A REPRESENTATION AS TO THE ACCURACY OF THE LOCATION OF OR THE EXISTENCE OR NON-EXISTENCE OF ANY UNDERGROUND UTILITY PIPE, OR STRUCTURE WITHIN THE LIMITS OF THIS PROJECT. THIS NOTE APPLIES TO ALL PAGES.
 IF WORK IS TO BE DONE IN A STATE HIGHWAY, A PERMIT MUST BE OBTAINED FROM THE STATE OF CALIFORNIA, DIVISION OF HIGHWAYS, 120 SOUTH SPANISH STREET, LOS ANGELES, CALIFORNIA.

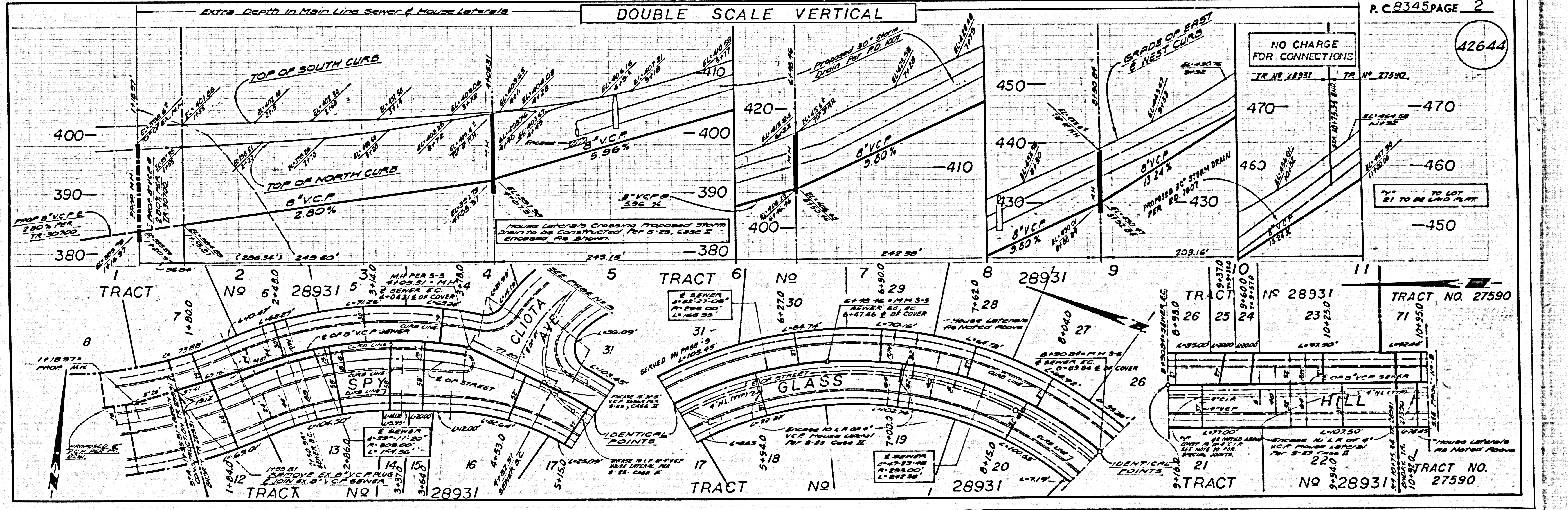
Minimum Public Safety Requirements	S-1
Brick Manhole	S-3
Non-Reinforced Precast Concrete Manhole	S-5
Reinforced Precast Concrete Manhole	S-6
Manhole Frame and Cover	S-13
Standard Manhole Cover	S-17
Bedding For Sewer Pipe	S-21
Grading and Encasement	S-23
Eye or Tee Sights	S-26
Allowable Trench Widths	S-33
Trap M.H. Jase	S-10
Special House Lateral	S-18

No connections for the disposal of industrial wastes shall be made to sewers shown on these drawings without written permission from the Chief Engineer and General Manager of the County Sanitation Districts.

NOTICE TO CONTRACTOR
 The existence and location of any underground utility pipes or structures shown on these plans are obtained by a search of the available records. To the best of my knowledge there are no existing utilities except as shown on these plans. The contractor is required to take due precautionary measures to protect the utility lines shown and any other lines not shown on these plans.
Donald D. Seal
 REG. C.E. NO. 12588

COLLECT CHARGES AS INDICATED

COUNTY OF LOS ANGELES, CALIFORNIA
 JOHN A. LAMBIE, COUNTY ENGINEER
 I. D. PARKHURST, CHIEF ENGINEER
 APPROVED BY: *John A. Lambie* REGIONAL ENGINEER
 APPROVED BY: *I. D. Parkhurst* CHIEF ENGINEER
 CHECKED BY: *Orville E. McColl* 10/24/69
 REG. C.E. NO. 15731
 J.N. 0259 02

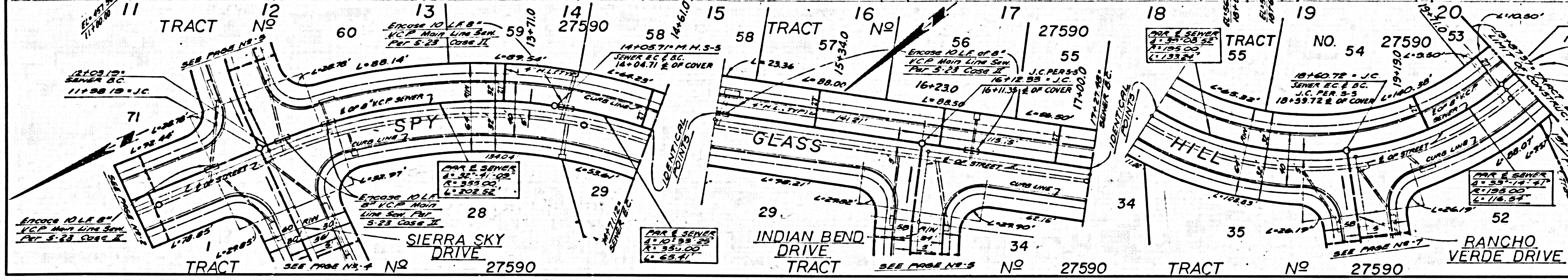
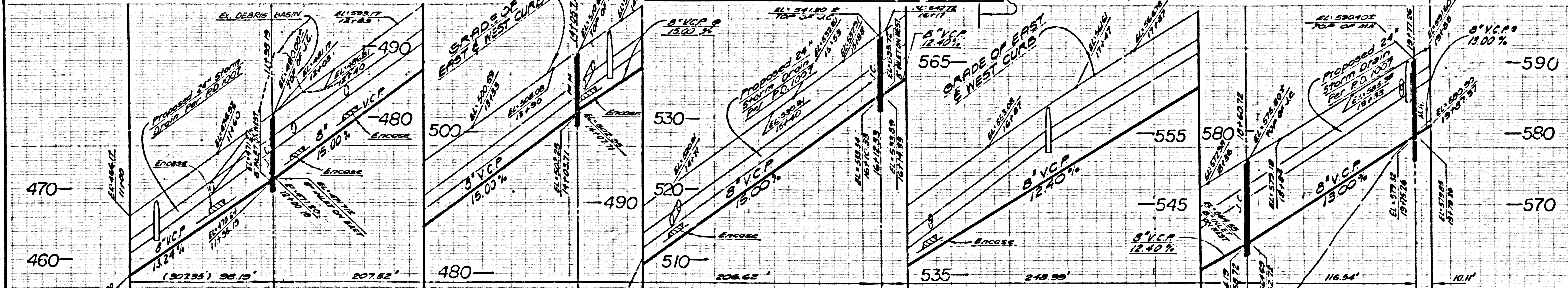


DOUBLE SCALE VERTICAL

Extra Depth in Main Line Sewer & House Laterals

NO CHARGE FOR CONNECTIONS

42645

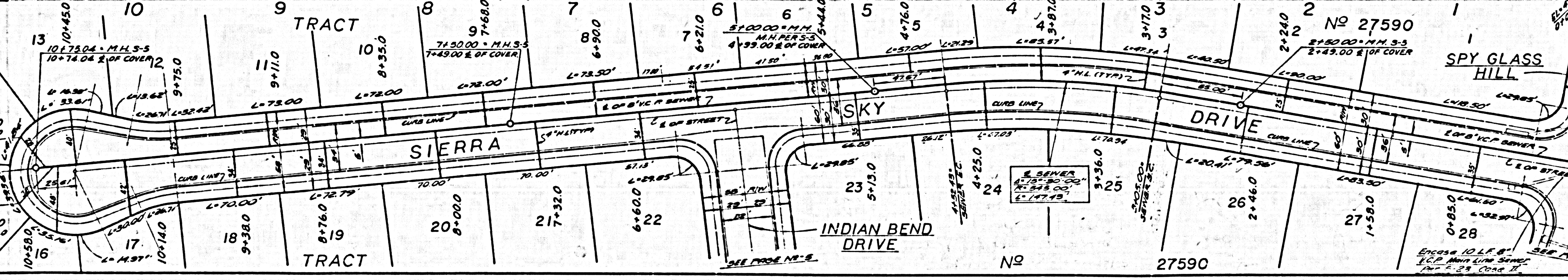
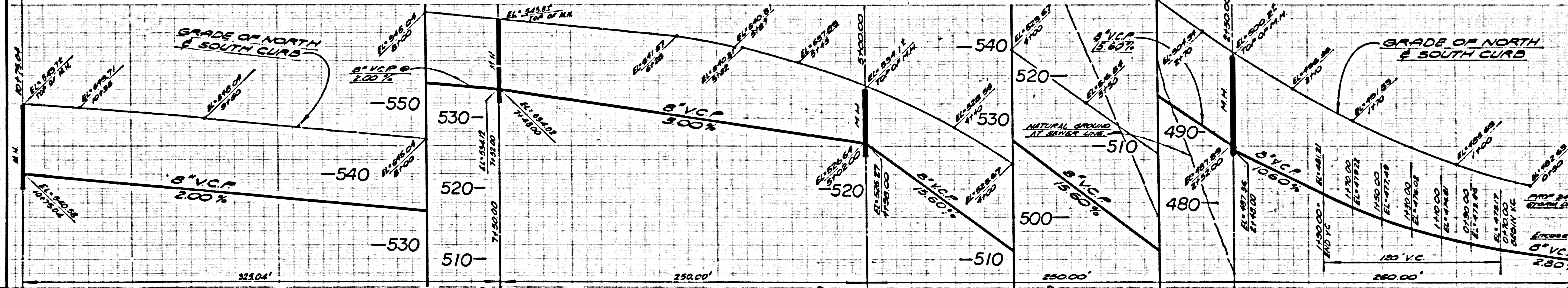


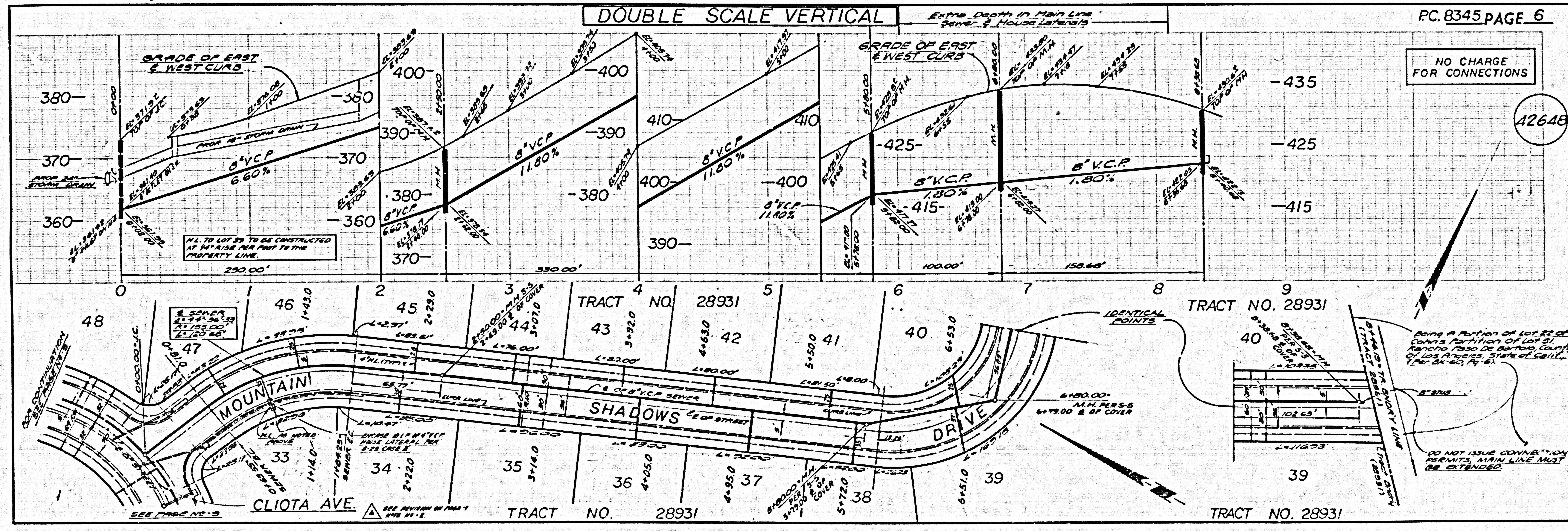
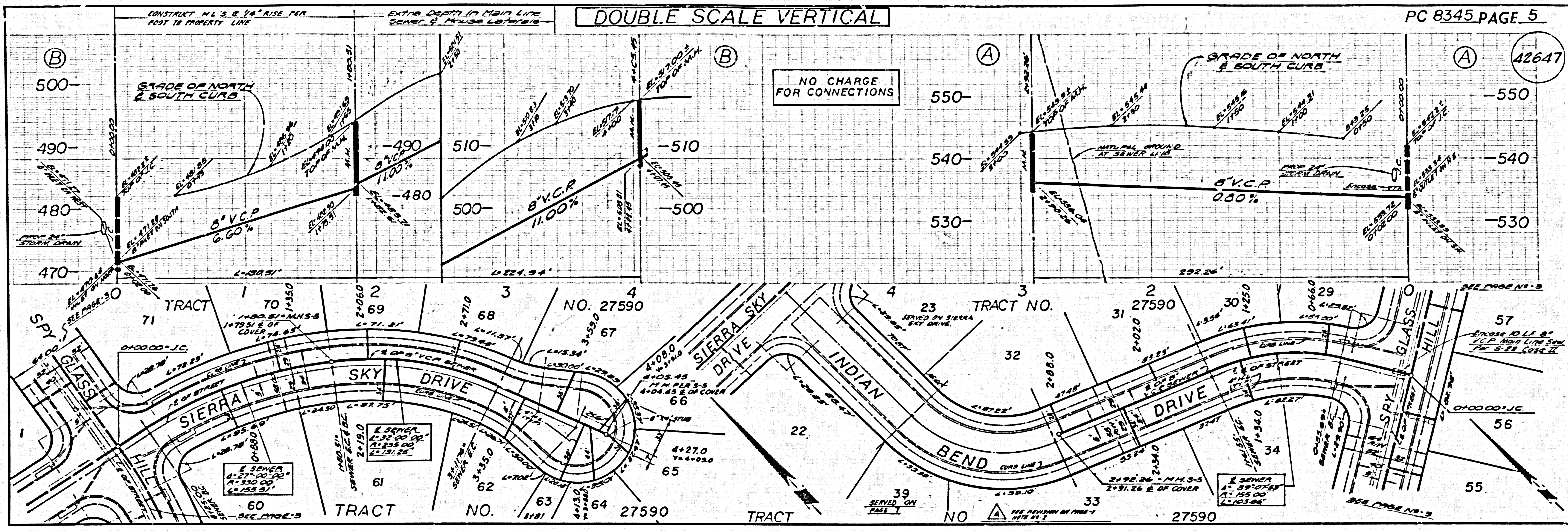
DOUBLE SCALE VERTICAL

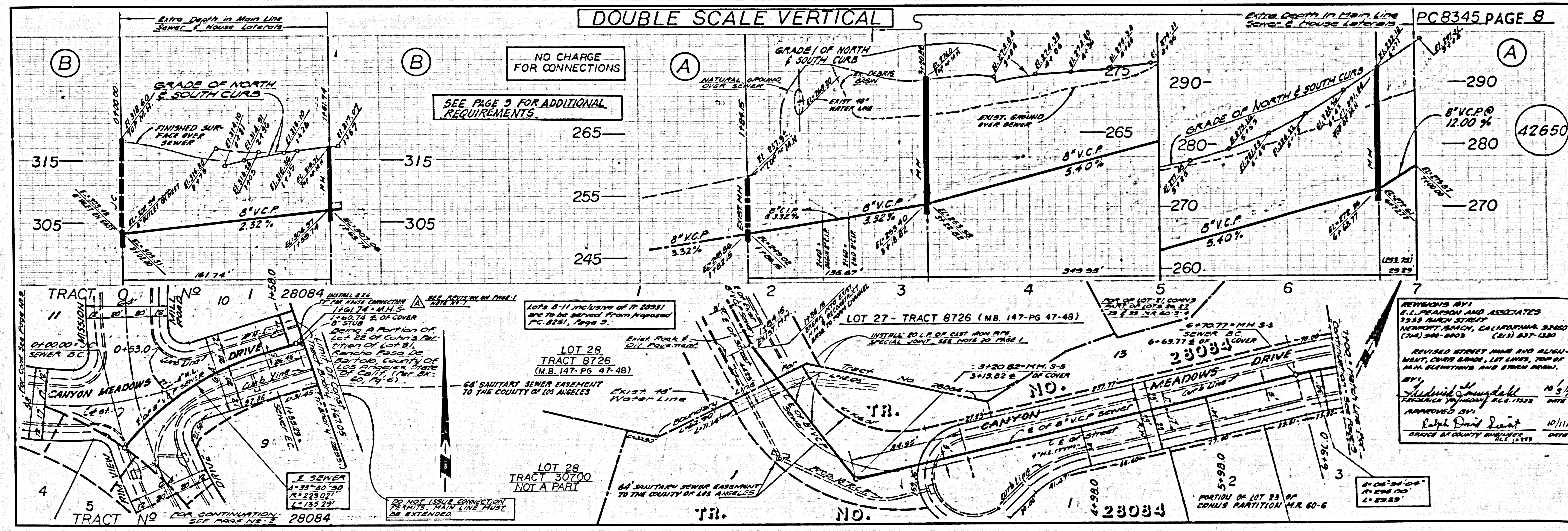
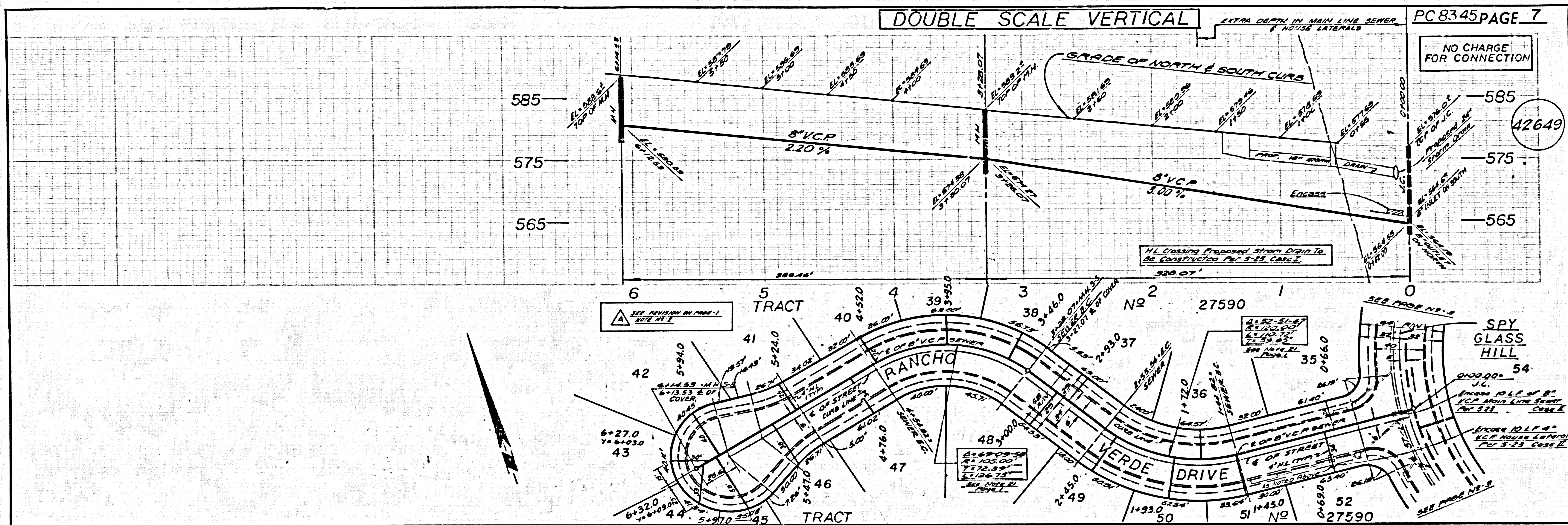
Extra Depth in Main Line Sewer & House Laterals

NO CHARGE FOR CONNECTIONS

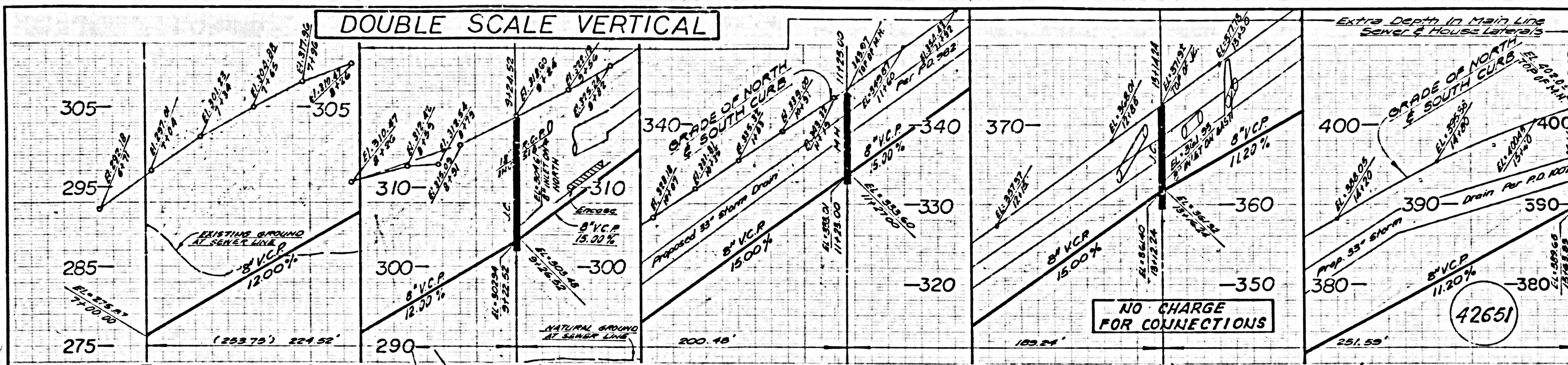
42646







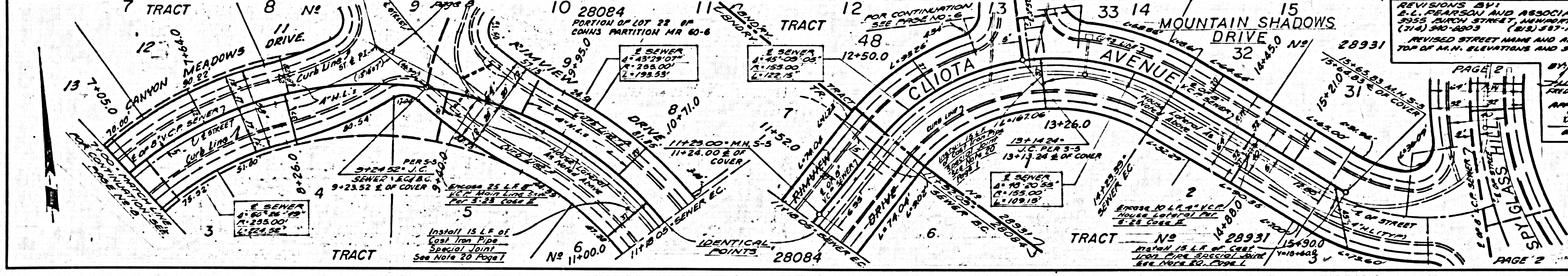
DOUBLE SCALE VERTICAL



- REVISION D**
- The future streets of proposed Tract No. 28084 are to be made part of Tract No. 28931 or sewer easement to the County of Los Angeles.
 - Manholes shall be shown to be constructed at the following locations:

STATION	PAGE	DATE
3+20.82	8 A	1-6-74
6+70.77	8 A	9-24-52
 - The tops of the manholes at the following locations shall be 2 1/2 feet above the ground elevations:

STATION	DATE
3+20.82	1-6-74
6+70.77	9-24-52
 - All the manhole tops listed under item (3) shall be sealed with for.
 - Each manhole listed under item (3) shall be protected by installing three 4" x 4" Posts, 8' long, set 3' into the ground around the manhole.
 - The present surface over sewer shall be shown as a dashed line for the sewers shown on Pages 3, 8 and 9.
 - Inspection, using a television camera, will be required on all portions of the sewer under the "drains basin permit" and these other portions having a cover greater than 20 feet. Arrangements for this inspection shall be made with the Sewer Maintenance Superintendent and the Construction Division.
- APPROVED BY: *Quill E. McColla*
Office of the County Engineer R.E. 15731 DATE 9/1/72
- HOUSE LATERALS CROSSING PROPOSED STORM DRAIN TO BE CONSTRUCTED PER S-27, CASE 1 AND ENCASE AS SHOWN.



- REVISIONS BY:**
E.L. FEARSON AND ASSOCIATES
3555 BURCH STREET, VANUSETT BEACH, CALIFORNIA 92660
(714) 540-4893 (B.R.) 387-1830
- REVISED STREET NAME AND ALIGNMENT, CURB GRADE, LOT LINES, TOP OF M.N. ELEVATIONS AND STORM DRAIN.
- APPROVED BY: *Walter D. Stewart*
Office of the County Engineer R.E. 15731 DATE 10/1/72