

DOUBLE SCALE
LOMITA BLDG. DIST. NO. 12

PROFILE ALIGNMENT AND GRADE OF
SANITARY SEWERS P.C. 8350
PAGE 1

SANITARY SEWER RIGHT OF WAY
WEST OF WESTERN AVE.

PRIVATE CONTRACT NO. 8350

W.S. 28

2 SHEETS; 3 PAGES

41592

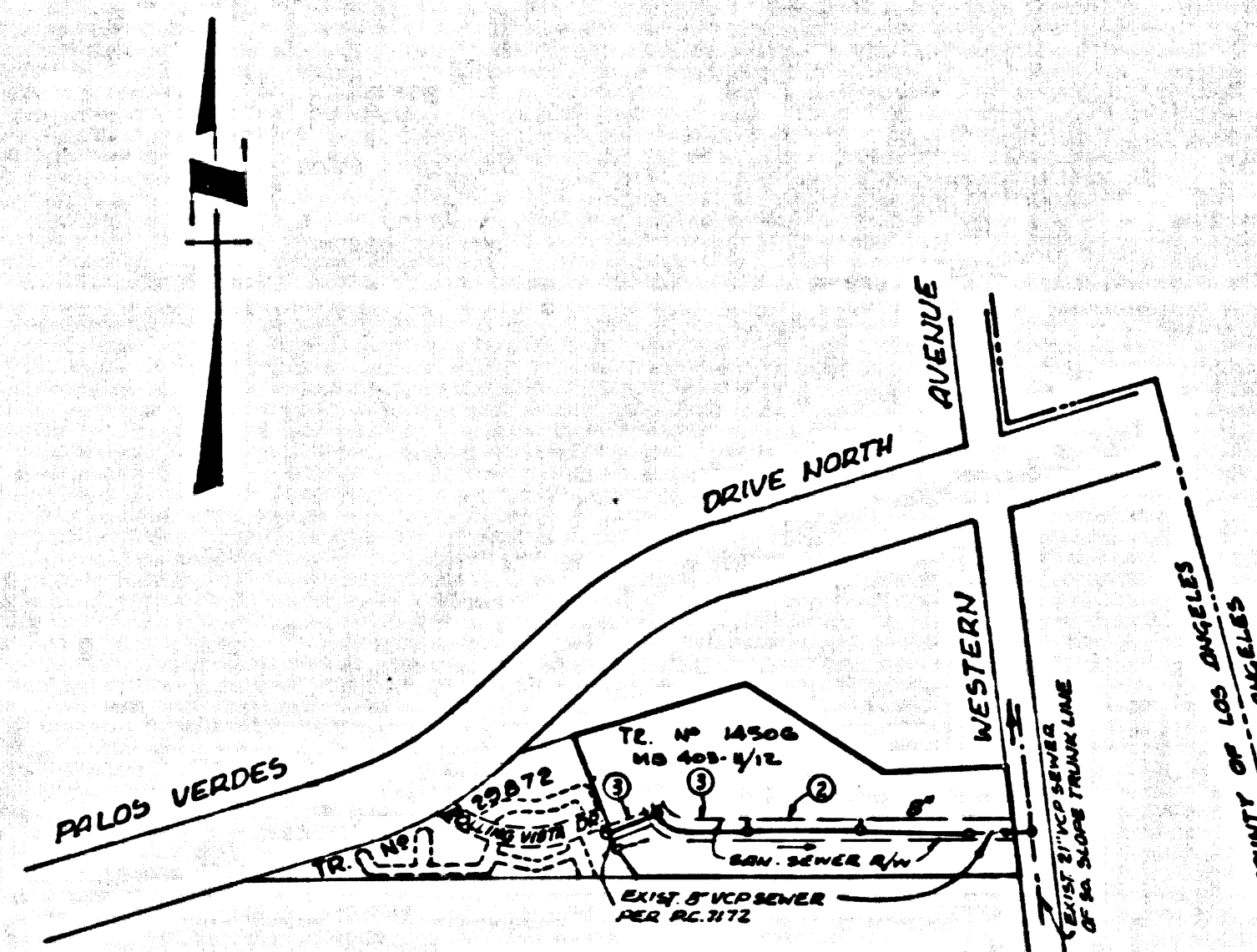
SCALE: VERT. 1"=6'
HORIZ. 1"=60'

PREPARED IN THE OFFICES OF
JENNINGS-SCOTT ENGINEERING COMPANY
1100 S. BEVERLY DR. LOS ANGELES, CALIF.

APPROVED BY: [Signature]
REG. C. E. NO. 14556

FOR LEGEND SEE PLAN NO. S-1

B.M. B.Y. 5951 ELEV. 324.333
Fd. Rd. Man. in well & down @ drive near P.I. of
curve on crest of hill Palos Verdes Dr. N., 5' S.
of N. edge of S. drive 0.4 mile W. of Western Ave.
PALOS VERDES QUAD. 19 65



No connections for the disposal of
industrial wastes shall be made to
sewers shown on these drawings
without written permission from the
Chief Engineer and General Manager
of the County Sanitation Districts.

County Sanitation Districts shall be
notified prior to the following no
required inspection can be made
(Phone 397-1085 - 696-8097)

Association of the project.

INDEX MAP
P.C. 8350
SCALE: 1"=600'

- NOTES:
1. PROFILE STAKES ON THE PROPERTY LINE OR PROPERTY LINES PRODUCED AT RIGHT ANGLES TO THE SEWER LINE AT THE CENTER LINE OF EACH MANHOLE.
 2. NO REPRESENTATIVE OF THE COUNTY ENGINEER WILL SURVEY OR LAY OUT ANY PORTION OF THE WORK.
 3. THE PRIVATE ENGINEER SHALL FURNISH THE COUNTY ENGINEER WITH GRADE SHEETS AND STATIONING FOR ALL HOUSE LATERALS AND "T" OR "Y" BRANCHES AND SHALL PROVIDE STAKES FOR THEM AT THEIR PROPER LOCATIONS WITH STATIONING PLAINLY MARKED. ALL HOUSE LATERALS SHALL BE CONSTRUCTED IN A STRAIGHT ALIGNMENT AT RIGHT ANGLES FROM THE MAIN LINE SEWER EXCEPT AS SHOWN ON THE PLANS. HOUSE LATERALS FROM CHIMNEYS SHALL NOT HAVE AN ANGLE OF LESS THAN 45° WITH THE MAIN LINE SEWER. ANY CHANGE IN ALIGNMENT SHALL BE REQUESTED BY WRITING BY THE PRIVATE ENGINEER.
 4. THE PRIVATE ENGINEER SHALL FURNISH THE HOUSE LATERAL DEPTH AT THE PROPERTY LINE BELOW THE TOP OF CURB ELEVATION FOR EACH HOUSE LATERAL ON THE GRADE SHEET.
 5. NO REVISIONS SHALL BE MADE IN THESE PLANS WITHOUT THE APPROVAL OF THE COUNTY ENGINEER.
 6. THE CONTRACTOR SHALL NOTIFY THE CONSTRUCTION DIVISION BY TELEPHONE, MADISON 9-8747, EXT. 8158, AT LEAST TWENTY-FOUR HOURS BEFORE STARTING ANY WORK UNDER THIS CONTRACT.
 7. ALL STRUCTURES SHALL BE BUILT BRICK MANHOLES PER S-3 OR RECAST CONCRETE MANHOLES PER S-5 OR S-6, EXCEPT AS NOTED.
 8. "Y" OR "T" BRANCHES MAY BE USED FOR CONNECTIONS TO MANHOLE SEWERS EXCEPT AS NOTED.
 9. MANHOLE TOPS IN UNIMPROVED RIGHTS-OF-WAY TO BE SIX INCHES ABOVE FINISHED GRADE.
 10. USE EXTRA STRENGTH PIPE. ALL PIPE IS STANDARD DEPTH EXCEPT AS NOTED.
 11. VITRIFIED CLAY PIPE JOINTS SHALL BE TYPE "D" "H" OR "C" PER STANDARD SPECIFICATIONS, SEC. 306-2.
 12. IF A POWER POLE IS WITHIN THREE FEET OF THE SEWER, THE SEWER SHALL BE ENCASED, PER S-23, TWO FEET ON EACH SIDE FROM THE POINT OF INTERFERENCE.
 13. IF DURING THE COURSE OF CONSTRUCTION IT IS DETERMINED THAT THERE IS LESS THAN FOUR FEET OF COVER OVER THE TOP OF A MAIN LINE OR HOUSE LATERAL V.C.P. SEWER WHICH IS NOT INDICATED ON THE PLANS, THE PIPE SHALL BE ENCASED PER S-23, UNLESS OTHERWISE APPROVED BY THE COUNTY ENGINEER.
 14. HOUSE LATERALS TO BE CONSTRUCTED WITH INVERTS AT PROPERTY LINE 4 FEET BELOW CURB GRADE EXCEPT AS NOTED.
 15. REINFORCE ALL TRENCHES WITHIN PAVED AREAS TO MEET L.A. COUNTY ROAD DEPT. OR CALIFORNIA STATE HIGHWAY REQUIREMENTS IN ACCORDANCE WITH PERMITS.
 16. SEWERS TO BE TESTED FOR LEAKAGE PER SECTION 306.1.3.2 UNIFORM STANDARD SPECIFICATIONS.
 17. REFER TO SECTION 7, 10, & 11 OF THE STANDARD SPECIFICATIONS REGARDING SAFETY ORDERS.
 18. SPECIAL BACKFILL IN DESIGNATED AREAS:
a. BACKFILL TRENCH AND REPLACE OTHER EARTH REMOVED SO AS TO ACHIEVE THE NATURAL OR FINISHED GRADES AND SLOPES SHOWN ON THE GRADING PLAN APPROVED FOR THIS TRACT BY THE BUILDING AND SAFETY DIVISION.
b. ALL BACKFILL AND EARTH REPLACED SHALL BE COMPACTED TO A MINIMUM OF 95% OF MAXIMUM DENSITY PER A.S.T.M. STANDARD METHOD OR TEST THEREOF AS APPROVED. ACCEPTABLE CERTIFICATION OF SUCH COMPACTION SHALL BE SUBMITTED TO THE CONSTRUCTION DIVISION.
 19. ALL JOINTS BETWEEN CAST IRON PIPE AND VITRIFIED CLAY PIPE SHALL BE MADE WITH A RUBBER SLEEVE JOINT TYPE "C" OR "D" (WITH OUSMAG IF NECESSARY) PER STANDARD SPECIFICATIONS, SECTION 306-2. THE FOLLOWING LATEST REVISED STANDARD PLANS ON FILE IN THE OFFICE OF THE COUNTY ENGINEER SHALL APPLY IN THE CONSTRUCTION OF THIS PROJECT:
LEGEND:
MINIMUM PUBLIC SAFETY REQUIREMENTS S-1
BRICK MANHOLE S-2
RECAST PRECAST CONCRETE MANHOLE S-3
REINFORCED PRECAST CONCRETE MANHOLE S-5
MANHOLE FRAME AND COVER S-6
STANDARD MANHOLE STEP S-7
BEDDING FOR SEWER PIPE S-8
CHASING AND ENCASEMENT S-23
WYE OR TEE SUPPORT S-25

COLLECT CHARGES
AS INDICATED

20. UNABLE TRENCH METHODS
21. THE CONTRACTOR SHALL PROTECT THE EXIST SEWERS AND MAINTAIN THAT PORTION TO BE ABANDONED UNTIL SUCH TIME AS THE PROPOSED SEWER IS IN PLACE AND RESPECTED.
22. RE-USE SALVAGED MANHOLE FRAMES AND COVERS.

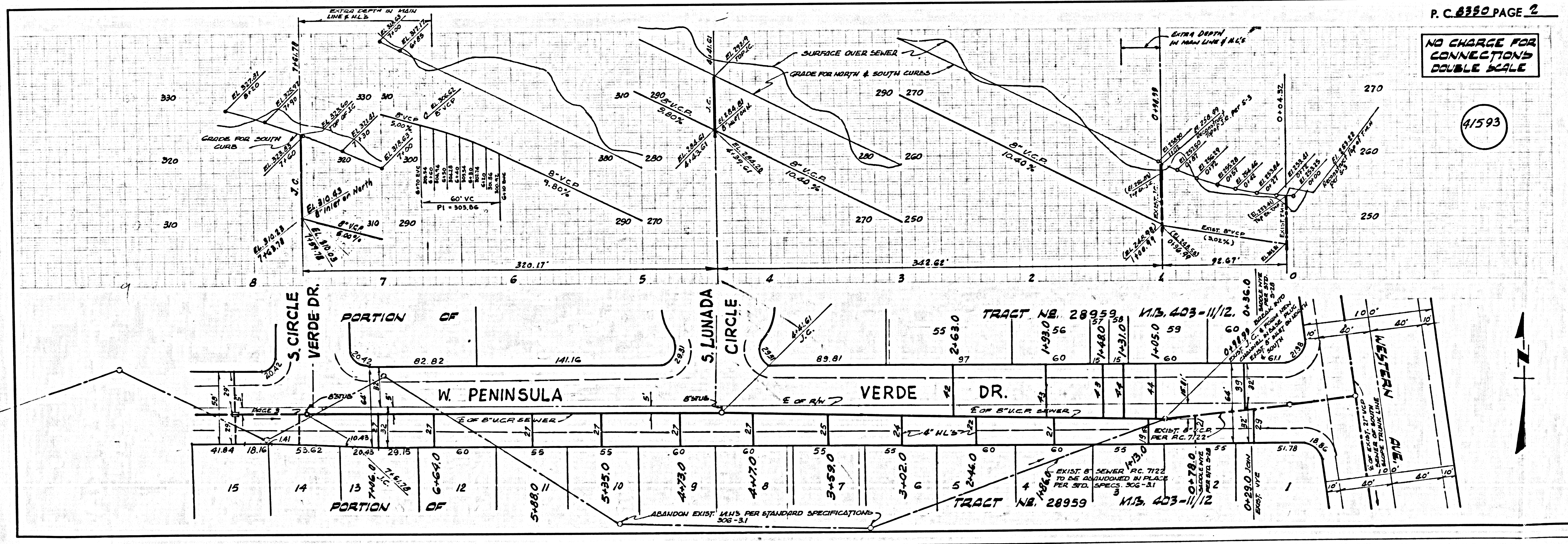
NOTES:
GRADES TO WHICH THIS IMPROVEMENT IS TO BE CONSTRUCTED ARE SHOWN ON PLANS AND PROFILE GRADE POINTS FOR TOP OF CURBS, CENTER LINE OF STREETS, OR CENTER LINE OF ALLEYS ARE SHOWN BY CIRCLES ON PROFILES AT ALL POINTS BETWEEN DESIGNATED POINTS. THE GRADE SHALL BE ESTABLISHED SO AS TO CONFORM TO A STRAIGHT LINE DRAWN BETWEEN SAID DESIGNATED POINTS. ELEVATIONS ARE IN FEET ABOVE M.S.L. U.S. SEA LEVEL DATUM OF 1929.
THIS DRAWING AND THE DATA HEREON ARE HEREBY MADE A PART OF THE SPECIFICATIONS FOR PUBLIC WORKS CONSTRUCTION AND WORK SHALL BE CONSTRUCTED ACCORDING TO THE UNIFORM STANDARD SPECIFICATIONS FOR PUBLIC WORKS CONSTRUCTION AND COUNTY ENGINEER SPECIAL PROVISIONS DATED JAN. 2, 1965, AS REVISED, AND SHALL BE PROSECUTED ONLY IN THE PRESENCE OF THE COUNTY ENGINEER.
BEFORE WORK IS STARTED, THE CONTRACTOR MUST OBTAIN A PERMIT TO EXCAVATE IN COUNTY STREETS FROM THE L.A. COUNTY ROAD DEPT., DISTRICT OFFICE NO. 10, 1100 S. BEVERLY DR., LOS ANGELES, CALIF. AND PAY A FEE TO THE COUNTY ENGINEER, ROOM 338 COUNTY ENGINEERING BUILDING, 120 SOUTH SPRING STREET, LOS ANGELES, CALIF. REGIONAL OFFICE, SUFFICIENT TO COVER THE COST OF CONSTRUCTION INSPECTION AND RECORD PLANS.
APPROVAL OF THIS PLAN BY THE COUNTY OF LOS ANGELES DOES NOT CONSTITUTE A REPRESENTATION AS TO THE ACCURACY OF THE LOCATION OF OR THE EXISTENCE OR NON-EXISTENCE OF ANY UNDERGROUND UTILITY PIPE, OR STRUCTURE WITHIN THE LIMITS OF THIS PROJECT. THIS NOTE APPLIES TO ALL AGES.
IF WORK IS TO BE DONE IN A STATE HIGHWAY, A PERMIT MUST BE OBTAINED FROM THE STATE OF CALIFORNIA, DIVISION OF HIGHWAY, 120 SOUTH SPRING STREET, LOS ANGELES, CALIFORNIA.

COUNTY OF LOS ANGELES, CALIFORNIA
JOHN A. LAMBIE, COUNTY ENGINEER J. D. PARKHURST, CHIEF ENGINEER
CO. SANITARY DISTRICT

APPROVED BY: [Signature] REGIONAL ENGINEER APPROVED BY: [Signature] OFFICE ENGINEER

CHECKED BY: [Signature] 10/21/69
REG. C.E. NO. 10653

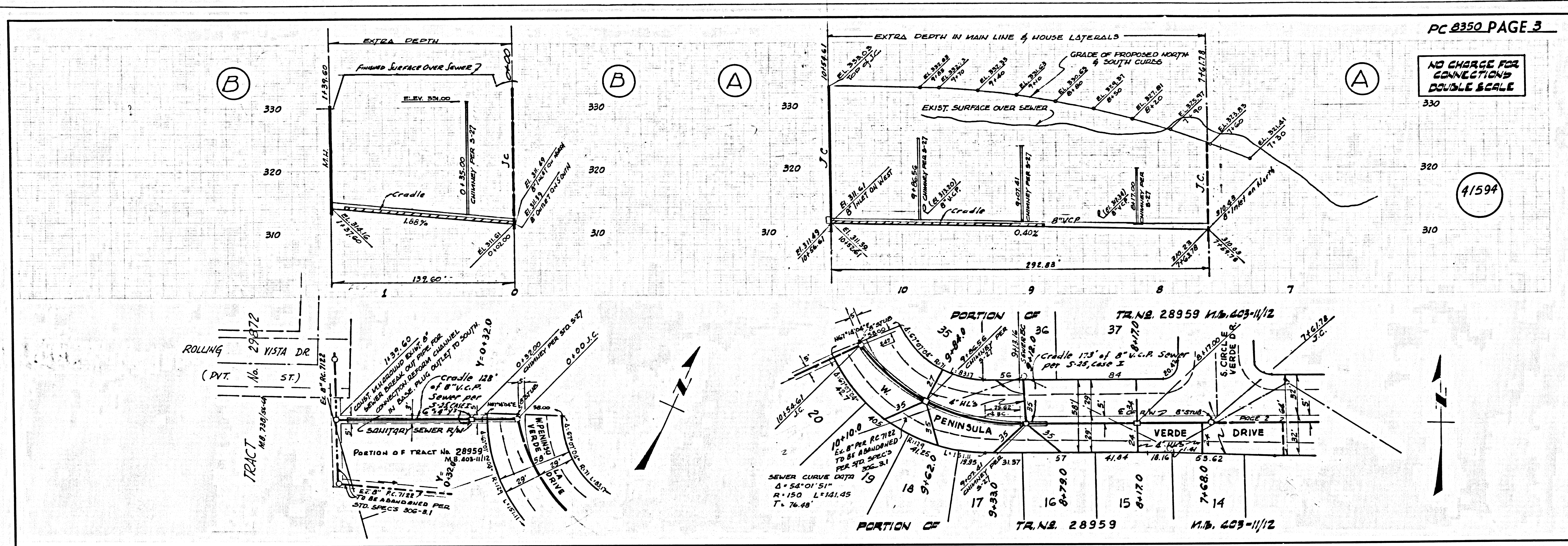
REVISION: Moved J.C. from station 7+51.78 to 7+61.78
and changed grades accordingly.
4-17-69 J.N. 0370.01
APPROVED BY: [Signature]



P.C. 8350 PAGE 2

NO CHARGE FOR
CONNECTIONS
DOUBLE SCALE

41593



PC 8350 PAGE 3

NO CHARGE FOR CONNECTIONS DOUBLE SCALE

41594

PAGE