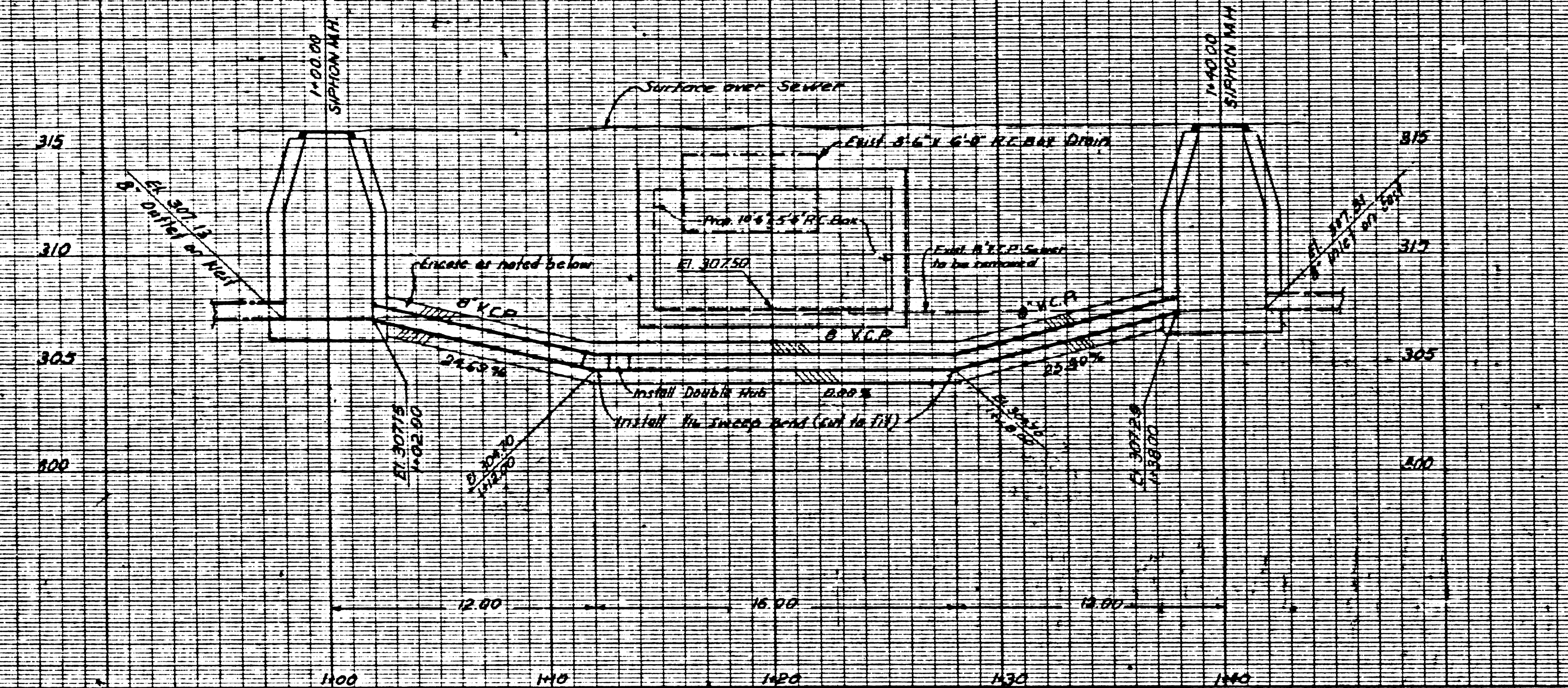
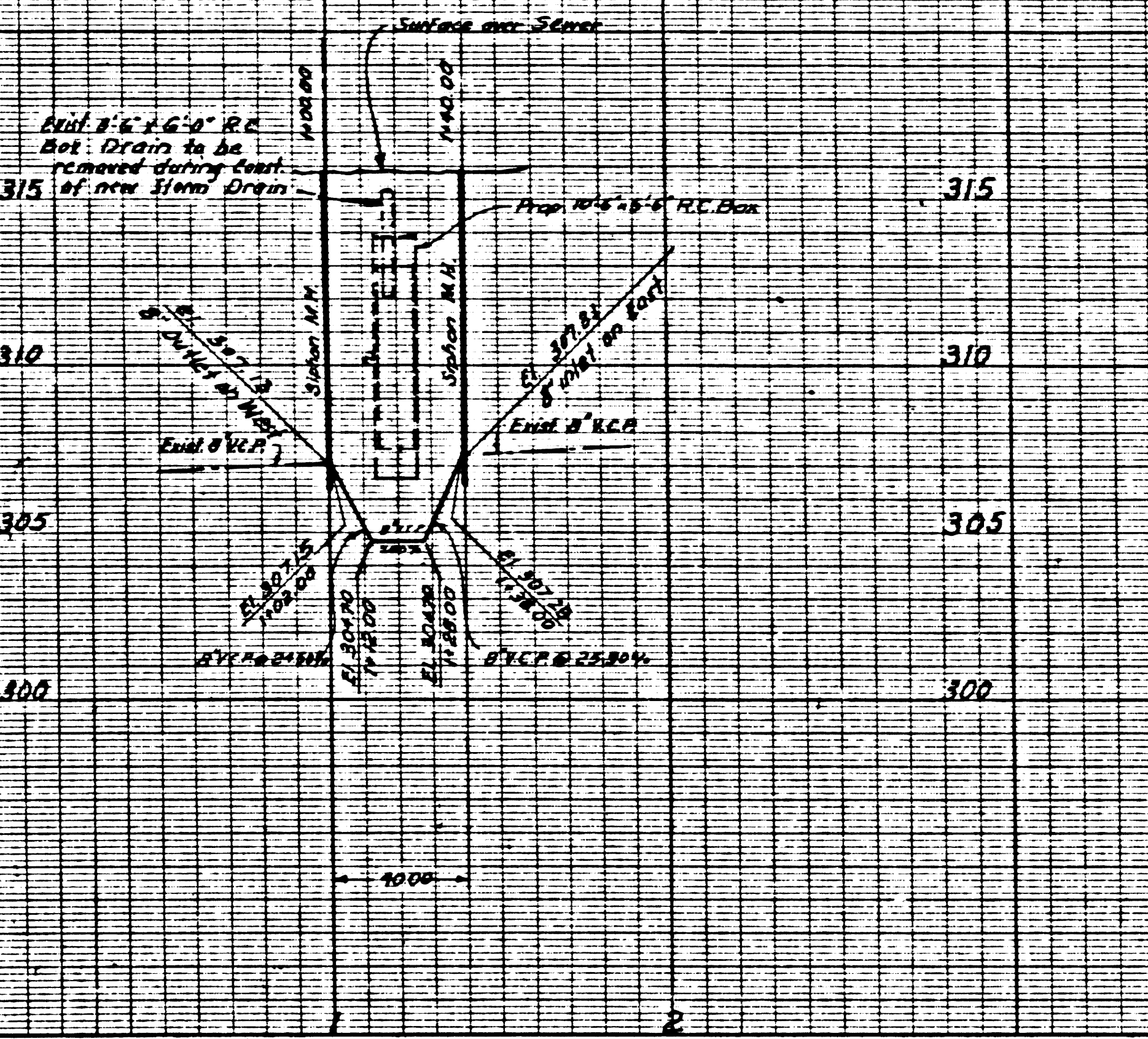


PROFILE SCALE
HORIZ. 1" = 4'
VERT. 1" = 4'



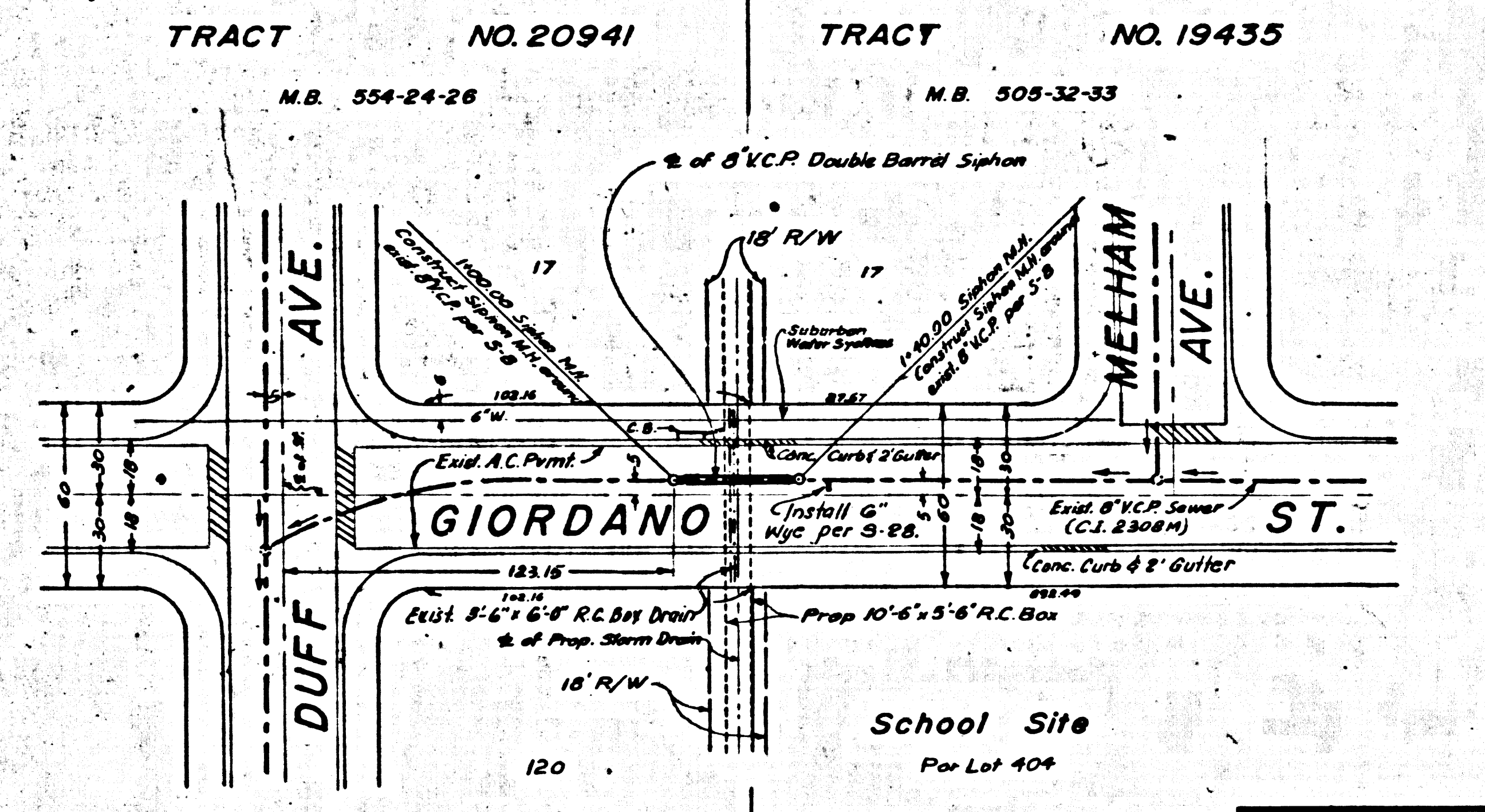
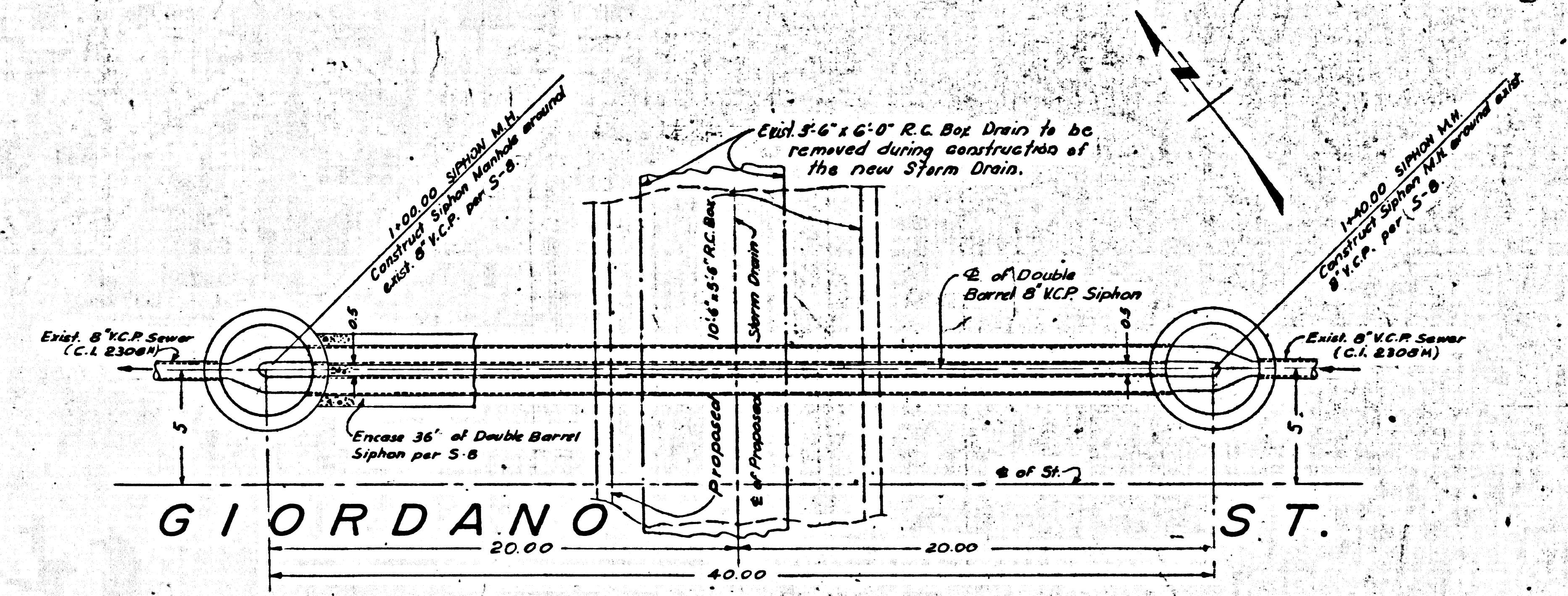
B.M.S.D. 383 El. 316.237 F.B. 3339-II
Giordano St. & Melham Ave. N.W. Corner
By Spl. in Ld. S'W. of W. Curb R.

PROFILE SCALE
HORIZ. 1" = 4'
VERT. 1" = 4'



GENERAL SEWER NOTES

1. Sewer Siphons shall be constructed in accordance with the Standard Specifications for Public Works Construction (hereinafter referred to as the Standard Specifications), Special Provisions and Standard Plans on file in the office of the County Engineer.
 2. Refer to Section 7-10.4.1 of the Standard Specifications, regarding Safety Orders.
 3. Existing sewer service and flow shall be maintained at all times.
 4. The Contractor shall notify the Construction Division of the County Engineer by telephone: 629-4747 Ext. 8351, at least 24 hours before starting any work under this contract.
 5. The following listed revised Standard Plans shall apply in the construction: S-1, S-2, S-3, S-4, S-5, S-6, S-7, S-8, S-9, S-10, S-11, S-12, S-13, S-14, S-15, S-16, S-17, S-18, S-19, S-20, S-21, S-22, S-23, S-24, S-25, S-26, S-27, S-28, S-29, S-30, S-31, S-32, S-33, S-34, S-35, S-36, S-37, S-38, S-39, S-40, S-41, S-42, S-43, S-44, S-45, S-46, S-47, S-48, S-49, S-50, S-51, S-52, S-53, S-54, S-55, S-56, S-57, S-58, S-59, S-60, S-61, S-62, S-63, S-64, S-65, S-66, S-67, S-68, S-69, S-70, S-71, S-72, S-73, S-74, S-75, S-76, S-77, S-78, S-79, S-80, S-81, S-82, S-83, S-84, S-85, S-86, S-87, S-88, S-89, S-90, S-91, S-92, S-93, S-94, S-95, S-96, S-97, S-98, S-99, S-100.
- County Sanitation Division shall be notified prior to the following work that requires inspection on its part: (Phone 337-1033 or 629-4747)
- Assignment of the project.
- No objections for the disposal of industrial wastes shall be made to sanitary sewer or storm drainage systems unless permission from the Chief Engineer and proper permits of the County Sanitation Division.



DOUBLE BARREL SIPHON (A3)

SCALE: Horiz. 1" = 4'
Vert. 1" = 4'

REVISIONS			
MARK	DATE	DESCRIPTION	

TRACT NO. 20941
M.B. 554-24-28

TRACT NO. 606
M.B. 15-142-143

APPROVED
JOHN D. PARKHURST
CHIEF ENGINEER - CO. SAN. DIST. NO. 15

BY: *[Signature]*
OFFICE ENGINEER

PREPARED BY
JOHN A. LAMBIE
COUNTY ENGINEER
C.C. 8351
RECOMMENDED BY
[Signature]
DIVISION ENGINEER - SANITARY SEWER

RECOMMENDED BY
[Signature]
SANITARY ENGINEER (SEWER)

APPROVED BY
[Signature]
CHIEF ENGINEER

SCALE AS SHOWN
DATE MAY 78
DWG. NO. 364-1220-04.R
SHEET 17 OF 17

AS BUILT PLAN

1964 STORM DRAIN BOND ISSUE

LOS ANGELES COUNTY
FLOOD CONTROL DISTRICT

COUNTY PROJECT NO. 1220

SANITARY SEWER RECONSTRUCTION

42051