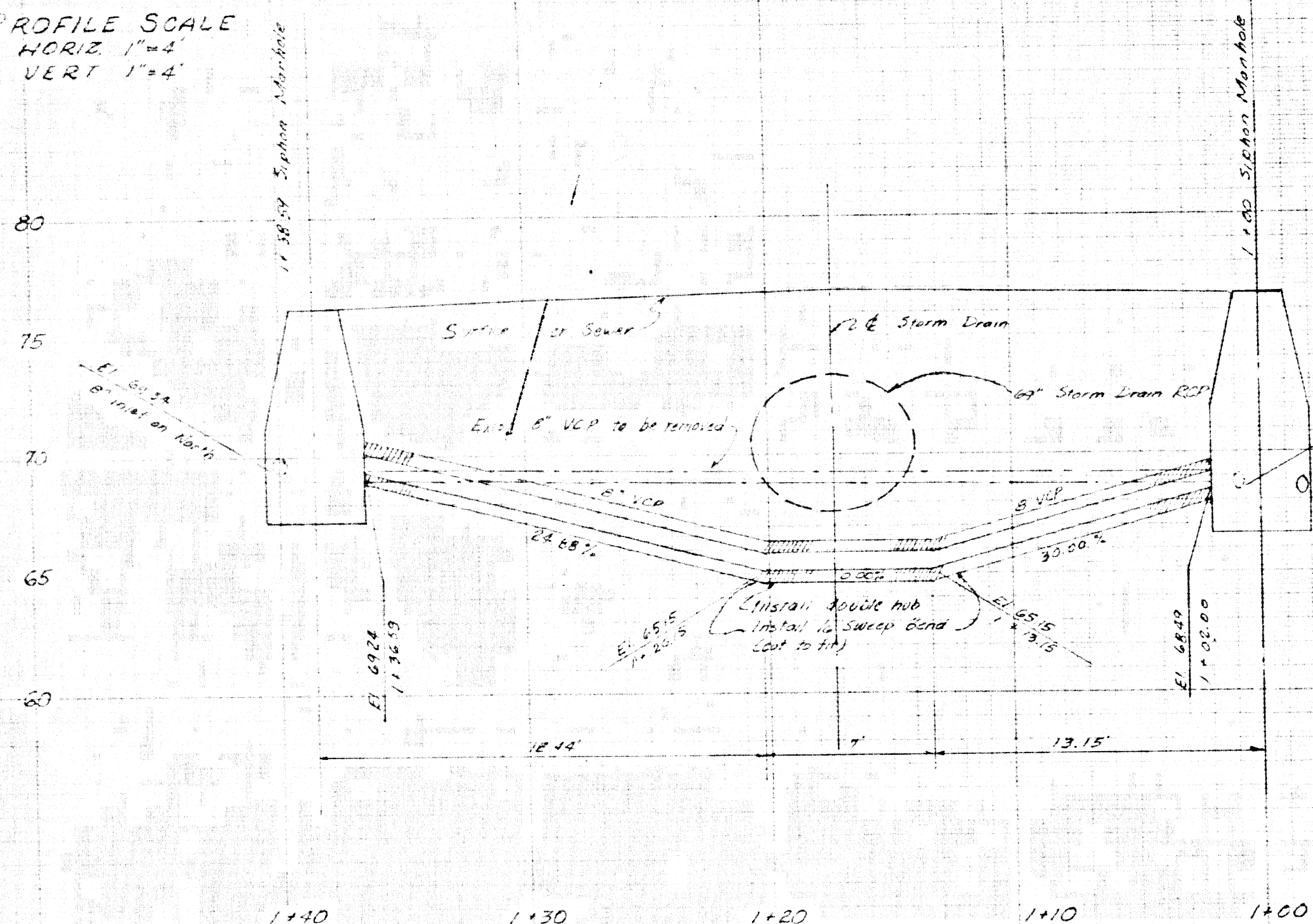
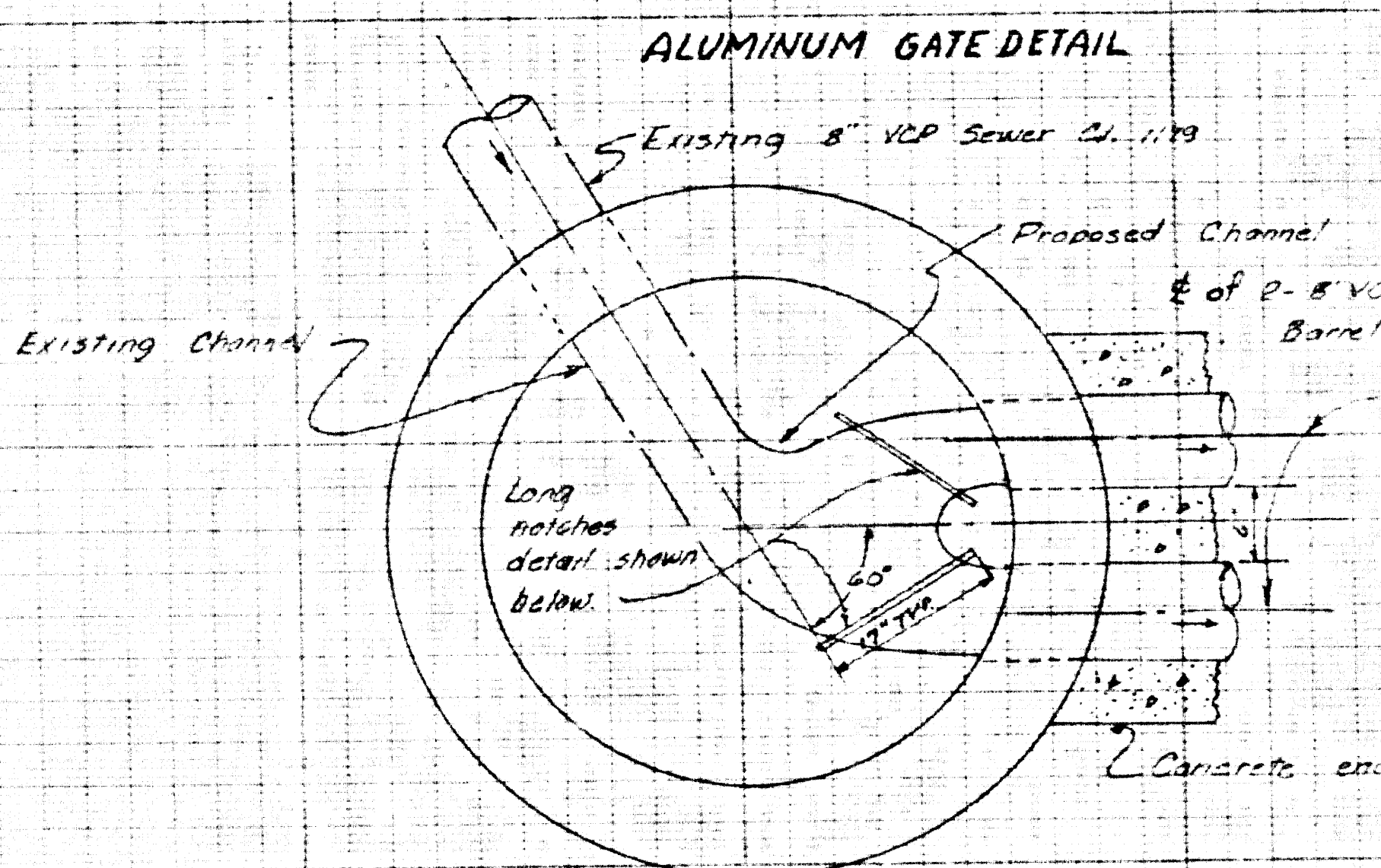
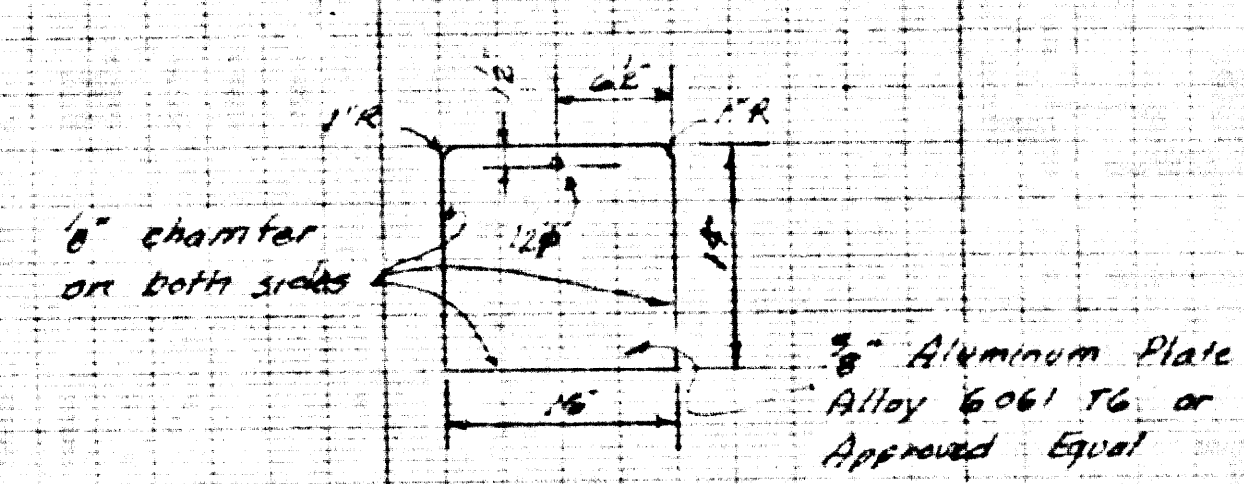


PROFILE SCALE  
HORIZ. 1"=4'  
VERT. 1"=4'



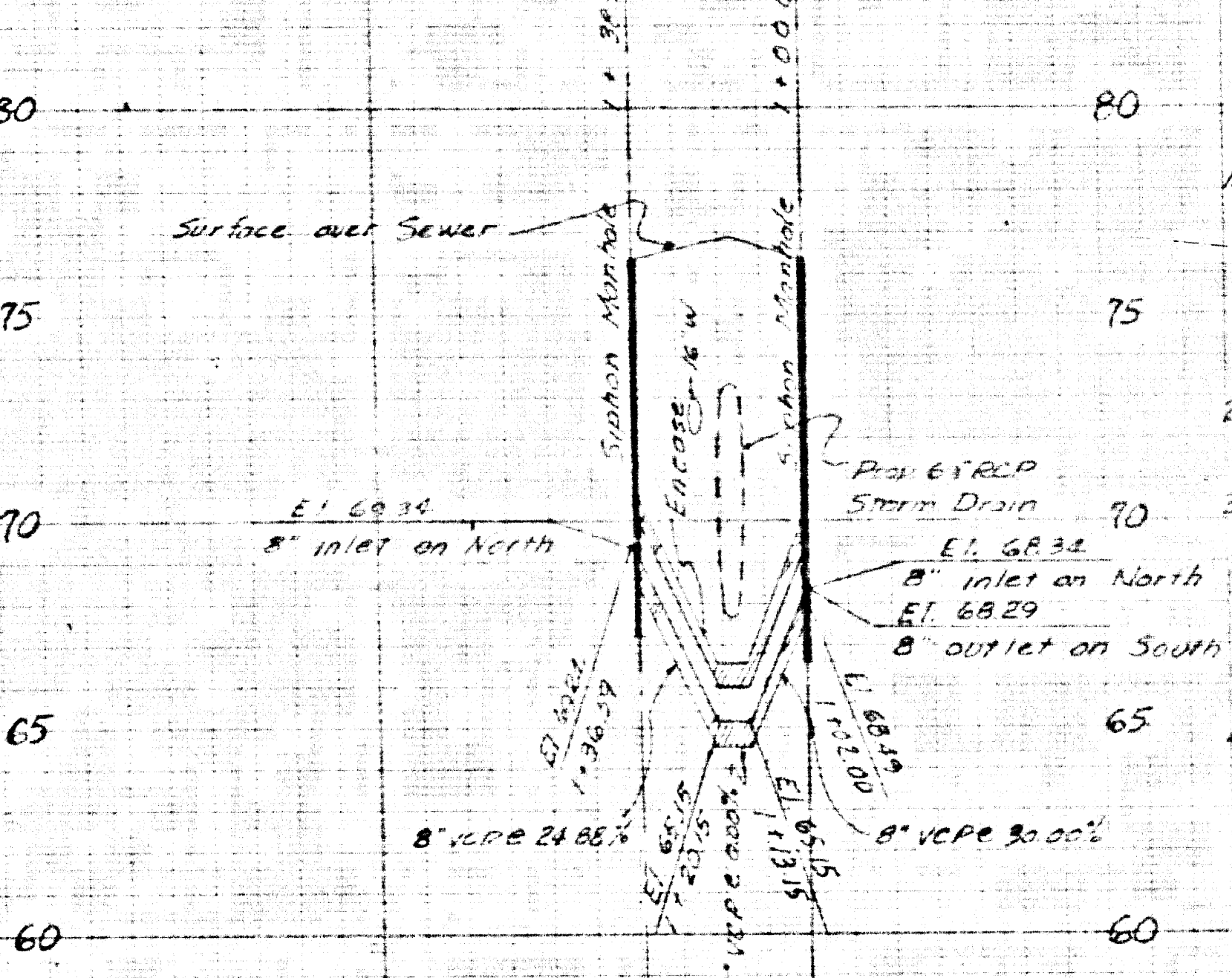
B.M. 5.02970 E1.76317 FB. 3354.49  
Inglewood Ave & 137th St.  
Bt. Spk. in E. cb. Inglewood Ave 10'  
S of SE CR.



DETAIL OF SIPHON M.H. BASE  
AT STA. 1+38.59  
SCALE 3/4"=1'-0"

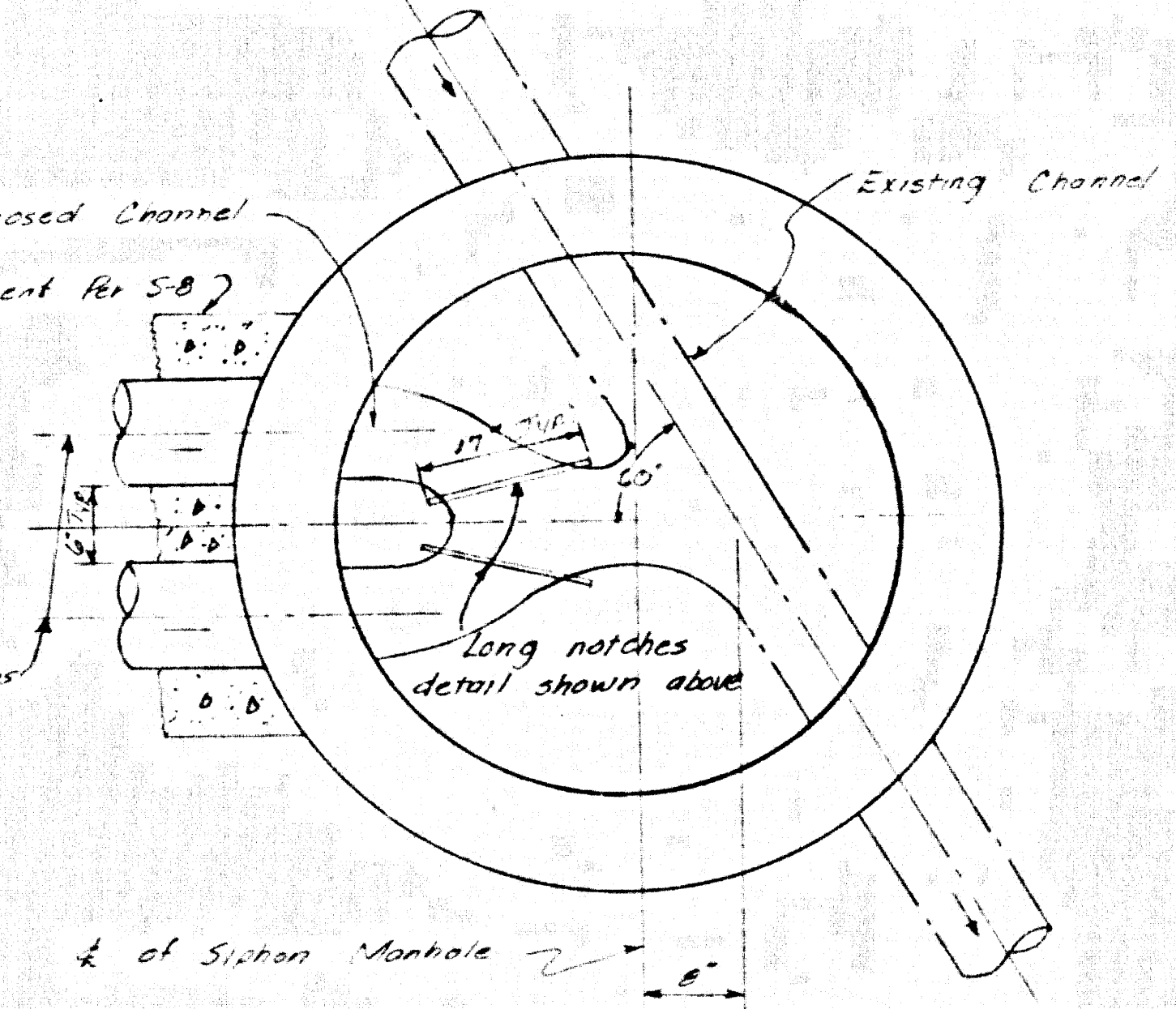
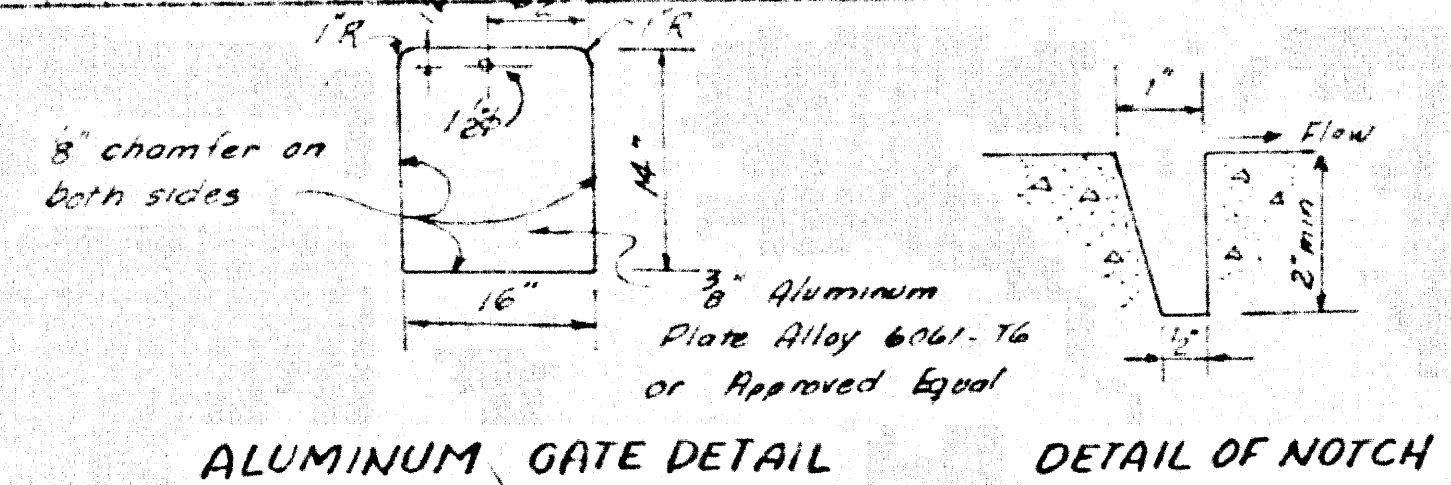
NOTE: The contractor shall determine the position of notches in the field. Notches shall accommodate the 12\"/>

PROFILE SCALE  
HORIZ. 1"=40'  
VERT. 1"=4'



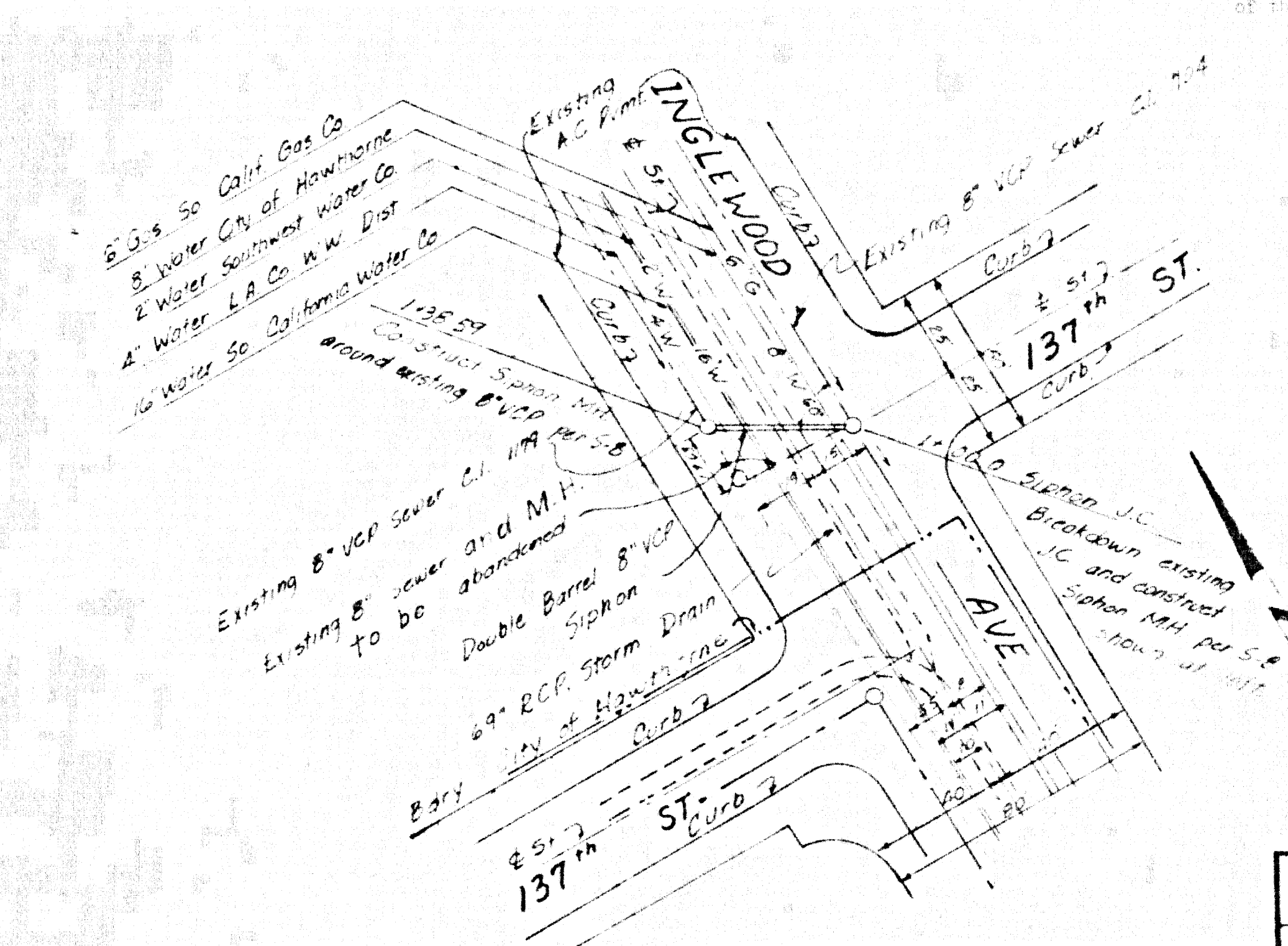
GENERAL SEWER NOTES

- Sanitary sewers shall be constructed in accordance with the Standard Specifications for Public Works Construction (hereinafter referred to as the Standard Specifications), Special Provisions and Standard Plans on file in the Office of the County Engineer.
- Existing sewer services and flow shall be maintained at all times.
- At least 24 hours before starting work on this project the Contractor shall notify: The City Engineer of Hawthorne 761 574-1111 The County Engineer 81 829-4749 Ext. 81-552
- Refer to Sec. 7-104.1 of the Standard Specifications regarding safety orders.
- Construction shall conform to the following Standard Plans: S1, S-2, S-3, S-5, S-6, S-8, S-15, S-17, S-23



DETAIL OF SIPHON J.C. BASE  
AT STA. 1+00  
SCALE 3/4"=1'-0"

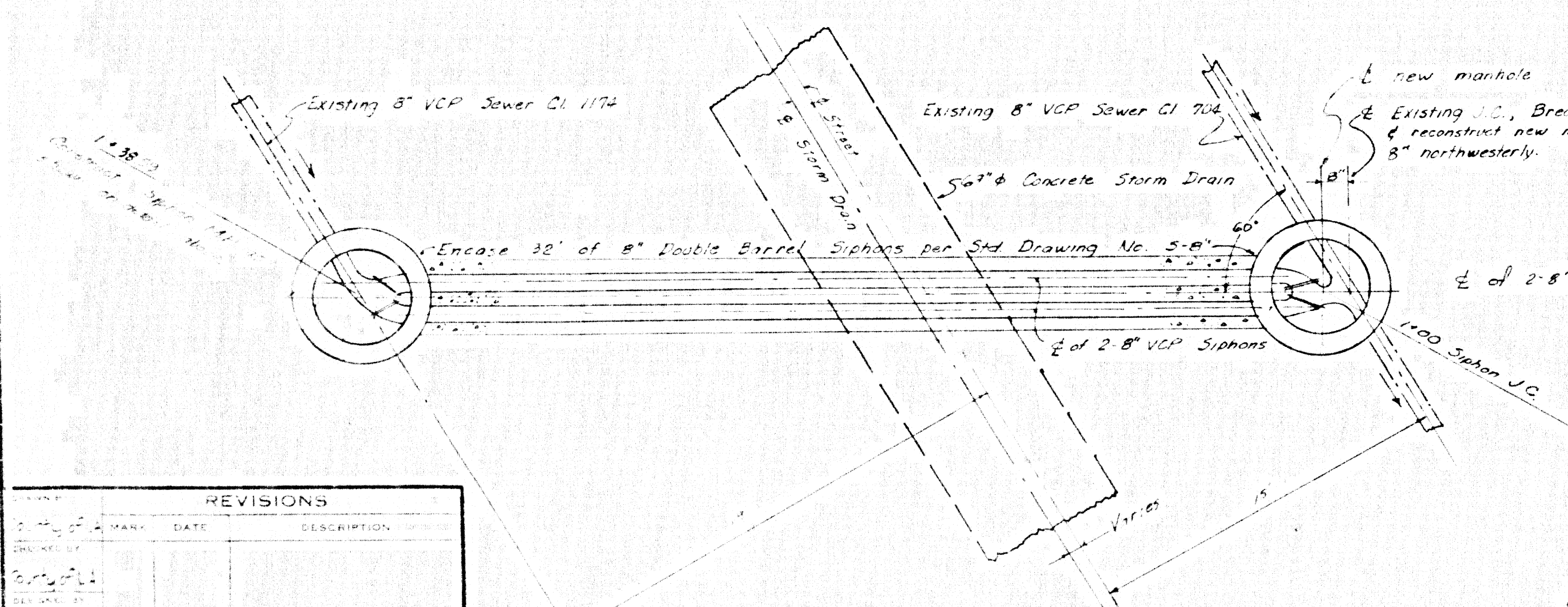
NOTE: The contractor shall determine the position of notches in the field. Notches shall accommodate the 12\"/>



42023

NO.	REVISIONS	DATE	DESCRIPTION

DOUBLE BARREL 8" V.C.P. SIPHONS  
SCALE 1"=4'



APPROVED  
JAMES H. MITSCH  
ASST. CITY ENGINEER  
CITY OF HAWTHORNE

APPROVED  
JOHN D. PARKHURST  
CHIEF ENGINEER  
CO. SAN. DIST. NO. 5

PREPARED BY  
JOHN A. LAMBIE  
COUNTY ENGINEER  
C.C. 8352

1964 STORM DRAIN BOND ISSUE  
LOS ANGELES COUNTY  
FLOOD CONTROL DISTRICT

INGLEWOOD AVE.  
PROJECT NO. 683  
(SUPPLEMENTAL)  
SANITARY SEWER RECONSTRUCTION

APPROVED BY: [Signature]  
DATE: JAN '70  
SCALE: [Blank]  
SHEET: [Blank] OF [Blank]