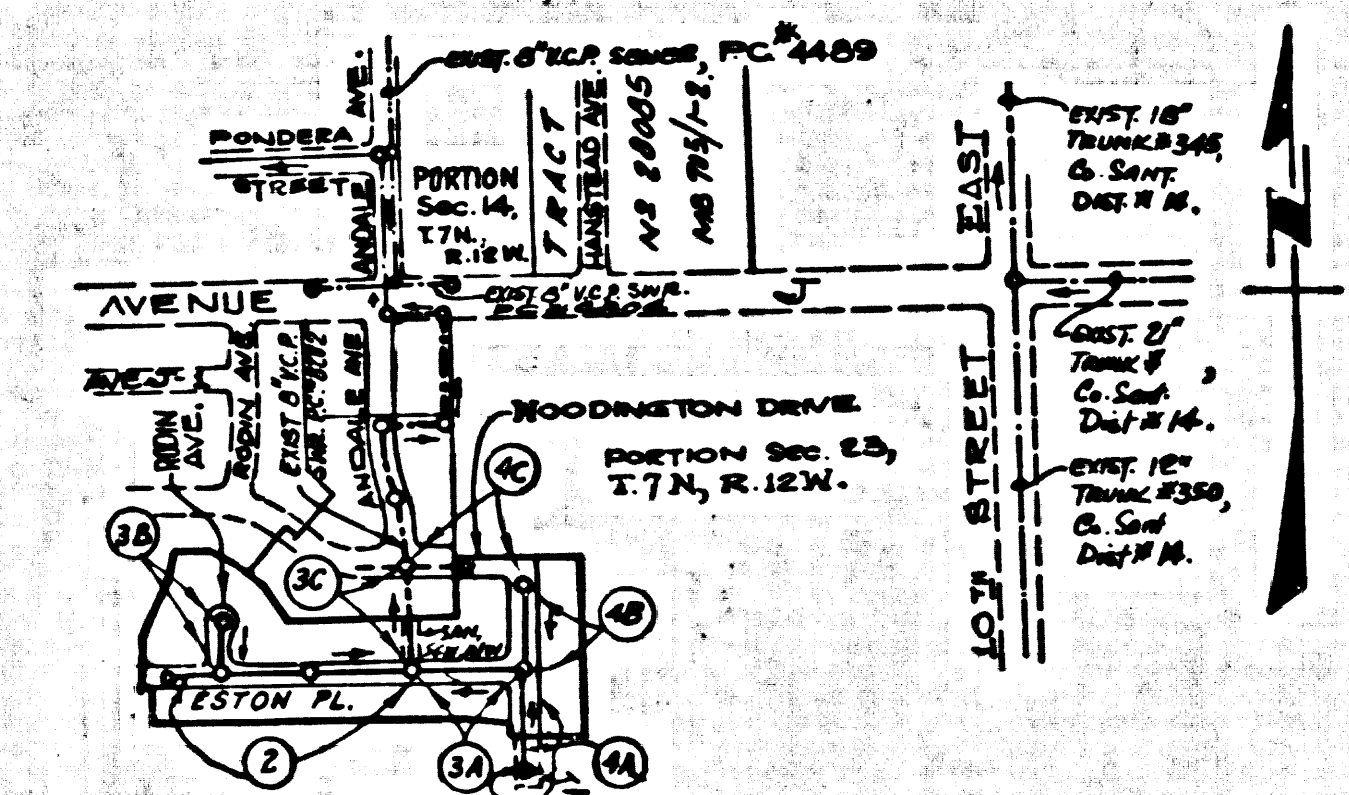


B.M. B.L.65 ELEV. 2391.642
 C.S. MONUMENT IN WELL @ INTERSECTION
 AVENUE "J" AND 5TH STREET EAST, MKD.
 (T.7N., R.12W., 1/4 COR. 14-23, EAST EDGE)
 LANCASTER QUAD. 19-65



INDEX MAP
 SCALE: 1"=400'
 P.C. 8357
 TRACT No. 30738

No connections for the disposal of
 industrial wastes shall be made to
 sewers shown on these drawings
 without written permission from the
 Chief Engineer and General Manager
 of the County Sanitation Districts.

County Sanitation Districts shall be
 notified prior to the following as
 that required inspection can be made
 (Phone 837-1026 x 822-2222)

Acceptance of the project.

LANCASTER BLDG. DIST. NO. 8

- NOTES:
1. PROVIDE STAKES ON THE PROPERTY LINE OR PROPERTY LINES PRODUCED AT RIGHT ANGLES TO THE SEWER LINE AT THE CENTER LINE OF EACH MANHOLE.
 2. NO REPRESENTATIVE OF THE COUNTY ENGINEER WILL SURVEY OR LAY OUT ANY PORTION OF THE WORK.
 3. THE PRIVATE ENGINEER SHALL FURNISH THE COUNTY ENGINEER WITH GRADE SHEETS AND STATIONING FOR ALL HOUSE LATERALS AND "T" OR "Y" BRANCHES AND SHALL PROVIDE STAKES FOR THEM AT THEIR PROPER LOCATIONS WITH STATIONING PLAINLY MARKED. ALL HOUSE LATERALS SHALL BE CONSTRUCTED IN A STRAIGHT ALIGNMENT AT RIGHT ANGLES FROM THE MAIN LINE SEWER EXCEPT AS SHOWN ON THE PLANS. HOUSE LATERALS FROM CHIMNEYS SHALL NOT HAVE AN ANGLE OF LESS THAN 45° WITH THE MAIN LINE SEWER. ANY CHANGE IN ALIGNMENT SHALL BE REQUESTED IN WRITING BY THE PRIVATE ENGINEER.
 4. THE PRIVATE ENGINEER SHALL FURNISH THE HOUSE LATERAL DEPTH AT THE PROPERTY LINE BELOW THE TOP OF CURB ELEVATION FOR EACH HOUSE LATERAL ON THE GRADE SHEET.
 5. NO REVISIONS SHALL BE MADE IN THESE PLANS WITHOUT THE APPROVAL OF THE COUNTY ENGINEER.
 6. THE CONTRACTOR SHALL NOTIFY THE CONSTRUCTION DIVISION BY TELEPHONE, MADISON 9-4747, EXT. 8153, AT LEAST TWENTY-FOUR HOURS BEFORE STARTING ANY WORK UNDER THIS CONTRACT.
 7. ALL STRUCTURES SHALL BE EITHER BRICK MANHOLES PER S-3 OR PRECAST CONCRETE MANHOLES PER S-3B. EXCEPT AS NOTED.
 8. "T" OR "Y" BRANCHES MAY BE USED FOR CONNECTIONS TO MAINLINE SEWERS, EXCEPT AS NOTED.
 9. RECORD TOPS IN UNIMPROVED AREAS SHALL BE TO BE THE HIGHEST ABOVE FINISHED GRADE.
 10. USE EXTRA STRENGTH PIPE, ALL PIPE IS STANDARD DEPTH EXCEPT AS NOTED.
 11. VITRIFIED CLAY PIPE JOINTS SHALL BE TYPE "D", "F", OR "G" PER STANDARD SPECIFICATIONS SECTION 208-2.
 12. IF A POWER POLE IS WITHIN THREE FEET OF THE SEWER, THE SEWER SHALL BE ENCASED, PER S-23, TWO FEET ON EACH SIDE FROM THE POINT OF INTERFERENCE.
 13. IF DURING THE COURSE OF CONSTRUCTION IT IS DETERMINED THAT THERE IS LESS THAN FOUR FEET COVER OVER THE TOP OF A MAIN LINE OR HOUSE LATERAL V.C.P. SEWER WHICH IS NOT INDICATED ON THE PLANS, THE PIPE SHALL BE ENCASED PER S-23, UNLESS OTHERWISE APPROVED BY THE COUNTY ENGINEER.
 14. HOUSE LATERALS TO BE CONSTRUCTED WITH INVERTS AT PROPERTY LINE 4 FEET BELOW CURB GRADE EXCEPT AS NOTED.
 15. RESURFACE ALL TRENCHES WITHIN PAVED AREAS TO MEET L.A. COUNTY ROAD DEPT. REQUIREMENTS.
 16. SEWERS TO BE TESTED FOR LEAKAGE PER SECTION 306.1.7 (B) (3) STANDARD SPECIFICATIONS.
 17. ALL STATE AND LOCAL TRENCH SAFETY ORDERS SHALL BE COMPLIED WITH PER STANDARD SPECIFICATIONS SECTION 306.1.7 (B) (4).
18. SPECIAL BACKFILL-IN-DESIGNATED AREAS—
 —REINFORCE TRENCH AND REPLACE OTHER EARTH REMOVED TO BE TO ACHIEVE THE NATURAL OR FINISHED GRADE AND SLOPE SHOWN ON THE DRAWING PLANS PROVIDED FOR THE SPACE BY THE DRAINING AND SAFETY DIVISION.
 —PER THE ENGINEER AND EARTH REPLACEMENT SHALL BE COMPACTED TO A MINIMUM OF 90% OF MAXIMUM DENSITY PER A.S.T.M. STANDARD METHOD OF TEST 99-07 BY MOONSHIN. ACCEPTABLE CERTIFICATION OF SUCH COMPACTION SHALL BE SUBMITTED TO THE COUNTY ENGINEER.
- THE FOLLOWING COUNTY ENGINEER STANDARD PLANS APPLY TO THIS PROJECT:
- | | |
|---|------|
| LEGEND | S-1 |
| MINIMUM BREAKAWAY SAFETY REQUIREMENTS | S-2 |
| BRICK MANHOLE | S-3 |
| NON-REINFORCED PRECAST CONCRETE MANHOLE | S-3B |
| REINFORCED PRECAST CONCRETE MANHOLE | S-3C |
| MANHOLE FRAMES AND COVERS | S-3D |
| MANHOLE STEPS | S-3E |
| BEDDING FOR SEWER PIPE | S-21 |
| CRADLING AND BACKFILLING | S-22 |
| PIPE ON TRENCH SUPPORT | S-23 |
| CHIMNEY PIPE AND BASE | S-24 |
| ALLOWABLE TRENCH WIDTHS | S-25 |

COLLECT CHARGES
 AS INDICATED

PROFILE ALIGNMENT AND GRADE OF
 SANITARY SEWERS
 CONSTRUCTED IN

P.C. 8357
 PAGE 1

TRACT No 30738
 PRIVATE CONTRACT NO. 8357

W.S. 70
 2 SHEETS; 4 PAGES
 SCALE: VERT. 1"=4' HORIZ. 1"=40'
 JUNE 1970
 PREPARED IN THE OFFICES OF
 CONSOLIDATED ENGINEERS CO.,
 8845 W. OLYMPIC BLVD., BEVERLY HILLS, CALIFORNIA.
 BY: Enrique Arcevedo
 REG. C. E. NO. 10316

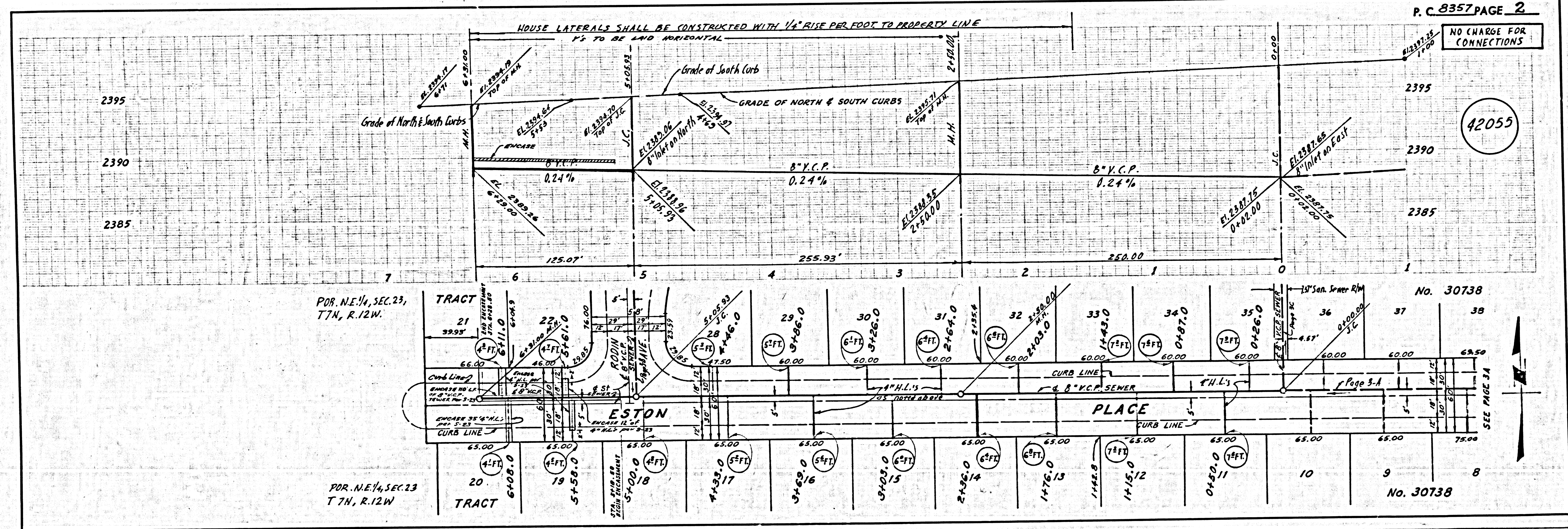
FOR LEGEND SEE PLAN NO. S-1

NOTE:
 GRADES TO WHICH THIS IMPROVEMENT IS TO BE CONSTRUCTED ARE SHOWN ON PLANS AND PROFILES. GRADE POINTS FOR TOP OF CURBS, CENTER LINE OF STREETS, OR CENTER LINE OF ALLEYS ARE SHOWN BY CIRCLES ON PROFILES. AT ALL POINTS BETWEEN DESIGNATED POINTS THE GRADE SHALL BE ESTABLISHED AS TO CONFORM TO A STRAIGHT LINE DRAWN BETWEEN SAID DESIGNATED POINTS. ELEVATIONS ARE IN FEET ABOVE U.S.C. & G.S. SEA LEVEL DATUM OF 1929.
 THIS DRAWING AND THE DATA THEREON ARE HEREBY MADE A PART OF THE SPECIFICATIONS.
 CONSTRUCTION SHALL BE CONDUCTED ACCORDING TO THE STANDARD SPECIFICATIONS FOR PUBLIC WORKS AND THE COUNTY ENGINEER'S SPECIAL SPECIFICATIONS FOR THE CONSTRUCTION OF SANITARY SEWERS. APPROVED APRIL 2, 1970 AND SHALL BE PROSECUTED UNDER THE PROVISIONS OF THE COUNTY ENGINEER'S SPECIAL SPECIFICATIONS. THE CONTRACTOR MUST OBTAIN A PERMIT TO DIG IN THE COUNTY STREETS FROM THE L.A. COUNTY ROAD DEPT., DISTRICT OFFICE NO. 11, 12121 E. VALLE BLVD., LOS ANGELES, CALIFORNIA. AND PAY A FEE TO THE COUNTY ENGINEER, ROOM 330, COUNTY ENGINEERING BUILDING, 130 WEST SECOND STREET, LOS ANGELES, CALIFORNIA. THE CONTRACTOR SHALL BE RESPONSIBLE FOR THE COST OF CONSTRUCTION INSPECTION AND RECORD PLANS.
 APPROVAL OF THIS PLAN BY THE COUNTY OF LOS ANGELES DOES NOT CONSTITUTE A REPRESENTATION AS TO THE ACCURACY OF THE LOCATION OR OF THE EXISTENCE OR NON-EXISTENCE OF ANY UNDERGROUND UTILITY PIPE, OR STRUCTURE WITHIN THE LIMITS OF THE PROJECT. THIS NOTE APPLIES TO ALL WORK DONE IN A STATE HIGHWAY. A PERMIT MUST BE OBTAINED FROM THE STATE OF CALIFORNIA, DIVISION OF HIGHWAYS, 120 SOUTH SPRING STREET, LOS ANGELES, CALIFORNIA.

COUNTY OF LOS ANGELES, CALIFORNIA
 JOHN A. LAMBIE, COUNTY ENGINEER J. D. PARKHURST, CHIEF ENGINEER
 CO. JAN 1970 1/11
 APPROVED BY: [Signature] CHIEF ENGINEER

APPROVED BY: [Signature] REGIONAL ENGINEER
 CHECKED BY: [Signature] 7-20-70
 REG. C.E. No. 16742

42054
 J.N. 0250.02



P.C. 8357 PAGE 2

NO CHARGE FOR CONNECTIONS

42055

No. 30738

No. 30738

