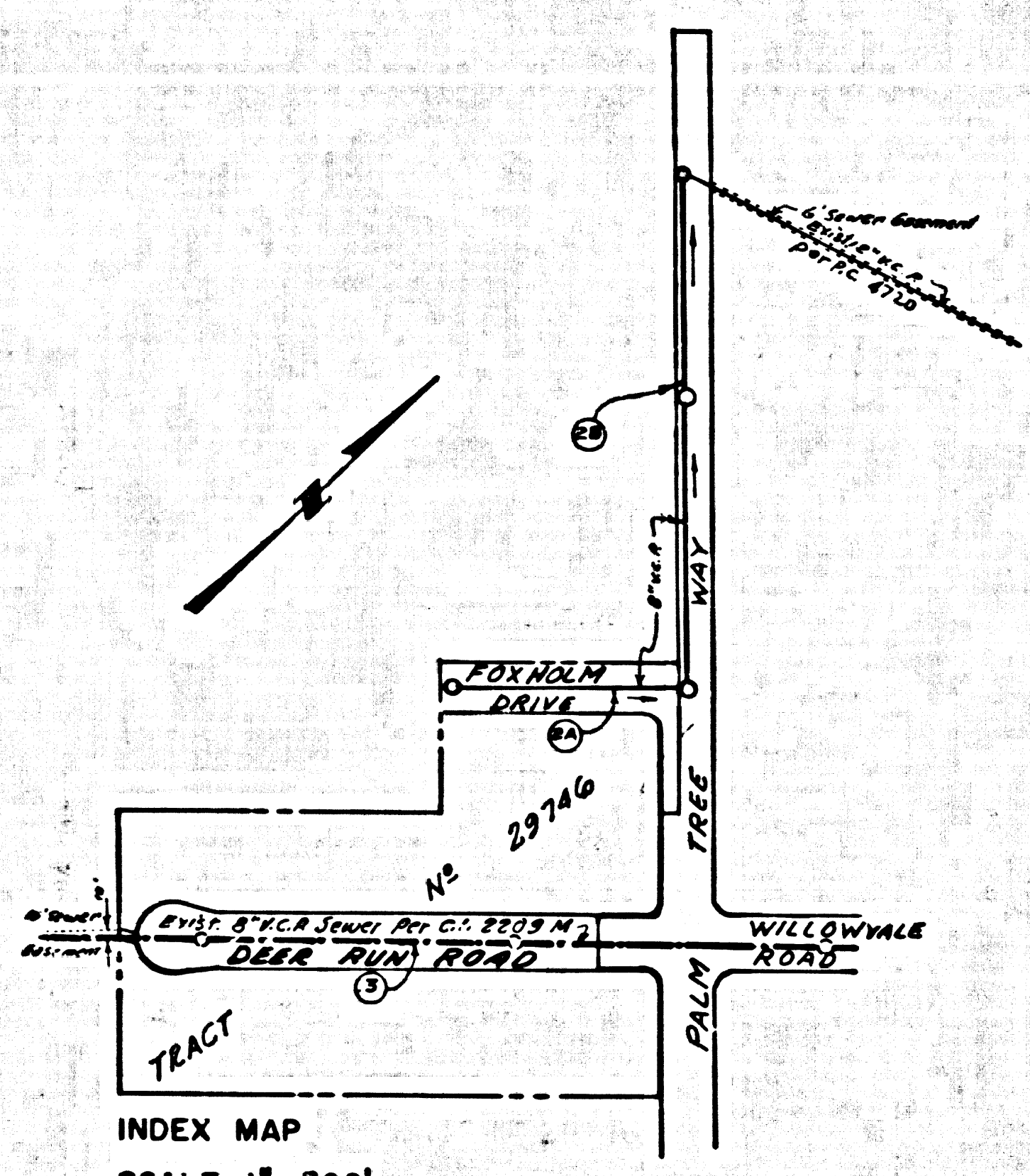


B.M. BL 348 ELEV. 2686.353
 RDBM 789 171 W of B.C.R. @ S.W. cor.
 of Beachside Dr & 10th St. W 1874 S.
 77.11 W of 8th.
 PALMDALE QUAD. 1965



PALMDALE BLDG. DIST. NO. 81

PROFILE, ALIGNMENT AND GRADE OF
 SANITARY SEWERS PAGE 1
 CONSTRUCTED IN

TRACT No 29746
 PRIVATE CONTRACT NO. 8361

W.S. 64
 2 SHEETS; 3 PAGES
 SCALE: VERT. 1" = 4' NOVEMBER, 1969
 HORIZ. 1" = 40'
 PREPARED IN THE OFFICES OF
 STEELE, SPINDLER, & ASSOCIATES
 13047 VENTURA BLVD., STUDIO CITY, CALIF.
 BY: *Richard K. Spence*
 REG. C. E. NO. 13194

- NOTE:
- HOUSE LATERALS TO BE CONSTRUCTED WITH INVERTS AT PROPERTY LINE 4 FEET BELOW CURB GRADE—SHOUP-AS-FOR-ED.
 - PROVIDE STAKES ON THE PROPERTY LINE OR PROPERTY LINES PRODUCED AT RIGHT ANGLES TO THE SEWER LINE AT THE CENTER LINE OF EACH MANHOLE.
 - NO REPRESENTATIVE OF THE COUNTY ENGINEER WILL SURVEY OR LAY OUT ANY PORTION OF THE WORK.
 - THE PRIVATE ENGINEER SHALL FURNISH THE COUNTY ENGINEER WITH GRADE SHEETS AND STATIONING FOR ALL HOUSE LATERALS AND "T" OR "Y" BRANCHES AND SHALL PROVIDE STAKES FOR THEM AT THEIR PROPER LOCATIONS WITH STATIONING PLAINLY MARKED. ALL HOUSE LATERALS SHALL BE CONSTRUCTED IN A STRAIGHT ALIGNMENT AT RIGHT ANGLES FROM THE MAIN LINE SEWER EXCEPT AS SHOWN ON THE PLANS. HOUSE LATERALS FROM CHIMNEYS SHALL NOT HAVE AN ANGLE OF LESS THAN 45° WITH THE MAIN LINE SEWER. ANY CHANGE IN ALIGNMENT SHALL BE REQUESTED IN WRITING BY THE PRIVATE ENGINEER.
 - THE PRIVATE ENGINEER SHALL FURNISH THE HOUSE LATERAL DEPTH AT THE PROPERTY LINE BELOW THE TOP OF CURB ELEVATION FOR EACH HOUSE LATERAL ON THE GRADE SHEET.
 - NO REVISIONS SHALL BE MADE IN THESE PLANS WITHOUT THE APPROVAL OF THE COUNTY ENGINEER.
 - THE CONTRACTOR SHALL NOTIFY THE CONSTRUCTION DIVISION BY TELEPHONE, MADISON 9-4747, EXT. 81581, AT LEAST TWENTY-FOUR HOURS BEFORE STARTING ANY WORK UNDER THIS CONTRACT.
 - ALL STRUCTURES SHALL BE EITHER BRICK MANHOLES PER S. 3 OR PRECAST CONCRETE MANHOLES PER S. 3 OR S. 4, EXCEPT AS NOTED.
 - "T" OR "Y" BRANCHES MAY BE USED FOR CONNECTIONS TO MAINLINE SEWERS EXCEPT AS NOTED.
 - MANHOLES PER S. 3 IN UNIMPROVED AREAS OF 12" TO 18" IN DIAMETER ABOVE FINISHED GRADE.
 - USE EXTRA STRENGTH PIPE. ALL PIPE IS STANDARD DEPTH EXCEPT AS NOTED.
 - VITRIFIED CLAY PIPE JOINTS SHALL BE TYPE "B", "C", OR "D" PER STANDARD SPECIFICATIONS SECTION 306-2.
 - IF A POWER POLE IS WITHIN THREE FEET OF THE SEWER, THE SEWER SHALL BE ENCASED, PER S. 28, TWO FEET ON EACH SIDE FROM THE POINT OF INTERFERENCE.
 - IF DURING THE COURSE OF CONSTRUCTION IT IS DETERMINED THAT THERE IS LESS THAN FOUR FEET OF COVER OVER THE TOP OF A MAIN LINE OR HOUSE LATERAL V.C.P. SEWER WHICH IS NOT INDICATED ON THE PLANS, THE PIPE SHALL BE ENCASED PER S. 28, FOUR FEET MINIMUM APPROVED BY THE COUNTY ENGINEER.
 - ENSURE ALL TRENCHES WITHIN PAVED AREAS TO MEET L.A. COUNTY ROAD DEPT. OR CALIFORNIA STATE HIGHWAY REQUIREMENTS IN ACCORDANCE WITH PERMITS.
 - SEWERS TO BE TESTED FOR LEAKAGE PER SECTION 306-2.3.7 OF THE STANDARD SPECIFICATIONS.
 - REFER TO SECTION 7-18.4.1 OF THE STANDARD SPECIFICATIONS, REGARDING SAFETY ORDERS.
 - ALL JOINTS BETWEEN CAST IRON PIPE AND VITRIFIED CLAY PIPE SHALL BE MADE WITH A RUBBER SLEEVE JOINT, TYPE "C" OR "D", WITH GASKETS IF NECESSARY PER STANDARD SPECIFICATIONS, SECTION 306-2.

THE FOLLOWING LATEST REVISED STANDARD PLANS ON FILE IN THE OFFICE OF THE COUNTY ENGINEER SHALL APPLY IN THE CONSTRUCTION OF THIS PROJECT:

SECTION	MINIMUM PUBLIC SAFETY REQUIREMENTS	8-1
	BRICK MANHOLE	8-2
	NON-MANHOLED PRECAST CONCRETE MANHOLE	8-3
	REINFORCED PRECAST CONCRETE MANHOLE	8-4
	MANHOLE FRAME AND COVER	8-5
	STANDARD MANHOLE STEP	8-17
	BEDDING FOR SEWER PIPE	8-20
	GRADING AND ENCASUREMENT	8-23
	WYE ON THE SUPPORT	8-24
	ALLOWABLE TRENCH WIDTHS	8-25

County Sanitation Districts shall be notified in writing of the following so that they may be notified of the location of the structure within the limits of the project. This notice shall be filed with the County Engineer's Office.

NO CONNECTIONS FOR THE DISPOSAL OF INDUSTRIAL WASTEWATER TO BE MADE TO SEWERS SHOWN ON THESE DRAWINGS WITHOUT WRITTEN PERMISSION FROM THE CHIEF ENGINEER AND GENERAL MANAGER OF THE COUNTY SANITATION DISTRICTS.

NOTE: GRADES TO WHICH THE IMPROVEMENT IS TO BE CONSTRUCTED ARE SHOWN ON PLANS AND PROFILES. GRADE POINTS FOR TOP OF CURB, CENTER LINE OF STREET, OR CENTER LINE OF ALLEY ARE SHOWN BY CIRCLES ON PROFILES. AT ALL POINTS BETWEEN INDICATED POINTS THE GRADE SHALL BE ESTABLISHED SO AS TO CONFORM TO A STRAIGHT LINE DRAWN BETWEEN SAID DESIGNATED POINTS. ELEVATIONS ARE IN FEET ABOVE U.S.C. & G.S. SEA LEVEL DATUM OF 1929.

WORK SHALL BE CONSTRUCTED ACCORDING TO THE STANDARD SPECIFICATIONS FOR PUBLIC WORKS CONSTRUCTION AND SPECIAL PROVISIONS FOR THE CONSTRUCTION OF SANITARY SEWERS DATED JAN 2, 1965, AS REVISED, AND SHALL BE PROSECUTED CHIEF IN THE PRESENCE OF THE COUNTY ENGINEER.

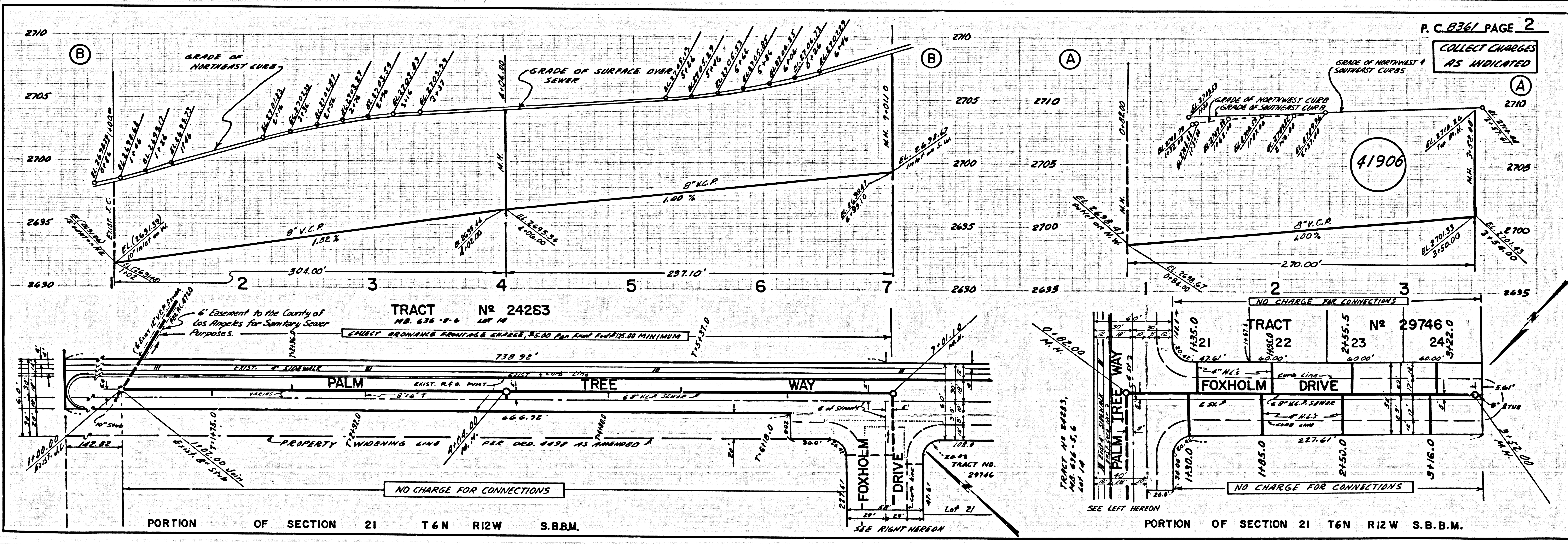
BEFORE WORK CAN BE STARTED, THE CONTRACTOR MUST OBTAIN A PERMIT TO EXCAVATE IN COUNTY STREETS FROM THE L.A. COUNTY ROAD DEPT., DISTRICT OFFICE NO. 3, AND PAY A FEE TO THE COUNTY ENGINEER, ROOM 329, COUNTY ENGINEERING BUILDING, THE WEST SECOND STREET OFFICE BUILDING, 1200 WEST SECOND STREET, LOS ANGELES, CALIFORNIA, 90012 TO COVER THE COST OF CONSTRUCTION INSPECTION AND RECORD PLANS.

APPROVAL OF THIS PLAN BY THE COUNTY OF LOS ANGELES DOES NOT CONSTITUTE A REPRESENTATION AS TO THE ACCURACY OF THE LOCATION OF OR THE EXISTENCE OR NON-EXISTENCE OF ANY UNDERGROUND UTILITY PIPE, OR STRUCTURE WITHIN THE LIMITS OF THE PROJECT. THIS NOTE APPLIES TO ALL PAGES.

IF WORK IS TO BE DONE IN A STATE HIGHWAY, A PERMIT MUST BE OBTAINED FROM THE STATE OF CALIFORNIA, DIVISION OF HIGHWAYS, 120 SOUTH BRIDGE STREET, LOS ANGELES, CALIFORNIA.

COUNTY OF LOS ANGELES, CALIFORNIA
 JOHN A. LAMBE, COUNTY ENGINEER J. D. PARKHURST, CHIEF ENGINEER
 APPROVED BY: *Richard K. Spence* 11/18/69 APPROVED BY: *J. D. Parkhurst*
 REGIONAL ENGINEER (S.A.T.) OFFICE ENGINEER
 CHECKED BY: *Richard K. Spence*
 REG. C. E. NO. 16742
 (41905)
 J.N. 0250.02

COLLECT CHARGES AS INDICATED



NO CHARGE FOR CONNECTIONS

