

B.M. BY 7555 ELEV. 927.991  
 R.D. B.M. TAG N/W CORNER BRIDGE  
 OVER CREEK THROUGH GOLF COURSE  
 55 FT. N 80.00 FT. S AGOURA ROAD  
 AND LINDERO CANYON ROAD  
 MALIBU QUAD. 19.72

DOUBLE SCALE  
 CALABASAS BLDG. DIST. NO. 9.1

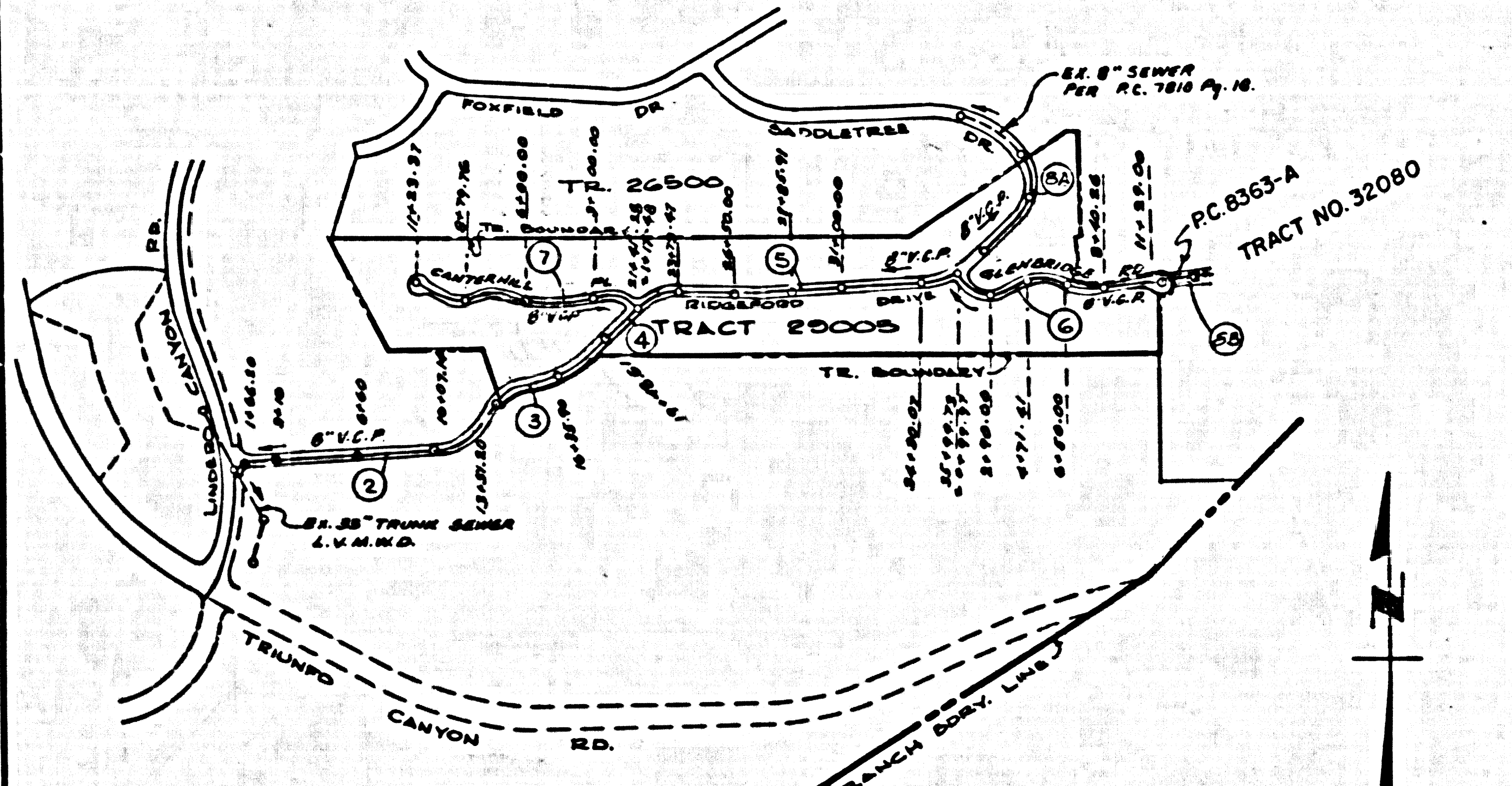
PROFILE, ALIGNMENT AND GRADE OF  
 SANITARY SEWERS PAGE 1  
 TO BE CONSTRUCTED IN

TRACT NO. 29005 and  
 TRACT NO. 32080 (Lots 183)  
 PRIVATE CONTRACT NO. 8363  
 PRIVATE CONTRACT NO. 8363-A  
 W.S. 93 (SEE PG. 8B)

4 SHEETS; 8 PAGES  
 SCALE: VERT. 1"=6' OCT. 1971  
 HORIZ. 1"=40'  
 PREPARED IN THE OFFICES OF  
 MCINTIRE & QUIROS INC.  
 32125 W. LINDERO CANYON RD. WESTLAKE VILLAGE, CALIF.  
 BY: George Jorgensen REG. C. E. NO. 15810

20. FULL COMPLIANCE WITH SECTION 306.1(B) OF THE SPECIAL PROVISIONS WILL BE REQUIRED FOR BACKFILL IN STREETS. CERTIFICATION OF BACKFILL COMPACTION AND SAND EQUIVALENTS BY A QUALIFIED REGISTERED TESTING LABORATORY SHALL BE PROVIDED BY THE PERMITTEE PRIOR TO THE ISSUANCE OF A CERTIFICATE OF FINAL ACCEPTANCE.

21. Indicate H.L.'S to be constructed with Y's flat and 1/4" rise per foot to property line.



Revision No. 2 Mar. 30, 1978  
 Revised page 8 to reflect sewer extension on Glenridge Road, revised index map on sheet 1 to reflect same.  
 Approved: [Signature] 17722  
 Regional Engineer R.C.E. No.

Revision No. 1 Nov. 30, 1976  
 Revised page 1, to reflect ORD.; STD's and Specifications Changes; Changed Change Notes, Pages 4, 5.  
 Approved: [Signature] 17722  
 Regional Engineer R.C.E. No.

- HOUSE LATERALS TO BE CONSTRUCTED WITH INVERTS AT PROPERTY LINE 6 FEET BELOW CURB GRADE EXCEPT AS NOTED.
- PROVIDE STAKES ON THE PROPERTY LINE OR PROPERTY LINES PRODUCED AT RIGHT ANGLES TO THE SEWER LINE AT THE CENTER LINE OF EACH MANHOLE.
- NO REPRESENTATIVE OF THE COUNTY ENGINEER WILL SURVEY OR LAY OUT ANY PORTION OF THE WORK.
- THE PRIVATE ENGINEER SHALL FURNISH THE COUNTY ENGINEER WITH GRADE SHEETS AND STATIONING FOR ALL HOUSE LATERALS AND "T" OR "Y" BRANCHES AND SHALL PROVIDE STAKES FOR THEM AT THESE PROPOSED LOCATIONS WITH STATIONING PLAINLY MARKED. ALL HOUSE LATERALS SHALL BE CONSTRUCTED IN A STRAIGHT ALIGNMENT AT RIGHT ANGLES FROM THE MAIN LINE SEWER EXCEPT AS SHOWN ON THE PLANS. HOUSE LATERALS FROM CHIMNEYS SHALL NOT HAVE AN ANGLE OF LESS THAN 45° WITH THE MAIN LINE SEWER. ANY CHANGE IN ALIGNMENT SHALL BE REQUESTED BY WRITING BY THE PRIVATE ENGINEER.
- THE PRIVATE ENGINEER SHALL FURNISH THE HOUSE LATERAL DEPTH AT THE PROPERTY LINE BELOW THE TOP OF CURB ELEVATION FOR EACH HOUSE LATERAL ON THE GRADE SHEET.
- NO REVISIONS SHALL BE MADE IN THESE PLANS WITHOUT THE APPROVAL OF THE COUNTY ENGINEER.
- THE CONTRACTOR SHALL NOTIFY THE COUNTY ENGINEER BY TELEPHONE, 213-976-7123, AT LEAST TWENTY-FOUR HOURS BEFORE STARTING ANY WORK UNDER THIS CONTRACT.
- ALL STRUCTURES SHALL BE EITHER BRICK MANHOLES PER S-5 OR PRECAST CONCRETE MANHOLES PER S-5 OR S-4, EXCEPT AS NOTED.
- "T" OR "Y" BRANCHES MAY BE USED FOR CONNECTIONS TO MAINLINE SEWERS EXCEPT AS NOTED.
- MANHOLE TOPS IN UNIMPROVED RIGHTS OF WAY TO BE 6 INCHES ABOVE FINISHED GRADE.
- USE EXTRA STRENGTH PIPE ALL PIPE IS STANDARD DEPTH EXCEPT AS NOTED.
- VERTIFIED CLAY PIPE JOINTS SHALL BE TYPE "T", "T", OR "T" PER STANDARD SPECIFICATIONS SECTION 502.2.
- IF A POWER POLE IS WITHIN THREE FEET OF THE SEWER, THE SEWER SHALL BE ENCASED, PER S-23, CLASS II THROUGH CLASS III PER THE POINT OF INTERFERENCE.
- IF DURING THE COURSE OF CONSTRUCTION IT IS DETERMINED THAT THERE IS LESS THAN FOUR FEET OF COVER OVER THE TOP OF A MAIN LINE OR HOUSE LATERAL V.C.P. SEWER WHICH IS NOT INDICATED ON THE PLANS, THE PIPE SHALL BE ENCASED PER S-23, CLASS II UNLESS OTHERWISE APPROVED BY THE COUNTY ENGINEER.
- RESURFACE ALL TRENCHES WITHIN PAVED AREAS TO MEET L.A. COUNTY ROAD DEPT. OR CALIFORNIA STATE HIGHWAY REQUIREMENTS IN ACCORDANCE WITH PERMITS.
- SEWERS TO BE AS NEAR APPROXIMATE TRENCH FOR LEAKAGE PER SECTION 306.1(B) OF THE STANDARD SPECIFICATIONS AS POSSIBLE.
- SEWER TO BE AS NEAR APPROXIMATE TRENCH FOR LEAKAGE PER SECTION 306.1(B) OF THE STANDARD SPECIFICATIONS AS POSSIBLE.
- ALL JOINTS BETWEEN CAST IRON PIPE AND VITRIFIED CLAY PIPE SHALL BE MADE WITH A RUBBER SLEEVE JOINT, TYPE "C" OR "B".
- IF THE METHOD IS NECESSARY TO MEET THE STANDARD SPECIFICATIONS SECTION 502.2 BY THE COUNTY ENGINEER, THE CONTRACTOR SHALL BE RESPONSIBLE FOR OBTAINING THE STATE OF CALIFORNIA DEPARTMENT OF INDUSTRIAL SAFETY. THE FOLLOWING LATEST REVISED STANDARD PLANS ON FILE IN THE OFFICE OF THE COUNTY ENGINEER SHALL APPLY IN THE CONSTRUCTION OF THIS PROJECT.

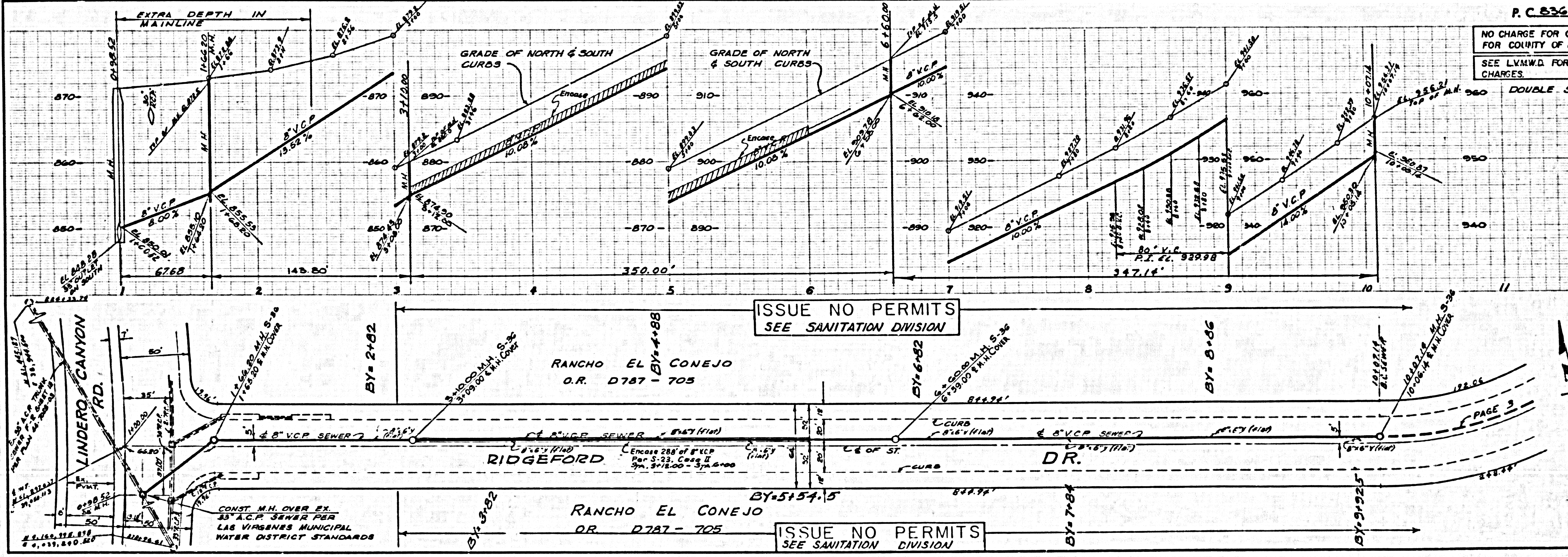
LEGEND

MINIMUM PUBLIC SANITARY REQUIREMENTS	S-2
BRICK MANHOLE	S-5
NON-REINFORCED PRECAST CONCRETE MANHOLE	S-5B
MANHOLE FRAMES AND COVERS	S-5B
STANDARD MANHOLE STEP	S-17
BIDDING FOR SEWER PIPE	S-29
CHANGING AND ENCASEMENT	S-28
WYE ON THE SUPPORT	S-36
ALLOWABLE TRENCH WIDTHS	S-38

NOTE: GRADES TO WHICH THIS IMPROVEMENT IS TO BE CONSTRUCTED ARE SHOWN ON PLANS AND PROFILE. GRADE POINTS FOR TOP OF CURBS, CENTER LINE OF STREETS, OR CENTER LINE OF ALLEYS ARE SHOWN BY CHECKER OR PRODUCE. IF ALL POINTS BETWEEN DESIGNATED POINTS THE GRADE SHALL BE ESTABLISHED SO AS TO CONFORM TO A STRAIGHT LINE BETWEEN SAID DESIGNATED POINTS. ELEVATIONS ARE IN FEET ABOVE U.S.C. & G.S. SEA LEVEL DATUM OF 1929. WORK SHALL BE CONSTRUCTED ACCORDING TO THE STANDARD SPECIFICATIONS FOR PUBLIC WORKS CONSTRUCTION AND SPECIAL PROVISIONS FOR THE CONSTRUCTION OF SANITARY SEWERS DATED 1/1/78 AS REVISED, AND SHALL BE PROVIDED ONLY IN THE PRESENCE OF THE COUNTY ENGINEER. BEFORE WORK CAN BE STARTED, THE CONTRACTOR MUST OBTAIN A PERMIT TO EXCAVATE IN COUNTY STREETS FROM THE L. A. COUNTY ROAD DEPT., DISTRICT OFFICE NO. 3, AND PAY A FEE TO THE COUNTY ENGINEER. AT THE MALIBU REGIONAL OFFICE, SUFFICIENT TO COVER THE COST OF CONSTRUCTION INSPECTION AND RECORD PLANS. APPROVAL OF THIS PLAN BY THE COUNTY OF LOS ANGELES DOES NOT CONSTITUTE A REPRESENTATION AS TO THE ACCURACY OF THE LOCATION OF OR THE EXISTENCE OR NON-EXISTENCE OF ANY UNDERGROUND UTILITY PIPE, OR STRUCTURE WITHIN THE LIMITS OF THIS PROJECT. THIS NOTE APPLIES TO ALL PAGES. IF WORK IS TO BE DONE IN A STATE HIGHWAY, A PERMIT MUST BE OBTAINED FROM THE STATE OF CALIFORNIA, DIVISION OF HIGHWAYS, 126 SOUTH BRIDGE STREET, LOS ANGELES, CALIFORNIA.

COUNTY OF LOS ANGELES, CALIFORNIA  
 HARVEY T. BRANDT, COUNTY ENGINEER  
 APPROVED BY: [Signature] 19/10/71 REGIONAL ENGINEER  
 CHECKED BY: [Signature] 19/19/71 DATE  
 REG. C.E. NO. 17722  
 LAS VIRGENES MUNICIPAL WATER DISTRICT  
 APPROVED BY: [Signature] 10/20/71 GEN. MGR. & CHIEF ENGINEER  
 DATE 10/20/71  
 APPROVED BY: [Signature] GEN. MGR. & CHIEF ENGINEER  
 JULY 7, 1978

COLLECT CHARGES AS INDICATED

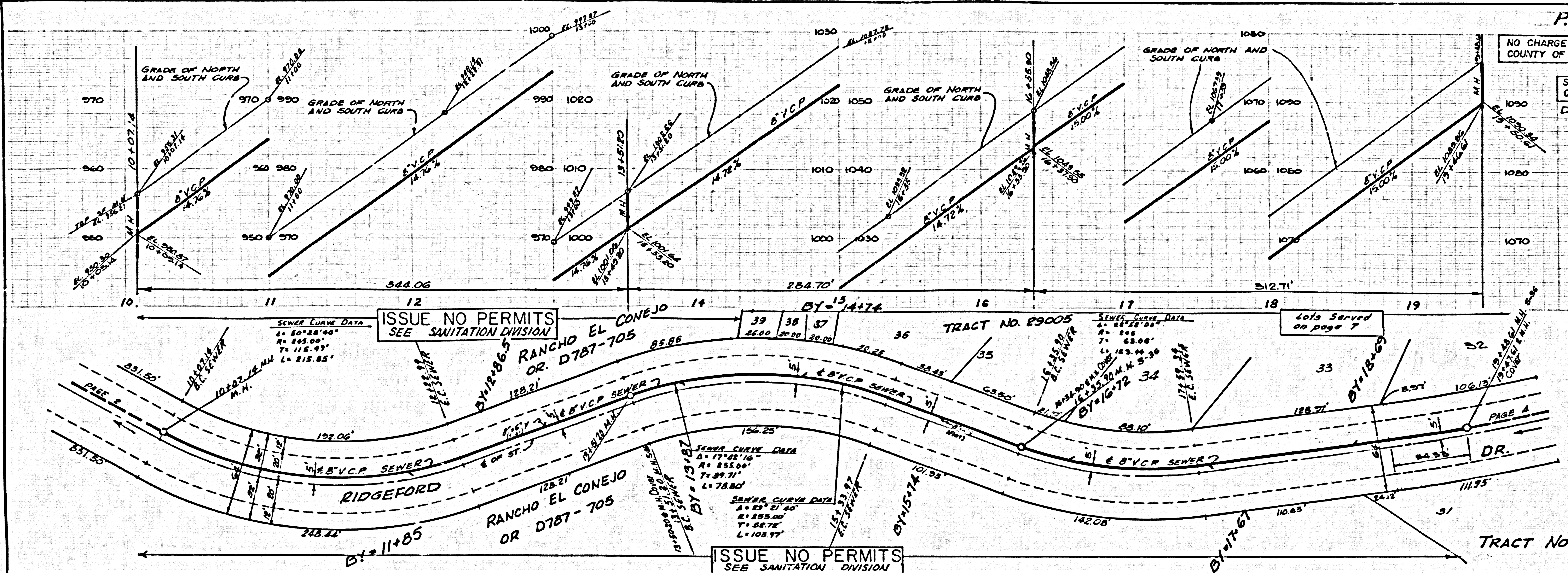


NO CHARGE FOR CONNECTION FOR COUNTY OF LOS ANGELES  
 SEE LVM.W.D. FOR CONNECTION CHARGES.

46934

ISSUE NO PERMITS SEE SANITATION DIVISION

ISSUE NO PERMITS SEE SANITATION DIVISION

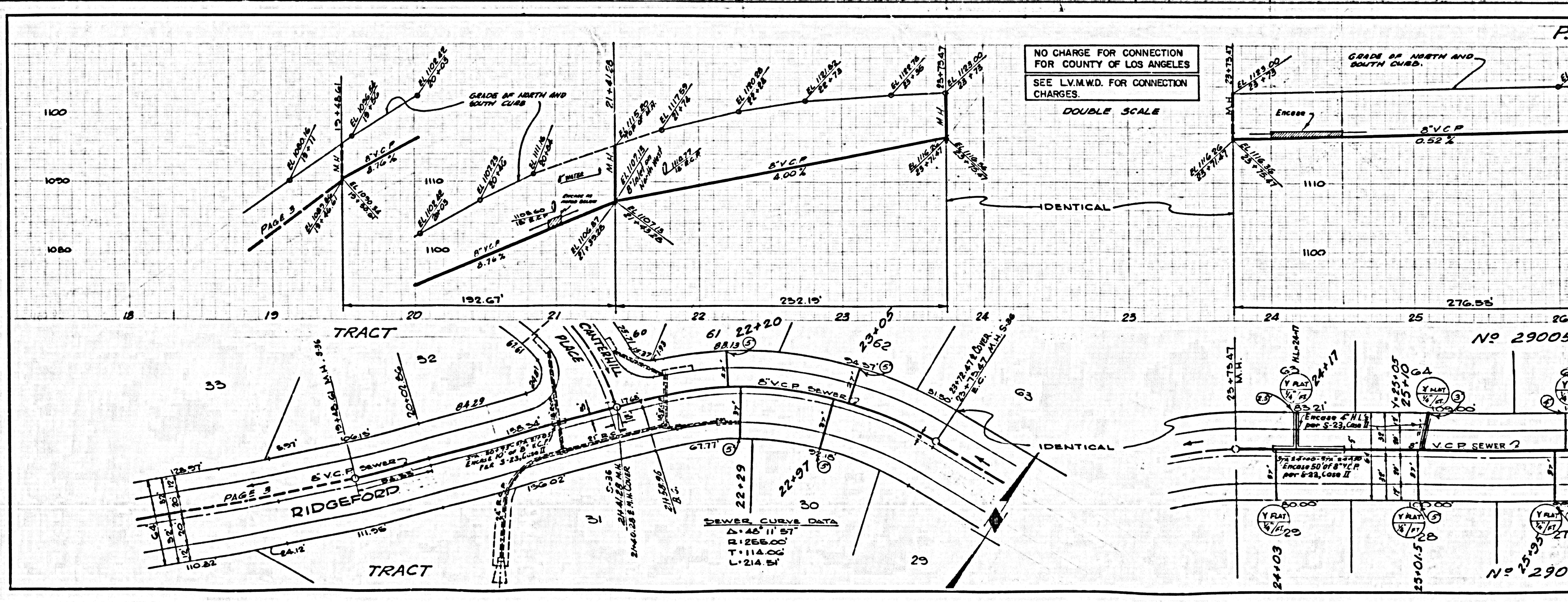


NO CHARGE CONNECTIONS FOR COUNTY OF LOS ANGELES

SEE L.V.M.W.D. FOR CONNECTIONS CHARGES

DOUBLE SCALE

45935

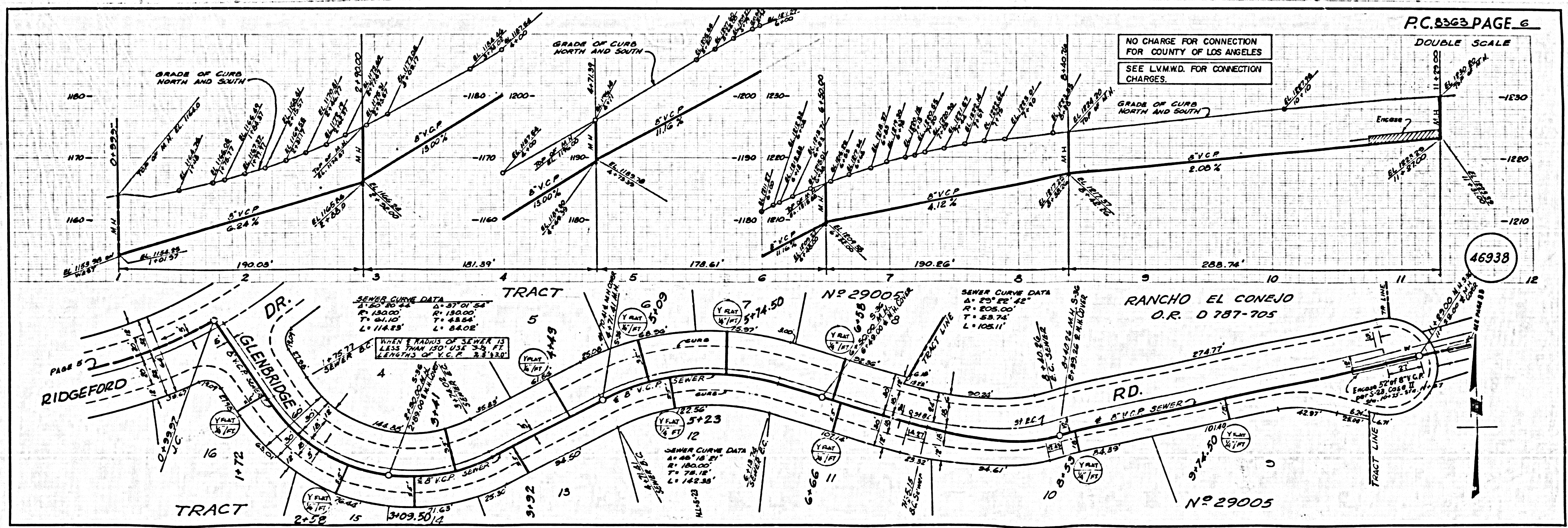
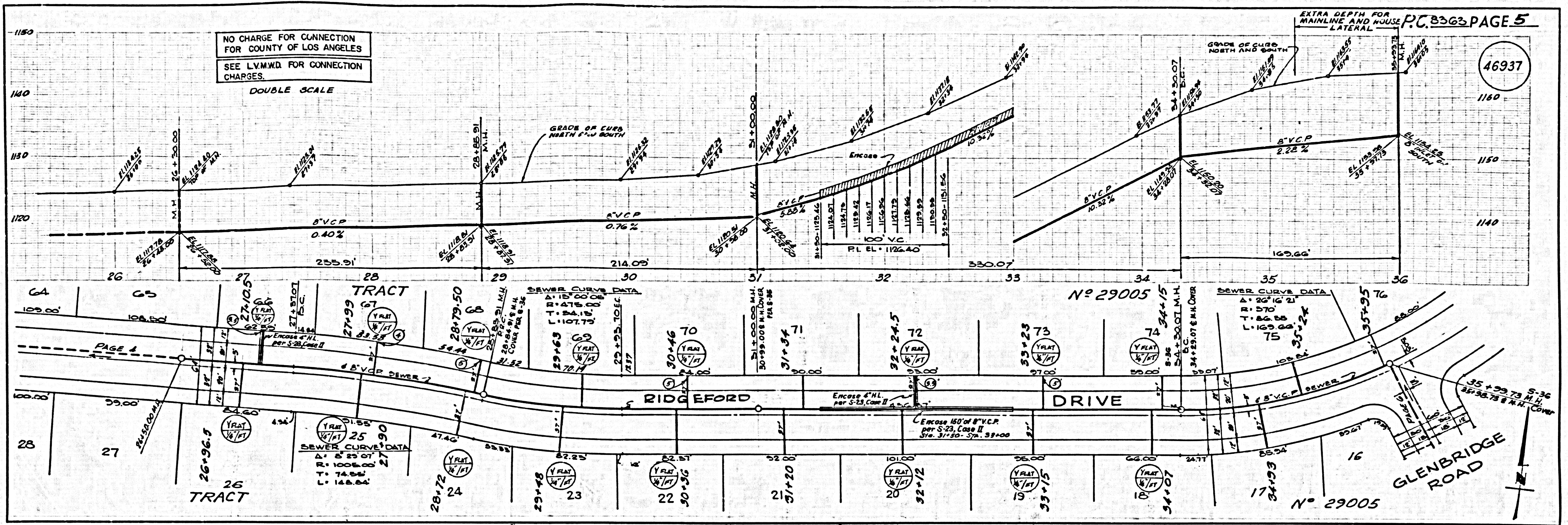


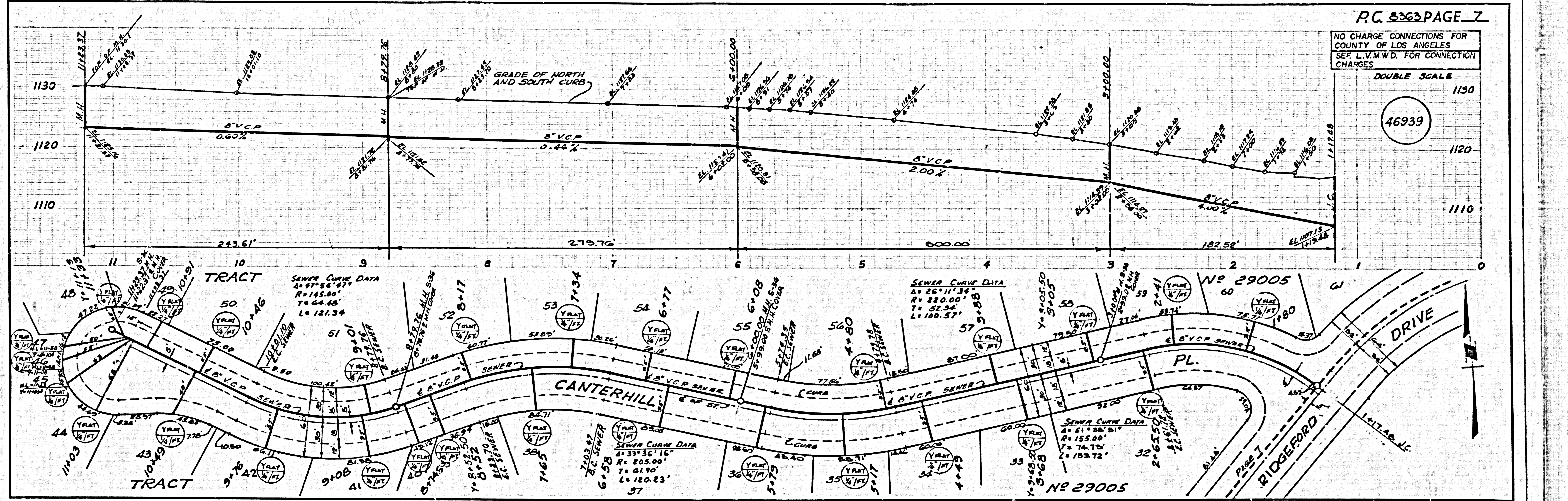
NO CHARGE FOR CONNECTION FOR COUNTY OF LOS ANGELES

SEE L.V.M.W.D. FOR CONNECTION CHARGES.

DOUBLE SCALE

46936





TRACT NO. 32080, LOTS 1 & 3  
P.C. 8363-A

