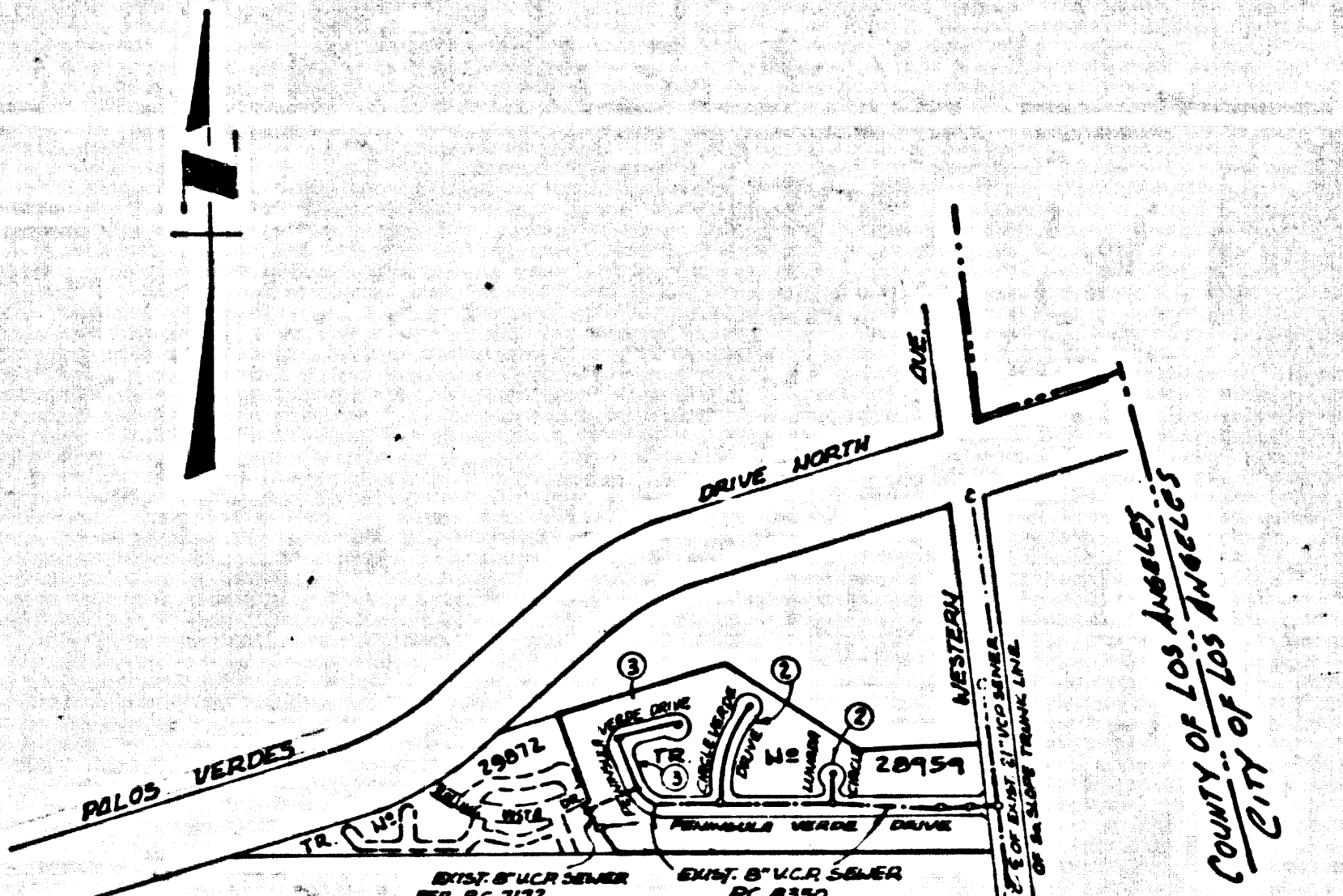


B.M. BY 5951 ELEV. 524.933
 F.D. RD. MON. IN WELL 5' DOWN @ DRIVE NEAR P.I.
 OF CURVE ON CREST OF HILL PALOS VERDES DR.
 N.E. 5' S. OF N.E. EDGE OF S.D. DRIVE - 0.4 MILES W. OF
 WESTERN AVE.
 PALOS VERDES - QUAD. 19 65



No connections for the disposal of industrial water shall be made to sewers shown on these plans without written permission from the Chief Engineer and General Manager of the County Sanitation Division.

County Sanitation Districts shall be notified prior to the following so that required permits can be made (Phone 622-6097)

Acceptance of the project.

INDEX MAP
 TRACT NO. 28959
 P.C. 8364
 SCALE: 1"=600'

NOTE: LOTS 1, 20, 35, 37, 48, 49 & 54, 60
 RELIEVED BY LATERALS CONSTRUCTED
 BY P.C. 8350.

DOUBLE SCALE
 LOMITA BLDG. DIST. NO. 12

PROFILE, ALIGNMENT AND GRADE OF
 SANITARY SEWERS P.C. 8364
 TO BE CONSTRUCTED IN PAGE 1

TRACT NO. 28959
 PRIVATE CONTRACT NO. 8364

W.S. 28
 2 SHEETS; 3 PAGES
 SCALE: VERT. 1"=8' SEPTEMBER, 1969
 HORIZ. 1"=80'

PREPARED IN THE OFFICES OF
 JENNINGS, SCOTT & ENGINEERING COMPANY
 1100 56 BEVERLY DR. LOS ANGELES, CALIF.
 BY: [Signature] REG. NO. 11556

- NOTES:
- HOUSE LATERALS TO BE CONSTRUCTED WITH INVERTS AT PROPERTY LINE & FEET BELOW CURB GRADE EXCEPT AS NOTED.
 - PROVIDE STAKES ON THE PROPERTY LINE OR PROPERTY LINES PRODUCED AT RIGHT ANGLES TO THE SEWER LINE AT THE CENTER LINE OF EACH MANHOLE.
 - NO REPRESENTATIVE OF THE COUNTY ENGINEER WILL SURVEY OR LAY OUT ANY PORTION OF THE WORK.
 - THE PRIVATE ENGINEER SHALL FURNISH THE COUNTY ENGINEER WITH GRADE SHEETS AND STATIONING FOR ALL HOUSE LATERALS AND "T" OR "Y" BRANCHES AND SHALL PROVIDE STAKES FOR THEM AT THEIR PROPER LOCATIONS WITH STATIONING PLAINLY MARKED. ALL HOUSE LATERALS SHALL BE CONSTRUCTED IN A STRAIGHT ALIGNMENT AT RIGHT ANGLES FROM THE MAIN LINE SEWER EXCEPT AS SHOWN ON THE PLANS. HOUSE LATERALS FROM CHIMNEYS SHALL NOT HAVE AN ANGLE OF LESS THAN 45° WITH THE MAIN LINE SEWER. ANY CHANGE IN ALIGNMENT SHALL BE REQUESTED BY WRITING BY THE PRIVATE ENGINEER.
 - THE PRIVATE ENGINEER SHALL FURNISH THE HOUSE LATERAL BOPHS AT THE PROPERTY LINE BELOW THE TOP OF CURB ELEVATION FOR EACH HOUSE LATERAL ON THE GRADE SHEET.
 - NO REVISIONS SHALL BE MADE IN THESE PLANS WITHOUT THE APPROVAL OF THE COUNTY ENGINEER.
 - THE CONTRACTOR SHALL NOTIFY THE CONSTRUCTION DIVISION BY TELEPHONE, RAMBON 9-076, EXT. 11581, AT LEAST TWENTY-FOUR HOURS BEFORE STARTING ANY WORK UNDER THIS CONTRACT.
 - ALL STRUCTURES SHALL BE EITHER BRICK MANHOLES PER S-2 OR PRECAST CONCRETE MANHOLES PER S-4 OR S-4, EXCEPT AS NOTED.
 - "T" OR "Y" BRANCHES MAY BE USED FOR CONNECTIONS TO MAINLINE SEWERS EXCEPT AS NOTED.
 - MANHOLE TOPS IN UNIMPROVED RIGHTS OF WAY TO BE SIX INCHES ABOVE FINISHED GRADE.
 - USE EXTRA STRENGTH PIPE. ALL PIPE IS STANDARD DEPTH EXCEPT AS NOTED.
 - VITRIFIED CLAY PIPE JOINTS SHALL BE TYPE "B", "F", OR "G" PER STANDARD SPECIFICATIONS SECTION 286-2.
 - IF A POWER POLE IS WITHIN THREE FEET OF THE SEWER, THE SEWER SHALL BE ENCASED, PER S-25, TWO FEET ON EACH SIDE FROM THE POINT OF INTERFERENCE.
 - IF DURING THE COURSE OF CONSTRUCTION IT IS DETERMINED THAT THERE IS LESS THAN FOUR FEET OF COVER OVER THE TOP OF A MAIN LINE OR HOUSE LATERAL V.C.P. SEWER WHICH IS NOT INDICATED ON THE PLANS, THE PIPE SHALL BE ENCASED PER S-25, UNLESS OTHERWISE APPROVED BY THE COUNTY ENGINEER.
 - RESURFACE ALL TRENCHES WITHIN PAVED AREAS TO MEET L.A. COUNTY ROAD DEPT. OR CALIFORNIA STATE HIGHWAY REQUIREMENTS BY CONFORMANCE WITH PERMITS.
 - SEWERS TO BE TESTED FOR LEAKAGE PER SECTION 286-2.7 OF THE STANDARD SPECIFICATIONS.
 - REFER TO SECTION 7-18.1.1 OF THE STANDARD SPECIFICATIONS, REGARDING SAFETY OUTFITS.
 - ALL JOINTS BETWEEN CAST IRON PIPE AND VITRIFIED CLAY PIPE SHALL BE MADE WITH A RUBBER JOINT TYPE "C" OR "D", WITH GASKETS IF NECESSARY PER STANDARD SPECIFICATIONS, SECTION 286.1.

THE FOLLOWING LATEST SEWERS STANDARD PLANS ON FILE IN THE OFFICE OF THE COUNTY ENGINEER SHALL APPLY IN THE CONSTRUCTION OF THIS PROJECT:

LEAD	5-2
MINIMUM PUBLIC SAFETY REQUIREMENTS	5-2
BRICK MANHOLE	5-2
NON-REINFORCED PRECAST CONCRETE MANHOLE	5-2
REINFORCED PRECAST CONCRETE MANHOLE	5-4
MANHOLE FRAMES AND COVERS	5-13
STANDARD MANHOLE STEP	5-17
BONDING FOR SEWER PIPE	5-21
CAULKING AND ENCASING	5-25
WYE OR TEE SUPPORT	5-26
ALLOWABLE TRENCH WIDTHS	5-28

NOTE: ALLOW NO HOUSE CONNECTIONS UNTIL P.C. 8350 IS COMPLETED.

COLLECT CHARGES AS INDICATED

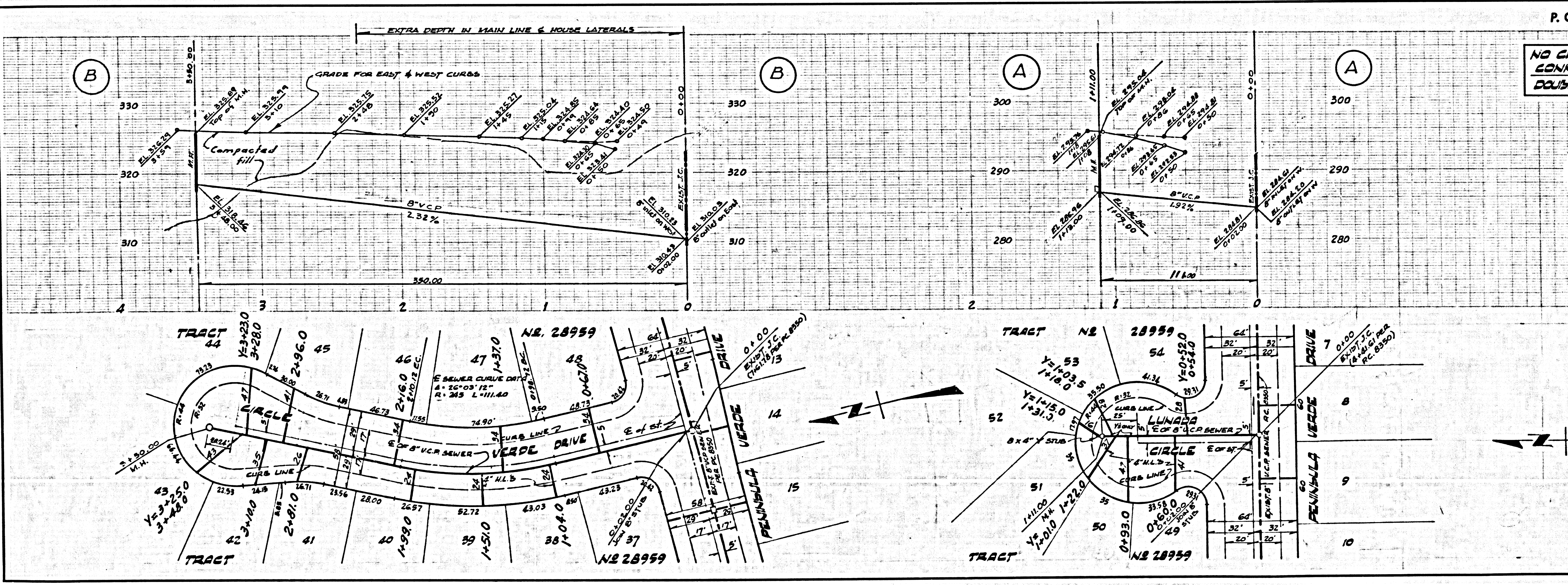
NOTES:
 GRADES TO WHICH THIS IMPROVEMENT IS TO BE CONSTRUCTED ARE SHOWN ON PLANS AND PROFILE. GRADE POINTS FOR TOP OF CURB, CENTER LINE OF STREETS, OR CENTER LINE OF ALLEYS ARE SHOWN BY CIRCLES ON PROFILES. AT ALL POINTS BETWEEN DESIGNATED POINTS THE GRADE SHALL BE ESTABLISHED SO AS TO CONFORM TO A STRAIGHT LINE DRAWN BETWEEN SAID DESIGNATED POINTS. ELEVATIONS ARE IN FEET ABOVE U.S.C. & G.S. SEA LEVEL DATUM OF 1929.
 WORK SHALL BE CONSTRUCTED ACCORDING TO THE STANDARD SPECIFICATIONS FOR PUBLIC WORKS CONSTRUCTION AND SPECIAL PROVISIONS FOR THE CONSTRUCTION OF SANITARY SEWERS WATER AND S. 286, AS REVISED, AND SHALL BE PROSECUTED ONLY IN THE PRESENCE OF THE COUNTY ENGINEER.
 BEFORE WORK CAN BE STARTED, THE CONTRACTOR MUST OBTAIN A PERMIT TO EXCAVATE IN COUNTY STREETS FROM THE L.A. COUNTY ROAD DEPT., DISTRICT OFFICE NO. 1, 1200 N. GARDEN ST., LOS ANGELES, CALIF. 90012, AND PAY A FEE TO THE COUNTY ENGINEER, ROOM 316, COUNTY ENGINEERING BUILDING, 128 WEST SECOND STREET OR, PHOENIX PERMITS: PHOENIX 1711-1712, REGIONAL OFFICE, SUFFICIENT TO COVER THE COST OF CONSTRUCTION INSPECTION AND RECORD PLANS.
 APPROVAL OF THIS PLAN BY THE COUNTY OF LOS ANGELES DOES NOT CONSTITUTE A REPRESENTATION AS TO THE ACCURACY OF THE LOCATION OF OR THE EXISTENCE OR NON-EXISTENCE OF ANY UNDERGROUND UTILITY PIPE, OR STRUCTURE WITHIN THE LIMITS OF THE PROJECT. THIS NOTE APPLIES TO ALL PAGES.
 IF WORK IS TO BE DONE IN A STATE HIGHWAY, A PERMIT MUST BE OBTAINED FROM THE STATE OF CALIFORNIA, DIVISION OF HIGHWAYS, 120 SOUTH SPRING STREET, LOS ANGELES, CALIFORNIA.

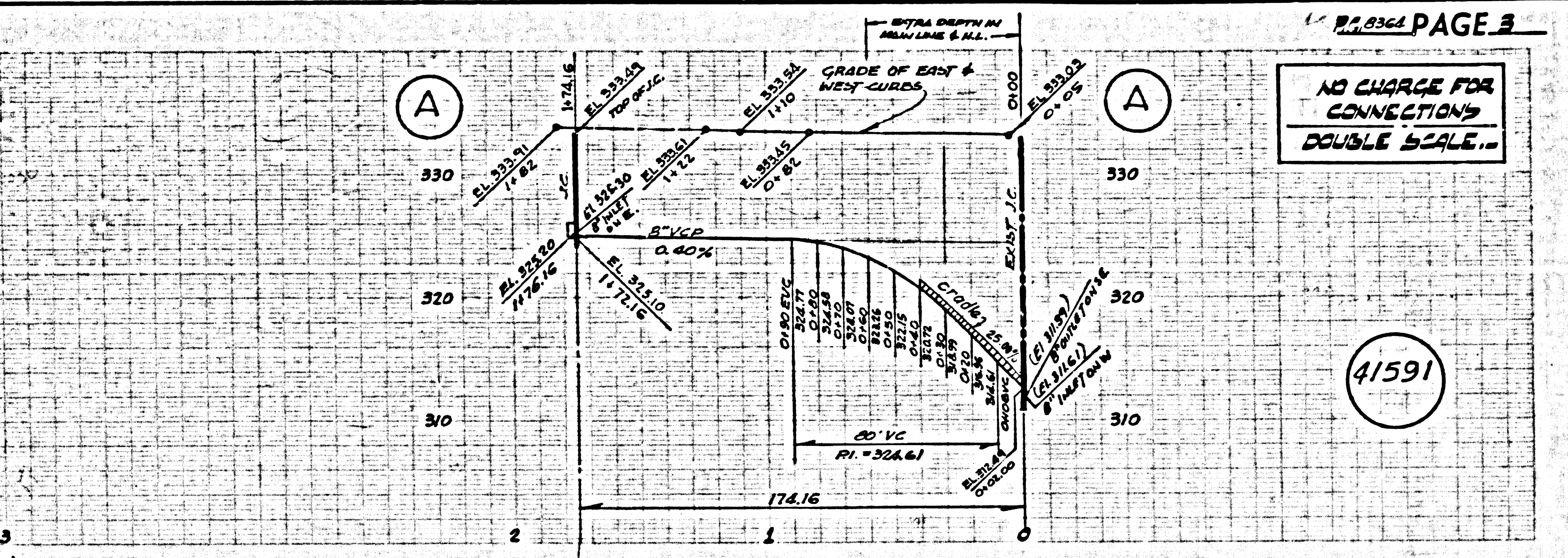
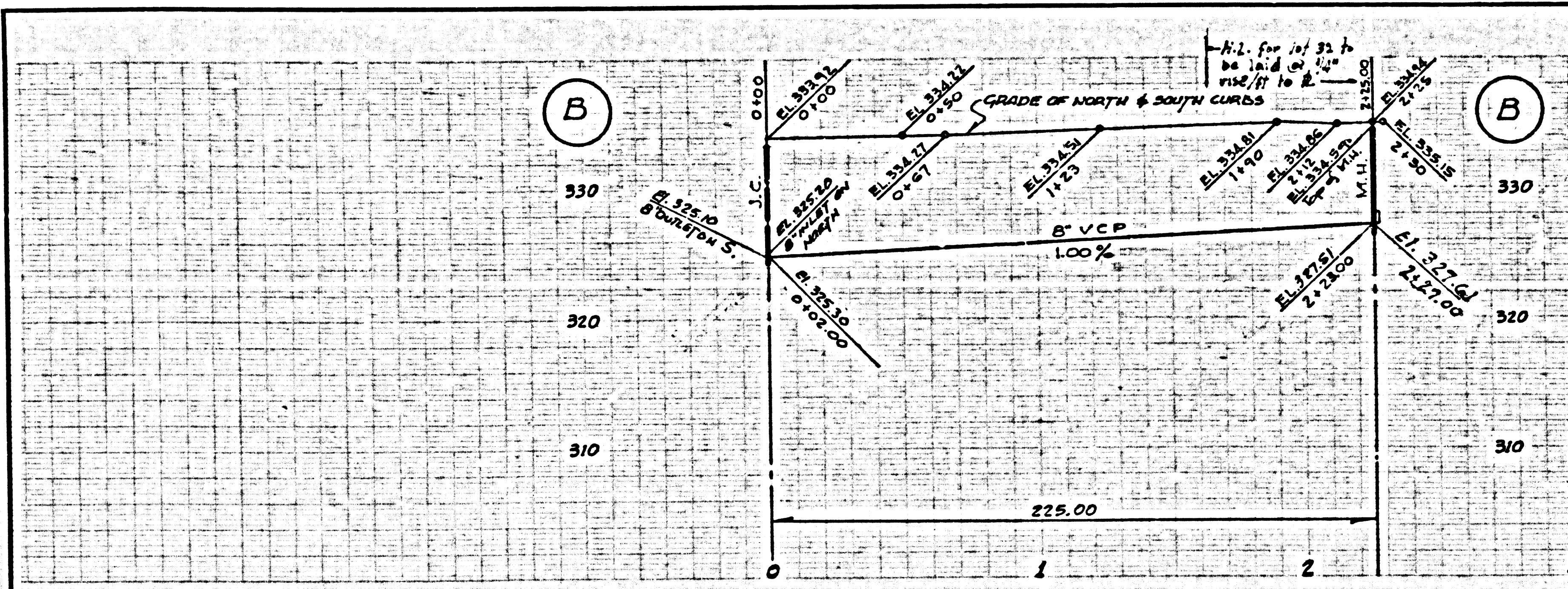
COUNTY OF LOS ANGELES, CALIFORNIA
 JOHN A. LAMBIE, COUNTY ENGINEER J. D. PARKHURST, CHIEF ENGINEER

APPROVED BY: [Signature] 10/23/69 APPROVED BY: [Signature] 11/24/69
 REGIONAL ENGINEER B.A.T.B. OFFICE ENGINEER

CHECKED BY: [Signature] 11/24/69
 B.A.T.B. REG. NO. 10653

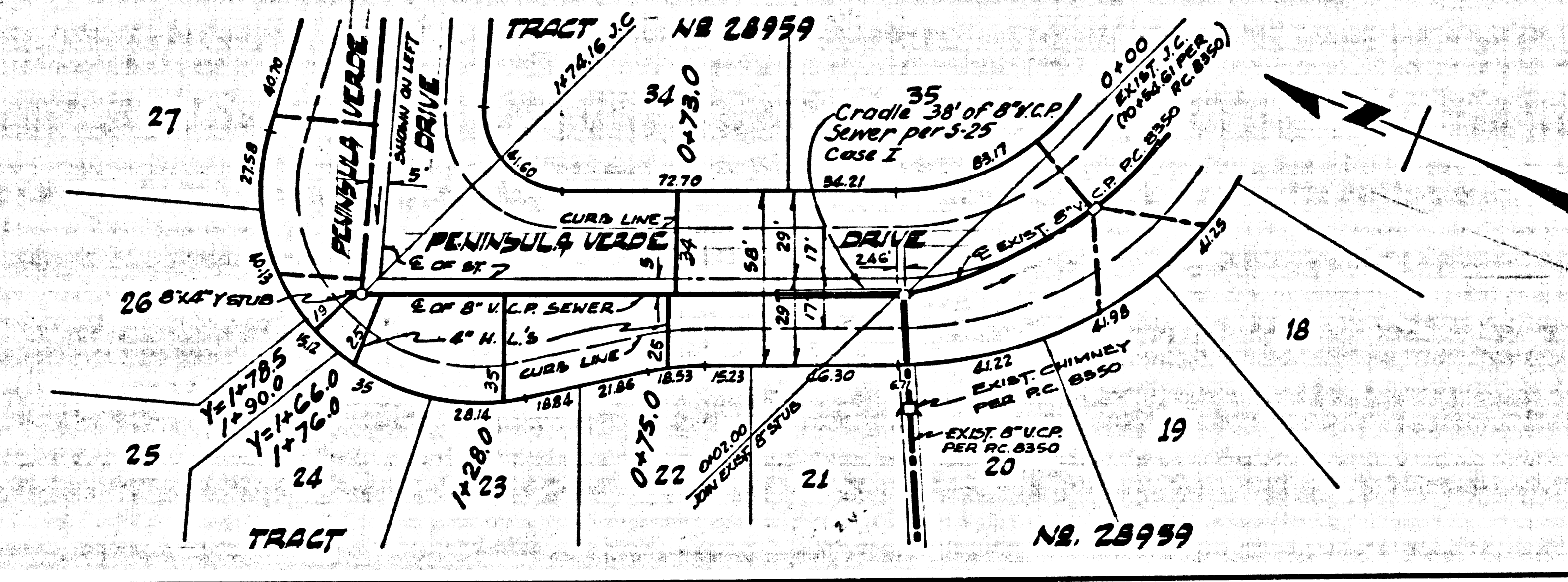
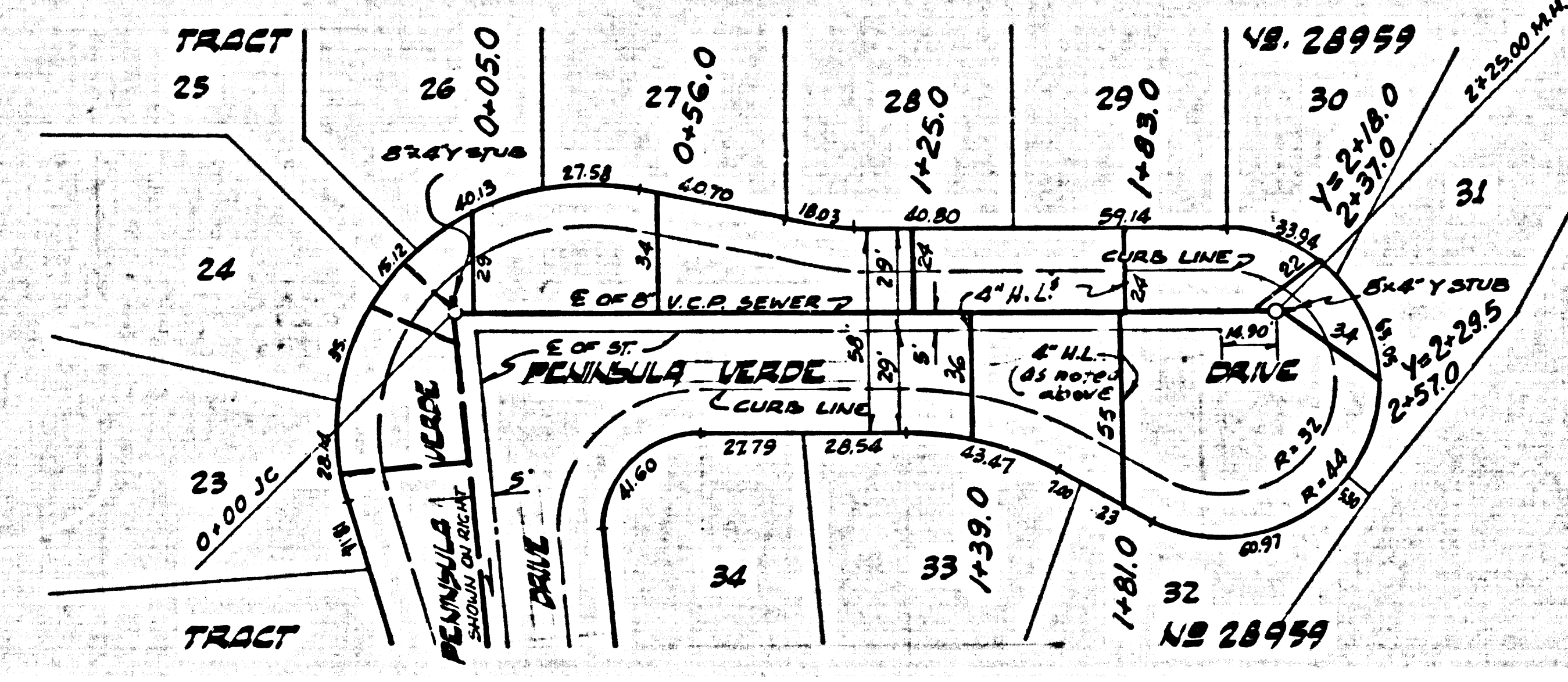
REVISION: RELOCATED SEWER ON CIRCLE VERDE DRIVE TO WEST SIDE
 REVISED GRADES ACCORDINGLY.
 APPROVED: [Signature] 11/18/69





NO CHARGE FOR CONNECTIONS
DOUBLE SCALE

41591



PAGE