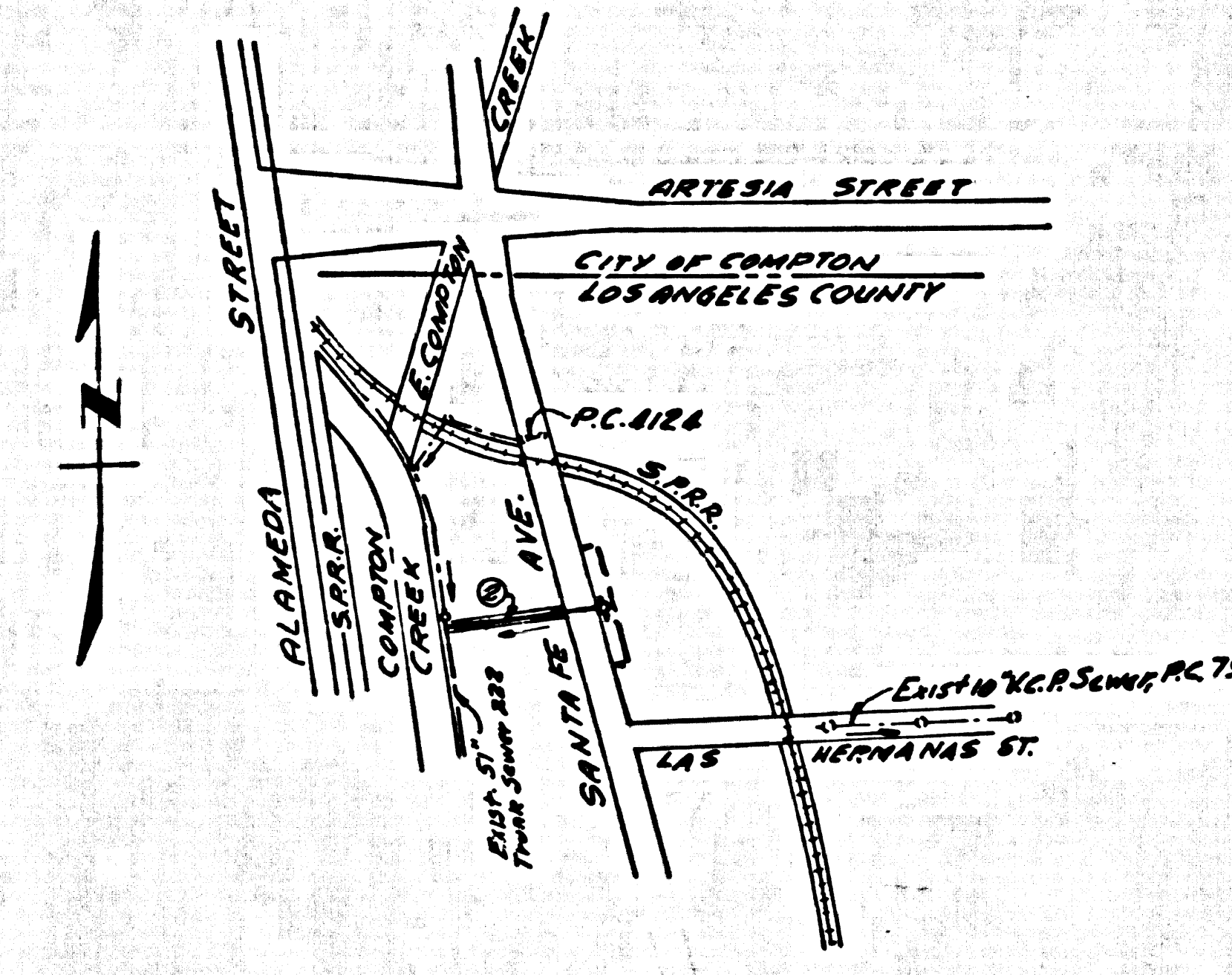


B.M. BY 2379 ELEV. 62.969
 P.C. BR. CAP 5" SINGLE JOINT W/NG-
 WALL SW. COR. BRIDGE AT 74' ON
 S. SIDE OF ST. OVER COMPTON CREEK
 28' W. 160' S. ARTESIA BLVD. (B.M. 433)
 BASELINE QUAD. 19 65



INDEX MAP
 P.C. 8367
 SCALE: 1" = 600'

THE FOLLOWING LATEST REVISED STANDARD PLANS ON FILE IN THE OFFICE OF THE COUNTY ENGINEER SHALL APPLY IN THE CONSTRUCTION OF THIS PROJECT:

LESSONS	3-1
MINIMUM PUBLIC UTILITY REQUIREMENTS	3-2
SEWER MANHOLE	3-3
MANHOLE FRAMES AND COVERS	3-4
STANDARD MANHOLE TYPES	3-5
STANDARD PIPE JOINTS	3-6
STANDARD PIPE JOINTS	3-7
STANDARD PIPE JOINTS	3-8
STANDARD PIPE JOINTS	3-9
STANDARD PIPE JOINTS	3-10
STANDARD PIPE JOINTS	3-11
STANDARD PIPE JOINTS	3-12
STANDARD PIPE JOINTS	3-13
STANDARD PIPE JOINTS	3-14
STANDARD PIPE JOINTS	3-15
STANDARD PIPE JOINTS	3-16
STANDARD PIPE JOINTS	3-17
STANDARD PIPE JOINTS	3-18
STANDARD PIPE JOINTS	3-19
STANDARD PIPE JOINTS	3-20
STANDARD PIPE JOINTS	3-21
STANDARD PIPE JOINTS	3-22
STANDARD PIPE JOINTS	3-23
STANDARD PIPE JOINTS	3-24
STANDARD PIPE JOINTS	3-25
STANDARD PIPE JOINTS	3-26
STANDARD PIPE JOINTS	3-27
STANDARD PIPE JOINTS	3-28
STANDARD PIPE JOINTS	3-29
STANDARD PIPE JOINTS	3-30
STANDARD PIPE JOINTS	3-31
STANDARD PIPE JOINTS	3-32
STANDARD PIPE JOINTS	3-33
STANDARD PIPE JOINTS	3-34
STANDARD PIPE JOINTS	3-35
STANDARD PIPE JOINTS	3-36
STANDARD PIPE JOINTS	3-37
STANDARD PIPE JOINTS	3-38
STANDARD PIPE JOINTS	3-39
STANDARD PIPE JOINTS	3-40
STANDARD PIPE JOINTS	3-41
STANDARD PIPE JOINTS	3-42
STANDARD PIPE JOINTS	3-43
STANDARD PIPE JOINTS	3-44
STANDARD PIPE JOINTS	3-45
STANDARD PIPE JOINTS	3-46
STANDARD PIPE JOINTS	3-47
STANDARD PIPE JOINTS	3-48
STANDARD PIPE JOINTS	3-49
STANDARD PIPE JOINTS	3-50
STANDARD PIPE JOINTS	3-51
STANDARD PIPE JOINTS	3-52
STANDARD PIPE JOINTS	3-53
STANDARD PIPE JOINTS	3-54
STANDARD PIPE JOINTS	3-55
STANDARD PIPE JOINTS	3-56
STANDARD PIPE JOINTS	3-57
STANDARD PIPE JOINTS	3-58
STANDARD PIPE JOINTS	3-59
STANDARD PIPE JOINTS	3-60
STANDARD PIPE JOINTS	3-61
STANDARD PIPE JOINTS	3-62
STANDARD PIPE JOINTS	3-63
STANDARD PIPE JOINTS	3-64
STANDARD PIPE JOINTS	3-65
STANDARD PIPE JOINTS	3-66
STANDARD PIPE JOINTS	3-67
STANDARD PIPE JOINTS	3-68
STANDARD PIPE JOINTS	3-69
STANDARD PIPE JOINTS	3-70
STANDARD PIPE JOINTS	3-71
STANDARD PIPE JOINTS	3-72
STANDARD PIPE JOINTS	3-73
STANDARD PIPE JOINTS	3-74
STANDARD PIPE JOINTS	3-75
STANDARD PIPE JOINTS	3-76
STANDARD PIPE JOINTS	3-77
STANDARD PIPE JOINTS	3-78
STANDARD PIPE JOINTS	3-79
STANDARD PIPE JOINTS	3-80
STANDARD PIPE JOINTS	3-81
STANDARD PIPE JOINTS	3-82
STANDARD PIPE JOINTS	3-83
STANDARD PIPE JOINTS	3-84
STANDARD PIPE JOINTS	3-85
STANDARD PIPE JOINTS	3-86
STANDARD PIPE JOINTS	3-87
STANDARD PIPE JOINTS	3-88
STANDARD PIPE JOINTS	3-89
STANDARD PIPE JOINTS	3-90
STANDARD PIPE JOINTS	3-91
STANDARD PIPE JOINTS	3-92
STANDARD PIPE JOINTS	3-93
STANDARD PIPE JOINTS	3-94
STANDARD PIPE JOINTS	3-95
STANDARD PIPE JOINTS	3-96
STANDARD PIPE JOINTS	3-97
STANDARD PIPE JOINTS	3-98
STANDARD PIPE JOINTS	3-99
STANDARD PIPE JOINTS	3-100

County Sanitation Districts shall be notified prior to the following no that facilities inspection can be made. (Phone 427-2888 or 604-8097).
 Acceptance of the project.

REVISION: 7-7-70
 CHANGED ALIGNMENT FROM STA. 0+175 TO STA. 2+100.
 BY: *[Signature]*
 APPROVED: *[Signature]* COUNTY ENGINEER
 OFFICE ENGINEER SANITATION DISTRICTS

No exceptions for the disposal of industrial wastes shall be made to those shown on these drawings without written permission from the Chief Engineer and General Manager of the County Sanitation Districts.

DOMINGUEZ BLDG. DIST. NO. 13

- NOTE:
- PROVIDE STAKES ON THE PROPERTY LINE OR PROPERTY LINES PRODUCED AT RIGHT ANGLES TO THE SEWER LINE AT THE CENTER LINE OF EACH MANHOLE.
 - NO REPRESENTATIVE OF THE COUNTY ENGINEER WILL SURVEY OR LAY OUT ANY PORTION OF THE WORK.
 - THE PRIVATE ENGINEER SHALL FURNISH THE COUNTY ENGINEER WITH GRADE SHEETS AND STATIONING FOR ALL HOUSE LATERALS AND "T" BRANCHES AND SHALL PROVIDE STAKES FOR THEM AT THEIR PROPER LOCATIONS WITH STATIONING PLAINLY MARKED. ALL HOUSE LATERALS SHALL BE CONSTRUCTED IN A STRAIGHT ALIGNMENT AT RIGHT ANGLES FROM THE MAIN LINE SEWER EXCEPT AS SHOWN ON THE PLANS. HOUSE LATERALS FROM CHIMNEYS SHALL NOT HAVE AN ANGLE OF LESS THAN 45° WITH THE MAIN LINE SEWER. ANY CHANGE IN ALIGNMENT SHALL BE REQUESTED IN WRITING BY THE PRIVATE ENGINEER.
 - THE PRIVATE ENGINEER SHALL FURNISH THE HOUSE LATERAL DEPTH AT THE PROPERTY LINE BELOW THE TOP OF CURB ELEVATION FOR EACH HOUSE LATERAL ON THE GRADE SHEET.
 - NO REVISIONS SHALL BE MADE IN THESE PLANS WITHOUT THE APPROVAL OF THE COUNTY ENGINEER.
 - THE CONTRACTOR SHALL NOTIFY THE CONSTRUCTION DIVISION BY TELEPHONE, MANSON 5-4707, EXT. 8151, AT LEAST TWENTY-FOUR HOURS BEFORE STARTING ANY WORK UNDER THIS CONTRACT.
 - ALL STRUCTURES SHALL BE EITHER BRICK MANHOLES PER S-8 OR PRECAST CONCRETE MANHOLES PER S-8 OR S-6, EXCEPT AS NOTED.
 - USE STANDARD MANHOLE FRAMES AND COVERS, 23" EXCEPT AS NOTED.
 - MANHOLE TOPS IN UNIMPROVED RIGHTS-OF-WAY TO BE SIX INCHES ABOVE FINISHED GRADE.
 - USE EXTRA STRENGTH PIPE. ALL PIPE IS STANDARD DEPTH EXCEPT AS NOTED.
 - VITRIFIED CLAY PIPE JOINTS SHALL BE TYPE "B", 10" PER STD. SPECS., SEC. 208-B.
 - A POWER POLE IS WITHIN THREE FEET OF THE SEWER. THE SEWER SHALL BE ENCASED, PER S-23, TWO FEET ON EACH SIDE FROM THE POINT OF INTERFERENCE.
 - IF DURING THE COURSE OF CONSTRUCTION IT IS DETERMINED THAT THERE IS LESS THAN FOUR FEET OF COVER OVER THE TOP OF A MAIN LINE OR HOUSE LATERAL V.C.P. SEWER WHICH IS NOT INDICATED ON THE PLANS, THE PIPE SHALL BE ENCASED PER S-23, UNLESS OTHERWISE APPROVED BY THE COUNTY ENGINEER.
 - HOUSE LATERALS TO BE CONSTRUCTED WITH INVERTS AT PROPERTY LINE 4 FEET BELOW CURB GRADE EXCEPT AS NOTED.
 - RESURFACE ALL TRENCHES WITHIN PAVED AREAS TO MEET L.A. COUNTY ROAD DEPT. OR CALIFORNIA STATE HIGHWAY REQUIREMENTS IN ACCORDANCE WITH PERMITS.
 - REQUIRE TO BE VESTED FOR LIABILITIES PER SECTION 306-2.2.7 OF THE STD. SPECS.
 - REFER TO SECTION 7-1.1.1 OF THE STD. SPECS. REGARDING SAFETY ORDNERS.
 - ALL JOINTS BETWEEN CAST IRON PIPE AND VITRIFIED CLAY PIPE SHALL BE MADE WITH A RUBBER SLEEVE JOINT, TYPE "C" OR "D", (WITH BUSHING IF NECESSARY) PER STD. SPECS. 208-B.

NOTE: ISSUE NO PERMITS UNTIL R/W IS RECORDED.

COLLECT CHARGES AS INDICATED

NOTICE TO CONTRACTOR
 The existence and location of any underground utility pipes or structures shown on these plans are obtained by a search of the available records. To the best of my knowledge there are no existing utilities or structures as shown on these plans. The contractor is required to take due precautionary measures to protect the utility lines shown and any other lines not shown on these plans.
[Signature]
 6/1/360

PROFILE ALIGNMENT AND GRADE OF P.C. 8367
 SANITARY SEWERS PAGE 1

TO BE CONSTRUCTED IN
 SEWER RIGHT OF WAY
 BETWEEN SANTA FE AVE & COMPTON CREEK

PRIVATE CONTRACT NO. 8367

W.S. 32
 1 SHEET OF 2 PAGES

SCALE: VERT. 1" = 4'
 HORIZ. 1" = 40'
 SEPTEMBER 1969

PREPARED IN THE OFFICES OF
 E. L. PEARSON & ASSOC.
[Signature]
 REG. C. E. NO. 1260

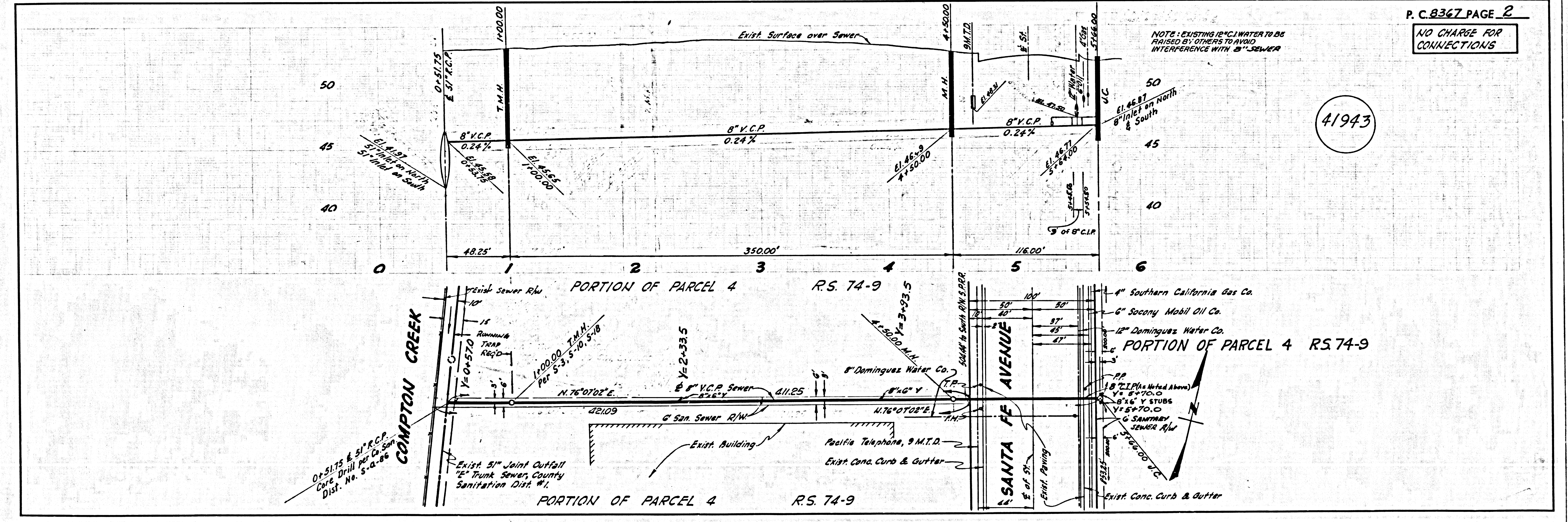
FOR LEGEND SEE PLAN NO. S-1

NOTE:
 GRADES TO WHICH THIS IMPROVEMENT IS TO BE CONSTRUCTED ARE SHOWN ON PLANS AND PROFILE. GRADE POINTS FOR TOP OF CURBS, CENTER LINE OF STREETS, OR CENTER LINE OF ALLEYS ARE SHOWN BY CIRCLES ON PROFILE. AT ALL POINTS BETWEEN DESIGNATED POINTS THE GRADE SHALL BE ESTABLISHED SO AS TO CONFORM TO A STRAIGHT LINE DRAWN BETWEEN SAID DESIGNATED POINTS. ELEVATIONS ARE IN FEET ABOVE U.S.C. & G.S. MEAN SEA LEVEL DATUM OF 1929.
 THIS DRAWING IS THE PROPERTY OF E. L. PEARSON & ASSOC. AND IS NOT TO BE REPRODUCED OR TRANSMITTED IN ANY FORM OR BY ANY MEANS, ELECTRONIC OR MECHANICAL, INCLUDING PHOTOCOPYING, RECORDING, OR BY ANY INFORMATION STORAGE AND RETRIEVAL SYSTEM, WITHOUT THE WRITTEN PERMISSION OF E. L. PEARSON & ASSOC.
 BEFORE WORK CAN BE STARTED, THE CONTRACTOR MUST OBTAIN A PERMIT TO EXCAVATE IN COUNTY STREETS FROM THE L.A. COUNTY ROAD DEPT., DISTRICT OFFICE NO. 1, 3512 S. GARDEN ST., LOS ANGELES, CALIFORNIA, ROOM 330, COUNTY ENGINEERING BUILDING, 100 WEST SECOND STREET, LOS ANGELES, CALIFORNIA, AND PAY A FEE TO THE COUNTY ENGINEER, ROOM 330, COUNTY ENGINEERING BUILDING, 100 WEST SECOND STREET, LOS ANGELES, CALIFORNIA. APPROVAL OF THIS PLAN BY THE COUNTY OF LOS ANGELES, CALIFORNIA, DOES NOT CONSTITUTE A REPRESENTATION AS TO THE ACCURACY OF THE LOCATION OR OF THE EXISTENCE OR NON-EXISTENCE OF ANY UNDERGROUND UTILITY PIPE, OR STRUCTURE WITHIN THE LIMITS OF THIS PROJECT. THIS NOTE APPLIES TO ALL PAGES.
 IF WORK IS TO BE DONE IN A STATE HIGHWAY, A PERMIT MUST BE OBTAINED FROM THE STATE OF CALIFORNIA, DIVISION OF HIGHWAYS, 220 SOUTH SPRING STREET, LOS ANGELES, CALIFORNIA.

COUNTY OF LOS ANGELES, CALIFORNIA
 JOHN A. LAMBIE, COUNTY ENGINEER
 APPROVED BY: *[Signature]*
 J. D. PARKHURST, CHIEF ENGINEER
 APPROVED BY: *[Signature]*

CHECKED BY: *[Signature]* 4/30/70
 REG. C. E. NO. 10653

CHECKED BY: *[Signature]*
 REG. C. E. NO. 41942
 J.N. 0370.10



P. C. 8367 PAGE 2
 NO CHARGE FOR CONNECTIONS

NOTE: EXISTING 12" C.I. WATER TO BE REINFORCED BY OTHERS TO AVOID INTERFERENCE WITH 8" SEWER