

B.M. BY 7537 ELEV. 222.787 (1965 ad.)
 L + Screw N.E. Cor. Catch Basin on S.W.
 cor. Mulholland Dr + Calabasas Rd. 70
 R + 2014' N.E. int. m.e.a. (B.M.)
 QUAD. 19 65

REVISION No. 4
 REVISED PLANS TO REFLECT
 CONDITIONS NEEDED TO COMPLETE
 PROJECT CONSTRUCTION
 APPROVED *Sam H. Miller* R.C.E. NO. 11086
 REGIONAL ENGINEER 11086

THE POLLS WHO LATEST REVISED STANDARD PLANS ON FILE IN THE OFFICE OF THE
 COUNTY ENGINEER SHALL APPLY IN THE CONSTRUCTION OF THIS PROJECT

LEGEND

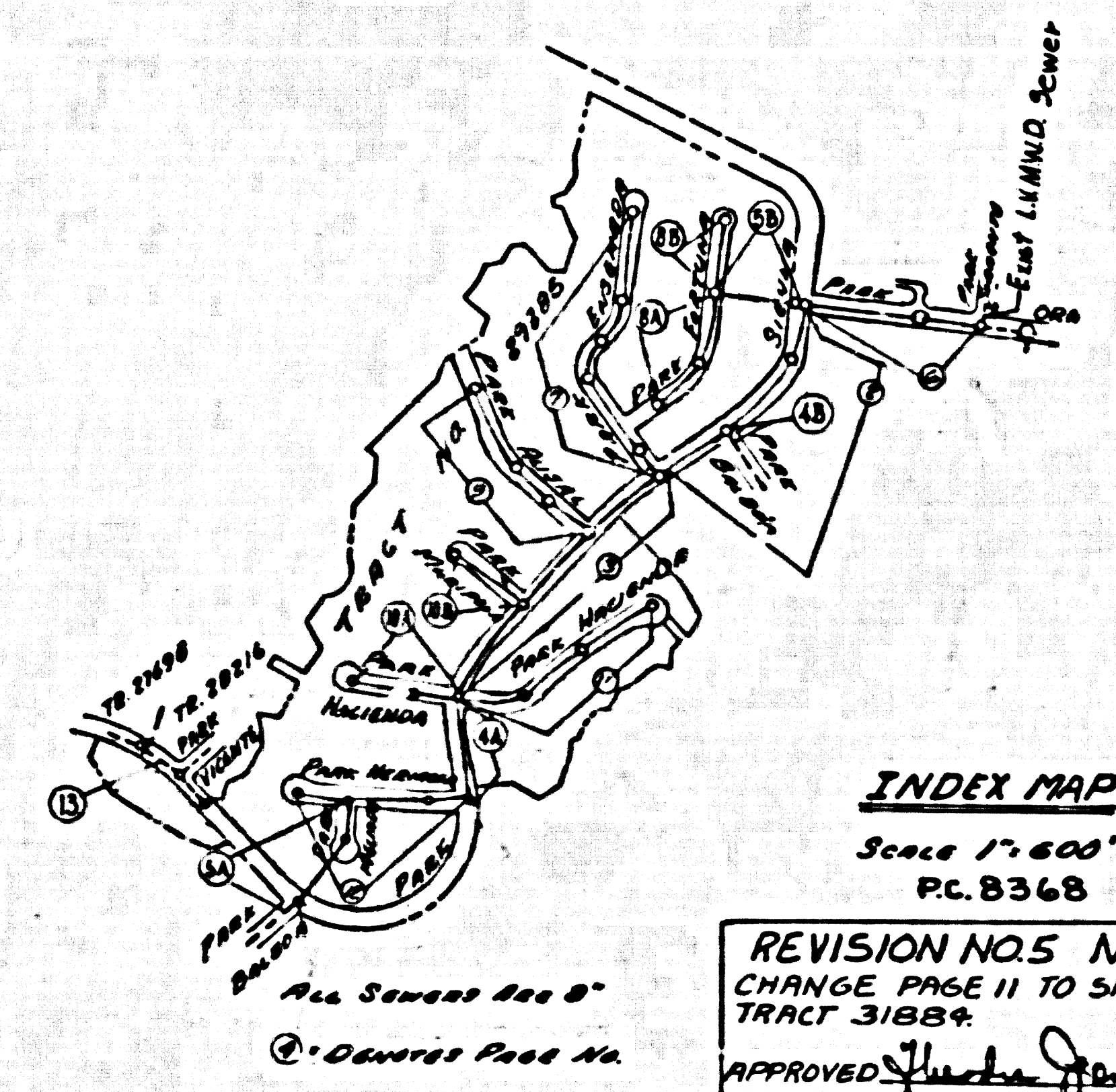
MINIMUM PUBLIC SAFETY REQUIREMENTS	8-1
SEWER MAINS	8-2
MAN-BORED PIPE	8-3
MAN-BORED PIPE (SPECIAL)	8-4
STANDARD MANHOLE	8-5
STANDARD MANHOLE (SPECIAL)	8-6
STANDARD MANHOLE (SPECIAL) WITH	8-7
STANDARD MANHOLE (SPECIAL) WITH	8-8
STANDARD MANHOLE (SPECIAL) WITH	8-9
STANDARD MANHOLE (SPECIAL) WITH	8-10
STANDARD MANHOLE (SPECIAL) WITH	8-11
STANDARD MANHOLE (SPECIAL) WITH	8-12
STANDARD MANHOLE (SPECIAL) WITH	8-13
STANDARD MANHOLE (SPECIAL) WITH	8-14
STANDARD MANHOLE (SPECIAL) WITH	8-15
STANDARD MANHOLE (SPECIAL) WITH	8-16
STANDARD MANHOLE (SPECIAL) WITH	8-17
STANDARD MANHOLE (SPECIAL) WITH	8-18
STANDARD MANHOLE (SPECIAL) WITH	8-19
STANDARD MANHOLE (SPECIAL) WITH	8-20
STANDARD MANHOLE (SPECIAL) WITH	8-21
STANDARD MANHOLE (SPECIAL) WITH	8-22
STANDARD MANHOLE (SPECIAL) WITH	8-23
STANDARD MANHOLE (SPECIAL) WITH	8-24
STANDARD MANHOLE (SPECIAL) WITH	8-25
STANDARD MANHOLE (SPECIAL) WITH	8-26
STANDARD MANHOLE (SPECIAL) WITH	8-27
STANDARD MANHOLE (SPECIAL) WITH	8-28
STANDARD MANHOLE (SPECIAL) WITH	8-29
STANDARD MANHOLE (SPECIAL) WITH	8-30
STANDARD MANHOLE (SPECIAL) WITH	8-31

REVISION No. 3 NOV. 20, 1975
 REVISED PAGE 1 TO REFLECT ORD.,
 STDS., AND SPECIFICATION CHANGES.
 APPROVED *Sam H. Miller* R.C.E. NO. 11086
 REGIONAL ENGINEER 11086

REVISION No. 2 July 23, 1973
 REVISED PROFILE OF SEWER LINE FROM
 STA 1432.57 TO STA 1401.20 PAGE 6.
 APPROVED *Sam H. Miller* R.C.E. NO. 11086
 REGIONAL ENGINEER 11086

REVISION No. 1, JUNE 16, 1970
 REVISE VERTICAL ALIGNMENT OF SEWER
 LINE FROM STA 1438.41 TO 3+98.11, PAGE 5A.
 DELETE NOTE NO. 1
 APPROVED *Sam H. Miller* R.C.E. NO. 11086
 REGIONAL ENGINEER 11086

REVISION No. 5 NOV. 10, 1976
 CHANGE PAGE 11 TO SHOW NEW
 TRACT 3188A.
 APPROVED *Sam H. Miller* R.C.E. NO. 11086
 REGIONAL ENGINEER 11086



DOUBLE SCALE
CALABASAS BLDG. DIST. NO. 9/

PROFILE, ALIGNMENT AND GRADE OF **P.C. 8368**
SANITARY SEWERS PAGE 1
 TO BE CONSTRUCTED IN

TRACT No 29365 & 3188A

PRIVATE CONTRACT NO. 8368

W.S. 60
 7 SHEETS, 13 PAGES
 SCALE: HORIZ. 1" = 40' VERT. 1" = 4'

DATE: MARCH 1970
 PREPARED BY THE OFFICES OF
VUL
 ENGINEERS ARCHITECTS PLANNERS
 2015 Van Nuys Blvd., Van Nuys, California 91411 (213) 991-4400
 BY: *Richard R. Hume*
 REG. C. E. NO. 17061

45,685

FOR LEGEND SEE PLAN NO. S-1

- NOTES:
- PROPOSED STAKES ON THE PROPERTY LINE OR PROPERTY LINES PRODUCED AT RIGHT ANGLES TO THE SEWER LINE AT THE CENTER LINE OF EACH MAINLINE.
 - NO REPRESENTATIVE OF THE COUNTY ENGINEER WILL SURVEY OR LAY OUT ANY PORTION OF THE WORK.
 - THE PRIVATE ENGINEER SHALL FURNISH THE COUNTY ENGINEER WITH GRADE SHEETS AND STATIONINGS FOR ALL HOUSE LATERALS AND 8" R. C. P. BRANCHES AND SHALL PROVIDE STAKES FOR THEM AT THEIR PROPER LOCATIONS WITH STATIONINGS PLAINLY MARKED. ALL HOUSE LATERALS SHALL BE CONSTRUCTED IN A STRAIGHT ALIGNMENT AT RIGHT ANGLES FROM THE MAIN LINE SEWER EXCEPT AS SHOWN ON THE PLANS. HOUSE LATERALS FROM CHIMNEYS SHALL NOT HAVE AN ANGLE OF LESS THAN 45° WITH THE MAIN LINE SEWER. ANY CHANGE IN ALIGNMENT SHALL BE REQUESTED IN WRITING BY THE PRIVATE ENGINEER.
 - THE PRIVATE ENGINEER SHALL FURNISH THE HOUSE LATERAL DEPTH AT THE PROPERTY LINE BELOW THE TOP OF CURB GRADE SHEET FOR EACH HOUSE LATERAL ON THE GRADE SHEET.
 - NO REVISIONS SHALL BE MADE IN THESE PLANS WITHOUT THE APPROVAL OF THE COUNTY ENGINEER.
 - THE CONTRACTOR SHALL NOTIFY THE DISTRICT ENGINEER BY TELEPHONE, (213) 974-7283, AT LEAST TWENTY (20) HOURS BEFORE STATING ANY WORK UNDER THIS CONTRACT.
 - 7" R. C. P. BRANCHES ARE TO BE USED FOR CONNECTIONS TO APPLICABLE SEWER EXCEPT AS NOTED.
 - ALL STRUCTURES SHALL BE BUILT TO THE STANDARD SPECIFICATIONS FOR 8" R. C. P. EXCEPT AS NOTED.
 - MANHOLE TOPS IN UNIMPROVED RIGHTS-OF-WAY TO BE SIX INCHES ABOVE FINISHED GRADE.
 - USE EXTRA STRENGTH PIPE. ALL PIPE IS STANDARD DEPTH EXCEPT AS NOTED.
 - STRENGTH CLASS PIPE SHALL BE TYPE "20", "24" OR "28" PER STANDARD SPECIFICATIONS SECTION 802.01.
 - IF A HOUSE SOLE IS WITHIN THREE FEET OF THE SEWER, THE SEWER SHALL BE ENCASED PER S-25, CASE 2, TWO FEET ON EACH SIDE FROM THE POINT OF INTERFERENCE.
 - IF DURING THE COURSE OF CONSTRUCTION IT IS DETERMINED THAT THERE IS LESS THAN FOUR FEET OF COVER OVER THE TOP OF A MAIN LINE OR HOUSE LATERAL V.C.P. SEWER WHICH IS NOT INDICATED ON THE PLANS, THE PIPE SHALL BE ENCASED PER S-25, CASE 2, UNLESS OTHERWISE APPROVED BY THE COUNTY ENGINEER.
 - HOUSE LATERALS TO BE CONSTRUCTED WITHIN PRIVATE PROPERTY LINE AS NOTED EXCEPT AS NOTED.
 - RESURFACE ALL TRENCHES WITHIN PAVED AREAS TO MEET L.A. COUNTY ROAD DEPT. OR CALIFORNIA STATE HIGHWAY REQUIREMENTS IN ACCORDANCE WITH PERMITS.
 - PROTECT ALL EXISTING UTILITIES FROM DAMAGE PER SECTION 804.1 OF THE STANDARD SPECIFICATIONS.
 - BEFORE THE START OF ANY WORK UNDER THIS CONTRACT THE CONTRACTOR SHALL BE REQUIRED TO OBTAIN A PERMIT TO EXCAVATE FROM THE DISTRICT ENGINEER'S OFFICE. ALL TRENCHES SHALL BE PROTECTED BY THE CONTRACTOR'S OWN MEANS.
 - ALL JOINTS BETWEEN CAST IRON PIPE AND STAINLESS STEEL PIPE SHALL BE MADE WITH RUBBER GASKETS PER SECTION 802.01 OF THE STANDARD SPECIFICATIONS.
 - SEWERAGE SHALL BE CONSTRUCTED TO THE DEPTH INDICATED ON THE PLANS AND TO THE DEPTH INDICATED ON THE GRADE SHEETS. ALL SEWERAGE SHALL BE CONSTRUCTED TO THE DEPTH INDICATED ON THE GRADE SHEETS AND TO THE DEPTH INDICATED ON THE PLANS. ALL SEWERAGE SHALL BE CONSTRUCTED TO THE DEPTH INDICATED ON THE GRADE SHEETS AND TO THE DEPTH INDICATED ON THE PLANS.
 - PROTECT ALL EXISTING UTILITIES FROM DAMAGE PER SECTION 804.1 OF THE STANDARD SPECIFICATIONS.
 - BEFORE THE START OF ANY WORK UNDER THIS CONTRACT THE CONTRACTOR SHALL BE REQUIRED TO OBTAIN A PERMIT TO EXCAVATE FROM THE DISTRICT ENGINEER'S OFFICE. ALL TRENCHES SHALL BE PROTECTED BY THE CONTRACTOR'S OWN MEANS.
 - ALL JOINTS BETWEEN CAST IRON PIPE AND STAINLESS STEEL PIPE SHALL BE MADE WITH RUBBER GASKETS PER SECTION 802.01 OF THE STANDARD SPECIFICATIONS.
 - SEWERAGE SHALL BE CONSTRUCTED TO THE DEPTH INDICATED ON THE PLANS AND TO THE DEPTH INDICATED ON THE GRADE SHEETS. ALL SEWERAGE SHALL BE CONSTRUCTED TO THE DEPTH INDICATED ON THE GRADE SHEETS AND TO THE DEPTH INDICATED ON THE PLANS.

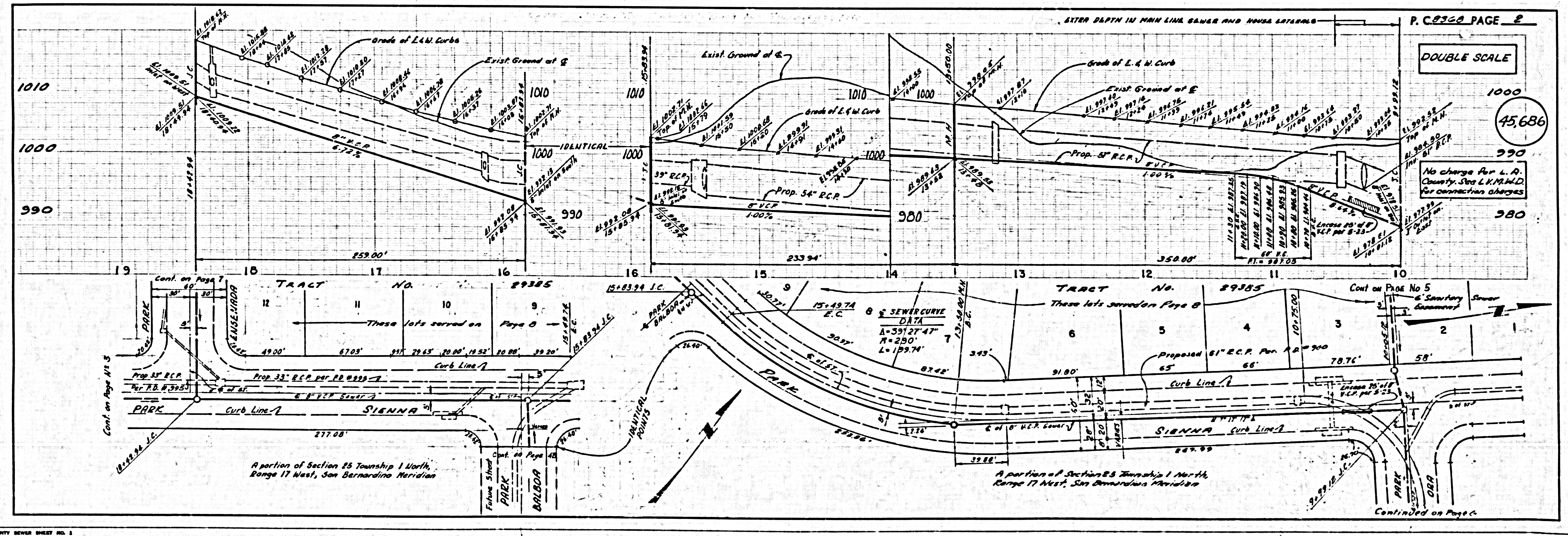
COLLECT CHARGES AS INDICATED

NOTICE TO CONTRACTOR
 The existence and location of any underground utility lines or structures shown on these plans are obtained by a search of the available records. The best of knowledge there are no existing utilities except as shown on these plans. The contractor is required to take due precautionary measures to protect the utility lines shown and any other lines not of record or not shown on these plans.
Richard R. Hume
 REG. C. E. NO. 17061

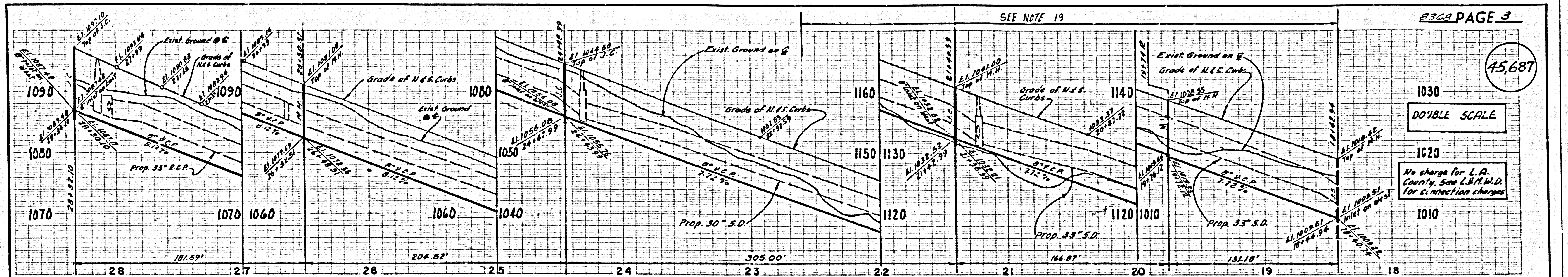
GRABES TO WHICH THIS IMPROVEMENT IS TO BE CONSTRUCTED ARE SHOWN ON PLANS AND PROFILES. GRADE POINTS FOR TOP OF CURB, CENTER LINE OF STREETS, OR CENTER LINE OF ALLEYS ARE SHOWN BY CIRCLES ON PROFILES. AT ALL POINTS BETWEEN THE MARKED POINTS THE GRADE SHALL BE ESTABLISHED SO AS TO CONFORM TO A STRAIGHT LINE DRAWN BETWEEN SAID DESIGNATED POINTS. ELEVATIONS ARE IN FEET ABOVE U.S.C. & G.S. SEA LEVEL UNLESS OTHERWISE NOTED.

NOTES:
 1. ALL CONSTRUCTION SHALL BE IN ACCORDANCE WITH THE STANDARD SPECIFICATIONS FOR PUBLIC WORKS CONSTRUCTION, EDITION 1972, WITH THE EXCEPTIONS NOTED ON THESE PLANS.
 2. THE CONTRACTOR SHALL BE RESPONSIBLE FOR OBTAINING ALL NECESSARY PERMITS FROM THE L.A. COUNTY ROAD DEPT. BEFORE WORK CAN BE STARTED. THE CONTRACTOR SHALL OBTAIN A PERMIT TO EXCAVATE AT COUNTY STREETS FROM THE L.A. COUNTY ROAD DEPT. DISTRICT OFFICE NO. 17, 1700 W. 17TH ST., LOS ANGELES, CALIFORNIA 90024. THE CONTRACTOR SHALL PAY A FEE TO THE COUNTY ENGINEER, ROOM 300, COUNTY ENGINEERING BUILDING, 100 WEST SECOND STREET, LOS ANGELES, CALIFORNIA 90012. THE CONTRACTOR SHALL OBTAIN A PERMIT TO CONSTRUCT FROM THE COUNTY ENGINEER, ROOM 300, COUNTY ENGINEERING BUILDING, 100 WEST SECOND STREET, LOS ANGELES, CALIFORNIA 90012.
 3. APPROVAL OF THIS PLAN BY THE COUNTY OF LOS ANGELES DOES NOT CONSTITUTE A REPRESENTATION AS TO THE ACCURACY OF THE LOCATION OF OR THE EXISTENCE OR NON-EXISTENCE OF ANY UNDERGROUND UTILITY PIPE, OR STRUCTURE WITHIN THE LIMITS OF THE PROJECT. THIS NOTE APPLIES TO ALL PAGES.
 4. IF WORK IS TO BE DONE IN A STATE HIGHWAY, A PERMIT MUST BE OBTAINED FROM THE STATE OF CALIFORNIA, DIVISION OF HIGHWAYS, 100 SOUTH BROAD STREET, LOS ANGELES, CALIFORNIA.

COUNTY OF LOS ANGELES, CALIFORNIA
 HARVEY T. BRANDT, COUNTY ENGINEER
 APPROVED BY *Sam H. Miller*
 APPROVED BY *Richard R. Hume*
 CHECKED BY *Sam H. Miller* 4-14-70
 REG. C. E. NO. 12980
 J.N. 055202



DOUBLE SCALE
 45,686
 No charge for L.A. County Seal L.M.H.D. for connection charges

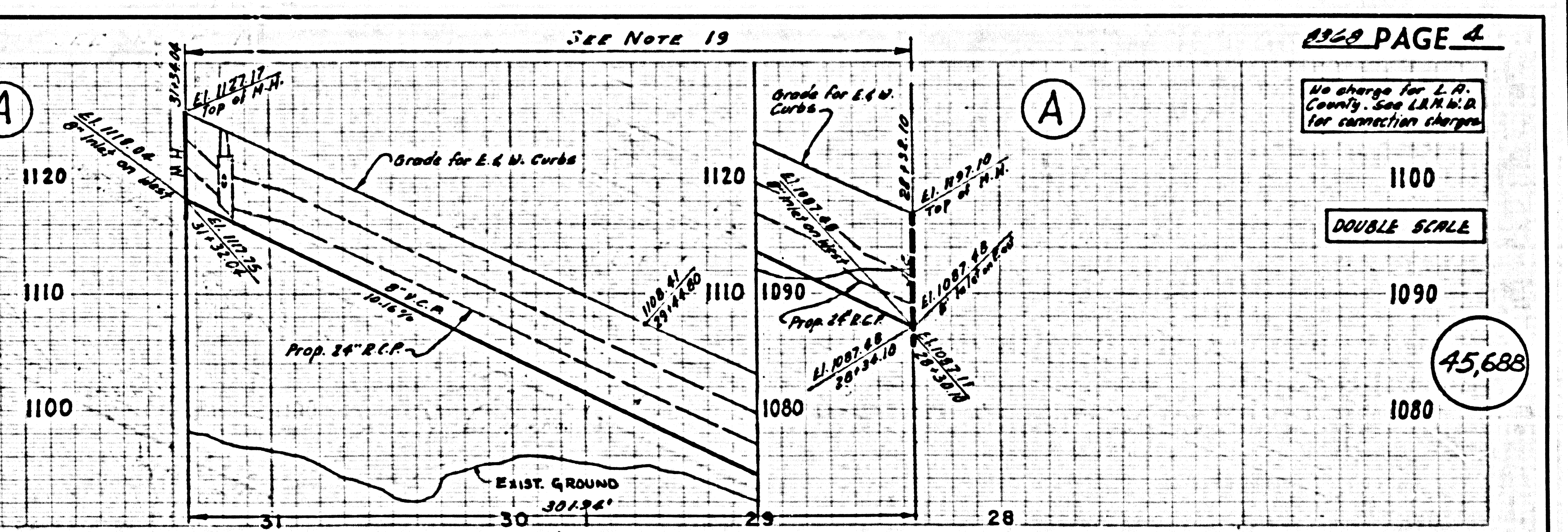
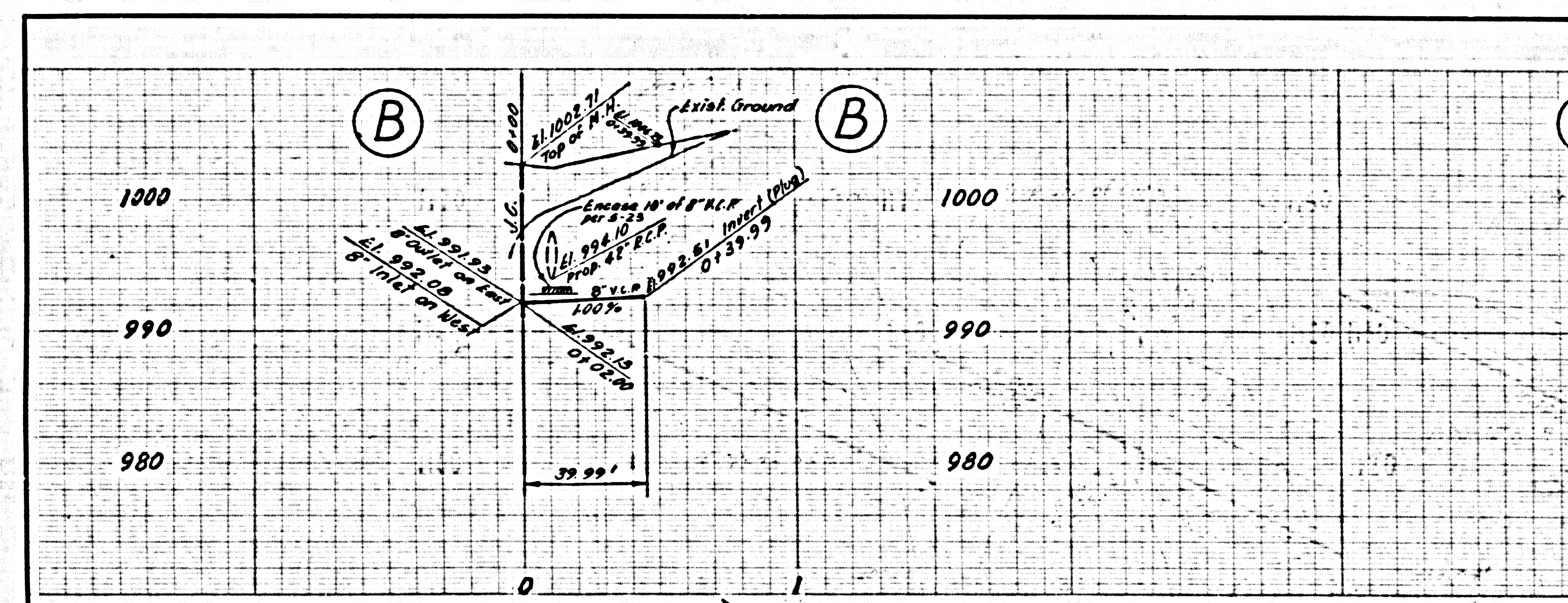
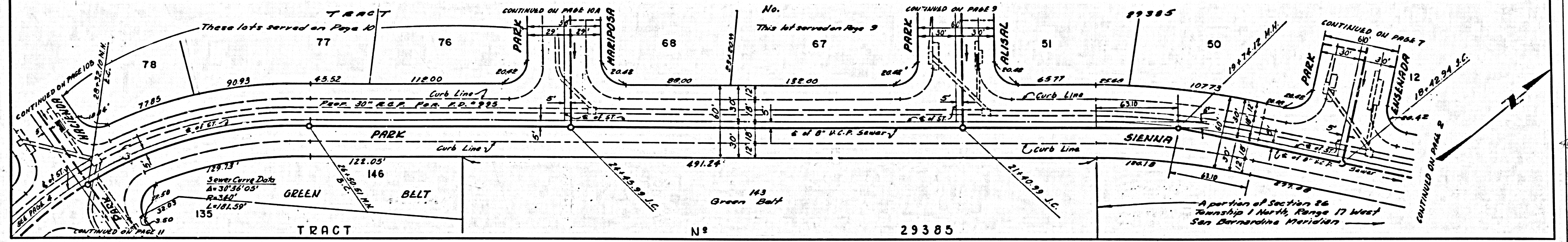


236A PAGE 3

45,687

DOUBLE SCALE

No charge for L.A. County. See L.A.M.W.D. for connection charges

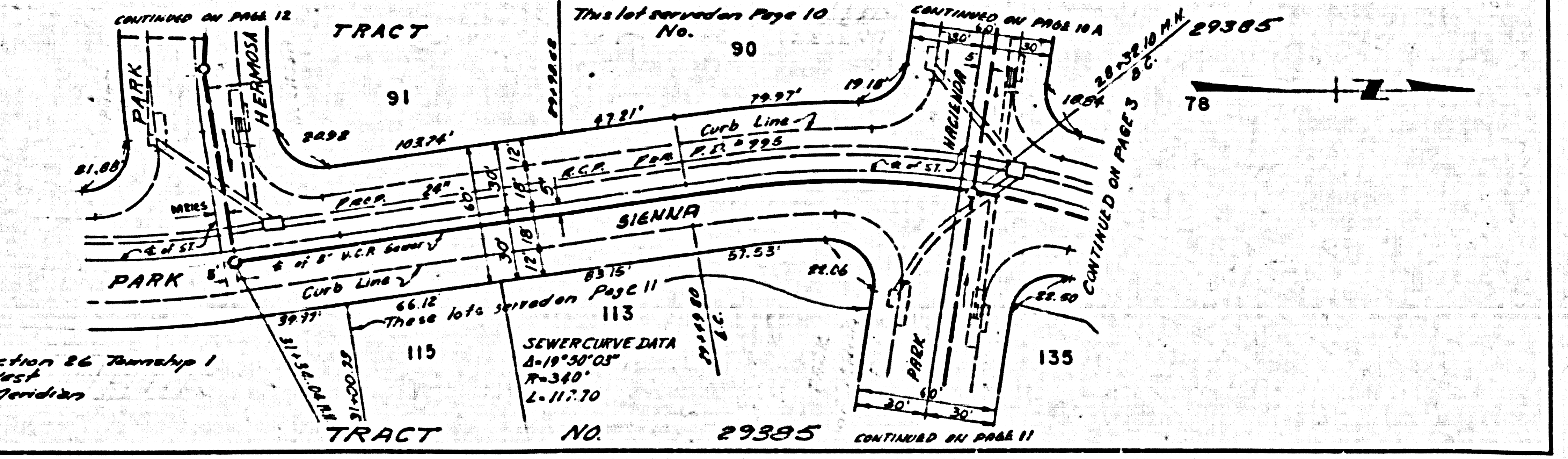
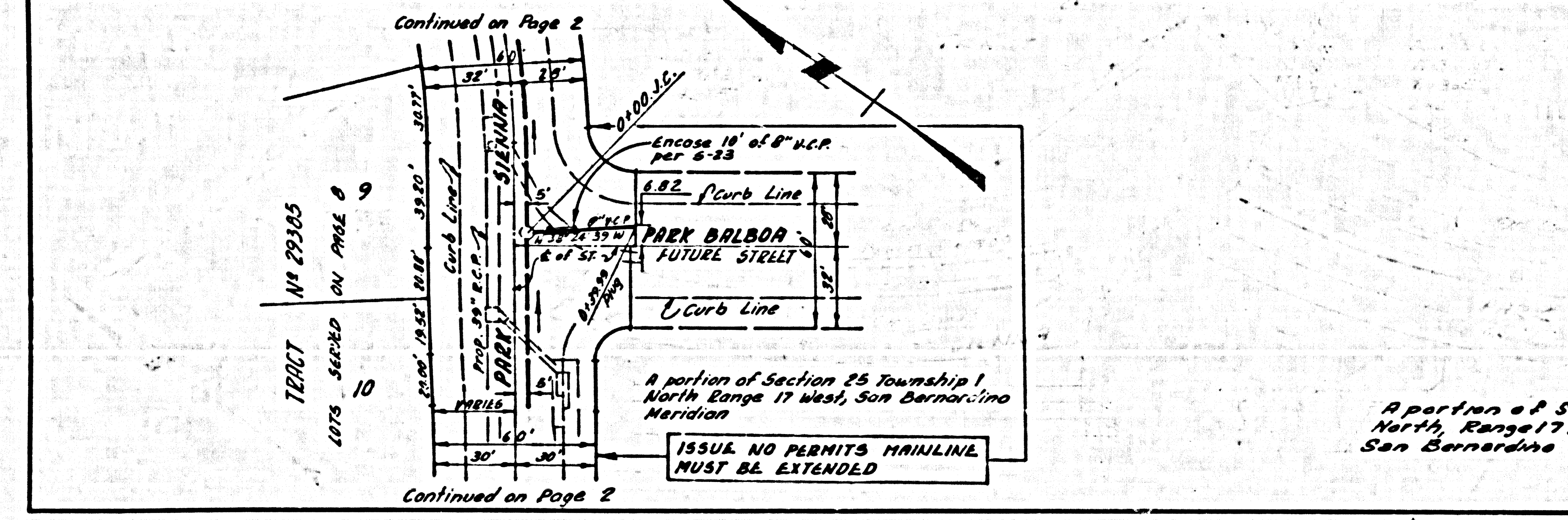


236A PAGE 4

45,688

DOUBLE SCALE

No charge for L.A. County. See L.A.M.W.D. for connection charges



SEE NOTE 19.

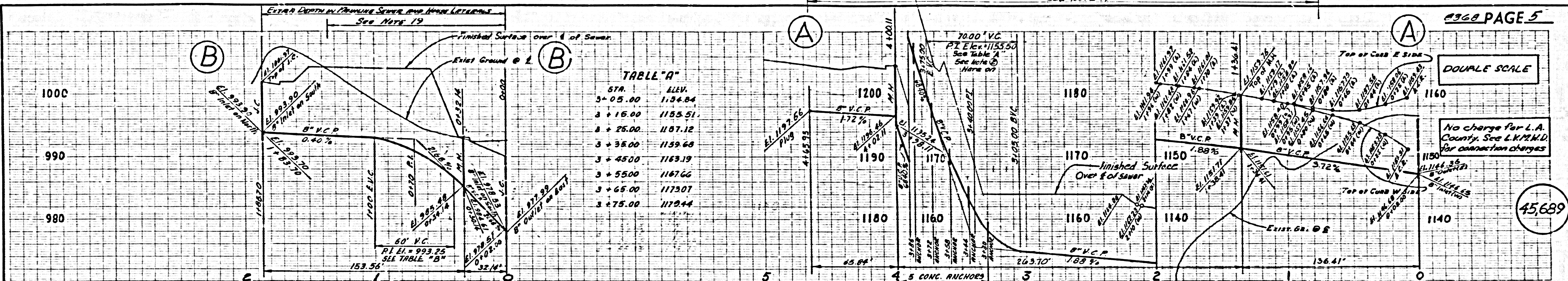
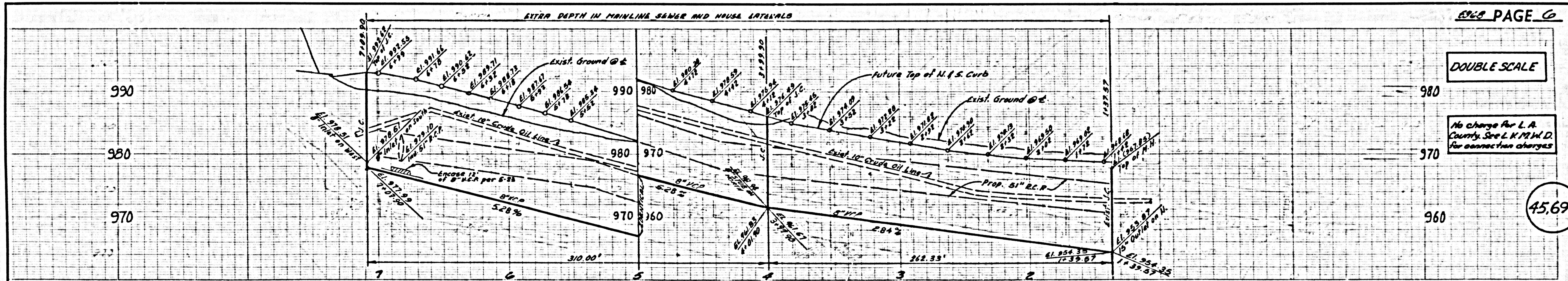
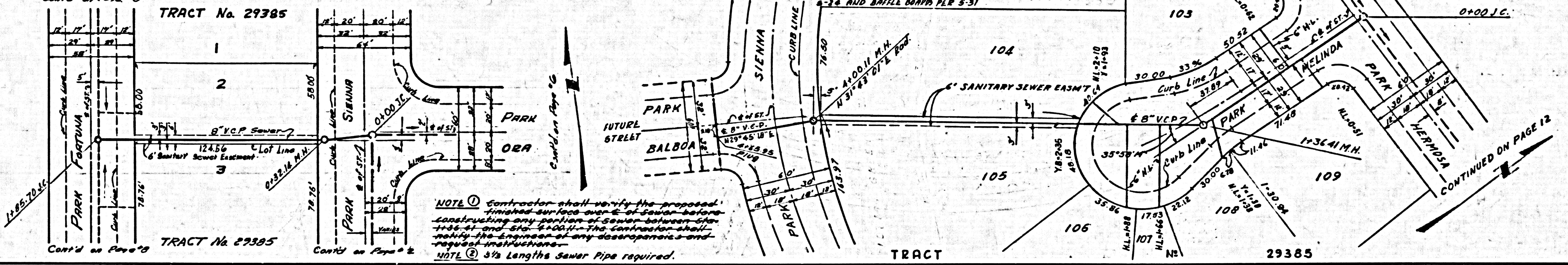


TABLE "A"

STA.	ELEV.
3+05.00	1134.84
3+15.00	1153.51
3+25.00	1187.12
3+35.00	1159.60
3+45.00	1163.19
3+55.00	1167.66
3+65.00	1173.07
3+75.00	1172.44

TABLE "B"

0+40	986.75
0+45	987.79
0+50	989.40
0+55	989.37
0+60	991.83
0+65	991.68
0+70	992.16
0+75	992.58
0+80	992.58
0+85	992.91
0+90	993.15
0+95	993.31
1+00	993.37



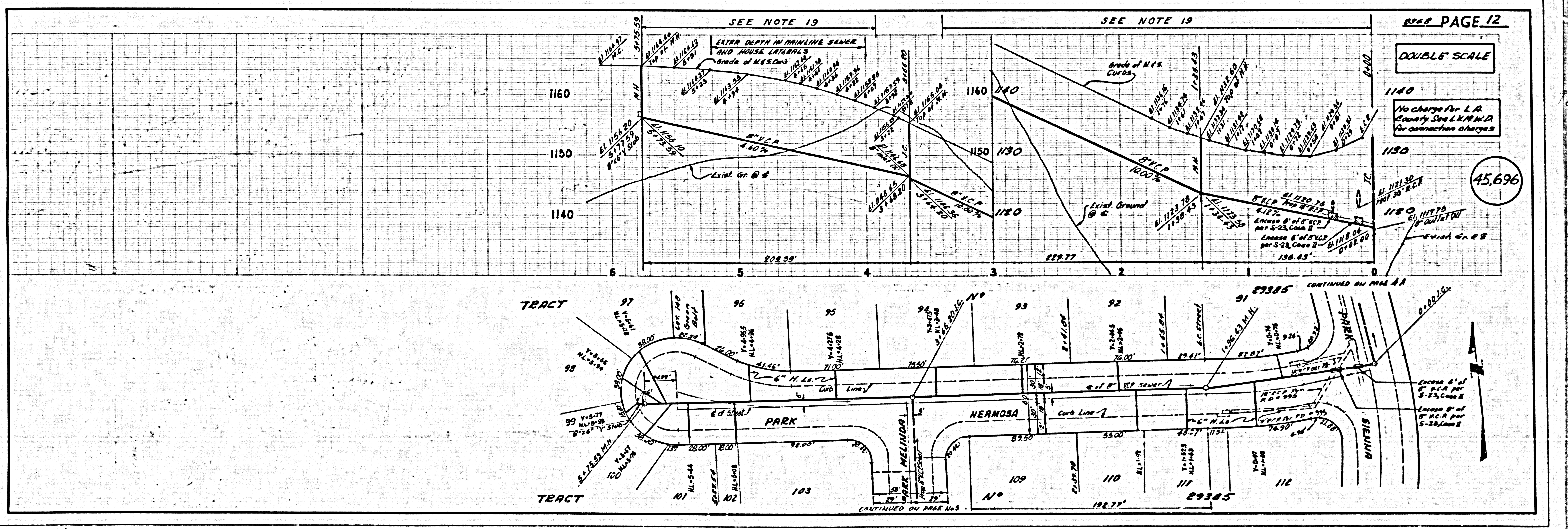
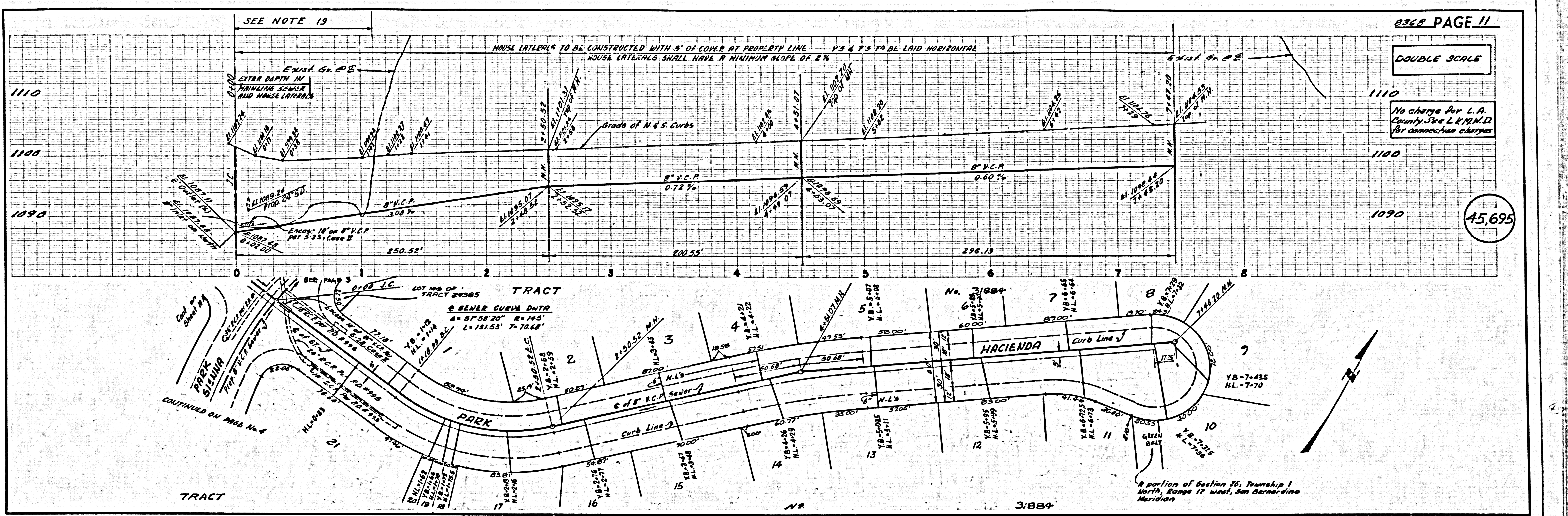
CAUTION
Primary Service
Telephone & CATV

CAUTION
10" Oil Line

CAUTION
Primary Power
Telephone &
CATV

SEWER CURVE DATA
A = 4'-57.35"
R = 134.00'
L = 106.61' @ 53.50°

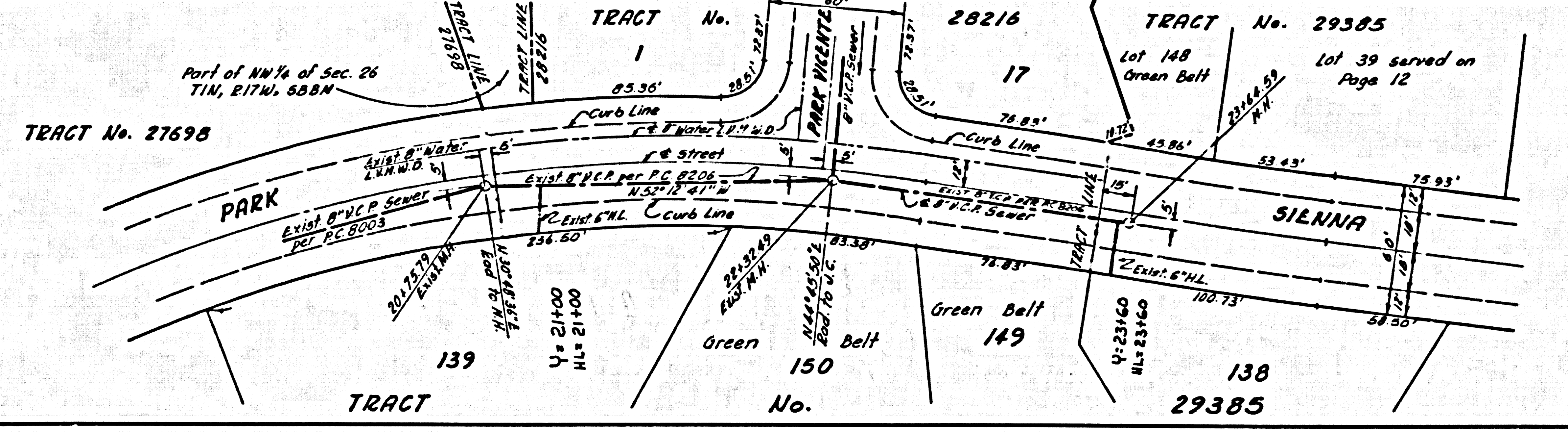
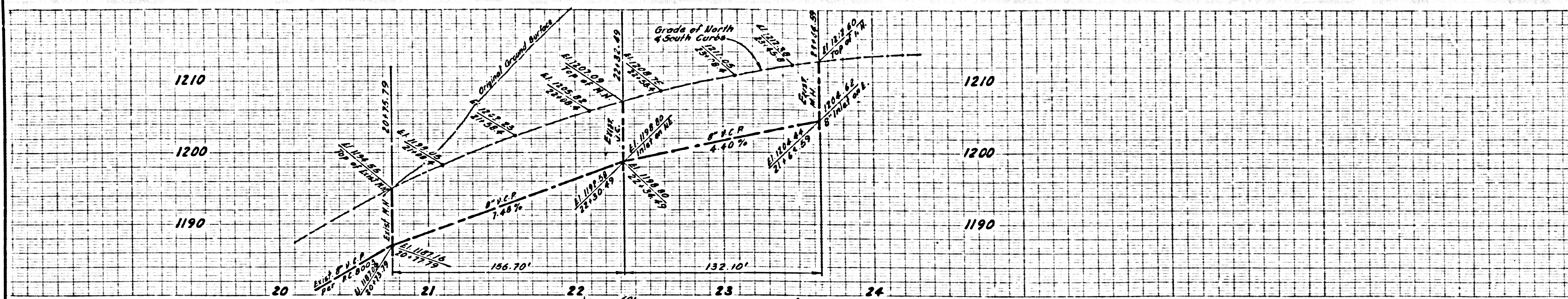
A portion of Section 25 Township 1 North,
Range 17 West, San Bernardino Meridian



DOUBLE SCALE

NO CHARGE FOR L.A. COUNTY SEA L.N.M.D FOR CONNECTION EMPAGES.

45,697



PAGE