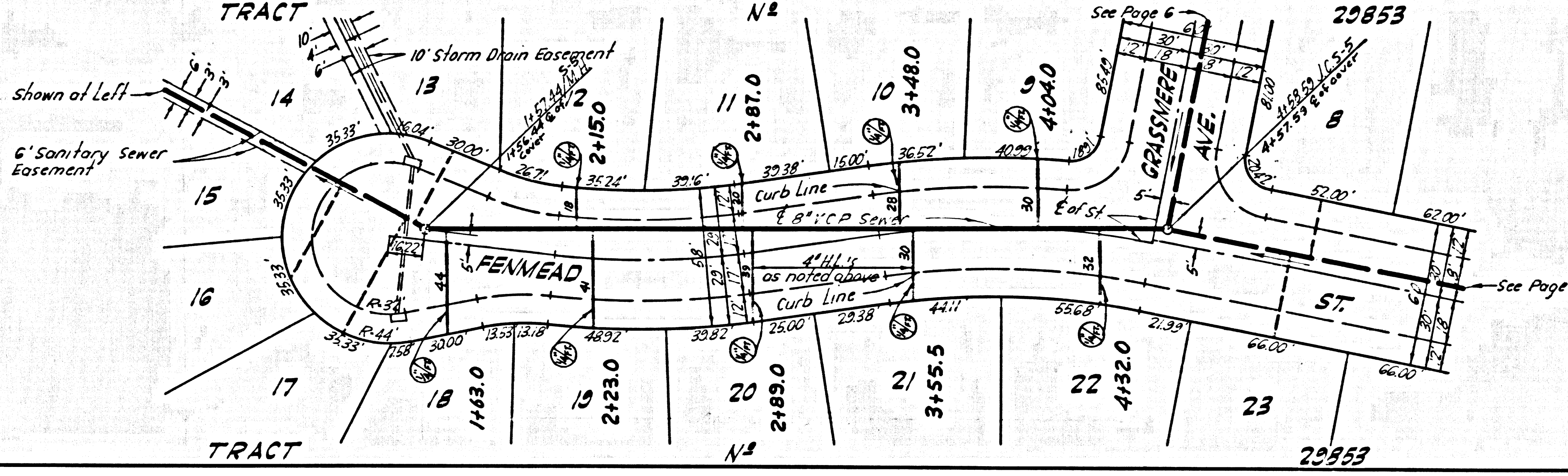
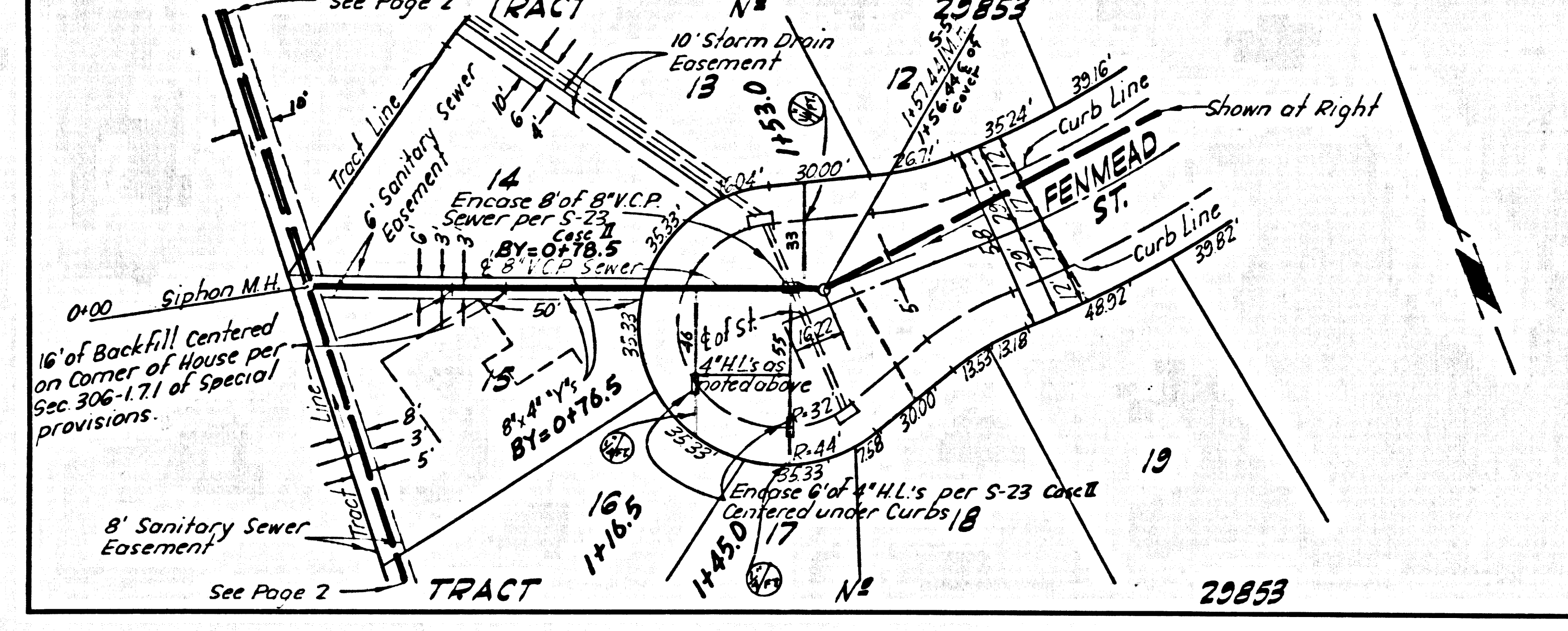


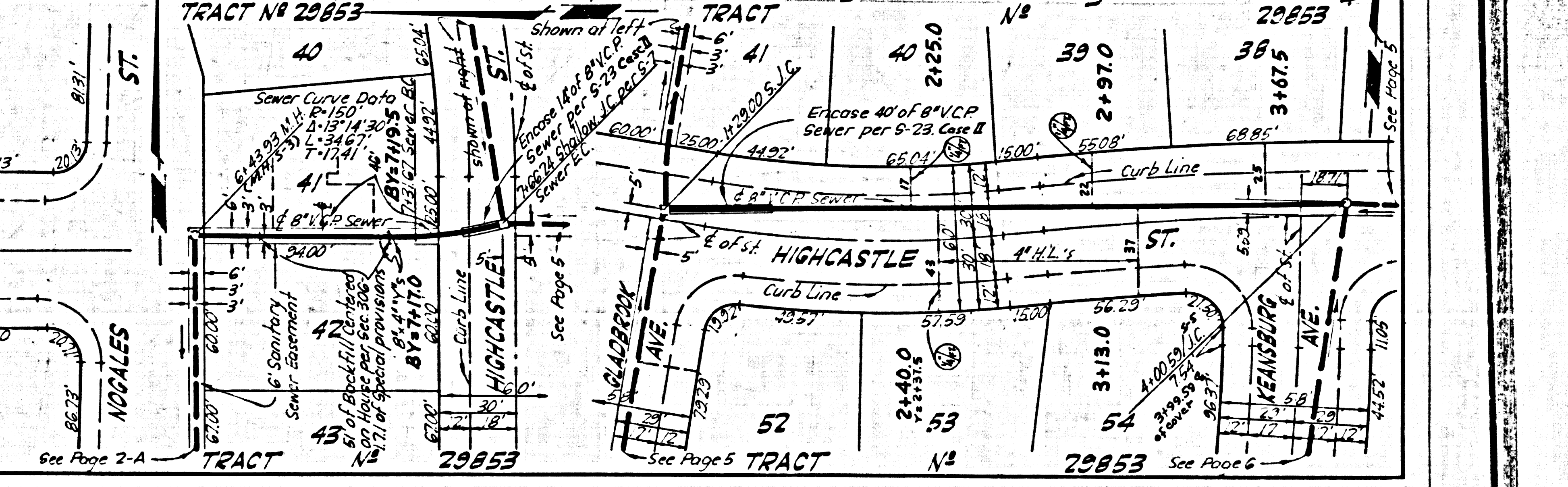
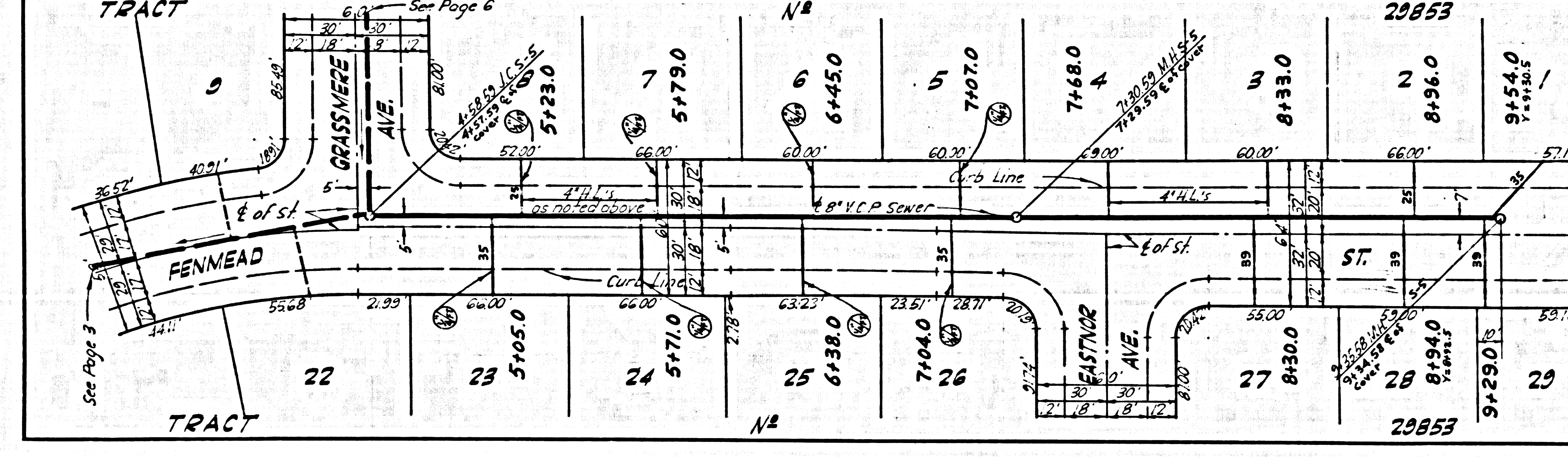
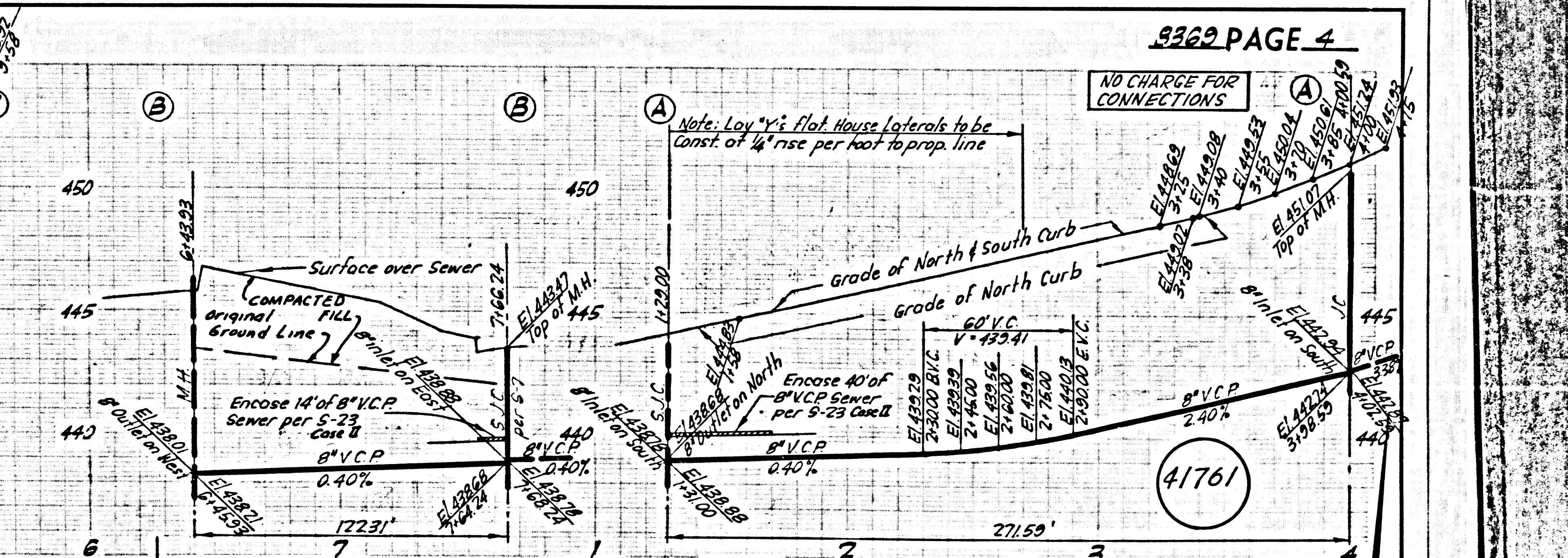
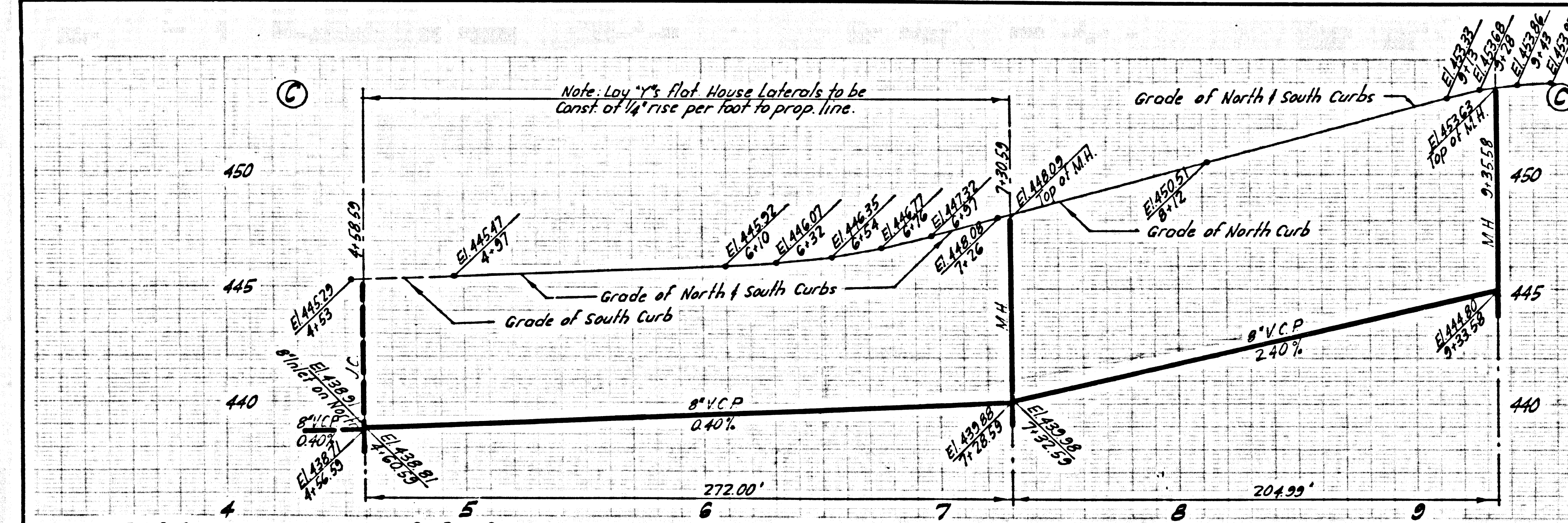
8360 PAGE 3
NO CHARGE FOR CONNECTIONS

41760

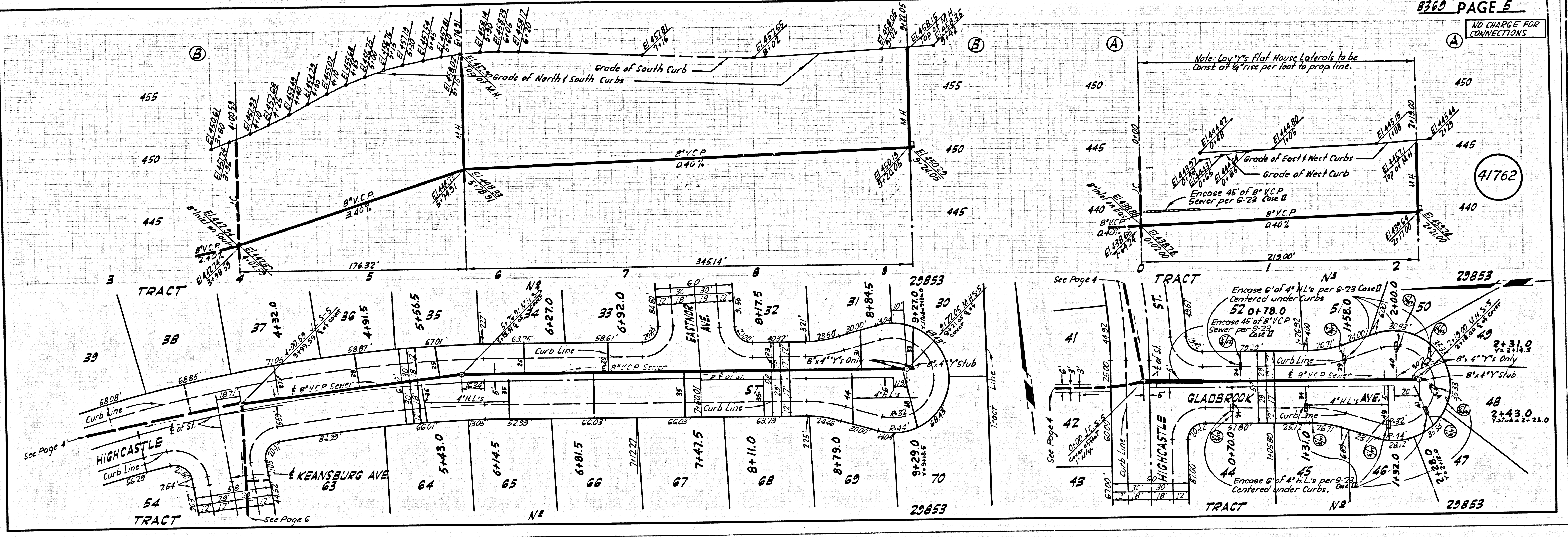


8360 PAGE 4
NO CHARGE FOR CONNECTIONS

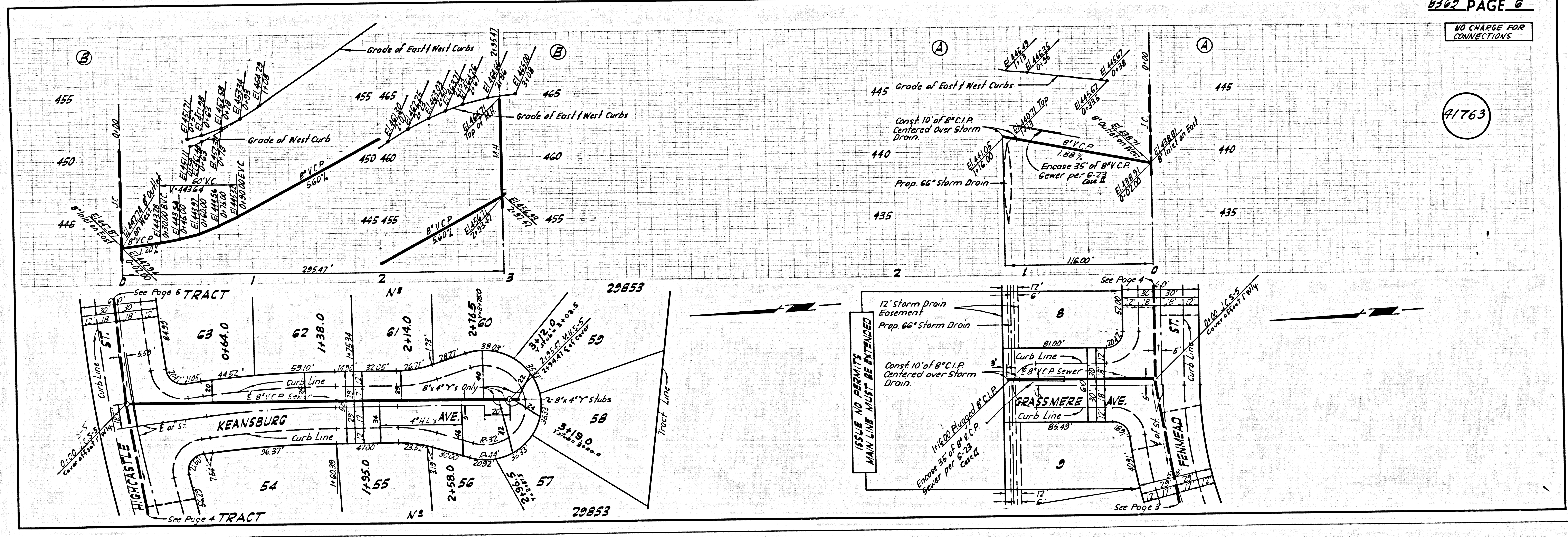
41761



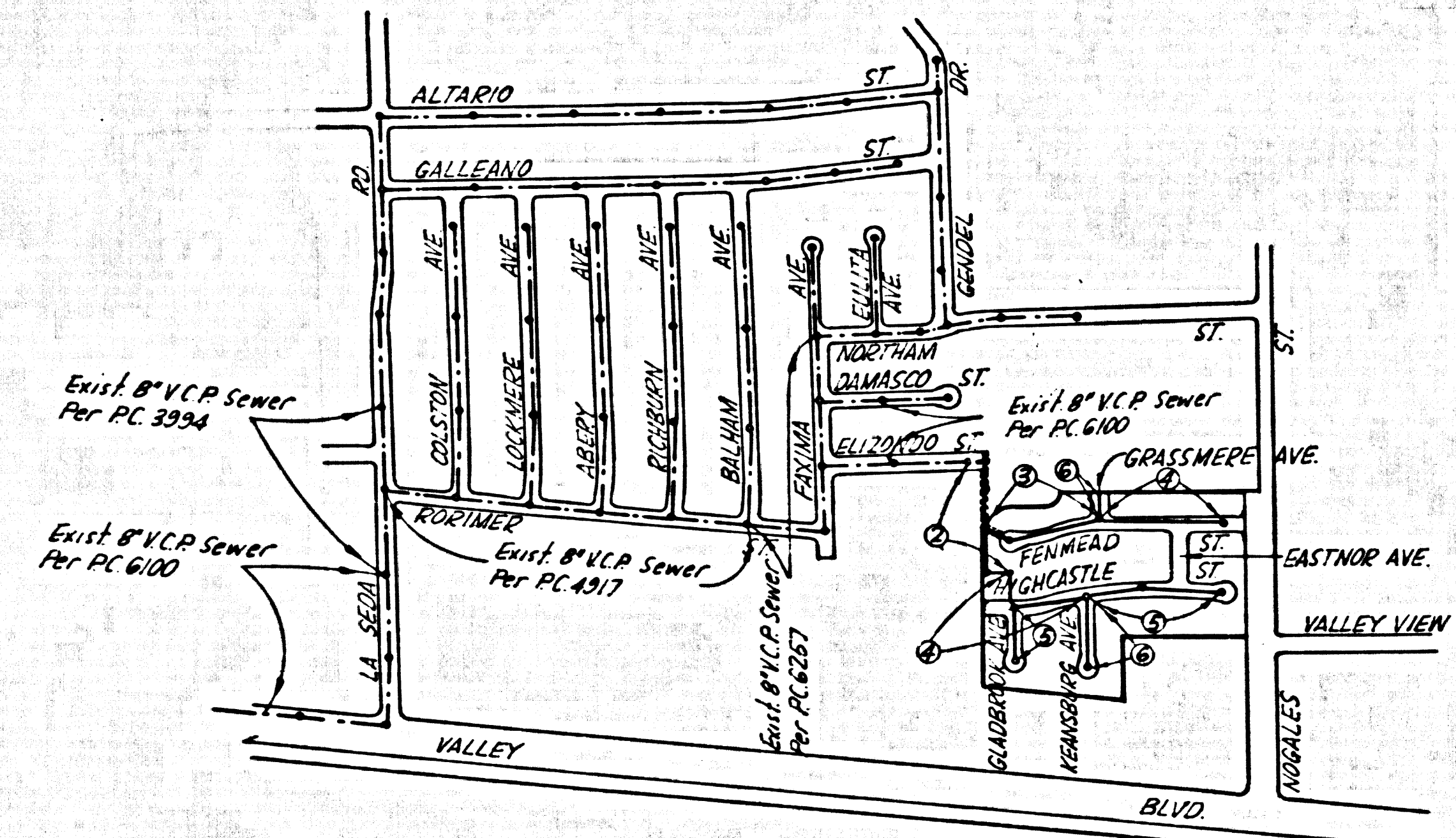
NO CHARGE FOR CONNECTIONS



NO CHARGE FOR CONNECTIONS



B.M. B.G. 1757 Elev. 453.904
 LIT in Conc Slab to front door to house N° 537 Nopolas St. 94 1/2' W of 025 N. W. Valley Blvd. Mcd (B.M.)
 COVINA QUAD. 19 65

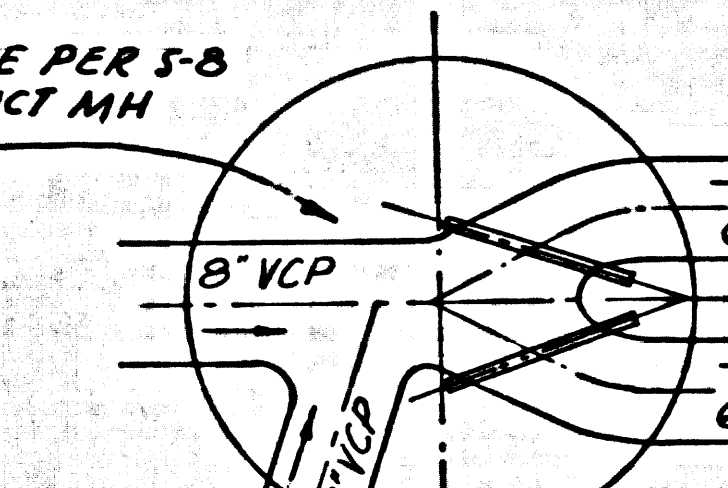


INDEX MAP
 TRACT N° 29853
 P.C. 8369
 SCALE 1"=600'

THE FOLLOWING LATEST REVISED STANDARD PLANS ON FILE IN THE OFFICE OF THE COUNTY ENGINEER SHALL APPLY IN THE CONSTRUCTION OF THIS PROJECT

LEGEND:
 MINIMUM PUBLIC SAFETY REQUIREMENTS - S-2
 BRICK MANHOLE - S-3
 NON-REINFORCED PRECAST CONCRETE MANHOLE - S-4
 REINFORCED PRECAST CONCRETE MANHOLE - S-4
 MANHOLE FRAME AND COVER - S-5
 MANHOLE STEP - S-6
 BEDDING FOR SEWER PIPE - S-7
 CROWLING AND ENCASUREMENT - S-23
 WYE OR TEE SUPPORT - S-26
 ALLOWABLE TRENCH WIDTH - S-29
 SIPHON MANHOLE - S-8
 RECTANGULAR SHALLOW MANHOLE - S-7
 RECTANGULAR FRAME & COVER - S-16

SIPHON M.H. BASE PER S-8
 MODIFIED, CONSTRUCT M.H. WALL PER S-5



SIPHON DETAIL
 STATION 3+36.64
 PAGE 2 B
 NO SCALE

LA PUENTE BLDG. DIST. NO. 2

- NOTE:
- PROPOSED STAKES ON THE PROPERTY LINE OR PROPERTY LINES PRODUCED AT RIGHT ANGLES TO THE SEWER LINE AT THE CENTER LINE OF EACH MANHOLE.
 - NO REPRESENTATIVE OF THE COUNTY ENGINEER WILL SURVEY OR LAY OUT ANY PORTION OF THE WORK.
 - THE PRIVATE ENGINEER SHALL FURNISH THE COUNTY ENGINEER WITH GRADE SHEETS AND STATIONING FOR ALL HOUSE LATERALS AND "T" OR "Y" BRANCHES AND SHALL PROVIDE STAKES FOR THEM AT THEIR PROPER LOCATIONS WITH STATIONING PLAINLY MARKED. ALL HOUSE LATERALS SHALL BE CONSTRUCTED IN A STRAIGHT ALIGNMENT AT RIGHT ANGLES FROM THE MAIN LINE SEWER EXCEPT AS SHOWN ON THE PLANS. HOUSE LATERALS FROM CHIMNEYS SHALL HAVE AN ANGLE OF LESS THAN 45° WITH THE MAIN LINE SEWER. ANY CHANGE IN ALIGNMENT SHALL BE REQUESTED IN WRITING BY THE PRIVATE ENGINEER.
 - THE PRIVATE ENGINEER SHALL FURNISH THE HOUSE LATERAL DEPTH AT THE PROPERTY LINE BELOW THE TOP OF CURB ELEVATION FOR EACH HOUSE LATERAL ON THE GRADE SHEET.
 - NO DIVERSIONS SHALL BE MADE IN THESE PLANS WITHOUT THE APPROVAL OF THE COUNTY ENGINEER.
 - THE CONTRACTOR SHALL NOTIFY THE CONSTRUCTION DIVISION BY TELEPHONE, MADISON 9-4747, EXT. 81158, AT LEAST TWENTY-FOUR HOURS BEFORE STARTING ANY WORK UNDER THIS CONTRACT.
 - ALL STRUCTURES SHALL BE BUILT IN ACCORDANCE WITH THE STANDARD SPECIFICATIONS, SECTION 208-2.
 - 7" OR 8" SUBGRADE MAY BE USED FOR CONNECTIONS TO MAINLINE SEWER, EXCEPT AS NOTED.
 - MANHOLE TOPS IN UNIMPROVED RIGHTS-OF-WAY TO BE SIX INCHES ABOVE FINISHED GRADE.
 - USE EXTRA STRENGTH PIPE. ALL PIPE IS STANDARD DEPTH EXCEPT AS NOTED.
 - VITRIFIED CLAY PIPE JOINTS SHALL BE TYPE "D" PER STANDARD SPECIFICATIONS, SECTION 208-2.
 - IF A POWER POLE IS WITHIN THREE FEET OF THE SEWER, THE SEWER SHALL BE ENCASED, PER S-23, TWO FEET ON EACH SIDE FROM THE POINT OF INTERFERENCE.
 - IF DURING THE COURSE OF CONSTRUCTION IT IS DETERMINED THAT THERE IS LESS THAN FOUR FEET OF COVER OVER THE TOP OF A MAIN LINE OR HOUSE LATERAL V.C.P. SEWER WHICH IS NOT INDICATED ON THE PLANS, THE PIPE SHALL BE ENCASED PER S-23, UNLESS OTHERWISE APPROVED BY THE COUNTY ENGINEER.
 - HOUSE LATERALS TO BE CONSTRUCTED WITH INVERTS AT PROPERT LINE 6 FEET BELOW CURB GRADE EXCEPT AS NOTED.
 - REINFORCE ALL TRENCHES WITHIN PAVED AREAS TO MEET L.A. COUNTY ROAD DEPT. OR CALIFORNIA STATE HIGHWAY REQUIREMENTS IN ACCORDANCE WITH PERMITS.
 - SEWERS TO BE TESTED FOR LEAKAGE PER SECTION 306.3.3.3 OF THE STANDARD SPECIFICATIONS.
 - REFER TO SECTION 7.02.4.1 OF THE STANDARD SPECIFICATIONS REGARDING SAFETY DEGREES.
 - SPECIAL BACKFILL IN DESIGNATED AREAS:
 a. BACKFILL TRENCH AND REPLACE OTHER EARTH REMOVED SO AS TO ACHIEVE THE NATURAL OR FINISHED GRADES AND SLOPES SHOWN ON THE GRADING PLAN APPROVED FOR THIS TRACT BY THE BUILDING AND SAFETY DIVISION.
 b. ALL BACKFILL AND EARTH REPLACED SHALL BE COMPACTED TO A MINIMUM OF 90% OR MAXIMUM BENEFIT PER A.S.T.M. STANDARD METHOD OF TEST SHOWN AT AS INDICATED. ACCEPTABLE CERTIFICATION OF SUCH COMPACTION SHALL BE SUBMITTED TO THE CONSTRUCTION DIVISION.
 c. ALL JOINTS BETWEEN CAST IRON PIPE AND VITRIFIED CLAY PIPE SHALL BE MADE WITH A RUBBER SLEEVE JOINT TYPE "C" OR "D" WITH BUSHING IF NECESSARY PER STD. SPEC. SECTION 208-2.

County Sanitation Districts shall be notified prior to the following so that required inspections can be made (Phone 327-1028 x 666-8897)

Acceptance of the project.

No connections for the disposal of industrial wastes shall be made to sewers shown on these drawings without written permission from the Chief Engineer and General Manager of the County Sanitation Districts.

COLLECT CHARGES
 AS INDICATED

APPROVED:
 SEWER MAINT. SECTION
 CARL PEARSON 1/20/70

PROFILE ALIGNMENT AND GRADE OF
 SANITARY SEWERS
 CONSTRUCTED IN
 TRACT N° 29853

PRIVATE CONTRACT NO. 8369

W.S. 38
 3 SHEETS, 6 PAGES
 SCALE: VERT. 1"=4'
 HORIZ. 1"=40' OCT, 1969
 PREPARED IN THE OFFICES OF
 EVANS & ASSOCIATES INC.
 1543 N. GARVEY AVE. WEST COVINA, CALIFORNIA 91761
 REG. C. E. NO. 2476

FOR LEGEND SEE PLAN NO. S-1

GRADES TO WHICH THIS IMPROVEMENT IS TO BE CONSTRUCTED ARE SHOWN ON PLANS AND PROFILES. GRADE POINTS FOR TOP OF CURBS, CENTER LINE OF STREETS, OR CENTER LINE OF ALLEYS ARE SHOWN BY CIRCLES ON PROFILES. AT ALL POINTS BETWEEN DESIGNATED POINTS THE GRADE SHALL BE ESTABLISHED SO AS TO CONFORM TO A STRAIGHT LINE DRAWN BETWEEN SAID DESIGNATED POINTS. ELEVATIONS ARE IN FEET ABOVE U.S.C. & G.S. SEA LEVEL DATUM OF 1929.

STANDARD SPECIFICATIONS FOR PUBLIC WORKS CONSTRUCTION AND SPECIAL PROVISIONS FOR THE CONSTRUCTION OF SANITARY SEWERS (ADOPTED JAN. 2, 1965 AS AMENDED) SHALL BE PROSECUTED AND SHALL BE CONSIDERED AS PART OF THESE DRAWINGS.

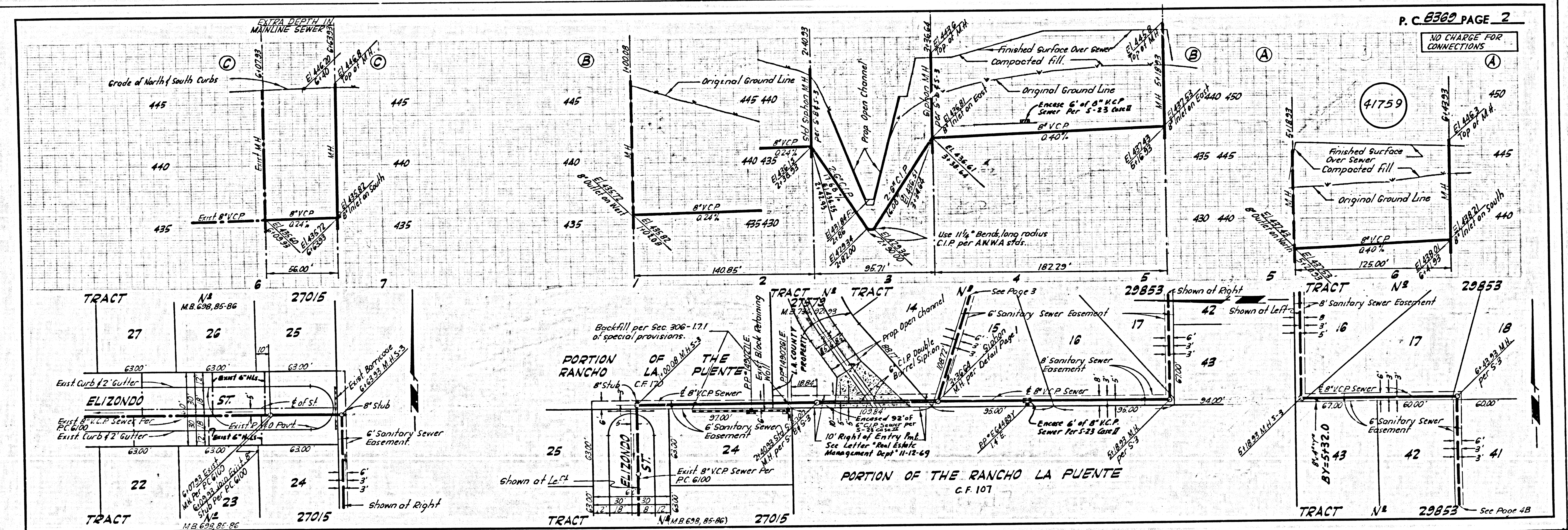
THE PRESENCE OF THE COUNTY ENGINEER'S OFFICE AND THE COUNTY ENGINEER, ROOM 308, COUNTY ENGINEERING BUILDING, 120 WEST SECOND STREET OR 201 E. DUNAVILLE AVE., SAN ANTONIO, TEXAS, REGIONAL OFFICE, SUPPORTIVE TO COVER THE COST OF CONSTRUCTION INSPECTION AND RECORD PLANS.

APPROVAL OF THIS PLAN BY THE COUNTY OF LOS ANGELES DOES NOT CONSTITUTE A REPRESENTATION AS TO THE ACCURACY OF THE LOCATION OF OR THE EXISTENCE OR NON-EXISTENCE OF ANY UNDESIGNATED UTILITY PIPE, OR STRUCTURE WITHIN THE LIMITS OF THIS PROJECT. THIS NOTE APPLIES TO ALL PAGES.

IF WORK IS TO BE DONE ON A STATE HIGHWAY A PERMIT MUST BE OBTAINED FROM THE STATE OF CALIFORNIA, DIVISION OF HIGHWAYS, 120 SOUTH SPRING STREET, LOS ANGELES, CALIFORNIA.

COUNTY OF LOS ANGELES, CALIFORNIA
 JOHN A. LAMBIE, COUNTY ENGINEER
 J. D. PARKHURST, CHIEF ENGINEER
 APPROVED BY: [Signature] SAN ANTONIO REGIONAL ENGINEER
 APPROVED BY: [Signature] OFFICE ENGINEER

CHECKED BY: Ralph [Signature] 1/21/70
 REG. C. E. NO. 3496



P.C. 8369 PAGE 2
 NO CHARGE FOR CONNECTIONS

L.A. COUNTY SEWER SHEET NO. 1 SOUTHERN CALIFORNIA BLUEPRINT CO.