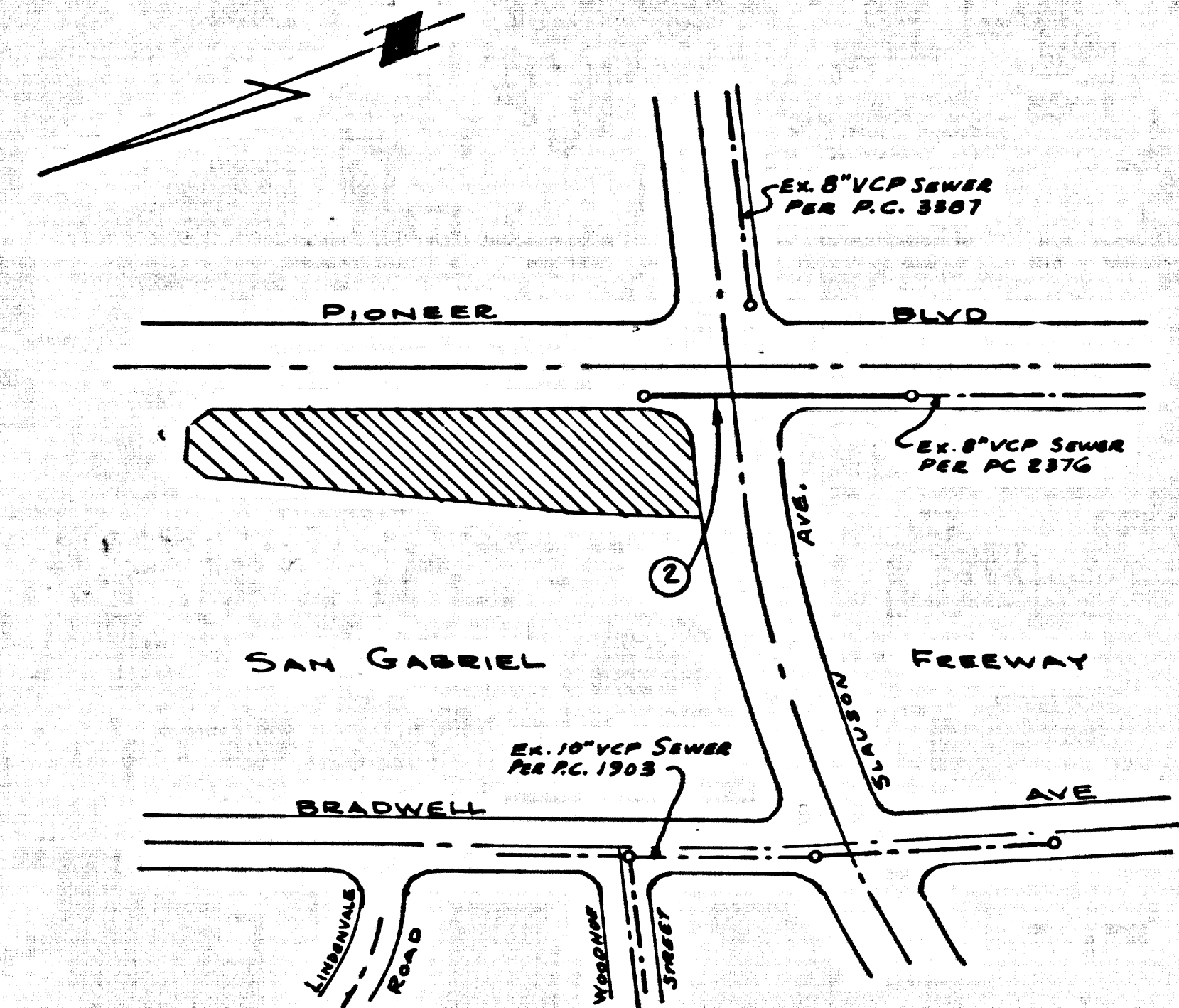


B.M. 87 1686 ELEV. 158.184
 1.6 BN. 1 FT. E. OF B.C.R. AT N.E. COR. WASHINGTON
 BLVD. & PIONEER BLVD. 35 FT. N. & 75 FT. E.
 OF 1/4 INTERSECTION.
 RIVERA QUAD. 19 65.



INDEX MAP P.C. 8376
 SCALE: 1" = 200'
 PIONEER BOULEVARD

NOTICE TO CONTRACTOR

THE EXISTENCE AND LOCATION OF ANY UNDERGROUND UTILITY PIPES OR STRUCTURES SHOWN ON THESE PLANS ARE OBTAINED BY A SEARCH OF THE AVAILABLE RECORDS TO THE BEST OF MY KNOWLEDGE THERE ARE NO EXISTING UTILITIES EXCEPT AS SHOWN ON THESE PLANS.
 THE CONTRACTOR IS REQUIRED TO TAKE DUE PRECAUTIONARY MEASURES TO PROTECT THE UTILITY LINES SHOWN AND ANY OTHER LINES NOT OF RECORD OR NOT SHOWN ON THESE PLANS.
 JOHN B. ABELL REG. C. E. NO. 9070

JOHN B. ABELL
 REG. C. E. NO. 9070

COLLECT CHARGES AS INDICATED

WHITTIER BLDG. DIST. NO. 11

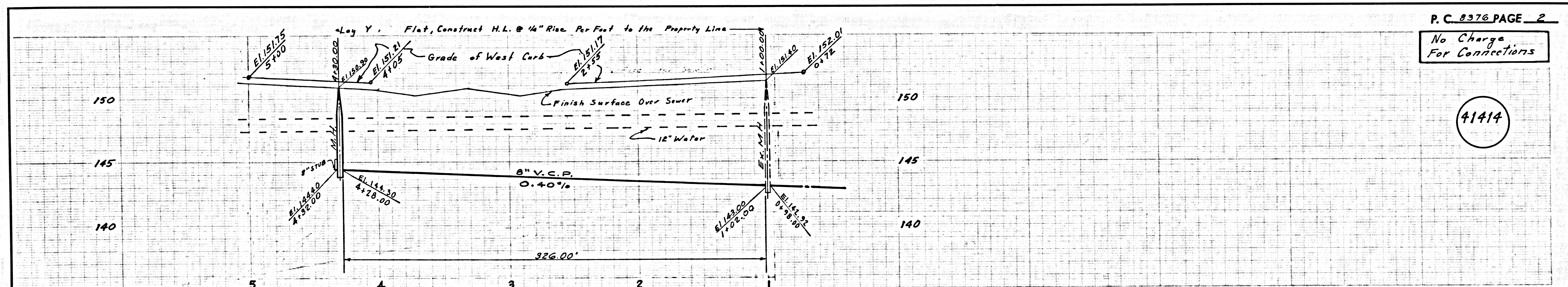
- NOTE:
- HOUSE LATERALS TO BE CONSTRUCTED WITH INVERTS AT PROPERTY LINE 6 FEET BELOW CURB GRADE EXCEPT AS NOTED.
 - PROVIDE STAKES ON THE PROPERTY LINE OR PROPERTY LINES PRODUCED AT RIGHT ANGLES TO THE SEWER LINE AT THE CENTER LINE OF EACH MANHOLE.
 - NO REPRESENTATIVE OF THE COUNTY ENGINEER WILL SURVEY OR LAY OUT ANY PORTION OF THE WORK.
 - THE PRIVATE ENGINEER SHALL FURNISH THE COUNTY ENGINEER WITH GRADE SHEETS AND STATIONING FOR ALL HOUSE LATERALS AND "T" OR "C" BRANCHES AND SHALL PROVIDE STAKES FOR THEM AT THEIR PROPER LOCATIONS WITH STATIONING PLAINLY MARKED. ALL HOUSE LATERALS SHALL BE CONSTRUCTED IN A STRAIGHT ALIGNMENT AT RIGHT ANGLES FROM THE MAIN LINE SEWER EXCEPT AS SHOWN ON THE PLANS. HOUSE LATERALS FROM CHIMNEYS SHALL NOT HAVE AN ANGLE OF LESS THAN 45° WITH THE MAIN LINE SEWER. ANY CHANGE IN ALIGNMENT SHALL BE REQUESTED IN WRITING BY THE PRIVATE ENGINEER.
 - THE PRIVATE ENGINEER SHALL FURNISH THE HOUSE LATERAL DEPTH AT THE PROPERTY LINE BELOW THE TOP OF CURB ELEVATION FOR EACH HOUSE LATERAL ON THE GRADE SHEET.
 - NO REVISIONS SHALL BE MADE IN THESE PLANS WITHOUT THE APPROVAL OF THE COUNTY ENGINEER.
 - THE CONTRACTOR SHALL NOTIFY THE CONSTRUCTION DIVISION BY TELEPHONE, MADISON 9-2747, EXT. 81581, AT LEAST TWENTY-FOUR HOURS BEFORE STARTING ANY WORK UNDER THIS CONTRACT.
 - ALL STRUCTURES SHALL BE BUILT TO MEET THE REQUIREMENTS OF THE STANDARD SPECIFICATIONS FOR PUBLIC WORKS CONSTRUCTION AND SPECIAL PROVISIONS FOR THE CONSTRUCTION OF SANITARY SEWERS DATED FEB. 15, 1962, AS REVISED, AND SHALL BE PROTECTED ONLY IN THE PRESENCE OF THE COUNTY ENGINEER.
 - "T" OR "C" BRANCHES SHALL BE USED FOR CONNECTIONS TO MAINLINE SEWERS EXCEPT AS NOTED.
 - MANHOLE-FRAME-IN-SANITARY-SEWERS OF WHAT SO BE 24 INCHES ABOVE FINISHED GRADE.
 - USE EXTRA STRENGTH PIPE. ALL PIPE IS STANDARD DEPTH EXCEPT AS NOTED.
 - VITRIFIED CLAY PIPE JOINTS SHALL BE TYPE "T", "C", OR "O" PER STANDARD SPECIFICATIONS SECTION 306-2.
 - IF A POWER POLE IS WITHIN THREE FEET OF THE SEWER, THE SEWER SHALL BE ENCASED, PER S-23, TWO FEET ON EACH SIDE FROM THE POINT OF INTERFERENCE.
 - IF DURING THE COURSE OF CONSTRUCTION IT IS DETERMINED THAT THERE IS LESS THAN FOUR FEET OF COVER OVER THE TOP OF A MAIN LINE OR HOUSE LATERAL V.C.P. SEWER WHICH IS NOT INDICATED ON THE PLANS, THE PIPE SHALL BE ENCASED PER S-23, UNLESS OTHERWISE APPROVED BY THE COUNTY ENGINEER.
 - REINFORCE ALL TRENCHES WITHIN PAVED AREAS TO MEET L.A. COUNTY ROAD DEPT. OR CALIFORNIA STATE HIGHWAY REQUIREMENTS IN ACCORDANCE WITH PERMITS.
 - SEWERS TO BE TESTED FOR LEAKAGE PER SECTION 306-2.3.7 OF THE STANDARD SPECIFICATIONS.
 - REFER TO SECTION 7-10.1.1 OF THE STANDARD SPECIFICATIONS, REGARDING SAFETY ORDERS.
 - ALL JOINTS BETWEEN CAST IRON PIPE AND VITRIFIED CLAY PIPE SHALL BE MADE WITH A RUBBER SLEEVE JOINT, TYPE "C" OR "W", WITH BUSHING IF NECESSARY PER STANDARD SPECIFICATIONS, SECTION 306-2.
- THE FOLLOWING LATEST REVISED STANDARD PLANS ON FILE IN THE OFFICE OF THE COUNTY ENGINEER SHALL APPLY IN THE CONSTRUCTION OF THIS PROJECT:
- | | |
|---|------------|
| LEGEND | S-1 |
| MINIMUM PUBLIC SAFETY REQUIREMENTS | S-2 |
| BRICK MANHOLE | S-3 |
| NON-REINFORCED PRECAST CONCRETE MANHOLE | S-4 |
| REINFORCED PRECAST CONCRETE MANHOLE | S-5 |
| MANHOLE FRAME AND COVER | S-15 |
| STANDARD MANHOLE STEP | S-17 |
| BRIDGING FOR SEWER PIPE | S-21 |
| CRADLING AND ENCASMENT | S-23 |
| PIPE ON THE SUPPORT | S-24 |
| ALLOWABLE TRENCH WIDTHS | S-25 |
- TRENCHES SHALL BE IN ACCORDANCE WITH SECTION 306-2.5 TO 306-2.5.7 OF THE STANDARD SPECIFICATIONS.
 - THE TRENCH SOLE SHALL BE SLOPED UPWARD FROM THE MID POINT OF THE TRENCH AT A RATE OF 1% FEET HORIZONTAL TO 1 FOOT VERTICAL, PRIOR TO BACKFILL.

PROFILE, ALIGNMENT AND GRADE OF
SANITARY SEWERS P.C. 8376
 TO BE CONSTRUCTED IN PAGE 1

PIONEER BOULEVARD
PRIVATE CONTRACT NO. 8376

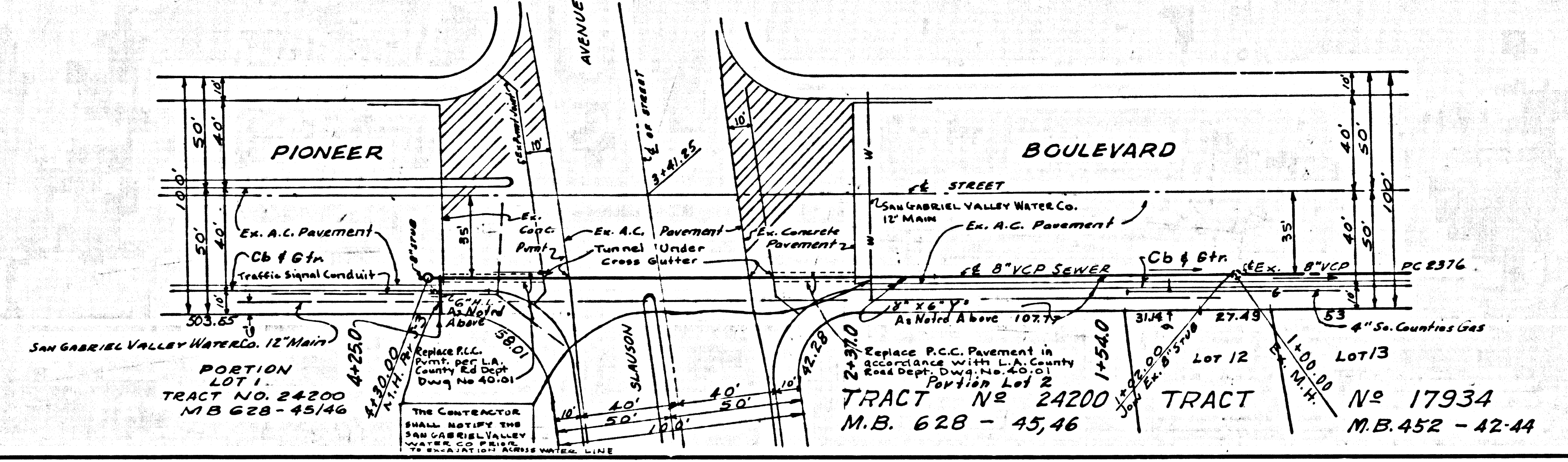
W.S. 36
 1 SHEET ; 2 PAGES
 SCALE: VERT. 1" = 4' HORIZ. 1" = 40' October 20, 1969
 PREPARED IN THE OFFICES OF
 JOHN B. ABELL
 5658 W. E. Beverly Blvd.
 Los Angeles, Calif. 90022 - Ph. 723-5812
 By: John B. Abell REG. C. E. NO. 9070

NOTE:
 GRADES TO WHICH THIS IMPROVEMENT IS TO BE CONSTRUCTED ARE SHOWN ON PLANS AND PROFILES. GRADE POINTS FOR TOP OF CURBS, CENTER LINE OF STREETS, OR CENTER LINE OF ALLEYS ARE SHOWN BY CIRCLES ON PROFILES. AT ALL POINTS BETWEEN DESIGNATED POINTS THE GRADE SHALL BE ESTABLISHED SO AS TO CONFORM TO A STRAIGHT LINE DRAWN BETWEEN SAID DESIGNATED POINTS. ELEVATIONS ARE IN FEET ABOVE U.S.C. & G.S. SEA LEVEL DATUM OF 1929.
 WORK SHALL BE CONSTRUCTED ACCORDING TO THE STANDARD SPECIFICATIONS FOR PUBLIC WORKS CONSTRUCTION AND SPECIAL PROVISIONS FOR THE CONSTRUCTION OF SANITARY SEWERS DATED FEB. 15, 1962, AS REVISED, AND SHALL BE PROTECTED ONLY IN THE PRESENCE OF THE COUNTY ENGINEER.
 BEFORE WORK CAN BE STARTED, THE CONTRACTOR MUST OBTAIN A PERMIT TO EXCAVATE IN COUNTY STREETS FROM THE L. A. COUNTY ROAD DEPT., DISTRICT OFFICE NO. 11, AND PAY A FEE TO THE COUNTY ENGINEER, ROOM 802, COUNTY ENGINEERING BUILDING, 110 WEST SECOND STREET OR..... A.G.S. 1102.3..... REGIONAL OFFICE, SUFFICIENT TO COVER THE COST OF CONSTRUCTION INSPECTION AND RECORD PLANS.
 APPROVAL OF THIS PLAN BY THE COUNTY OF LOS ANGELES DOES NOT CONSTITUTE A REPRESENTATION AS TO THE ACCURACY OF THE LOCATION OF OR THE EXISTENCE OR NON-EXISTENCE OF ANY UNDERGROUND UTILITY PIPE, OR STRUCTURE WITHIN THE LIMITS OF THIS PROJECT. THIS NOTE APPLIES TO ALL PAGES.
 IF WORK IS TO BE DONE IN A STATE HIGHWAY, A PERMIT MUST BE OBTAINED FROM THE STATE OF CALIFORNIA, DIVISION OF HIGHWAYS, 120 SOUTH BRINK STREET, LOS ANGELES, CALIFORNIA.
COUNTY OF LOS ANGELES, CALIFORNIA
 JOHN A. LAMBIE, COUNTY ENGINEER J. D. PARKHURST, CHIEF ENGINEER
 CO. SANITARY 19-13
 APPROVED BY: [Signature] REGIONAL ENGINEER DATED 10/21/69 APPROVED BY: [Signature] OFFICE ENGINEER
 CHECKED BY: [Signature] REG. C. E. NO. 15731 DATED 10/21/69
 41413
 J.N. 0370.13



P.C. 8376 PAGE 2
 No Charge For Connections

41414



TRAFFIC REQUIREMENTS
SLAUSSON AVE.
 2 lanes each direction 8:30 A.M. to 3:30 P.M.
 2 lanes each direction & left hand turn at all other times
PIONEER BLVD. SOUTH BOUND
 1 lane & left turn 8:30 A.M. to 3:30 P.M.
 2 lanes & left turn at all other times