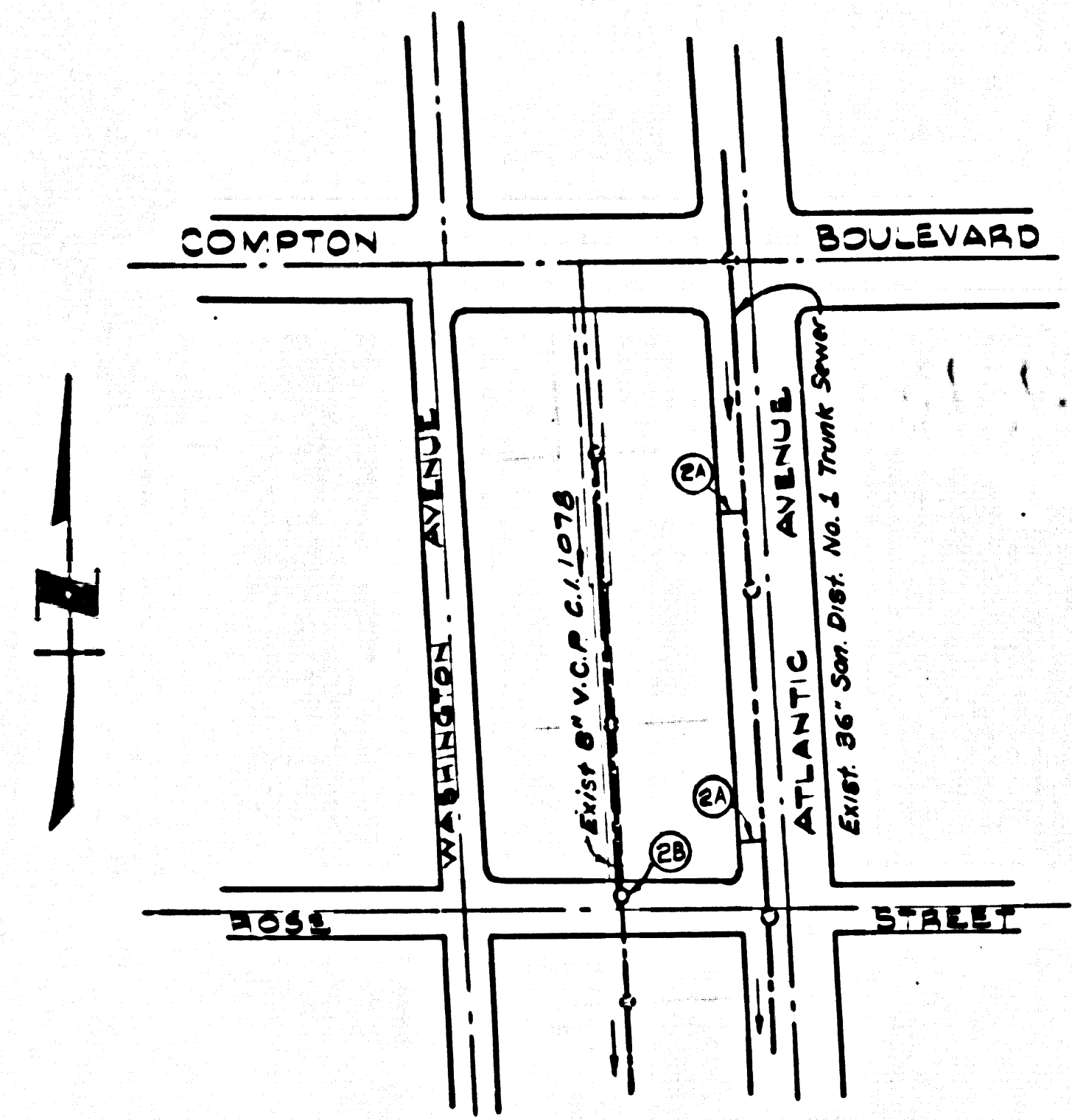


B.M. BY 1954 ELEV. 66.394
 L. & T. CO. RET. @ S.E. COR. COMPTON
 BLVD. AND ATLANTIC AVE.
 SOUTH GATE QUAD. 19.05



INDEX MAP
 SCALE: 1"=200'
 P.C. 8385
 TRACT NO 30237

- PERMIT MUST BE OBTAINED FROM COUNTY SANITATION DISTRICT FOR SADDLES AT STATIONS 119+60.00 AND 123+02.00 PRIOR TO CONNECTION.
- SADDLE CONNECTIONS TO BE INSTALLED PER COUNTY SANITATION DISTRICT STANDARD 5-4-88.

County Sanitation Districts shall be notified prior to the following so that required inspection can be made (Phone 889-2006 or a 636-8087)

Acceptance of the project.
 No connections for the disposal of industrial wastes shall be made to sewers shown on these drawings without written permission from the Chief Engineer and General Manager of the County Sanitation Districts.

FIRESTONE BLDG. DIST. NO. 1

- NOTES:
- HOUSE LATERALS TO BE CONSTRUCTED WITH INVERTS AT PROPERTY LINE 4 FEET BELOW CURB GRADE EXCEPT AS NOTED.
 - PROVIDE STAKES ON THE PROPERTY LINE OR PROPERTY LINES PRODUCED AT RIGHT ANGLES TO THE SEWER LINE AT THE CENTER LINE OF EACH MANHOLE.
 - NO REPRESENTATIVE OF THE COUNTY ENGINEER WILL SURVEY OR LAY OUT ANY PORTION OF THE WORK.
 - THE PRIVATE ENGINEER SHALL FURNISH THE COUNTY ENGINEER WITH GRADE SHEETS AND STATIONING FOR ALL HOUSE LATERALS AND "T" OR "T" BRANCHES AND SHALL PROVIDE STAKES FOR THEM AT THEIR PROPER LOCATIONS WITH STATIONING PLAINLY MARKED. ALL HOUSE LATERALS SHALL BE CONSTRUCTED IN A STRAIGHT ALIGNMENT AT RIGHT ANGLES FROM THE MAIN LINE SEWER EXCEPT AS SHOWN ON THE PLANS. HOUSE LATERALS FROM CHIMNEYS SHALL NOT HAVE AN ANGLE OF LESS THAN 45° WITH THE MAIN LINE SEWER. ANY CHANGE IN ALIGNMENT SHALL BE REQUESTED BY THE PRIVATE ENGINEER.
 - THE PRIVATE ENGINEER SHALL FURNISH THE HOUSE LATERAL DEPTH AT THE PROPERTY LINE BELOW THE TOP OF CURB ELEVATION FOR EACH HOUSE LATERAL ON THE GRADE SHEET.
 - NO REVISIONS SHALL BE MADE IN THESE PLANS WITHOUT THE APPROVAL OF THE COUNTY ENGINEER.
 - THE CONTRACTOR SHALL NOTIFY THE CONSTRUCTION DIVISION BY TELEPHONE, MADISON 9-4747, EXT. 8158, AT LEAST TWENTY-FOUR HOURS BEFORE STARTING ANY WORK UNDER THIS CONTRACT.
 - ALL STRUCTURES SHALL BE EITHER BRICK MANHOLES PER 5-3 OR PRECAST CONCRETE MANHOLES PER 5-3 OR 5-4, EXCEPT AS NOTED.
 - "T" OR "T" BRANCHES MAY BE USED FOR CONNECTIONS TO MAINLINE SEWERS EXCEPT AS NOTED.
 - MANHOLE TOPS IN UNIMPROVED AREAS OF WAYS TO BE 24 INCHES ABOVE FINISHED GRADE.
 - USE STEEL STRENGTH PIPE. ALL PIPE IS STANDARD DEPTH EXCEPT AS NOTED.
 - VENTILATED CLAY PIPE JOINTS SHALL BE TYPE "T", "F", OR "G" PER STANDARD SPECIFICATIONS SECTION 308-3.
 - IF A POWER POLE IS WITHIN THREE FEET OF THE SEWER, THE SEWER SHALL BE ENCASED, PER 5-25, TWO FEET ON EACH SIDE FROM THE POINT OF INTERFERENCE.
 - IF DURING THE COURSE OF CONSTRUCTION IT IS DETERMINED THAT THERE IS LESS THAN FOUR FEET OF COVER OVER THE TOP OF A MAIN LINE OR HOUSE LATERAL V.C.P. SEWER WHICH IS NOT INDICATED ON THE PLANS, THE PIPE SHALL BE ENCASED PER 5-25, UNLESS OTHERWISE APPROVED BY THE COUNTY ENGINEER.
 - RESURFACE ALL TRENCHES WITHIN PAVED AREAS TO MEET L.A. COUNTY ROAD DEPT. OR CALIFORNIA STATE HIGHWAY REQUIREMENTS IN ACCORDANCE WITH PERMITS.
 - SEWERS TO BE TESTED FOR LEAKAGE PER SECTION 308-3.17 OF THE STANDARD SPECIFICATIONS.
 - JOINTS BETWEEN CAST IRON PIPE AND VENTILATED CLAY PIPE SHALL BE MADE WITH A RUBBER SLEEVE JOINT, TYPE "C" OR "W", (WITH BUSHING IF NECESSARY) PER STANDARD SPECIFICATIONS, SECTION 308-3.

THE FOLLOWING LATEST REVISED STANDARD PLANS ON FILE IN THE OFFICE OF THE COUNTY ENGINEER SHALL APPLY IN THE CONSTRUCTION OF THIS PROJECT.

LEGEND	5.1
MINIMUM PUBLIC SAFETY REQUIREMENTS	5.2
BRICK MANHOLE	5.3
NON-REINFORCED PRECAST CONCRETE MANHOLE	5.4
REINFORCED PRECAST CONCRETE MANHOLE	5.5
MANHOLE FRAME AND COVER	5.6
STANDARD MANHOLE SET	5.7
BEDDING FOR SEWER PIPE	5.8
CRADLING AND ENCASEMENT	5.9
WYS ON THE SUPPORT	5.10
ALLOWABLE TRENCH WIDTHS	5.11

PROFILE, ALIGNMENT AND GRADE OF
 SANITARY SEWERS P.C. 8385
 PAGE 1

TRACT NO 30237

PRIVATE CONTRACT NO. 8385

W.S. 32
 1 SHEET ; 2 PAGES
 SCALE: VERT. 1"=4'
 HORIZ. 1"=40'
 NOV, 1969
 PREPARED IN THE OFFICES OF
 WAGNER-WEBA ASSOCIATES INC.
 CIVIL ENGINEERS - LAND SURVEYORS
 6305 WOODMAN AVE., VAN NUYS, CALIF.
 REG. C. E. NO. 11168

NOTES:
 GRADES TO WHICH THE IMPROVEMENT IS TO BE CONSTRUCTED ARE SHOWN ON PLANS AND PROFILES. GRADE POINTS FOR TOP OF CURB, CENTER LINE OF STREETS, OR CENTER LINE OF ALLEYS ARE SHOWN BY CIRCLES ON PROFILES. ALL POINTS BETWEEN BEING-PLATE POINTS THE GRADE SHALL BE ESTABLISHED SO AS TO CONFORM TO A STRAIGHT LINE DRAWN BETWEEN SAID DESIGNATED POINTS. ELEVATIONS ARE IN FEET ABOVE U.S.C. & G.S. SEA LEVEL DATUM OF 1929.
 PROVISIONS FOR THE CONSTRUCTION OF SANITARY SEWERS DATED JAN. 5, 1969 AS REVISED, AND SHALL BE PROSECUTED ONLY IN THE PRESENCE OF THE COUNTY ENGINEER.
 BEFORE WORK CAN BE STARTED, THE CONTRACTOR MUST OBTAIN A PERMIT TO EXCAVATE IN COUNTY STREETS FROM THE L.A. COUNTY ROAD DEPT., DISTRICT OFFICE NO. 1, AND PAY A FEE TO THE COUNTY ENGINEER, ROOM 238, COUNTY ENGINEERING BUILDING, 108 WEST SECOND STREET OR P.A.R.B. 164889, CENTINELA VALLEY REGIONAL OFFICE, SUFFICIENT TO COVER THE COST OF CONSTRUCTION INSPECTION AND RECORD PLANS.
 APPROVAL OF THIS PLAN BY THE COUNTY OF LOS ANGELES DOES NOT CONSTITUTE A REPRESENTATION AS TO THE ACCURACY OF THE LOCATION OF OR THE EXISTENCE OR NON-EXISTENCE OF ANY UNDERGROUND UTILITY PIPE, OR STRUCTURE WITHIN THE LIMITS OF THE PROJECT. THIS NOTE APPLIES TO ALL PAGES.
 IF WORK IS TO BE DONE IN A STATE HIGHWAY, A PERMIT MUST BE OBTAINED FROM THE STATE OF CALIFORNIA, DIVISION OF HIGHWAYS, 130 SOUTH SPRING STREET, LOS ANGELES, CALIFORNIA.

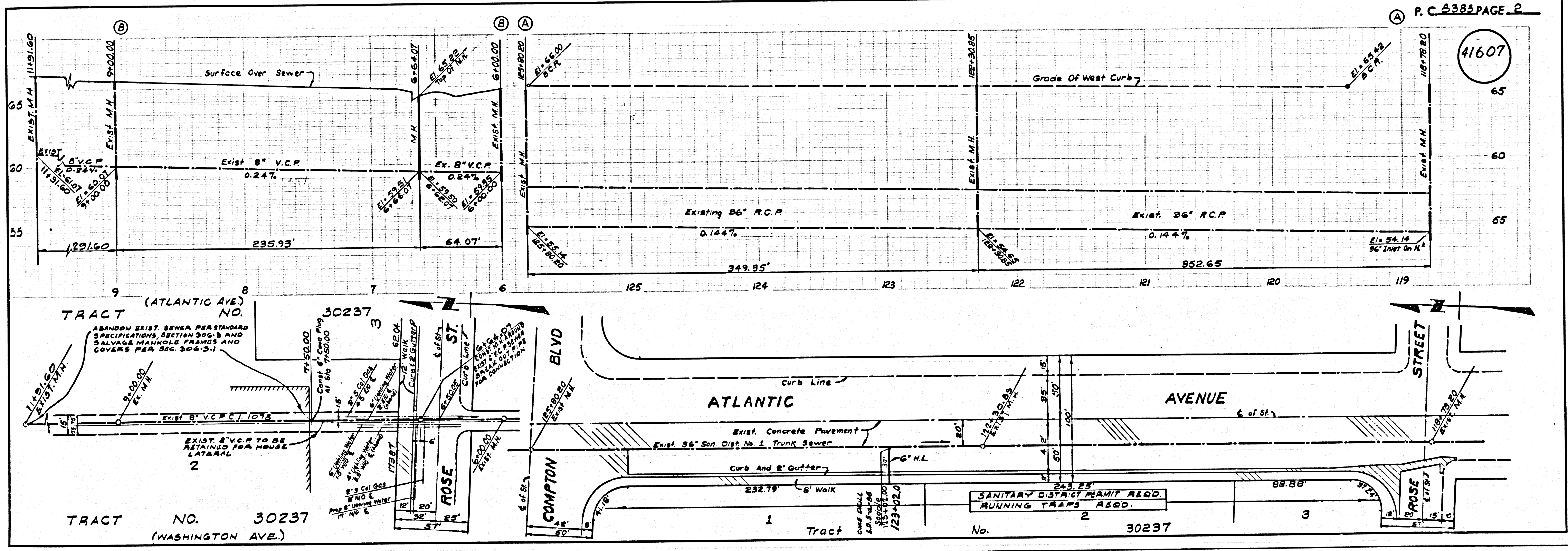
COUNTY OF LOS ANGELES, CALIFORNIA
 JOHN A. LAMBIE, COUNTY ENGINEER J. D. PARKHURST, CHIEF ENGINEER
 APPROVED BY: *[Signature]* DATE: 11/2/69 APPROVED BY: *[Signature]* DATE: 11/7/69
 REGIONAL ENGINEER DATE: OFFICE ENGINEER

CHECKED BY: *[Signature]* DATE: 11/7/69
 REG. CE NO. 10453

COLLECT CHARGES AS INDICATED

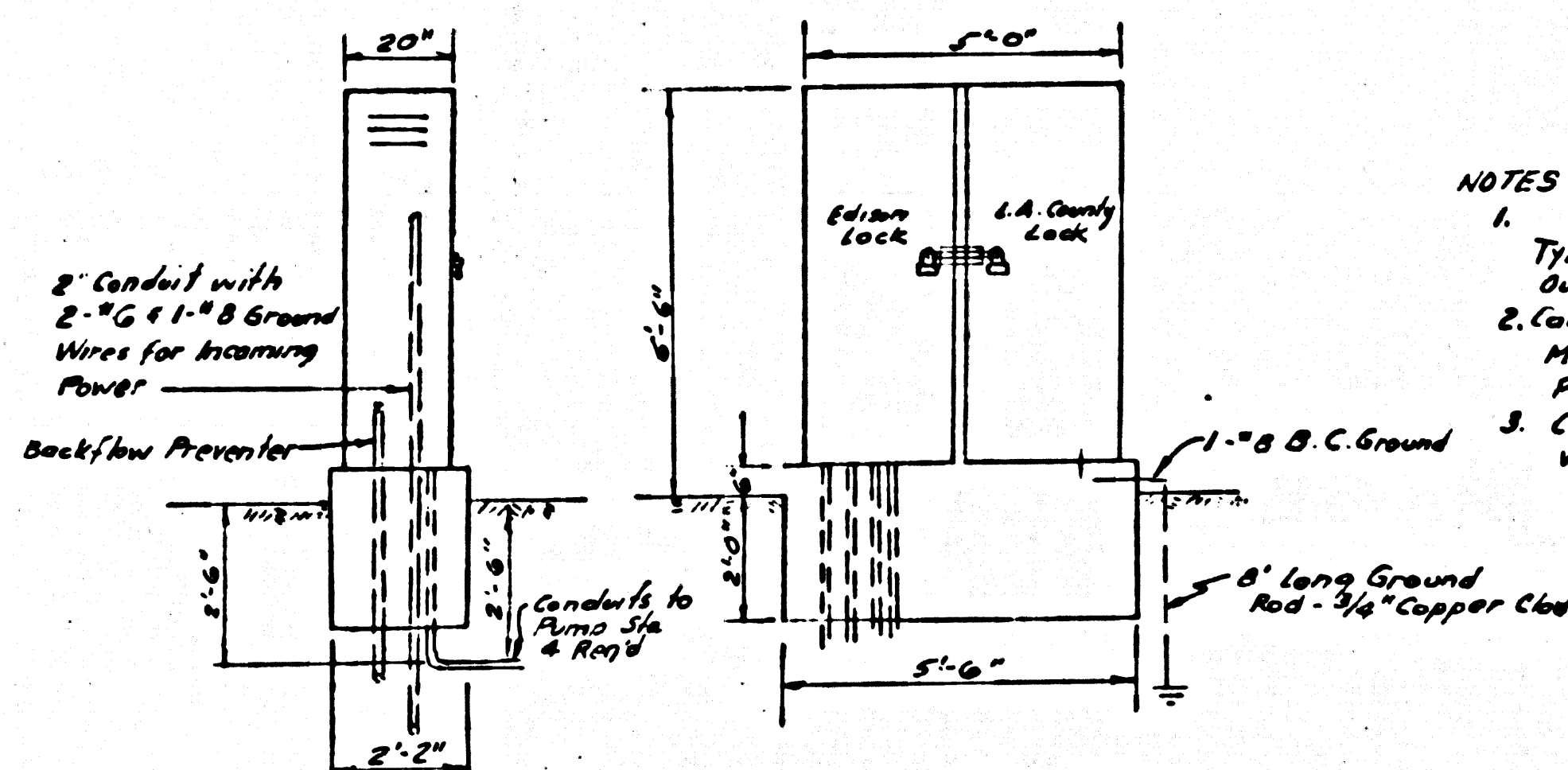
Revision:
 Eliminated H.L. to Lot 3
 Approved by *[Signature]* 3/2/70
 REG. CE NO. 10453

41606

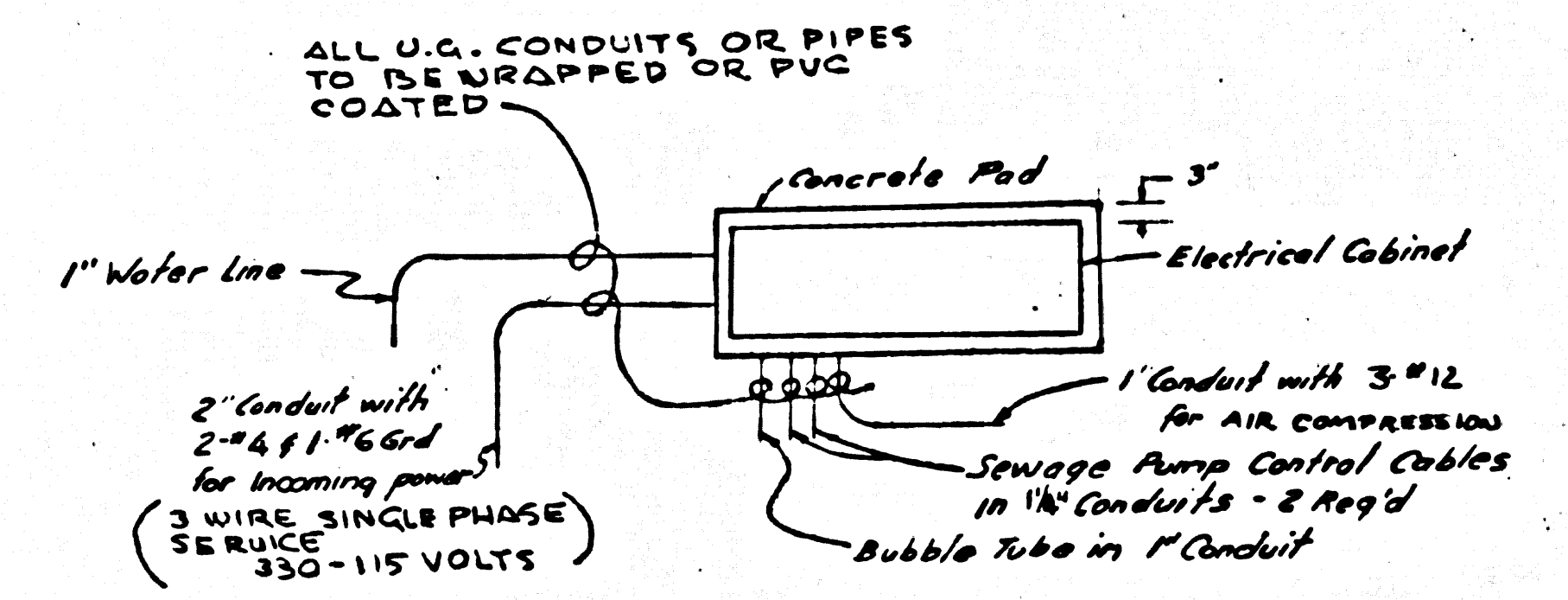


P.C. 8385 PAGE 2

41607

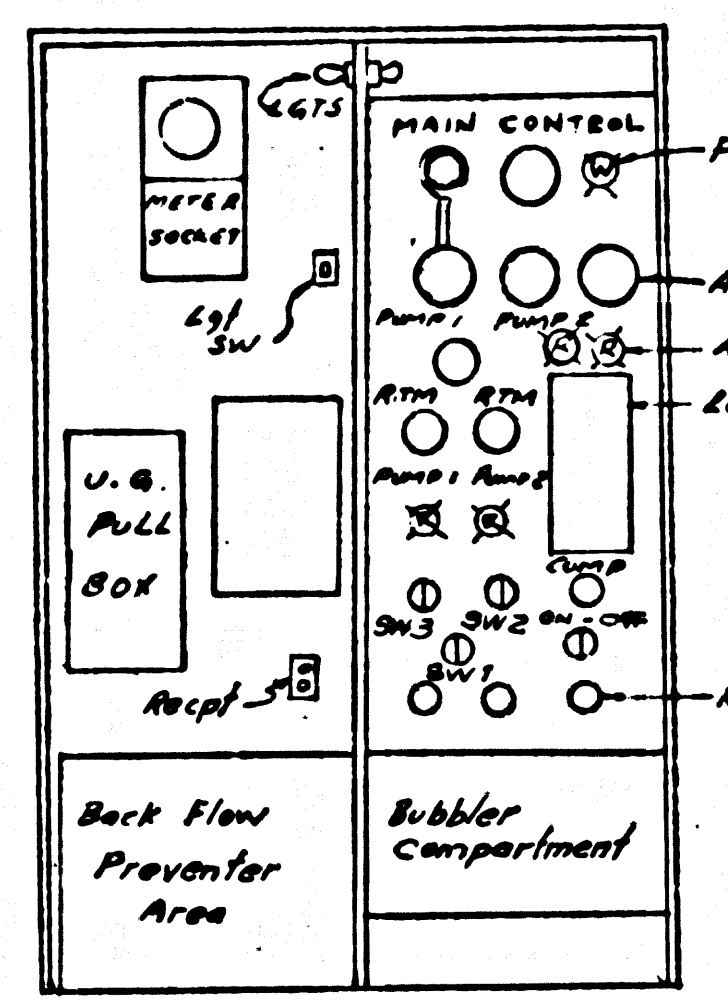


ELECTRICAL CABINET ELEVATION
SCALE: 1/8" = 1'-0"

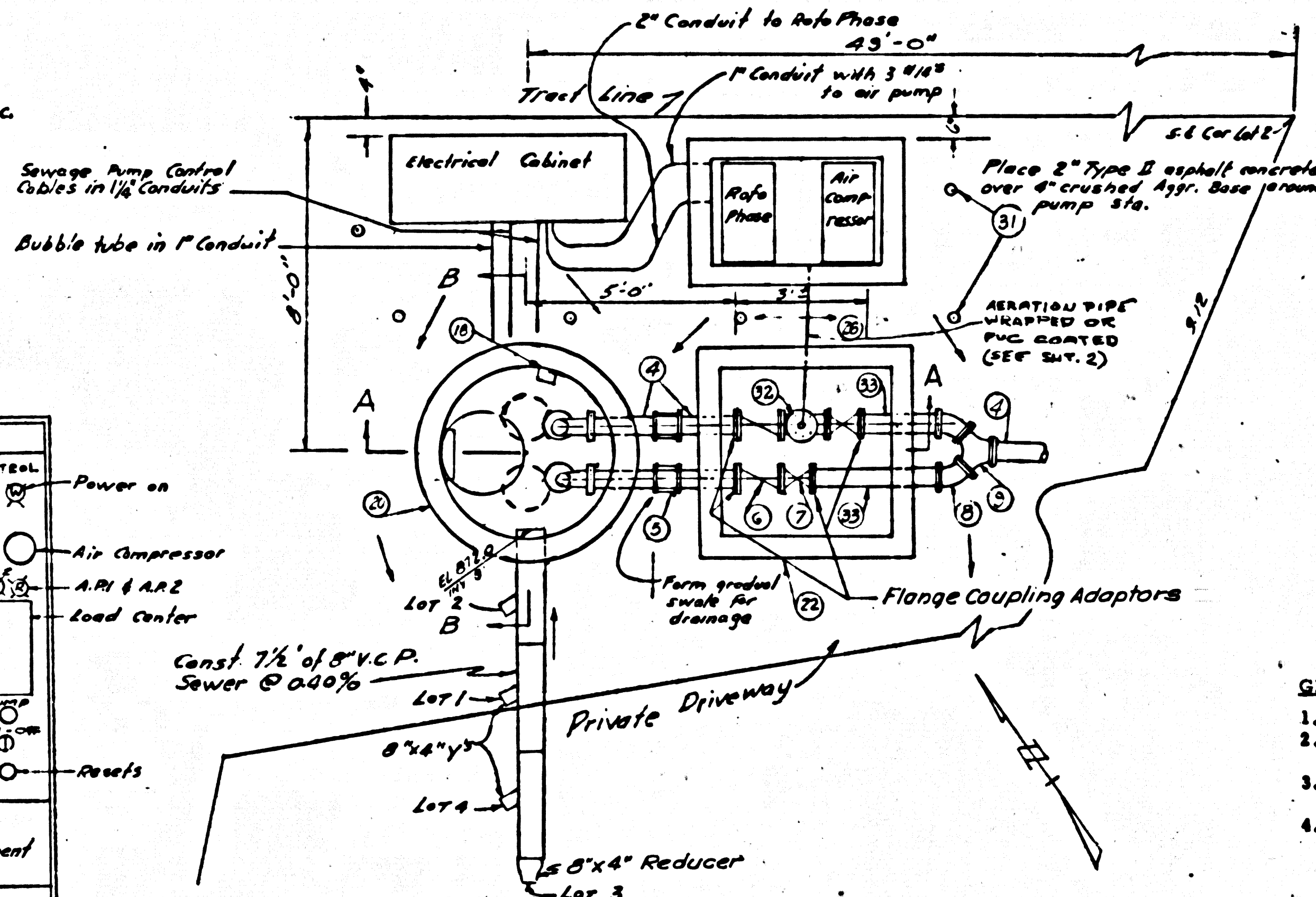


ELECTRICAL CABINET PLOT PLAN
SCALE: 3/8" = 1'-0"

- NOTES:
1. Control Panel Nema Type 3R Enclosure, MGA. with Outer & Inner Doors.
 2. Cabinet to be floor standing, mounted on a Reinforced Conc. Pad with 4-1/2" Balls.
 3. Concrete pad reinforced with 4 # Bars, 12" O.C., B.W.



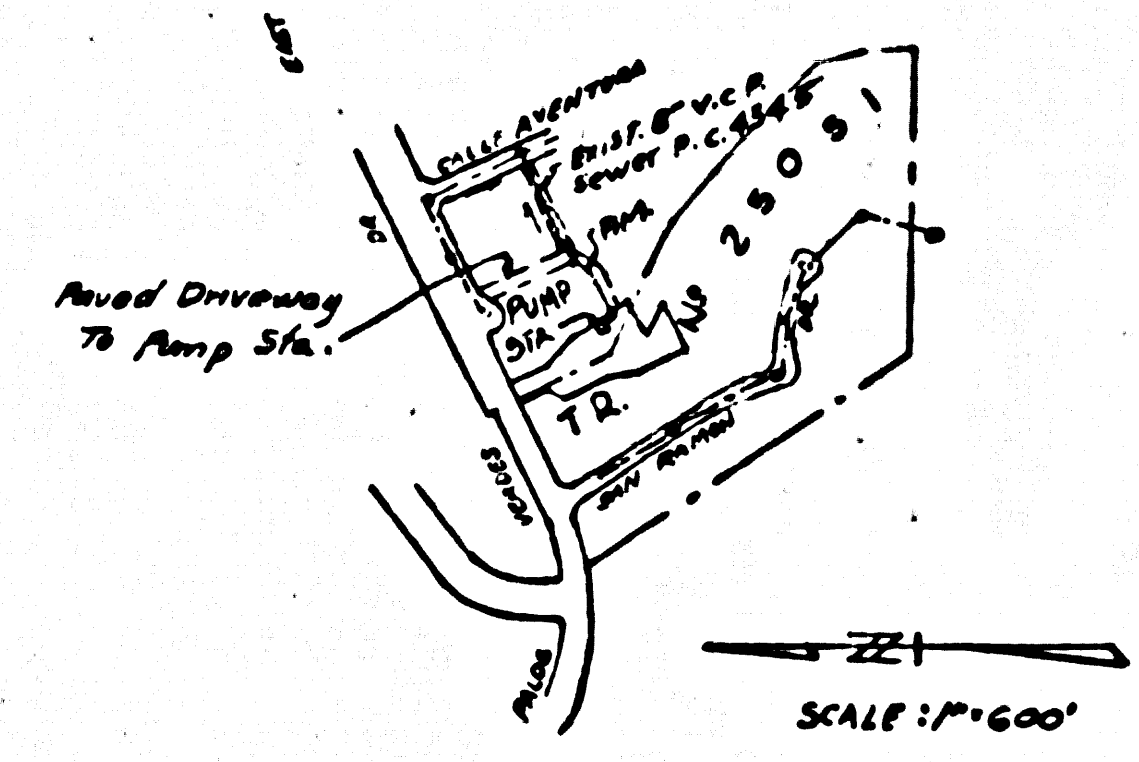
CONTROL PANEL DETAIL



PUMP STATION PLOT PLAN
SCALE: 3/8" = 1'-0"

The following latest revised standard plans in the office of the County Engineer shall apply in the construction of this project:

Legend	B-1
Minimum Public Safety Requirements	B-2
Standard Manhole Step	B-17
Bedding for Sewer Pipe	B-21
Credling and Encasement	B-23



INDEX MAP
W.S. 27

GENERAL NOTES:

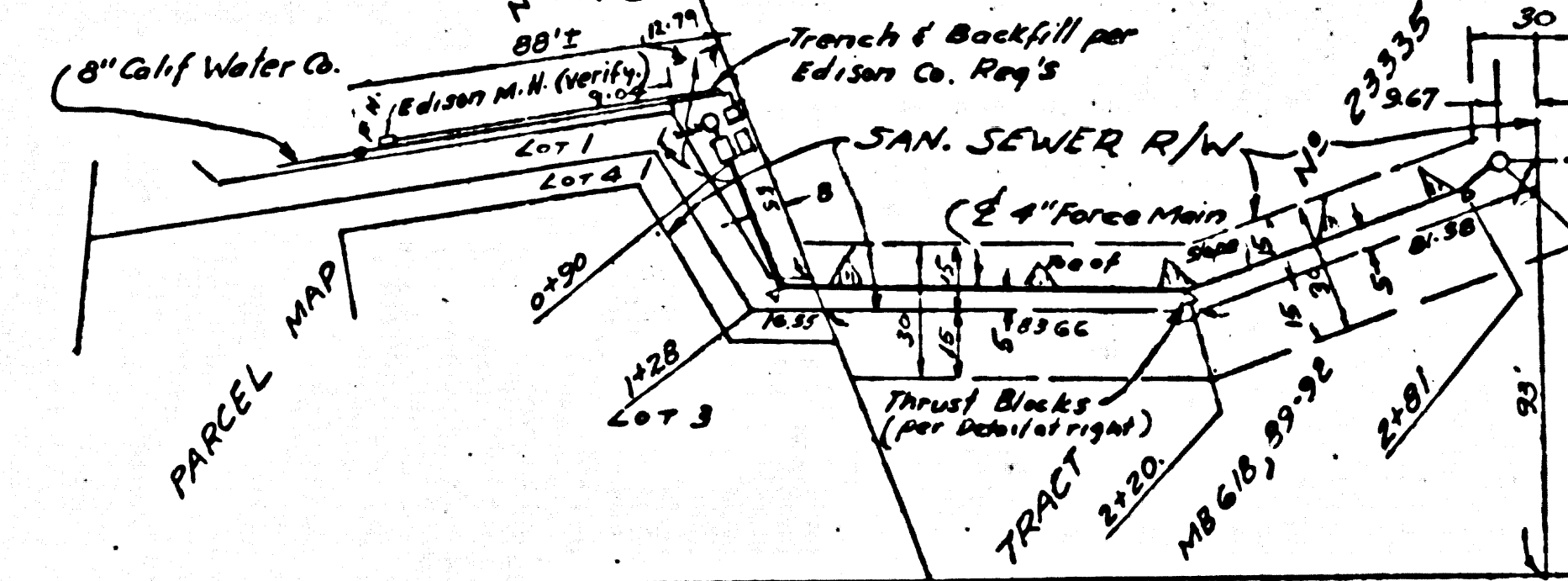
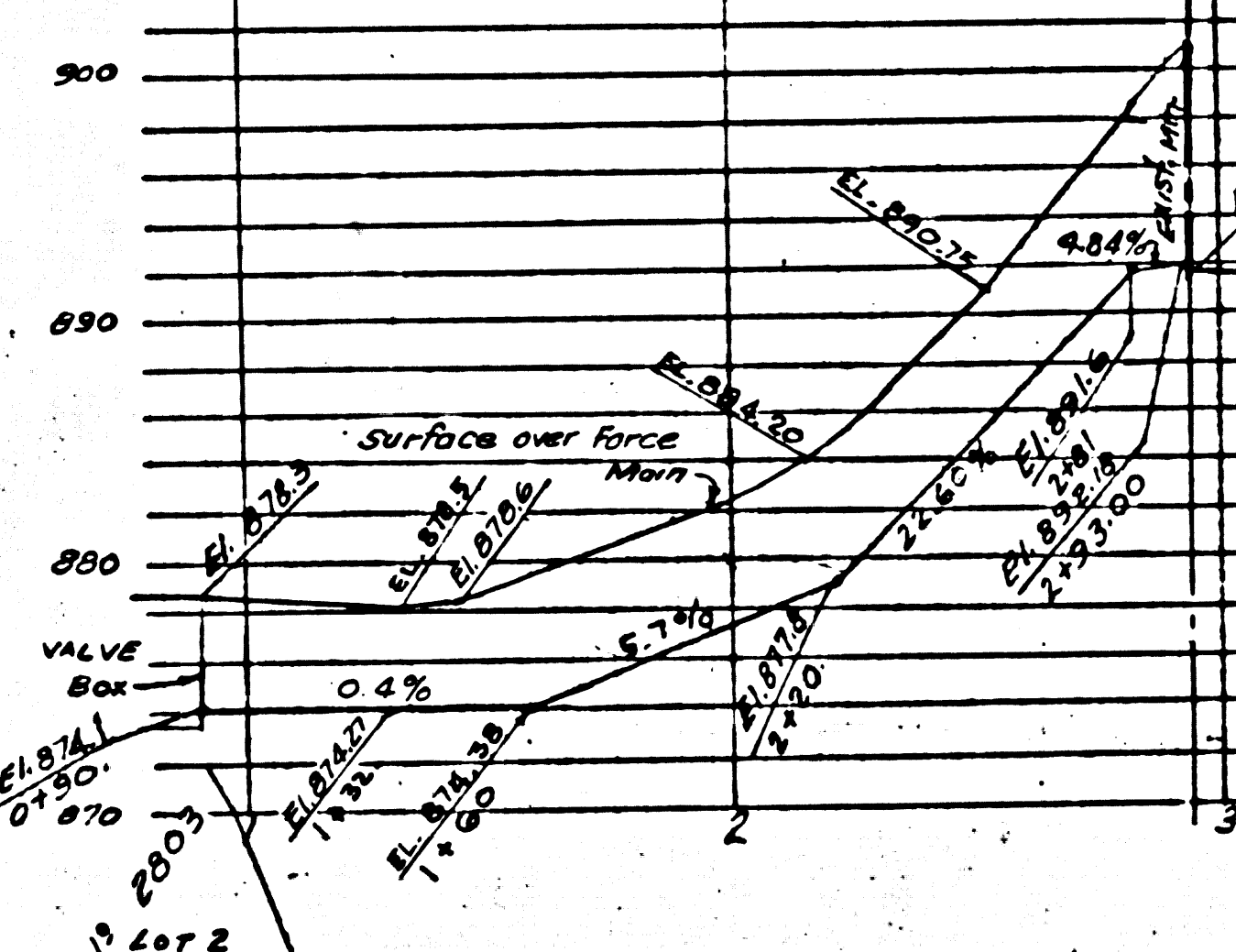
1. Elevations are in feet above U.S.C. & G.S. sea level datum of 1929.
2. No revisions shall be made on these plans without the approval of the County Engineer.
3. Refer to Section 7-10.4.1 of the Standard Specifications regarding safety orders.
4. Grades to which this improvement is to be constructed are shown on plans and profiles. Grade points for center line of force main are shown by circles on profiles at all points between designated points. The grade shall be established so as to conform to a straight line drawn between said designated points.
5. No representative of the County Engineer will survey or layout any portion of the work.

CONSTRUCTION NOTES:

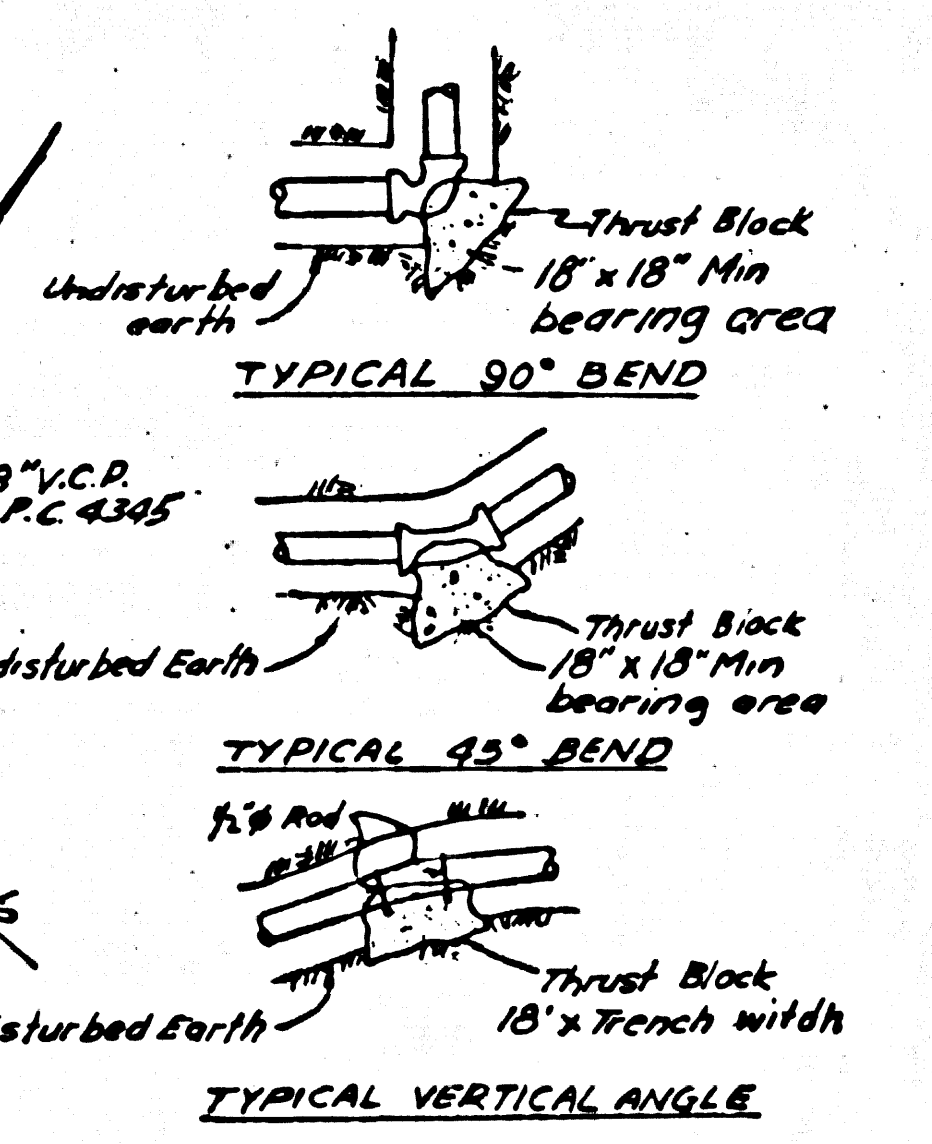
1. Sewers to be tested for leakage per Sec. 306-2.3.7 of the Standard Specifications.
2. Work shall be constructed according to the specifications for Public Works Construction (1970 edition) with 1971-1972 supplements and County Engineer special provisions for the construction of sanitary sewers dated April 10, 1972 and shall be prosecuted only in the presence of the County Engineer.
3. The contractor shall notify the construction division by telephone (974-7283) at least twenty-four hours before starting any work under this contract.

B.M. BY 6001 E.L. 911.416
C.S. 1/4" E.C. 12" M.B.C.R. @ N.E. Cor.
Public Works Div. E. Fieldman
35' 2" N. & 38' 2" E. C/L. int. R.V. Quad. 1970

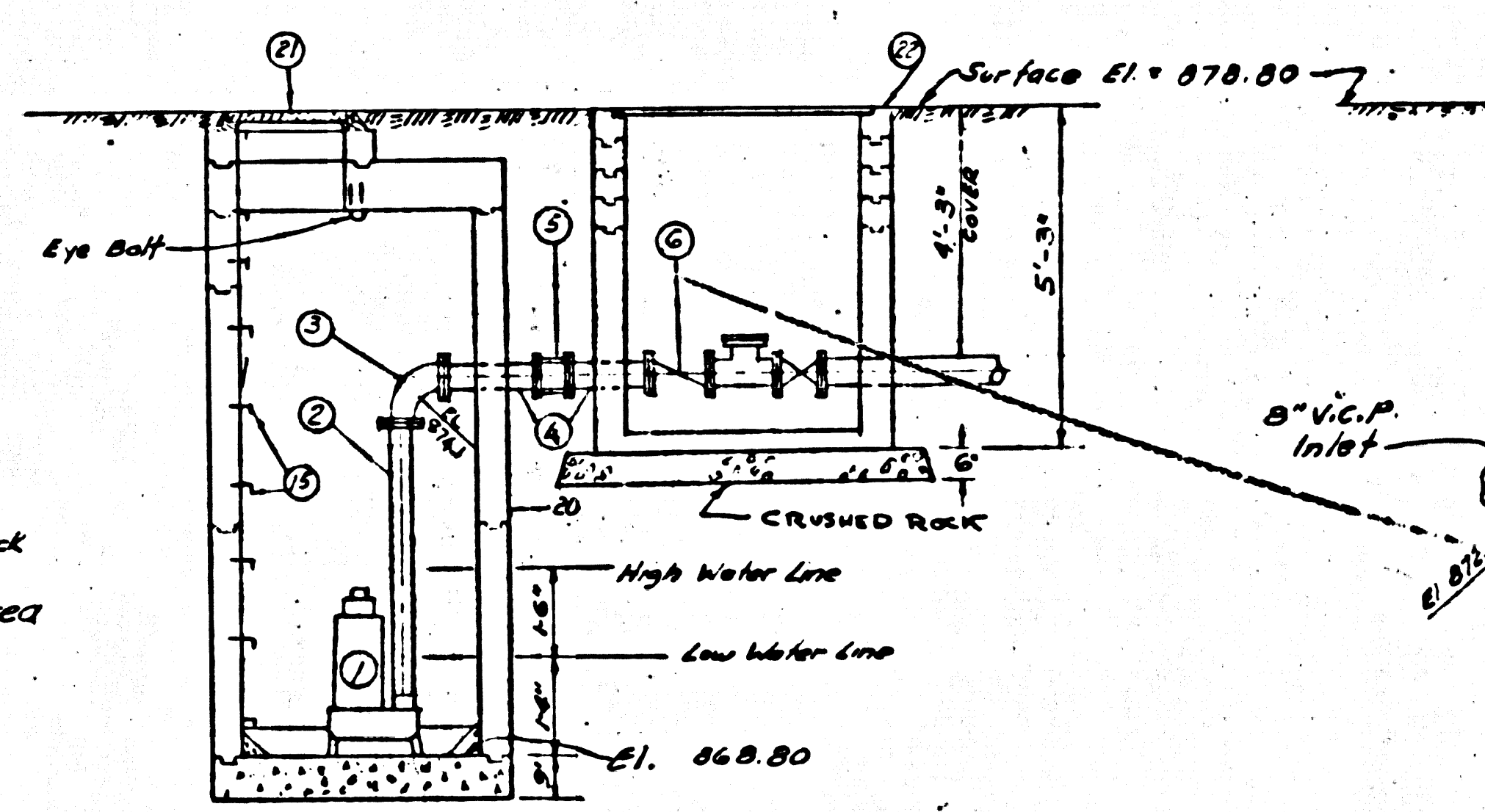
DOUBLE SCALE



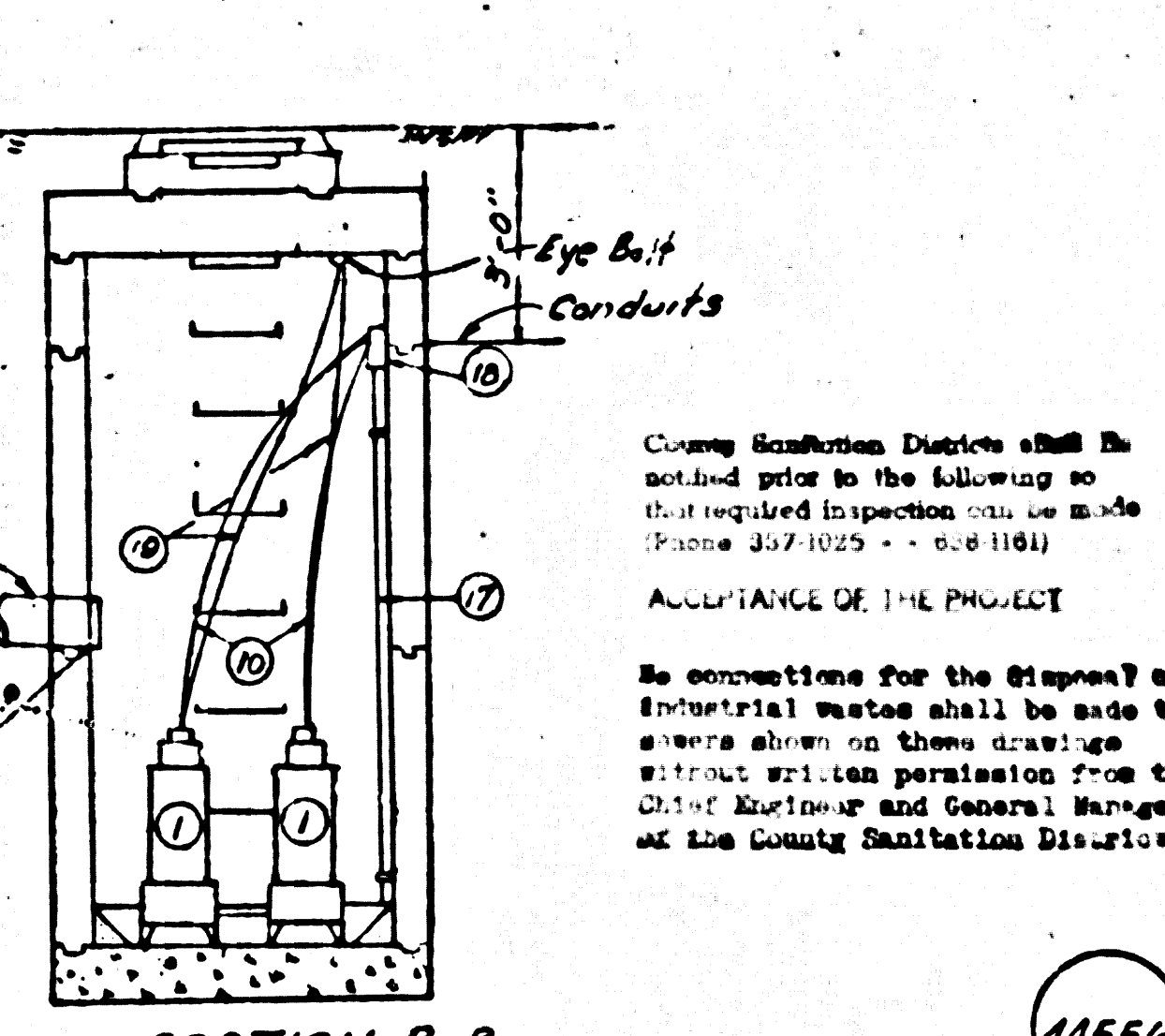
FORCE MAIN PLAN & PROFILE
SCALE: 1" = 40' Horiz
1" = 8' Vert.



TYPICAL CONC THRUST BLOCKS



SECTION A-A
SCALE: 1/8" = 1'-0"



SECTION B-B
SCALE: 1/8" = 1'-0"

County Engineer's Office shall be advised prior to the following so that required inspection can be made (Phone 974-7025 - ext. 1011)

ACCEPTANCE OF THE PROJECT

In connection with the placement of industrial wastes shall be made in accordance with these drawings without written permission from the Chief Engineer and General Manager of the County Sanitation Division.

14556

PRIVATE CONTRACT N° 8885

SEWAGE LIFT STATION

PARCEL MAP N° 2803

PREPARED IN THE OFFICE OF SIKAND ENGINEERING ASSOC. CONSULTING ENGINEERS 15205 BURBANK BLVD., VAN NUYS, CALIF. TEL. (213) 787-9550 ZIP 91401

APPROVED BY: [Signature] DATE: 11/15/73

CHECKED BY: [Signature] DATE: 11/15/73

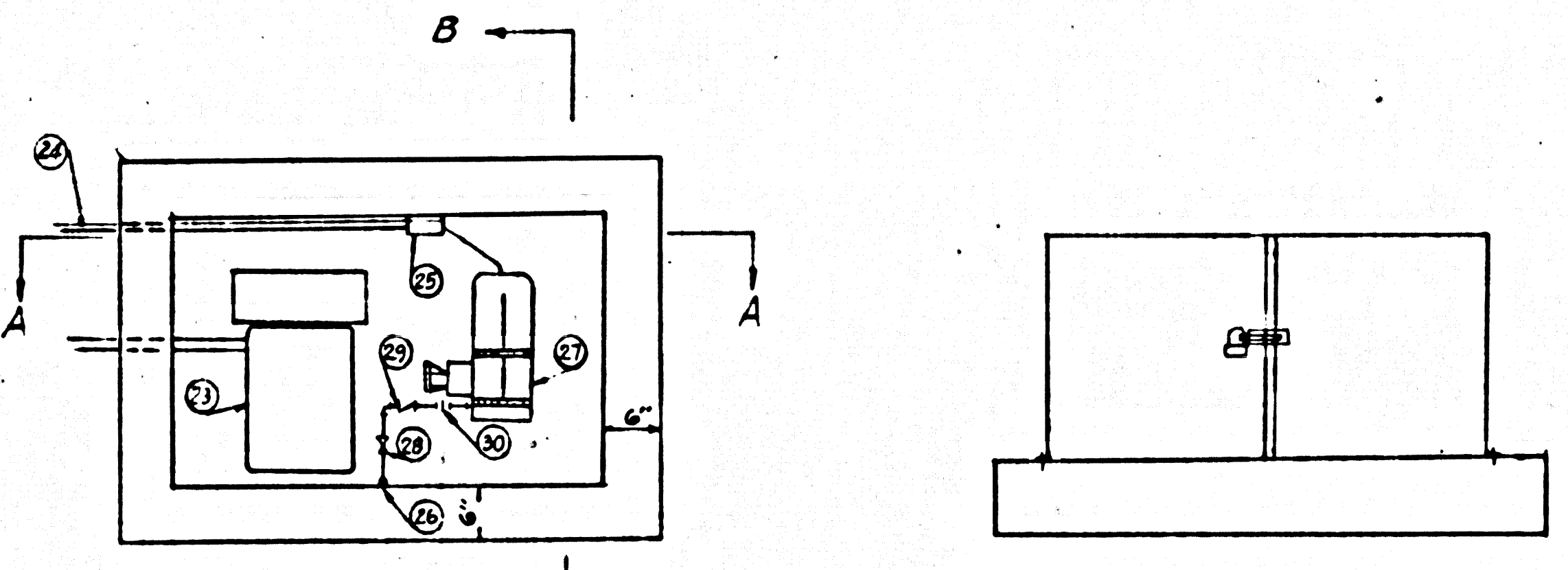
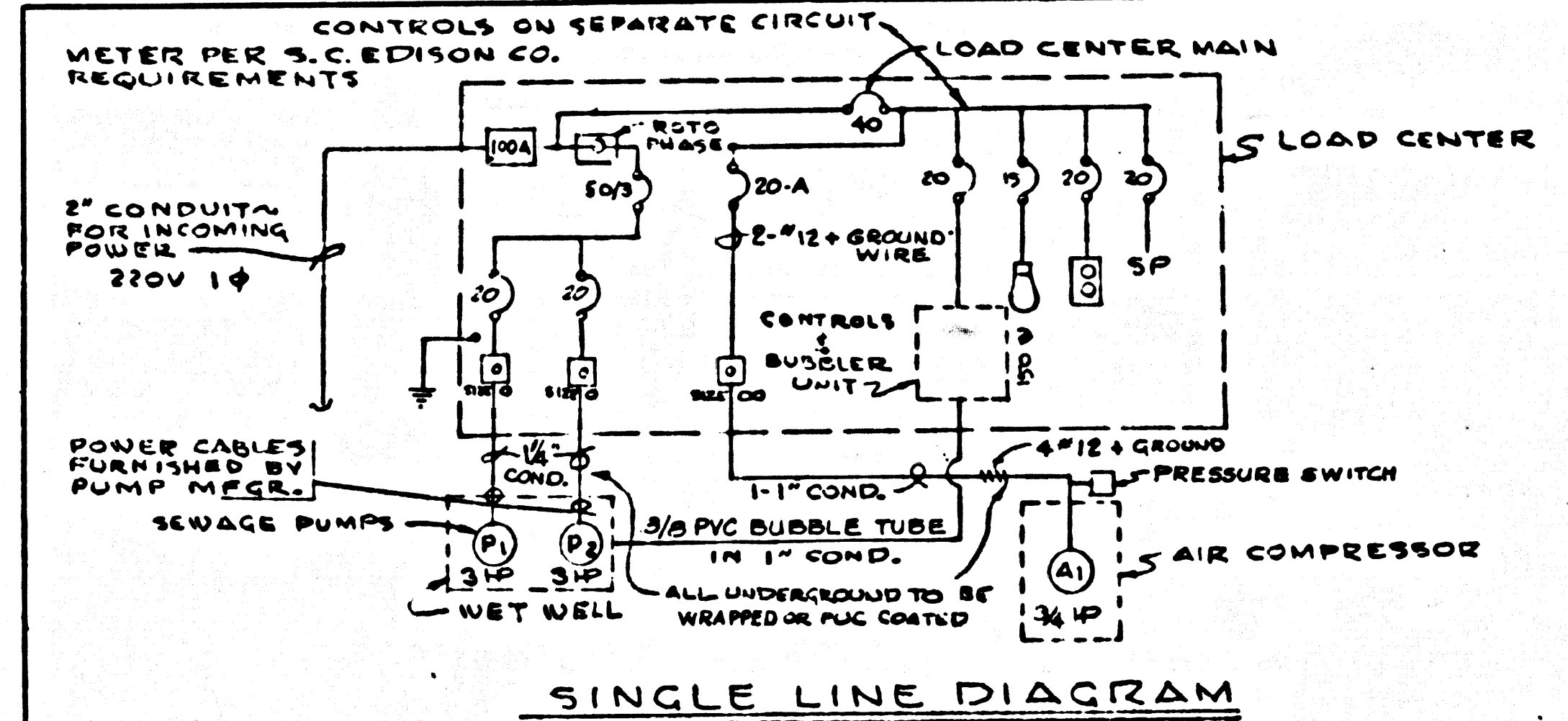
COUNTY OF LOS ANGELES, CALIFORNIA
APPROVED BY: HARVEY T. BRADY, J.D. COUNTY ENGINEER
ASST. DIV. ENGINEER
OFFICE ENGINEER

PREPARED IN THE OFFICE OF SIKAND ENGINEERING ASSOC. CONSULTING ENGINEERS 15205 BURBANK BLVD., VAN NUYS, CALIF. TEL. (213) 787-9550 ZIP 91401

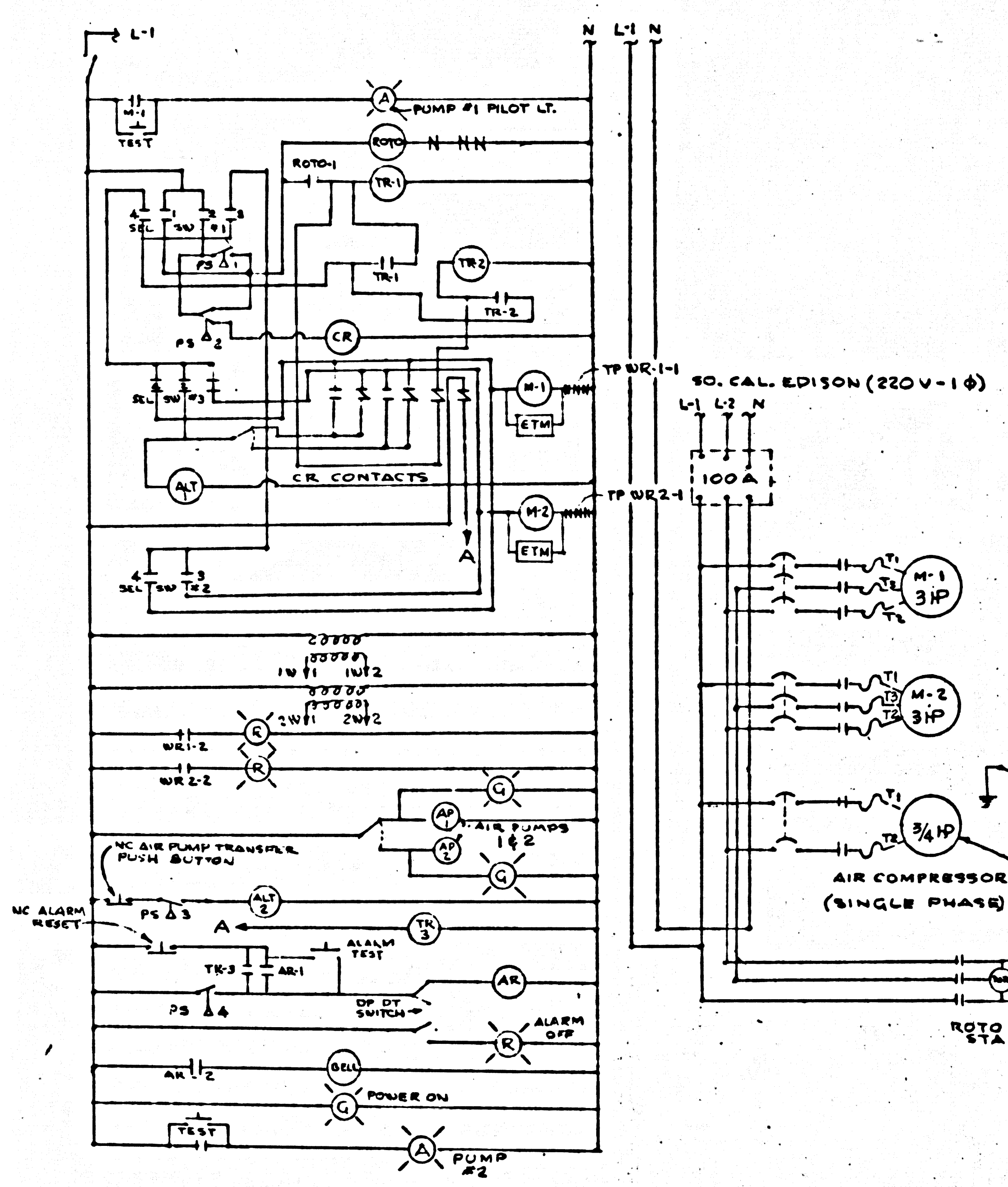
APPROVED BY: [Signature] DATE: 11/15/73

CHECKED BY: [Signature] DATE: 11/15/73

SHEET 1 OF 2 SHEETS

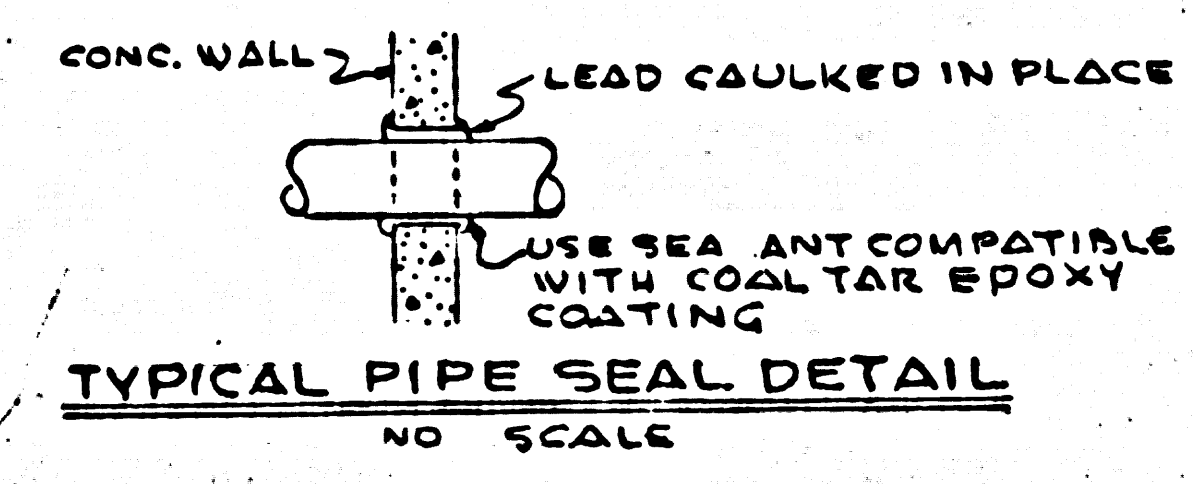


NOTES:
 1. ROTO PHASE CABINET TO BE 14 G.G. WITH DOORS AS SHOWN.
 2. CABINET TO BE FLOOR STANDING. MOUNTED ON A REINFORCING CONG. PAD WITH 4" x 12" BOLTS.
 3. CONCRETE PAD REINFORCED WITH #4 BARS, 12" O.C. B.W.
 4. PROVIDE LOUVERS AT EACH END FOR VENTILATION (2" MIN. OVERALL DIMENSION 12" CLEAR MAX. DIMENSION BETWEEN LOUVERS.

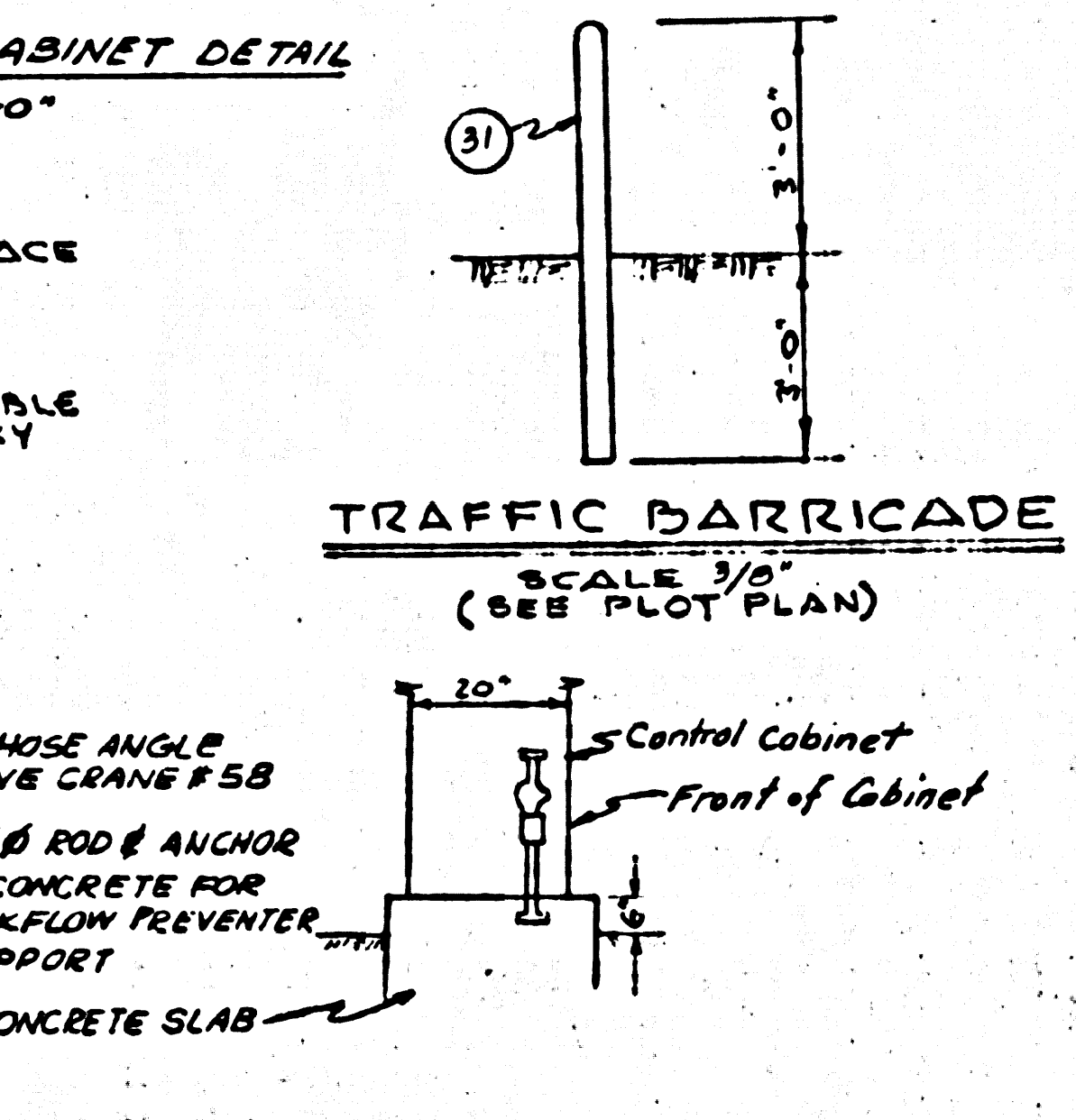


SCHEMATIC ELECTRICAL DIAGRAM

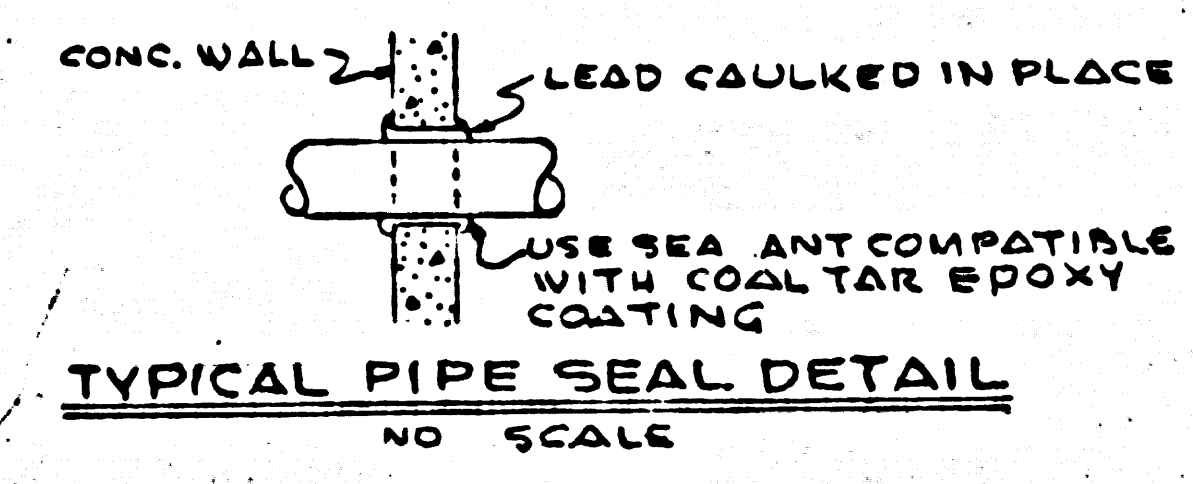
- TR 1 & TR 2 - TIME DELAY RELAYS - 5 SECONDS TO CLOSE ON ENERGIZATION
- TR 3 - TIME DELAY RELAY - 5 MINUTES TO CLOSE ON ENERGIZATION
- ROTO - ROTO PHASE MAGNETIC STARTER
- M-1 & M-2 - MOTOR NO. 1 & 2 MAGNETIC STARTERS
- ALT - ALTERNATE RELAYS - SWITCHES ON DE-ENERGIZATION
- C.R. - 6-POLE CONTROL RELAY - 4 POLES - NO. 1 - 2 POLES - NO. 2
- SEL. SW. 1 - SELECTOR SWITCH #1
- SEL. SW. 2 - " " #2 } SEE SELECTOR SWITCH LAYOUT
- SEL. SW. 3 - " " #3
- PS #1 & PS #2 - DIFFERENTIAL PRESSURE SWITCH - CLOSE ON RISING PRESSURE
- PS #3 - " " - CLOSES ON FALLING PRESSURE
- AR - ALARM RELAY - COMB. HIGH OR LOW WATER ACTIVATED
- A - CONNECTION FROM CR RELAY TO ALARM RELAY
- PS #4 - DIFFERENTIAL PRESSURE SWITCH - SWITCHES ON FALLING PRESSURE
- TP - THERMAL PROTECTIVE DEVICES - CONN. THRU EA. MOTOR, TH-T-2 & T-3
- ETM - ELAPSED TIME METER - 0 DIGIT - TO REGISTER HRS & TENTHS OF HRS.
- IN-1 & IN-2 & 2W1 & 2W2 - MONITOR & SENSING PROBE CONN. TO MOTORS 1 & 2
- WR-1 & WR-2 - CONTACTS WARWICK RELAY NO. 2
- WR-1 & WR-2 - CONTACTS WARWICK RELAY NO. 2



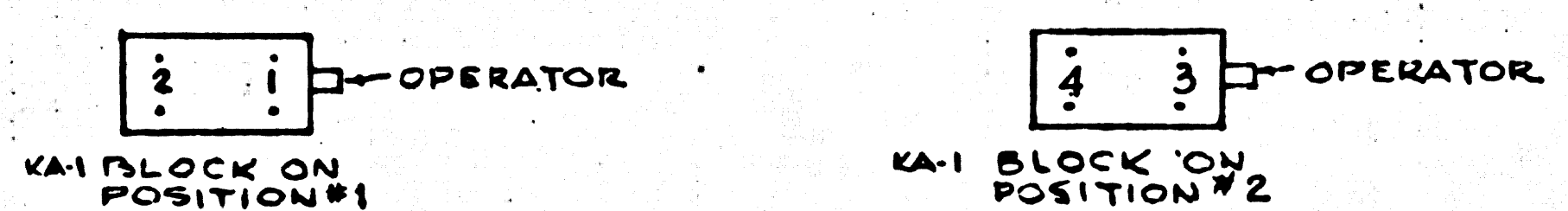
TYPICAL PIPE SEAL DETAIL
NO SCALE



BACKFLOW PREVENTER DETAILS
SCALE 1/2" = 1'-0"



TRAFFIC BARRICADE
SCALE 3/8" = 1'-0" (SEE PLOT PLAN)



SELECTOR SWITCH LAYOUT

- | LEGEND: AUTO - OFF - HAND
CONSISTS OF 1 SQUARE 'KS-47B OPERATOR & 2 - KAI BLOCKS | LEGEND: NO. 1 - OFF - NO. 2
CONSISTS OF 1 SQUARE 'KS-47B OPERATOR & 1 KAI BLOCK (POSITION #2) | LEGEND: NO. 1 - ALT - NO. 2
CONSISTS OF 1 SQUARE 'D OPERATOR 'KS-47B & 2 KAI BLOCKS |
|---|--|--|
| CONTACT OPERATION SEQUENCE:
AUTO: 1 & 3 OPEN
2 & 4 CLOSED
OFF: 1 & 3 OPEN
2 & 4 OPEN
HAND: 1 & 3 CLOSED
2 & 4 OPEN | CONTACT OPERATION SEQUENCE:
NO. 1: # 4 CLOSED
3 OPEN
OFF: ALL CONTACTS OPEN
NO. 2: # 3 CLOSED
4 OPEN | CONTACT OPERATION SEQUENCE:
NO. 1 - # 4 CLOSED
2 (1) OPEN
ALT - # 2 CLOSED
1 (4) OPEN
NO. 2 - # 1 CLOSED
4 OPEN |

NO.	Q	ITEM DESCRIPTION
1.	2	Submersible pump and motor - "Wemco" Model 352 Torque Flow, non-clog, 100% recess impeller, reliance double seal, oil buffer zone, 1725 r.p.m., 3 h.p. motor with warning device or equal.
2.	2	3" Mercor Ampax WS acid resistant 4-ply flexible hose (100 psi) with male stainless steel bonded connections (installed laid).
3.	2	4" x 3" long radius cast iron flanged elbow with 1/2" galv. nipple and elbow as per detail on sheet.
4.	5	4" flanged cast iron pipe, flg x P. E.
5.	2	4" dresser couplings Style 38
6.	2	4" lever and spring check valve full opening bronze mounted.
7.	2	4" Homestead ballcentric plug valve, Fig 1522
8.	2	4" flanged 45° cast iron bend.
9.	1	4" flanged cast iron true wye
10.	2	Power supply assembly furnished with pump, 30' cable, 3 # (4 - # 14 for power leads) 4# 18 for 2 protector wires and 2 warning wires - see spec's
11.	2	Alternating relay, 120 v., 1 PDT
12.	2	Combination circuit breaker, size 1 starter with 3 quick-trip overloads, 120 v., coil and external reset button.
13.	2	Electrode-type relays, 120 v., primary coil and one contact Warwick "T" B/W or approved equal.
14.	2	Compressor, diaphragm-type, 120 v., 10 watt, Esaco
15.	9	Cast in M.H. steps per L.A. County Engineer Std. 8-17
16.	4	Pressure switch - range and differential adjustable pressure switches
17.	1	3/8" F.V.C. air line or stainless steel brackets and nylon harness ties
18.	1	Heavy duty junction box 8" x 7" x 4" deep (nominal inside diameter) Crowder-Hinds type TDF GUWH, or approved equal
19.	2	Stainless steel cable Hockensack 1/4" x 5/16" nylon covered 6308 tenelle strength with 1/2" x 6" cadmium plated eye bolt and stainless steel hook.
20.	1	48" I.D. precast manhole with flat top and eccentric 24" opening, Associated Concrete Products, Inc., Drawing No. FT-105, or equal, with steps.
21.	1	Locking manhole frame and cover per L.A. County Engineer Std. 8-35 placed on 8" top ring.
22.	1	4'0" x 4'0" x 3" deep (interior dimensional) "BROOKS" utility box, Model W-304 with traffic cover, Model 300, 20, or approved equal
23.	1	Roto-Phase Model DBA 230 v., rotary phase generator capable of converting 1 # power to 3 # power automatically in less than 6 seconds before pump loader is energized
24.	4	Metal conduits
25.	1	Safety disconnect switch - 2 pole nonfusable, in Nema 3A enclosure
26.	1	1/2" # 8d. galv. iron pipe
27.	1	"Ball & Gossett" single-stage air compressor Model 8YC3-1, 3/4 h.p., 230 v., 60 cycle, 1 # with centrifugal unloader and check valve, No. 8YC3-158 rated to supply 4.5 C.F.M. free air against 20 p.s.i.g.
28.	1	1/2" # galv. gate valve 150# WWD
29.	1	1/2" # galv. iron check valve # WWD
30.	1	1/2" # galv. iron union 150# WWD
31.	6	4" # steel pipe filled with concrete
32.	1	4" x 4" x 4" flanged cast iron tee with blind flange.
35.	2	4" cast iron pipe, flanged at both ends.

PRIVATE CONTRACT N° 8885
 SEWAGE LIFT STATION
 PARCEL MAP N° 2805