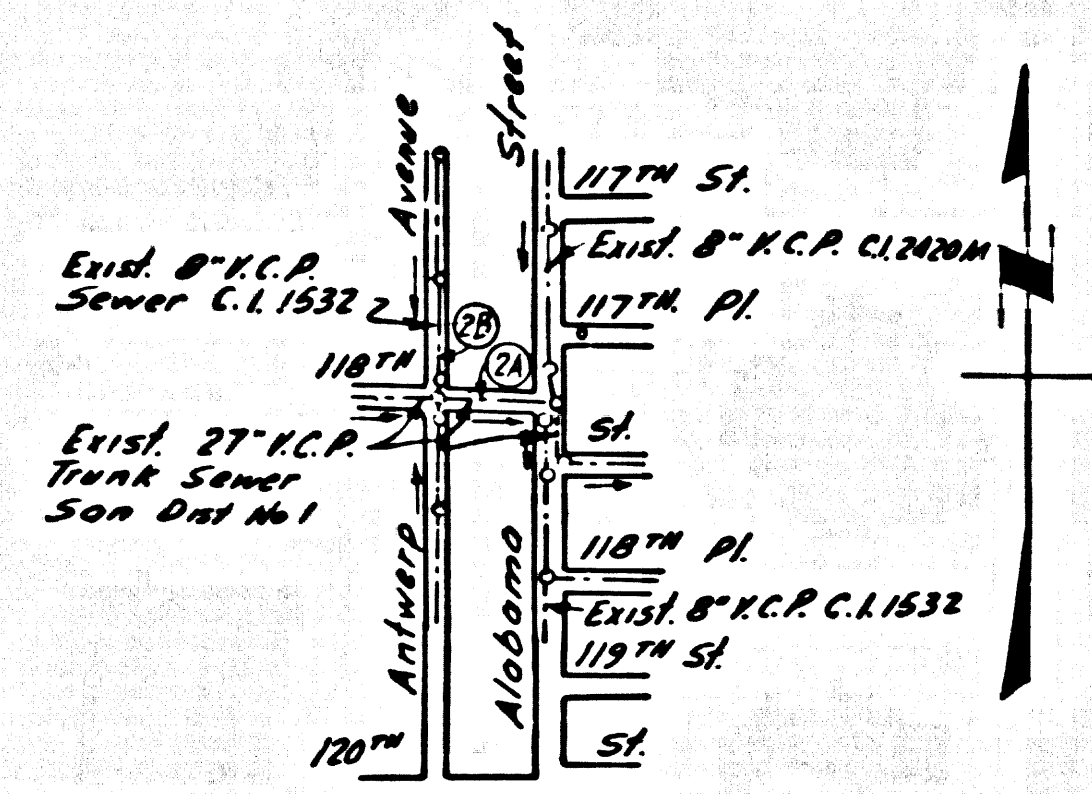


B.M. No. 5 ELEV. 92.279
 Rd. Dept. F.B. 3532 p. 494
 Alabama St. & 118th St. 84 Sok in
 Conc. Dr. Strip 20' x 5' x 20' 6" x 1/4" Int.
 QUAD. 19

PRIVATE ENGINEERS NOTICE TO CONTRACTORS
 The existence and location of any underground utility or structure shown on these plans are obtained by a search of the available records. To the best of our knowledge there are no existing utilities except as shown on this map. The contractor is required to take due precautionary measures to protect the utility lines shown and any other lines not of record or not shown on this map.

E.L. Boken Jr.
 E.L. Boken Jr. R.C.E. 10533



Note: Number in circle indicates page number

INDEX MAP
 P.C. 8399
 TRACT NO. 30934
 Scale: 1"=500'

FIRESTONE BLDG. DIST. NO. 1

- HOUSE LATERALS TO BE CONSTRUCTED WITH INVERTS AT PROPERTY LINE 4 FEET BELOW CURB GRADE EXCEPT AS NOTED.
- PROVIDE STAKES ON THE PROPERTY LINE OR PROPERTY LINES PRODUCED AT RIGHT ANGLES TO THE SEWER LINE AT THE CENTER LINE OF EACH MANHOLE.
- NO REPRESENTATIVE OF THE COUNTY ENGINEER WILL SURVEY OR LAY OUT ANY PORTION OF THE WORK.
- THE PRIVATE ENGINEER SHALL FURNISH THE COUNTY ENGINEER WITH GRADE SHEETS AND STATIONING FOR ALL HOUSE LATERALS AND "T" OR "T" BRANCHES AND SHALL PROVIDE STAKES FOR THEM AT THEIR PROPER LOCATIONS WITH STATIONING PLAINLY MARKED. ALL HOUSE LATERALS SHALL BE CONSTRUCTED IN A STRAIGHT ALIGNMENT AT RIGHT ANGLES FROM THE MAIN LINE SEWER EXCEPT AS SHOWN ON THE PLANS. HOUSE LATERALS FROM CHIMNEYS SHALL NOT HAVE AN ANGLE OF LESS THAN 45° WITH THE MAIN LINE SEWER. ANY CHANGE IN ALIGNMENT SHALL BE REQUESTED BY WRITING BY THE PRIVATE ENGINEER.
- THE PRIVATE ENGINEER SHALL FURNISH THE HOUSE LATERAL DEPTH AT THE PROPERTY LINE BELOW THE TOP OF CURB ELEVATION FOR EACH HOUSE LATERAL ON THE GRADE SHEET.
- NO REVISIONS SHALL BE MADE IN THESE PLANS WITHOUT THE APPROVAL OF THE COUNTY ENGINEER.
- THE CONTRACTOR SHALL NOTIFY THE CONSTRUCTION DIVISION BY TELEPHONE, MAIL, OR BY HAND, AT LEAST TWENTY-FOUR HOURS BEFORE STARTING ANY WORK UNDER THIS CONTRACT.
- ALL STRUCTURES SHALL BE EITHER BRICK MANHOLES PER S-3 OR PRECAST CONCRETE MANHOLES PER S-3 OR S-4, EXCEPT AS NOTED.
- "T" OR "T" BRANCHES MAY BE USED FOR CONNECTIONS TO MAINLINE SEWERS EXCEPT AS NOTED.
- MANHOLE TOPS ON UNIMPROVED RIGHTS OF WAY TO BE 8 1/2 INCHES ABOVE FINISHED GRADE.
- USE EXTRA STRENGTH PIPE ALL PIPE IS STANDARD UNLESS SPECIFIED AS NOTED.
- VERTICAL CLAY PIPE JOINTS SHALL BE TYPE "T", "F", OR "O" PER STANDARD SPECIFICATIONS SECTION 308.2.
- IF A POWER POLE IS WITHIN THREE FEET OF THE SEWER, THE SEWER SHALL BE ENCASED, PER S-23, TWO FEET ON EACH SIDE FROM THE POINT OF INTERFERENCE.
- IF DURING THE COURSE OF CONSTRUCTION IT IS DETERMINED THAT THERE IS LESS THAN FOUR FEET OF COVER OVER THE TOP OF A MAIN LINE OR HOUSE LATERAL "C.P." SEWER WHICH IS NOT INDICATED ON THE PLANS, THE PIPE SHALL BE ENCASED PER S-23, UNLESS OTHERWISE APPROVED BY THE COUNTY ENGINEER.
- RESURFACE ALL TRENCHES WITHIN PAVED AREAS TO MEET L.A. COUNTY ROAD DEPT. OR CALIFORNIA STATE HIGHWAY REQUIREMENTS IN ACCORDANCE WITH PERMITS.
- SEWERS TO BE TESTED FOR LEAKAGE PER SECTION 308.2.3 OF THE STANDARD SPECIFICATIONS.
- REFER TO SECTION 7.0.1.1 OF THE STANDARD SPECIFICATIONS, REGARDING SLEAVE CODES.
- ALL JOINTS BETWEEN CAST IRON PIPE AND VITRIFIED CLAY PIPE SHALL BE MADE WITH A RUBBER ELBOW JOINT, TYPE "C" OR "W", (WITH BUSHING IF NECESSARY) PER STANDARD SPECIFICATIONS, SECTION 308.2.

THE FOLLOWING LATEST REVISED STANDARD PLANS ON FILE IN THE OFFICE OF THE COUNTY ENGINEER SHALL APPLY IN THE CONSTRUCTION OF THIS PROJECT.

LEGEND S-1
MINIMUM PUBLIC SAFETY REQUIREMENTS S-2
BRICK MANHOLE S-3
NON-REINFORCED PRECAST CONCRETE MANHOLE S-4
REINFORCED PRECAST CONCRETE MANHOLE S-5
MANHOLE FRAME AND COVER S-6
STANDARD MANHOLE STEP S-7
SEWING FOR SEWER PIPE S-8
CRADING AND ENCASEMENT S-9
PIPE ON THE SUPPORT S-10
ALTERNATE TRENCH WIDTHS S-11

PROFILE, ALIGNMENT AND GRADE OF
SANITARY SEWERS P.C. 8399
 TO BE CONSTRUCTED IN PAGE 1

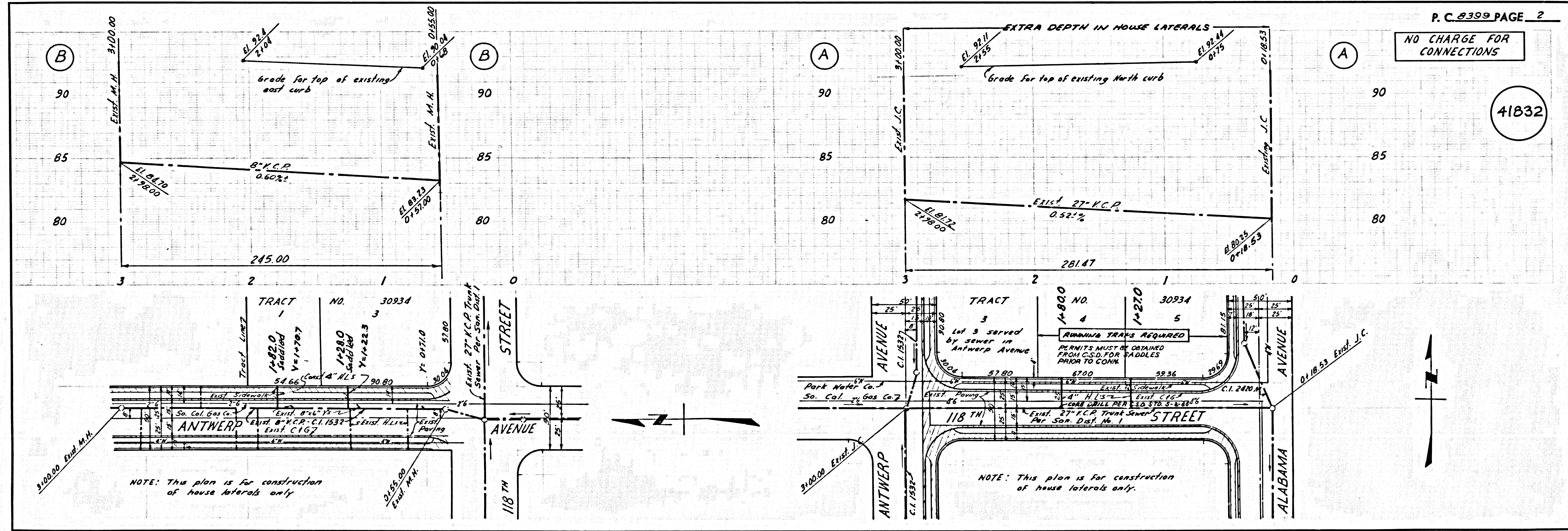
TRACT NO. 30934
 PRIVATE CONTRACT NO. 8399

W.S. 26
 SHEET : 2 PAGES
 SCALE: HORIZ. 1"=40' VERT. 1"=4'
 DECEMBER, 1969
 PREPARED IN THE OFFICES OF
ANDEL ENGINEERING COMPANY
E.L. Boken Jr.
 REG. C. E. NO. 10533

NOTE:
 GRADES TO WHICH THE IMPROVEMENT IS TO BE CONSTRUCTED ARE SHOWN ON PLANS AND PROFILE. GRADE POINTS FOR TOP OF CURBS, CENTER LINE OF STREETS OR CENTER LINE OF ALLEYS ARE SHOWN BY CIRCLES ON PROFILES. AT ALL POINTS BETWEEN DESIGNATED POINTS THE GRADE SHALL BE ESTABLISHED SO AS TO CONFORM TO A STRAIGHT LINE DRAWN BETWEEN SAID DESIGNATED POINTS. ELEVATIONS ARE IN FEET ABOVE U.S.C. & G.S. SEA LEVEL DATUM OF 1929.
 WORK SHALL BE CONSTRUCTED ACCORDING TO THE STANDARD SPECIFICATIONS FOR PUBLIC WORKS CONSTRUCTION AND SPECIAL PROVISIONS FOR THE CONSTRUCTION OF SANITARY SEWERS DATED JAN. 9, 1948 AS REVISED, AND SHALL BE PROSECUTED ONLY IN THE PRESENCE OF THE COUNTY ENGINEER.
 BEFORE WORK CAN BE STARTED, THE CONTRACTOR MUST OBTAIN A PERMIT TO EXCAVATE IN COUNTY STREETS FROM THE L. A. COUNTY ROAD DEPT., DISTRICT OFFICE NO. 1, AND PAY A FEE TO THE COUNTY ENGINEER, ROOM 136, COUNTY ENGINEERING BUILDING, THE WEST SECOND STREET OFFICE BUILDING, 308 WEST SECOND STREET, LOS ANGELES, CALIFORNIA.
 APPROVAL OF THIS PLAN BY THE COUNTY OF LOS ANGELES DOES NOT CONSTITUTE A REPRESENTATION AS TO THE ACCURACY OF THE LOCATION OR OF THE EXISTENCE OR NON-EXISTENCE OF ANY UNDERGROUND UTILITY PIPE, OR STRUCTURE WITHIN THE LIMITS OF THE PROJECT. THIS NOTE APPLIES TO ALL PAGES.
 IF WORK IS TO BE DONE IN A STATE HIGHWAY, A PERMIT MUST BE OBTAINED FROM THE STATE OF CALIFORNIA, DIVISION OF HIGHWAY, 120 SOUTH SPRING STREET, LOS ANGELES, CALIFORNIA.
COUNTY OF LOS ANGELES, CALIFORNIA
 JOHN A. LAMBIE, COUNTY ENGINEER J. D. PARKHURST, CHIEF ENGINEER
 APPROVED BY *Robert W. Miller* 2-2-70 APPROVED BY *J. D. Parkhurst*
 ASSISTANT COUNTY ENGINEER OFFICE ENGINEER
 CHECKED BY *Thomas J. V. Kelly* 1/20/70
 REG. C. E. NO. 10653

COLLECT CHARGES AS INDICATED

NOTE: Lot 2 served by house lateral on sewer on Alabama Ave C.I. 2420 M



P. C. 8399 PAGE 2

NO CHARGE FOR CONNECTIONS

41832