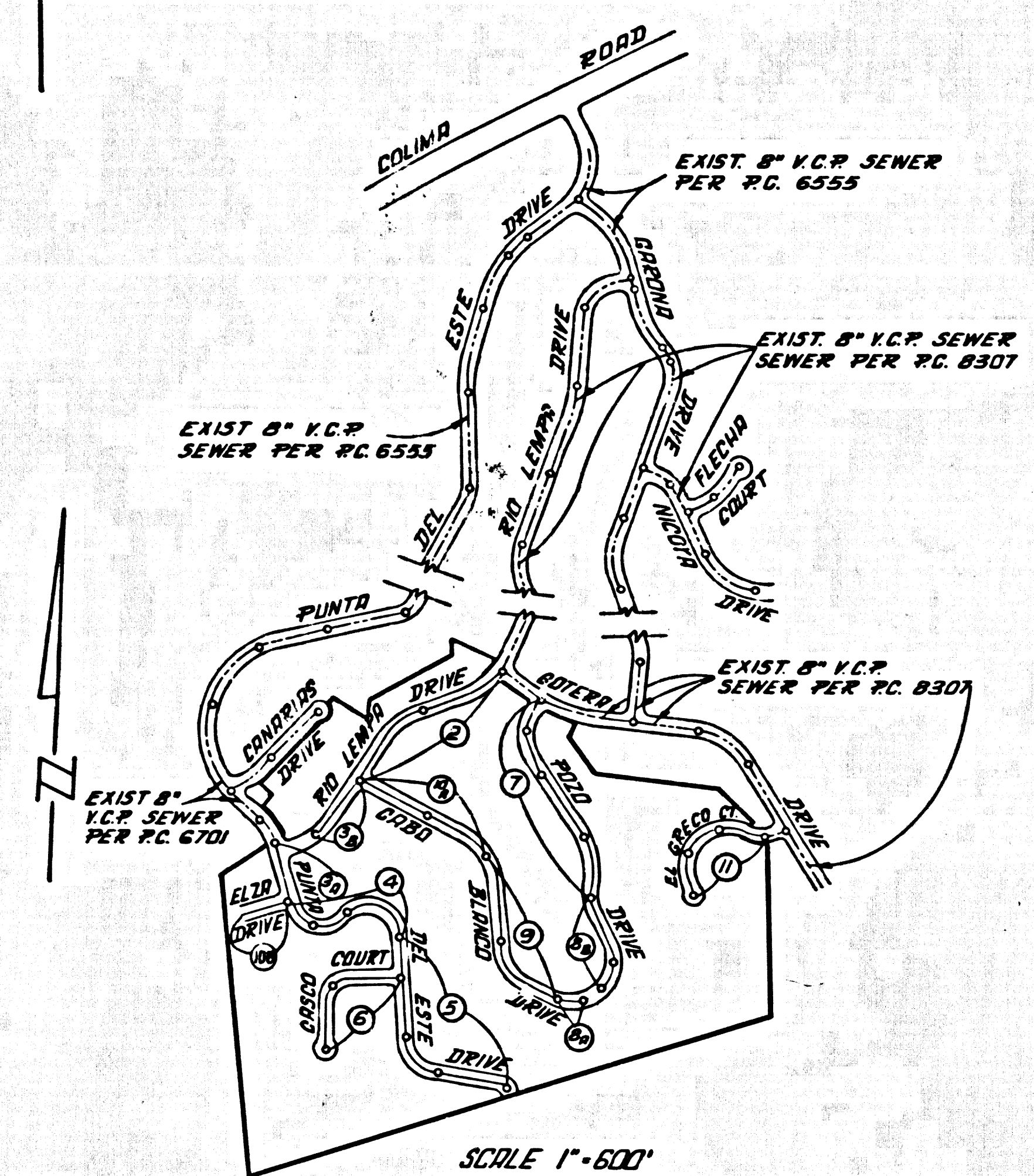


B.M. 883101 ELEV. 226.797
 P.D. 5.11 TAG W. G.S. 3 FT. N. B.C.R. AT
 N.W. COR. COLLINA RD. & PUNTA DEL ESTE
 DR. 75 FT. N. & 20 FT. W. APPROX. & INT.
 DITTERBEIN QUAD. 19.65



SCALE 1"=60'
 INDEX MAP
 TRACT No 30524
 P.C. 8401

ISSUE NO HOUSE CONNECTION PERMITS UNTIL P.C. 8307 HAS BEEN ACCEPTED

County Sanitation Districts shall be notified prior to the following as shown above on these drawings without written permission from the Chief Engineer and General Manager of the County Sanitation Districts.

SPECIAL NOTE:
 SOME OF THE LOTS MAY REQUIRE INDIVIDUAL BACK WATER VALVES EACH LOT SHOULD BE CHECKED PRIOR TO ISSUANCE OF HOUSE CONNECTION PERMITS.

COLLECT CHARGES AS INDICATED

**DOUBLE SCALE VERTICAL
 LA PUENTE BLDG. DIST. NO. 2**

- NOTES:
- HOUSE LATERALS TO BE CONSTRUCTED WITH INVERTS AT PROPERTY LINE 4 FEET 11/16" CURB GRADE EXCEPT AS NOTED.
 - PROVIDE STAKES ON THE PROPERTY LINE OR PROPERTY LINES PRODUCED AT RIGHT ANGLES TO THE SEWER LINE AT THE CENTER LINE OF EACH MANHOLE.
 - NO REPRESENTATIVE OF THE COUNTY ENGINEER WILL SURVEY OR LAY OUT ANY PORTION OF THE WORK.
 - THE PRIVATE ENGINEER SHALL FURNISH THE COUNTY ENGINEER WITH GRADE SHEETS AND STATIONING FOR ALL HOUSE LATERALS AND "T" OR "T" BRANCHES AND SHALL PROVIDE STAKES FOR THEM AT THEIR PROPER LOCATIONS WITH STATIONING PLAINLY MARKED. ALL HOUSE LATERALS SHALL BE CONSTRUCTED IN A STRAIGHT ALIGNMENT AT RIGHT ANGLES FROM THE MAIN LINE SEWER EXCEPT AS SHOWN ON THE PLANS. HOUSE LATERALS FROM CHIMNEYS SHALL NOT HAVE AN ANGLE OF LESS THAN 45° WITH THE MAIN LINE SEWER. ANY CHANGE IN ALIGNMENT SHALL BE REQUESTED IN WRITING BY THE PRIVATE ENGINEER.
 - THE PRIVATE ENGINEER SHALL FURNISH THE HOUSE LATERAL DEPTH AT THE PROPERTY LINE BELOW THE TOP OF CURB ELEVATION FOR EACH HOUSE LATERAL ON THE GRADE SHEET.
 - NO REVISIONS SHALL BE MADE IN THESE PLANS WITHOUT THE APPROVAL OF THE COUNTY ENGINEER.
 - THE CONTRACTOR SHALL NOTIFY THE CONSTRUCTION DIVISION BY TELEPHONE, MADISON 9-2747, EXT. 8159, AT LEAST TWENTY-FOUR HOURS BEFORE STARTING ANY WORK UNDER THIS CONTRACT.
 - ALL STRUCTURES SHALL BE CONSTRUCTED PER S-22, EXCEPT AS NOTED.
 - "T" OR "T" BRANCHES MAY BE USED FOR CONNECTIONS TO MAINLINE SEWERS EXCEPT AS NOTED.
 - MANHOLE TOPS IN UNIMPROVED RIGHTS OF WAY TO BE 31/2 INCHES ABOVE FINISHED GRADE.
 - USE EXTRA STRENGTH PIPE. ALL PIPE IS STANDARD DEPTH EXCEPT AS NOTED.
 - VITRIFIED CLAY PIPE JOINTS SHALL BE TYPE "D", "T", OR "G" PER STANDARD SPECIFICATIONS SECTION 304.2.
 - IF A POWER POLE IS WITHIN THREE FEET OF THE SEWER, THE SEWER SHALL BE ENCASED, PER S-23, TWO FEET ON EACH SIDE FROM THE POINT OF INTERFERENCE.
 - IF DURING THE COURSE OF CONSTRUCTION IT IS DETERMINED THAT THERE IS LESS THAN FOUR FEET OF COVER OVER THE TOP OF A MAIN LINE OR HOUSE LATERAL V.C.P. SEWER WHICH IS NOT INDICATED ON THE PLANS, THE PIPE SHALL BE ENCASED PER S-23, CASE II UNLESS OTHERWISE APPROVED BY THE COUNTY ENGINEER.
 - REINFORCE ALL TRENCHES WITHIN PAVED AREAS TO MEET L.A. COUNTY ROAD DEPT. OR CALIFORNIA STATE HIGHWAY REQUIREMENTS IN ACCORDANCE WITH PERMITS.
 - SEWERS TO BE TESTED FOR LEAKAGE PER SECTION 304.2.17 OF THE STANDARD SPECIFICATIONS.
 - REFER TO SECTION 7-18.41 OF THE STANDARD SPECIFICATIONS, REGARDING SAFETY ORDERS.
 - ALL JOINTS BETWEEN CAST IRON PIPE AND VITRIFIED CLAY PIPE SHALL BE MADE WITH A RUBBER SLURRY JOINT, TYPE "C" OR "B", TYPE FINISHING IF NECESSARY PER STANDARD SPECIFICATIONS, SECTION 304.2.
 - NO HOUSE LATERALS TO BE CONSTRUCTED UPSTREAM OF THIS STATION.**
 - THE FOLLOWING LATEST REVISED STANDARD PLANS ON FILE IN THE OFFICE OF THE COUNTY ENGINEER SHALL APPLY IN THE CONSTRUCTION OF THIS PROJECT:

LEGEND	S-1
MINIMUM PUBLIC SAFETY REQUIREMENTS	S-2
NON-REINFORCED PRECAST CONCRETE MANHOLE	S-3
MANHOLE FRAME AND COVER	S-4
STANDARD MANHOLE STEP	S-5
BEDDING FOR SEWER PIPE	S-6
CASTING AND ENCASEMENT	S-7
WYE OR TEE SUPPORT	S-8
ALLOWABLE TRENCH WIDTHS	S-9
SPECIFIC HOUSE LATERALS	S-10

PROFILE, ALIGNMENT AND GRADE OF
SANITARY SEWERS P.C. 8401
 CONSTRUCTED IN PAGE 1

TRACT No 30524

PRIVATE CONTRACT NO. 8401

W.S. 38 B-4

6 SHEETS; 11 PAGES
 SCALE: VERT. 1"=8'
 HORIZ. 1"=40' MAY, 1970

PREPARED IN THE OFFICES OF
LIND & HILLERUD INC.
 15729 TEXACO AVENUE - PARAMOUNT, CALIF. 90723

REG. C. E. No. 16362

NOTE:
 GRADES TO WHICH THIS IMPROVEMENT IS TO BE CONSTRUCTED ARE SHOWN ON PLANS AND PROFILES. GRADE POINTS FOR TOP OF CURBS, CENTER LINE OF STREETS, OR CENTER LINE OF ALLEYS ARE SHOWN BY CIRCLES ON PROFILES. AT ALL POINTS BETWEEN DESIGNATED POINTS THE GRADE SHALL BE ESTABLISHED SO AS TO CONFORM TO A STRAIGHT LINE DRAWN BETWEEN SAID DESIGNATED POINTS. ELEVATIONS ARE IN FEET ABOVE U.S.C. & G.S. SEA LEVEL DATUM OF 1929.
 BEFORE WORK CAN BE STARTED, THE CONTRACTOR MUST OBTAIN A PERMIT TO EXCAVATE IN COUNTY STREETS FROM THE L.A. COUNTY ROAD DEPT., DISTRICT OFFICE NO. 1, 11111 W. WEST SECOND STREET OR, 221, F. W. WHEELER AVENUE, SAN DIMAS, REGIONAL OFFICE, SUFFICIENT TO COVER THE COST OF CONSTRUCTION INSTRUCTION AND RECORD PLANS.
 APPROVAL OF THIS PLAN BY THE COUNTY OF LOS ANGELES DOES NOT CONSTITUTE A REPRESENTATION AS TO THE ACCURACY OF THE LOCATION OF OR THE EXISTENCE OR NON-EXISTENCE OF ANY UNDERGROUND UTILITY PIPE, OR STRUCTURE WITHIN THE LIMITS OF THIS PROJECT. THIS NOTE APPLIES TO ALL PAGES.
 IF WORK IS TO BE DONE IN A STATE HIGHWAY, A PERMIT MUST BE OBTAINED FROM THE STATE OF CALIFORNIA, DIVISION OF HIGHWAYS, 120 SOUTH SPRING STREET, LOS ANGELES, CALIFORNIA.

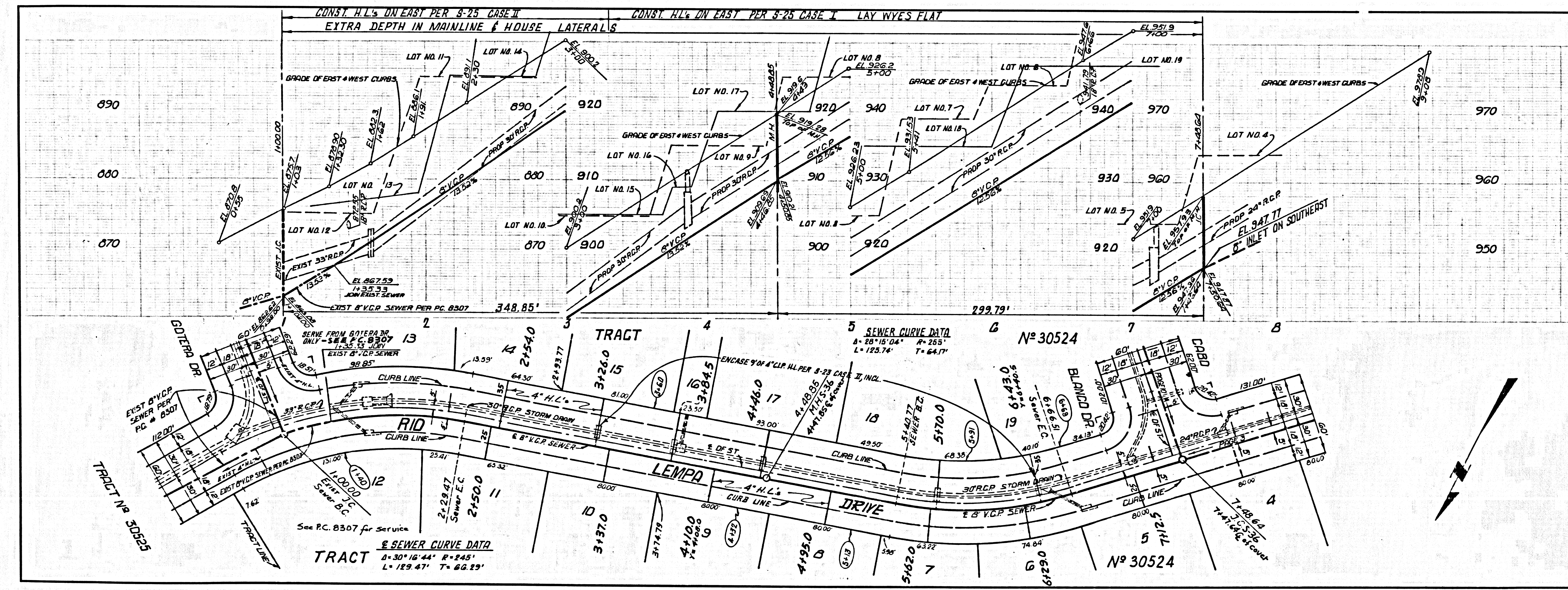
COUNTY OF LOS ANGELES, CALIFORNIA
 JOHN A. LAMBIE, COUNTY ENGINEER J. D. PARKHURST, CHIEF ENGINEER
 CO. DIST. NO. 21
 APPROVED BY *R.T. Worling* APPROVED BY *L. Westermann*
 REGIONAL ENGINEER OFFICE ENGINEER

CHECKED BY: *Ralph Schaefer* 6/23/70
 REG. C.E. No. 13406

LOT NO. 12 SERVED BY SEWER IN RIO LEMPA DRIVE P.C. 8307.
 LOT NO. 13 SERVED BY SEWER IN GOTERA DRIVE P.C. 8307.
 LOT NO. 132 SERVED BY SEWER IN PUNTA DEL ESTE DRIVE P.C. 6701.

LOTS 133 TO 138 SERVED BY SEWER IN CANARIAS DR. P.C. 6701

43122



P.C. 8401 PAGE 2

NO CHARGE FOR CONNECTIONS
 DOUBLE SCALE
 SEE SPECIAL NOTE PAGE 1.

43123

