

B.M. B.G. 2579 ELEV. 438.733  
 R.D. MON. IN WELL 8" DOWN @ INT.  
 HACIENDA BLVD TETLEY ST. MARKED  
 (RD. DEPT. 1962)  
 BASELINE QUAD. 1965

REVISION NO. 1 FEB. 26, 1970

1. PAGE 2 - ADD MANHOLE @ STA. 1+92.82 1/8" STUB TO WEST
2. PAGE 2 - DELETE MANHOLE @ STA. 2+82.73
3. PAGE 2 - ADD MANHOLE @ STA. 3+90.00 1/8" STUB TO WEST
4. PAGE 2 - DELETE MANHOLE @ STA. 4+52.73
5. PAGE 2 - ADD MANHOLE @ STA. 7+40.00 1/8" STUB TO WEST
6. PAGE 2 - ELIMINATION OF 6" LATERALS INTO LOT 2 AND 3.

Robert R. Flores  
 ROBERT R. FLORES R.C.E. 11349  
 APPROVED *Ralph Schaper* 3/3/70  
 OFFICE OF COUNTY ENGR. REG. C.E. NO. 13916

LA PUENTE BLDG. DIST. NO. 2

PROFILE ALIGNMENT AND GRADE OF  
 SANITARY SEWERS P.C. 8411  
 CONSTRUCTED TO SERVE PAGE 1

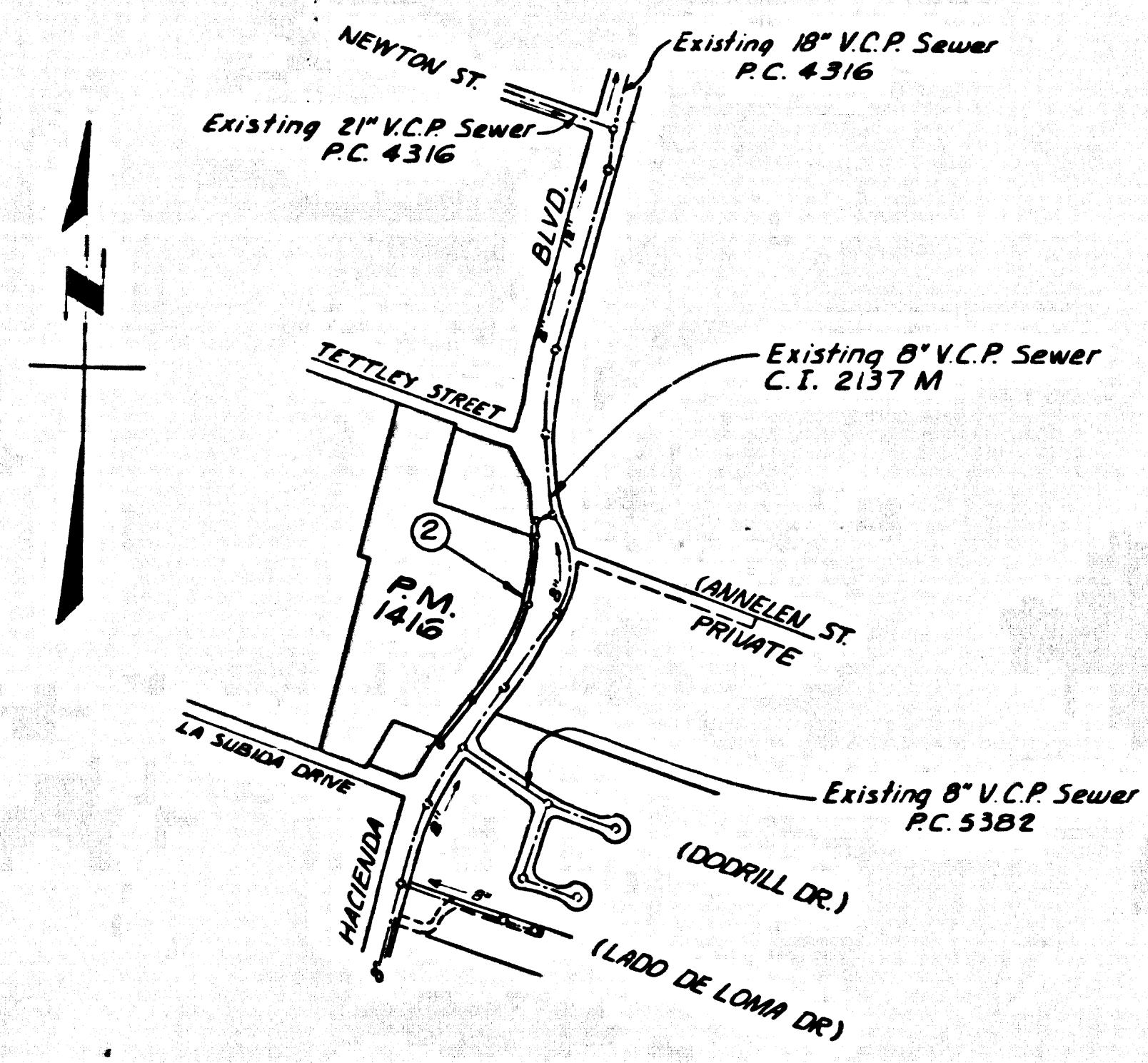
P.M. NO. 1416

PRIVATE CONTRACT NO. 8411

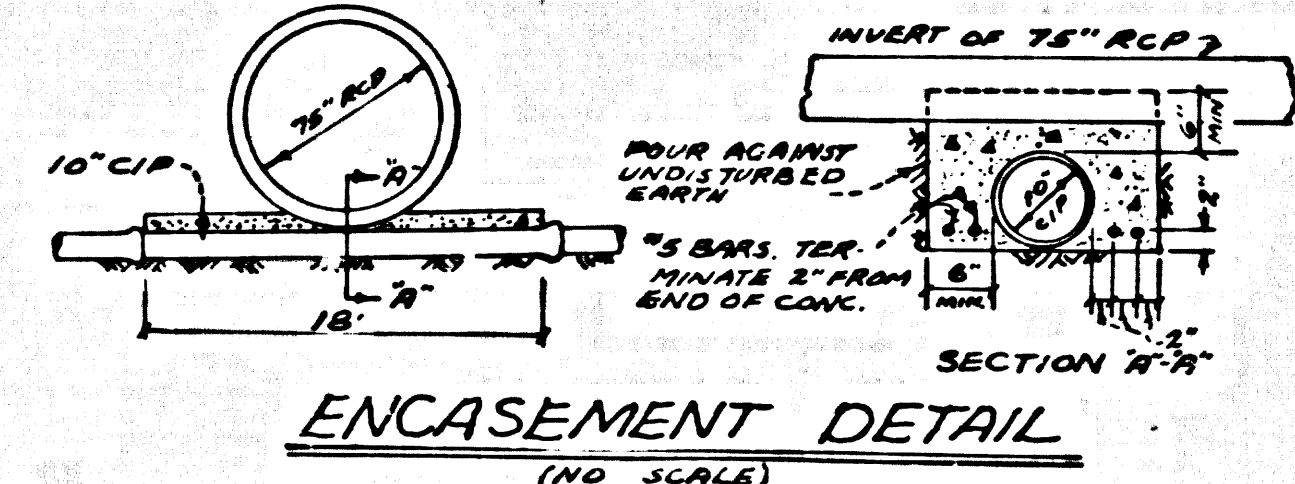
W.S. 38 A 3  
 1 SHEET OF 2 PAGES

SCALE: HORIZ. 1" = 40'  
 VERT. 1" = 4'  
 DEC., 1969  
 PREPARED IN THE OFFICES OF  
 KEMMERER ENGR. CO. INC.  
 6705 S. PAINTER AVE., WHITTIER, CALIF.  
 BY: *Robert R. Flores*  
 REG. C.E. NO. 11349

FOR LEGEND SEE PLAN NO. S-1



P.C. No. 8411  
 INDEX MAP  
 SCALE: 1" = 600'



THE FOLLOWING COUNTY ENGR. STANDARD PLANS APPLY TO THIS PROJECT:

LEGEND	S-1
MIN. PUBLIC SAFETY REQUIREMENTS	S-2
BRICK MANHOLE	S-3
NON REINFORCED PRECAST CONCRETE MANHOLE	S-4
REINFORCED PRECAST CONCRETE MANHOLE	S-5
MANHOLE FRAME AND COVER	S-6
MANHOLE STEP	S-15
BEDDING FOR SEWER PIPE	S-17
CRADLING AND ENCASEMENT	S-21
WYE OR TEE SUPPORT	S-23
ALLOWABLE TRENCH WIDTHS	S-26
	S-33

- NOTES:
1. PROVIDE STAKES ON THE PROPERTY LINE OR PROPERTY LINES PERPENDICULAR TO THE SEWER LINE AT THE CENTER LINE OF EACH MANHOLE.
  2. NO REPRESENTATIVE OF THE COUNTY ENGINEER WILL SURVEY OR LAY OUT ANY PORTION OF THE WORK.
  3. THE PRIVATE ENGINEER SHALL FURNISH THE COUNTY ENGINEER WITH GRADE SHEETS AND STATIONING FOR ALL HOUSE LATERALS AND "T" OR "Y" BRANCHES AND SHALL PROVIDE STAKES FOR THEM AT THESE PROPER LOCATIONS WITH STATIONING PLAINLY MARKED. ALL HOUSE LATERALS SHALL BE CONSTRUCTED IN A STRAIGHT ALIGNMENT AT RIGHT ANGLES FROM THE MAIN LINE SEWER EXCEPT AS SHOWN ON THE PLANS. HOUSE LATERALS FROM CHIMNEYS SHALL NOT HAVE AN ANGLE OF LESS THAN 45° WITH THE MAIN LINE SEWER. ANY CHANGE IN ALIGNMENT SHALL BE REQUESTED IN WRITING BY THE PRIVATE ENGINEER.
  4. THE PRIVATE ENGINEER SHALL FURNISH THE HOUSE LATERAL DEPTH AT THE PROPERTY LINE BELOW THE TOP OF CURB ELEVATION FOR EACH HOUSE LATERAL ON THE GRADE SHEET.
  5. NO REVISIONS SHALL BE MADE IN THESE PLANS WITHOUT THE APPROVAL OF THE COUNTY ENGINEER.
  6. THE CONTRACTOR SHALL NOTIFY THE CONSTRUCTION DIVISION BY TELEPHONE, MADISON 9-4747, EXT. 81551, AT LEAST TWENTY-FOUR HOURS BEFORE STARTING ANY WORK UNDER THIS CONTRACT.
  7. ALL STRUCTURES SHALL BE EITHER BRICK MANHOLES PER S-3 OR PRECAST CONCRETE MANHOLES PER S-4, EXCEPT AS NOTED.
  8. "T" OR "Y" BRANCHES MAY BE USED FOR CONNECTIONS TO MAIN LINE SEWERS EXCEPT AS NOTED.
  9. MANHOLE TOPS IN UNIMPROVED RIGHTS-OF-WAY TO BE SIX INCHES ABOVE FINISHED GRADE.
  10. USE EXTRA STRENGTH PIPE. ALL PIPE IS STANDARD DEPTH EXCEPT AS NOTED.
  11. VITRIFIED CLAY PIPE JOINT SHALL BE TYPE "D", "F" OR "B" PER STD. SPEC. SEC. 808-2.
  12. IF A POWER POLE IS WITHIN THREE FEET OF THE SEWER, THE SEWER SHALL BE ENCASED, PER S-23, TWO FEET ON EACH SIDE FROM THE POINT OF INTERFERENCE.
  13. IF DURING THE COURSE OF CONSTRUCTION IT IS DETERMINED THAT THERE IS LESS THAN FOUR FEET OF COVER OVER THE TOP OF A MAIN LINE OR HOUSE LATERAL V.C.P. SEWER WHICH IS NOT INDICATED ON THE PLANS, THE PIPE SHALL BE ENCASED PER S-23, UNLESS OTHERWISE APPROVED BY THE COUNTY ENGINEER.
  14. HOUSE LATERALS TO BE CONSTRUCTED WITH INVERTS AT PROPERTY LINE 6 FEET BELOW CURB GRADE EXCEPT AS NOTED.
  15. RESURFACE ALL TRENCHES WITHIN PAVED AREAS TO MEET L.A. COUNTY ROAD DEPT. OR CALIFORNIA STATE HIGHWAY REQUIREMENTS IN ACCORDANCE WITH PERMITS.
  16. SEWERS TO BE TESTED FOR LEAKAGE PER SECTION 306-2.17 UNIFORM STANDARD SPECIFICATIONS.
  17. REFER TO SECTION 7-10.4 OF THE STANDARD SPECIFICATIONS REGARDING SAFETY ORDERS.
  18. SPECIAL BACKFILL IN DESIGNATED AREAS:
    - (a) BACKFILL TRENCH AND BRACE OTHER EARTH REMOVED SO AS TO ACHIEVE THE NATURAL OR FINISHED GRADES AND SLOPES SHOWN ON THE GRADING PLAN APPROVED FOR THIS TRACT BY THE BUILDING AND SAFETY DIVISION.
    - (b) ALL BACKFILL AND BRACE MATERIALS SHALL BE COMPACTED TO A MINIMUM OF 90% OF MAXIMUM DENSITY PER A.S.T.M. STANDARD METHOD OF TEST D95 BY AS MODIFIED. ACCEPTABLE CERTIFICATION OF SUCH COMPACTION SHALL BE SUBMITTED TO THE CONSTRUCTION DIVISION.
  19. ALL JOINTS BETWEEN CAST IRON PIPE AND VITRIFIED CLAY PIPE SHALL BE MADE WITH A RUBBER SLEEVE JOINT, TYPE "C" OR "D" (WITH BUSHING IF NECESSARY) PER STANDARD SPECIFICATIONS, SECTION 808-2.

COLLECT CHARGES  
 AS INDICATED

GRADES TO WHICH THIS IMPROVEMENT IS TO BE CONSTRUCTED ARE SHOWN ON PLANS AND PROFILE. GRADE POINTS FOR TOP OF CURBS, CENTER LINE OF STREETS, OR CENTER LINE OF ALLEYS ARE SHOWN BY CIRCLES ON PROFILES. AT ALL POINTS BETWEEN DESIGNATED POINTS THE GRADE SHALL BE ESTABLISHED SO AS TO CONFORM TO A STRAIGHT LINE DRAWN BETWEEN SAID DESIGNATED POINTS. ELEVATIONS ARE IN FEET ABOVE U.S.C. & G.S. MEAN LEVEL DATUM OF 1929.

THIS DRAWING AND THE DATA HEREON ARE HEREBY MADE A PART OF THE SPECIFICATIONS. STANDARD SPECIFICATIONS FOR PUBLIC WORKS CONSTRUCTION AND SPECIAL PROVISIONS FOR THE CONSTRUCTION OF SANITARY SEWERS DIVISION 1-2.09.25 (REV. 11/5/62), AND SHALL BE PROSECUTED ONLY IN PRESENCE OF THE C.O. ENGR.

BEFORE WORK CAN BE STARTED, THE CONTRACTOR MUST OBTAIN A PERMIT TO EXCAVATE IN COUNTY STREETS FROM THE L.A. COUNTY ENG. DIV. DISTRICT OFFICE NO. 100 1ST FLOOR 400 N. MAIN ST. WHITTIER, CALIF. 90610.

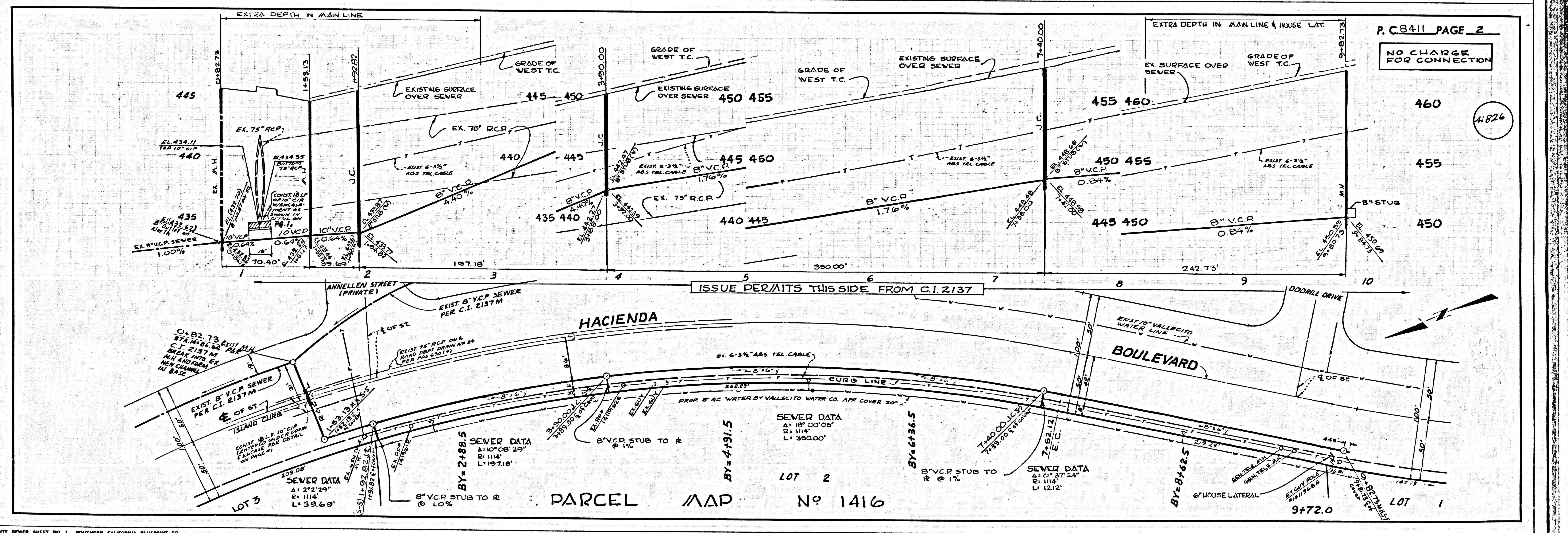
APPROVAL OF THIS PLAN BY THE COUNTY OF LOS ANGELES DOES NOT CONSTITUTE A REPRESENTATION AS TO THE ACCURACY OF THE LOCATION OR THE EXISTENCE OR NON-EXISTENCE OF ANY UNDERGROUND UTILITY PIPE, OR STRUCTURE WITHIN THE LIMITS OF THE PROJECT. THIS NOTE APPLIES TO ALL PAGES.

IF WORK IS TO BE DONE IN A STATE HIGHWAY, A PERMIT MUST BE OBTAINED FROM THE STATE OF CALIFORNIA, DIVISION OF HIGHWAYS, 120 SOUTH SPRING STREET, LOS ANGELES, CALIFORNIA.

COUNTY OF LOS ANGELES, CALIFORNIA  
 JOHN A. LAMBE, COUNTY ENGINEER  
 APPROVED BY: *B.T. Worley*  
 SAN DIEGO REGIONAL ENGINEER

J. D. PARKHURST, CHIEF ENGINEER  
 CO. 244 FIVE HUNDRED 21  
 APPROVED BY: *J. D. Parkhurst*  
 OFFICE ENGINEER

CHECKED BY: *Ralph Schaper* 1/14/70  
 REG. C.E. NO. 13916



P.C. 8411 PAGE 2  
 NO CHARGE FOR CONNECTION

41826