

B.M. 5L 1026 ELEV. 1508.150  
 U.S.G. + 6" BR. CAP W END N 110' W. SPK. CUN. NE 411.24 LOC. 300 FT.  
 NLY ALG. 112' TECH. DEPT. ABOVE OAK SPRINGS ON ED + 40 FT.  
 N OF CTR. TRACKS AND OVERPASS BEING 0.1 MI. ONLY ALG. OAK SPRINGS  
 ON ED FROM JCT WITH LOST ON ED WCD (J-48C) 1959  
 NEWHALL QUAD. 1958

REVISION No 1  
 Page 8 - REVISED GRADE  
 0131 to 2148 DUE TO  
 WATER LINE  
 APPROVED: *R. H. Lambie* R.E. 14330 9-23-71  
 OFFICE OF COUNTY ENGINEER

DOUBLE SCALE  
 NEWHALL BLDG. DIST. NO. 82

PROFILE ALIGNMENT AND GRADE OF  
 SANITARY SEWERS  
 CONSTRUCTED IN

P.C. 8412  
 PAGE 1

TRACT No 26021

PRIVATE CONTRACT NO. 8412

W.S. 79  
 5 SHEETS; 10 PAGES

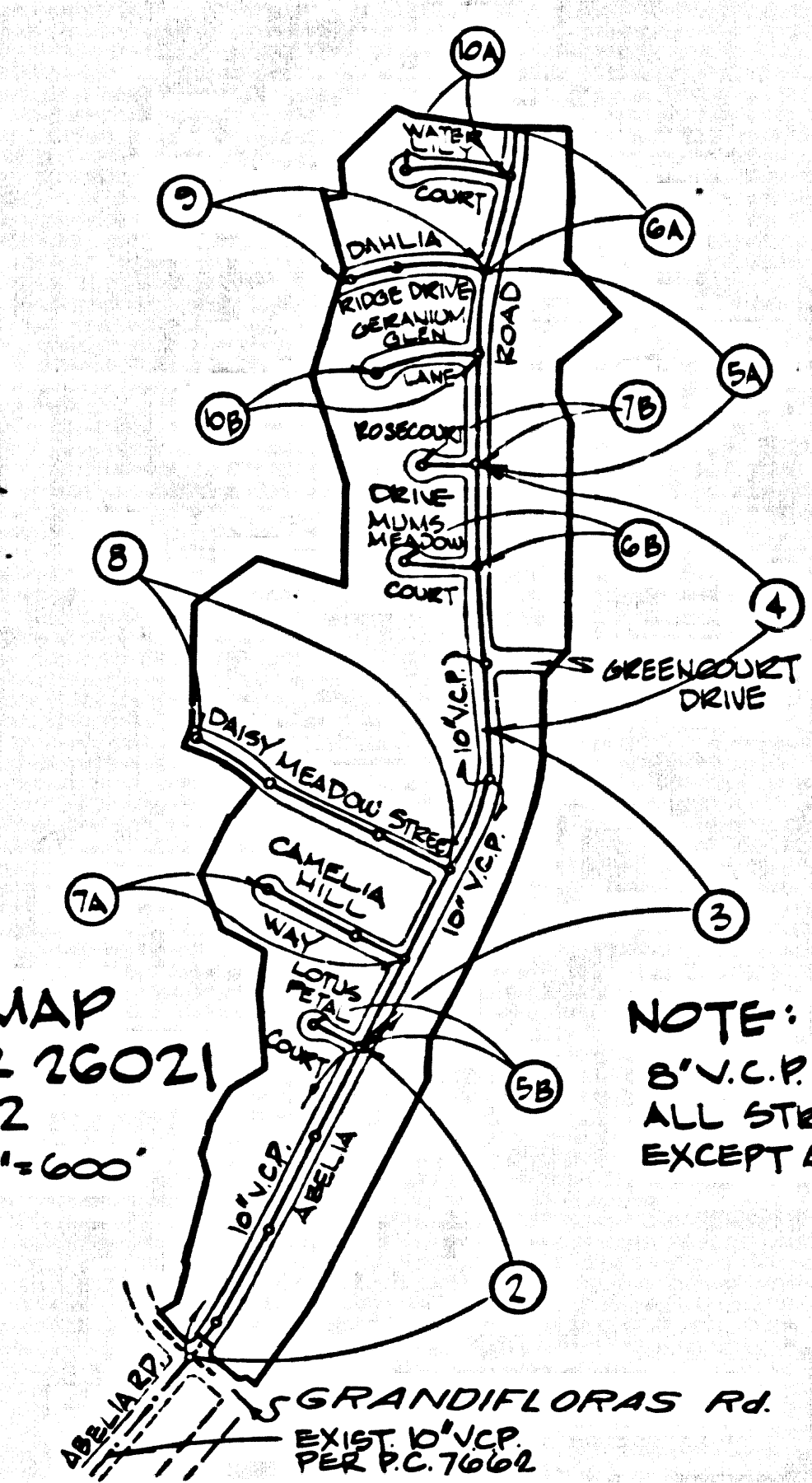
SCALE: VERT. 1" = 8'  
 HORIZ. 1" = 40'

JULY, 1970  
 PREPARED IN THE OFFICES OF  
 ENGINEERING SERVICE CORPORATION  
 1127 W. WASHINGTON BLVD. LOS ANGELES  
 BY: *J. R. Merrill*  
 REG. C. E. NO. 13092

42406

FOR LEGEND SEE PLAN NO. S-1

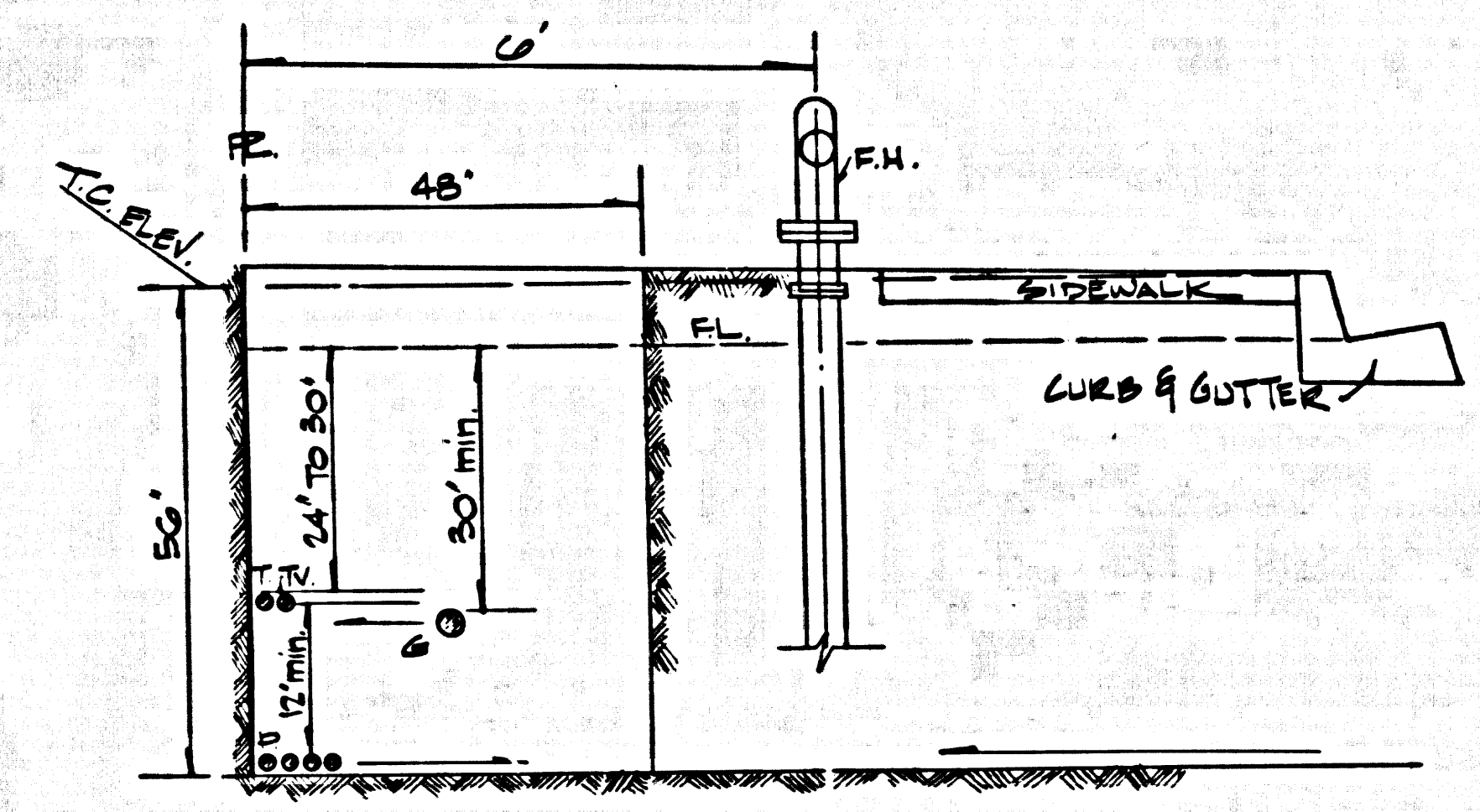
INDEX MAP  
 TRACT No 26021  
 P.C. 8412  
 SCALE 1" = 600'



NOTE:  
 NUMBERS IN CIRCLES INDICATE  
 PAGE NUMBERS

NOTE:  
 S.V.C.P. ON  
 ALL STREETS  
 EXCEPT AS SHOWN

GRADING TO BE DONE  
 PRIOR TO SEWER CONST.



COMMON UTILITY TRENCH

No connections for the disposal of  
 industrial wastes shall be made to  
 sewers shown on these drawings  
 without written permission from the  
 Chief Engineer and General Manager  
 of the County Sanitation Districts.

- NOTES:
- PROVIDE STAKES ON THE PROPERTY LINE OR PROPERTY LINES PRODUCED AT RIGHT ANGLES TO THE SEWER LINE AT THE CENTER LINE OF EACH MANHOLE.
  - NO REPRESENTATIVE OF THE COUNTY ENGINEER WILL SURVEY OR LAY OUT ANY PORTION OF THE WORK.
  - THE PRIVATE ENGINEER SHALL FURNISH THE COUNTY ENGINEER WITH GRADE SHEETS AND STATIONING FOR ALL HOUSE LATERALS AND "T" OR "Y" BRANCHES AND SHALL PROVIDE STAKES FOR THEM AT THEIR PROPER LOCATIONS WITH STATIONING PLAINLY MARKED. ALL HOUSE LATERALS SHALL BE CONSTRUCTED IN A STRAIGHT ALIGNMENT AT RIGHT ANGLES FROM THE MAIN LINE SEWER EXCEPT AS SHOWN ON THE PLANS. HOUSE LATERALS FROM CHIMNEYS SHALL NOT HAVE AN ANGLE OF LESS THAN 45° WITH THE MAIN LINE SEWER. ANY CHANGE IN ALIGNMENT SHALL BE REQUESTED IN WRITING BY THE PRIVATE ENGINEER.
  - THE PRIVATE ENGINEER SHALL FURNISH THE HOUSE LATERAL DEPTH AT THE PROPERTY LINE BELOW THE TOP OF CURB ELEVATION FOR EACH HOUSE LATERAL ON THE GRADE SHEET.
  - NO REVISIONS SHALL BE MADE IN THESE PLANS WITHOUT THE APPROVAL OF THE COUNTY ENGINEER.
  - THE CONTRACTOR SHALL NOTIFY THE CONSTRUCTION DIVISION BY TELEPHONE, MADISON 9-4727, EXT. 81351, AT LEAST TWENTY-FOUR HOURS BEFORE STARTING ANY WORK UNDER THIS CONTRACT.
  - ALL STRUCTURES SHALL BE EITHER BRICK MANHOLES PER S-3 OR PRECAST CONCRETE MANHOLES PER S-3B, EXCEPT AS NOTED.
  - Y BRANCHES MAY BE USED INSTEAD OF Y BRANCHES IN ALL LOCATIONS EXCEPT AS NOTED.
  - MANHOLE TOPS IN UNIMPROVED RIGHTS-OF-WAY TO BE SIX INCHES ABOVE FINISHED GRADE.
  - USE EXTRA STRENGTH PIPE. ALL PIPE IS STANDARD DEPTH EXCEPT AS NOTED.
  - WITHEDED CLAY PIPE JOINTS SHALL BE "D" FIT OR "B" FIT PER STD. SPEC. 208-2.
  - IF A POWER POLE IS WITHIN THREE FEET OF THE SEWER, THE SEWER SHALL BE ENCASED, PER S-32, TWO FEET ON EACH SIDE FROM THE POINT OF INTERFERENCE.
  - IF DURING THE COURSE OF CONSTRUCTION IT IS DETERMINED THAT THERE IS LESS THAN FOUR FEET OF COVER OVER THE TOP OF A MAIN LINE OR HOUSE LATERAL V.C.P. SEWER WHICH IS NOT INDICATED ON THE PLANS, THE PIPE SHALL BE ENCASED PER S-32, UNLESS OTHERWISE APPROVED BY THE COUNTY ENGINEER.
  - HOUSE LATERALS TO BE CONSTRUCTED WITH INVERTS AT PROPERTY LINE 6 FEET BELOW CURB GRADE EXCEPT AS NOTED.
  - RESURFACE ALL TRENCHES WITHIN PAVED AREAS TO MEET L.A. COUNTY ROAD DEPT. REQUIREMENTS.
  - SEWERS TO BE TESTED FOR LEAKAGE PER SECTION 306.3.2.7 UNIFORM STANDARD SPECIFICATIONS.
  - REFER TO SECTION 7-10-6.1 OF THE STANDARD SPECIFICATIONS, REGARDING SAFETY ORDERS.
  - SPECIAL BACKFILL IN DESIGNATED AREAS:  
 (a) BACKFILL TRENCH AND REFACE OTHER EARTH EXCEPTED SO AS TO ACHIEVE THE NATURAL OR FINISHED GRADES AND SLOPES SHOWN ON THE GRADING PLAN APPROVED FOR THIS TRACT BY THE ENGINEER AND SAFETY DIVISION.  
 (b) ALL BACKFILL AND EARTH REPLACES SHALL BE COMPACTED TO A MINIMUM OF 90% OF MAXIMUM DENSITY PER A.S.T.M. STAND. AND METHOD OF TEST DESCRIBED IN STANDARD SPECIFICATIONS SECTION 306.2.  
 (c) ACCEPTABLE CERTIFICATION OF SUCH COMPACTION SHALL BE SUBMITTED TO THE CONSTRUCTION DIVISION.  
 (d) LAYON PIPE AND V.C.P. SHALL BE MADE WITH RUBBER SLEEVE JOINT, TYPE "C" OR "D" (WITH BUSHING IF NECESSARY) PER STANDARD SPECIFICATIONS SECTION 306.2.  
 (e) THE FOLLOWING COUNTY ENGINEER STD. PLANS APPLY TO THIS PROJECT:

LEGEND	SECTION
MINIMUM PUBLIC SAFETY REQUIREMENTS	S-1
BRICK MANHOLES	S-3
ENHANCED PRECAST CONCRETE MANHOLE	S-3B
MANHOLE FRAMES AND COVER	S-4
MANHOLE GATES	S-5
12" V.C.P. SEWER PIPE	S-6
CRADLING AND ENCASUREMENT	S-7
WIDENING STREET WIDTHS	S-8
SPECIAL HOUSE LATERALS	S-9
SPECIAL SUPPORT AND PROTECTION	S-10

County Sanitation Districts shall be notified prior to the following on this project:  
 (a) Phone 231-1025 or 536-5097  
 (b) Acceptance of the project.

COLLECT CHARGES  
 AS INDICATED

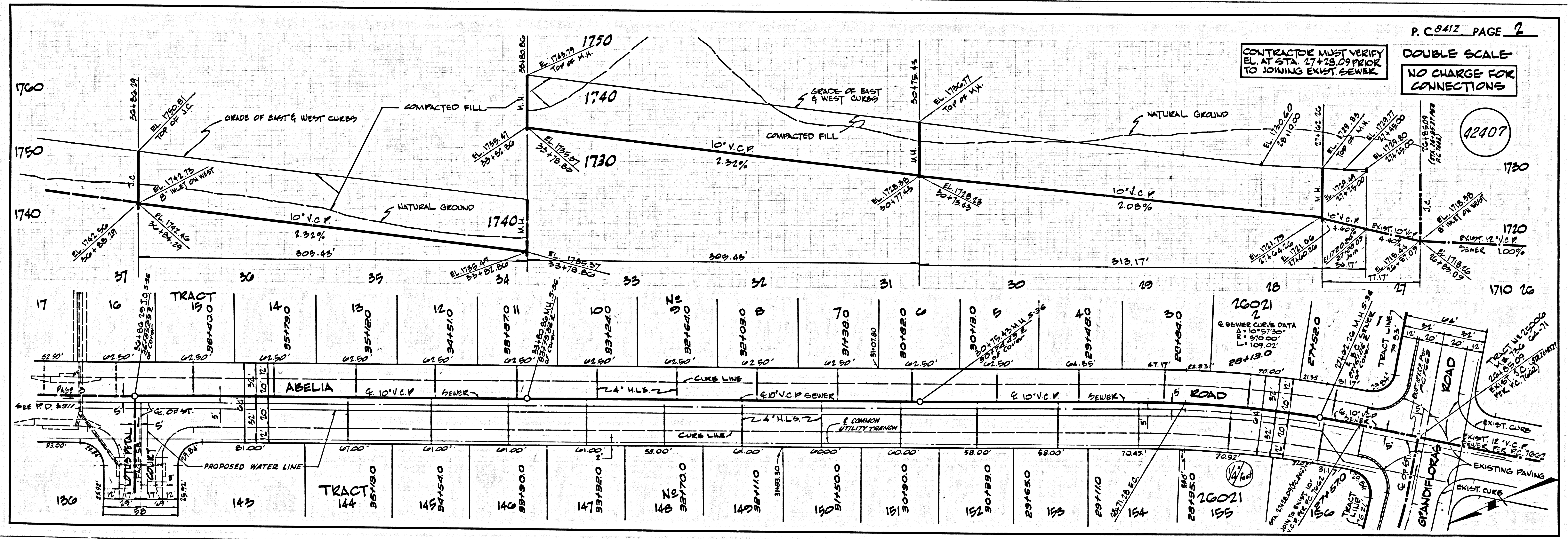
NOTE:  
 GRADES TO WHICH THIS IMPROVEMENT IS TO BE CONSTRUCTED ARE SHOWN ON PLANS AND PROFILES. GRADE POINTS FOR TOP OF CURBS, CENTER LINE OF STREETS, OR CENTER LINE OF ALLEYS ARE SHOWN BY CIRCLES ON PROFILES. AT ALL POINTS BETWEEN DESIGNATED POINTS THE GRADE SHALL BE ESTABLISHED SO AS TO CONFORM TO A STRAIGHT LINE DRAWN BETWEEN SAID DESIGNATED POINTS. ELEVATIONS ARE IN FEET ABOVE U.S.C. & G.S. SEA LEVEL DATUM OF 1929.  
 WORK SHALL BE CONSTRUCTED ACCORDING TO THE STANDARD SPECIFICATIONS FOR PUBLIC WORKS CONSTRUCTION (1970 EDITION) AND COUNTY ENGINEER SPECIAL PROVISIONS FOR CONSTRUCTION OF SANITARY SEWERS DATED APRIL 1970. THIS SHALL BE PRECEDED BY THE PRESENCE OF THE COUNTY ENGINEER.  
 BEFORE WORK CAN BE STARTED, THE CONTRACTOR MUST OBTAIN A PERMIT TO EXCAVATE IN COUNTY STREETS FROM THE L.A. COUNTY ROAD DEPT., DISTRICT OFFICE NO. 8. A FEE TO THE COUNTY ENGINEER, ROOM 330, COUNTY ENGINEERING BLDG., 100 WEST SECOND STREET, LOS ANGELES, CALIFORNIA, SHALL BE PAID TO COVER THE COST OF APPROVAL OF THIS PLAN BY THE COUNTY OF LOS ANGELES DOES NOT CONSTITUTE A REPRESENTATION AS TO THE ACCURACY OF THE LOCATION OF OR THE EXISTENCE OR NON-EXISTENCE OF ANY UNDERGROUND UTILITY PIPE, OR STRUCTURE WITHIN THE LIMITS OF THIS PROJECT. THIS NOTE APPLIES TO ALL PAGES.  
 IF WORK IS TO BE DONE IN A STATE HIGHWAY, A PERMIT MUST BE OBTAINED FROM THE STATE OF CALIFORNIA, DIVISION OF HIGHWAYS, 120 SOUTH SPRING STREET, LOS ANGELES, CALIFORNIA.

COUNTY OF LOS ANGELES, CALIFORNIA  
 JOHN A. LAMBIE, COUNTY ENGINEER  
 APPROVED BY: *J. R. Merrill* REGIONAL ENGINEER  
 J. D. PARKHURST, CHIEF ENGINEER  
 CO. SAN. DIST. NO. 26  
 APPROVED BY: *J. D. Parkhurst* CHIEF ENGINEER

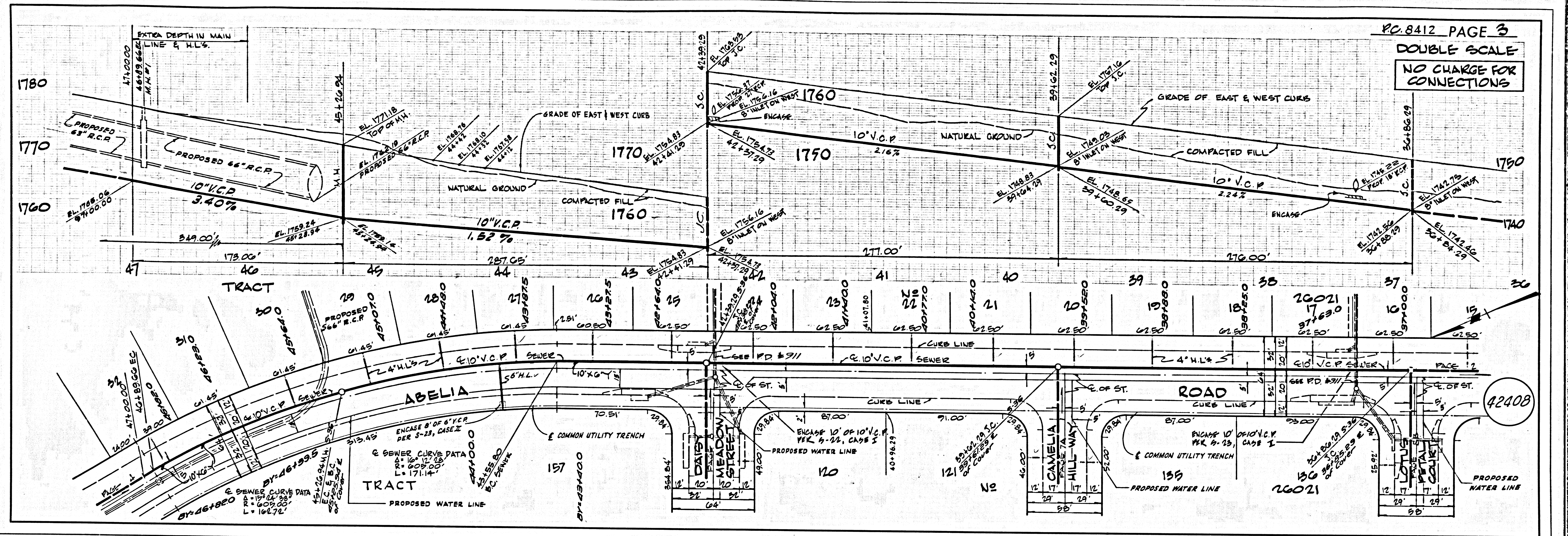
CHECKED BY: *Samuel J. ...* 9-31-70  
 REG. C.E. NO. 14392

THIS PLAN WAS SUBMITTED TO THE NEWHALL COUNTY WATER DISTRICT ON 9-1-70 FOR THEIR REVIEW & COMMENTS - IT WAS RETURNED WITHOUT COMMENT.

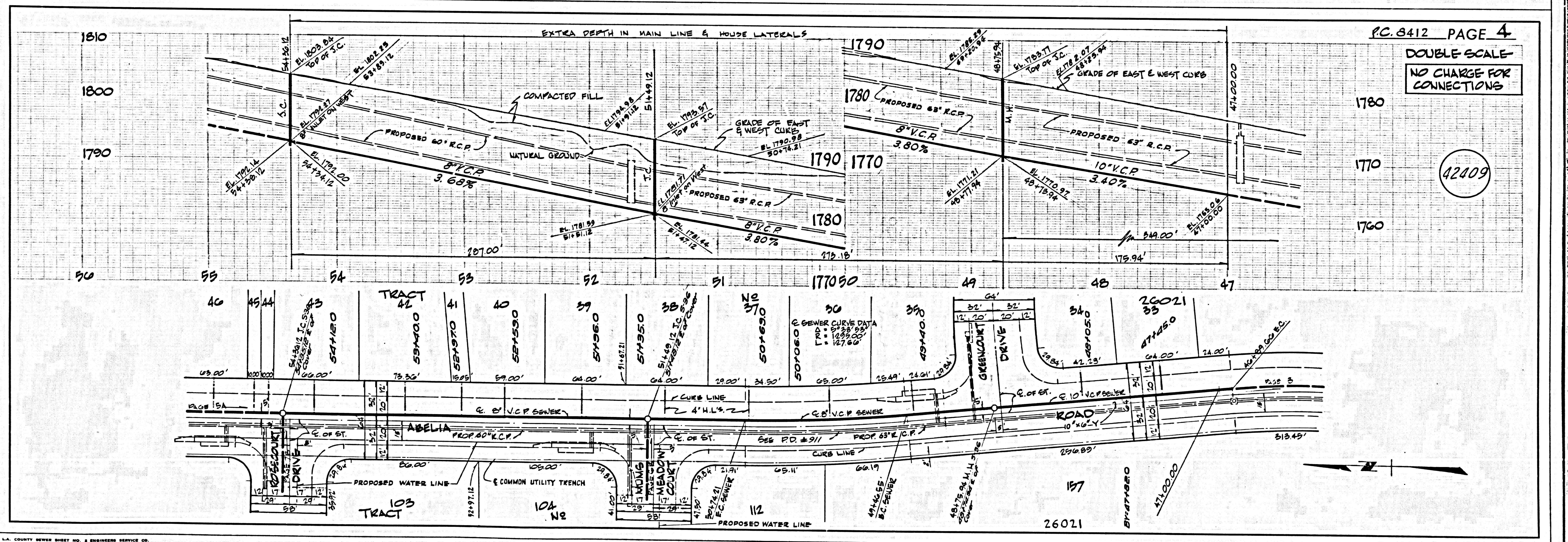
J.N. 0250.02





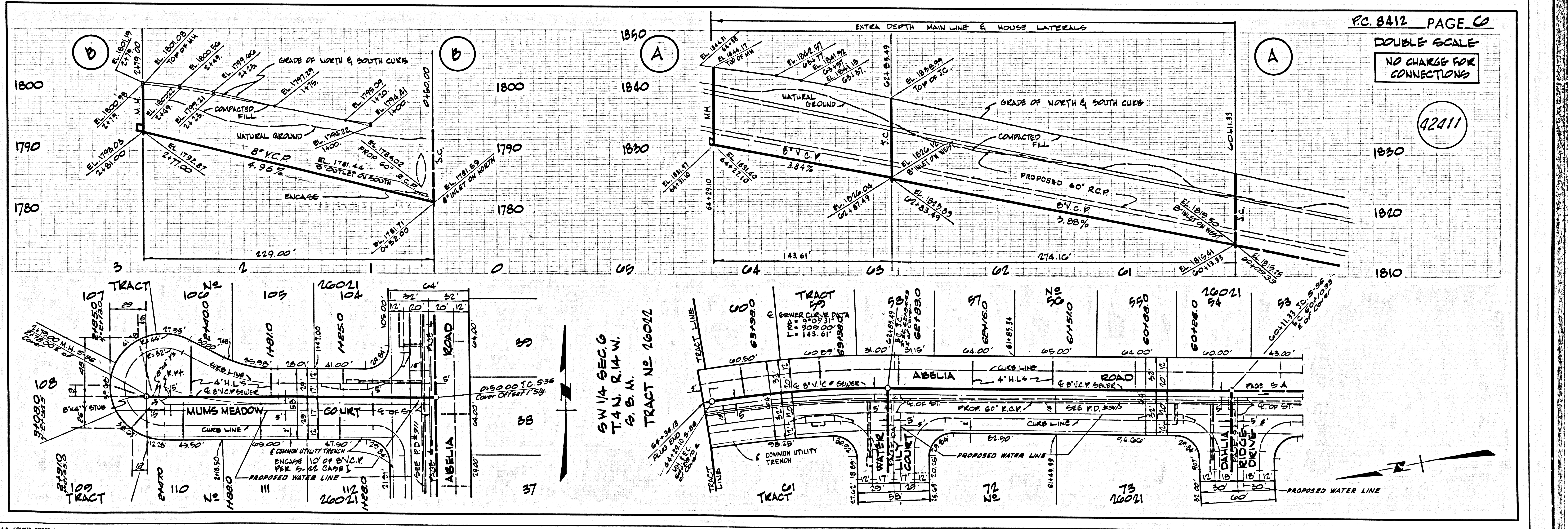
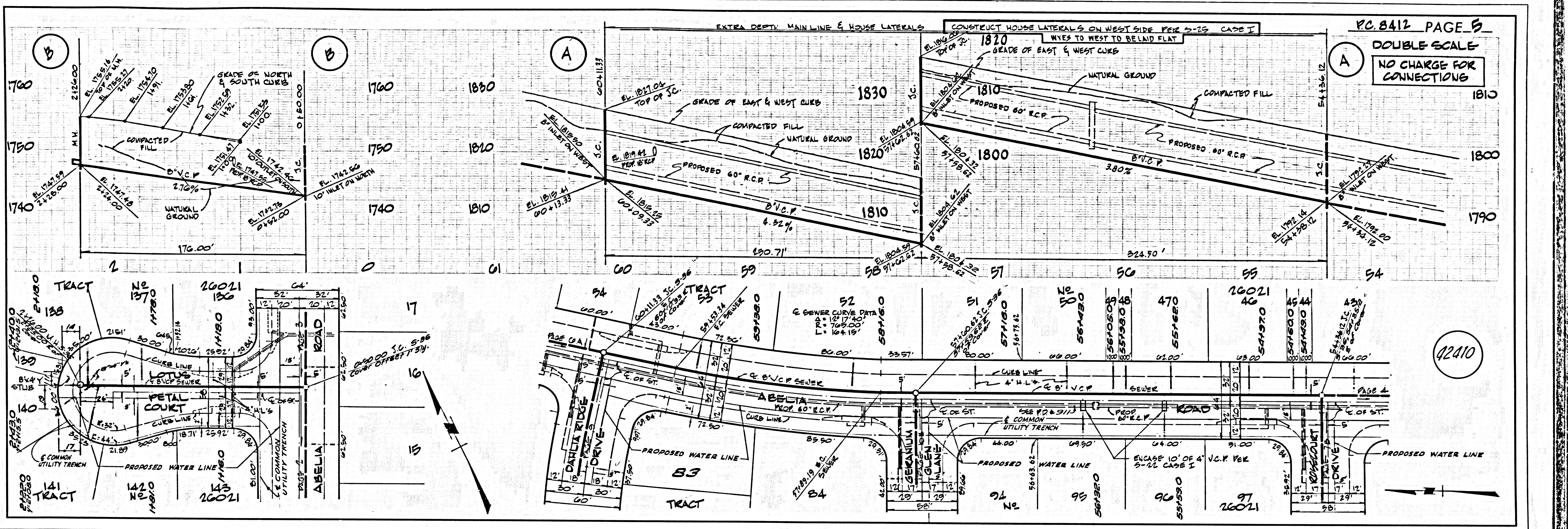


PC 8412 PAGE 3  
 DOUBLE SCALE  
 NO CHARGE FOR CONNECTIONS



PC 8412 PAGE 4  
 DOUBLE SCALE  
 NO CHARGE FOR CONNECTIONS





1/8" = 1' L.A. COUNTY SEWER SHEET NO. 2 BUSINESS SERVICE CO.



