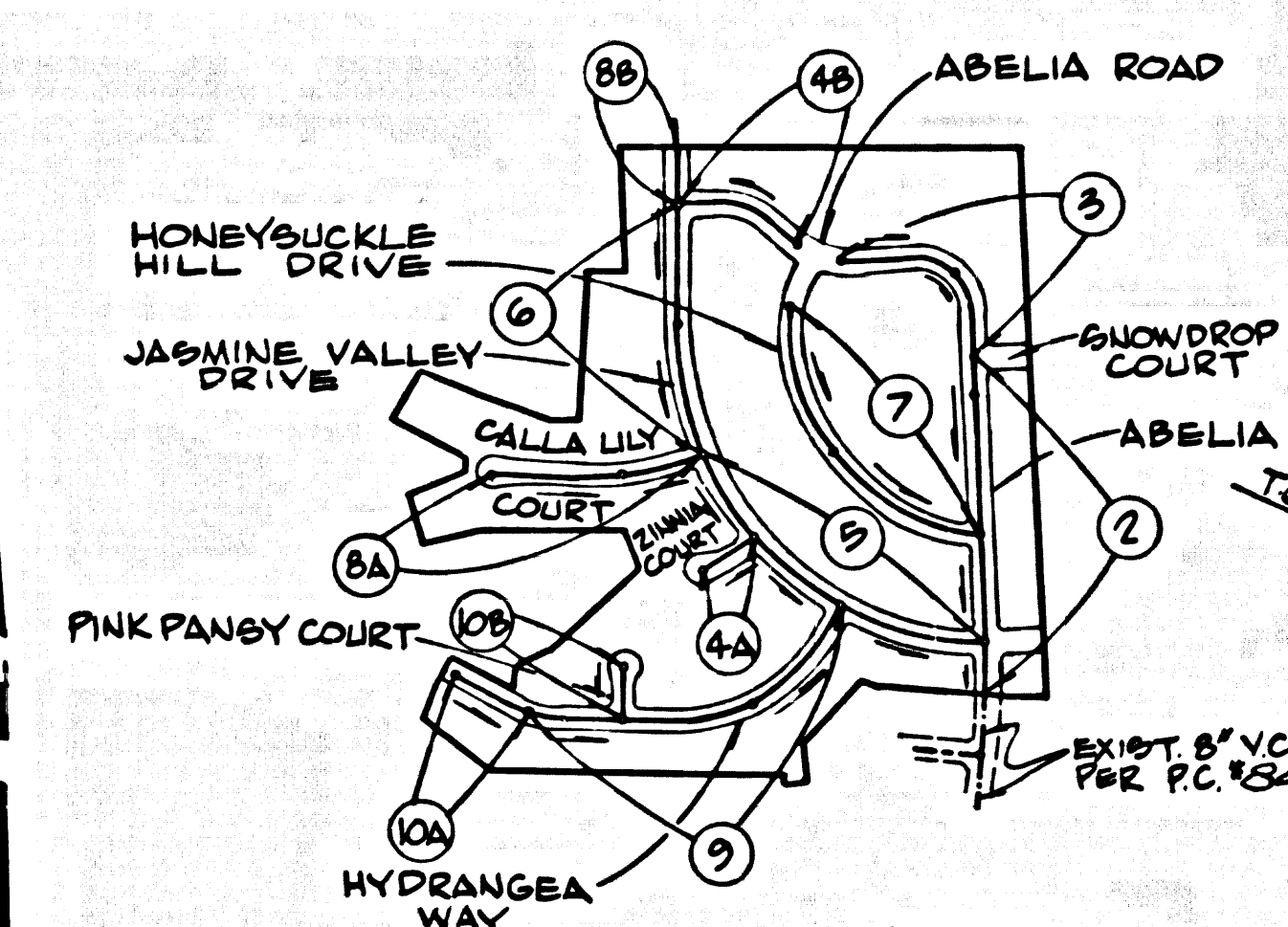


B.M. 3L 1626 ELEV 1568.180
 1.50' + 0.00 RE CAP WIND N INDUL OPER CULV NO 41184 LOC
 3000 FT WLY ALG RR FROM OVERPASS ABOVE OAK SPRINGS
 ON RD + 40 FT N OF CTR TRACKS SAID OVERPASS BEING 0.1 MI.
 SWLY ALG OAK SPRINGS CH RD FROM JCT WITH LOGG CH RD
 MKD (J. 486-1999)
 NEWHALL QUAD. 1928

NOTE: NUMBERS IN CIRCLES
 INDICATE PAGE NUMBER



INDEX MAP
 TRACT NO 26022
 P.C. 8413
 SCALE 1"=600'

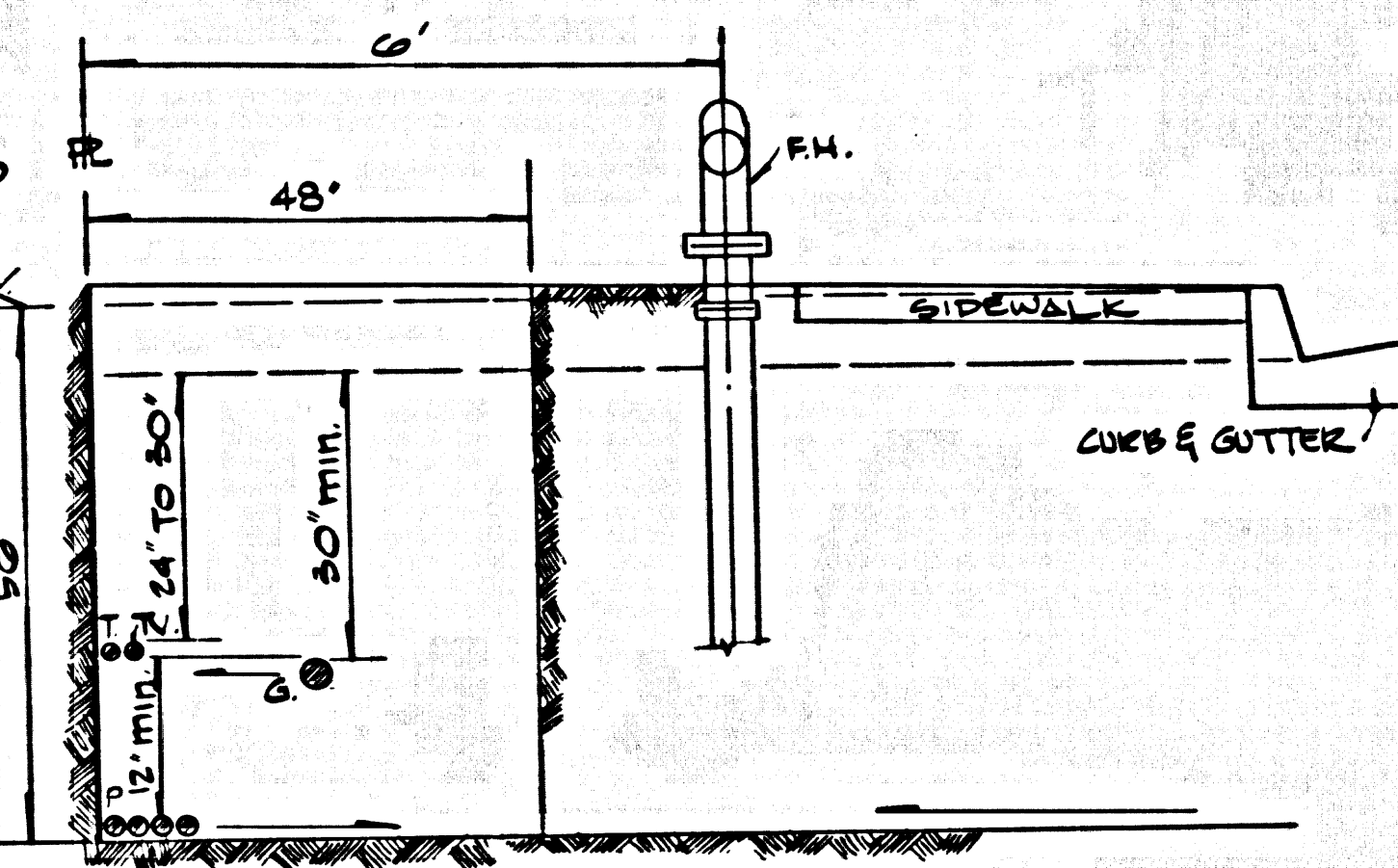
NOTE: FULL COMPLIANCE WITH SECTION 906-1.9.3 OF THE SPECIAL PROVISIONS WILL BE REQUIRED FOR BACKFILL IN STREETS. CERTIFICATION OF BACKFILL COMPACTION AND SAND EQUIVALENTS BY A QUALIFIED REGISTERED TESTING LABORATORY SHALL BE PROVIDED BY THE PERMITTEE PRIOR TO THE ISSUANCE OF A CERTIFICATE OF PARTIAL ACCEPTANCE.

County Sanitation Districts shall be advised prior to the following so that required inspection can be made (Phone 337-1025 - 838-1181)

No connections for the disposal of industrial wastes shall be made to sewerage systems on these drains without written permission from the Chief Engineer and General Manager of the County Sanitation Districts.

Approver of the project.

GRADING TO BE DONE PRIOR TO SEWER CONST.



COMMON UTILITY TRENCH

DOUBLE SCALE
 NEWHALL BLDG. DIST. NO. 8.2

- PROFILES AND GRADE OF
 SANITARY SEWERS
 CONSTRUCTED IN
 TRACT NO 26022
 PRIVATE CONTRACT NO. 8413
 INDEX 2645157
 S.W.S. 73 A-1
- 9 SHEETS, 10 PAGES
 SCALE: VERT. 1"=4'
 HORIZ. 1"=40'
 JULY, 1972
 PREPARED IN THE OFFICES OF
 ENGINEERING SERVICE CORPORATION
 1127 W. WASHINGTON BLVD., LOS ANGELES
 BY: J. R. Newhall
 REG. C. E. NO. 13095
- FOR LEGEND SEE PLAN NO. S-1
- NOTE: GRADES TO WHICH THIS IMPROVEMENT IS TO BE CONSTRUCTED ARE SHOWN ON PLANS AND PROFILES. GRADE POINTS FOR TOP OF CURBS, CENTER LINE OF STREETS, OR CENTER LINE OF ALLEYS ARE SHOWN BY CIRCLES ON PROFILES AT ALL POINTS BETWEEN DESIGNATED POINTS THE GRADE SHALL BE ESTABLISHED SO AS TO CONFORM TO A STRAIGHT LINE DRAWN BETWEEN SAID DESIGNATED POINTS. ELEVATIONS ARE IN FEET ABOVE MEAN SEA LEVEL UNLESS OTHERWISE NOTED. ALL CONSTRUCTION SHALL BE IN ACCORDANCE WITH THE STANDARD SPECIFICATIONS FOR PUBLIC WORKS CONSTRUCTION (1970 EDITION WITH 1971 AND 1972 SUPPLEMENTS) AND THE COUNTY ENGINEER'S SPECIAL PROVISIONS FOR THE CONSTRUCTION OF SANITARY SEWERS DATED APRIL 16, 1978 AND SHALL BE PROSECUTED ONLY IN THE PRESENCE OF THE COUNTY ENGINEER. NO WORK SHALL BE STARTED WITHOUT A PERMIT TO CONSTRUCT FROM THE L.A. COUNTY ROAD DIST. DISTRICT OFFICE NO. 9. 1950 EDITION CITY ENGINEER'S SPECIFICATIONS FOR THE CONSTRUCTION OF SANITARY SEWERS. APPROVAL OF THIS PLAN BY THE COUNTY OF LOS ANGELES DOES NOT CONSTITUTE A REPRESENTATION AS TO THE ACCURACY OF THE LOCATION OR THE EXISTENCE OR NON-EXISTENCE OF ANY UNDERGROUND UTILITY PIPE, OR STRUCTURE WITHIN THE LIMITS OF THIS PROJECT. THIS NOTE APPLIES TO ALL PAGES. IF WORK IS TO BE DONE IN A STATE HIGHWAY, A PERMIT MUST BE OBTAINED FROM THE STATE OF CALIFORNIA, DIVISION OF HIGHWAYS, 120 SOUTH SPRING STREET, LOS ANGELES, CALIFORNIA.
- PROVIDE STAKES ON THE PROPERTY LINE OR PROPERTY LINES PRODUCED AT RIGHT ANGLES TO THE SEWER LINE AT THE CENTER LINE OF EACH MANHOLE.
 - NO REPRESENTATIVE OF THE COUNTY ENGINEER WILL SURVEY OR LAY OUT ANY PORTION OF THE WORK.
 - THE PRIVATE ENGINEER SHALL FURNISH THE COUNTY ENGINEER WITH GRADE SHEETS AND STATIONING FOR ALL HOUSE LATERALS "T" OR "T" BRANCHES AND SHALL PROVIDE STAKES FOR THEM AT THEIR PROPER LOCATIONS WITH STATIONING PLAINLY MARKED. ALL HOUSE LATERALS SHALL BE CONSTRUCTED IN A STRAIGHT ALIGNMENT AT RIGHT ANGLES FROM THE MAIN LINE SEWER EXCEPT AS SHOWN ON THE PLANS. HOUSE LATERALS FROM CHIMNEYS SHALL NETWORK AN ANGLE OF LESS THAN 90 DEGREES FROM THE MAINLINE SEWER. ANY CHANGE IN ALIGNMENT SHALL BE REQUESTED IN WRITING BY THE PRIVATE ENGINEER.
 - THE PRIVATE ENGINEER SHALL FURNISH THE HOUSE LATERAL DEPTH AT THE PROPERTY LINE BELOW THE TOP OF CURB ELEVATION FOR EACH HOUSE LATERAL ON THE GRADE SHEET.
 - NO REVISIONS SHALL BE MADE IN THESE PLANS WITHOUT THE APPROVAL OF THE COUNTY ENGINEER.
 - THE CONTRACTOR SHALL NOTIFY THE CONSTRUCTION DIVISION BY TELEPHONE, MADISON 9-6707, EXT. 81551, AT LEAST TWENTY-FOUR HOURS BEFORE STARTING ANY WORK UNDER THIS CONTRACT.
 - ALL MANHOLES SHALL BE BRICK SEWER SPEC. CURBS PER S-3 OR PRECAST CONCRETE MANHOLES PER S-3 & S-30.
 - "T" OR "T" BRANCHES MAY BE USED FOR CONNECTIONS TO MAINLINE SEWER EXCEPT AS NOTED.
 - USE EXTRA STRENGTH PIPE. ALL PIPE IS STANDARD DEPTH EXCEPT AS NOTED.
 - VITRIFIED CLAY PIPE JOINTS SHALL BE TYPE "D" "E" OR "S" PER STD SPEC. 308-2.
 - IF A POWER POLE IS WITHIN THREE FEET OF THE SEWER, THE SEWER SHALL BE ENCASED, PER S-23, TWO FEET ON EACH SIDE FROM THE POINT OF INTERFERENCE.
 - IF DURING THE COURSE OF CONSTRUCTION IT IS DETERMINED THAT THERE IS LESS THAN FOUR FEET OF COVER OVER THE TOP OF A MAIN LINE OR HOUSE LATERAL V.C.P. SEWER WHICH IS NOT INDICATED ON THE PLANS, THE PIPE SHALL BE ENCASED PER S-23, UNLESS OTHERWISE APPROVED BY THE COUNTY ENGINEER.
 - HOUSE LATERALS TO BE CONSTRUCTED WITH INVERTS AT PROPERTY LINE 4 FEET BELOW CURB GRADE EXCEPT AS NOTED.
 - RESURFACE ALL TRENCHES WITHIN PAVED AREAS TO MEET L.A. COUNTY ROAD DEPT. OR CALIFORNIA STATE HIGHWAY REQUIREMENTS IN ACCORDANCE WITH PERMITS.
 - SEWERS TO BE TESTED FOR LEAKAGE PER SECTION 906-2.3.7 OF THE STANDARD SPECIFICATIONS AND SPECIAL PROVISIONS.
 - REFER TO SECTION 7-10.6.1. OF THE STANDARD SPECIFICATIONS, REGARDING SAFETY DEVICES.
 - SPECIAL BACKFILL IN DESIGNATED AREAS:
 - (a) BACKFILL TRENCH AND BRACKLE OTHER EARTH REMOVED SO AS TO ACHIEVE THE NATURAL OR FINISHED GRADES AND SLOPES SHOWN ON THE GRADING PLAN APPROVED FOR THE TRACT BY THE BUILDING AND SAFETY DIVISION.
 - (b) ALL BACKFILL AND EARTH REPLACED SHALL BE COMPACTED TO A MINIMUM OF 90% OF MAXIMUM DENSITY PER ASTM STAND. AND METHOD OF TEST SHOWN BY AS NOTED. ACCEPTABLE CERTIFICATION OF SUCH COMPACTION SHALL BE SUBMITTED TO THE CONSTRUCTION DIVISION.
 - (c) ALL TRENCHES BETWEEN CURB, FROM PIPE AND VITRIFIED CLAY PIPE SHALL BE BACKFILL WITH FUMBERG ALUMINA BENTONITE TYPE "C" OR "D" WITH DRAINAGE IF NECESSARY PER STANDARD SPECIFICATIONS, SECTION 220-2.
 - THE FOLLOWING COUNTY ENGINEER STD. PLANS APPLY TO THIS PROJECT:

LEAD	MINIMUM PUBLIC SAFETY REQUIREMENTS	S-1
BRICK MANHOLE		S-2
NON REINFORCED PRECAST CONCRETE MANHOLE		S-3
MANHOLE FRAMES AND COVER		S-35
REINFORCED CONCRETE MANHOLE		S-36
BEDDING FOR SEWER PIPE		S-37
CRADLING AND ENCASMENT		S-38
WYS OR TIE BRANCH TO MAIN		S-39
SPECIAL HOUSE LATERALS		S-40
SPECIAL SUPPORT AND PROTECTION		S-42

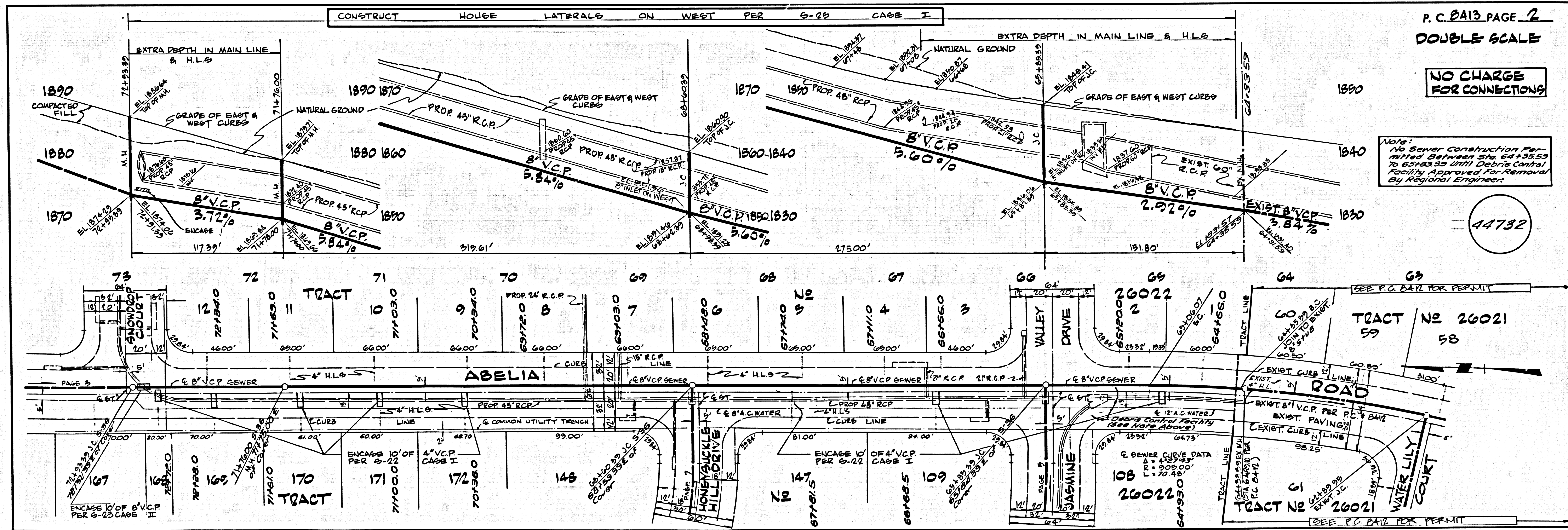
ISSUE NO HOUSE CONNECTION PERMITS UNTIL PC 8413 IS ACCEPTED

COLLECT CHARGES AS INDICATED

COUNTY OF LOS ANGELES, CALIFORNIA
 HARVEY T. BRANDT, COUNTY ENGINEER
 APPROVED BY: J. R. Newhall REGIONAL ENGINEER
 APPROVED BY: J. D. Parkhurst, CHIEF ENGINEER
 OFFICE ENGINEER

CHECKED BY: Robert J. ... 9/10/72
 REG. CE. NO. 14220

J. N. 0150.02

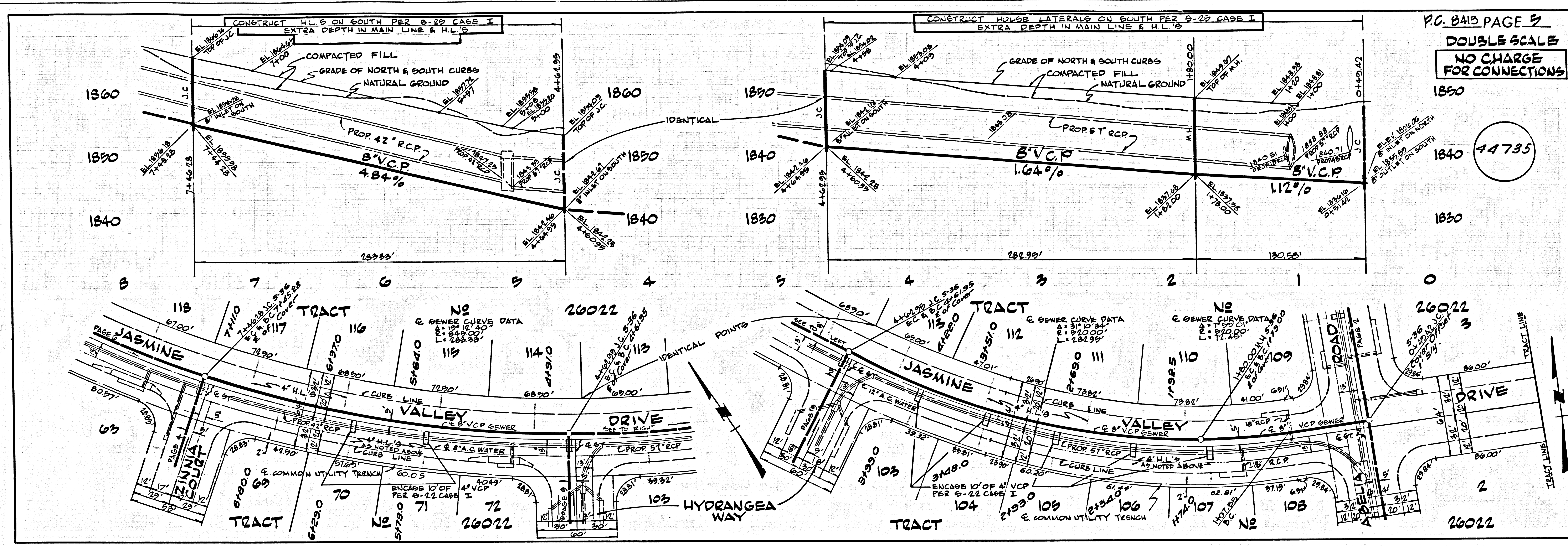


P.C. 8413 PAGE 2
 DOUBLE SCALE

NO CHARGE FOR CONNECTIONS

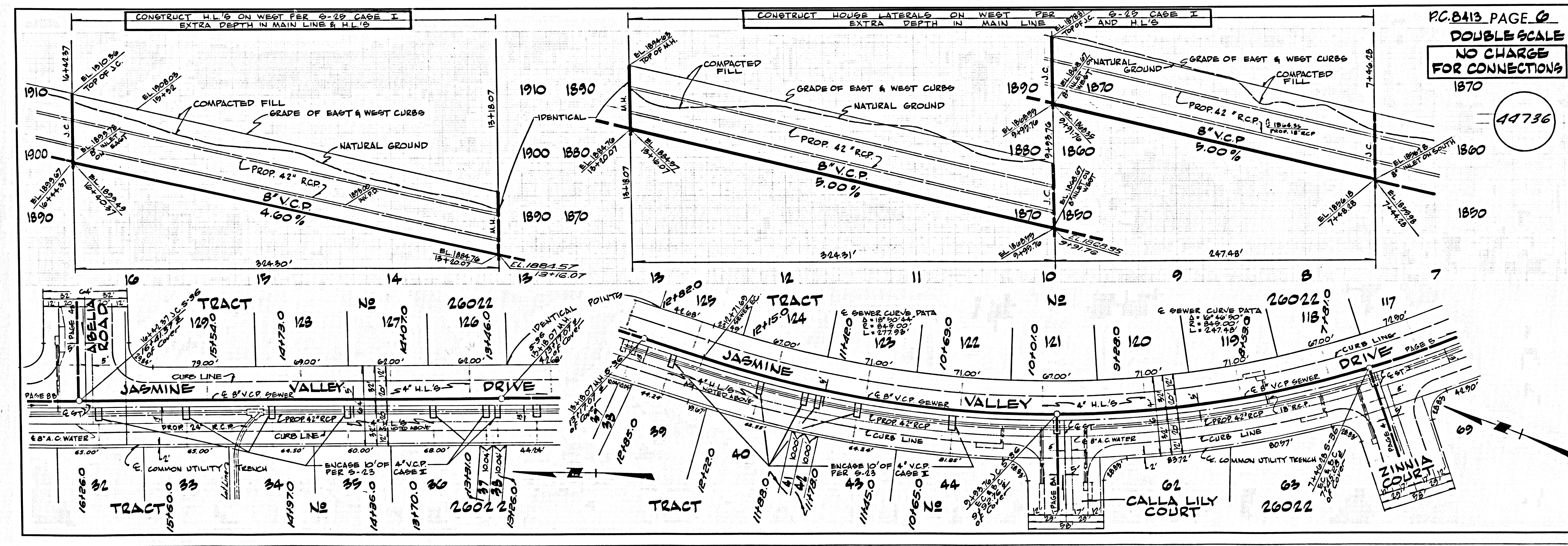
Note: No Sewer Construction Permitted Between Sta. 64+35.50 To 65+83.50 Until Debris Control Facility Approved For Removal By Regional Engineer.

44732



PC. 8413 PAGE 5
 DOUBLE SCALE
 NO CHARGE
 FOR CONNECTIONS

44735



PC. 8413 PAGE 6
 DOUBLE SCALE
 NO CHARGE
 FOR CONNECTIONS

44736

