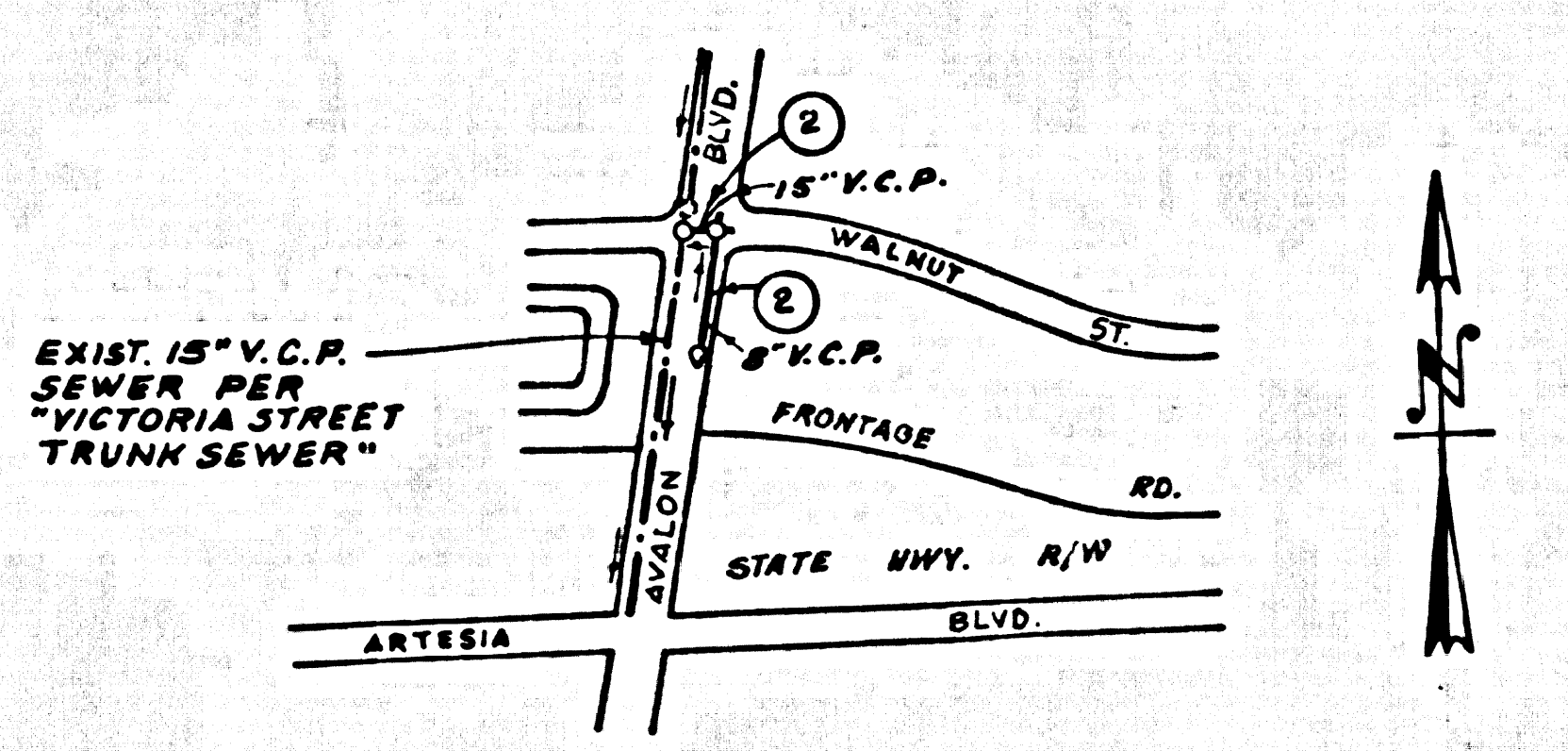


B.M. 8Y.3128 ELEV. 49.319
 L-SPK. CONC. BASE NE. LEG POWER
 TRANSMISSION TOWER NO. 40 C/L
 AVALON BLVD. 1 ST. TOWER N OF
 ARTESIA BLVD. QUAD. 1965



INDEX MAP
 P.C. 8415
 SCALE 1"=600'

REVISION 5/1/70
 MOVED 15" V.C.P. SEWER MAINLINE FROM 5' NORTH
 OF TO 5' SOUTH OF E WALNUT ST.; REVISED GRADES
 ALL ON PAGE 2
 APPROVED *[Signature]* R.C.E. 10673

County Sanitation Districts shall be notified prior to the following so that required inspections can be made (Phone 604-1067 or 606-8097)

Commencement of construction of man hole on District trunk sewer.
 Acceptance of the project.

No connections for the disposal of industrial wastes shall be made to sewers shown on these drawings without written permission from the Chief Engineer and General Manager of the County Sanitation Districts.

- NOTES:
1. PROFILE STAKES ON THE PROPERTY LINE OR PROPERTY LINES PRODUCED AT RIGHT ANGLES TO THE SEWER LINE AT THE CENTER LINE OF EACH MANHOLE.
 2. NO REPRESENTATIVE OF THE COUNTY ENGINEER WILL SURVEY OR LAY OUT ANY PORTION OF THE WORK.
 3. THE PRIVATE ENGINEER SHALL FURNISH THE COUNTY ENGINEER WITH GRADE SHEETS AND STATIONING FOR ALL HOUSE LATERALS AND "Y" BRANCHES AND SHALL PROVIDE STAKES FOR THEM AT THEIR PROPER LOCATIONS WITH STATIONING PLAINLY MARKED. ALL HOUSE LATERALS SHALL BE CONSTRUCTED IN A STRAIGHT ALIGNMENT AT RIGHT ANGLES FROM THE MAIN LINE SEWER EXCEPT AS SHOWN ON THE PLANS. HOUSE LATERALS FROM CHIMNEYS SHALL NOT HAVE AN ANGLE OF LESS THAN 45° WITH THE MAIN LINE SEWER. ANY CHANGE IN ALIGNMENT SHALL BE REQUESTED IN WRITING BY THE PRIVATE ENGINEER.
 4. THE PRIVATE ENGINEER SHALL FURNISH THE HOUSE LATERAL DEPTH AT THE PROPERTY LINE BELOW THE TOP OF CURB ELEVATION FOR EACH HOUSE LATERAL ON THE GRADE SHEET.
 5. NO REVISIONS SHALL BE MADE IN THESE PLANS WITHOUT THE APPROVAL OF THE COUNTY ENGINEER.
 6. THE CONTRACTOR SHALL NOTIFY THE CONSTRUCTION DIVISION BY TELEPHONE, HARBOR 8-4747, EXT. 81851, AT LEAST TWENTY-FOUR HOURS BEFORE STARTING ANY WORK UNDER THIS CONTRACT.
 7. ALL STRUCTURES SHALL BE EITHER BRICK MANHOLES PER S-3 OR PRECAST CONCRETE MANHOLES PER S-5 OR S-6, EXCEPT AS NOTED.
 8. FIGURES IN CIRCLES AT ENDS OF HOUSE LATERALS INDICATE DEPTH BELOW CURB GRADE.
 9. MANHOLE TOPS IN UNIMPROVED RIGHTS-OF-WAY TO BE SIX INCHES ABOVE FINISHED GRADE.
 10. USE EXTRA STRENGTH PIPE, ALL PIPE IS STANDARD DEPTH EXCEPT AS NOTED.
 11. UNTRIEVED CLAY PIPE JOINTS SHALL BE TYPE "D", "F" OR "G" PER STD. SPEC. SEC. 2082.
 12. IF A POWER POLE IS WITHIN THREE FEET OF THE SEWER, THE SEWER SHALL BE ENCASED, PER S-23, TWO FEET ON EACH SIDE FROM THE POINT OF INTERFERENCE.
 13. IF DURING THE COURSE OF CONSTRUCTION IT IS DETERMINED THAT THERE IS LESS THAN FOUR FEET OF COVER OVER THE TOP OF A MAIN LINE OR HOUSE LATERAL V.C.P. SEWER WHICH IS NOT INDICATED ON THE PLANS, THE PIPE SHALL BE ENCASED PER S-23, UNLESS OTHERWISE APPROVED BY THE COUNTY ENGINEER.
 14. HOUSE LATERALS TO BE CONSTRUCTED WITH INVERTS AT PROPERTY LINE 4 FEET BELOW CURB GRADE EXCEPT AS NOTED.
 15. RESURFACE ALL TRENCHES WITHIN PAVED AREAS TO MEET L.A. COUNTY ROAD DEPT. OR CALIFORNIA STATE HIGHWAY REQUIREMENTS IN ACCORDANCE WITH PERMITS.
 16. SEWERS TO BE TESTED FOR LEAKAGE PER SEC. 306-237, STD. SPEC.
 17. REFER TO SEC. 7-10-4-1 OF THE STD. SPEC. REGARDING SAFETY ORDERS.

LEGEND

MIN. ELEVATION SAFETY REQUIREMENTS	S-1
BRICK MANHOLE	S-3
NON-REINFORCED PRECAST CONC. MANHOLE	S-5
REINFORCED PRECAST CONC. MANHOLE	S-6
MANHOLE FRAME AND COVER	S-15
MANHOLE STEP	S-17
BEDDING FOR SEWER PIPE	S-21
GRADING AND ENCASUREMENT	S-22
WYE AND TEE SUPPORT	S-23
ALLOWABLE TRENCH WIDTH	S-24

NOTICE TO CONTRACTOR
 The existence and location of any underground utility pipes or structures shown on these plans are obtained by a search of the available records. To the best of my knowledge there are no existing utilities except as shown on these plans. The contractor is required to take due precautionary measures to protect the utility lines shown and any other lines not shown on these plans.

COLLECT CHARGES AS INDICATED

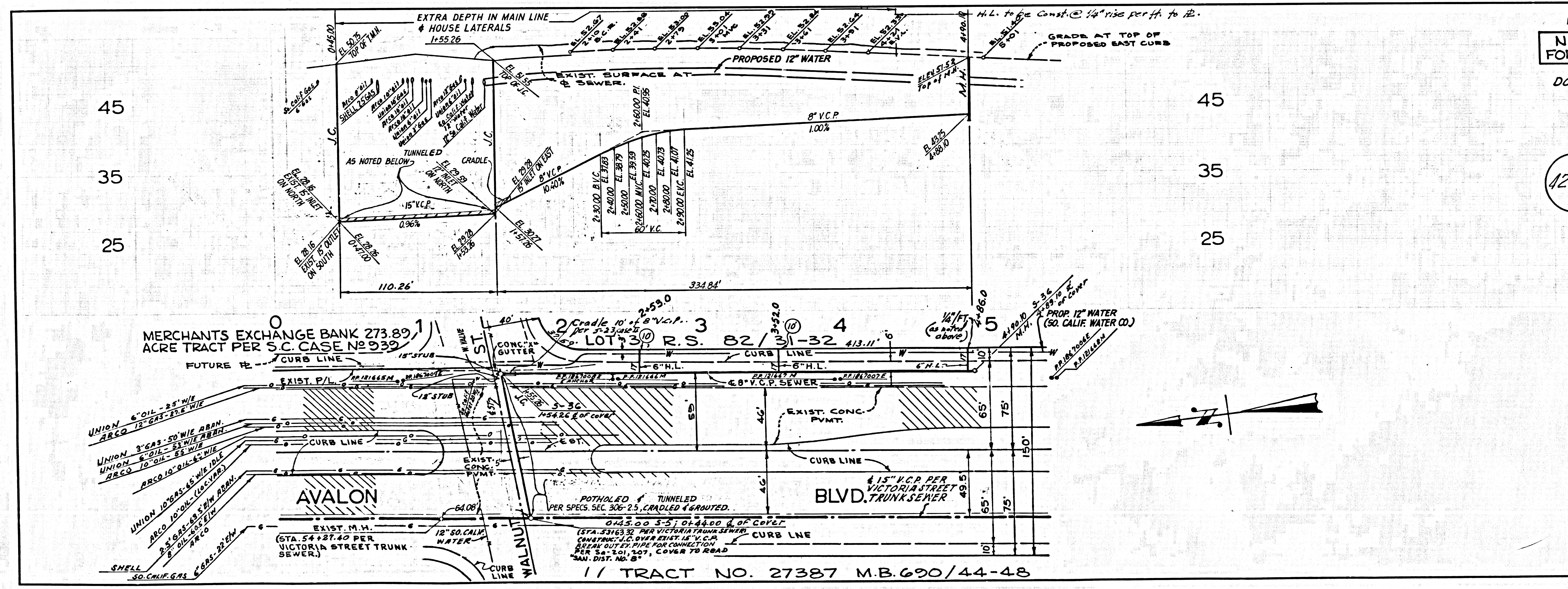
FOR LEGEND SEE PLAN NO. S-1
 FOR PUBLIC WORKS CONSTRUCTION AND COUNTY ENGINEER (SPECIAL PROVISIONS DATED JAN. 2, 1969) AS REVISED.
 PREPARED IN THE OFFICES OF
 J. H. EDWARDS CO.
 18011 GREENHAWK PL.
 TORRANCE, CALIF.
 REG. C.E. NO. 11302

COUNTY OF LOS ANGELES, CALIFORNIA
 JOHN A. LAMBIE, COUNTY ENGINEER J. D. PARKHURST, CHIEF ENGINEER
 CO. SAN. DIST. NO. 13
 APPROVED BY *[Signature]* 2-13-70 APPROVED BY *[Signature]*
 REGIONAL ENGINEER OFFICE ENGINEER

CHECKED BY *[Signature]* 5/1/70
 REG. C.E. NO. 19653

12701

J. N. 0370.28



P.C. 8415 PAGE 2
 NO CHARGE FOR CONNECTIONS
 DOUBLE SCALE

12702