

B.M. B.Y. 3128 ELEV. 49.319  
 1.5PK. CONC. BASE NE LEG POWER TRANSMISSION TOWER NO. 40 C/L AVALON BLVD. 1ST. TOWER N OF ARTESIA BLVD. GARDENA QUAD. 1965

**REVISIONS 4/13/71**  
 INCREASED DEPTH OF SEWER FROM STA. 35+00 TO 42+10.  
 CHANGED LOCATION FUTURE STREET & SEWER TO STA. 10+22.30, 22+17.75, & 41+14.00.  
 INCREASED LENGTH OF SEWER FROM STA. 6+25.50 TO 6+51.50.  
 INCREASED SIZE OF PIPE (10" V.C.P.) FROM STA. 35+00 TO 42+10.  
 ADDED INVERT ELEV. ON C.M.H.L. ON NORTH SIDE.  
 NOTED IN PLAN & PROFILE - "Y" ON NORTH SIDE TO BE LAND PLAT.  
 APPROVED *Edward J. Valdey* 4/16/71

CITY OF CARSON BLDG. DIST. NO. 12.05

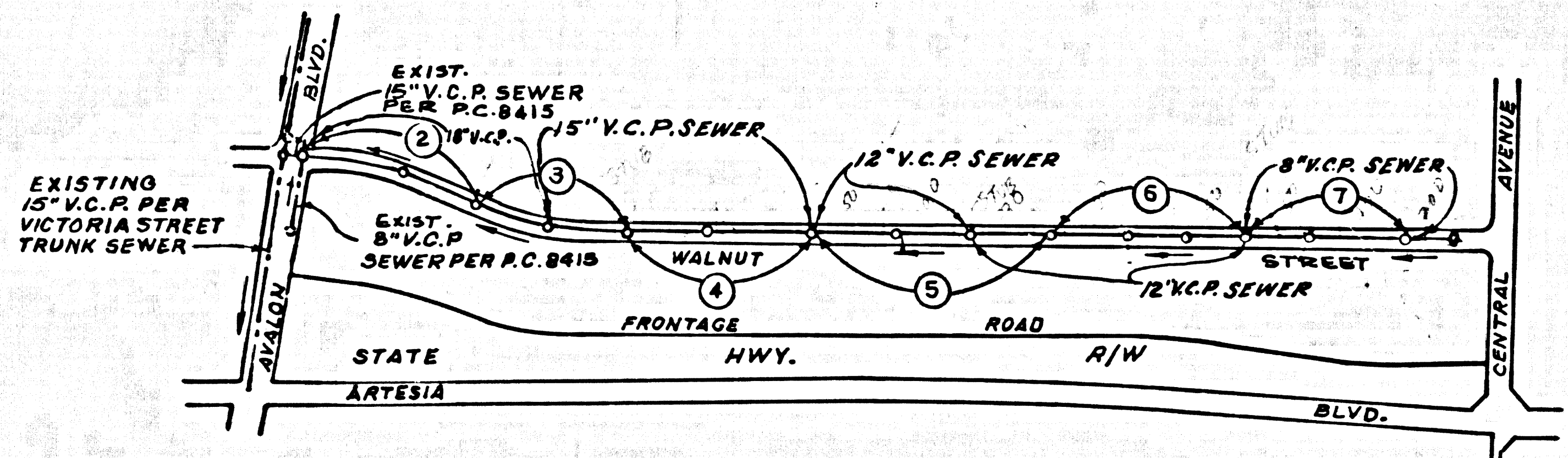
PROFILE ALIGNMENT AND GRADE OF P.C. 8416  
 SANITARY SEWERS PAGE 1

TO BE CONSTRUCTED IN  
 WALNUT STREET  
 PRIVATE CONTRACT NO. 8416

W.S. 26  
 4 SHEETS, 7 PAGES

SCALE: VERT. 1"=8'  
 HORIZ. 1"=40'

NOV. 1969  
 PREPARED IN THE OFFICES OF  
 J.H. EDWARDS CO.  
 18911 CRENSHAW PLACE,  
 TORRANCE, CALIFORNIA.  
 REG. C. E. NO. 11302



INDEX MAP  
 P.C. 8416  
 SCALE: 1"=600'

No connections for the proposed project shall be made to existing sewer lines or to any other sewer lines of the County Sanitation Districts.

County Sanitation Districts shall be notified of the proposed project as follows: (State of California, Public Resources Code, Section 600-9077)

Acceptance of the project.

NOTE:  
 ISSUE NO HOUSE CONNECTION PERMITS UNTIL STREET IS DEDICATED.

- NOTES:
- PROVIDE STAKES ON THE PROPERTY LINE OR PROPERTY LINES PRODUCED AT RIGHT ANGLES TO THE SEWER LINE AT THE CENTER LINE OF EACH MANHOLE.
  - NO REPRESENTATIVE OF THE CITY ENGINEER WILL SURVEY OR LAY OUT ANY PORTION OF THE WORK.
  - THE PRIVATE ENGINEER SHALL FURNISH THE CITY ENGINEER WITH GRADE SHEETS AND STATIONING FOR ALL HOUSE LATERALS AND "T" BRANCHES AND SHALL PROVIDE STAKES FOR THEM AT THEIR PROPER LOCATIONS WITH STATIONING PLAINLY MARKED. ALL HOUSE LATERALS SHALL BE CONSTRUCTED IN A STRAIGHT ALIGNMENT AT RIGHT ANGLES FROM THE MAIN LINE SEWER EXCEPT AS SHOWN ON THE PLANS. HOUSE LATERALS FROM CHIMNEYS SHALL NOT HAVE AN ANGLE OF LESS THAN 45° WITH THE MAIN LINE SEWER. ANY CHANGE IN ALIGNMENT SHALL BE REQUESTED IN WRITING BY THE PRIVATE ENGINEER.
  - THE PRIVATE ENGINEER SHALL FURNISH THE HOUSE LATERAL DEPTH AT THE PROPERTY LINE BELOW THE TOP OF CURB ELEVATION FOR EACH HOUSE LATERAL ON THE GRADE SHEET.
  - NO REVISIONS SHALL BE MADE IN THESE PLANS WITHOUT THE APPROVAL OF THE CITY ENGINEER.
  - THE CONTRACTOR SHALL NOTIFY THE CONSTRUCTION DIVISION BY TELEPHONE, HAMBURG 7-470, EXT. 8151, AT LEAST TWENTY-FOUR HOURS BEFORE STARTING ANY WORK UNDER THIS CONTRACT.
  - ALL STRUCTURES SHALL BE EITHER BRICK MANHOLES PER S-3 OR PRECAST CONCRETE MANHOLES PER S-36 EXCEPT AS NOTED.
  - FIGURES IN CIRCLES AT ENDS OF HOUSE LATERALS INDICATE DEPTH BELOW CURB GRADE OR GRADE OF CENTERLINE.
  - MANHOLE TOPS IN UNIMPROVED PORTIONS OF WAY TO BE SIX INCHES ABOVE FINISHED GRADE.
  - USE EXTRA STRENGTH PIPE. ALL PIPE IS STANDARD DEPTH EXCEPT AS NOTED.
  - VITRIFIED CLAY PIPE JOINTS SHALL BE TYPE "D", "F" OR "G" PER STD. SPEC. SEC. 408E.
  - IF A POWER POLE IS WITHIN THREE FEET OF THE SEWER, THE SEWER SHALL BE ENCASED, PER S-22, TWO FEET ON EACH SIDE FROM THE POINT OF INTERFERENCE.
  - IF DURING THE COURSE OF CONSTRUCTION IT IS DETERMINED THAT THERE IS LESS THAN FOUR FEET OF COVER OVER THE TOP OF A MAIN LINE OR HOUSE LATERAL V.C.P. SEWER WHICH IS NOT INDICATED ON THE PLANS, THE PIPE SHALL BE ENCASED PER S-25, UNLESS OTHERWISE APPROVED BY THE CITY ENGINEER.
  - HOUSE LATERALS TO BE CONSTRUCTED WITH INVERTS AT PROPERTY LINE 4 FEET BELOW CURB GRADE EXCEPT AS NOTED.
  - RESURFACE ALL TRENCHES WITHIN PAVED AREAS TO MEET L.A. COUNTY ROAD DEPT. OR CALIFORNIA STATE HIGHWAY REQUIREMENTS IN ACCORDANCE WITH PERMITS.
  - SEWERS TO BE TESTED FOR LEAKAGE PER SEC. 905-297, STD. SPEC.
  - REFER TO SEC. 7-10-4-1 OF THE STD. SPEC. REGARDING SAFETY OF DRIVERS.
- THE FOLLOWING LATEST REVISED STANDARD PLANS ON FILE IN THE OFFICE OF THE CITY ENGINEER SHALL APPLY IN THE CONSTRUCTION OF THIS PROJECT.
- LEGEND:
- MIN. EXCAVATION SAFETY REQUIREMENTS S-2
  - BRICK MANHOLE S-3
  - NON-REINFORCED PRECAST CONC. MANHOLES S-36
  - MANHOLE FRAME AND COVER S-25
  - MANHOLE STEP S-17
  - BEDDING FOR SEWER PIPE S-21
  - CRADLE AND ENCASEMENT S-23
  - WVE AND TEE SUPPORT S-26
  - ALLOWABLE TRENCH WIDTH S-23
  - CHIMNEY PIPE AND BASE S-27

COLLECT CHARGES AS INDICATED

NOTICE TO CONTRACTOR

The existence and location of any underground utility pipes or structures shown on these plans are obtained by a search of the available records. To the best of my knowledge there are no existing utilities except as shown on these plans. The contractor is required to take due precautionary measures to protect the utility lines shown and any other lines not of record or not shown on these plans.

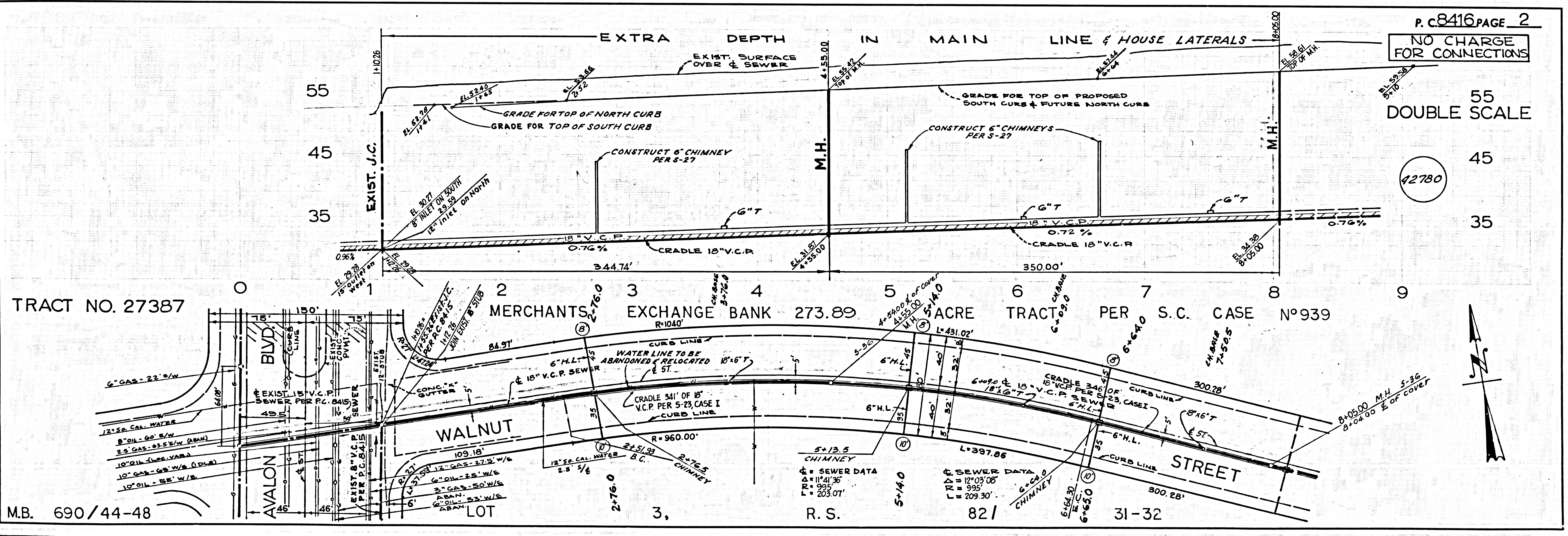
FOR LEGEND SEE PLAN NO. S-1  
 NOTE: (FOR PUBLIC WORKS CONSTRUCTION (PROTECTION) AND CITY ENGINEER SPECIAL) (FOR PRIVATE CONTRACTORS FOR THE CONSTRUCTION OF SANITARY SEWERS) DATED APRIL 2, 1970  
 GRADES TO WHICH THIS IMPROVEMENT IS TO BE CONSTRUCTED ARE SHOWN ON PLANS AND PROFILES. GRADE POINTS FOR TOP OF CURB, CENTER LINE OF STREETS, OR CENTER LINE OF ALLEYS ARE SHOWN ON PROFILES. AT ALL POINTS BETWEEN DESIGNATED POINTS THE GRADE SHALL BE ESTABLISHED SO AS TO CONFORM TO A STRAIGHT LINE DRAWN BETWEEN SAID DESIGNATED POINTS. ELEVATIONS ARE IN FEET ABOVE U.S.C. & G.S. SEA LEVEL DATUM OF 1929.  
 THIS DRAWING AND THE DATA HEREON ARE HEREBY MADE A PART OF THE SPECIFICATIONS.  
 WORK SHALL BE CONSTRUCTED ACCORDING TO STANDARD SPECIFICATIONS AND SHALL BE PROTECTED ONLY IN THE PRESENCE OF THE CITY ENGINEER.  
 BEFORE WORK CAN BE STARTED, THE CONTRACTOR MUST OBTAIN A PERMIT TO EXCAVATE IN CITY STREETS FROM THE L.A. COUNTY ROAD DEPT., DISTRICT OFFICE NO. 3, AND PAY A FEE TO THE CITY ENGINEER.  
 CONSTRUCTION INSPECTION AND SECOND PLANS  
 APPROVAL OF THIS PLAN BY THE CITY OF CARSON DOES NOT CONSTITUTE A REPRESENTATION AS TO THE ACCURACY OF THE LOCATION OR OF THE EXISTENCE OF ANY UNDERGROUND UTILITY PIPE OR STRUCTURE WITHIN THE LIMITS OF THIS PROJECT. THIS NOTE APPLIES TO ALL PAGES.  
 IF WORK IS TO BE DONE IN A STATE HIGHWAY, A PERMIT MUST BE OBTAINED FROM THE STATE OF CALIFORNIA, DIVISION OF HIGHWAYS, 130 SOUTH SPRING STREET, LOS ANGELES, CALIFORNIA.

CITY OF CARSON, CALIFORNIA  
 JOHN A. LAMBIE, CITY ENGINEER  
 J. D. PARKHURST, CHIEF ENGINEER  
 CO. SAN. DIST. NO. 3

APPROVED BY *Robert J. Miller* 7-22-70 REGIONAL ENGINEER  
 APPROVED BY *Edward J. Valdey* OFFICE ENGINEER

CHECKED BY *Edward J. Valdey* 7/21/70  
 REG. C.E. NO. 10553

J.N.0370.29



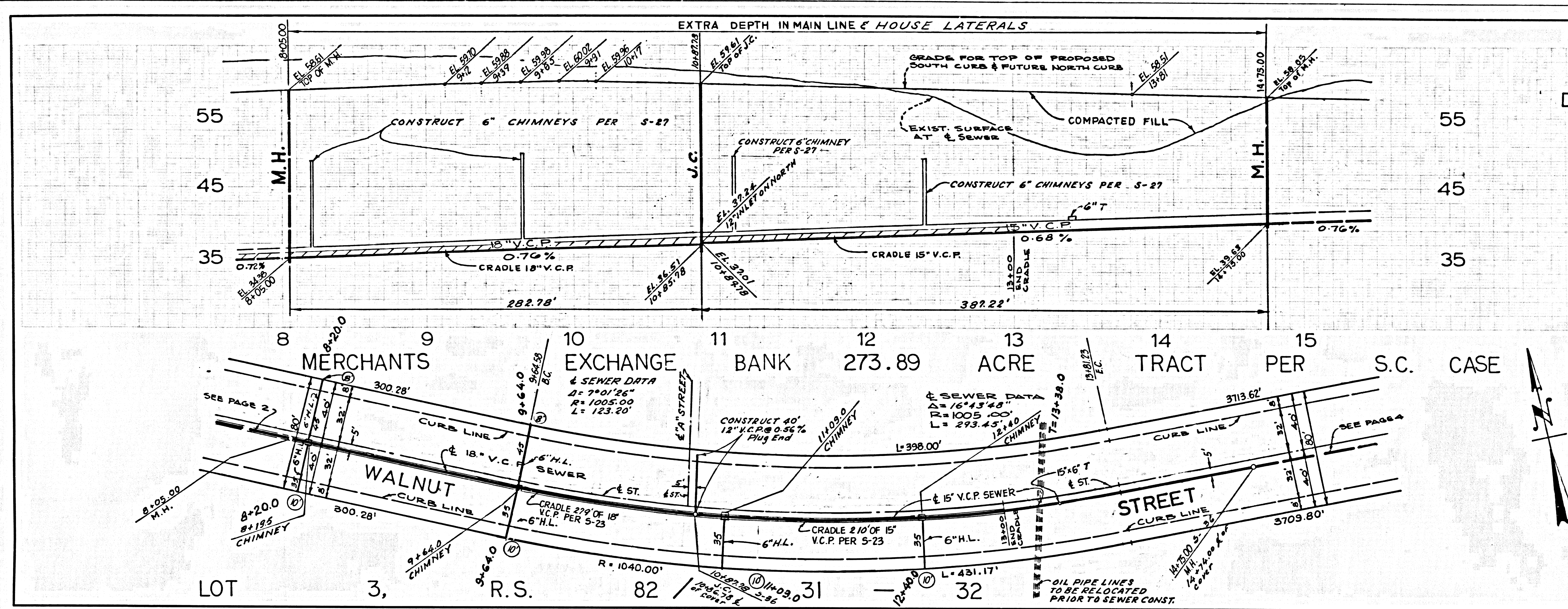
P.C. 8416 PAGE 2  
 NO CHARGE FOR CONNECTIONS

55 DOUBLE SCALE  
 45  
 35

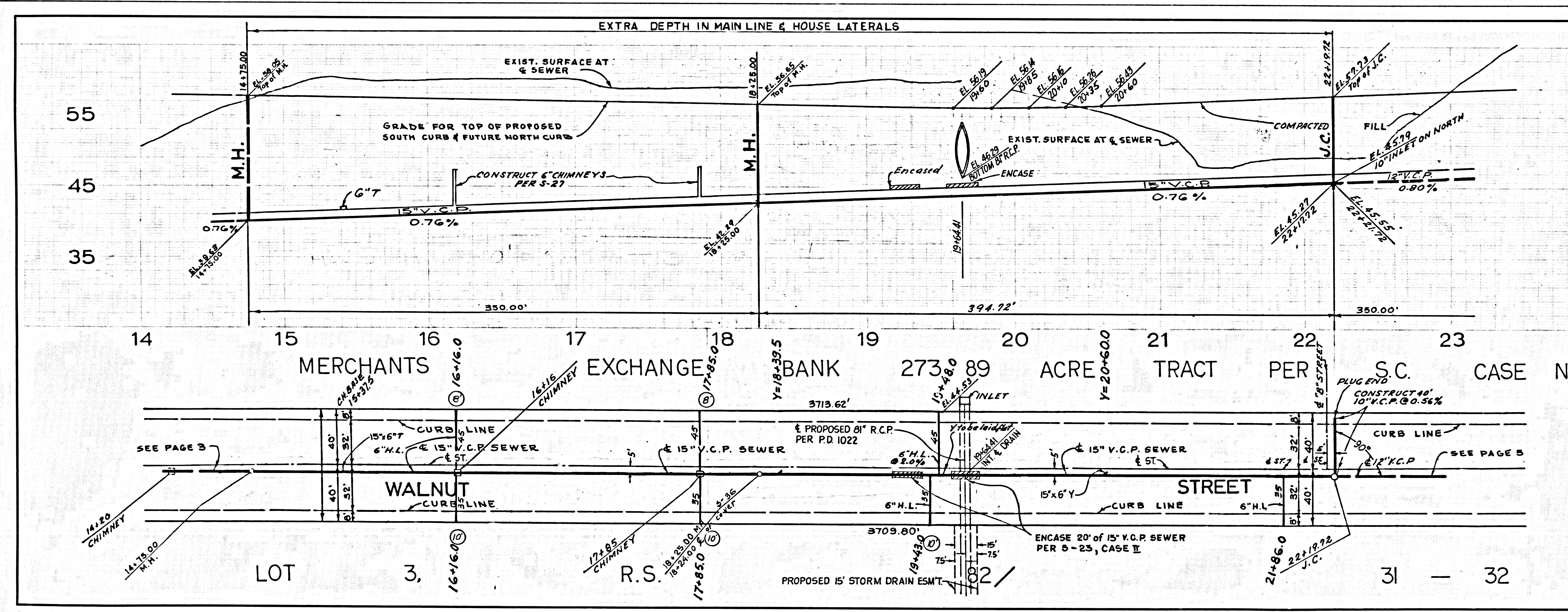
42780

TRACT NO. 27387

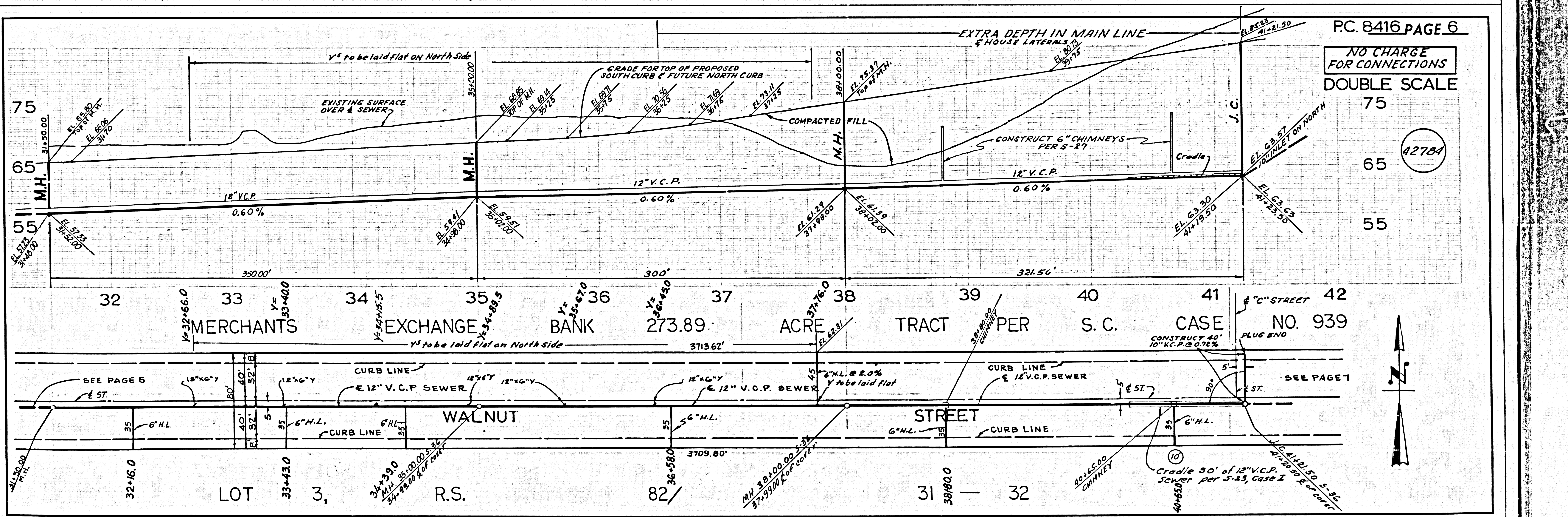
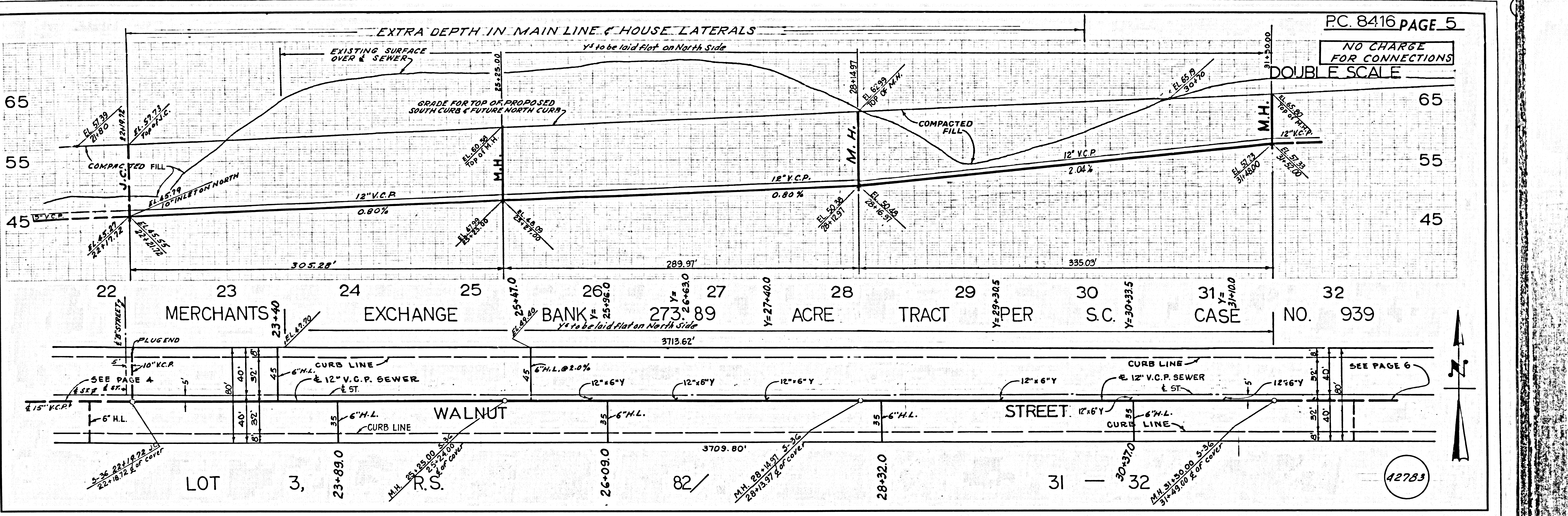
M.B. 690/44-48



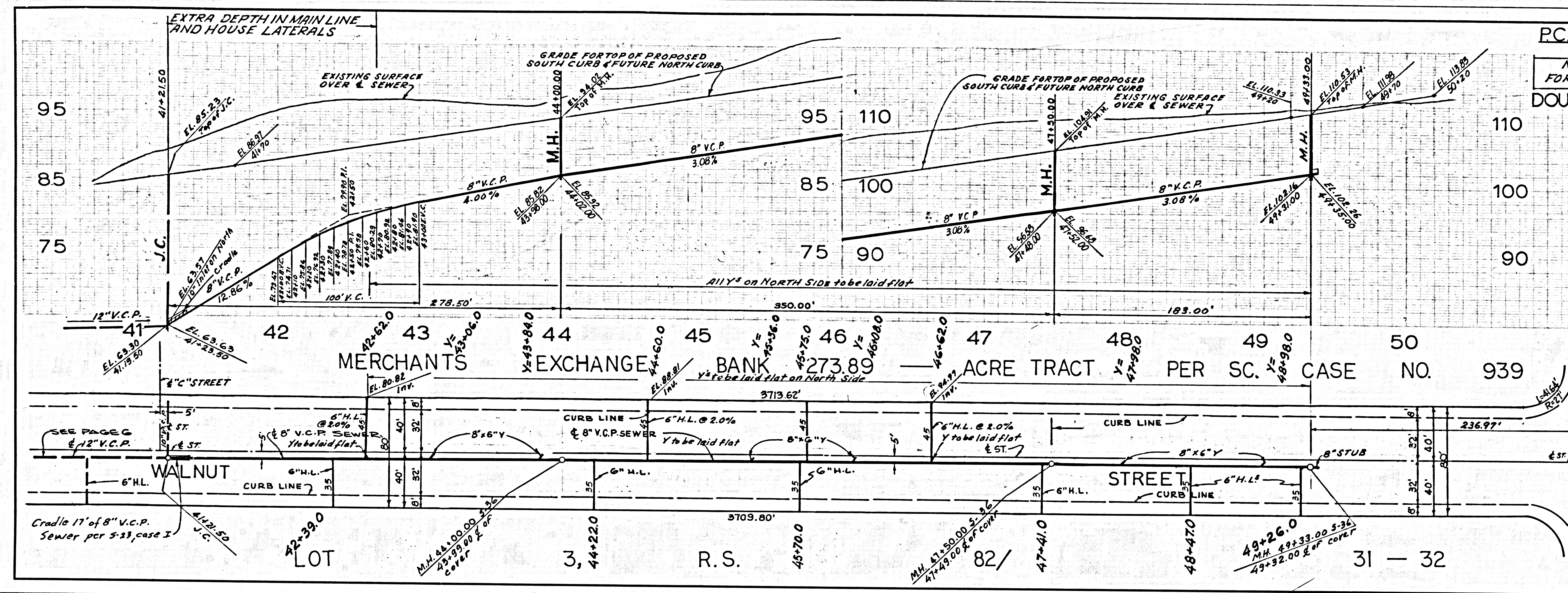
PC. 8416 PAGE 3  
 NO CHARGE FOR CONNECTIONS  
 DOUBLE SCALE



PC. 8416 PAGE 4  
 NO CHARGE FOR CONNECTIONS  
 DOUBLE SCALE



NO CHARGE FOR CONNECTIONS  
DOUBLE SCALE



42 785



PAGE