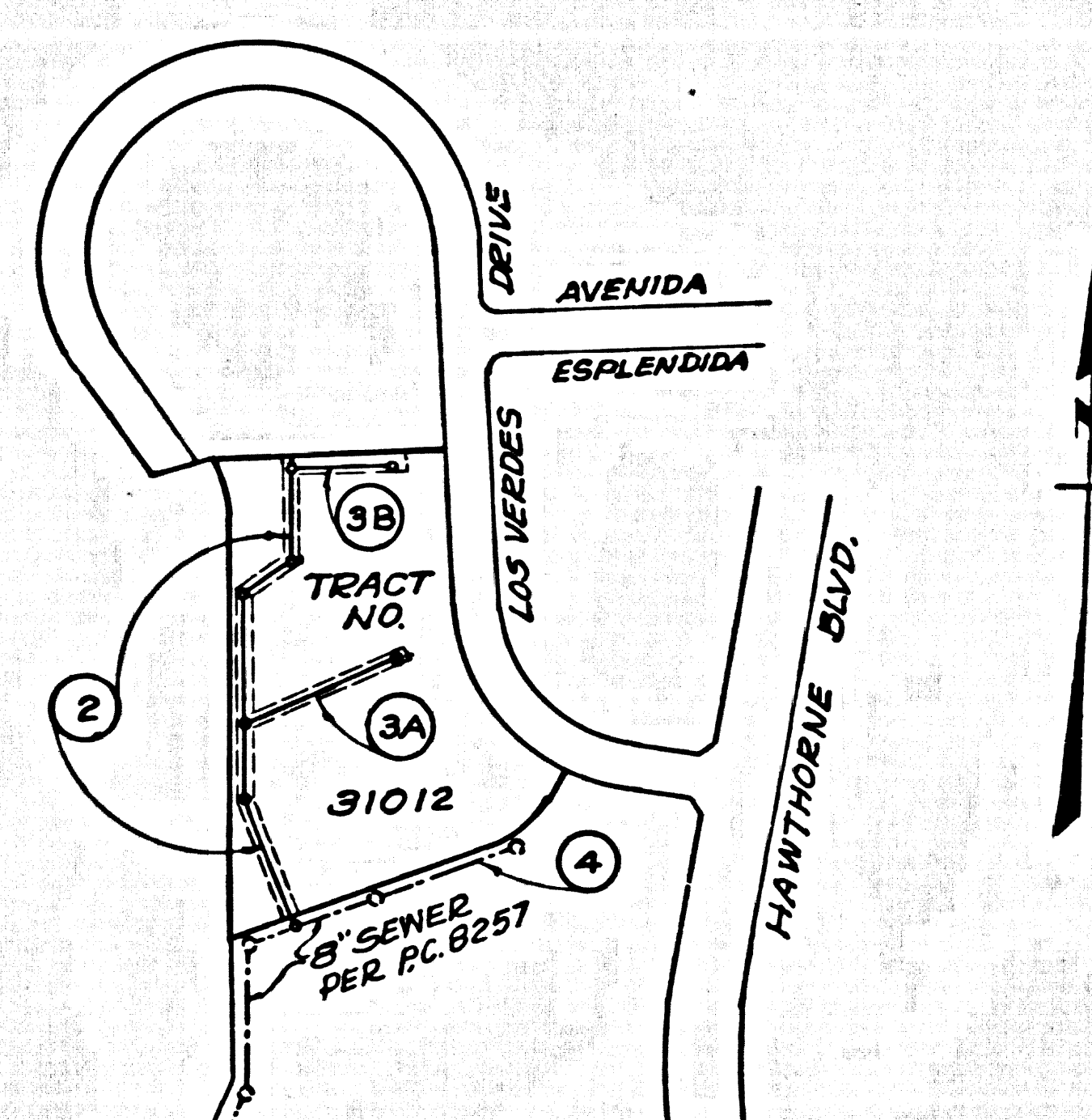


B.M. BY 6036 ELEV. 848.663
 1' & 8" East Curb 1' & 3" South of B.R.C. @ SE
 Cor. Hawthorne Blvd. & Phoenix Dr.
 65' ± N. & 40' ± E. of E. Intersection
 Palos Verdes QUAD. 1965



INDEX MAP
 SCALES: 1"=300'
 TRACT NO. 31012
 NOS. IN CIRCLES INDICATES PAGE NOS.

It is hereby certified that the disposal of
 the sewage from the buildings shown on
 this plan is in accordance with the
 provisions of the Health Ordinance of the
 City of Los Angeles and the Health
 Ordinance of the County of Los Angeles.

County Sanitation Districts shall be
 notified prior to the following so
 that required inspection can be made
 (Phone 466-3088 - 656-2097)

Acceptance of the project.

COLLECT CHARGES
 AS INDICATED

DOUBLE SCALE
 LOMITA BLDG. DIST. NO. 12

PROFILE, ALIGNMENT AND GRADE OF
 SANITARY SEWERS P.C. 8417
 TO BE CONSTRUCTED IN PAGE 1

TRACT NO. 31012
 PRIVATE CONTRACT NO. 8417

W.S. 27
 2 SHEETS; 4 PAGES
 SCALE: VERT. 1"=8' NOV. 1969
 HORIZ. 1"=40'
 PREPARED IN THE OFFICES OF
 PSOMAS AND YOUNG
 By: Timothy Poomes
 REG. C. E. NO. 17643

- NOTES:
- HOUSE LATERALS TO BE CONSTRUCTED WITH INVERTS AT PROPERTY LINE 4 FEET BELOW SURFACE OVER SEWER.
 - PROVIDE STAKES ON THE PROPERTY LINE OR PROPERTY LINES PRODUCED AT RIGHT ANGLES TO THE SEWER LINE AT THE CENTER LINE OF EACH MANHOLE.
 - NO REPRESENTATIVE OF THE COUNTY ENGINEER WILL SURVEY OR LAY OUT ANY PORTION OF THE WORK.
 - THE PRIVATE ENGINEER SHALL FURNISH THE COUNTY ENGINEER WITH GRADE SHEETS AND STATIONING FOR ALL HOUSE LATERALS AND "T" OR "T" BRANCHES AND SHALL PROVIDE STAKES FOR THEM AT THESE PROBE LOCATIONS WITH STATIONING PLAINLY MARKED. ALL HOUSE LATERALS SHALL BE CONSTRUCTED IN A STRAIGHT ALIGNMENT AT RIGHT ANGLES FROM THE MAIN LINE SEWER EXCEPT AS SHOWN ON THE PLANS. HOUSE LATERALS FROM CHIMNEYS SHALL NOT HAVE AN ANGLE OF LESS THAN 45° WITH THE MAIN LINE SEWER. ANY CHANGE IN ALIGNMENT SHALL BE REQUESTED IN WRITING BY THE PRIVATE ENGINEER.
 - THE PRIVATE ENGINEER SHALL FURNISH THE HOUSE LATERAL DEPTH AT THE PROPERTY LINE BELOW THE TOP OF CURB ELEVATION FOR EACH HOUSE LATERAL ON THE GRADE SHEET.
 - NO REVISIONS SHALL BE MADE IN THESE PLANS WITHOUT THE APPROVAL OF THE COUNTY ENGINEER.
 - THE CONTRACTOR SHALL NOTIFY THE CONSTRUCTION DIVISION BY TELEPHONE, MARSHEN 9-0747, EXT. 8158, AT LEAST TWENTY-FOUR HOURS BEFORE STARTING ANY WORK UNDER THIS CONTRACT.
 - ALL STRUCTURES SHALL BE EITHER BRICK MANHOLES PER 8-1 ON PRECAST CONCRETE MANHOLES PER 8-4 OR 8-4, EXCEPT AS NOTED.
 - "T" OR "T" BRANCHES MAY BE USED FOR CONNECTIONS TO MAINLINE SEWERS EXCEPT AS NOTED.
 - MANHOLE TOPS IN UNIMPROVED AREAS OF WAYS TO BE SIX INCHES ABOVE FINISHED GRADE.
 - USE EXTRA STRENGTH PIPE, ALL PIPE IS STANDARD DEPTH EXCEPT AS NOTED.
 - VITRIFIED CLAY PIPE JOINTS SHALL BE TYPE "B", "C", OR "D" PER STANDARD SPECIFICATIONS SECTION 308-2.
 - IF A POWER POLE IS WITHIN THREE FEET OF THE SEWER, THE SEWER SHALL BE ENCASED, PER 8-23, TWO FEET ON EACH SIDE FROM THE POINT OF INTERFERENCE.
 - IF DURING THE COURSE OF CONSTRUCTION IT IS DETERMINED THAT THERE IS LESS THAN FOUR FEET OF COVER OVER THE TOP OF A MAIN LINE OR HOUSE LATERAL V.C.P. SEWER WHICH IS NOT INDICATED ON THE PLANS, THE PIPE SHALL BE ENCASED PER 8-23, UNLESS OTHERWISE APPROVED BY THE COUNTY ENGINEER.
 - RESURFACE ALL TRENCHES WITHIN PAVED AREAS TO MEET L.A. COUNTY ROAD DEPT. OR CALIFORNIA STATE HIGHWAY REQUIREMENTS IN ACCORDANCE WITH PERMITS.
 - SEWERS TO BE TESTED FOR LEAKAGE PER SECTION 304-2.7 OF THE STANDARD SPECIFICATIONS.
 - SEWERS TO SECTION 304.1 OF THE STANDARD SPECIFICATIONS, REGARDING SEWER ODDS.
 - ALL JOINTS BETWEEN CAST IRON PIPE AND VITRIFIED CLAY PIPE SHALL BE MADE WITH A RUBBER SLEEVE JOINT, TYPE "C" OR "D", WITH GUSHING IF NECESSARY PER STANDARD SPECIFICATIONS, SECTION 308-2.

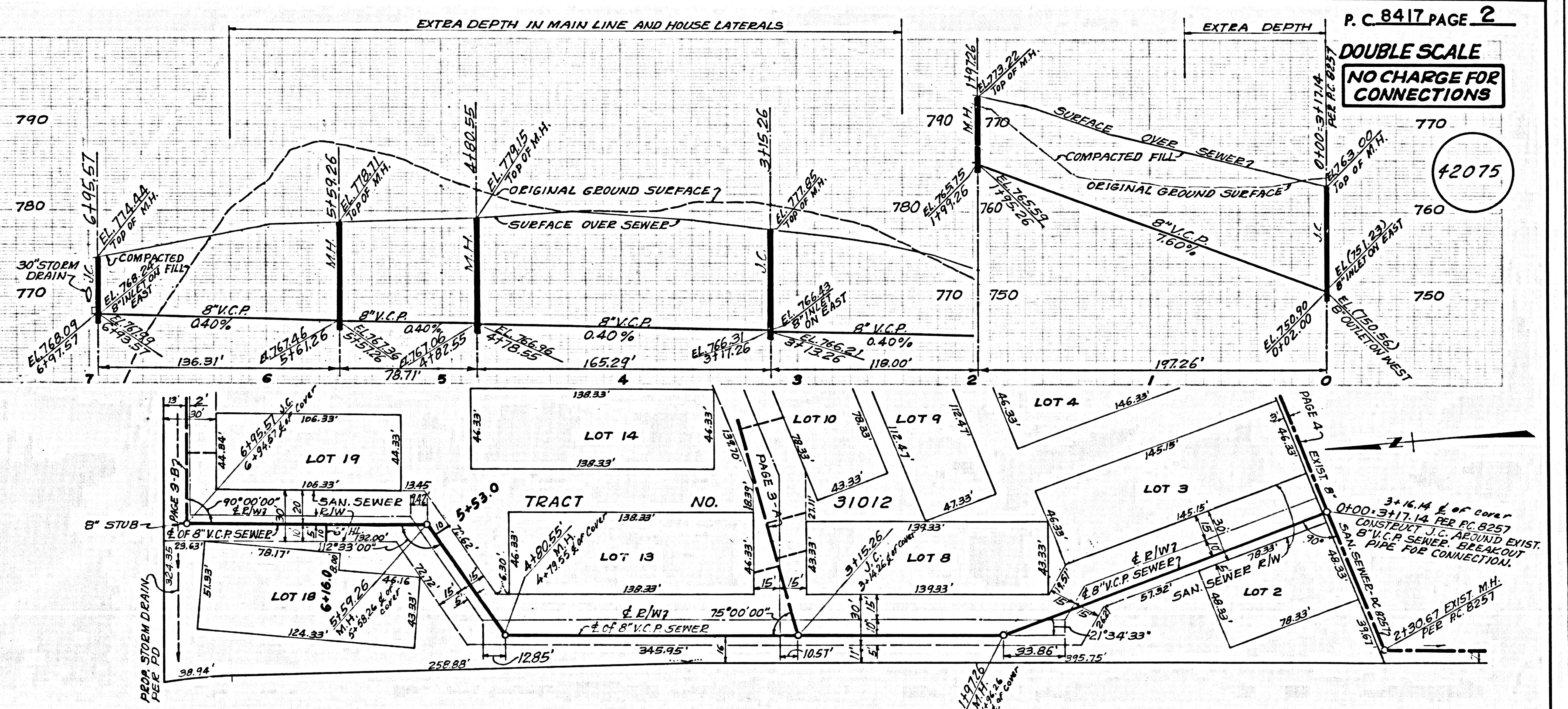
THE FOLLOWING LATEST REVISED STANDARD PLANS ON FILE IN THE OFFICE OF THE COUNTY ENGINEER SHALL APPLY IN THE CONSTRUCTION OF THIS PROJECT.

MINIMUM PUBLIC SAFETY REQUIREMENTS	8-1
BRICK MANHOLE	8-2
NON-REINFORCED PRECAST CONCRETE MANHOLE	8-3
REINFORCED PRECAST CONCRETE MANHOLE	8-4
MANHOLE FRAME AND COVER	8-18
STANDARD MANHOLE SET	8-17
BEDDING FOR SEWER PIPE	8-27
CRADLING AND ENCASEMENT	8-28
WYS OR THE SUPPORT	8-26
ALLOWABLE TRENCH WIDTHS	8-23

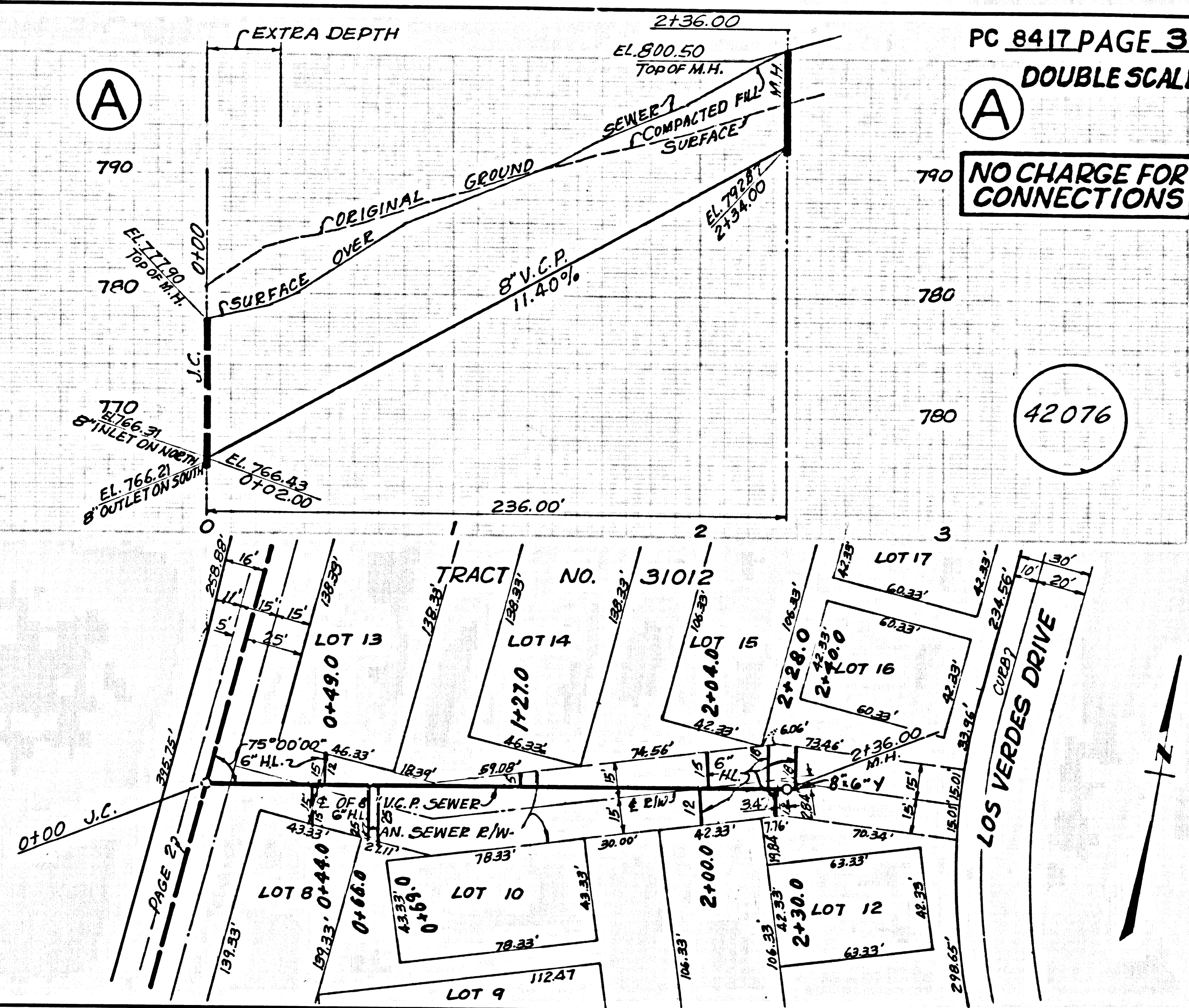
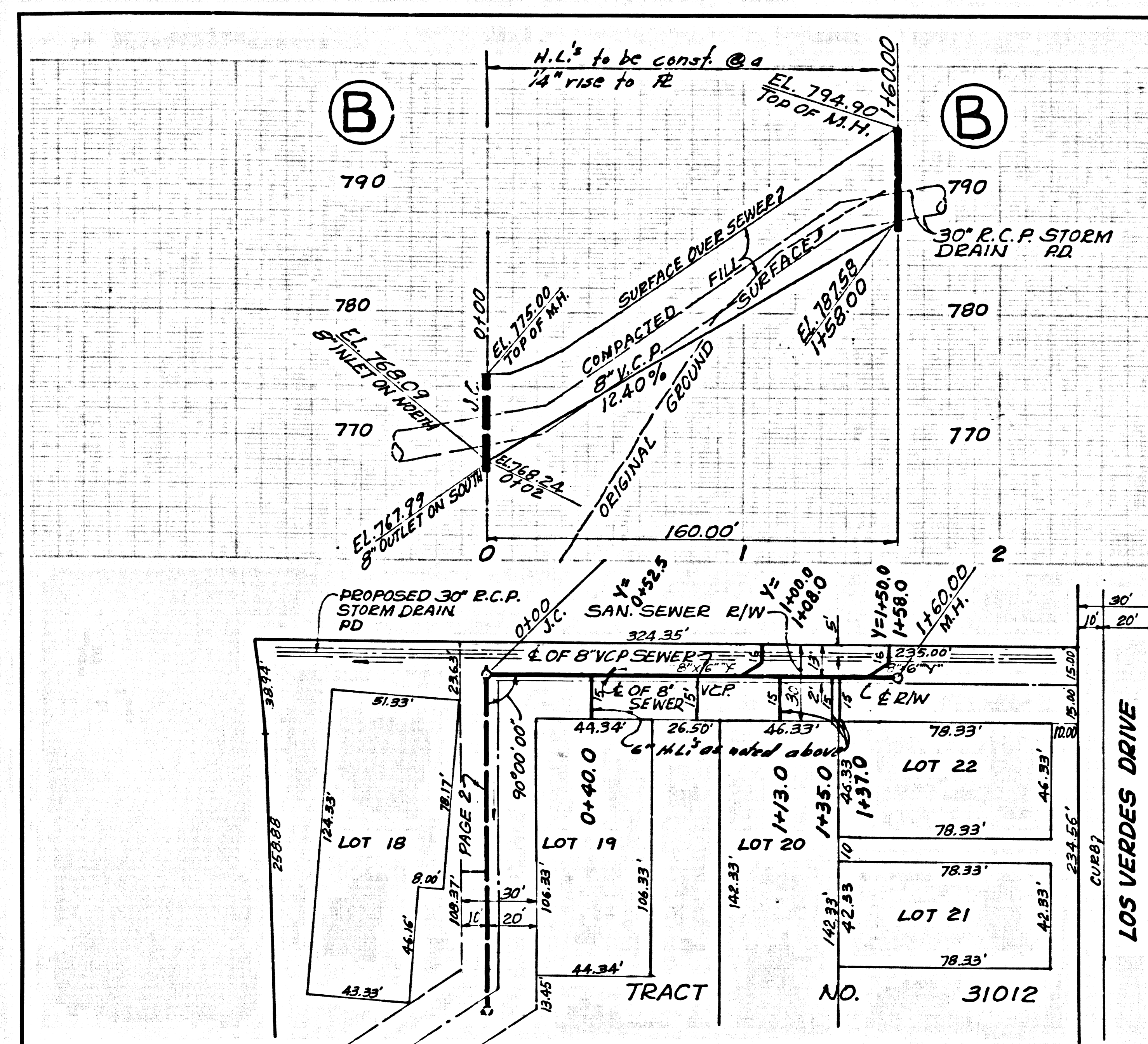
REVISION DATE 10/9/70
 ADDED 2 HOUSE LATERALS PAGE 2B
 APPROVED: *Bernard A. Valdey* DATE

NOTE:
 GRADES TO WHICH THIS IMPROVEMENT IS TO BE CONSTRUCTED ARE SHOWN ON PLANS AND PROFILE. GRADE POINTS FOR TOP OF CURBS, CENTER LINE OF STREETS, OR CENTER LINE OF ALLEYS ARE SHOWN BY CIRCLES ON PROFILES. AT ALL POINTS BETWEEN DESIGNATED POINTS THE GRADE SHALL BE ESTABLISHED SO AS TO CONFORM TO A STRAIGHT LINE DRAWN BETWEEN SAID DESIGNATED POINTS. ELEVATIONS ARE IN FEET ABOVE U.S.C. & G.S. SEA LEVEL DATUM OF 1929.
 WORK SHALL BE CONSTRUCTED ACCORDING TO THE STANDARD SPECIFICATIONS FOR PUBLIC WORKS CONSTRUCTION AND SPECIAL PROVISIONS FOR THE CONSTRUCTION OF SANITARY SEWERS DATED JULY 2, 1969 AS REVISED, AND SHALL BE PROSECUTED ONLY IN THE PRESENCE OF THE COUNTY ENGINEER.
 BEFORE WORK CAN BE STARTED, THE CONTRACTOR MUST OBTAIN A PERMIT TO EXCAVATE IN COUNTY STREETS FROM THE L.A. COUNTY ROAD DEPT., DISTRICT OFFICE NO. 3, AND PAY A FEE TO THE COUNTY ENGINEER, ROOM 326, COUNTY ENGINEERING BUILDING, 100 WEST SECOND STREET OR PALOS VERDES, CALIFORNIA. THE REGIONAL OFFICE, SUPERVISOR TO COVER THE COST OF CONSTRUCTION INSPECTION AND RECORD PLANS.
 APPROVAL OF THIS PLAN BY THE COUNTY OF LOS ANGELES DOES NOT CONSTITUTE A REPRESENTATION AS TO THE ACCURACY OF THE LOCATION OF OR THE EXISTENCE OR NON-EXISTENCE OF ANY UNDERGROUND UTILITY PIPE, OR STRUCTURE WITHIN THE LIMITS OF THE PROJECT. THIS NOTE APPLIES TO ALL PAGES.
 IF WORK IS TO BE DONE IN A STATE HIGHWAY, A PERMIT MUST BE OBTAINED FROM THE STATE OF CALIFORNIA, DIVISION OF HIGHWAYS, 130 SOUTH SPRING STREET, LOS ANGELES, CALIFORNIA.

COUNTY OF LOS ANGELES, CALIFORNIA
 JOHN A. LAMBIE, COUNTY ENGINEER J. D. PARKHURST, CHIEF ENGINEER
 APPROVED BY: *Robert Williams* 2-13-70 APPROVED BY: *John Parkhurst*
 REGIONAL ENGINEER DATE OFFICE ENGINEER
 CHECKED BY: *Bernard A. Valdey* 2/13/70
 REG. C.E. NO. 10653



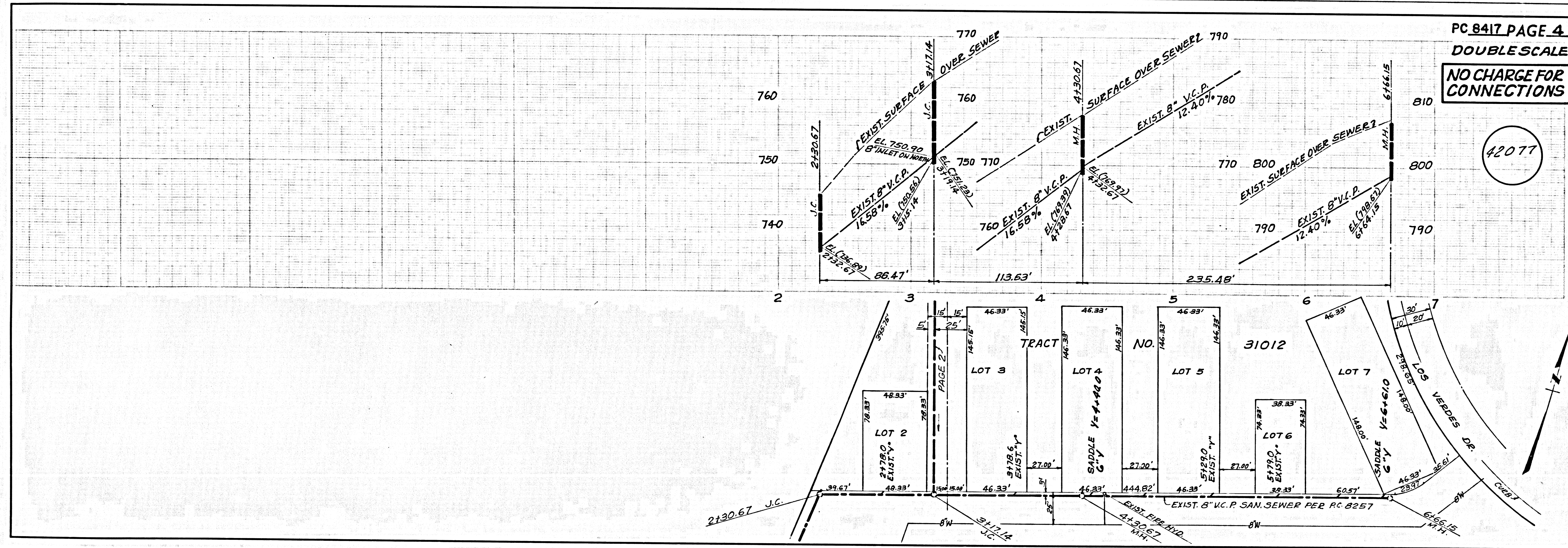
P. C. 8417 PAGE 2
 DOUBLE SCALE
 NO CHARGE FOR CONNECTIONS
 \$2075



PC 8417 PAGE 3
DOUBLE SCALE

NO CHARGE FOR CONNECTIONS

42076



PC 8417 PAGE 4
DOUBLE SCALE

NO CHARGE FOR CONNECTIONS

42077