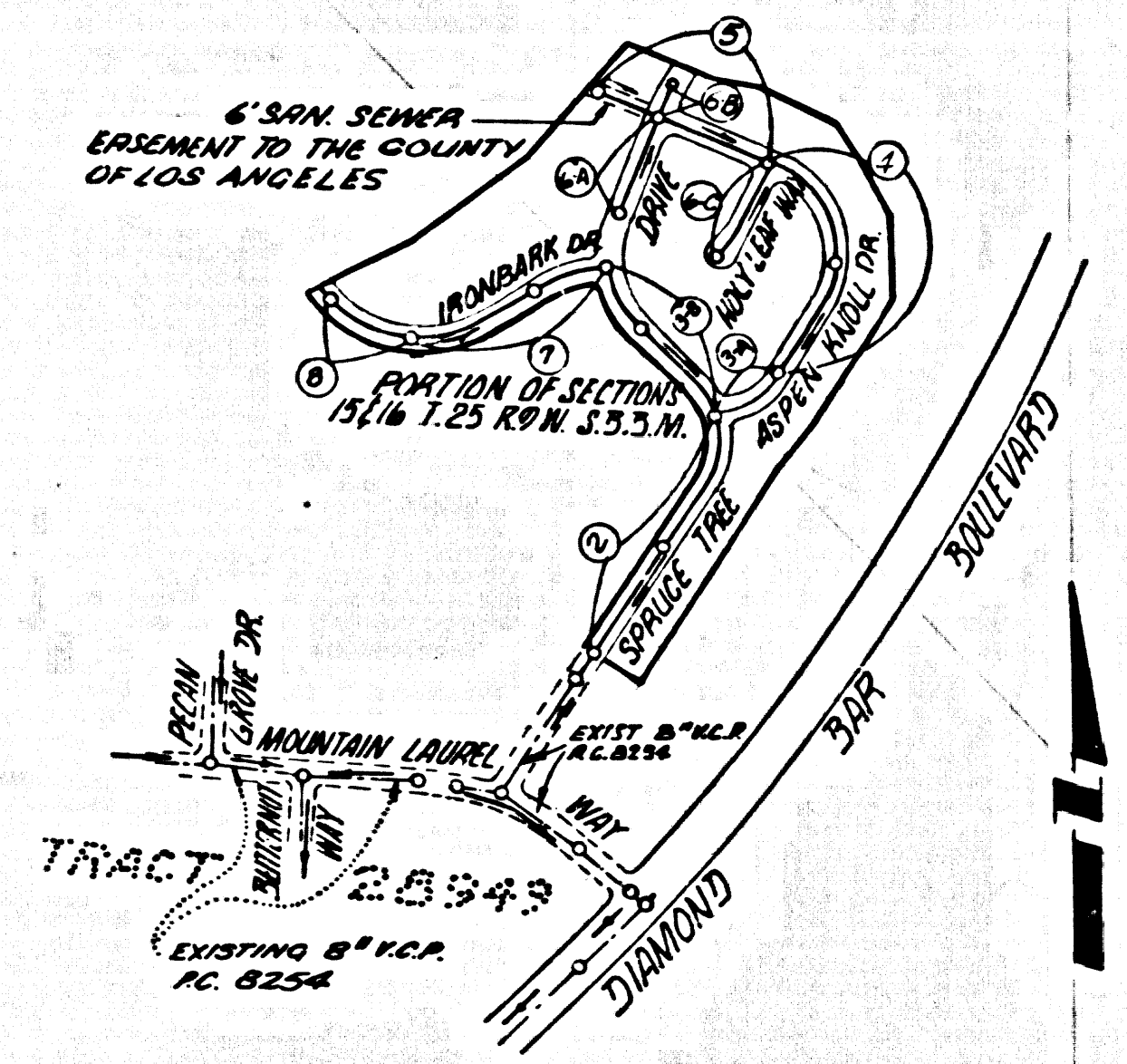


B.M. B.C. 2109 ELEV. 843.521
 BEGINNING AT DATHUNDER RD. & DIAMOND
 BAR BLVD. THENCE 1 MILE N.Y. ALONG
 DIAMOND BAR BLVD TO CONCRETE HEADWALL
 R.D.M. TAG NEAR CENTER 65' ELY OF E.
 OTTERBEIN QUAD. 19 65



INDEX MAP
 TRACT NO 29640
 P.C. 8418
 SCALE: 1"=600'

NOTE: NUMBERS IN CIRCLES INDICATE PAGE NUMBERS.

PRIVATE ENGINEER'S
 NOTICE TO CONTRACTOR
 THE EXISTENCE AND LOCATION OF ANY UNDERGROUND UTILITY PIPES
 OR STRUCTURES SHOWN ON THESE PLANS ARE OBTAINED BY A SEARCH
 OF THE AVAILABLE RECORDS TO THE BEST OF OUR KNOWLEDGE THERE
 ARE NO EXISTING UTILITIES EXCEPT AS SHOWN ON THIS MAP.
 THE CONTRACTOR IS REQUIRED TO TAKE PRECAUTIONARY MEASURES
 TO PROTECT THE UTILITY LINES SHOWN AND ANY OTHER LINES NOT
 OF RECORD OR NOT SHOWN ON THIS DRAWING.

REVISION No. 1 AUG. 11, 1971
 REVISED HORIZONTAL AND VERTICAL ALIGNMENT OF
 SEWER LINE AND M.H. LOCATION BETWEEN STATIONS
 15+80.00 TO 14+01.67 PAGE 5.
 APPROVED *Thomas E. Howard* 11/11/71
 OFFICE OF COUNTY ENGINEER (R.E. No. 19156)

COLLECT CHARGES
 AS INDICATED

DOUBLE SCALE
 SAN DIMAS BLDG. DIST. NO. 10

PROFILE, ALIGNMENT AND GRADE OF
 SANITARY SEWERS P.C. 8418
 CONSTRUCTED IN PAGE 1

TRACT NO 29640

PRIVATE CONTRACT NO. 8418

W.S. 39 - C.3

4 SHEETS; 8 PAGES

SCALE: VERT. 1"=4' HORIZ. 1"=40' MARCH, 1971

PREPARED IN THE OFFICES OF

ERVIN ENGINEERING

729 SO. PARK VIEW ST. LOS ANGELES, CALIF.

By: *Fred P. Ervin*
 REG. C. E. NO. 11932

- NOTE:
- HOUSE LATERALS TO BE CONSTRUCTED WITH INVERTS AT PROPERTY LINE & FEET BELOW CURB GRADE EXCEPT AS NOTED.
 - PROVIDE STAKES ON THE PROPERTY LINE OR PROPERTY LINES PRODUCED AT RIGHT ANGLES TO THE SEWER LINE AT THE CENTER LINE OF EACH MANHOLE.
 - NO REPRESENTATIVE OF THE COUNTY ENGINEER WILL SURVEY OR LAY OUT ANY PORTION OF THE WORK.
 - THE PRIVATE ENGINEER SHALL FURNISH THE COUNTY ENGINEER WITH GRADE SHEETS AND STATIONING FOR ALL HOUSE LATERALS AND "T" OR "T" BRANCHES AND SHALL PROVIDE STAKES FOR THEM AT THEIR PROPER LOCATIONS WITH STATIONING NEARBY MARKED. ALL HOUSE LATERALS SHALL BE CONSTRUCTED IN A STRAIGHT ALIGNMENT AT RIGHT ANGLES FROM THE MAIN LINE SEWER EXCEPT AS SHOWN ON THE PLANS. HOUSE LATERALS FROM CHIMNEYS SHALL NOT HAVE AN ANGLE OF LESS THAN 45° WITH THE MAIN LINE SEWER. ANY CHANGE IN ALIGNMENT SHALL BE REQUESTED IN WRITING BY THE PRIVATE ENGINEER.
 - THE PRIVATE ENGINEER SHALL FURNISH THE HOUSE LATERAL DEPTH AT THE PROPERTY LINE BELOW THE TOP OF CURB ELEVATION FOR EACH HOUSE LATERAL ON THE GRADE SHEET.
 - NO REVISIONS SHALL BE MADE IN THESE PLANS WITHOUT THE APPROVAL OF THE COUNTY ENGINEER.
 - THE CONTRACTOR SHALL NOTIFY THE CONSTRUCTION DIVISION BY TELEPHONE, MADISON 8-2427, EXT. 8151, AT LEAST TWENTY-FOUR HOURS BEFORE STARTING ANY WORK UNDER THIS CONTRACT.
 - ALL STRUCTURES SHALL BE EITHER BRICK MANHOLES PER S-3 OR PRECAST CONCRETE MANHOLES PER S-28 EXCEPT AS NOTED.
 - "T" OR "T" BRANCHES MAY BE USED FOR CONNECTIONS TO MAINLINE SEWERS EXCEPT AS NOTED.
 - MANHOLE TOPS IN UNIMPROVED RIGHTS OF WAY TO BE 8 1/2 INCHES ABOVE FINISHED GRADE.
 - USE EXTRA STRENGTH PIPE. ALL PIPE IS STANDARD DEPTH EXCEPT AS NOTED.
 - VITRIFIED CLAY PIPE JOINTS SHALL BE TYPE "D", "T", OR "G" PER STANDARD SPECIFICATIONS SECTION 206.2.
 - IF A POWER POLE IS WITHIN THREE FEET OF THE SEWER, THE SEWER SHALL BE ENCASED, PER S-23 TWO FEET ON EACH SIDE FROM THE POINT OF INTERFERENCE.
 - IF DURING THE COURSE OF CONSTRUCTION IT IS DETERMINED THAT THERE IS LESS THAN FOUR PER CENT COVER OVER THE TOP OF A MAIN LINE OR HOUSE LATERAL V.C.P. SEWER WHICH IS NOT INDICATED ON THE PLANS, THE PIPE SHALL BE ENCASED PER S-23, CASE II UNLESS OTHERWISE APPROVED BY THE COUNTY ENGINEER.
 - RESURFACE ALL TRENCHES WITHIN PAVED AREAS TO MEET L.A. COUNTY ROAD DEPT. OR CALIFORNIA STATE HIGHWAY REQUIREMENTS IN ACCORDANCE WITH PERMITS.
 - SEWERS TO BE TESTED FOR LEAKAGE PER SECTION 206.5.3 OF THE STANDARD SPECIFICATIONS AND SPECIAL PROVISIONS.
 - REFER TO SECTION 218.1.1 OF THE STANDARD SPECIFICATIONS, REGARDING SAFETY CORDS.
 - ALL JOINTS BETWEEN CAST IRON PIPE AND VITRIFIED CLAY PIPE SHALL BE MADE WITH A RUBBER SLEEVE JOINT, TYPE "C" OR "T", (WITH BUSHING IF NECESSARY) PER STANDARD SPECIFICATIONS, SECTION 206.2.

THE FOLLOWING LATEST REVISED STANDARD PLANS ON FILE IN THE OFFICE OF THE COUNTY ENGINEER SHALL APPLY IN THE CONSTRUCTION OF THIS PROJECT.

LEGEND S-1
MINIMUM PUBLIC SAFETY REQUIREMENTS S-2
BRICK MANHOLE S-3
NON-BRICKHOLED PRECAST CONCRETE MANHOLE S-38
LOCKING MANHOLE FRAME AND COVER S-39
STANDARD MANHOLE STEP S-17
BEDDING FOR SEWER PIPE S-21
CRADLING AND ENCASMENT S-23
WYE OR THE SUPPORT S-28
ALLOWABLE TRENCH WIDTHS S-33
ANCHOR BUDGINS S-26
GAFFLE BRACKETS S-31

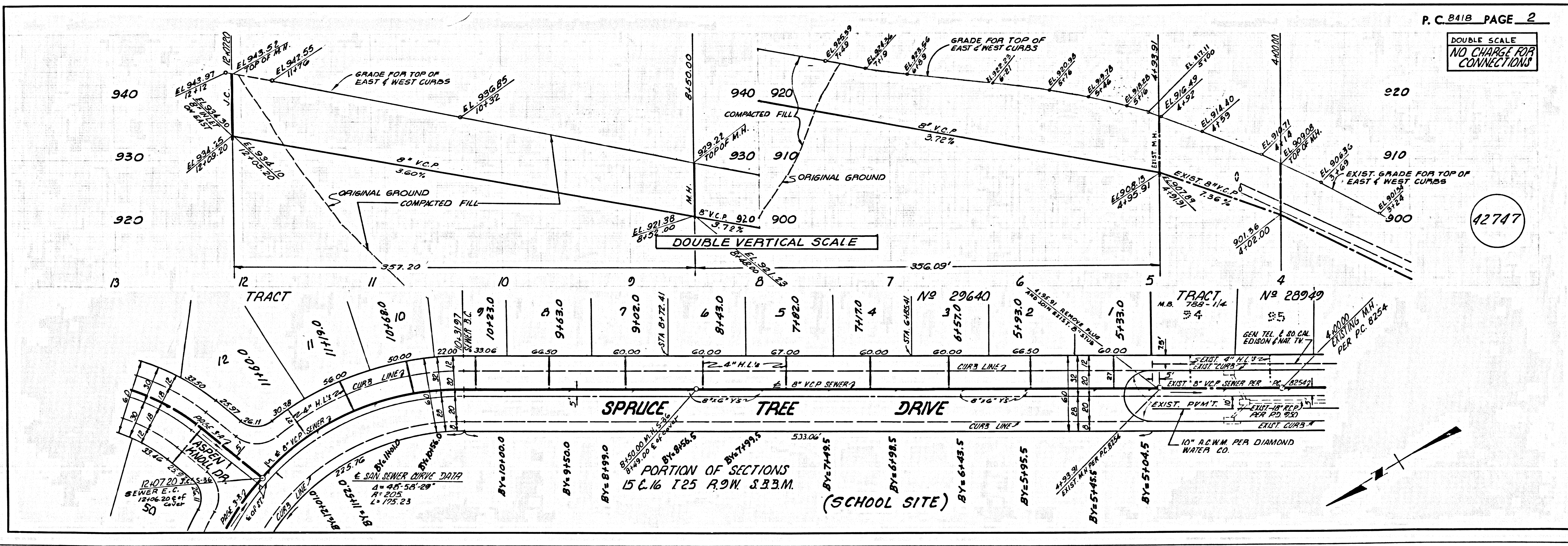
County Sanitation Districts shall be notified prior to the following so that required inspection can be made (Phone 337-1025 - 638-1161)
 Acceptance of the project.

No connections for the disposal of industrial wastes shall be made to sewers shown on these drawings without written permission from the Chief Engineer and General Manager of the County Sanitation Districts.

NOTE:
 GRADES TO WHICH THIS IMPROVEMENT IS TO BE CONSTRUCTED ARE SHOWN ON PLANS AND PROFILES. GRADE POINTS FOR TOP OF CURBS, CENTER LINE OF STREETS, OR CENTER LINE OF ALLEYS ARE SHOWN BY CIRCLES ON PROFILES. AT ALL POINTS BETWEEN DESIGNATED POINTS THE GRADE SHALL BE ESTABLISHED SO AS TO CONFORM TO A STRAIGHT LINE DRAWN BETWEEN SAID DESIGNATED POINTS. ELEVATIONS ARE IN FEET ABOVE U.S.C. & G.S. SEA LEVEL DATUM OF 1929.
 WORK SHALL BE CONSTRUCTED ACCORDING TO THE STANDARD SPECIFICATIONS FOR PUBLIC WORKS CONSTRUCTION (1962 EDITION) AND COUNTY ENGINEER'S SPECIAL PROVISIONS FOR PUBLIC WORKS CONSTRUCTION (APRIL 7, 1970) AND SHALL BE PROSECUTED ONLY IN THE PRESENCE OF THE COUNTY ENGINEER.
 BEFORE WORK CAN BE STARTED, THE CONTRACTOR MUST OBTAIN A PERMIT TO EXCAVATE IN COUNTY STREETS FROM THE L.A. COUNTY ROAD DEPT., DISTRICT OFFICE NO. 4, 11111 AND PAY A FEE TO THE COUNTY ENGINEER, ROOM 79 9150 E. 116th AVE., JOLIET, CALIF. 90712 OR, ROOM 4, ROYALTA AVE. SAN DIMAS, REGIONAL OFFICE, SUFFICIENT TO COVER THE COST OF CONSTRUCTION INSPECTION AND RECORD PLANS.
 APPROVAL OF THE PLAN BY THE COUNTY OF LOS ANGELES DOES NOT CONSTITUTE A REPRESENTATION AS TO THE ACCURACY OF THE LOCATION OF OR THE EXISTENCE OR NON-EXISTENCE OF ANY UNDERGROUND UTILITY PIPE, OR STRUCTURE WITHIN THE LIMITS OF THE PROJECT. THIS NOTE APPLIES TO ALL PAGES.
 IF WORK IS TO BE DONE IN A STATE HIGHWAY, A PERMIT MUST BE OBTAINED FROM THE STATE OF CALIFORNIA, DIVISION OF HIGHWAYS, 120 SOUTH SPRING STREET, LOS ANGELES, CALIFORNIA.

COUNTY OF LOS ANGELES, CALIFORNIA
 JOHN A. LAMBIE, COUNTY ENGINEER J. D. PARKHURST, CHIEF ENGINEER
 CO. SANITATION DISTRICT NO. 10
 APPROVED BY: *B.T. Volking* APPROVED BY: *C.P. ...*
 SAN DIMAS REGIONAL ENGINEER OFFICE ENGINEER
 CHECKED BY: *Thomas E. Howard* DATE: 30 MAR 71
 REG. C.E. NO. 19156

42746

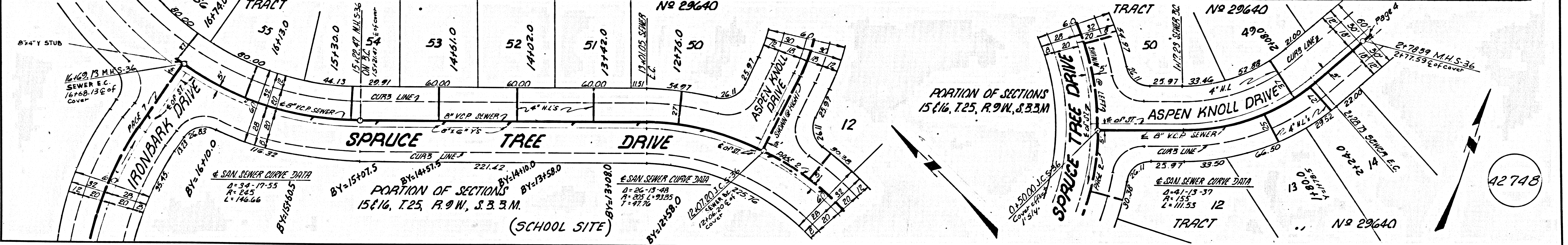
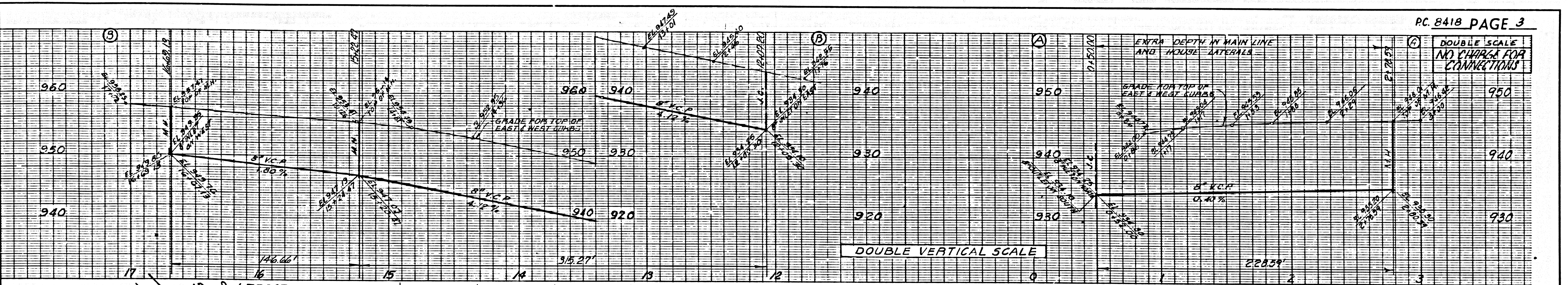


P.C. 8418 PAGE 2

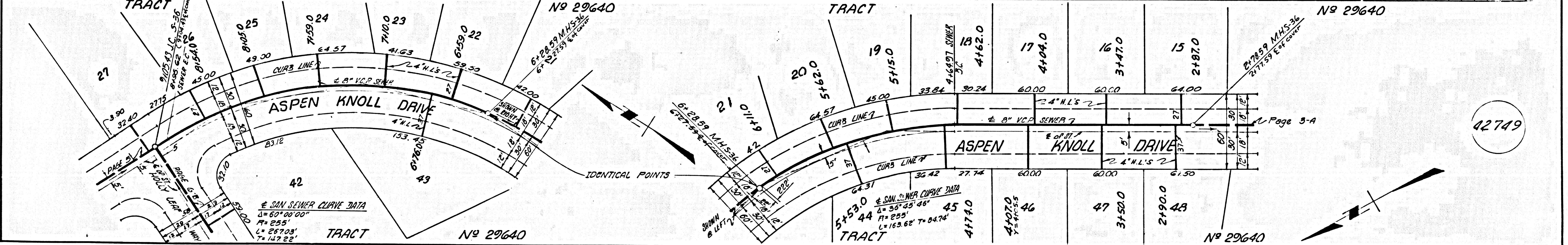
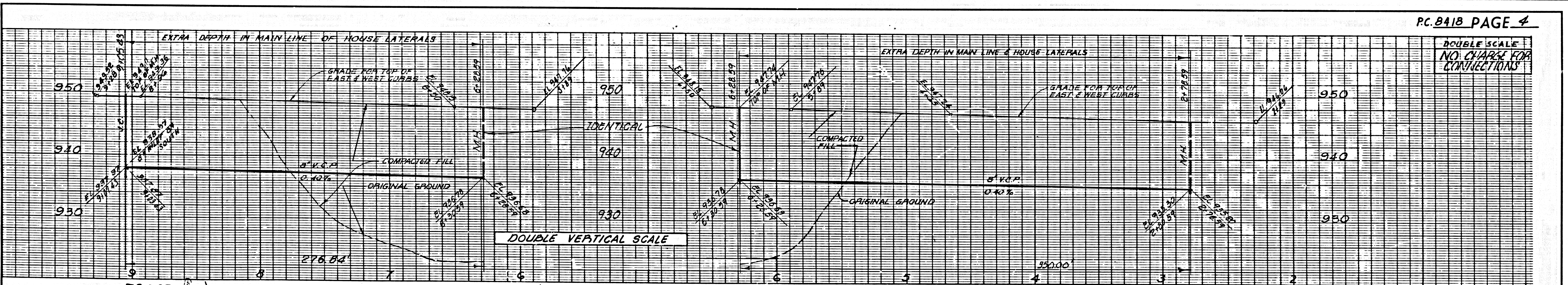
DOUBLE SCALE
 NO CHARGE FOR CONNECTIONS

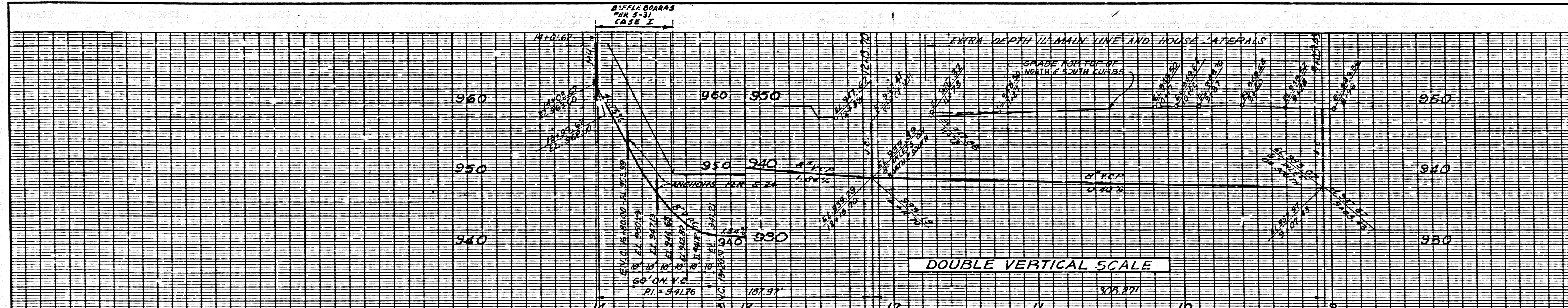
42747

DOUBLE SCALE
NO CHARGE FOR
CONNECTIONS

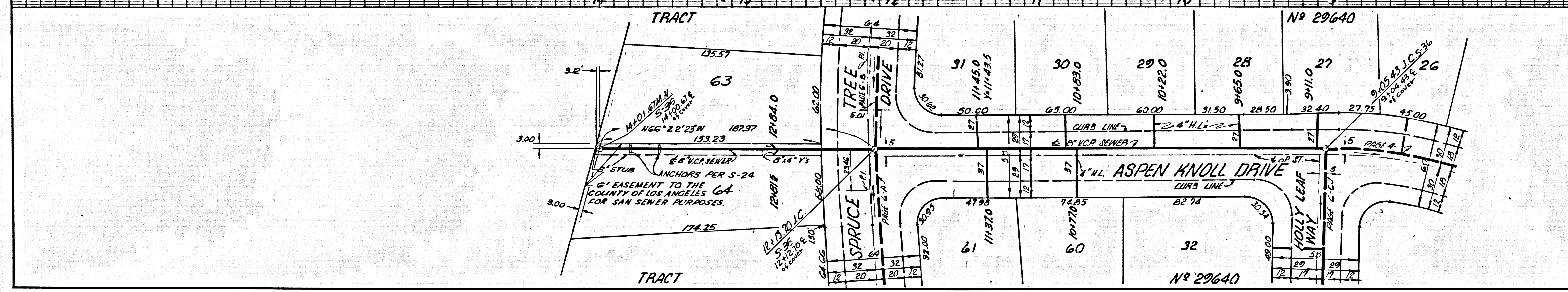


DOUBLE SCALE
NO CHARGE FOR
CONNECTIONS

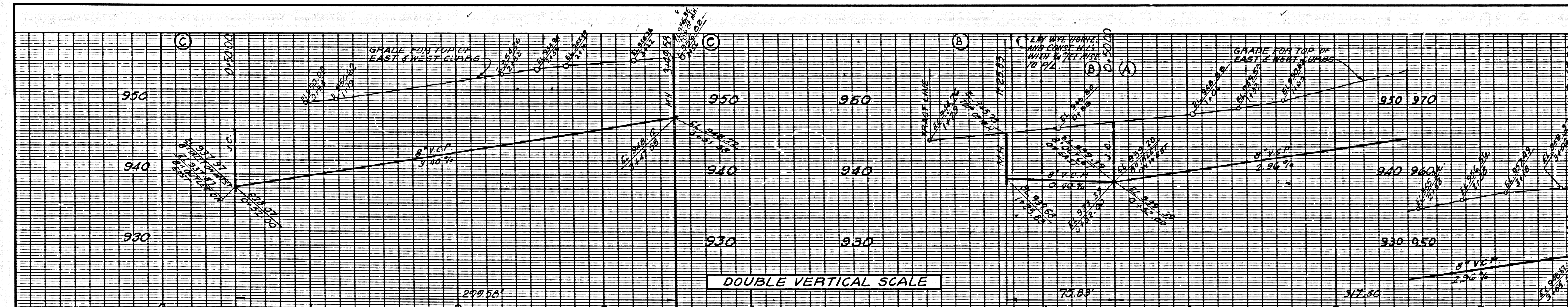




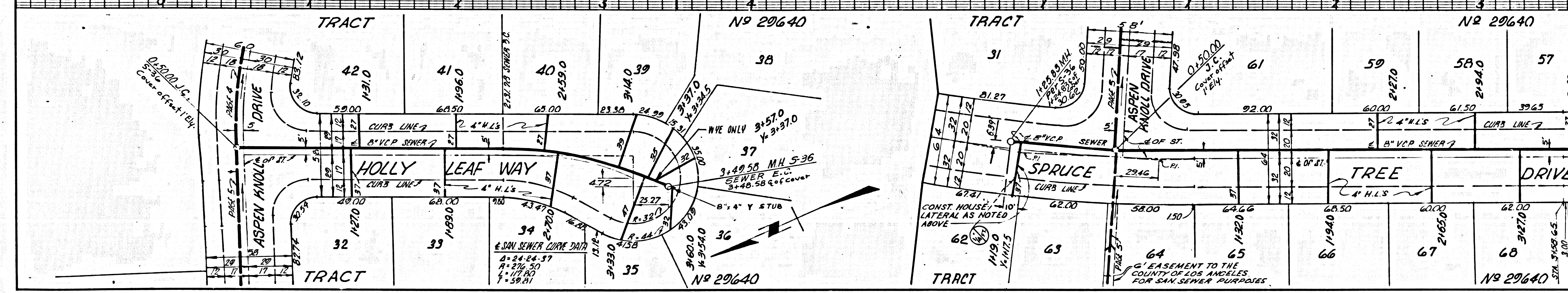
DOUBLE SCALE
NO CHARGE FOR
CONNECTIONS



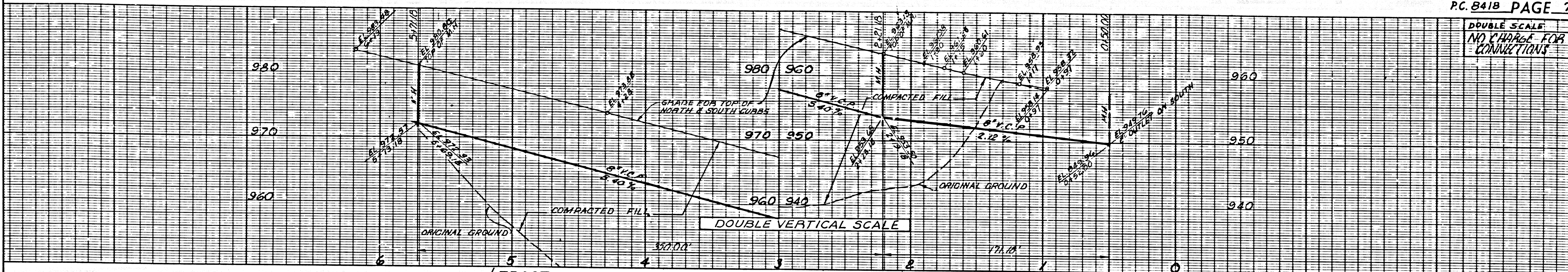
42750



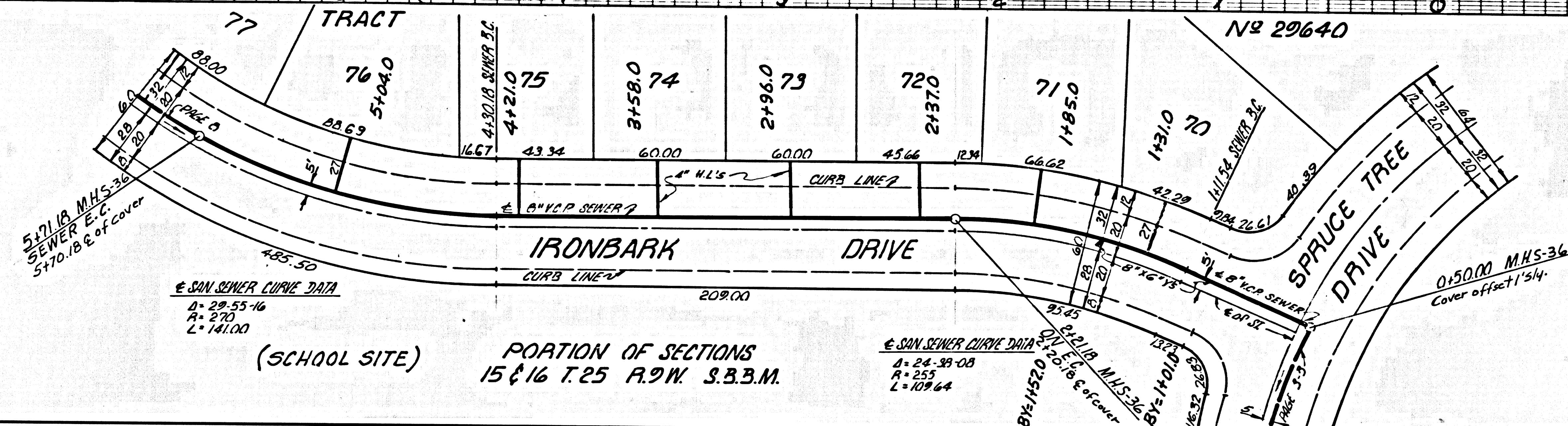
DOUBLE SCALE
NO CHARGE FOR
CONNECTIONS



42751

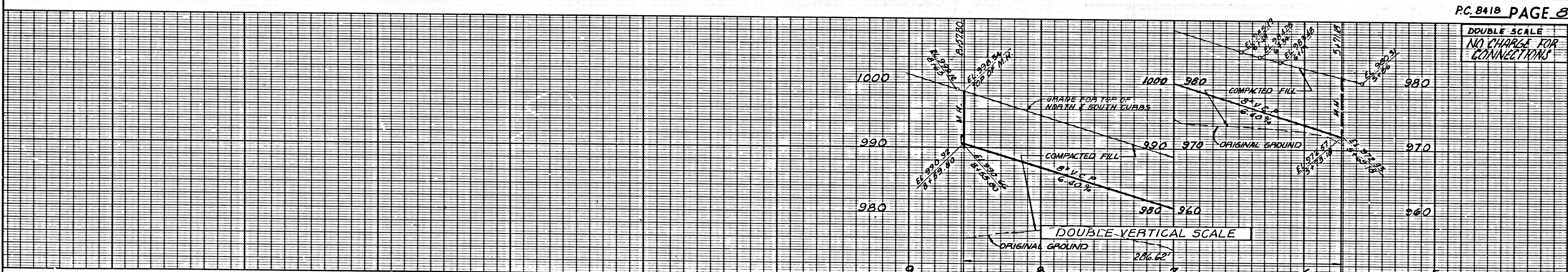


DOUBLE SCALE
NO CHARGE FOR CONNECTIONS

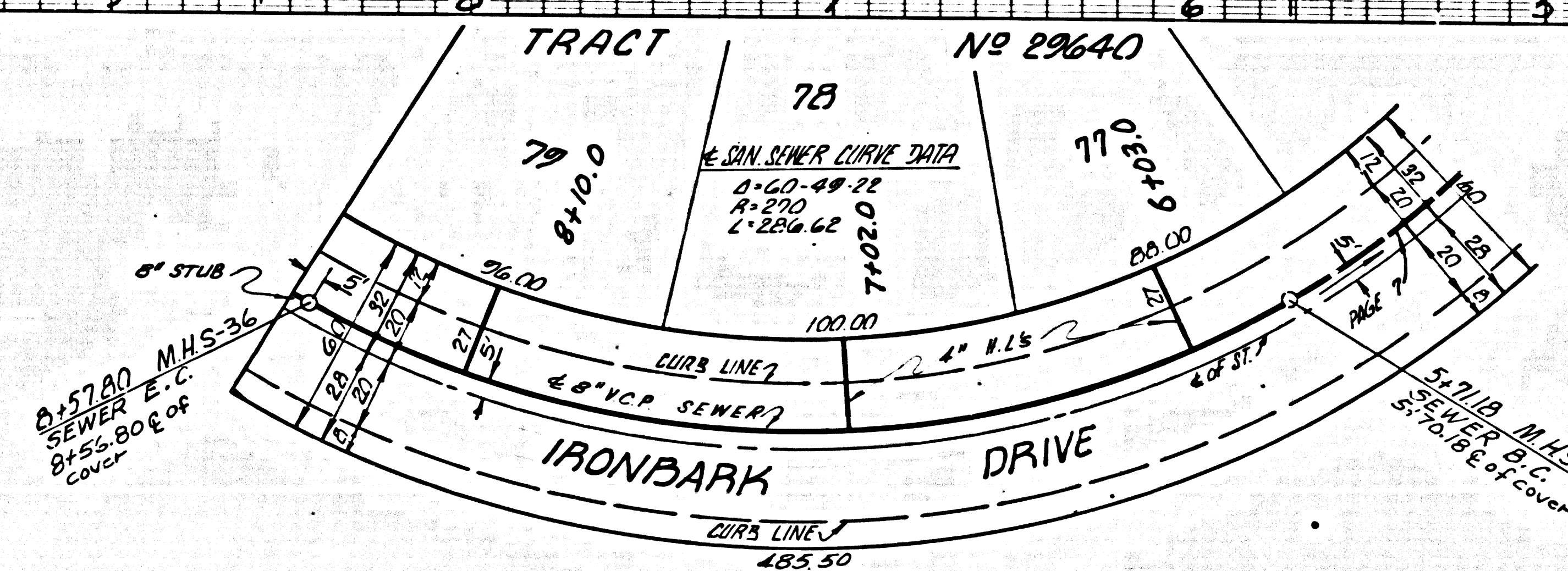


PORTION OF SECTIONS
15 & 16 T.25 R.9W. S.33M.
(SCHOOL SITE)

42752



DOUBLE SCALE
NO CHARGE FOR CONNECTIONS



PORTION OF SECTIONS
15 & 16 T.25 R.9W. S.33M.
(SCHOOL SITE)

42753