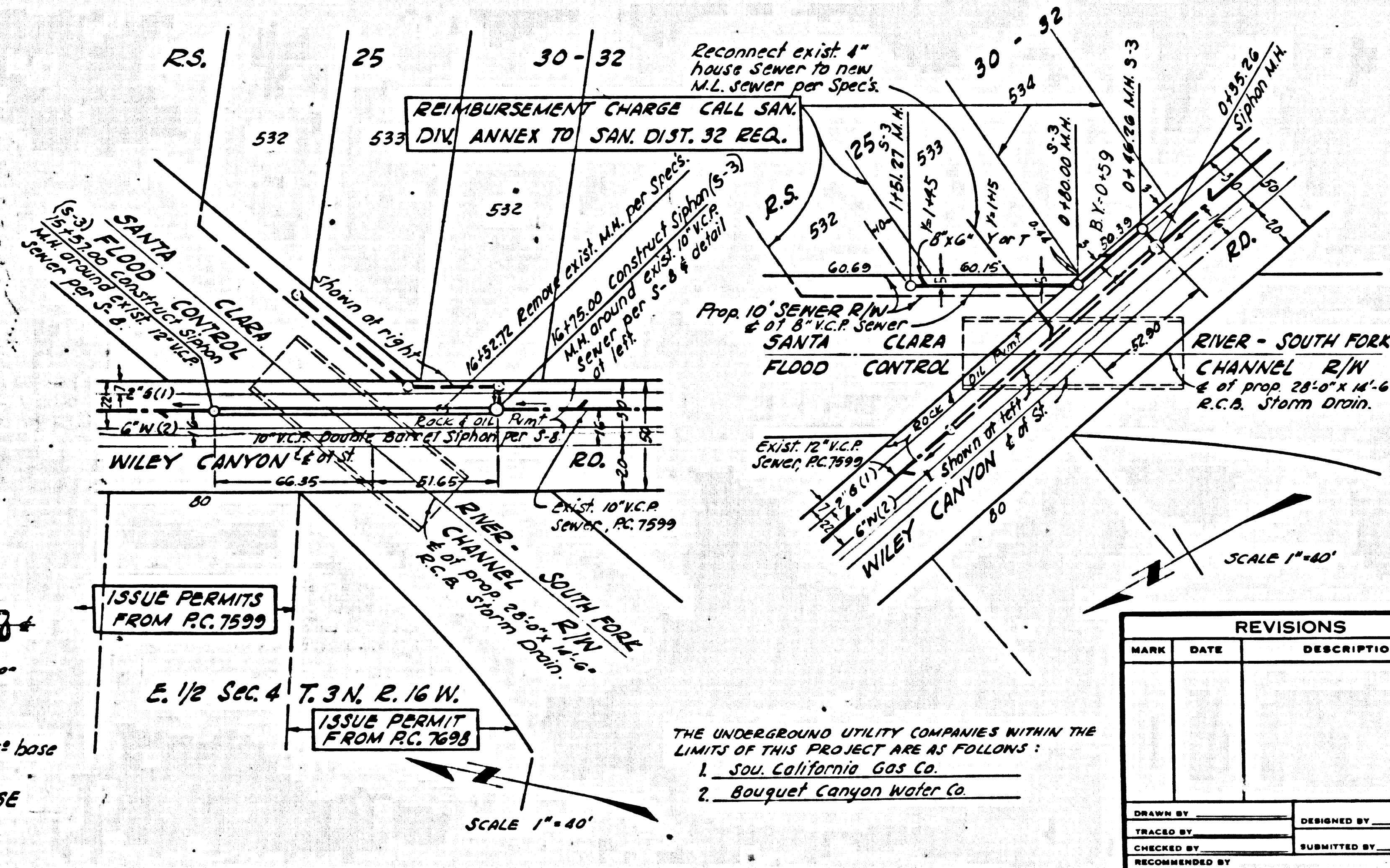
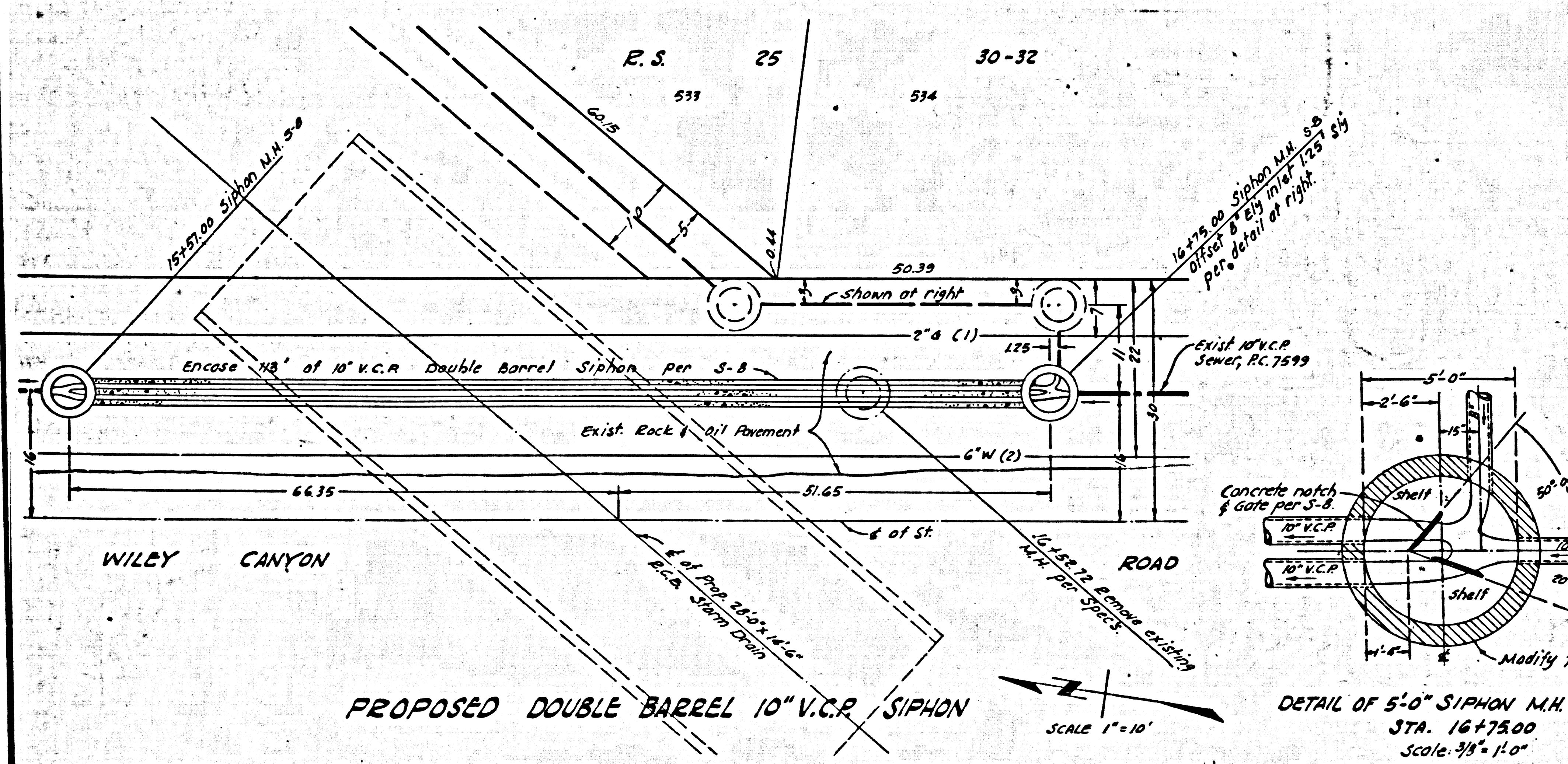


- GENERAL SEWER NOTES**
1. SANITARY SEWERS SHALL BE CONSTRUCTED IN ACCORDANCE WITH THE STANDARD SPECIFICATIONS FOR PUBLIC WORKS CONSTRUCTION (HEREINAFTER REFERRED TO AS THE STANDARD SPECIFICATIONS), SPECIAL PROVISIONS AND STANDARD PLANS ON FILE IN THE OFFICE OF THE COUNTY ENGINEER.
 2. EXISTING SEWER SERVICES AND FLOW SHALL BE MAINTAINED AT ALL TIMES.
 3. AT LEAST 24 HOURS BEFORE STARTING WORK ON THIS PROJECT, THE CONTRACTOR SHALL NOTIFY THE COUNTY ENGINEER - TEL. 629-4743, EXT. 8155A.
 4. REFER TO SEC. 1-10-01 OF THE STANDARD SPECIFICATIONS REGARDING SAFETY DEVICES.
 5. CONSTRUCTION UNDER THIS PROJECT SHALL CONFORM TO THE FOLLOWING STANDARD PERMITS: 1-1, 1-2, 1-3, 1-4, 1-15, 1-17 & 1-33.



County Sanitation Districts shall be notified prior to the following so that required inspection can be made (Section 107-1025 - 108-1001) in advance of the project.

42024

No objections for the disposal of industrial wastes shall be made by sewer above on these drawings without written permission from the Chief Engineer and General Manager of the County Sanitation Districts.

APPROVED
 JOHN D. PARKHURST
 CHIEF ENGINEER
 CO. SAN. DIST. NO. 32

BY: [Signature]
 OFFICE ENGINEER

PREPARED BY
 JOHN A. LAMBLE
 COUNTY ENGINEER

RECOMMENDED BY
 C.C. 8420
 ASST. DIVISION ENGINEER

DRAWN BY: H.L.E. DESIGNED BY: H.L.E.

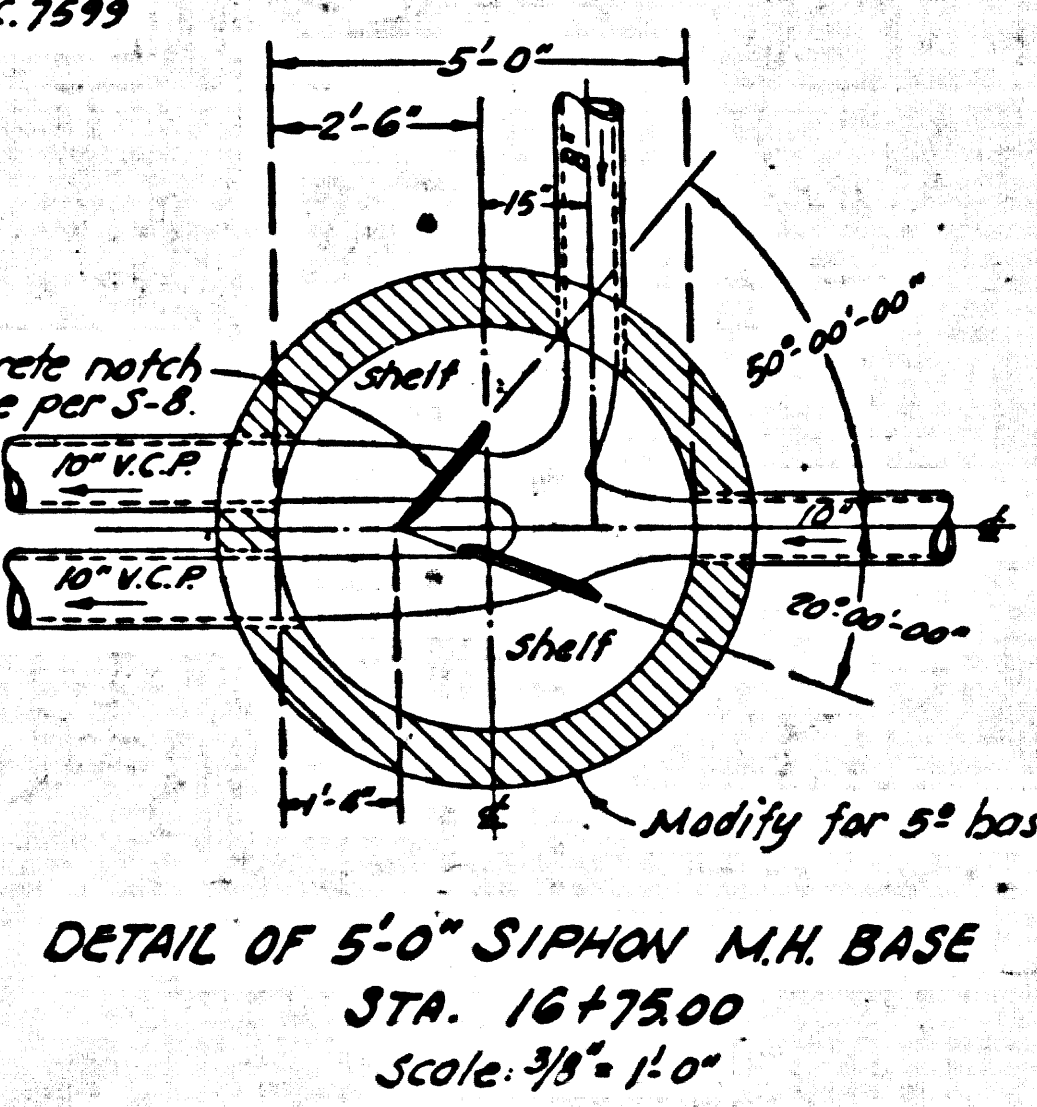
LOS ANGELES COUNTY
 FLOOD CONTROL DISTRICT

WILEY CANYON ROAD
 SEWER SIPHONS

REVISIONS		
MARK	DATE	DESCRIPTION

DRAWN BY	DESIGNED BY	APPROVED BY
CHECKED BY	SUBMITTED BY	CHIEF ENGINEER
RECOMMENDED BY		

SCALE: AS SHOWN DATE: NO. SHEET 1 OF 1



THE UNDERGROUND UTILITY COMPANIES WITHIN THE LIMITS OF THIS PROJECT ARE AS FOLLOWS:
 1. SOU CALIFORNIA GAS CO.
 2. BOUQUET CANYON WATER CO.