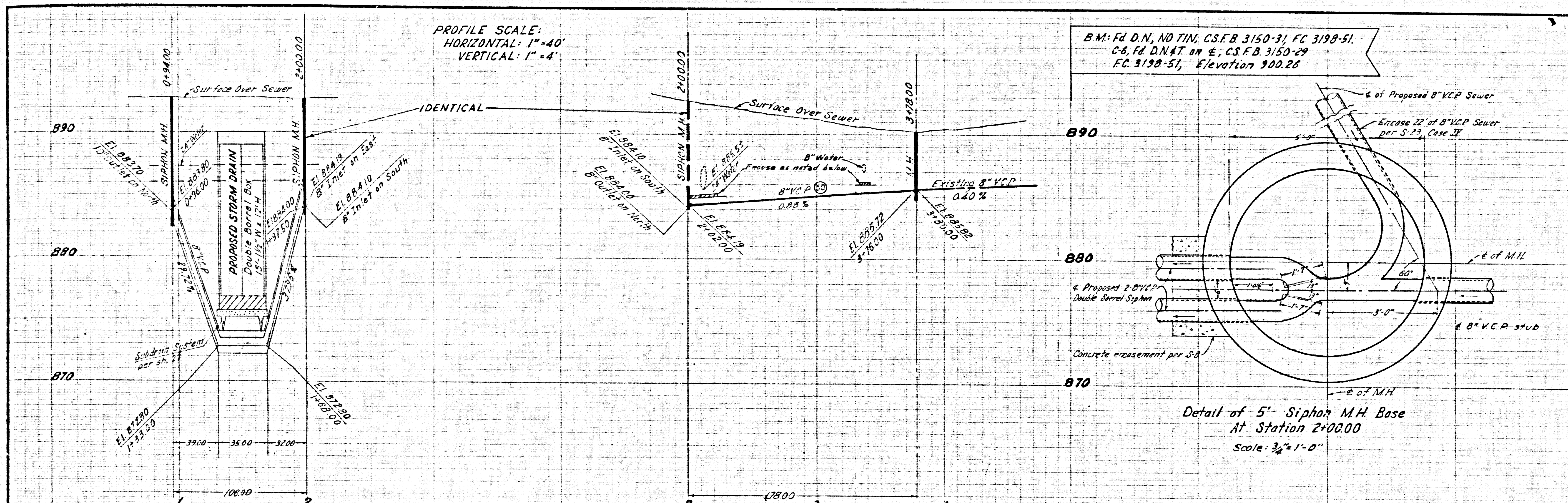
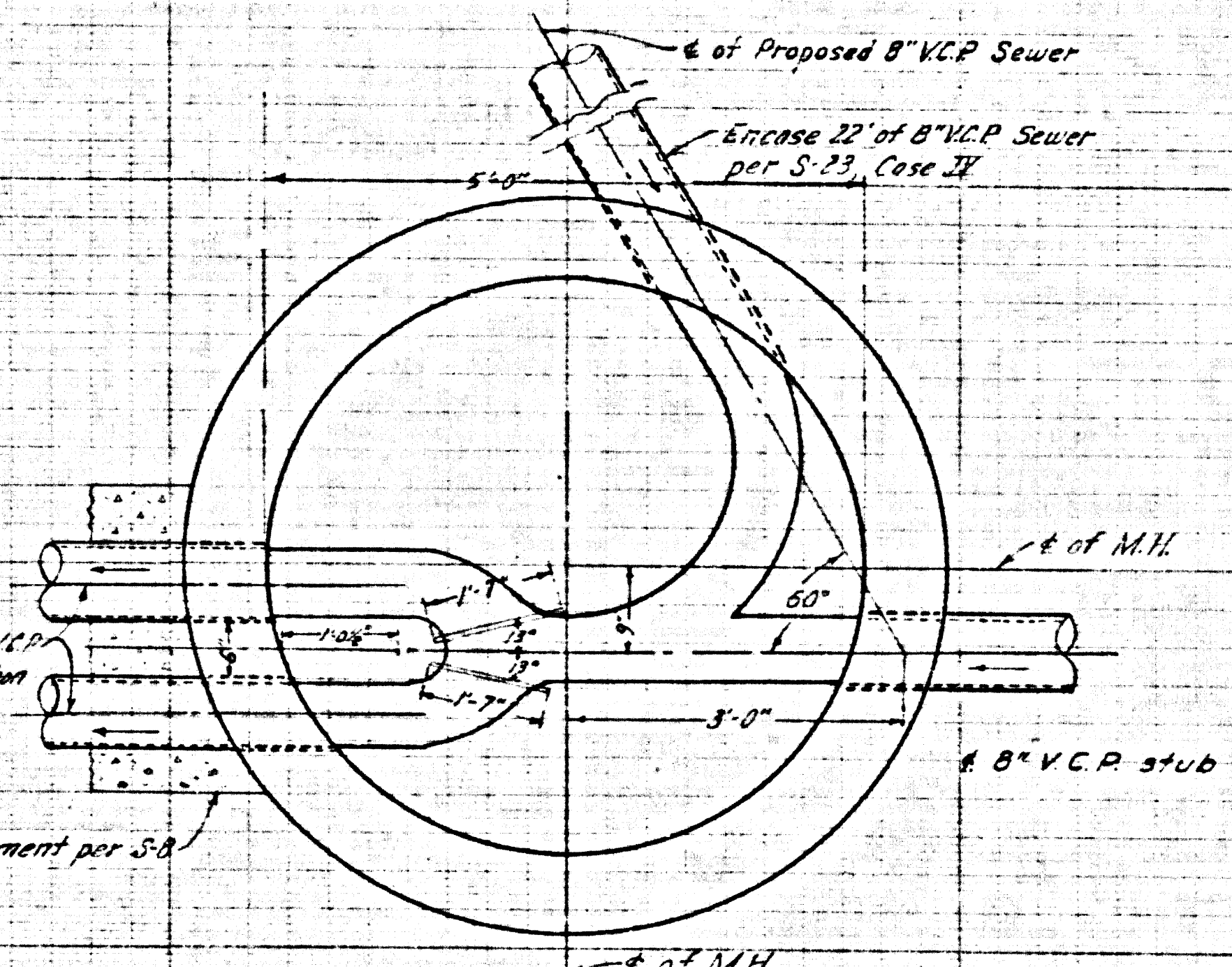


PROFILE SCALE:
HORIZONTAL: 1"=40'
VERTICAL: 1"=4'



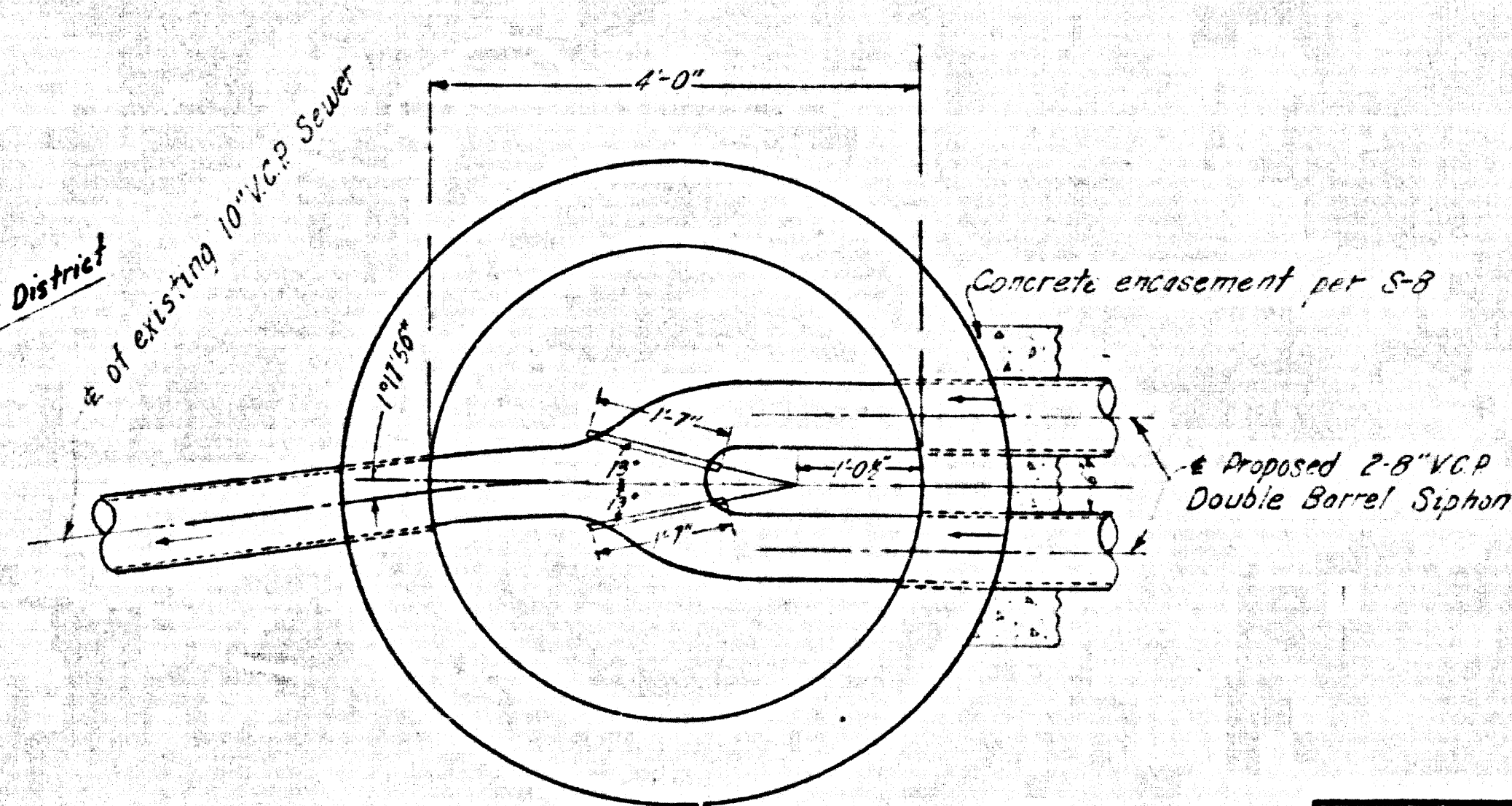
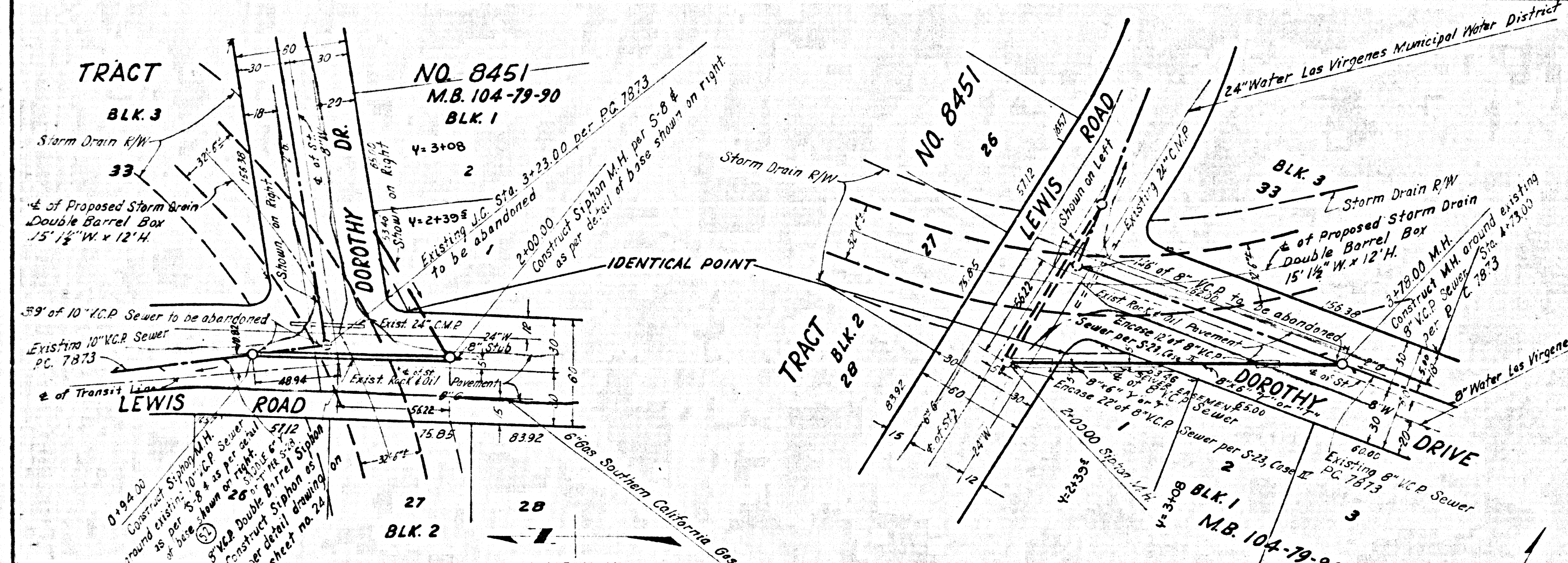
B.M. Fd. D.N., NO. TIN, C.S.F.B. 3150-31, F.C. 3198-51.
C-6, Fd. D.N. at E; C.S.F.B. 3150-29
F.C. 3198-51, Elevation 900.26



Detail of 5' Siphon M.H. Base
At Station 2+00.00
Scale: 3/4" = 1'-0"

L. A. COUNTY ENGINEERS-GENERAL SEWER NOTES

- Sanitary sewers shall be constructed in accordance with the Standard Specifications for Public Works Construction (hereinafter referred to as the Standard Specifications), Special Provisions and Standard Plans on file in the Office of the County Engineer.
- Existing sewer services and flow shall be maintained at all times.
- At least 24 hours before starting work on this project, the Contractor shall notify:
The County Engineer
Telephone 629-4147, Extension 81-552
- Refer to Section 7-10.41 of the Standard Specifications regarding Safety orders.
- Construction under this project shall conform to the following Standard Plans: S-4, S-2, S-3, S-5, S-6, S-8, S-15, S-17, S-23, S-33.



Detail of Siphon M.H. Base
At Station 0+94.00
Scale: 3/4" = 1'-0"

REVISIONS			
NO.	DATE	DESCRIPTION	BY

PREPARED BY
JOHN A. LAMBIE
COUNTY ENGINEER
C.C. 8421

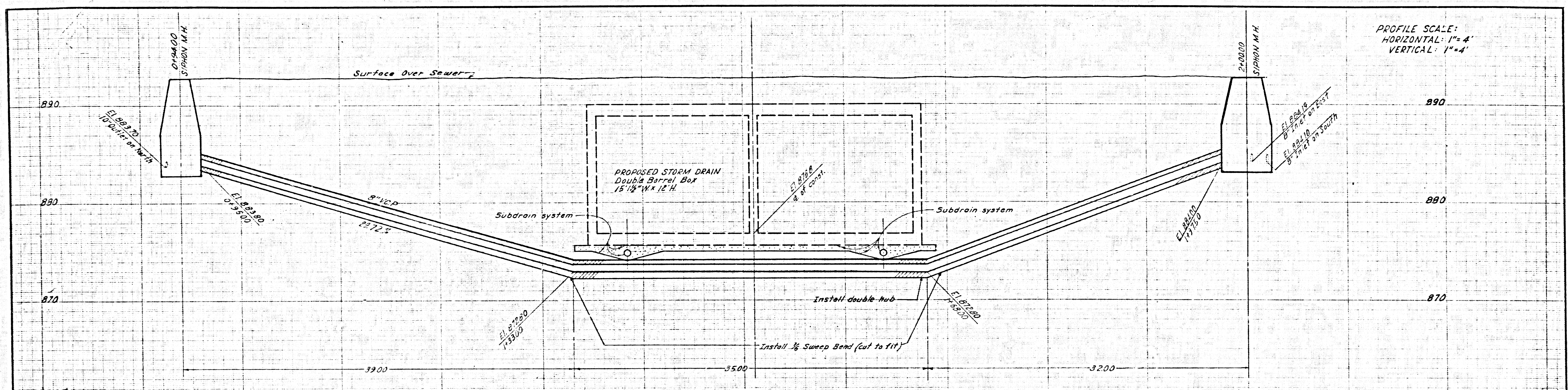
APPROVED
GENERAL MANAGER
LAS VIRGENES MUNICIPAL WATER DISTRICT
H. W. STOKES
BY *[Signature]*

RECOMMENDED BY
[Signature]
ASST. DIVISION ENGINEER, SANITATION DIVISION

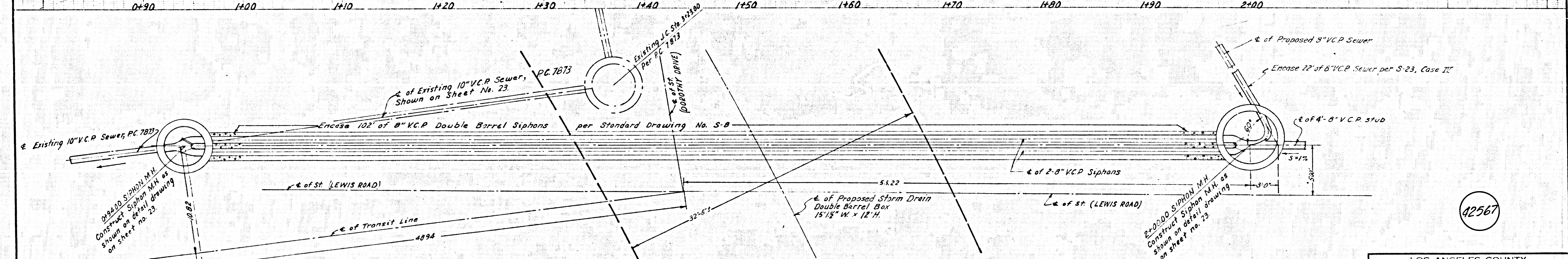
LOS ANGELES COUNTY
FLOOD CONTROL DISTRICT
CHESEBORO CANYON
MEDEA CREEK TO DRIVER AVE
CONCRETE CONDUIT
RECONSTRUCTION OF SEWERS AT
LEWIS ROAD AND DOROTHY DR.
PLAN AND PROFILE

SCALE	DATE	DWG. NO.	SHEET	OF
AS SHOWN	MARCH, 1970	422-D1-23	21	26

42566



PROFILE SCALE:
HORIZONTAL: 1"=4'
VERTICAL: 1"=4'



12567

REVISIONS				
DATE	BY	MARK	DATE	DESCRIPTION

LOS ANGELES COUNTY
FLOOD CONTROL DISTRICT
CHESEBORO CANYON
MEDEA CREEK TO DRIVER AVE.
CONCRETE CONDUIT

RECONSTRUCTION OF SEWERS AT
LEWIS ROAD AND DOROTHY DR.
SEWER SIPHON DETAILS

PREPARED BY
JOHN A. LAMBIE
COUNTY ENGINEER
C.C. 8421

RECOMMENDED BY
R. M. ...
APPROVED BY
John A. Lambie
COUNTY ENGINEER

SCALE: 1"=4'
DATE: 1/24/50
DWG. NO. 422-01.24
SHEET 24 OF 25